



DEPARTMENT OF PRIMARY INDUSTRIES
WET TROPICAL COAST STUDY - NORTH QUEENSLAND

CARDWELL - INNISFAIL AREA AGRICULTURAL LAND SUITABILITY

SCALE 1 : 50000
kilometres

GRID LINES ARE 1000 METRE INTERVALS OF THE AUSTRALIAN MAP GRID. ZONE 55
GRID VALUES ARE SHOWN IN FULL ONLY AT THE SOUTH WEST CORNER OF THE MAP
TRANSVERSE MERCATOR PROJECTION

INTENSITY STATEMENT
Suitability assessment is based on a medium intensity soil survey, using aerial photograph interpretation and ground observations of the order of one observation to an area of 25-50 ha.

SURVEY by C.D. Smith, Kamerang Research Station and L.J. Heiner, Marwick, Land Resources Branch, Department of Primary Industries and G.G. Murra and M.G. Cannon, CSIRO, Division of Soils, Townsville.
CARTOGRAPHY by J.N. Jeffery, Land Resources Branch, Department of Primary Industries, Brisbane.

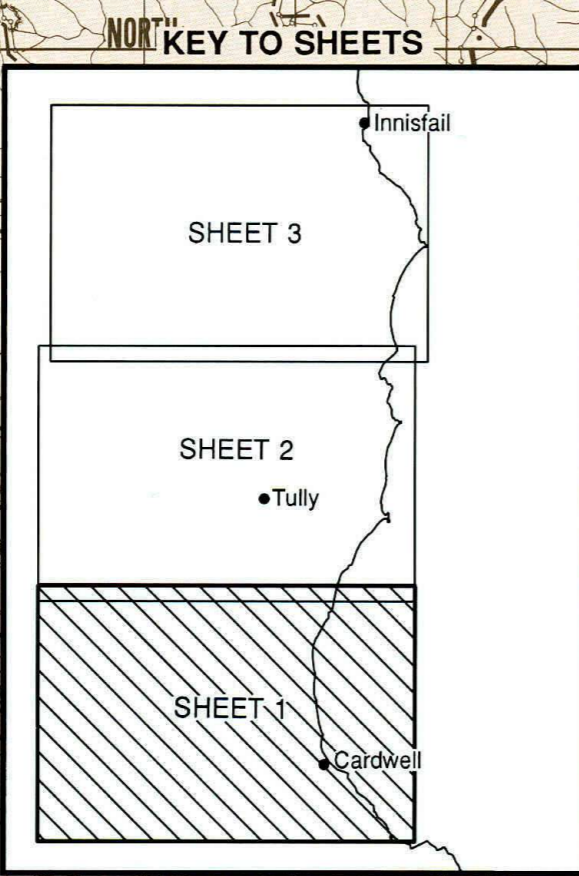
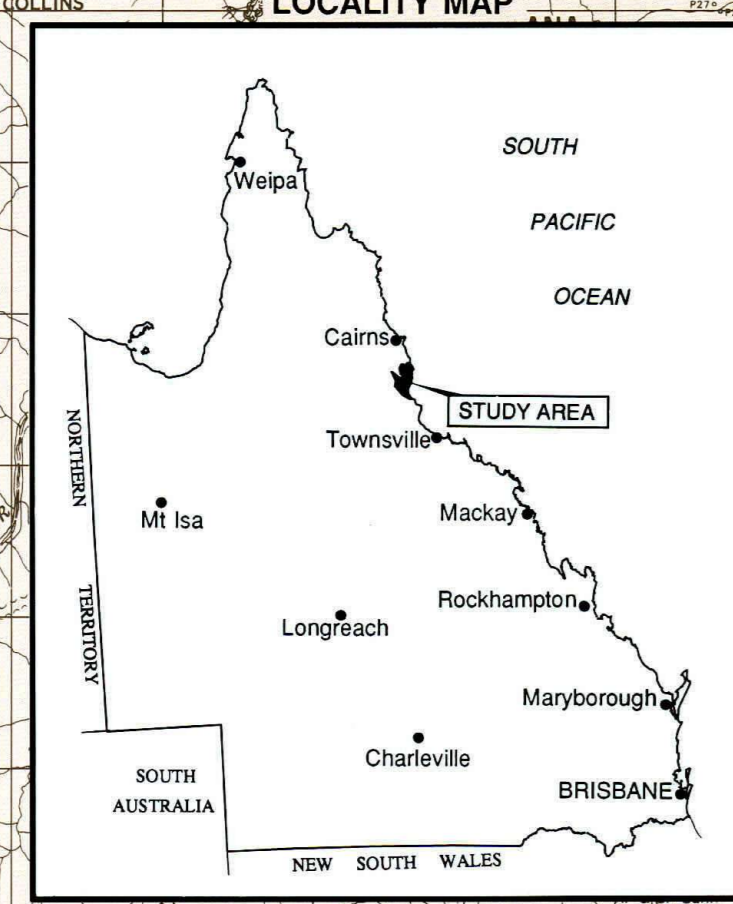
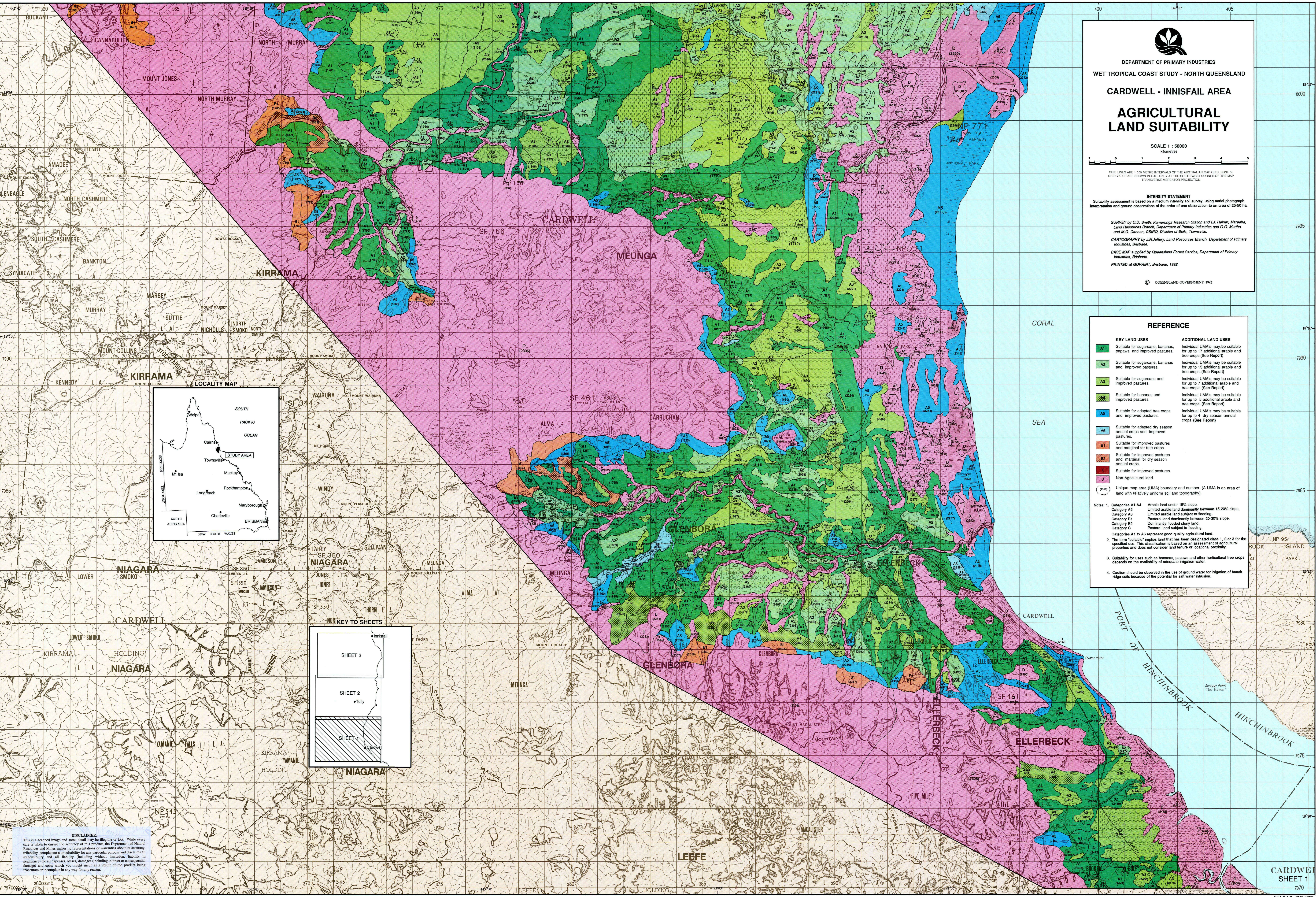
BASE MAP supplied by Queensland Forest Service, Department of Primary Industries, Brisbane.
PRINTED at GOPRINT, Brisbane, 1992.

© QUEENSLAND GOVERNMENT, 1992

REFERENCE

KEY LAND USES	ADDITIONAL LAND USES
A1 Suitable for sugarcane, bananas, papaws and improved pastures.	Individual UMA's may be suitable for up to 17 additional arable and tree crops (See Report)
A2 Suitable for sugarcane, bananas and improved pastures.	Individual UMA's may be suitable for up to 15 additional arable and tree crops (See Report)
A3 Suitable for sugarcane and improved pastures.	Individual UMA's may be suitable for up to 7 additional arable and tree crops (See Report)
A4 Suitable for bananas and improved pastures.	Individual UMA's may be suitable for up to 5 additional arable and tree crops (See Report)
A5 Suitable for adapted tree crops and improved pastures.	Individual UMA's may be suitable for up to 4 dry season annual crops (See Report)
A6 Suitable for adapted dry season annual crops and improved pastures.	
B1 Suitable for improved pastures and marginal for tree crops.	
B2 Suitable for improved pastures and marginal for dry season annual crops.	
D Suitable for improved pastures.	
D Non-Agricultural land.	
(2916) Unique map area (UMA) boundary and number. (A UMA is an area of land with relatively uniform soil and topography).	

- Notes: 1. Categories A1-A4 Arable land under 15% slope.
Category A5 Limited arable land dominantly between 15-20% slope.
Category A6 Limited arable land subject to flooding.
Category B1 Pastoral land dominantly between 20-30% slope.
Category B2 Dominantly flooded stony land.
Category C Pastoral land subject to flooding.
Categories A1 to A6 represent good quality agricultural land.
2. The term "suitable" implies land that has been designated class 1, 2 or 3 for the specified use. This classification is based on an assessment of agricultural properties and does not consider land tenure or locational proximity.
3. Suitability for uses such as bananas, papaws and other horticultural tree crops depends on the availability of adequate irrigation water.
4. Caution should be observed in the use of ground water for irrigation of beach ridge soils because of the potential for salt water intrusion.



DISCLAIMER:
This is a scanned image and some detail may be illegible or lost. While every care is taken to ensure the accuracy of this product, the Department of Natural Resources and Mines makes no representations or warranties about its accuracy, reliability, completeness or suitability for any particular purpose and declines all responsibility and all liability (including without limitation, liability in negligence) for all expenses, losses, damages (including indirect or consequential damages) and costs which you might incur as a result of the product being inaccurate or incomplete in any way for any reason.