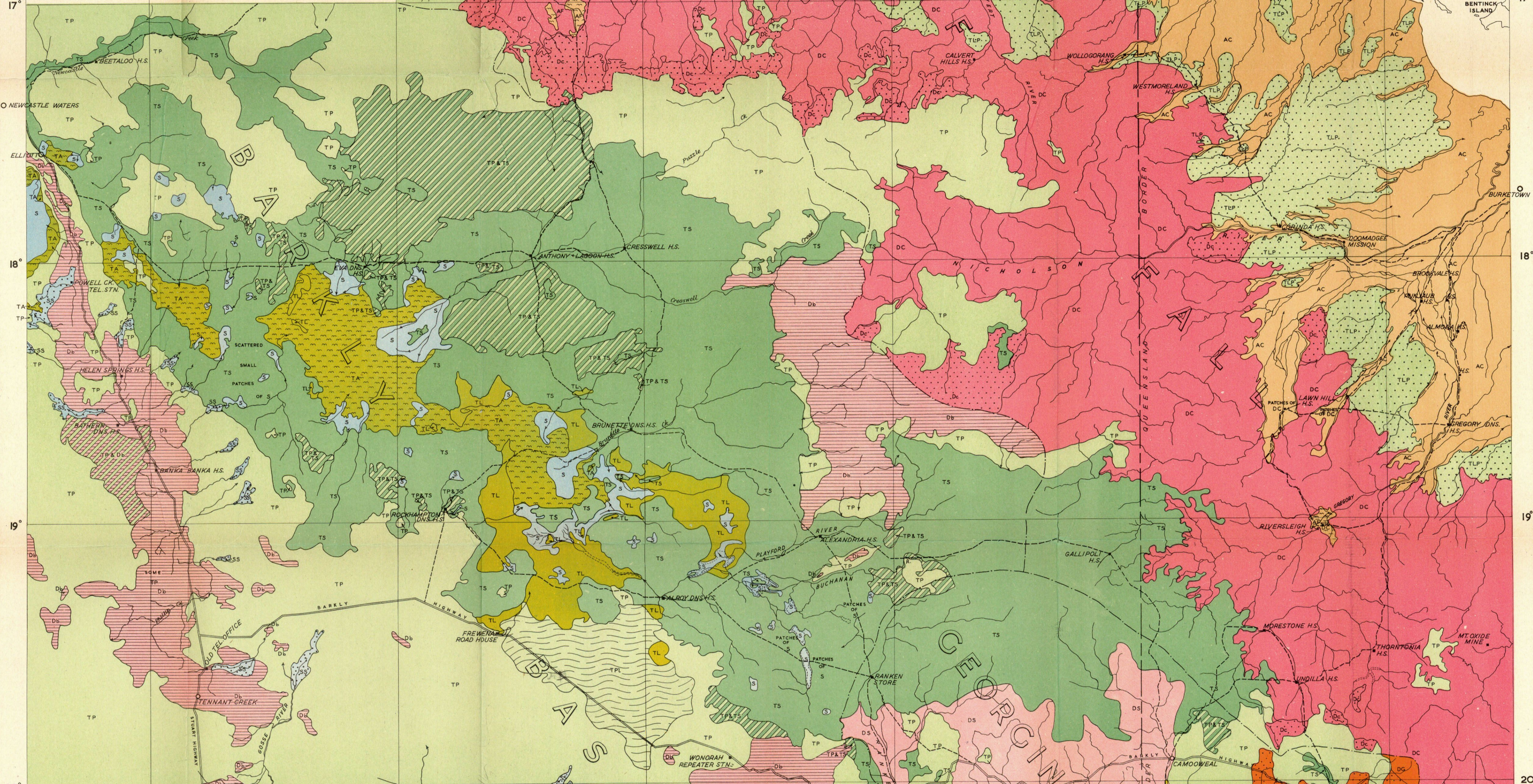


133°30' 134° 135° 136° 137° 138° 139° 139°30'

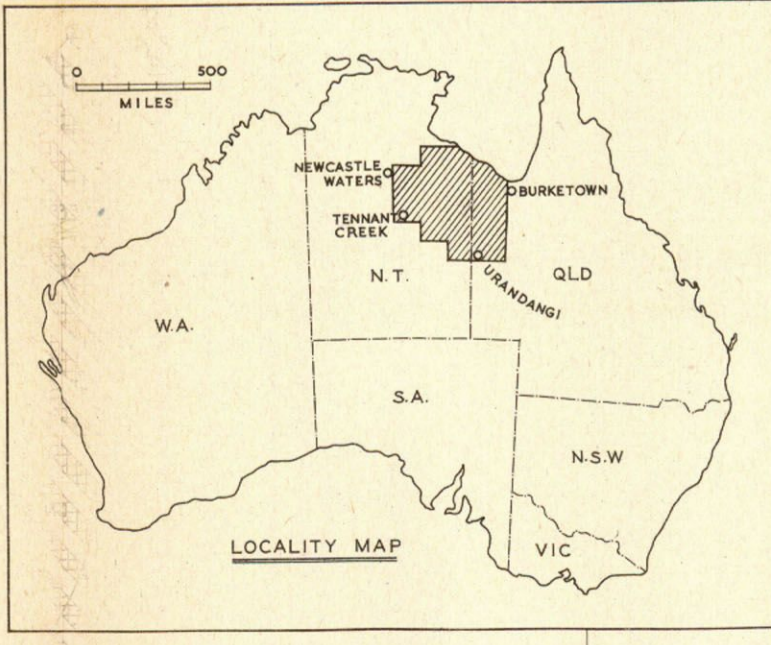
GULF OF CARPENTARIA

C.S.I.R.O.
NORTHERN AUSTRALIA REGIONAL SURVEY 1947-48
MAP SHOWING
GEOMORPHOLOGICAL UNITS
OF THE
BARKLY REGION
(INCLUDING THE BARKLY TABLELAND, GULF FALL AREAS
AND THE
UPPER GEORGINA BASIN AND ASSOCIATED INLAND DESERT)
COMPILED BY
G.A. STEWART PEDOLOGIST
D.M. TRAVES GEOLOGIST
FROM LAND TRAVERSE RECORDS & AERIAL PHOTOGRAPHS
OFFICER IN CHARGE OF SURVEY C.S. CHRISTIAN
TOPOGRAPHICAL BASE MAPPING FROM AERIAL PHOTOGRAPHS BY NATIONAL MAPPING SEC., DEPT. OF INTERIOR
MERCATOR PROJECTION



LEGEND

GEOMORPHOLOGICAL SUB-DIVISION	GEOMORPHOLOGICAL UNIT	GEOMORPH. DIV. IN WHICH UNIT OCCURS	
STABLE LAND SURFACE	TLP	LOW LEVEL TERTIARY LATERITIC PLAIN	X
	TP	TERTIARY LATERITIC PLAIN	X X X
	TN	NON-LATERITIC TERTIARY PLAIN	X X
	TS	TERTIARY SWAMP	X X X
	TL	TERTIARY LAKE LIMESTONE	X X X
EROSIONAL LAND SURFACE	TA	TERTIARY LAKE ALLUVIA	X
	TP	TERTIARY PLAIN WITH AEOLIAN LIMESTONE	X
EROSIONAL LAND SURFACE	DC	DISSECTED COUNTRY OF GULF FALL WITHOUT LATERITIC REMNANTS	X
	DC	DISSECTED COUNTRY OF GULF FALL WITH LATERITIC REMNANTS	X
	DC	DISSECTED COUNTRY OF BARKLY INTERNAL DRAINAGE BASIN WITH LATERITIC REMNANTS	X
	DC	DISSECTED COUNTRY OF GEORGINA BASIN WITHOUT LATERITIC REMNANTS	X
	DC	DISSECTED COUNTRY OF GEORGINA BASIN WITH LATERITIC REMNANTS	X
EROSIONAL LAND SURFACE	DS	DISSECTED TERTIARY SWAMP	X
	DN	DISSECTED NON-LATERITIC TERTIARY PLAIN	X
DEPOSITIONAL LAND SURFACE	AC	POST-MIOCENE COASTAL ALLUVIA	X
	AF	POST-MIOCENE FLOOD PLAIN ALLUVIA OF COASTAL RIVERS	X
	AL	POST-MIOCENE FINE TEXTURED ALLUVIA OF GEORGINA BASIN	X
	AS	POST-MIOCENE COARSE TEXTURED ALLUVIA OF GEORGINA BASIN	X
	A	CHANNEL ALLUVIA OF GEORGINA MAJOR TRIBUTARIES	X
	S	RECENT COARSE TEXTURED ALLUVIA OF DESERT DISTRIBUTORY SYSTEMS	X
	S	RECENT FINE TEXTURED ALLUVIA OF DESERT DISTRIBUTORY SYSTEMS	X X



133°30' 134° 135° 136° 137° 138° 139° 139°30'

DRAWN BY NATIONAL MAPPING SECTION, DEPARTMENT OF INTERIOR, 1950.

This map is a scanned image and some detail may be illegible or lost. All rights are reserved and no part of this publication covered by copyright may be reproduced or copied in any form or by any means except with the written permission of CSIRO Division of Land and Water. To the extent permitted by law, CSIRO excludes all liability to any person or organization for expenses, losses, liability and costs arising directly or indirectly from using this publication in whole or in part and any information or material contained in it. The publication must not be used as a means of endorsement without the prior written consent of CSIRO.