

# Land cover change in the South East Queensland Catchments Natural Resource Management region

2010–11

## Summary

The woody vegetation clearing rate for the SEQ region for 2010–11 dropped to 3193 hectares per year (ha/yr). This represented a 14 per cent decline from the previous era.

Clearing rates of remnant woody vegetation decreased in 2010-11 to 758 ha/yr, 33 per cent lower than the previous era.

The replacement land cover class of forestry increased by a further 5 per cent over the previous era and represented 26 per cent of the total woody vegetation clearing rate in the region. Pasture remained the dominant replacement land cover class at 34 per cent of total clearing.

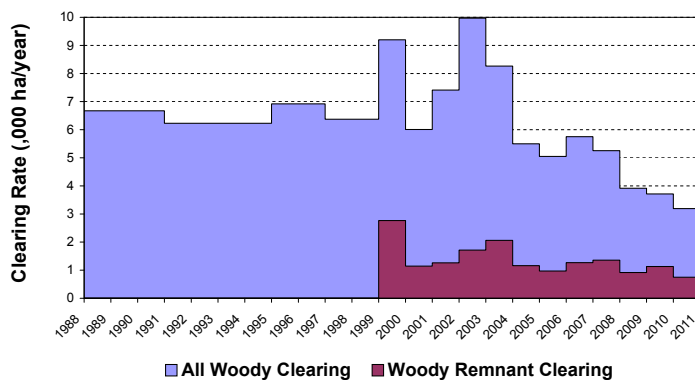


Figure 1. Woody vegetation clearing rates in the South East Queensland Catchments NRM region.

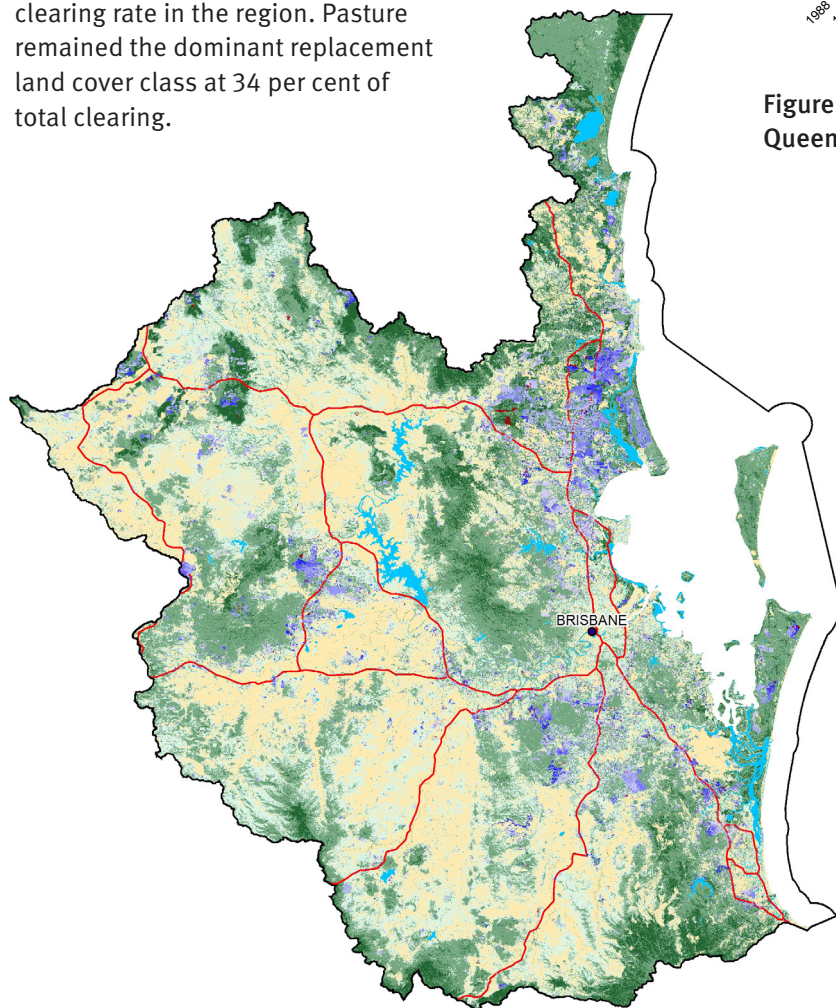


Figure 2. Woody vegetation clearing for each change period.

## Woody vegetation clearing by remnant status

Table 1. Remnant and non-remnant woody vegetation clearing rates in the South East Queensland Catchments NRM region.

Period	Woody vegetation clearing rate (,000 ha/yr) of		
	Non-remnant woody	Remnant woody*	Total woody
1999-00	6.433	2.767	9.201
2000-01	4.863	1.145	6.008
2001-02	6.150	1.262	7.411
2002-03	8.254	1.715	9.969
2003-04	6.203	2.063	8.265
2004-05	4.336	1.162	5.498
2005-06	4.078	0.970	5.048
2006-07	4.483	1.267	5.751
2007-08	3.898	1.356	5.254
2008-09	2.999	0.917	3.916
2009-10	2.582	1.131	3.713
2010-11	2.435	0.758	3.193

\* Regional ecosystem remnant mapping prior to 1999 not used in this analysis.

## Woody vegetation clearing by tenure

Table 2. Woody vegetation clearing rates in the South East Queensland Catchments NRM region by tenure.

Period	Woody vegetation clearing rate (,000 ha/yr) on				
	Freehold	Leasehold	Reserves	Other tenures	Total
1988-91	5.402	0.522	0.711	0.028	6.663
1991-95	4.192	0.456	1.540	0.019	6.207
1995-97	5.295	0.535	1.064	0.016	6.910
1997-99	4.408	0.856	1.079	0.019	6.361
1999-00	7.450	0.812	0.918	0.020	9.200
2000-01	5.091	0.395	0.495	0.026	6.007
2001-02	5.589	0.318	1.437	0.064	7.408
2002-03	8.128	0.445	1.315	0.081	9.969
2003-04	6.415	0.600	1.172	0.020	8.206
2004-05	4.059	0.585	0.844	0.010	5.498
2005-06	3.481	0.649	0.917	0.002	5.048
2006-07	4.282	0.446	1.020	0.002	5.751
2007-08	3.742	0.627	0.869	0.016	5.254
2008-09	3.009	0.399	0.507	0.002	3.916
2009-10	2.607	0.310	0.795	0.001	3.713
2010-11	2.182	0.210	0.800	0.000	3.192

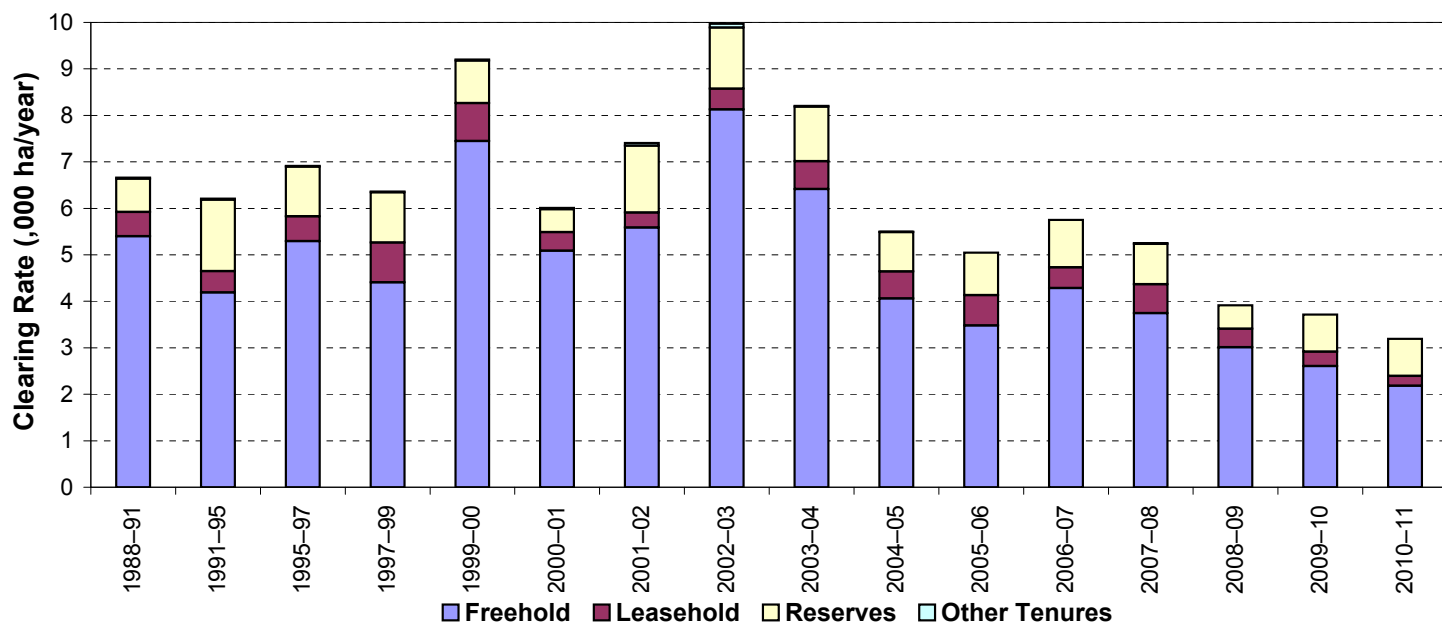


Figure 3. Woody vegetation clearing rates in the South East Queensland Catchments NRM region by tenure.

Almost all the clearing on reserves is for forestry purposes.

## Woody vegetation clearing by subcatchment

Table 3. Woody vegetation clearing rates in the South East Queensland Catchments NRM region by subcatchment #.

Woody vegetation clearing rate (,000 ha/yr) for	Period				
	2006–07	2007–08	2008–09	2009–10	2010–11
Albert River	0.344	0.120	0.051	0.043	0.074
Bremer River	0.358	0.266	0.314	0.088	0.181
Brisbane River	1.248	1.398	0.718	0.819	0.728
Caboolture River	0.199	0.361	0.451	0.159	0.161
Coomera & Nerang Rivers	0.487	0.357	0.328	0.344	0.245
Lockyer Creek	0.456	0.428	0.352	0.392	0.218
Logan River	0.729	0.870	0.685	0.767	0.398
Maroochy River	1.392	0.847	0.542	0.597	0.296
Moreton Island	0.001	0.012	0.000	0.000	0.000
Noosa River	0.129	0.166	0.043	0.065	0.069
North Pine River	0.131	0.072	0.126	0.108	0.136
South Pine River	0.080	0.110	0.083	0.105	0.105
Stanley River	0.105	0.082	0.134	0.125	0.515
Stradbroke Islands	0.093	0.157	0.089	0.100	0.066
<b>Total</b>	<b>5.751</b>	<b>5.245</b>	<b>3.916</b>	<b>3.712</b>	<b>3.192</b>

# Please refer to Figure 26 of the main report (DSITIA, 2014) for the location of each subcatchment.

## Remaining woody vegetation

Table 4. Remaining woody vegetation in the South East Queensland Catchments NRM region by subcatchment.

	Catchment area (,000 ha)	Area woody 2010 V2.3 (,000 ha)	% of catchment woody in 2010
Albert River	78	55	71
Bremer River	203	111	55
Brisbane River	697	455	65
Caboolture River	47	30	65
Coomera and Nerang Rivers	130	94	72
Lockyer Creek	301	191	63
Logan River	337	225	67
Maroochy River	154	107	69
Moreton Island	17	15	91
Noosa River	96	80	84
North Pine River	60	43	72
South Pine River	42	31	75
Stanley River	154	107	70
Stradbroke Islands	29	25	85
<b>Total</b>	<b>2344</b>	<b>1570</b>	<b>67</b>

## Woody vegetation clearing by replacement land cover

Table 5. Woody vegetation clearing rates in the South East Queensland Catchments NRM region by replacement land cover.

Period	Woody vegetation clearing rate (,000 ha/yr) for						
	Pasture	Crop	Forestry	Mining	Infrastructure	Settlement	Total*
1988–91	2.858	0.322	0.786	0.192	0.219	2.295	6.673
1991–95	1.970	0.237	1.894	0.097	0.083	1.946	6.228
1995–97	3.330	0.330	1.143	0.175	0.142	1.800	6.920
1997–99	1.980	0.216	2.447	0.204	0.322	1.203	6.373
1999–00	4.455	0.078	2.525	0.316	0.393	1.433	9.201
2000–01	2.164	0.030	2.653	0.066	0.143	0.952	6.008
2001–02	3.426	0.012	2.319	0.134	0.137	1.383	7.411
2002–03	4.296	0.021	2.050	0.176	0.280	3.138	9.960
2003–04	3.145	0.034	1.685	0.201	0.235	2.965	8.265
2004–05	2.849	0.000	1.228	0.194	0.151	1.076	5.498
2005–06	1.852	0.002	1.625	0.216	0.126	1.227	5.048
2006–07	2.065	0.005	1.260	0.169	0.543	1.708	5.751
2007–08	1.716	0.000	1.114	0.200	0.616	1.608	5.254
2008–09	1.459	0.001	0.503	0.083	0.326	1.544	3.916
2009–10	1.258	0.002	0.799	0.144	0.480	1.031	3.713
2010–11	1.086	0.009	0.835	0.126	0.134	1.003	3.193

\* Total excludes natural tree death.

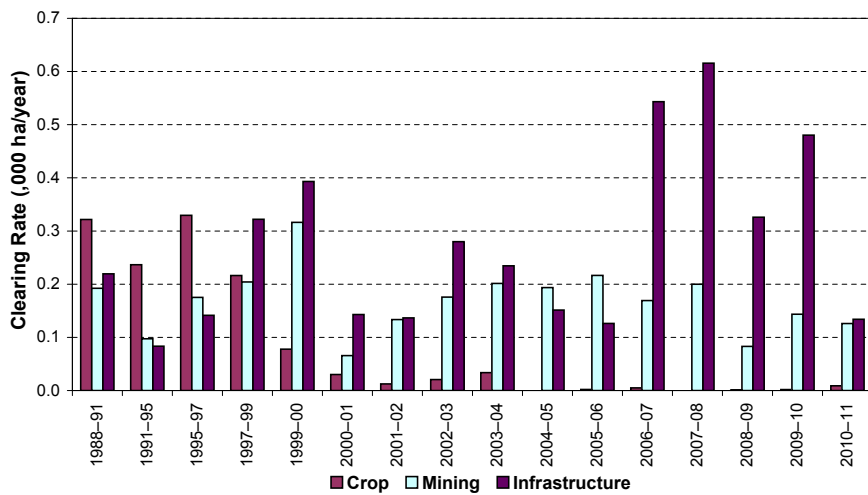
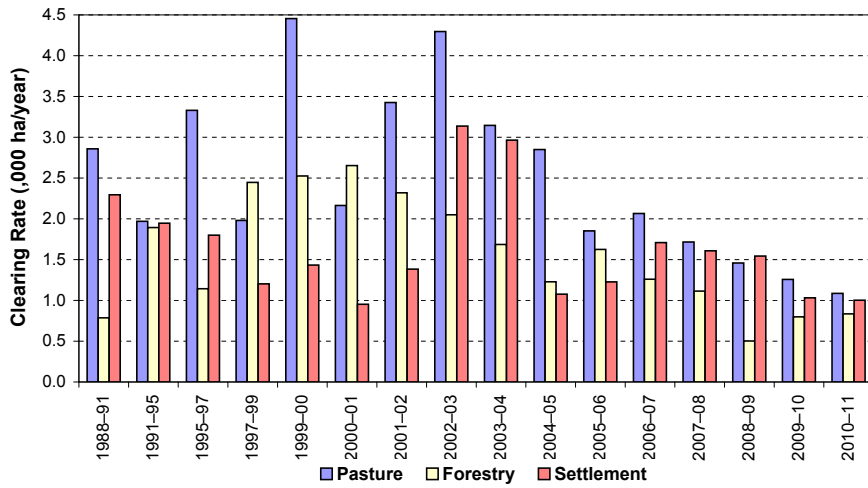


Figure 4. Woody vegetation clearing rates in the South East Queensland Catchments NRM region by replacement land cover.

This fact sheet is 10 of 13 in a series detailing land cover change in Queensland's Natural Resource Management Regions. These fact sheets are addenda to the report: Department of Science, Information Technology, Innovation and the Arts (2014). *Land cover change in Queensland 2010-11: a Statewide Landcover and Trees Study (SLATS) Report, 2014*. Department of Science, Information Technology, Innovation and the Arts, Brisbane.

Please refer to this report for further background, methods and explanatory notes.

The Queensland Government supports and encourages the dissemination and exchange of information. However, copyright protects this document. The State of Queensland has no objection to this material being reproduced, made available online or electronically, provided it is for your personal, non-commercial use, or use within your organisation; the material remains unaltered; and the State of Queensland is recognised as the owner.

© The State of Queensland 2014.

For further information:  
 Statewide Landcover and Trees Study  
 41 Boggo Road  
 Dutton Park QLD 4102  
 Phone: 61 7 3170 5686  
 Email: [siproductdelivery@dnrm.qld.gov.au](mailto:siproductdelivery@dnrm.qld.gov.au)