

Land cover change in the Reef Catchments Natural Resource Management region

2010–11

Summary

The woody vegetation clearing rate for the Reef Catchments region for 2010–11 was 567 hectares per year (ha/yr), an increase of 69 per cent from the previous era, but still lower than the 2007–08 clearing rate.

This era saw a further increase in clearing rates to the replacement land cover class of forestry, to 57 per cent of the total woody vegetation clearing rate for the region.

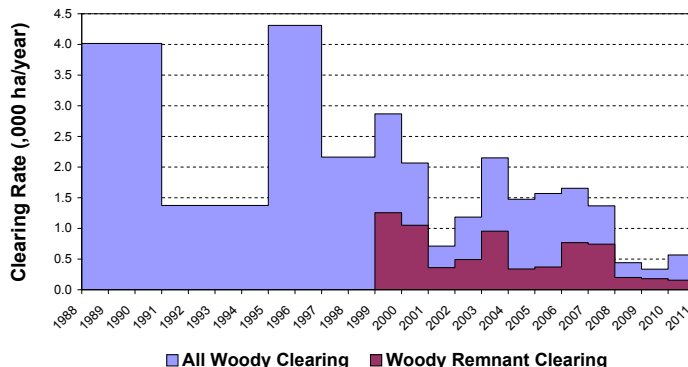


Figure 1. Woody vegetation clearing rates in the Reef Catchments NRM region.

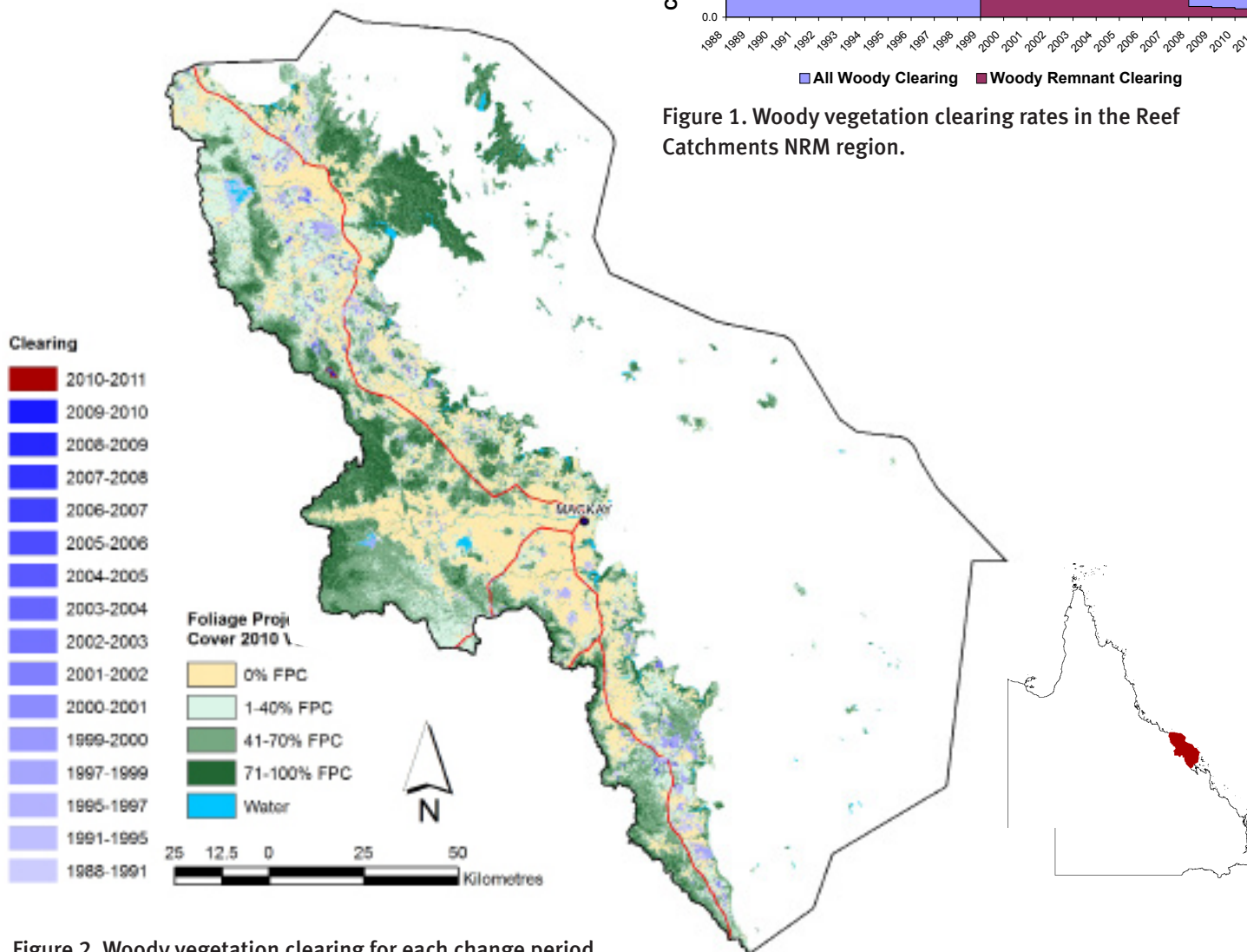


Figure 2. Woody vegetation clearing for each change period.

Woody vegetation clearing by remnant status

Table 1. Remnant and non-remnant woody vegetation clearing rates in the Reef Catchments NRM region.

Period	Woody vegetation clearing rate (,000 ha/yr) of		
	Non-remnant woody	Remnant woody*	Total woody
1999–00	1.612	1.256	2.868
2000–01	1.015	1.052	2.067
2001–02	0.351	0.360	0.712
2002–03	0.692	0.493	1.185
2003–04	1.195	0.955	2.150
2004–05	1.136	0.339	1.475
2005–06	1.199	0.371	1.570
2006–07	0.886	0.769	1.654
2007–08	0.625	0.743	1.368
2008–09	0.241	0.200	0.441
2009–10	0.156	0.180	0.336
2010–11	0.411	0.156	0.567

* Regional ecosystem remnant mapping prior to 1999 not used in this analysis.

Woody vegetation clearing by tenure

Table 2. Woody vegetation clearing rates in the Reef Catchments NRM region by tenure.

Period	Woody vegetation clearing rate (,000 ha/yr) on				
	Freehold	Leasehold	Reserves	Other tenures	Total
1988–91	2.755	0.497	0.013	0.689	3.954
1991–95	1.051	0.228	0.018	0.008	1.304
1995–97	4.054	0.233	0.007	0.001	4.294
1997–99	1.976	0.161	0.002	0.006	2.144
1999–00	2.688	0.169	0.011	0.000	2.868
2000–01	1.811	0.236	0.019	0.000	2.067
2001–02	0.667	0.044	0.000	0.000	0.712
2002–03	0.913	0.268	0.000	0.003	1.185
2003–04	2.000	0.142	0.007	0.000	2.150
2004–05	1.417	0.053	0.005	0.000	1.475
2005–06	1.515	0.055	0.000	0.000	1.570
2006–07	1.211	0.428	0.016	0.000	1.654
2007–08	1.196	0.167	0.006	0.000	1.368
2008–09	0.369	0.071	0.001	0.000	0.441
2009–10	0.176	0.040	0.120	0.000	0.336
2010–11	0.204	0.031	0.333	0.000	0.568

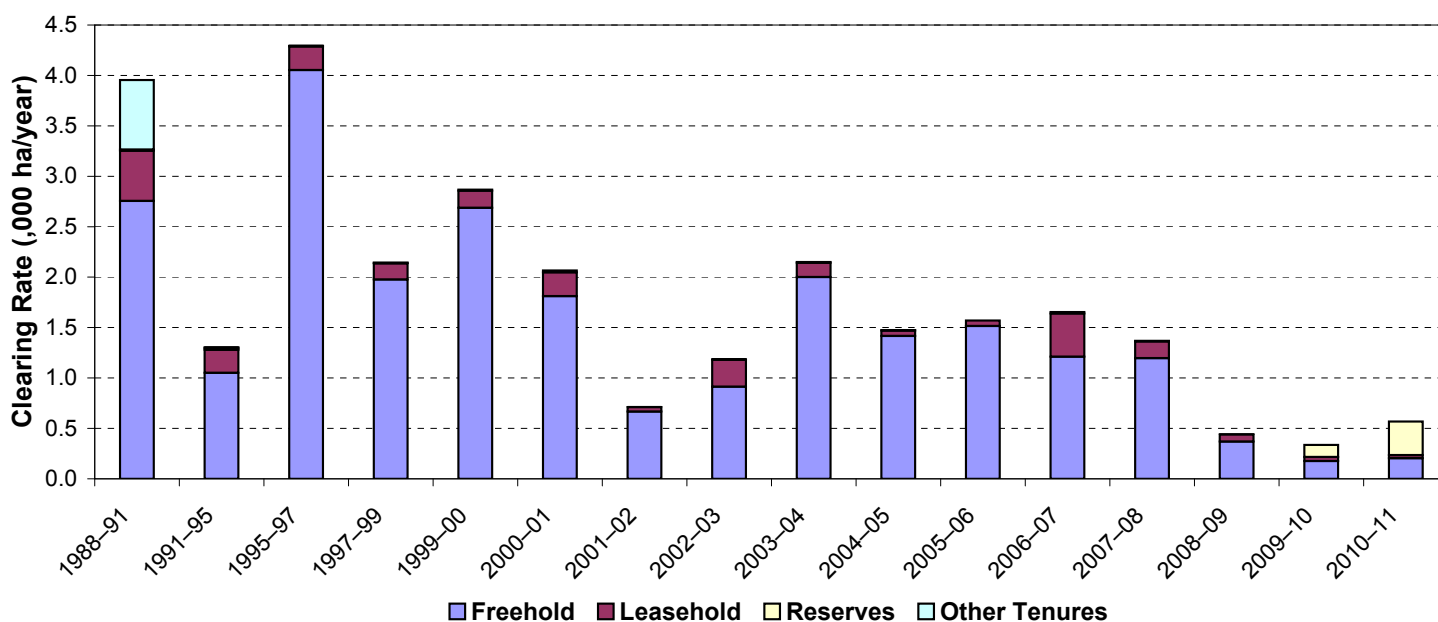


Figure 3. Woody vegetation clearing rates in the Reef Catchments NRM region by tenure.

Woody vegetation clearing by subcatchment

Table 3. Woody vegetation clearing rates in the Reef Catchments NRM region by subcatchment #.

Woody vegetation clearing rate (,000 ha/yr) for	Period				
	2006–07	2007–08	2008–09	2009–10	2010–11
Misc other islands	0.026	0.009	0.000	0.000	0.000
O’Connell River	0.597	0.543	0.190	0.168	0.392
Pioneer River	0.034	0.084	0.032	0.030	0.038
Plane Creek	0.806	0.276	0.087	0.066	0.074
Proserpine River	0.190	0.453	0.131	0.071	0.063
Total	1.655	1.368	0.440	0.336	0.567

Please refer to Figure 26 of the main report (DSITIA, 2014) for the location of each subcatchment.

Remaining woody vegetation

Table 4. Remaining woody vegetation in the Reef Catchments NRM region by subcatchment.

	Catchment area (,000 ha)	Area woody 2010 V2.3 (,000 ha)	% of catchment woody in 2010
Misc other islands	21	19	91
O’Connell River	238	165	69
Pioneer River	157	111	71
Plane Creek	253	147	58
Proserpine River	248	177	72
Whitsunday Island	11	10	96
Total	928	629	68

Woody vegetation clearing by replacement land cover

Table 5. Woody vegetation clearing rates in the Reef Catchments NRM Region by replacement land cover.

Period	Woody vegetation clearing rate (,000 ha/yr) for						Total*
	Pasture	Crop	Forestry	Mining	Infrastructure	Settlement	
1988–91	2.344	0.699	0.000	0.000	0.972	0.000	4.015
1991–95	0.774	0.556	0.015	0.000	0.024	0.005	1.374
1995–97	0.605	3.385	0.002	0.000	0.317	0.000	4.310
1997–99	0.104	2.016	0.000	0.002	0.040	0.000	2.163
1999–00	2.089	0.636	0.005	0.000	0.123	0.015	2.868
2000–01	1.462	0.515	0.014	0.002	0.073	0.000	2.067
2001–02	0.435	0.206	0.000	0.000	0.061	0.009	0.712
2002–03	1.012	0.147	0.000	0.000	0.019	0.007	1.185
2003–04	2.059	0.018	0.000	0.000	0.035	0.038	2.150
2004–05	1.366	0.038	0.001	0.002	0.040	0.028	1.475
2005–06	1.539	0.011	0.000	0.000	0.007	0.014	1.570
2006–07	1.466	0.029	0.000	0.000	0.108	0.051	1.654
2007–08	1.170	0.026	0.003	0.000	0.007	0.162	1.368
2008–09	0.396	0.005	0.000	0.000	0.000	0.039	0.441
2009–10	0.199	0.017	0.113	0.000	0.002	0.004	0.336
2010–11	0.203	0.001	0.324	0.001	0.011	0.027	0.567

* Total excludes natural tree death.

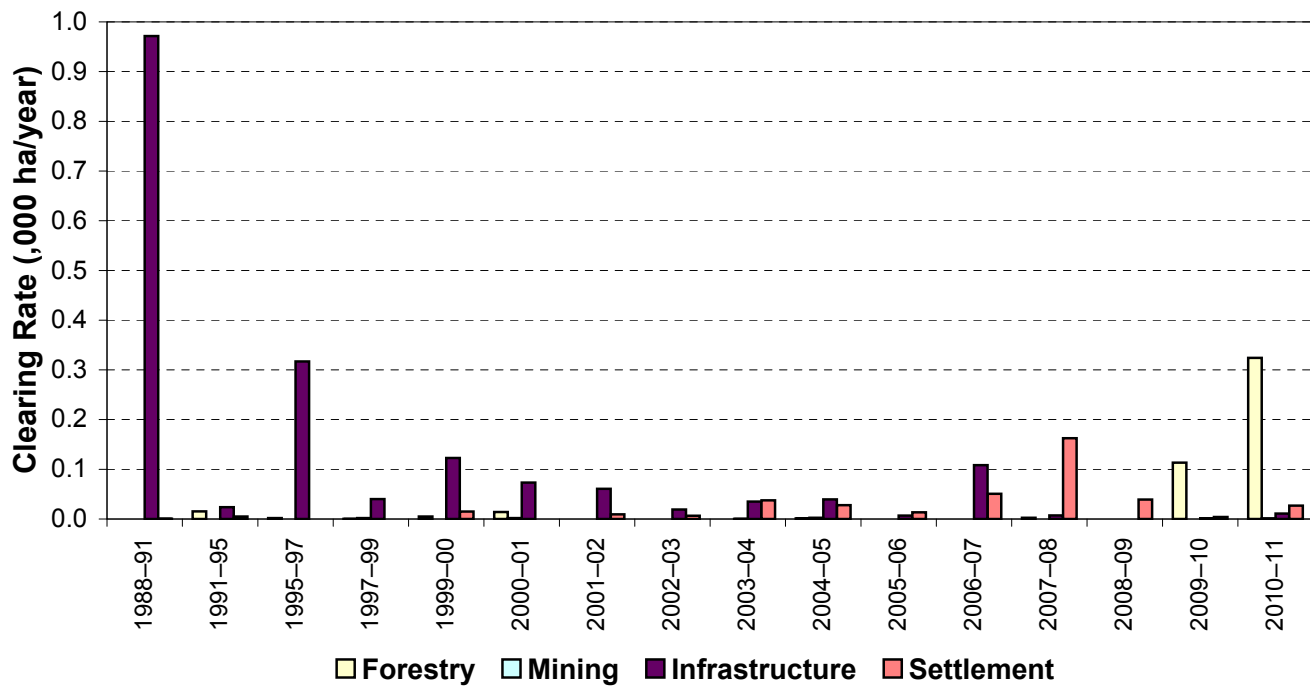
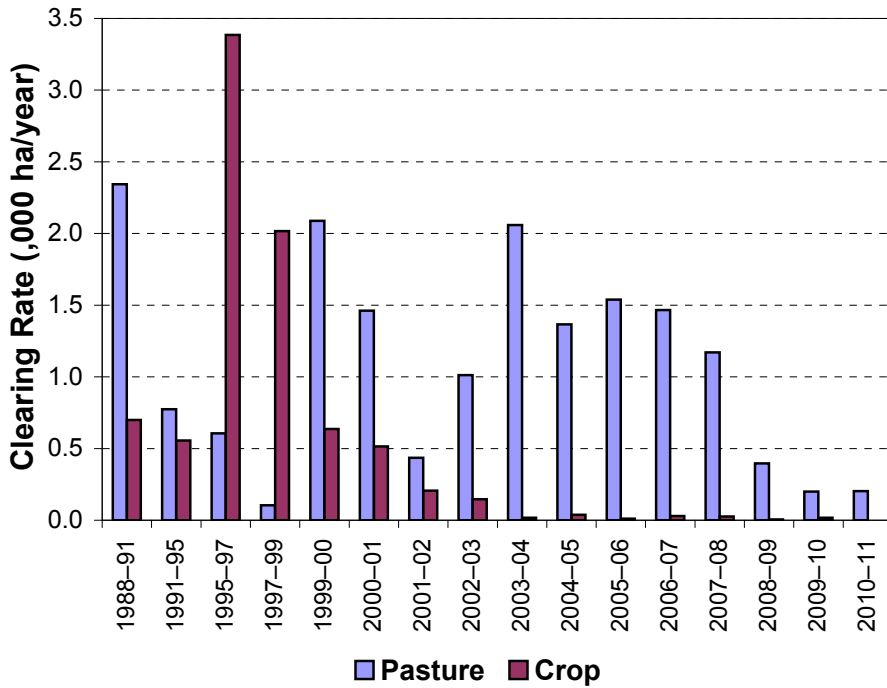


Figure 4. Woody vegetation clearing rates in the Reef Catchments NRM region by replacement land cover.

This fact sheet is 9 of 13 in a series detailing land cover change in Queensland's Natural Resource Management Regions. These fact sheets are addenda to the report: Department of Science, Information Technology, Innovation and the Arts (2014). *Land cover change in Queensland 2010-11: a Statewide Landcover and Trees Study (SLATS) Report, 2014*. Department of Science, Information Technology, Innovation and the Arts, Brisbane.

Please refer to this report for further background, methods and explanatory notes.

The Queensland Government supports and encourages the dissemination and exchange of information. However, copyright protects this document. The State of Queensland has no objection to this material being reproduced, made available online or electronically, provided it is for your personal, non-commercial use, or use within your organisation; the material remains unaltered; and the State of Queensland is recognised as the owner.

© The State of Queensland 2014.

For further information:
 Statewide Landcover and Trees Study
 41 Boggo Road
 Dutton Park QLD 4102
 Phone: 61 7 3170 5686
 Email: siproductdelivery@dnrm.qld.gov.au