

Land cover change in the Burnett–Mary Regional Group Natural Resource Management region

2010–11

Summary

In 2010–11, the woody vegetation clearing rate in the Burnett Mary Regional Group region was 9097 hectares per year (ha/yr) – a 3 per cent decrease from 9415 ha/yr in 2009–10.

The replacement land cover class of pasture represented 52 per cent of woody vegetation clearing detected in 2010–11. Woody vegetation clearing replaced with forestry continued at a rate over 4000 ha/yr as in 2009–10.

Clearing of remnant woody vegetation in the region was higher than 2009–10, although only accounting for 18 per cent of all clearing in the region.

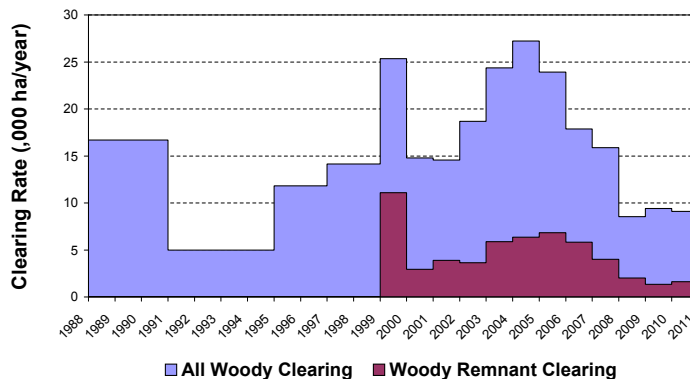


Figure 1. Woody vegetation clearing rates in the Burnett–Mary Regional Group NRM region.

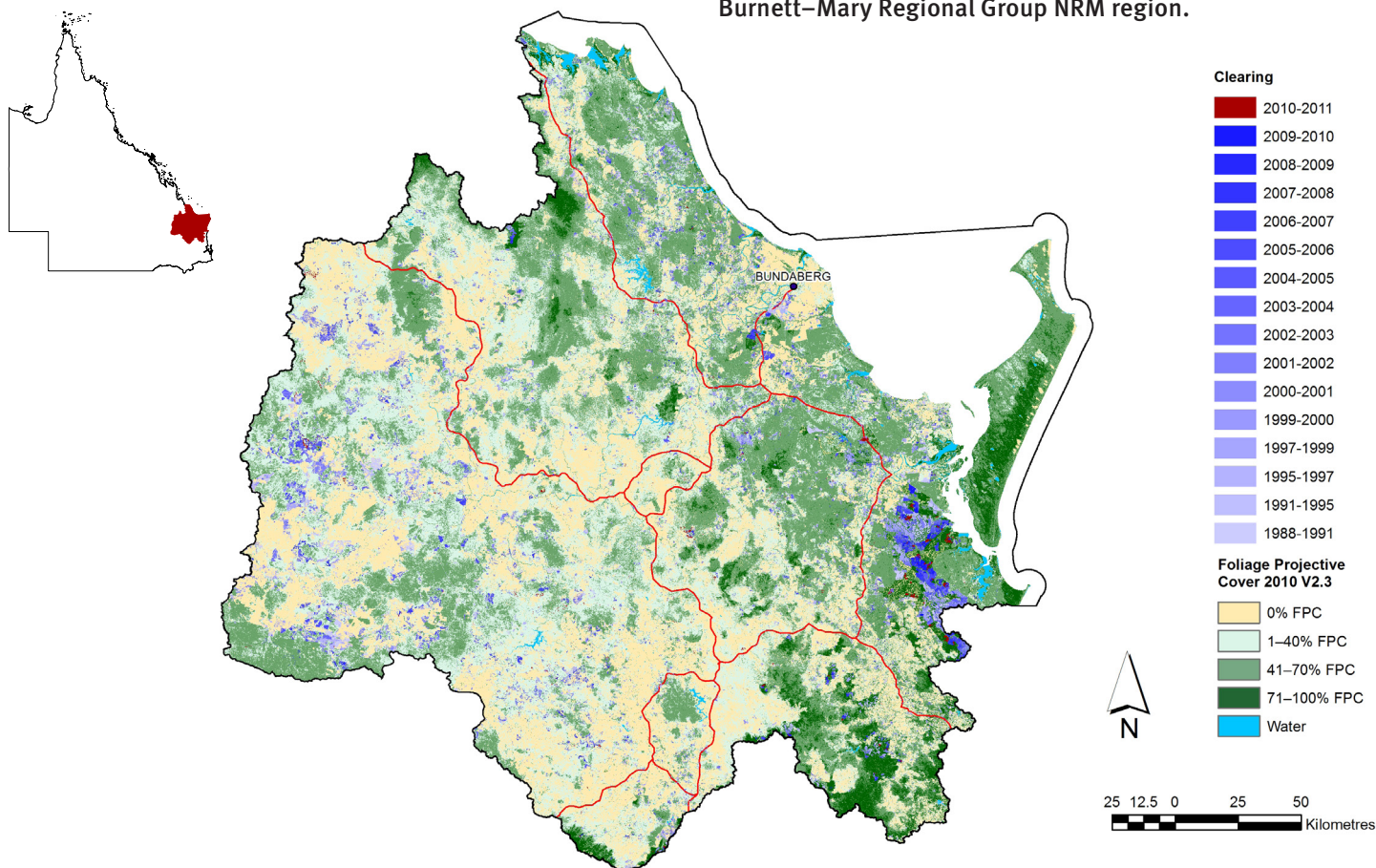


Figure 2. Woody vegetation clearing for each change period.

Woody vegetation clearing by remnant status

Table 1. Remnant and non-remnant woody vegetation clearing rates in the Burnett–Mary Regional Group NRM region.

Period	Woody vegetation clearing rate (,000 ha/yr) of		
	Non-remnant woody	Remnant woody*	Total woody
1999–00	14.279	11.080	25.359
2000–01	11.836	2.945	14.781
2001–02	10.672	3.897	14.568
2002–03	15.045	3.630	18.675
2003–04	18.480	5.887	24.367
2004–05	20.886	6.346	27.231
2005–06	17.093	6.830	23.923
2006–07	12.028	5.830	17.857
2007–08	11.870	4.011	15.880
2008–09	6.553	2.003	8.556
2009–10	8.077	1.338	9.415
2010–11	7.459	1.638	9.097

* Regional ecosystem remnant mapping prior to 1999 not used in this analysis.

Woody vegetation clearing by tenure

Table 2. Woody vegetation clearing rates in the Burnett–Mary Regional Group NRM region by tenure.

Period	Woody vegetation clearing rate (,000 ha/yr) on				
	Freehold	Leasehold	Reserves	Other tenures	Total
1988–91	12.787	1.469	2.387	0.030	16.674
1991–95	2.888	0.509	1.581	0.005	4.983
1995–97	8.959	0.400	2.454	0.008	11.822
1997–99	10.328	0.692	3.113	0.006	14.138
1999–00	21.350	1.435	2.569	0.006	25.359
2000–01	10.059	0.657	4.065	0.001	14.781
2001–02	10.246	1.425	2.897	0.000	14.568
2002–03	13.399	2.056	3.218	0.003	18.675
2003–04	18.442	1.980	3.940	0.005	24.366
2004–05	22.192	1.073	3.965	0.001	27.231
2005–06	18.837	0.778	4.307	0.000	23.922
2006–07	11.399	1.942	4.514	0.001	17.857
2007–08	10.472	0.977	4.432	0.000	15.880
2008–09	4.934	1.093	2.529	0.000	8.556
2009–10	4.174	0.283	4.958	0.000	9.415
2010–11	4.706	0.481	3.909	0.000	9.096

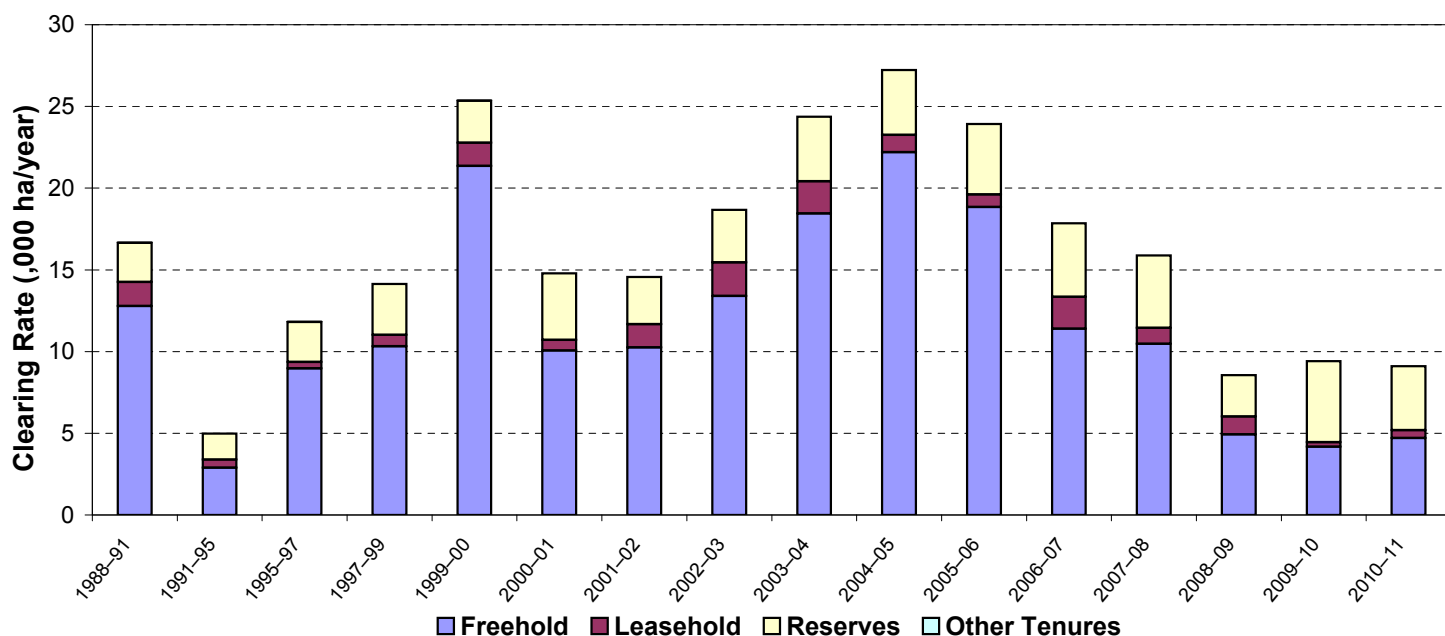


Figure 3. Woody vegetation clearing rates in the Burnett–Mary Regional Group NRM region by tenure.

Woody vegetation clearing by subcatchment

Table 3. Woody vegetation clearing rates in the Burnett–Mary Regional Group NRM region by subcatchment #.

Woody vegetation clearing rate (,000 ha/yr) for	Period				
	2006–07	2007–08	2008–09	2009–10	2010–11
Baffle Creek	1.762	1.337	0.754	0.413	0.502
Barker & Barambah Creek	0.596	0.437	0.533	0.639	0.586
Boyne & Auburn Rivers	5.322	3.827	2.365	1.448	1.438
Boyne River	0.176	0.015	0.005	0.002	0.011
Burrum River	0.617	0.230	0.080	0.093	0.260
Elliott River	0.292	0.315	0.549	0.087	0.056
Fraser Island	0.006	0.055	0.003	0.000	0.001
Gregory River	0.404	0.362	0.128	0.225	0.211
Isis River	0.436	0.152	0.075	0.097	0.039
Kolan River	0.556	0.683	0.277	0.435	0.363
Lower Burnett River	0.396	0.960	0.593	0.431	0.640
Lower Mary River	4.353	3.658	1.781	2.794	2.510
Noosa River	0.556	1.565	0.426	2.106	1.406
Upper Burnett River	2.053	1.913	0.730	0.198	0.737
Upper Mary River	0.334	0.370	0.259	0.447	0.338
Total	17.857	15.880	8.556	9.415	9.097

Please refer to Figure 26 of the main report (DSITIA, 2014) for the location of each subcatchment.

Remaining woody vegetation

Table 4. Remaining woody vegetation in the Burnett–Mary Regional Group NRM region by subcatchment.

	Catchment area (,000 ha)	Area woody 2010 V2.3 (,000 ha)	% of catchment woody in 2010
Baffle Creek	399	328	82
Barker and Barambah Creek	593	351	59
Boyne and Auburn Rivers	1299	831	64
Boyne River	9	7	79
Burrum River	121	107	88
Elliott River	71	41	58
Fraser Island	166	157	95
Gregory River	91	68	74
Isis River	53	46	88
Kolan River	290	220	76
Lower Burnett River	569	339	60
Lower Mary River	676	494	73
Noosa River	98	91	92
Upper Burnett River	860	572	67
Upper Mary River	271	208	77
Total	5574	3868	69

Woody vegetation clearing by replacement land cover

Table 5. Woody vegetation clearing rates in the Burnett–Mary Regional Group NRM region by replacement land cover.

Period	Woody vegetation clearing rate (,000 ha/yr) for						Total*
	Pasture	Crop	Forestry	Mining	Infrastructure	Settlement	
1988–91	11.638	1.968	2.020	0.033	0.622	0.411	16.692
1991–95	2.647	0.402	1.597	0.054	0.124	0.161	4.986
1995–97	6.214	2.486	2.488	0.114	0.155	0.371	11.828
1997–99	8.278	1.719	3.111	0.030	0.876	0.132	14.145
1999–00	21.117	0.919	2.428	0.066	0.571	0.259	25.359
2000–01	9.622	0.364	4.007	0.144	0.322	0.322	14.781
2001–02	11.161	0.100	2.888	0.115	0.167	0.137	14.568
2002–03	14.884	0.162	3.199	0.051	0.128	0.252	18.675
2003–04	22.562	0.023	1.449	0.161	0.113	0.059	24.367
2004–05	21.866	0.063	4.676	0.186	0.230	0.211	27.231
2005–06	18.324	0.047	5.266	0.127	0.062	0.096	23.923
2006–07	13.317	0.068	4.105	0.067	0.099	0.201	17.857
2007–08	10.388	0.094	4.512	0.063	0.288	0.536	15.880
2008–09	5.924	0.010	2.501	0.014	0.016	0.092	8.556
2009–10	4.120	0.026	4.982	0.047	0.116	0.123	9.415
2010–11	4.762	0.121	4.018	0.031	0.039	0.126	9.097

* Total excludes natural tree death.

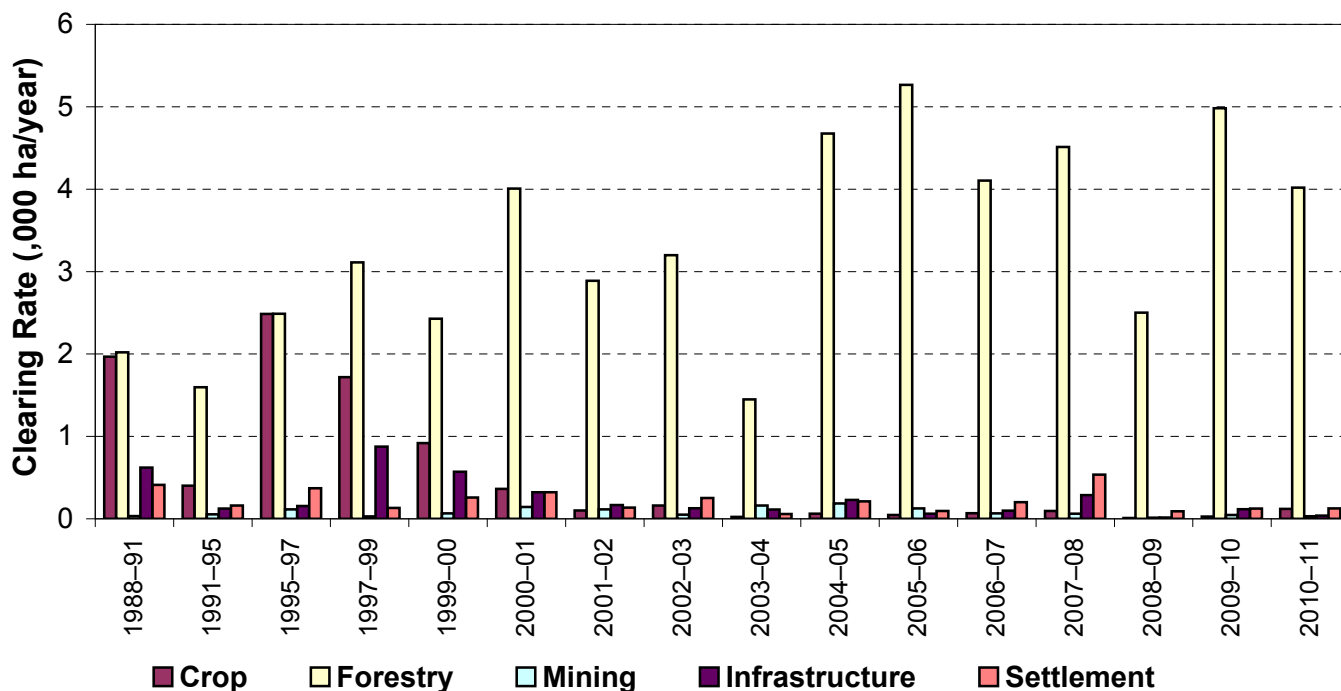
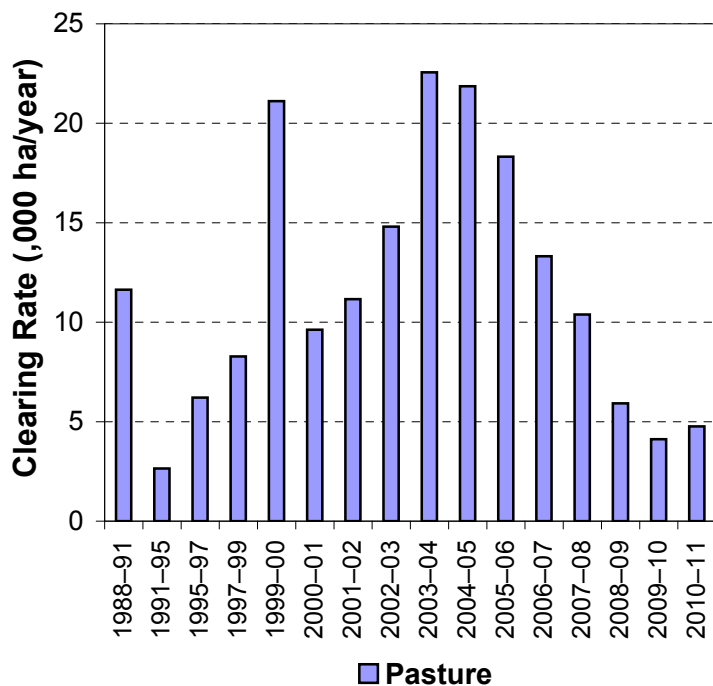


Figure 4. Woody vegetation clearing rates in the Burnett–Mary Regional Group NRM region by replacement land cover.

This fact sheet is 1 of 13 in a series detailing land cover change in Queensland's Natural Resource Management Regions. These fact sheets are addenda to the report: Department of Science, Information Technology, Innovation and the Arts (2014). *Land cover change in Queensland 2010–11: a Statewide Landcover and Trees Study (SLATS) Report, 2014*. Department of Science, Information Technology, Innovation and the Arts, Brisbane.

Please refer to this report for further background, methods and explanatory notes.

The Queensland Government supports and encourages the dissemination and exchange of information. However, copyright protects this document. The State of Queensland has no objection to this material being reproduced, made available online or electronically, provided it is for your personal, non-commercial use, or use within your organisation; the material remains unaltered; and the State of Queensland is recognised as the owner.

© The State of Queensland 2014.

For further information:
 Statewide Landcover and Trees Study
 41 Boggo Road
 Dutton Park QLD 4102
 Phone: 61 7 3170 5686
 Email: siproductdelivery@dnrm.qld.gov.au