

# Land cover change in the North Queensland Dry Tropics Natural Resource Management region

2010–11

## Summary

The woody vegetation clearing rate for the North Queensland Dry Tropics region for the 2010–11 era was 10,060 hectares per year (ha/yr). This was a significant increase over the amount of 5709 ha/yr reported for 2009–10, although this region had the highest amount of missed clearing identified at 7718 ha/yr. When taking this into consideration, the 2010–11 clearing rate has decreased since the previous era.

Remnant woody vegetation clearing (3079 ha/yr) accounted for 31 per cent of total woody vegetation clearing in the region, being very similar to the 2009–10 era.

Clearing to pasture represents 95 per cent of the total woody vegetation clearing in the region for the 2010–11 period.

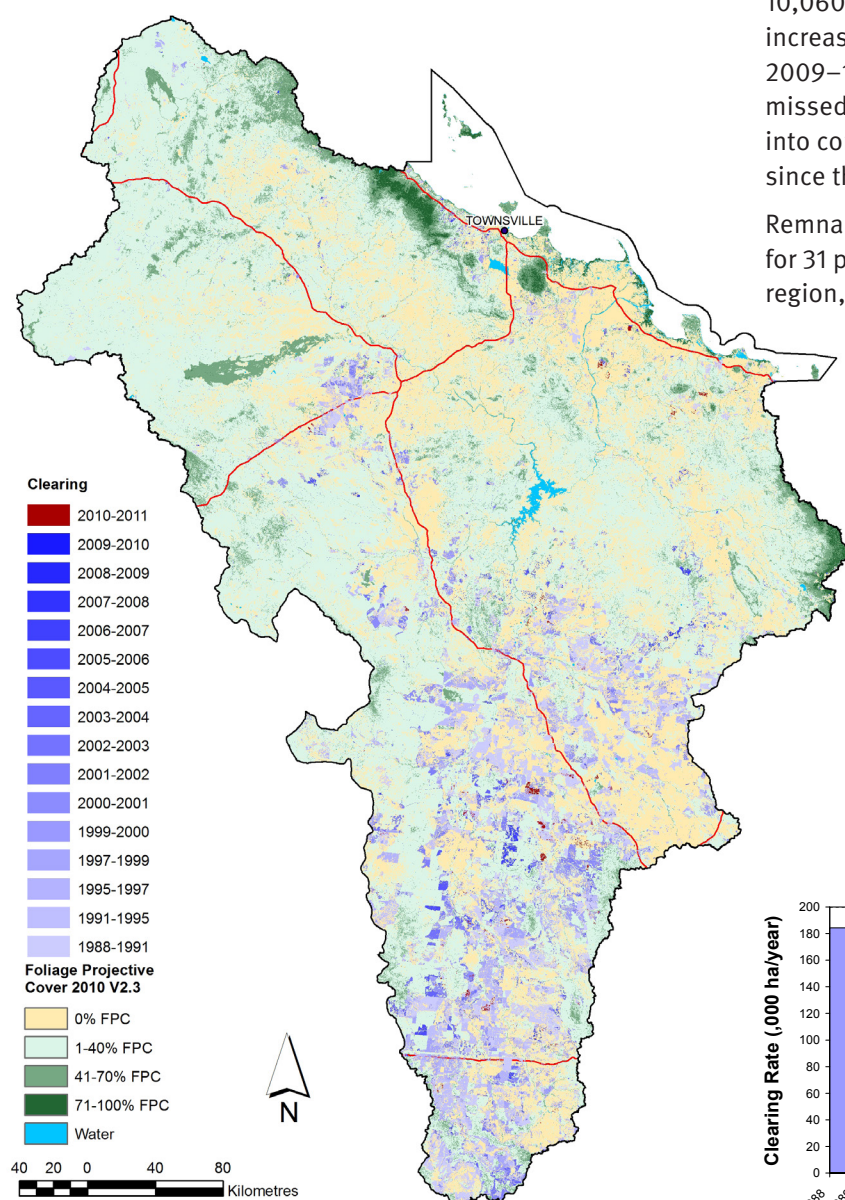


Figure 1. Woody vegetation clearing for each change period.

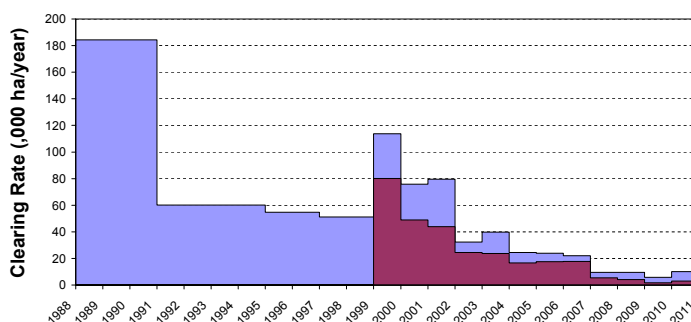


Figure 2. Woody vegetation clearing rates in the North Queensland Dry Tropics NRM region.

## Woody vegetation clearing by remnant status

Table 1. Remnant and non-remnant woody vegetation clearing rates in the North Queensland Dry Tropics NRM region.

Period	Woody vegetation clearing rate (,000 ha/yr) of		
	Non-remnant woody	Remnant woody*	Total woody
1999–00	33.557	80.086	113.642
2000–01	26.807	48.933	75.739
2001–02	35.783	43.840	79.622
2002–03	7.821	24.523	32.344
2003–04	16.091	23.679	39.770
2004–05	7.985	16.554	24.539
2005–06	6.423	17.468	23.891
2006–07	4.228	17.829	22.057
2007–08	4.069	5.476	9.545
2008–09	5.442	4.039	9.481
2009–10	3.991	1.717	5.709
2010–11	6.981	3.079	10.060

\* Regional ecosystem remnant mapping prior to 1999 not used in this analysis.

## Woody vegetation clearing by tenure

Table 2. Woody vegetation clearing rates in the North Queensland Dry Tropics NRM region by tenure.

Period	Woody vegetation clearing rate (,000 ha/yr) on				
	Freehold	Leasehold	Reserves	Other tenures	Total
1988–91	36.812	146.770	0.167	0.414	184.163
1991–95	12.932	47.020	0.015	0.087	60.054
1995–97	12.762	41.575	0.047	0.264	54.649
1997–99	10.722	39.573	0.023	0.765	51.082
1999–00	25.134	88.417	0.064	0.028	113.642
2000–01	5.860	69.865	0.008	0.006	75.739
2001–02	8.468	71.072	0.032	0.051	79.622
2002–03	3.440	28.887	0.010	0.006	32.344
2003–04	5.961	33.662	0.041	0.106	39.770
2004–05	3.619	20.867	0.052	0.001	24.539
2005–06	4.677	19.159	0.051	0.004	23.891
2006–07	3.325	18.710	0.017	0.005	22.057
2007–08	1.922	7.602	0.017	0.004	9.545
2008–09	1.125	8.342	0.013	0.000	9.481
2009–10	0.751	4.940	0.018	0.000	5.709
2010–11	2.907	7.124	0.024	0.004	10.059

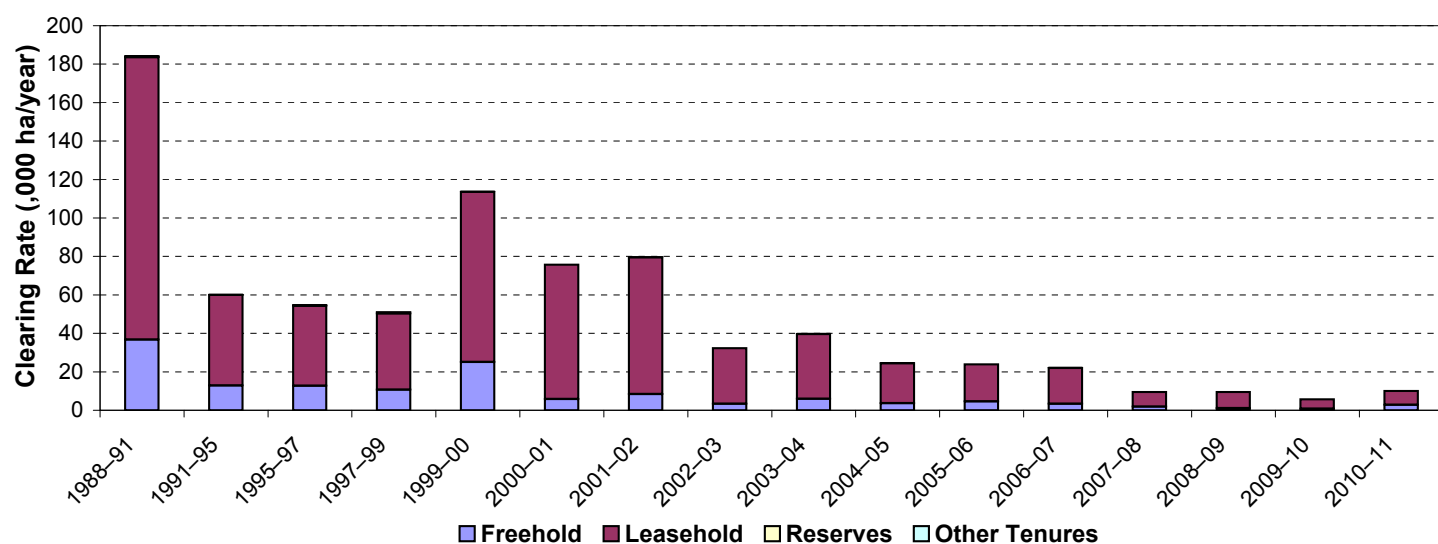


Figure 3. Woody vegetation clearing rates in the North Queensland Dry Tropics NRM region by tenure.

## Woody vegetation clearing by subcatchment

Table 3. Woody vegetation clearing rates in the North Queensland Dry Tropics NRM region by subcatchment #.

Woody vegetation clearing rate (,000 ha/yr) for	Period				
	2006–07	2007–08	2008–09	2009–10	2010–11
Barratta Creek	0.012	0.049	0.622	0.000	0.030
Black River	0.829	0.339	11.362	0.202	0.092
Bohle River	0.451	0.355	0.012	0.136	0.091
Bowen River	1.418	0.405	0.004	0.122	0.149
Don River	0.205	0.319	0.095	0.009	0.830
Haughton River	0.298	0.238	1.761	0.002	0.044
Lower Burdekin River	0.837	0.565	0.871	0.056	0.817
Proserpine river	0.000	0.000	0.003	0.002	0.000
Ross River	0.139	0.123	0.163	0.003	0.032
Suttor River	16.457	6.028	6.929	4.722	7.333
Upper Burdekin River	1.411	1.117	0.681	0.454	0.641
<b>Total</b>	<b>22.057</b>	<b>9.545</b>	<b>9.481</b>	<b>5.709</b>	<b>10.06</b>

# Please refer to Figure 26 of the main report (DSITIA, 2014) for the location of each subcatchment.

## Remaining woody vegetation

Table 4. Remaining woody vegetation in the North Queensland Dry Tropics NRM region by subcatchment.

	Catchment area (,000 ha)	Area woody 2010 V2.3 (,000 ha)	% of catchment woody in 2010
Barratta Creek	183	49	27
Black River	106	90	85
Bohle River	37	17	46
Bowen River	945	667	71
Don River	369	195	53
Haughton River	222	126	57
Lower Burdekin River	1047	585	56
Proserpine river	5	2	44
Ross River	134	82	61
Suttor River	7395	4340	59
Upper Burdekin River	3625	2911	80
<b>Total</b>	<b>14086</b>	<b>9081</b>	<b>64</b>

## Woody vegetation clearing by replacement land cover

Table 5. Woody vegetation clearing rates in the North Queensland Dry Tropics NRM region by replacement land cover.

Period	Woody vegetation clearing rate (,000 ha/yr) for						
	Pasture	Crop	Forestry	Mining	Infrastructure	Settlement	Total*
1988–91	178.877	2.170	0.000	0.335	2.756	0.091	184.229
1991–95	58.008	1.335	0.007	0.162	0.431	0.112	60.055
1995–97	50.011	3.288	0.001	0.321	0.941	0.096	54.658
1997–99	47.893	1.490	0.033	0.139	1.478	0.050	51.083
1999–00	111.344	0.218	0.009	0.059	1.791	0.221	113.642
2000–01	72.627	0.309	0.004	0.067	2.636	0.096	75.739
2001–02	77.296	0.002	0.000	0.065	2.256	0.002	79.622
2002–03	31.159	0.019	0.000	0.053	1.113	0.000	32.344
2003–04	37.590	0.080	0.000	0.182	1.704	0.214	39.770
2004–05	23.506	0.000	0.019	0.193	0.598	0.223	24.539
2005–06	22.982	0.033	0.140	0.208	0.407	0.120	23.891
2006–07	20.770	0.002	0.000	0.384	0.482	0.419	22.057
2007–08	8.630	0.016	0.008	0.303	0.300	0.288	9.545
2008–09	8.760	0.005	0.014	0.114	0.540	0.047	9.481
2009–10	5.376	0.000	0.005	0.116	0.119	0.092	5.709
2010–11	9.562	0.001	0.007	0.122	0.270	0.098	10.060

\* Total excludes natural tree death.

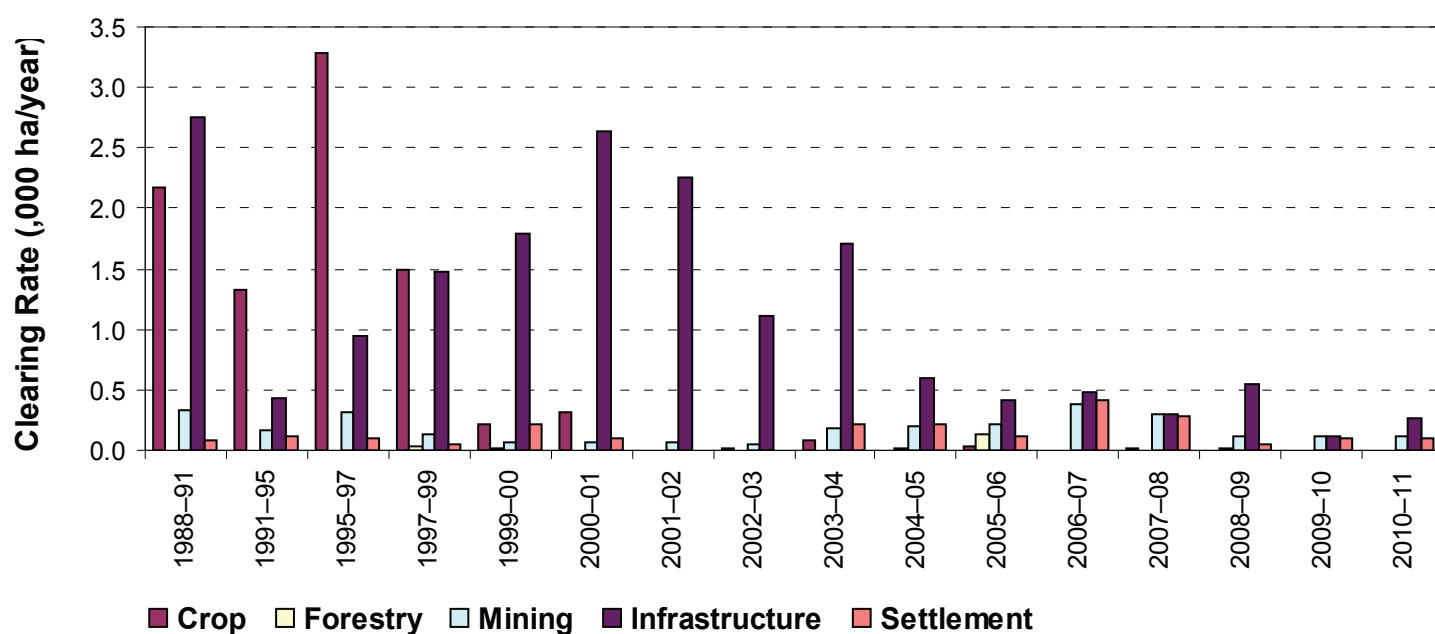
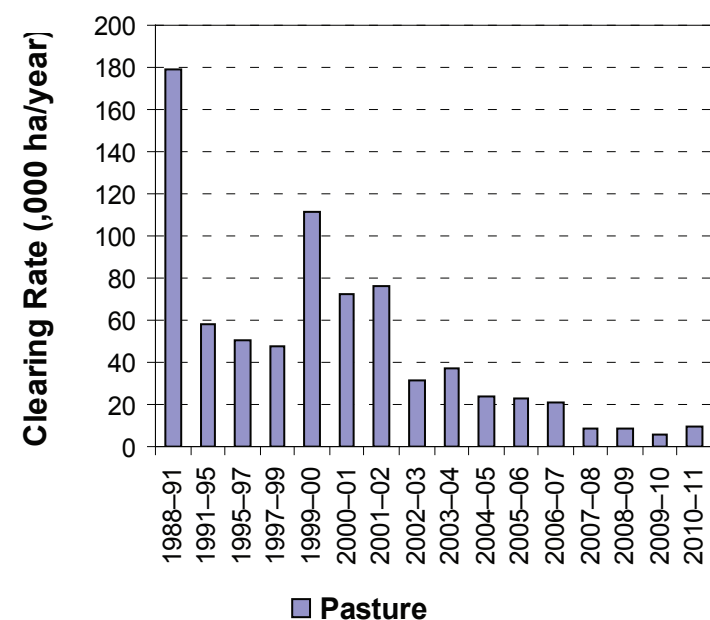


Figure 4. Woody vegetation clearing rates in the North Queensland Dry Tropics NRM region by replacement land cover.

This fact sheet is 7 of 13 in a series detailing land cover change in Queensland's Natural Resource Management Regions. These fact sheets are addenda to the report: Department of Science, Information Technology, Innovation and the Arts (2014). *Land cover change in Queensland 2010-11: a Statewide Landcover and Trees Study (SLATS) Report, 2014*. Department of Science, Information Technology, Innovation and the Arts, Brisbane.

Please refer to this report for further background, methods and explanatory notes.

The Queensland Government supports and encourages the dissemination and exchange of information. However, copyright protects this document. The State of Queensland has no objection to this material being reproduced, made available online or electronically, provided it is for your personal, non-commercial use, or use within your organisation; the material remains unaltered; and the State of Queensland is recognised as the owner.

© The State of Queensland 2014.

For further information:  
Statewide Landcover and Trees Study  
41 Boggo Road  
Dutton Park QLD 4102  
Phone: 61 7 3170 5686  
Email: [siproductdelivery@dnrm.qld.gov.au](mailto:siproductdelivery@dnrm.qld.gov.au)