

# Land cover change in the Northern Gulf Resource Management Group Natural Resource Management region

2010–11

## Summary

In the 2010–11 era, the woody vegetation clearing rate in the Northern Gulf region decreased for the fourth consecutive era to a rate of 1302 hectares per year (ha/yr). This represented a 76 per cent reduction in the clearing rate recorded in 2006–07.

Clearing of remnant woody vegetation comprised 90 per cent of the woody vegetation clearing in the region.

Replacement land cover classes for the woody vegetation clearing in 2010–11 were mostly for pasture and infrastructure, with 62 per cent of clearing to pasture and 38 per cent to infrastructure.

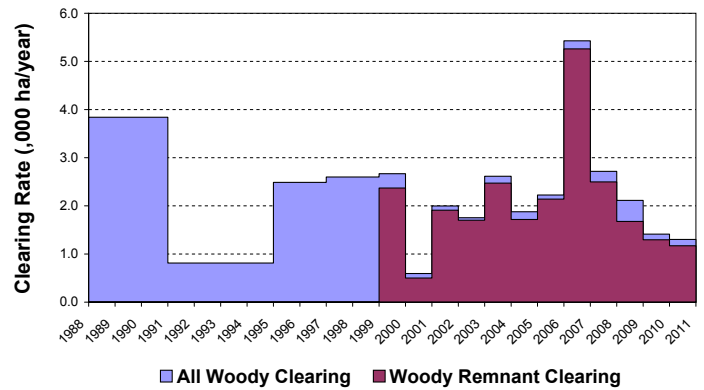


Figure 1. Woody vegetation clearing rates in the Northern Gulf Resource Management Group NRM region.

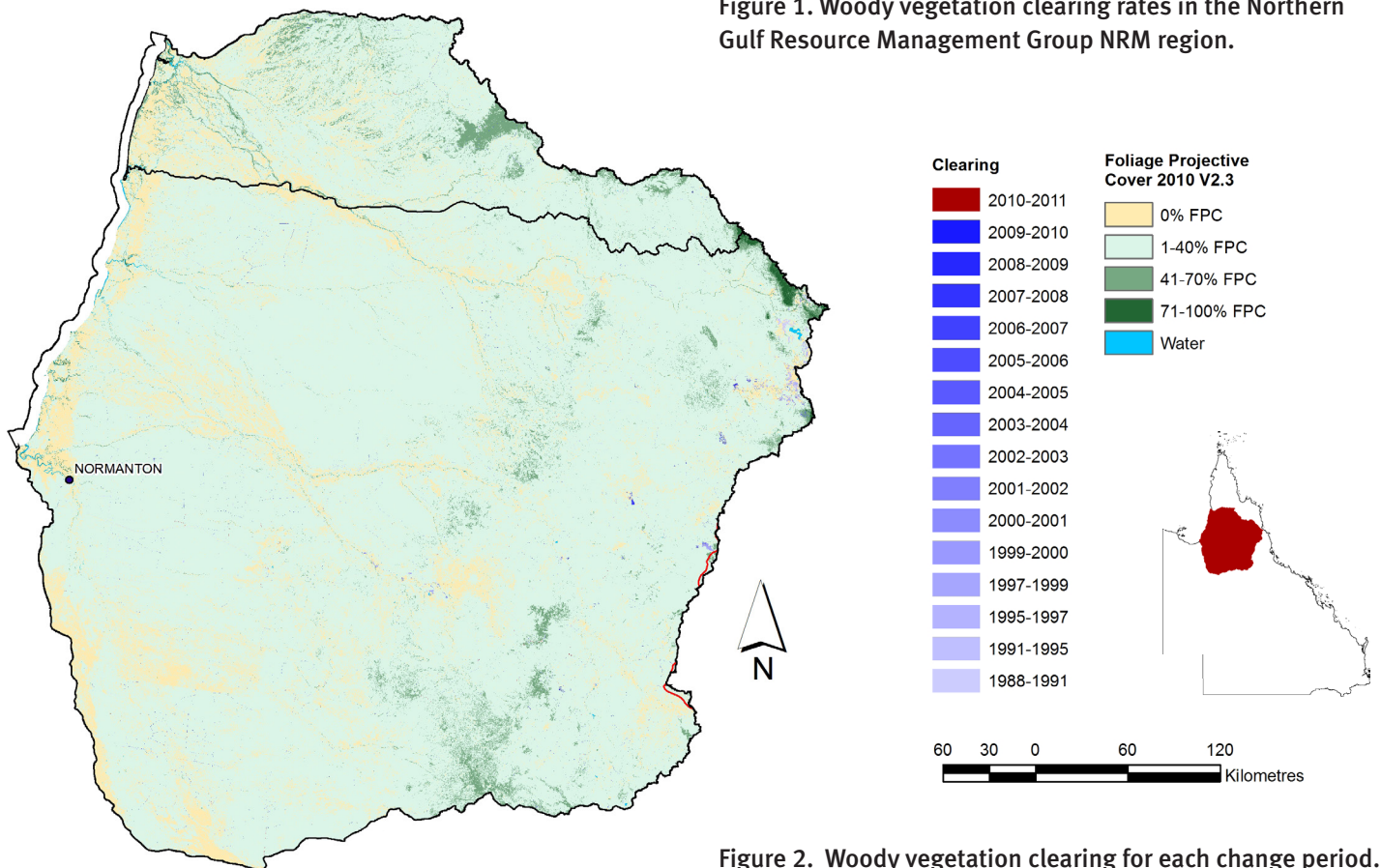


Figure 2. Woody vegetation clearing for each change period.

Note that the Northern Gulf Resource Management Group Natural Resource Management region overlaps the Cape York Natural Resource Management region.

## Woody vegetation clearing by remnant status

Table 1. Remnant and non-remnant woody vegetation clearing rates in the Northern Gulf Resource Management Group NRM region.

Period	Woody vegetation clearing rate (,000 ha/yr) of		
	Non-remnant woody	Remnant woody*	Total woody
1999–00	0.298	2.370	2.668
2000–01	0.094	0.501	0.595
2001–02	0.089	1.910	1.998
2002–03	0.051	1.702	1.753
2003–04	0.142	2.473	2.615
2004–05	0.161	1.717	1.878
2005–06	0.085	2.140	2.226
2006–07	0.167	5.261	5.428
2007–08	0.219	2.497	2.716
2008–09	0.437	1.677	2.114
2009–10	0.119	1.295	1.413
2010–11	0.131	1.171	1.302

\* Regional ecosystem remnant mapping prior to 1999 not used in this analysis.

## Woody vegetation clearing by tenure

Table 2. Woody vegetation clearing rates in the Northern Gulf Resource Management Group NRM region by tenure.

Period	Woody vegetation clearing rate (,000 ha/yr) on				
	Freehold	Leasehold	Reserves	Other tenures	Total
1988–91	1.651	2.138	0.016	0.036	3.841
1991–95	0.514	0.260	0.008	0.028	0.810
1995–97	0.927	1.492	0.042	0.025	2.487
1997–99	0.807	1.739	0.033	0.018	2.596
1999–00	1.012	1.612	0.022	0.022	2.668
2000–01	0.202	0.371	0.017	0.006	0.595
2001–02	0.138	1.854	0.002	0.004	1.998
2002–03	0.129	1.622	0.000	0.002	1.753
2003–04	0.235	2.365	0.015	0.000	2.615
2004–05	0.042	1.835	0.001	0.000	1.878
2005–06	0.386	1.833	0.007	0.000	2.226
2006–07	0.201	5.221	0.003	0.004	5.428
2007–08	0.151	2.558	0.006	0.001	2.716
2008–09	0.497	1.580	0.037	0.000	2.114
2009–10	0.084	1.325	0.005	0.000	1.413
2010–11	0.038	1.264	0.001	0.000	1.302

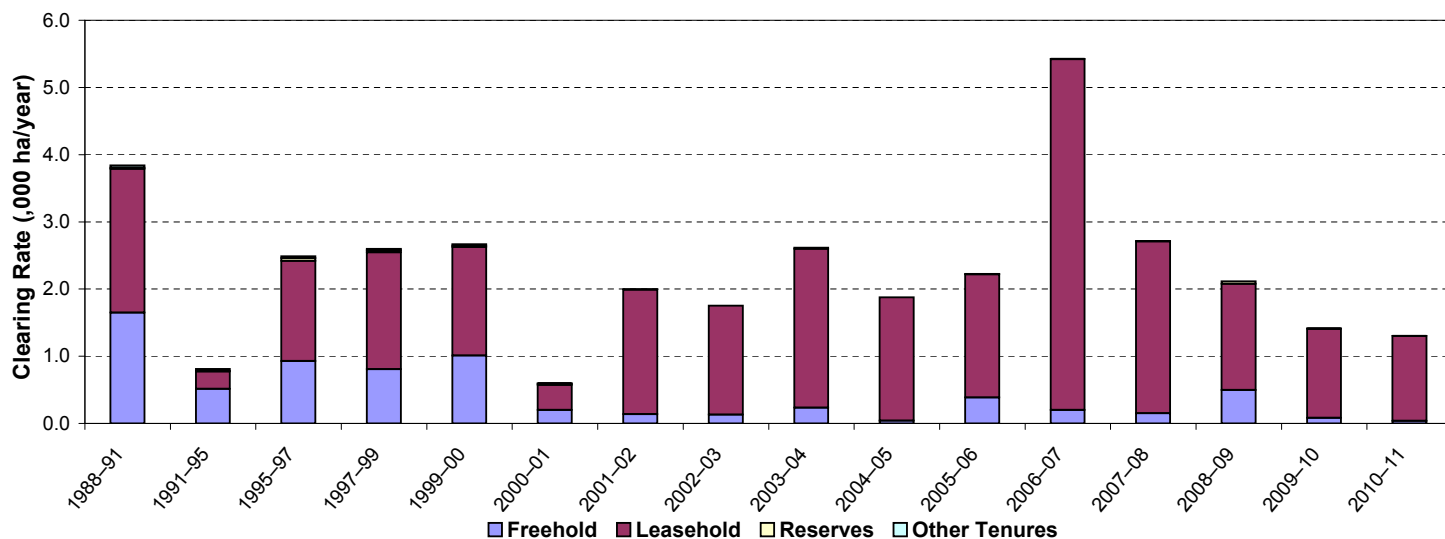


Figure 3. Woody vegetation clearing rates in the Northern Gulf NRM Group Resource Management region by tenure.

## Woody vegetation clearing by subcatchment

Table 3. Woody vegetation clearing rates in the Northern Gulf Resource Management Group NRM region by subcatchment #.

Woody vegetation clearing rate (,000 ha/yr) for	Period				
	2006–07	2007–08	2008–09	2009–10	2010–11
Alice River	0.056	0.033	0.258	0.064	0.072
Einasleigh River	0.648	0.722	0.377	0.172	0.356
Gilbert River	0.345	0.265	0.131	0.121	0.138
Mitchell River	2.129	0.673	0.259	0.259	0.107
Norman River	1.315	0.533	0.378	0.453	0.499
Palmer River	0.032	0.046	0.109	0.125	0.031
Staaten River	0.642	0.171	0.078	0.080	0.015
Walsh River	0.263	0.274	0.525	0.140	0.084
<b>Total</b>	<b>5.428</b>	<b>2.716</b>	<b>2.114</b>	<b>1.413</b>	<b>1.302</b>

# Please refer to Figure 26 of the main report (DSITIA, 2014) for the location of each subcatchment.

## Remaining woody vegetation

Table 4. Remaining woody vegetation in the Northern Gulf Resource Management Group NRM region by subcatchment.

	Catchment area (,000 ha)	Area woody 2010 V2.3 (,000 ha)	% of catchment woody in 2010
Alice River	1294	1160	90
Einasleigh River	2437	2220	91
Gilbert River	2203	1892	86
Mitchell River	4143	3584	87
Norman River	5042	4312	86
Palmer River	832	802	96
Staaten River	2557	2383	93
Walsh River	896	805	90
<b>Total</b>	<b>19404</b>	<b>17157</b>	<b>88</b>

## Woody vegetation clearing by replacement land cover

Table 5. Woody vegetation clearing rates in the Northern Gulf Resource Management Group NRM region by replacement land cover.

Period	Woody vegetation clearing rate (,000 ha/yr) for						Total*
	Pasture	Crop	Forestry	Mining	Infrastructure	Settlement	
1988–91	1.696	0.432	0.000	0.104	1.608	0.000	3.841
1991–95	0.100	0.633	0.000	0.021	0.058	0.000	0.812
1995–97	0.501	1.065	0.000	0.119	0.787	0.015	2.488
1997–99	0.957	0.495	0.055	0.051	1.041	0.000	2.599
1999–00	1.302	0.264	0.013	0.008	1.081	0.000	2.668
2000–01	0.198	0.089	0.000	0.003	0.305	0.000	0.595
2001–02	0.680	0.046	0.000	0.005	1.268	0.000	1.998
2002–03	0.628	0.013	0.000	0.001	1.111	0.000	1.753
2003–04	1.808	0.000	0.000	0.000	0.807	0.000	2.615
2004–05	0.890	0.005	0.000	0.002	0.981	0.000	1.878
2005–06	1.906	0.013	0.001	0.006	0.300	0.000	2.226
2006–07	5.316	0.000	0.000	0.002	0.110	0.000	5.428
2007–08	2.560	0.000	0.000	0.038	0.118	0.000	2.716
2008–09	1.702	0.001	0.000	0.006	0.398	0.007	2.114
2009–10	1.127	0.017	0.000	0.007	0.262	0.001	1.413
2010–11	0.809	0.000	0.000	0.001	0.492	0.000	1.302

\* Total excludes natural tree death.

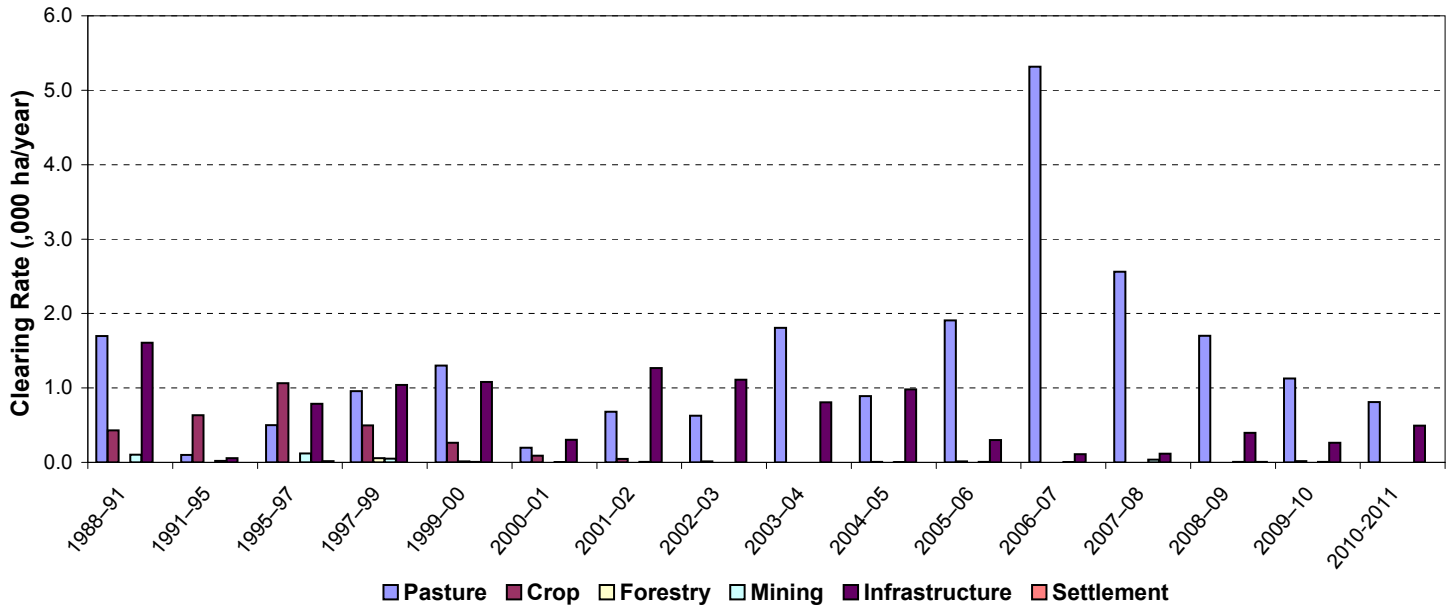


Figure 4. Woody vegetation clearing rates in the Northern Gulf Resource Management Group NRM Region by replacement land cover.

This fact sheet is 6 of 13 in a series detailing land cover change in Queensland's Natural Resource Management Regions. These fact sheets are addenda to the report: Department of Science, Information Technology, Innovation and the Arts (2014). *Land cover change in Queensland 2010-11: a Statewide Landcover and Trees Study (SLATS) Report, 2014*. Department of Science, Information Technology, Innovation and the Arts, Brisbane.

Please refer to this report for further background, methods and explanatory notes.

The Queensland Government supports and encourages the dissemination and exchange of information. However, copyright protects this document. The State of Queensland has no objection to this material being reproduced, made available online or electronically, provided it is for your personal, non-commercial use, or use within your organisation; the material remains unaltered; and the State of Queensland is recognised as the owner.

© The State of Queensland 2014.

For further information:  
 Statewide Landcover and Trees Study  
 41 Boggo Road  
 Dutton Park QLD 4102  
 Phone: 61 7 3170 5686  
 Email: siproductdelivery@dnrm.qld.gov.au