

REFERENCE

SANDPLAINS (S)

S1 VINETREE (270 km²)
Flat to gently undulating plains; gidgee, sandalwood open woodland and eastern dead finish/whitewood/vinetree/boonaree/wilga/santalwood/baobab tall shrubland to low open woodland to poplar box/walpole open woodland. Occasional gidgee low open woodland and brigalow open woodland; moderately deep to deep, red earths and texture contrast soils, earthy sands and some grey clays.

S2 BAYWATER (400 km²)
Flat to very low sloping plains (rain-on areas); mulga low open woodland with emergent poplar box or mulga/poplar box open woodland to poplar box/santalwood open woodland. Occasional gidgee low open woodland and brigalow open woodland; moderately deep to deep, red earths and texture contrast soils.

HARD MULGA LANDS (H)

H1 PINNACLE (800 km²)
Gently undulating convex plains and low hills; mulga, open scrub to low open woodland with emergent Dawson gum or mulga open woodland. Minor areas of mulga/bastard mulga tall open shrubland; very shallow to shallow, red earths and lithosols.

DISSECTED RESIDUALS (R)

R1 WINDOGA (2 025 km²)
Dissected low hills, escarp, gorges, mesas, buttes, benches, lancewood low woodland to woodland on upper slopes with silver-leaved ironbark and narrow-leaved ironbark open woodland on the lower slopes; minor occurrences of yellowbox, lacewood, Acacia spp. tall open shrubland on mesa tops; lithosols, shallow texture contrast soils and yellow earths with open exposed rock.

R2 ANDURBA (530 km²)
Mountains and hills of the Great Dividing Range complex; deeply dissected terrain; lancewood, sandalwood woodland to woodland on the scarps with silver-leaved ironbark/narrow-leaved ironbark (open) woodland to wedding bush shrubland on valley floors; lithosols and shallow rocky soils.

R3 ADONI (40 km²)
Top of dissected tablelands, mesas and buttes; silver-leaved ironbark, cypress pine open woodland to banyan, Acacia riparia tall open shrubland; shallow texture contrast soils and shallow red earths.

R4 NORLLA (210 km²)
Scarps and tops of dissected tablelands, mesas and buttes; banded low woodland on the tops of tablelands; mulga, bastard mulga, banyan, tall open shrubland with lancewood on the low slopes; tall open shrubland with brigalow, Dawson gum open woodland on lower slopes; lithosols, exposed rock and shallow red earths.

UNDULATING GIDGEE LANDS (G)

G1 EVORA (2 830 km²)
Flat to gently undulating plains; gidgee, wilga open woodland to low open woodland or gidgee, sandalwood open woodland to low open woodland; occasionally gidgee tall shrubland; deep to very deep, brown and grey cracking clays with variable stone cover and weak gilgai development.

G2 ILENDON (820 km²)
Flat to gently undulating plains; gidgee low woodland; deep, brown cracking clays and associated texture contrast soils, frequently with stone cover and weak gilgai development.

G3 WOOLLA (520 km²)
Gently undulating plains; gidgee, brigalow, sandalwood low woodland to woodland; deep, brown cracking clays with scattered stone and moderate gilgai development.

UNDULATING BRIGALOW LANDS (B)

B1 UNVALE (2 480 km²)
Flat to gently undulating plains; brigalow, belah, wilga open woodland to woodland and brigalow, sandalwood low open woodland to woodland with silver-leaved ironbark, eastern dead finish low woodland on ridges; moderately deep to deep, grey and brown cracking clays and associated texture contrast soils; usually with light stone cover and weak gilgai development.

B2 MARETO (510 km²)
Flat to gently undulating plains; brigalow, boonaree tall shrubland with brigalow, mountain yappayah low woodland on rises; occasionally mountain yappayah woodland; moderately deep to deep, brown and grey cracking clays with stone cover and weak gilgai development.

B3 MARSTEN (460 km²)
Flat to gently undulating plains; brigalow, sandalwood woodland and brigalow, Dawson gum open woodland on rises and poplar box woodland on the sandy flats; moderately deep to deep, grey and brown cracking clays and associated texture contrast soils; with stone cover and moderate gilgai development.

B4 HIGHLANDS (890 km²)
Gently undulating to undulating plains, lower slopes of scarps and incised valleys; sparse herbfields with scattered brigalow and sandalwood to brigalow tall shrubland to mountain yappayah open woodland; shallow to moderately deep, brown and grey clays and associated texture contrast soils; usually with stone cover and exposed rocks.

B5 STIRTON (280 km²)
Gently undulating plains; brigalow, tall open shrubland with emergent whitewood; moderately deep to deep, grey cracking clays with incipient gilgai development.

WOODED DOWNS (T)

T1 MACKUNDA (1 560 km²)
Gently undulating plains; Mitchell grass wooded open tussock grassland to tall shrubland of vine trees/eastern dead finish/baobab and western bloodwood to silver-leaved ironbark open woodland; minor occurrences of Mitchell grass open tussock grassland; shallow to moderately deep, brown and grey clays with linear gilgais sometimes prominent on the deep, grey cracking clays.

IMPORTANT NOTES

- In some mapping units mixtures of two or more land systems may occur. In these cases component land systems are indicated on the land system map. e.g. $\frac{F1T2}{T2}$ represents a complex of Allaru (F1) and Navene (T2) land systems, Allaru being the dominant land system.
- Slash (/) means with or without.
- Working sheets at a scale of 1:250 000 are available to users working in the area. These sheets show additional detail.

KEY TO 1:250 000 AREAS

MUTTABURRA	GALILEE	CLERMONT
LONGREACH	JERICHO	EMERALD
BLACKALL	TAMBO	SPRINGSURE
ADAVALE	AUGATHELLA	EDDYSTONE
QUILPIE	CHARLEVILLE	MITCHELL

LANDSAT COVERAGE

Imagery recorded on discrete spectral bands with Multispectral Scanner (MSS) and Return Beam Vidicon (RB.Vi) on NASA Earth Resources Technology Satellite (ERTS 1). Orbital altitude 920 km.

Printing details:-

	MSS	RBV
Yellow	Band 4	1
Magenta	" 5	2
Cyan	" 7	3

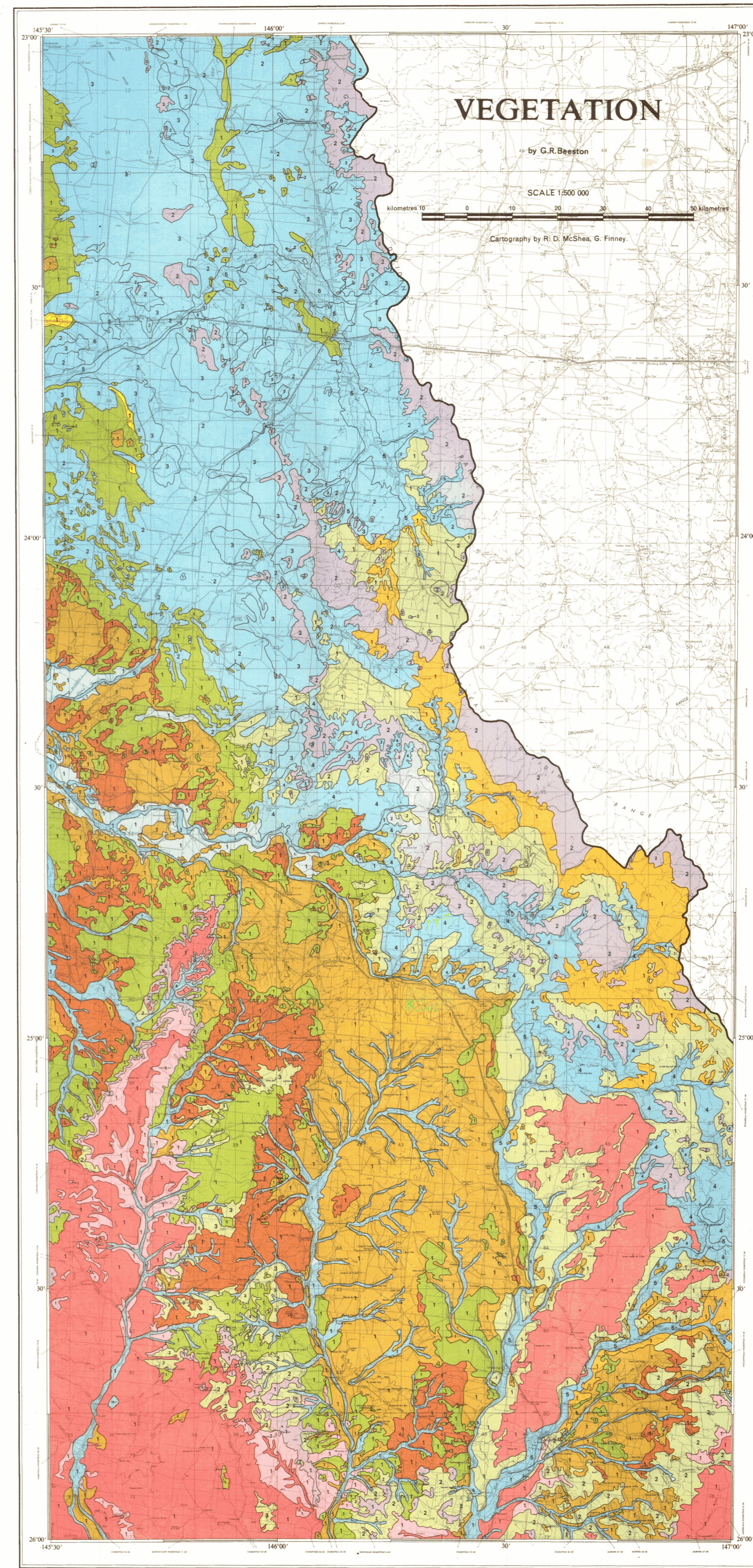
DISCLAIMER:
This is a scanned image and some detail may be illegible or lost. While every care is taken to ensure the accuracy of this product, the Department of Natural Resources and Mines makes no representations or warranties about its accuracy, reliability, completeness or suitability for any particular purpose and disclaims all responsibility and all liability (including without limitation, liability in negligence) for all expenses, losses, damages (including indirect or consequential damage) and costs which you might incur as a result of the product being inaccurate or incomplete in any way for any reason.

COMPILATION: All photo interpretation, mapping and grouping of land systems by E.J. Turner (Division of Land Utilisation); Description of land systems by E.J. Turner and G.R. Beeston (Botany Branch, Division of Plant Industry); Vegetation map compiled from Land Systems map by G.R. Beeston (Botany Branch, Division of Plant Industry).

PREPARED by Division of Land Utilisation, Queensland Department of Primary Industries.

CARTOGRAPHIC BASE compiled by Division of Land Utilisation, Queensland Department of Primary Industries from positives supplied by Division of National Mapping, Department of National Resources, Canberra.

PRINTED at the Government Printing Office, Brisbane, 1977, from negatives supplied by Prolith Graphic Art.



REFERENCE

EUCALYPT PREDOMINANT ASSOCIATIONS (E)

- Coolibah/river red gum low open to open-woodland. Occasionally coolibah open-woodland and associated herbfields.
- Silver-leaved ironbark open-woodland with poplar box open-woodland to woodland on lower areas. Minor areas of desert gum, bloodwood woodland and desert oak/rakee open-woodland.
- Groved, yellow jack, bloodwood shrubby open-woodland to woodland with tea-tree, banded tall open-shrubland to shrubby open woodland. Occasionally poplar box, desert gum open-woodlands.
- Poplar box shrubby open-woodland with brigalow low open-woodland occurring throughout.
- River red gum, tea-tree, river oak shrubby open-woodland on the channel. Poplar box/silver-leaved ironbark open-woodland to woodland on upper levees. Mountain Bay Ash, Argophora open-woodland on sand sheets.
- Poplar box/sandalwood woodland on levees. Coolibah/brigalow/gidgee woodland on flood plains.

GIDGEE PREDOMINANT ASSOCIATIONS (G)

- Gidgee/wilga or gidgee/sandalwood or gidgee/sandalwood/brigalow low open-woodland to open-woodland. Occasionally gidgee tall shrubland.

MULGA PREDOMINANT ASSOCIATIONS

Soft Mulga Lands (M)

- Mulga low open-woodland with emergent poplar box or mulga/poplar box open-woodland, to poplar box/sandalwood open-woodland. Occasionally gidgee low open-woodland and brigalow open-woodland.

Hard Mulga Lands (H)

- Mulga open-scrub to low open-woodlands with emergent Dawson gum, or mulga open-woodland. Minor areas of mulga/bastard mulga tall open-shrubland.

OTHER ACACIA PREDOMINANT ASSOCIATIONS (R)

- Bendee low woodland on the crests. On the scarps mulga/bastard mulga/banyan tall open-shrubland with lancewood. Mountain Yappayah/brigalow, Dawson gum open-woodland on lower slopes.
- Bendee/lancewood low woodland to woodland and silver-leaved ironbark/cypress pine open-woodland with banyan/acacia riparia tall open shrubland on upper slopes and crests. Silver-leaved ironbark open-woodland to woodland on lower slopes and valleys.

SPINFEX PREDOMINANT ASSOCIATION (L)

- Portulacae spinifex hummock grassland. Long fruited bloodwood woodland and occasionally desert gum open-woodland on low rises.

MITCHELL GRASS PREDOMINANT ASSOCIATIONS

Wooded (T)

- Mitchell grass wooded open-tussock grassland to vine trees/eastern dead finish/baobab/boonaree/western bloodwood tall shrubland to woodland.

Non Wooded (F)

- Mitchell grasses open-tussock grassland to tussock grassland with associated sparse-herbfields.

BRIGALOW PREDOMINANT ASSOCIATIONS (B)

- Brigalow/belah open-woodland and brigalow/sandalwood low open-woodland to woodland. Brigalow/Dawson gum open-woodland on rises. Poplar box woodland on sandy flats.
- Brigalow tall shrubland to low woodland with emergent Dawson gum/boonaree/mountain yappayah. Mountain yappayah/sandalwood open-woodland to woodland in places.
- Brigalow tall open-shrubland with emergent whitewood.

CYPRESS PINE PREDOMINANT ASSOCIATION (C)

- Cypress pine woodland with silver-leaved ironbark/poplar box, sandalwood open-woodland throughout.

SANDPLAIN ASSOCIATION (S)

- Gidgee/sandalwood open-woodland and eastern dead finish/whitewood/vinetree/boonaree/wilga/sandalwood tall shrubland to low woodland. Occasionally poplar box/wilga open-woodland.

* Note Slash (/) means with or without.

KEY TO ADJOINING SURVEYS

WESTERN ARID REGION LAND USE STUDY - PART 4

LAND SYSTEMS AND VEGETATION