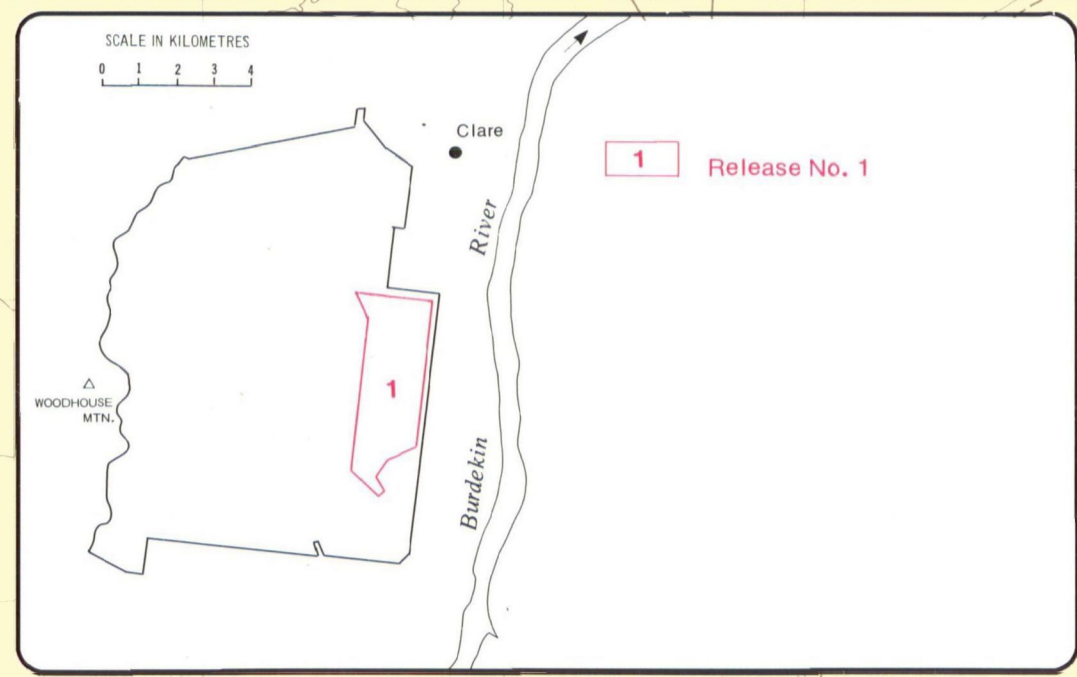


LAND SUITABILITY FOR RICE

BURDEKIN RIVER IRRIGATION AREA
MULGRAVE SECTION

QUEENSLAND
DEPARTMENT OF PRIMARY INDUSTRIES

By J.I. McClurg, R.J. Tucker and T.E. Donnellan

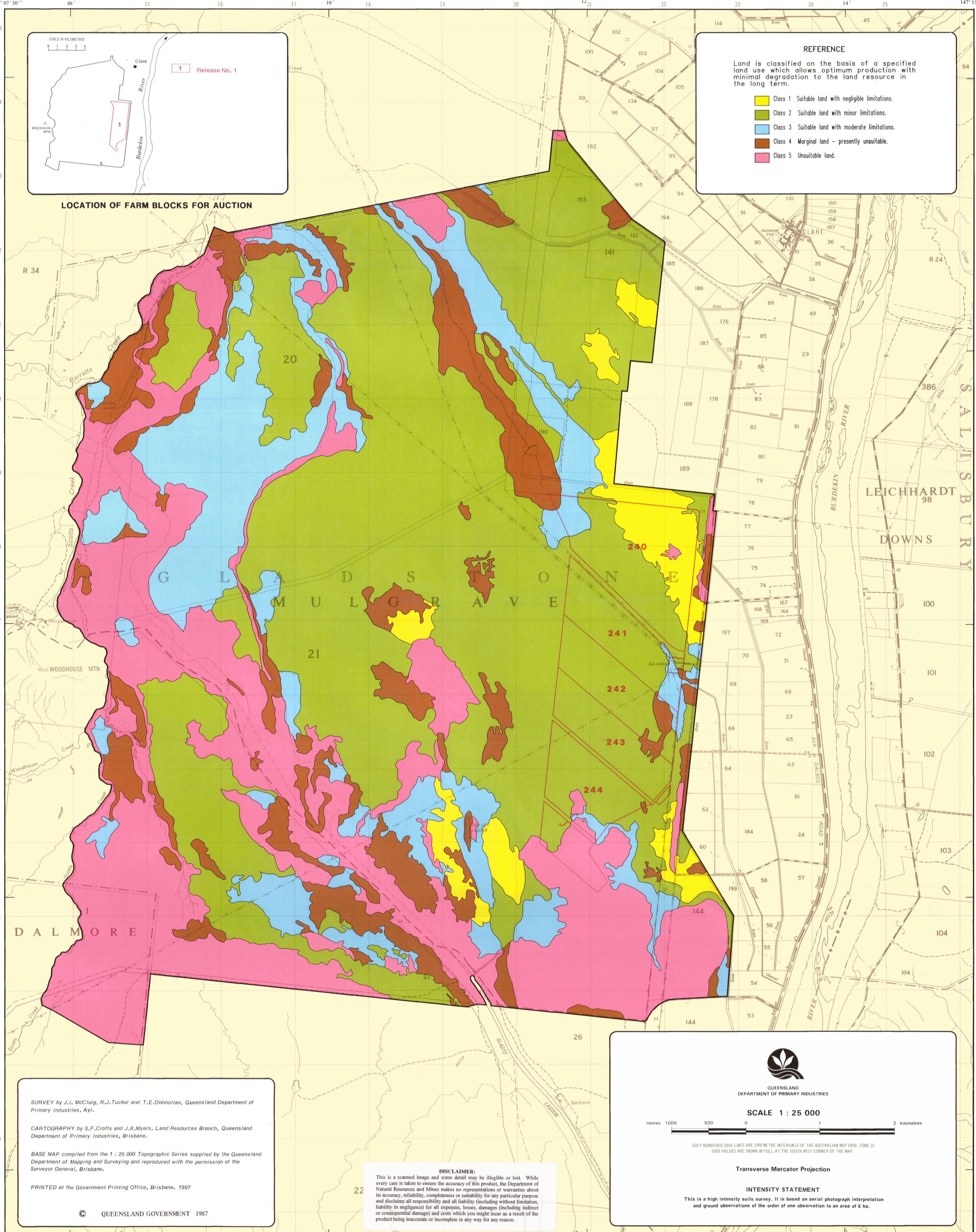


LOCATION OF FARM BLOCKS FOR AUCTION

REFERENCE

Land is classified on the basis of a specified land use which allows optimum production with minimal degradation to the land resource in the long term.

- Class 1 Suitable land with negligible limitations.
- Class 2 Suitable land with minor limitations.
- Class 3 Suitable land with moderate limitations.
- Class 4 Marginal land - presently unsuitable.
- Class 5 Unsuitable land.



SURVEY by J.I. McClurg, R.J. Tucker and T.E. Donnellan, Queensland Department of Primary Industries, Ayr.

CARTOGRAPHY by S.F. Crofts and J.K. Myers, Land Resources Branch, Queensland Department of Primary Industries, Brisbane.

BASE MAP compiled from the 1 : 25 000 Topographic Series supplied by the Queensland Department of Mapping and Surveying and reproduced with the permission of the Surveyor General, Brisbane.

PRINTED at the Government Printing Office, Brisbane. 1987

© QUEENSLAND GOVERNMENT 1987

DISCLAIMER:
This is a scanned image and some detail may be illegible or lost. While every care is taken to ensure the accuracy of this product, the Department of Natural Resources and Mines makes no representations or warranties about its accuracy, reliability, completeness or suitability for any particular purpose and disclaims all responsibility and all liability (including without limitation, liability in negligence) for all expenses, losses, damages (including indirect or consequential damage) and costs which you might incur as a result of the product being inaccurate or incomplete in any way for any reason.

QUEENSLAND
DEPARTMENT OF PRIMARY INDUSTRIES

SCALE 1 : 25 000

metres 1000 500 0 1 2 kilometres

GREY NUMBERED GRID LINES ARE 1000 METRE INTERVALS OF THE AUSTRALIAN MAP GRID, ZONE 55. GRID VALUES ARE SHOWN IN FULL AT THE SOUTH WEST CORNER OF THE MAP.

Transverse Mercator Projection

INTENSITY STATEMENT
This is a high intensity soils survey. It is based on aerial photograph interpretation and ground observations of the order of one observation to an area of 6 ha.