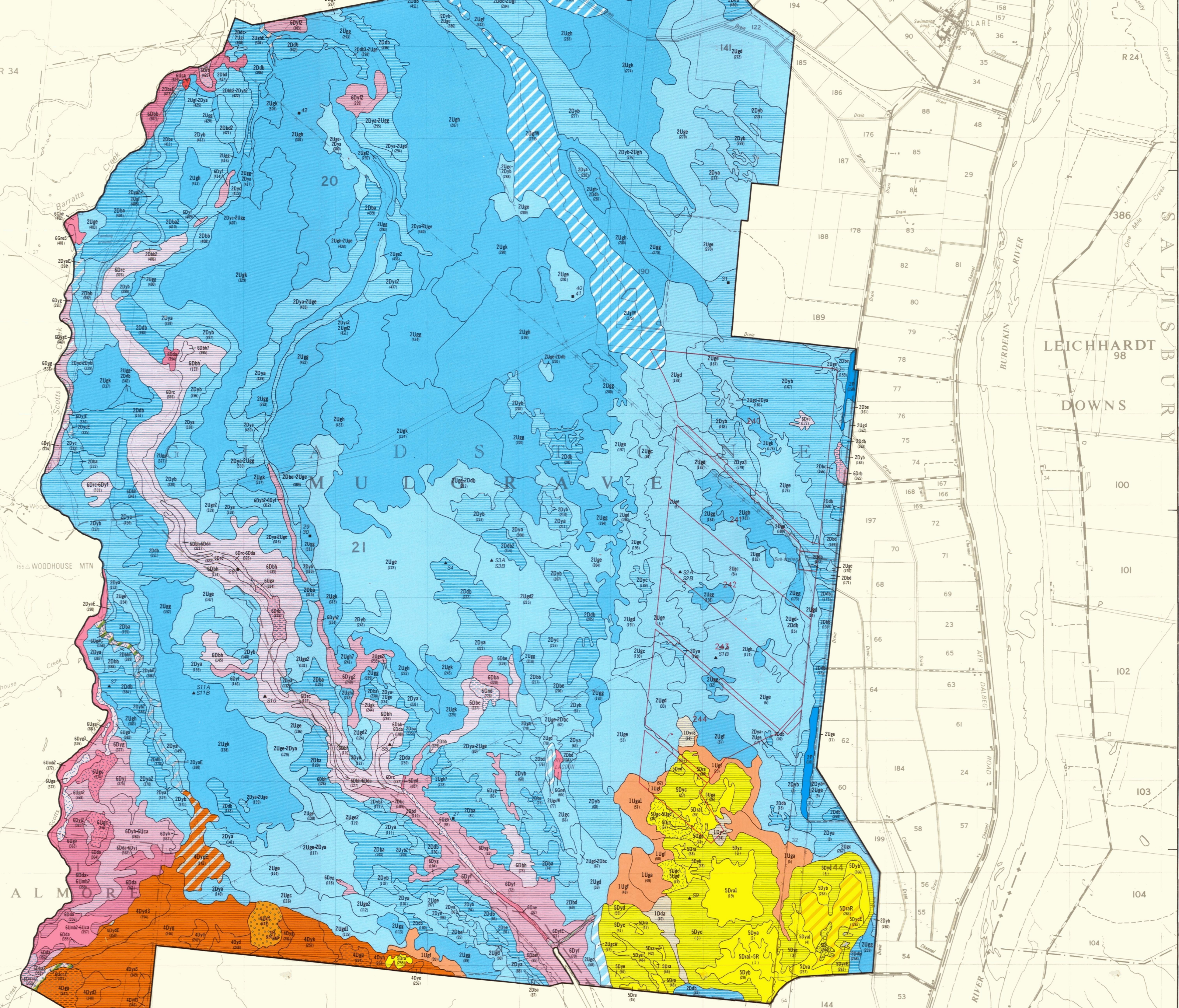


LOCALITY MAP



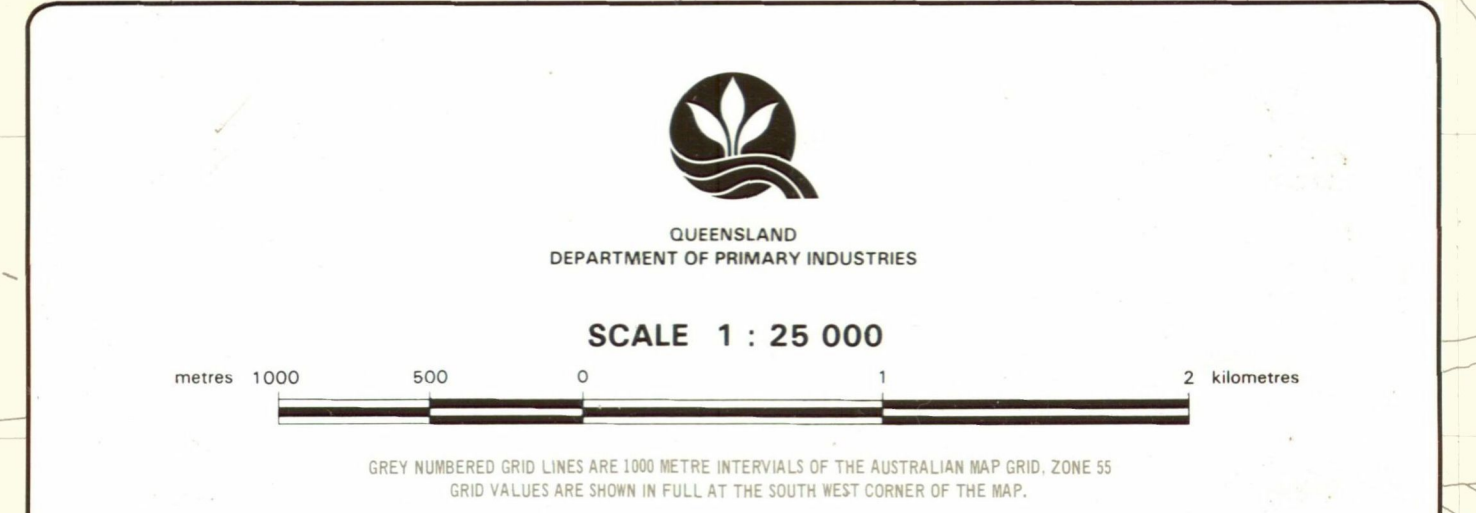
SURVEY by J.I. McClurg, R.J. Tucker and T.E. Donnellan, Queensland Department of Primary Industries, Ayr.

CARTOGRAPHY by S.F. Crofts and J.K. Myers, Land Resources Branch, Queensland Department of Primary Industries, Brisbane.

BASE MAP compiled from the 1 : 25 000 Topographic Series supplied by the Queensland Department of Mapping and Surveying and reproduced with the permission of the Survey General, Brisbane.

PRINTED at the Government Printing Office, Brisbane. 1987

QUEENSLAND GOVERNMENT 1987



INTENSITY STATEMENT This is a high intensity soil survey. It is based on aerial photograph interpretation and ground observations of the order of one observation to an area of 6 ha.

REFERENCE section containing soil descriptions, soil codes, and soil groups. Includes sections for 'SOILS OF THE LOCAL ALLUVIAL PLAINS AND ASSOCIATED PEDIMENTS', 'SOILS OF THE GENTLY UNDULATING RISES ON AN INTRUSIVE ROCK COMPLEX', 'SOILS OF THE BURDEKIN RIVER ALLUVIAL PLAIN', 'SOILS OF MISCELLANEOUS ALLUVIAL LANDFORMS', 'LEEVES, FLOOD-OUTS AND FANS', 'BACKPLAIN', 'CHANNEL BENCHES', 'CLOSED AND OPEN DEPRESSIONS', 'MISCELLANEOUS UNITS', and 'VARIANTS AND PHASES SUFFIXES'.