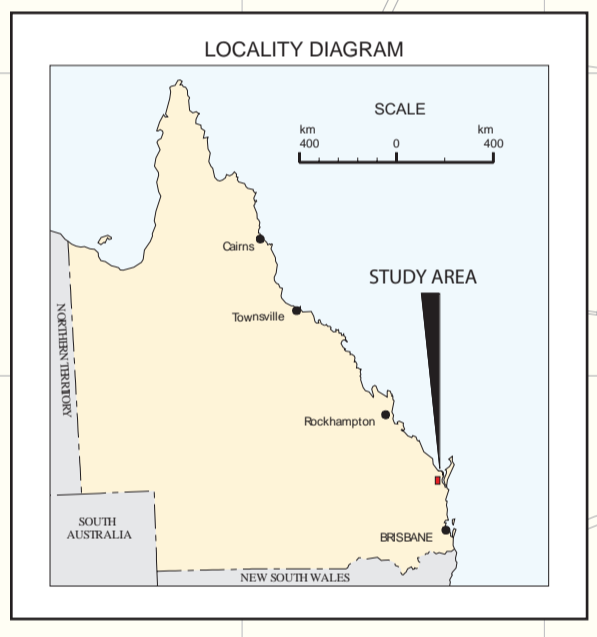
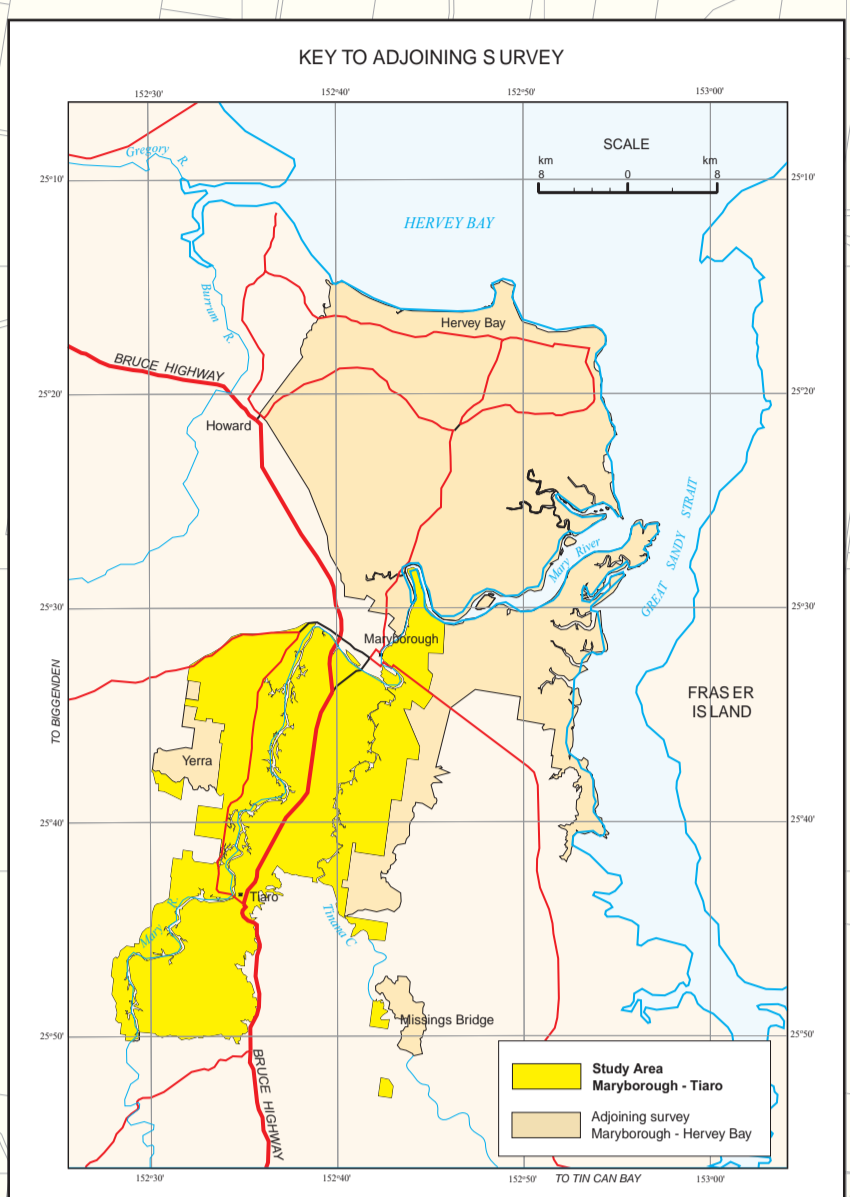


MARYBOROUGH - TIARO
LAND SUITABILITY FOR
FURROW IRRIGATED SWEET CORN

SCALE 1 : 50 000

UNIVERSAL TRANSVERSE MERCATOR PROJECTION
GREY NUMBERED GRID LINES ARE AT 2000 METRE INTERVALS ON THE AUSTRALIAN MAP GRID, ZONE 56 GDHM. GRID VALUES ARE SHOWN IN FULL AT THE SOUTHWEST CORNER OF THE SHEET.



REFERENCE

Land is classified on the basis of a specific land use which allows optimum production with minimal degradation to the land resource in the long term.

- Class 1 - Suitable land with limitations
- Class 2 - Suitable land with minor limitations
- Class 3 - Suitable land with moderate limitations
- Class 4 - Marginal land - presently unsuitable
- Class 5 - Unsuitable land
- Not assessed

INTENSITY STATEMENT

This assessment uses the results of a medium intensity soil survey. It is based on aerial photography interpretation and ground observations of the order of one observation to an area of 50 hectares.

ACCURACY STATEMENT

Due to varying sources of data sets, spatial locations may not coincide when overlaid.

SURVEY by Peter R. Zund and David M. Brown, Resource Management, Department of Natural Resources and Mines.

CARTOGRAPHY by Sheryl F. Crofts, Department of Natural Resources and Mines.

BASE MAP Digital Cadastral Data Base, Department of Natural Resources and Mines, 2000

© The State of Queensland, Department of Natural Resources and Mines, 2001

While every care is taken to ensure the accuracy of this product, the Department of Natural Resources and Mines makes no representation or warranties about its accuracy, reliability, completeness or suitability for any particular purpose and disclaims all responsibility and all liability (including indirect or consequential) for all expenses, losses, damages (including indirect or consequential) and costs which you might incur as a result of the product being inaccurate or incomplete in any way for any reason.

MARYBOROUGH - TIARO
 LAND SUITABILITY FOR FURROW IRRIGATED SUGARCANE
 NIRM Ref No. MFL-A40 3295