

MARYBOROUGH - TIARO

LAND SUITABILITY FOR

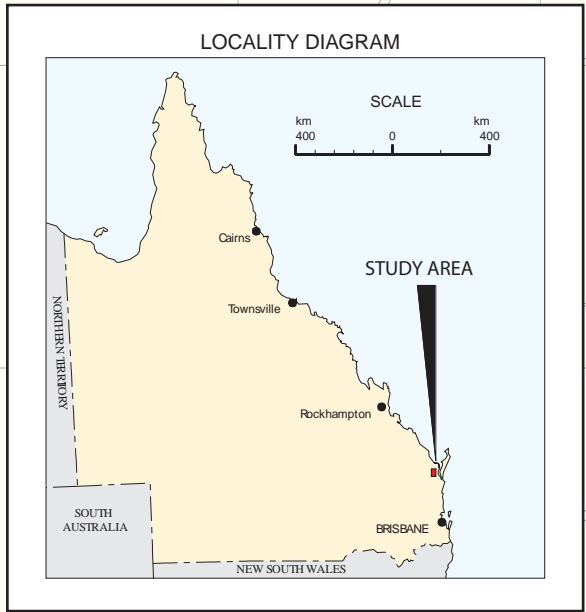
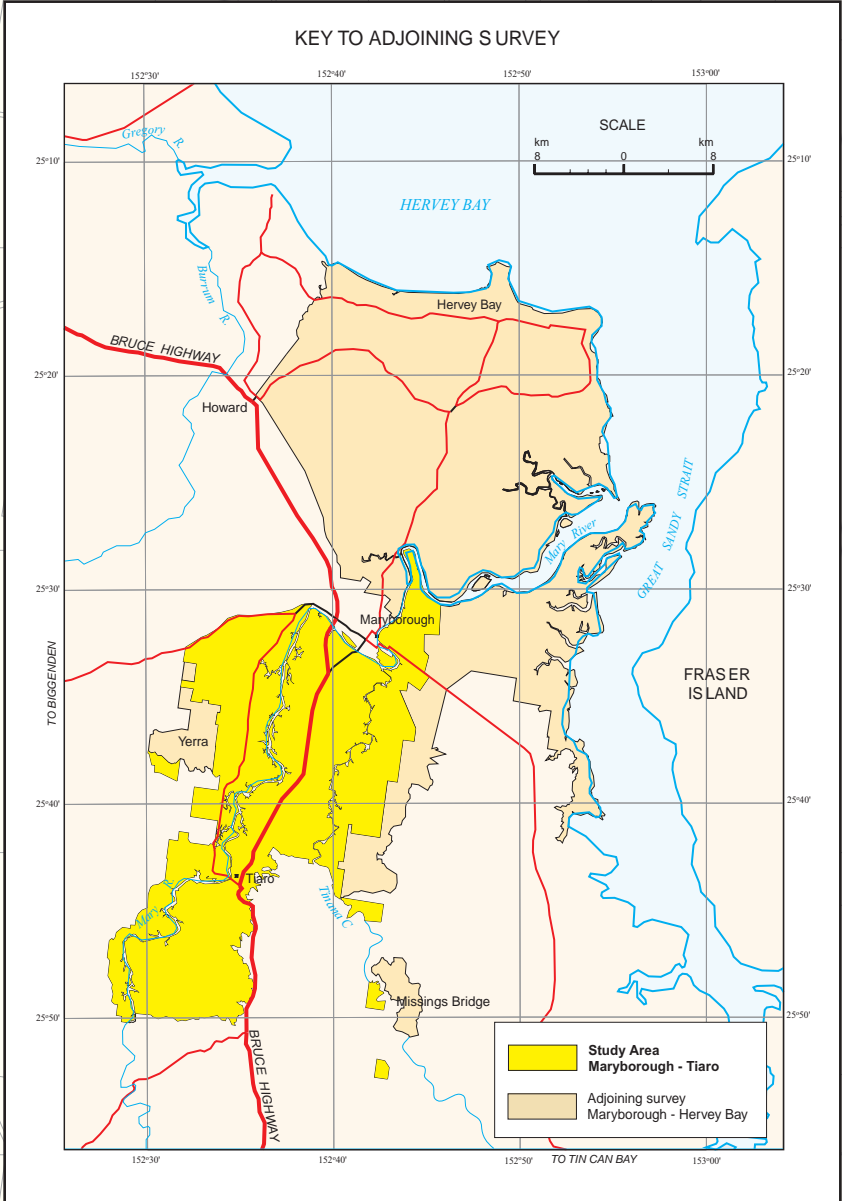
SPRAY IRRIGATED PEANUT

SCALE 1 : 50 000

UNIVERSAL TRANSVERSE MERCATOR PROJECTION

GREY NUMBERED GRID LINES ARE AT 2000 METRE INTERVALS OF THE AUSTRALIAN MAP GRID, ZONE 56 GD44

GRID VALUES ARE SHOWN IN FULL AT THE SOUTHWEST CORNER OF THE SHEET



REFERENCE

Land is classified on the basis of a specific land use which allows optimum production with minimal degradation to the land resource in the long term.

	Class 1 - Suitable land with limitations
	Class 2 - Suitable land with minor limitations
	Class 3 - Suitable land with moderate limitations
	Class 4 - Marginal land - presently unsuitable
	Class 5 - Unsuitable land
	Not assessed

INTENSITY STATEMENT

This assessment uses the results of a medium intensity soil survey. It is based on aerial photography interpretation and ground observations of the order of one observation to an area of 50 hectares.

ACCURACY STATEMENT

Due to varying sources of data sets, spatial locations may not coincide when overlaid.

SURVEY by Peter R. Zund and David M. Brown, Resource Management, Department of Natural Resources and Mines.

CARTOGRAPHY by Sheryl F. Crofts, Department of Natural Resources and Mines.

BASE MAP Digital Cadastral Data Base, Department of Natural Resources and Mines, 2000

© The State of Queensland, Department of Natural Resources and Mines, 2001

DISCLAIMER

While every care is taken to ensure the accuracy of this product, the Department of Natural Resources and Mines makes no representation or warranties about the accuracy, reliability, completeness or suitability for any particular purpose and disclaims all responsibility and all liability (including without limitation, liability in negligence) for all expenses, losses, damages (including indirect or consequential damage) and costs which you might incur as a result of the product being inaccurate or incomplete in any way for and reason.

MARYBOROUGH - TIARO

LAND SUITABILITY FOR SPRAY IRRIGATED SUGARCANE

NR&M Ref No. MTL-140-3315