



## Regional Ecosystem Technical Descriptions

Technical descriptions provide a detailed description of the full range in structure and floristic composition of regional ecosystems (e.g. 9.10.3) and their component vegetation communities (e.g. 9.10.3a, 9.10.3b).

The descriptions are compiled using site survey data from the Queensland Herbarium’s CORVEG database. Distribution maps, representative images (if available) and the pre-clearing and remnant area (hectares) of each vegetation community derived from the regional ecosystem mapping (spatial) data are included. The technical descriptions should be used in conjunction with the fields from the regional ecosystem description database (REDD) for a full description of the regional ecosystem. Quantitative site data from relatively undisturbed sites are extracted from CORVEG and summarized to provide information specific to each vegetation community.

Technical descriptions include the attributes: tree canopy height and cover and native plant species composition of the predominant layer, which are used to assess the remnant status of vegetation under the *Vegetation Management Act 1999*. However, as technical descriptions reflect the full range in structure and floristic composition across the climatic, natural disturbance and geographic range of the regional ecosystem, local reference sites should be used where possible (Neldner *et al.* 2012 section 3.3.1).

The technical descriptions are subject to review and are updated as additional data becomes available.

When conducting a BioCondition assessment, these technical descriptions should be used in conjunction with [BioCondition benchmarks](#) for the specific regional ecosystem, or component vegetation community.

### Field definitions

Description	Description of the species, structural formation and habitat of the vegetation community (this is not the Regulation description)
Area of pre-clearing regional ecosystem	The area of the regional ecosystem vegetation community before clearing in hectares
Area of remnant RE and percentage remaining	The area of the remnant regional ecosystem vegetation community in hectares and as a percentage of pre-clearing extent
Species recorded	Total number; number of woody species; number in the ground layer (some species can be both woody and occur in the ground layer); average number of species per site (using only sites where a completed species list was recorded); standard deviation; number of sites used to calculate the average species number.
Basal area	Site average, range and standard deviation (m <sup>2</sup> /hectare)
Structural Formation	Percentage of sites by structural formation. For example: Woodland: 39%; open-forest: 39%; open-woodland: 22%, 23 site(s)
Representative CORVEG sites	Site (id) numbers used in the description
For each stratum present: <ul style="list-style-type: none"> <li>Emergent (E)</li> <li>Canopy (T1), Sub-canopy (T2) and Low tree layers (T3)</li> <li>Shrub (S1) and Sub-shrub layers (S2)</li> <li>Ground (G)</li> </ul>	<ul style="list-style-type: none"> <li><i>Height</i> - average canopy height in metres, range in metres and number of sites values are based on.</li> <li><i>Cover</i> - Average percentage canopy cover of the layer, range and number of sites values are based on.</li> <li><i>Average stem density</i> (stems per hectare), range and number of sites values are based on.</li> </ul>
Dominant species (relative cover, frequency):	Relative cover (mean of cover of species / total cover of all species in that stratum for all values > zero) and frequency (percent of total sites) ordered by decreasing relative abundance. Up to five most dominant species with frequency > 20% listed for each stratum. For example: <i>Abutilon albescens</i> (78, 46%), means this species occurs in 46% of all sites and when it occurs comprises 78% of total cover (of the stratum)
Frequent species (cover, frequency):	Frequent species: Cover (mean of all values > zero) and frequency (percent of total sites) of all species occurring in more than 5% of sites ordered by decreasing frequency. For example: <i>Abutilon albescens</i> (10, 46%), means this species occurs in 46% of all sites and when it occurs has a mean cover of 10% Ground layer species are listed as either graminoid or forbs. Naturalised species have an asterisk (*) after the scientific name. <i>indet.</i> after listed name = indeterminate species or genus



QUEENSLAND GOVERNMENT

## Department of Science, Information Technology, Innovation and the Arts

### Conditions of use

Technical descriptions have been developed from information published by the State of Queensland (acting through the Department) and remain the property of the State of Queensland. Technical descriptions are not to be included on internet sites other than the Queensland Government website.

Users should reference information contained in the technical descriptions as: Addicott, E.P. and Newton, M. (ed.) (year\*) Technical Descriptions of Regional Ecosystems of the Einasleigh Uplands, (month, year\*) (Queensland Herbarium, Department of Science, Information Technology, Innovation and the Arts: Brisbane). \* Date shown in footnote of individual descriptions.

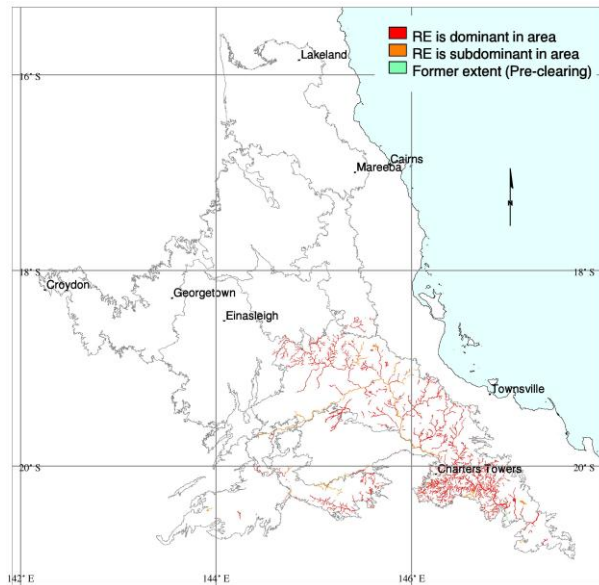
While every effort has been made to ensure the information presented is as reliable as possible, the State of Queensland accepts no liability and gives no assurance in respect of its accuracy and shall not be liable for any loss or damage arising from its use.

Technical descriptions are based on a combination of quantitative and qualitative information and should be used as a guide only. Technical descriptions are not to be used as a substitute for reference sites. Descriptions are subject to review and are updated as additional data becomes available.

### For more information, contact:

Queensland Herbarium, Science Delivery  
Brisbane Botanic Gardens, Mt Coot-tha  
Mt Coot-tha Road  
Toowong Qld 4066  
Australia  
Phone: (07) 3896 9326  
[Queensland.Herbarium@dsitia.qld.gov.au](mailto:Queensland.Herbarium@dsitia.qld.gov.au)

**Eucalyptus camaldulensis and/or E. tereticornis +/- Melaleuca spp. +/- Casuarina cunninghamiana fringing woodland on channels and levees**



C. Kahler

Pre-clearing area (ha), remnant area (ha) and per cent remaining: 92,242 90,574 98%

Species recorded: Total: 142; woody: 45; ground: 107; Avg. spp./site: 26.8; std dev.: 8.2, 4 site(s)

Basal area: Avg./site: 7.5 m<sup>2</sup>/ha, range: 2.0 - 21 m<sup>2</sup>/ha, std. deviation: 6 m<sup>2</sup>/ha, 8 site(s)

Structural formation: Woodland: 56%; open-forest: 33%; open-woodland: 11%, 9 site(s)

Representative sites: 25587, 25752, 26106, 26111, 26382, 26540, 26541, 26692, 26882.

**Stratum: T1**

Height avg. = 21.4m, range 15-28m, 9 sites  
 Crown cover avg. = 43.6%, range 6.1-70.6%, 9 sites  
 Stem density/ha avg. = 115, range 40-220, 4 sites

*Dominant species (relative cover, frequency): Eucalyptus tereticornis (69, 33%), Eucalyptus camaldulensis (62, 56%), Melaleuca fluviatilis (42, 33%), Casuarina cunninghamiana (33, 33%), Corymbia tessellaris (17, 78%)*

*Frequent species (cover, frequency): Corymbia tessellaris (6, 78%), Eucalyptus camaldulensis (23, 56%), Casuarina cunninghamiana (14, 33%), Eucalyptus tereticornis (24, 33%), Melaleuca fluviatilis (25, 33%), Alstonia constricta (11%), Corymbia clarksoniana (6, 11%), Cryptostegia grandiflora\* (11%), Eucalyptus raveretiana (11%), Melaleuca leucadendra (6, 11%)*

**Stratum: T2**

Height avg. = 9.6m, range 5-15m, 8 sites  
 Crown cover avg. = 10.4%, range 0.0-74.6%, 8 sites  
 Stem density/ha avg. = 120, range 60-160, 3 sites

*Dominant species (relative cover, frequency): Pleiogyneum timorense (67, 33%), Ficus opposita (50, 22%)*

*Frequent species (cover, frequency): Pleiogyneum timorense (33%), Ficus opposita (3, 22%), Acacia aulacocarpa (11%), Acacia crassicaarpa (11%), Alstonia constricta (11%), Brachychiton australis (11%), Casuarina cunninghamiana (11%), Celtis paniculata (11%), Corymbia tessellaris (11%), Eucalyptus camaldulensis (4, 11%), Eucalyptus platyphylla (1, 11%), Eucalyptus tereticornis (11%), Ficus racemosa var. racemosa (11%), Ficus rubiginosa (11%), Grevillea parallela (11%), Lophostemon grandiflorus (11%), Lophostemon suaveolens (1, 11%), Melaleuca bracteata (1, 11%), Melaleuca viridiflora (68, 11%), Pandanus cookii (4, 11%), Ricinus communis\* (11%), Syzygium indet. (11%)*

Dominant species: Relative cover (mean of cover of species / total cover of all species in that stratum for all values > zero) and frequency (percent of total sites) ordered by decreasing relative abundance. Up to five most dominant species with frequency > 20% listed for each stratum.

Frequent species: Cover (mean of all values > zero) and frequency (percent of total sites) of all species occurring in more than 5% of sites ordered by decreasing frequency. Ground layer species are listed as either graminoid or forb.

Naturalised species have an asterisk (\*) after the name. indet. after listed name = indeterminate species or genus

**Stratum: S1**

Height avg. = 2.8m, range 1-4m, 8 sites

Crown cover avg. = 7.6%, range 0.0-27.0%, 8 sites

Stem density/ha avg. = 160, range 120-200, 4 sites

*Dominant species (relative cover, frequency):* *Ziziphus mauritiana*\* (75, 22%), *Ficus opposita* (63, 44%), *Lantana camara*\* (49, 22%), *Lysiphyllum hookeri* (22, 22%)

*Frequent species (cover, frequency):* *Ficus opposita* (3, 44%), *Lantana camara*\* (3, 22%), *Lysiphyllum hookeri* (2, 22%), *Ziziphus mauritiana*\* (22%), *Acacia aulacocarpa* (11%), *Acacia crassicaarpa* (11%), *Breynia oblongifolia* (11%), *Corymbia tessellaris* (11%), *Crotalaria pallida* (6, 11%), *Cryptostegia grandiflora*\* (11%), *Geijera salicifolia* (11%), *Melaleuca linariifolia* (11%), *Passiflora foetida*\* (11%), *Petalostigma pubescens* (11%), *Planchonia careya* (11%), *Pleiogynium timorense* (11%), *Psydrax saligna forma saligna* (11%), *Sida cordifolia*\* (11%), *Solanum seaforthianum*\* (11%), *Urena lobata*\* (11%)

**Stratum: S2**

Height avg. = 1.5m, 1 site

Crown cover avg. = 0.0%, 1 site

Stem density/ha avg. = 740, 1 site

*Frequent species (cover, frequency):* *Breynia oblongifolia* (11%), *Crotalaria goreensis*\* (11%), *Crotalaria pallida* (11%), *Ficus opposita* (11%), *Hyptis suaveolens*\* (11%), *Lantana camara*\* (6, 11%), *Petalostigma pubescens* (11%), *Pleiogynium timorense* (11%), *Psydrax saligna forma saligna* (11%), *Sida acuta*\* (11%), *Sida cordifolia*\* (11%), *Sida hackettiana* (11%), *Urena lobata*\* (11%)

**Stratum: G**

Height avg. = 0.8m, range 0.5-1m, 4 sites

PFC avg. = 37.8%, range 0-80%, 4 sites

*Dominant species (relative cover, frequency):* *Heteropogon contortus* (15, 22%), *Cynodon dactylon var. dactylon*\* (13, 33%), *Argemone ochroleuca subsp. ochroleuca*\* (6, 22%), *Ageratum houstonianum*\* (5, 22%), *Melinis repens*\* (2, 22%)

*Frequent species (cover, frequency):* **GRAMINOIDS:** *Cynodon dactylon var. dactylon*\* (7, 33%), *Bothriochloa decipiens var. cloncurrans* (22%), *Heteropogon contortus* (10, 22%), *Melinis repens*\* (22%), *Aristida holathera var. holathera* (11%), *Aristida inaequiglumis* (11%), *Arundinella nepalensis* (1, 11%), *Capillipedium indet.* (11%), *Chloris divaricata* (11%), *Cyperus conicus var. conicus* (11%), *Cyperus difformis* (11%), *Cyperus gracilis* (11%), *Cyperus javanicus* (11%), *Dichanthium sericeum* (15, 11%), *Dichanthium tenue* (11%), *Digitaria ciliaris*\* (12, 11%), *Echinochloa indet.* (11%), *Eragrostis lacunaria* (11%), *Eragrostis schultzei* (11%), *Fuirena umbellata* (4, 11%), *Imperata cylindrica* (39, 11%), *Ischaemum australe* (43, 11%), *Panicum effusum var. effusum* (11%), *Panicum robustum* (11%), *Paspalidium constrictum* (11%), *Paspalum indet.* (11%), *Paspalum scrobiculatum* (11%), *Sacciolepis indica* (4, 11%), *Setaria indet.* (11%), *Sporobolus australasicus* (11%), *Sporobolus indet.* (11%), *Themeda triandra* (3, 11%)

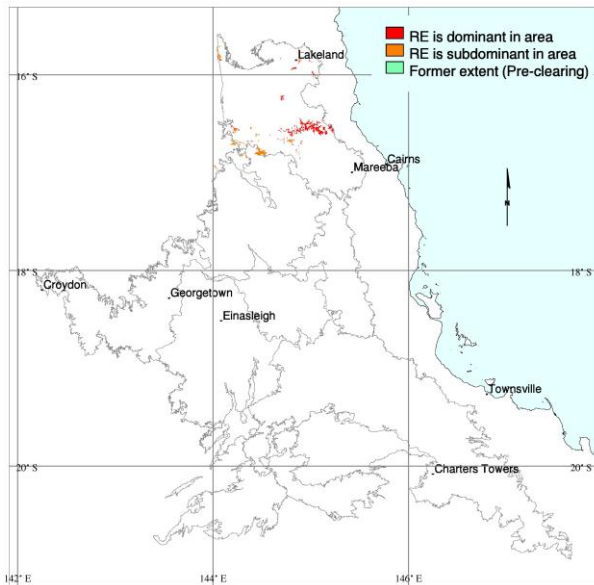
**FORBS:** *Ageratum houstonianum*\* (3, 22%), *Argemone ochroleuca subsp. ochroleuca*\* (22%), *Grewia retusifolia* (22%), *Abutilon oxycarpum* (11%), *Achyranthes aspera* (11%), *Acmella grandiflora var. brachyglossa* (11%), *Ammannia multiflora* (11%), *Bidens pilosa*\* (11%), *Centaurium erythraea*\* (11%), *Centella asiatica* (11%), *Chamaesyce indet.* (11%), *Clerodendrum floribundum* (11%), *Crotalaria incana*\* (11%), *Cucumis myriocarpus subsp. myriocarpus*\* (11%), *Desmodium heterocarpon* (11%), *Desmodium indet.* (11%), *Galactia indet.* (11%), *Glinus lotoides* (11%), *Gnaphalium indet.* (11%), *Haloragis heterophylla* (11%), *Heliotropium ovalifolium* (11%), *Hybanthus indet.* (11%), *Hydrocotyle tripartita* (11%), *Hypericum gramineum* (11%), *Ipomoea indet.* (11%), *Lobelia membranacea* (11%), *Lomandra longifolia* (11%), *Ocimum basilicum*\* (11%), *Persicaria indet.* (11%), *Philydrum lanuginosum* (4, 11%), *Pterocaulon redolens* (11%), *Rhynchosia minima* (11%), *Richardia indet.* (11%), *Ricinus communis*\* (11%), *Sida cordifolia*\* (11%), *Sida rhombifolia*\* (11%), *Sigesbeckia orientalis* (11%), *Sonchus indet.* (11%), *Tridax procumbens*\* (11%), *Waltheria indica* (11%)

Dominant species: Relative cover (mean of cover of species / total cover of all species in that stratum for all values > zero) and frequency (percent of total sites) ordered by decreasing relative abundance. Up to five most dominant species with frequency > 20% listed for each stratum.

Frequent species: Cover (mean of all values > zero) and frequency (percent of total sites) of all species occurring in more than 5% of sites ordered by decreasing frequency. Ground layer species are listed as either graminoid or forb.

Naturalised species have an asterisk (\*) after the name. indet. after listed name = indeterminate species or genus

**Eucalyptus leptophleba and/or E. chlorophylla +/- Corymbia dallachiana woodland on river levees and terraces**



J.E. Kemp

Pre-clearing area (ha), remnant area (ha) and per cent remaining: 17,204 16,309 95%

Species recorded: Total: 300; woody: 60; ground: 257; Avg. spp./site: 44.8; std dev.: 17.6, 17 site(s)

Basal area: Avg./site: 7.3 m<sup>2</sup>/ha, range: 3.5 - 11 m<sup>2</sup>/ha, std. deviation: 2 m<sup>2</sup>/ha, 16 site(s)

Structural formation: Woodland: 71%; open-woodland: 29%, 17 site(s)

Representative sites: 25742, 26808, 26954, 26974, 27018, 27019, 27058, 27059, 27075, 27077, 27078, 27079, 27080, 27087, 27088, 27125, 39045.

**Stratum: T1**

Height avg. = 16.2m, range 11-22m, 17 sites

Crown cover avg. = 23.1%, range 7.9-44.4%, 17 sites

Stem density/ha avg. = 89, range 20-160, 17 sites

*Dominant species (relative cover, frequency): Eucalyptus chlorophylla (82, 29%), Eucalyptus leptophleba (62, 88%), Corymbia clarksoniana (34, 24%), Corymbia dallachiana (19, 41%), Eucalyptus cullenii (1, 24%)*

*Frequent species (cover, frequency): Eucalyptus leptophleba (16, 88%), Corymbia dallachiana (4, 41%), Eucalyptus chlorophylla (16, 29%), Corymbia clarksoniana (6, 24%), Cryptostegia grandiflora\* (24%), Eucalyptus cullenii (24%), Grevillea striata (18%), Corymbia confertiflora (3, 12%), Eucalyptus platyphylla (1, 12%), Acacia indet. (6%), Erythrophleum chlorostachys (3, 6%), Hakea persiehana (6%), Melaleuca citrolens (1, 6%), Terminalia aridicola (1, 6%), Terminalia platyptera (4, 6%)*

Dominant species: Relative cover (mean of cover of species / total cover of all species in that stratum for all values > zero) and frequency (percent of total sites) ordered by decreasing relative abundance. Up to five most dominant species with frequency > 20% listed for each stratum.

Frequent species: Cover (mean of all values > zero) and frequency (percent of total sites) of all species occurring in more than 5% of sites ordered by decreasing frequency. Ground layer species are listed as either graminoid or forb.

Naturalised species have an asterisk (\*) after the name. indet. after listed name = indeterminate species or genus

**Stratum: T2**

Height avg. = 7.2m, range 4-11m, 16 sites

Crown cover avg. = 3.9%, range 0.0-13.8%, 16 sites

Stem density/ha avg. = 207, range 20-640, 14 sites

*Dominant species (relative cover, frequency): Eucalyptus chlorophylla (51, 29%), Melaleuca viridiflora (47, 29%), Melaleuca nervosa (34, 24%), Eucalyptus leptophleba (24, 41%), Melaleuca citrolens (13, 24%)*

*Frequent species (cover, frequency): Eragrostiella indet. (6%), Panicum indet. (6%), Eucalyptus leptophleba (2, 41%), Grevillea striata (1, 35%), Cryptostegia grandiflora\* (29%), Eucalyptus chlorophylla (3, 29%), Melaleuca viridiflora (1, 29%), Melaleuca citrolens (24%), Melaleuca nervosa (1, 24%), Melaleuca stenostachya (24%), Corymbia clarksoniana (18%), Eucalyptus cullenii (18%), Terminalia platyptera (1, 18%), Hakea persiehana (12%), Acacia disparrima (1, 6%), Acacia victoriae (6%), Corymbia dallachiana (6%), Erythrophleum chlorostachys (6%), Eucalyptus platyphylla (6%), Grevillea glauca (6%), Grevillea mimosoides (6%), Grevillea parallela (4, 6%), Lophostemon grandiflorus (6%), Pandanus indet. (6%), Petalostigma banksii (6%), Petalostigma pubescens (6%), Santalum lanceolatum (6%), Terminalia indet. (1, 6%)*

**Stratum: S1**

Height avg. = 1.5m, range 0.5-3m, 16 sites

Crown cover avg. = 0.4%, range 0.0-1.6%, 16 sites

Stem density/ha avg. = 280, range 20-1500, 12 sites

*Dominant species (relative cover, frequency): Planchonia careya (26, 24%), Melaleuca viridiflora (23, 24%), Gardenia vilhelmii (22, 24%), Terminalia platyptera (21, 24%), Carissa lanceolata (21, 53%)*

*Frequent species (cover, frequency): Carissa lanceolata (53%), Eucalyptus leptophleba (47%), Cryptostegia grandiflora\* (35%), Dolichandrone heterophylla (29%), Melaleuca citrolens (1, 29%), Gardenia vilhelmii (24%), Maytenus cunninghamii (24%), Melaleuca viridiflora (24%), Petalostigma pubescens (24%), Planchonia careya (24%), Terminalia platyptera (24%), Atalaya sericopetala (18%), Ehretia membranifolia (18%), Melaleuca stenostachya (18%), Capparis indet. (12%), Capparis lasiantha (12%), Corymbia clarksoniana (12%), Corymbia dallachiana (12%), Erythrophleum chlorostachys (12%), Flueggea virosa subsp. melanthesoides (12%), Grewia retusifolia (12%), Hakea persiehana (12%), Petalostigma banksii (12%), Xylomelum indet. (12%), Acacia indet. (6%), Acacia leptocarpa (6%), Acacia polystachya (6%), Acacia victoriae (6%), Angiosperm indet. (6%), Antidesma ghaesembilla (6%), Breynia indet. (6%), Cayratia trifolia (6%), Clerodendrum floribundum (6%), Clerodendrum longiflorum var. glabrum (6%), Corymbia confertiflora (6%), Diospyros humilis (6%), Erythrina indet. (6%), Eucalyptus cullenii (6%), Ficus opposita (6%), Grevillea mimosoides (6%), Grevillea striata (6%), Hibiscus meraukensis (6%), Lophostemon grandiflorus (6%), Melaleuca nervosa (6%), Mimosaceae indet. (6%), Myoporum indet. (6%), Owenia acidula (6%), Owenia indet. (1, 6%), Pogonolobus reticulatus (6%), Santalum lanceolatum (6%), Terminalia aridicola (6%), Terminalia indet. (6%)*

Dominant species: Relative cover (mean of cover of species / total cover of all species in that stratum for all values > zero) and frequency (percent of total sites) ordered by decreasing relative abundance. Up to five most dominant species with frequency > 20% listed for each stratum.

Frequent species: Cover (mean of all values > zero) and frequency (percent of total sites) of all species occurring in more than 5% of sites ordered by decreasing frequency. Ground layer species are listed as either graminoid or forb.

Naturalised species have an asterisk (\*) after the name. indet. after listed name = indeterminate species or genus



**Stratum: G**

Height avg. = 0.6m, range 0.3-1m, 17 sites

PFC avg. = 55.4%, range 19-96%, 17 sites

*Dominant species (relative cover, frequency):* *Aristida biglandulosa* (29, 41%), *Aristida indet.* (25, 24%), *Heteropogon contortus* (16, 100%), *Panicum indet.* (10, 29%), *Themeda arguens* (10, 29%)

*Frequent species (cover, frequency):* GRAMINOIDS: *Heteropogon contortus* (11, 100%), *Themeda triandra* (4, 65%), *Chrysopogon fallax* (4, 47%), *Schizachyrium fragile* (2, 47%), *Themeda quadrivalvis\** (3, 47%), *Alloteropsis cimicina* (1, 41%), *Aristida biglandulosa* (15, 41%), *Bothriochloa decipiens* var. *cloncurrans* (4, 41%), *Arundinella setosa* (4, 35%), *Eragrostis spartinoidea* (2, 35%), *Sarga plumosum* (2, 35%), *Aristida perniciososa* (3, 29%), *Eragrostis indet.* (2, 29%), *Fimbristylis dichotoma* (1, 29%), *Panicum indet.* (5, 29%), *Paspalidium distans* (2, 29%), *Themeda arguens* (2, 29%), *Aristida indet.* (15, 24%), *Enneapogon lindleyanus* (24%), *Heteropogon triticeus* (2, 24%), *Melinis repens\** (24%), *Sporobolus caroli* (1, 24%), *Aristida holathera* var. *holathera* (1, 18%), *Chloris pectinata* (18%), *Cyperus indet.* (4, 18%), *Eragrostis tenellula* (18%), *Mnesithea formosa* (18%), *Panicum effusum* (18%), *Panicum seminudum* var. *cairnsianum* (18%), *Alloteropsis semialata* (1, 12%), *Aristida pruinosa* (3, 12%), *Aristida superpendens* (2, 12%), *Bothriochloa bladhii* (20, 12%), *Bothriochloa indet.* (14, 12%), *Capillipedium parviflorum* (12%), *Cyperaceae indet.* (1, 12%), *Dichanthium sericeum* (12%), *Eragrostis cumingii* (1, 12%), *Mnesithea rottboelliioides* (12%), *Panicum larcomianum* (1, 12%), *Poaceae indet.* (1, 12%), *Pseudopogonatherum contortum* (12%), *Schizachyrium indet.* (1, 12%), *Aristida calycina* (10, 6%), *Aristida latifolia* (6%), *Arundinella nepalensis* (6%), *Bothriochloa decipiens* (1, 6%), *Bothriochloa ewartiana* (6%), *Capillipedium indet.* (6%), *Chloris indet.* (6%), *Chloris inflata\** (6%), *Chrysopogon indet.* (4, 6%), *Cyperus aquatilis* (6%), *Cyperus concinnus* (6%), *Cyperus haspan* (6%), *Dactyloctenium radulans* (6%), *Digitaria indet.* (6%), *Digitaria nematostachya* (6%), *Eleocharis atropurpurea* (6%), *Eleocharis philippinensis* (6%), *Elytrophorus spicatus* (6%), *Enneapogon indet.* (6%), *Eragrostis fallax* (6%), *Eragrostis leptostachya* (1, 6%), *Eriachne ciliata* (4, 6%), *Eriachne indet.* (6%), *Eriachne mucronata* (6%), *Eulalia annua* (2, 6%), *Eulalia indet.* (6%), *Fimbristylis depauperata* (8, 6%), *Fimbristylis indet.* (1, 6%), *Fimbristylis littoralis* (6%), *Fimbristylis microcarya* (3, 6%), *Fuirena ciliaris* (6%), *Imperata cylindrica* (6%), *Ischaemum rugosum* (7, 6%), *Mnesithea granularis* (6%), *Oxychloris indet.* (6%), *Panicum decompositum* (4, 6%), *Panicum decompositum* var. *tenuius* (6%), *Paspalum indet.* (6%), *Perotis rara* (6%), *Pseudopogonatherum irritans* (1, 6%), *Rhynchospora indet.* (6%), *Schizachyrium pachyarthron* (6%), *Scleria brownii* (6%), *Scleria novae-hollandiae* (6%), *Setaria apiculata* (6%), *Setaria surgens* (6%), *Sporobolus jacquemontii\** (6%), *Thaumastochloa indet.* (1, 6%), *Thaumastochloa rariflora* (6%), *Urochloa subquadripara\** (1, 6%)  
 FORBS: *Grewia retusifolia* (1, 94%), *Rostellularia adscendens* (1, 65%), *Evolvulus alsinoides* (1, 53%), *Galactia tenuiflora* (1, 47%), *Indigofera linnaei* (2, 47%), *Stylosanthes scabra\** (1, 47%), *Sida spinosa\** (41%), *Corchorus aestuans* (35%), *Wedelia spilanthisoides* (35%), *Chamaesyce hirta\** (29%), *Chamaesyce vachellii* (29%), *Cyanthillium cinereum* (29%), *Emilia sonchifolia\** (29%), *Melhania oblongifolia* (29%), *Neptunia indet.* (29%), *Sida hackettiana* (29%), *Spermacoce latifolia\** (1, 29%), *Zornia muriculata* subsp. *angustata* (29%), *Atalaya sericopetala* (24%), *Blumea saxatilis* (24%), *Brunoniella acaulis* (1, 24%), *Cayratia trifolia* (24%), *Chamaecrista nomame* (1, 24%), *Crotalaria medicaginea* (24%), *Flemingia parviflora* (1, 24%), *Ocimum americanum* var. *americanum\** (24%), *Phyllanthus virgatus* (24%), *Rhynchosia minima* var. *minima* (24%), *Sida indet.* (24%), *Spermacoce indet.* (1, 24%), *Stylosanthes humilis\** (1, 24%), *Alternanthera micrantha* (18%), *Angiosperm indet.* (18%), *Asteraceae indet.* (18%), *Cayratia indet.* (18%), *Crotalaria montana* (18%), *Cucumis anguria* var. *anguria\** (18%), *Flueggea virosa* subsp. *melanthesoides* (18%), *Glycine indet.* (2, 18%), *Glycine tomentella* (18%), *Indigofera indet.* (18%), *Malvaceae indet.* (1, 18%), *Ptilotus macrocephalus* (18%), *Spermacoce brachystema* (18%), *Stylosanthes indet.* (2, 18%), *Tephrosia leptoclada* (18%), *Zornia muriculata* (18%), *Alternanthera nana* (12%), *Aristolochia holtzei* (12%), *Campylocarpha barbata* (12%), *Chamaecrista absus* var. *absus* (12%), *Chamaesyce indet.* (12%), *Cheilanthes indet.* (12%), *Convolvulaceae indet.* (12%), *Crotalaria calycina* (1, 12%), *Epaltes australis* (12%), *Euphorbia indet.* (12%), *Ficus opposita* (12%), *Goodenia pilosa* (12%), *Hibiscus meraukensis* (12%), *Hybanthus enneaspermus* (12%), *Hyptis suaveolens\** (12%), *Indigofera colutea* (12%), *Ipomoea eriocarpa* (12%), *Ipomoea polymorpha* (12%), *Ludwigia octovalvis* (12%), *Malvastrum americanum\** (12%), *Marsdenia indet.* (12%), *Melaleuca citrolens* (1, 12%), *Melaleuca viridiflora* (12%), *Oldenlandia mitrasacmoides* subsp. *mitrasacmoides* (12%), *Passiflora foetida\** (12%), *Planchonia careya* (12%), *Polygala longifolia* (12%), *Stachytarpheta jamaicensis\** (1, 12%), *Uraria lagopodioides* (12%), *Vigna vexillata* (12%), *Wedelia indet.* (12%), *Abelmoschus indet.* (6%), *Acacia sutherlandii* (6%), *Acanthospermum hispidum\** (6%), *Acmella grandiflora* (6%), *Acmella grandiflora* var. *brachyglossa* (6%), *Aeschynomene indica* (6%), *Albizia indet.* (6%), *Alysicarpus aurantiacus* (1, 6%), *Alysicarpus ovalifolius\** (6%), *Alysicarpus schomburgkii* (6%), *Alysicarpus vaginalis\** (6%), *Bacopa floribunda* (6%), *Boerhavia indet.* (6%), *Bonamia media* (6%), *Brachychiton diversifolius* subsp. *orientalis* (6%), *Breynia oblongifolia* (6%), *Brunoniella acaulis* subsp. *acaulis* (6%), *Brunoniella indet.* (6%), *Buchnera linearis* (6%), *Cajanus indet.* (6%), *Calandrinia indet.* (6%), *Callicarpa candicans* (6%), *Carissa lanceolata* (1, 6%), *Chamaecrista absus* (6%), *Cheilanthes nudiuscula* (6%), *Convolvulus indet.* (6%), *Crotalaria brevis* (6%), *Cryptostegia grandiflora\** (6%), *Desmodium gangeticum* (6%), *Desmodium heterophyllum\** (6%), *Desmodium indet.* (6%), *Desmodium pullenii* (1, 6%), *Eriocaulon cinereum* (6%), *Eucalyptus leptophleba* (6%), *Flemingia indet.* (6%), *Glycine curvata* (6%), *Goodenia armitiana* (6%), *Goodenia indet.* (6%), *Grewia indet.* (6%), *Haemodorum coccineum* (6%), *Heliotropium indet.* (1, 6%), *Hybanthus indet.* (6%), *Indigofera pratensis* (1, 6%), *Iphigenia indica* (6%), *Ipomoea coptica* (6%), *Ipomoea gracilis* (6%), *Jacquemontia indet.* (1, 6%), *Liliaceae indet.* (6%), *Lindernia tenuifolia* (6%), *Ludwigia perennis* (6%), *Macroptilium lathyroides\** (6%), *Marsilea indet.* (6%), *Melaleuca nervosa* (6%), *Melaleuca stenostachya* (6%), *Microcarpaea minima* (6%), *Microstachys chamaelea* (6%), *Mimosa pudica\** (6%), *Mitrasacme nudicaulis* var. *nudicaulis* (6%), *Phyllanthus fuernrohrii*

Dominant species: Relative cover (mean of cover of species / total cover of all species in that stratum for all values > zero) and frequency (percent of total sites) ordered by decreasing relative abundance. Up to five most dominant species with frequency > 20% listed for each stratum.

Frequent species: Cover (mean of all values > zero) and frequency (percent of total sites) of all species occurring in more than 5% of sites ordered by decreasing frequency. Ground layer species are listed as either graminoid or forb.

Naturalised species have an asterisk (\*) after the name. indet. after listed name = indeterminate species or genus

## Technical Description

## Regional ecosystem: 9.3.2

(6%), *Phyllanthus indet.* (6%), *Phyllanthus similis* (1, 6%), *Polycarpaea corymbosa* (6%), *Polycarpaea spirostylis* subsp. *spirostylis* (6%), *Polygala indet.* (6%), *Portulaca bicolor* (6%), *Pterocaulon sphacelatum* (6%), *Pycnospora lutescens* (1, 6%), *Rhynchosia indet.* (2, 6%), *Rotala mexicana* (6%), *Sauropus indet.* (1, 6%), *Sida rhombifolia*\* (6%), *Sida rohlenae* (6%), *Solanum indet.* (6%), *Stylosanthes hamata*\* (6%), *Tacca leontopetaloides* (6%), *Tephrosia brachyodon* (6%), *Tephrosia filipes* (6%), *Tephrosia indet.* (6%), *Tephrosia juncea* (6%), *Terminalia platyptera* (2, 6%), *Thecanthes cornucopiae* (6%), *Uraria indet.* (6%), *Vigna radiata* var. *sublobata* (6%), *Vigna vexillata* var. *youngiana* (6%), *Wahlenbergia caryophylloides* (6%), *Zornia areolata* (6%)

---

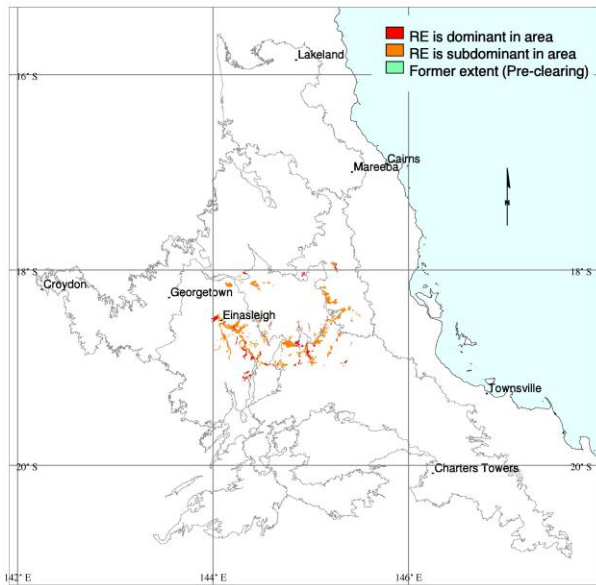
Dominant species: Relative cover (mean of cover of species / total cover of all species in that stratum for all values > zero) and frequency (percent of total sites) ordered by decreasing relative abundance. Up to five most dominant species with frequency > 20% listed for each stratum.

Frequent species: Cover (mean of all values > zero) and frequency (percent of total sites) of all species occurring in more than 5% of sites ordered by decreasing frequency. Ground layer species are listed as either graminoid or forb.

Naturalised species have an asterisk (\*) after the name. indet. after listed name = indeterminate species or genus



**Eucalyptus leptophleba +/- E. platyphylla woodland on alluvial plains and terraces**



M. Newton

Pre-clearing area (ha), remnant area (ha) and per cent remaining: 34,008 33,392 98%

Species recorded: Total: 137; woody: 23; ground: 120; Avg. spp./site: 26.0; std dev.: 7.3, 6 site(s)

Basal area: Avg./site: 4.4 m<sup>2</sup>/ha, range: 2.0 - 7 m<sup>2</sup>/ha, std. deviation: 2 m<sup>2</sup>/ha, 8 site(s)

Structural formation: Open-woodland: 50%; woodland: 25%; open-forest: 13%; low open-woodland: 13%, 8 site(s)

Representative sites: 26119, 26690, 26880, 37333, 37334, 37336, 37908, 37924.

**Stratum: T1**

Height avg. = 16.4m, range 8-28m, 8 sites

Crown cover avg. = 20.4%, range 2.9-48.5%, 8 sites

Stem density/ha avg. = 100, range 40-200, 7 sites

*Dominant species (relative cover, frequency): Eucalyptus leptophleba (79, 100%), Eucalyptus platyphylla (44, 25%), Corymbia confertiflora (31, 25%), Corymbia dallachiana (3, 25%)*

*Frequent species (cover, frequency): Eucalyptus leptophleba (16, 100%), Corymbia confertiflora (5, 25%), Corymbia dallachiana (1, 25%), Corymbia tessellaris (25%), Eucalyptus crebra (25%), Eucalyptus platyphylla (19, 25%), Acacia disparrima (13%), Atalaya hemiglauca (1, 13%), Corymbia clarksoniana (13%), Cymbidium canaliculatum (13%), Eucalyptus microneura (13%), Eucalyptus moluccana (13%), Eucalyptus tereticornis (13%), Grevillea striata (13%)*

**Stratum: T2**

Height avg. = 8.8m, range 6-12m, 4 sites

Crown cover avg. = 9.3%, range 1.6-15.9%, 4 sites

Stem density/ha avg. = 220, range 80-320, 3 sites

*Dominant species (relative cover, frequency): Eucalyptus leptophleba (56, 50%)*

*Frequent species (cover, frequency): Eucalyptus leptophleba (6, 50%), Corymbia clarksoniana (6, 13%), Eucalyptus crebra (6, 13%), Eucalyptus moluccana (12, 13%), Eucalyptus platyphylla (6, 13%), Lophostemon suaveolens (13%)*

Dominant species: Relative cover (mean of cover of species / total cover of all species in that stratum for all values > zero) and frequency (percent of total sites) ordered by decreasing relative abundance. Up to five most dominant species with frequency > 20% listed for each stratum.

Frequent species: Cover (mean of all values > zero) and frequency (percent of total sites) of all species occurring in more than 5% of sites ordered by decreasing frequency. Ground layer species are listed as either graminoid or forb.

Naturalised species have an asterisk (\*) after the name. indet. after listed name = indeterminate species or genus

**Stratum: S1**

Height avg. = 1.9m, range 1-3m, 7 sites

Crown cover avg. = 0.6%, range 0.0-1.6%, 7 sites

Stem density/ha avg. = 156, range 80-340, 5 sites

*Dominant species (relative cover, frequency):* *Atalaya hemiglauca* (65, 25%), *Archidendropsis basaltica* (38, 25%), *Eucalyptus leptophleba* (33, 38%), *Carissa lanceolata* (23, 50%)

*Frequent species (cover, frequency):* *Carissa lanceolata* (50%), *Eucalyptus leptophleba* (38%), *Archidendropsis basaltica* (25%), *Atalaya hemiglauca* (1, 25%), *Acacia bidwillii* (13%), *Acacia farnesiana\** (13%), *Acacia victoriae* (2, 13%), *Corymbia clarksoniana* (13%), *Corymbia confertiflora* (13%), *Ficus opposita* (13%), *Grewia retusifolia* (13%), *Maytenus cunninghamii* (13%)

**Stratum: G**

Height avg. = 0.5m, range 0.3-0.9m, 6 sites

PFC avg. = 70.8%, range 19-100%, 6 sites

*Dominant species (relative cover, frequency):* *Bothriochloa pertusa\** (49, 50%), *Heteropogon contortus* (40, 38%), *Themeda triandra* (9, 25%), *Mnesithea rottboellioides* (8, 25%), *Sporobolus jacquemontii\** (8, 25%)

*Frequent species (cover, frequency):* **GRAMINOIDS:** *Fimbristylis dichotoma* (1, 63%), *Bothriochloa pertusa\** (45, 50%), *Bothriochloa decipiens* var. *cloncurrans* (2, 38%), *Heteropogon contortus* (35, 38%), *Chrysopogon fallax* (1, 25%), *Melinis repens\** (1, 25%), *Mnesithea rottboellioides* (8, 25%), *Setaria pumila* subsp. *pallidifusca\** (25%), *Sporobolus jacquemontii\** (2, 25%), *Themeda triandra* (3, 25%), *Arundinella nepalensis* (13%), *Bothriochloa bladhii* (6, 13%), *Bothriochloa decipiens* (34, 13%), *Chloris divaricata* var. *divaricata* (13%), *Chloris inflata\** (13%), *Chloris lobata* (10, 13%), *Cyperus concinnus* (13%), *Cyperus difformis* (13%), *Cyperus iria* (13%), *Dichanthium fecundum* (2, 13%), *Eragrostis brownii* (3, 13%), *Eragrostis cumingii* (13%), *Eragrostis indet.* (13%), *Eragrostis interrupta* (13%), *Eragrostis schultzei* (13%), *Eragrostis spartinooides* (6, 13%), *Eriochloa procera* (13%), *Fimbristylis microcarya* (13%), *Panicum decompositum* var. *tenuius* (13%), *Panicum effusum* (13%), *Sarga plumosum* (13%), *Sporobolus fertilis\** (5, 13%), *Themeda quadrivalvis\** (13%)

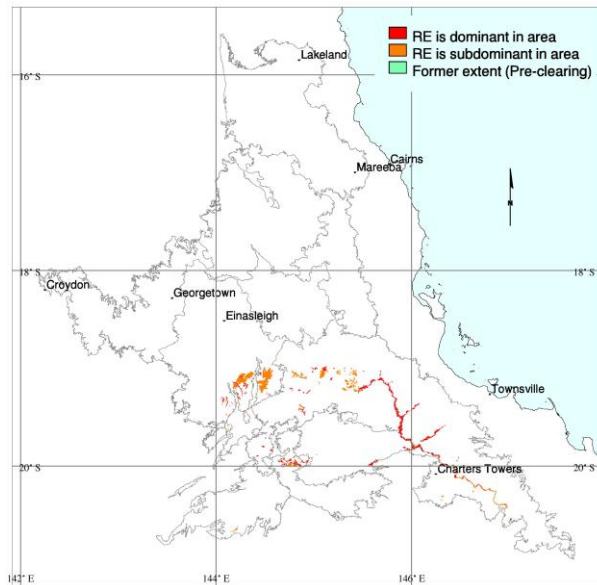
**FORBS:** *Chamaesyce hirta\** (50%), *Brunoniella acaulis* (38%), *Brunoniella australis* (38%), *Sida hackettiana* (38%), *Ageratum conyzoides* (1, 25%), *Alternanthera nana* (25%), *Ammannia multiflora* (25%), *Conyza indet.* (25%), *Cyanthillium cinereum* (25%), *Epaltes australis* (25%), *Flemingia parviflora* (1, 25%), *Glycine tabacina* (25%), *Gomphrena celosioides\** (25%), *Grewia retusifolia* (3, 25%), *Lobelia quadrangularis* (25%), *Mecardonia procumbens\** (25%), *Ocimum basilicum\** (1, 25%), *Phyllanthus virgatus* (25%), *Praxelis clematidea\** (2, 25%), *Sida spinosa\** (25%), *Uraria lagopodioides* (1, 25%), *Wedelia spilanthis* (1, 25%), *Acanthospermum hispidum\** (13%), *Acmella indet.* (13%), *Alternanthera micrantha* (13%), *Alysicarpus ovalifolius\** (1, 13%), *Blumea saxatilis* (13%), *Camptacra barbata* (13%), *Carissa lanceolata* (13%), *Centipeda minima* (13%), *Crotalaria incana\** (13%), *Desmodium gangeticum* (13%), *Dianella rara* (13%), *Emilia sonchifolia\** (13%), *Ficus opposita* (13%), *Galactia tenuiflora* (2, 13%), *Glycine clandestina* (1, 13%), *Glycine tomentella* (13%), *Indigofera linnaei* (1, 13%), *Indigofera polygaloides* (13%), *Lomandra longifolia* (13%), *Maytenus cunninghamii* (13%), *Melochia pyramidata\** (13%), *Neptunia indet.* (1, 13%), *Phyllanthus simplex* (13%), *Pratia concolor* (13%), *Pterocaulon redolens* (1, 13%), *Rhynchosia minima* (13%), *Sida acuta\** (13%), *Sida cordifolia\** (2, 13%), *Spermacoce latifolia\** (13%), *Stylosanthes humilis\** (13%), *Stylosanthes scabra\** (6, 13%), *Trichodesma zeylanicum* (13%), *Urena lobata\** (13%), *Vigna lanceolata* (13%)

Dominant species: Relative cover (mean of cover of species / total cover of all species in that stratum for all values > zero) and frequency (percent of total sites) ordered by decreasing relative abundance. Up to five most dominant species with frequency > 20% listed for each stratum.

Frequent species: Cover (mean of all values > zero) and frequency (percent of total sites) of all species occurring in more than 5% of sites ordered by decreasing frequency. Ground layer species are listed as either graminoid or forb.

Naturalised species have an asterisk (\*) after the name. indet. after listed name = indeterminate species or genus

**Corymbia tessellaris, Eucalyptus crebra, E. platyphylla and E. tereticornis mixed woodland on alluvial plains and terraces**



C. Kahler

Pre-clearing area (ha), remnant area (ha) and per cent remaining: 45,710 41,718 91%

Species recorded: Total: 82; woody: 22; ground: 63; Avg. spp./site: 19.4; std dev.: 12.5, 5 site(s)

Basal area: Avg./site: 6.7 m<sup>2</sup>/ha, range: 3.0 - 14 m<sup>2</sup>/ha, std. deviation: 4 m<sup>2</sup>/ha, 6 site(s)

Structural formation: Woodland: 83%; open-forest: 17%, 6 site(s)

Representative sites: 26113, 26543, 26675, 26809, 26884, 26891.

**Stratum: T1**

Height avg. = 19.2m, range 16-25m, 6 sites

Crown cover avg. = 52.0%, range 38.0-64.7%, 6 sites

Stem density/ha avg. = 160, range 120-220, 3 sites

*Dominant species (relative cover, frequency): Eucalyptus camaldulensis (64, 33%), Eucalyptus platyphylla (46, 67%), Corymbia clarksoniana (25, 33%), Eucalyptus crebra (20, 50%), Corymbia tessellaris (16, 67%)*

*Frequent species (cover, frequency): Corymbia tessellaris (11, 67%), Eucalyptus platyphylla (21, 67%), Eucalyptus crebra (9, 50%), Corymbia clarksoniana (21, 33%), Eucalyptus camaldulensis (47, 33%), Corymbia erythrophloia (14, 17%), Eucalyptus coolabah (27, 17%)*

**Stratum: T2**

Height avg. = 9.3m, range 7-12m, 4 sites

Crown cover avg. = 4.1%, range 2.9-6.1%, 4 sites

Stem density/ha avg. = 320, range 260-380, 2 sites

*Dominant species (relative cover, frequency): Corymbia tessellaris (49, 33%), Eucalyptus camaldulensis (44, 33%)*

*Frequent species (cover, frequency): Corymbia tessellaris (1, 33%), Eucalyptus camaldulensis (2, 33%), Alectryon oleifolius (1, 17%), Corymbia clarksoniana (4, 17%), Corymbia erythrophloia (17%), Erythrina vesperilio (4, 17%), Eucalyptus crebra (17%), Eucalyptus platyphylla (1, 17%), Pleiogygium timorense (2, 17%)*

Dominant species: Relative cover (mean of cover of species / total cover of all species in that stratum for all values > zero) and frequency (percent of total sites) ordered by decreasing relative abundance. Up to five most dominant species with frequency > 20% listed for each stratum.

Frequent species: Cover (mean of all values > zero) and frequency (percent of total sites) of all species occurring in more than 5% of sites ordered by decreasing frequency. Ground layer species are listed as either graminoid or forb.

Naturalised species have an asterisk (\*) after the name. indet. after listed name = indeterminate species or genus

**Stratum: S1**

Height avg. = 1.8m, range 1-2.5m, 5 sites

Crown cover avg. = 4.9%, range 0.0-15.9%, 5 sites

Stem density/ha avg. = 187, range 20-440, 3 sites

*Frequent species (cover, frequency):* *Breynia oblongifolia* (17%), *Capparis lasiantha* (17%), *Carissa lanceolata* (17%), *Corymbia clarksoniana* (17%), *Crotalaria goreensis*\* (1, 17%), *Crotalaria verrucosa* (17%), *Eucalyptus platyphylla* (1, 17%), *Grewia retusifolia* (17%), *Hibiscus meraukensis* (17%), *Malvastrum americanum* var. *americanum*\* (16, 17%), *Maytenus cunninghamii* (17%), *Sida cordifolia*\* (6, 17%), *Sida hackettiana* (17%), *Triumfetta rhomboidea*\* (17%)

**Stratum: G**

Height avg. = 0.7m, range 0.6-0.8m, 5 sites

PFC avg. = 93.2%, range 85-100%, 5 sites

*Dominant species (relative cover, frequency):* *Heteropogon contortus* (52, 50%), *Bothriochloa bladhii* subsp. *bladhii* (26, 33%), *Arundinella nepalensis* (11, 33%), *Melinis repens*\* (6, 33%), *Mukia maderaspatana* (2, 33%)

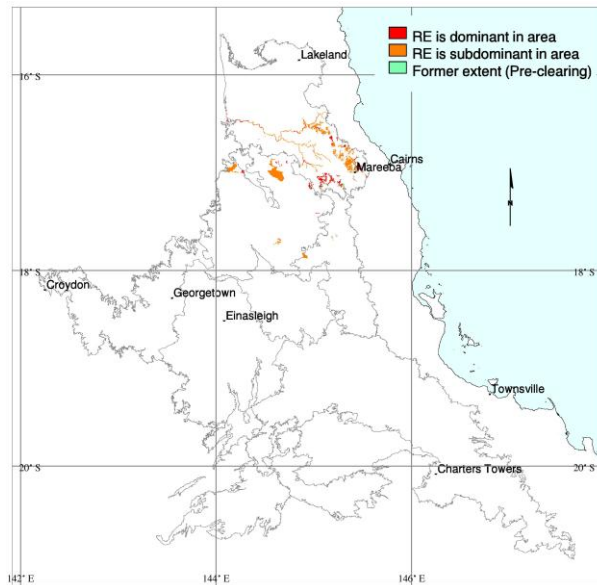
*Frequent species (cover, frequency):* **GRAMINOIDS:** *Heteropogon contortus* (47, 50%), *Mnesithea rottboellioides* (50%), *Arundinella nepalensis* (10, 33%), *Bothriochloa bladhii* subsp. *bladhii* (24, 33%), *Cyperus* *indet.* (33%), *Melinis repens*\* (6, 33%), *Panicum* *indet.* (1, 33%), *Abildgaardia* *indet.* (20, 17%), *Aristida calycina* var. *calycina* (17%), *Bothriochloa bladhii* (17%), *Bothriochloa decipiens* var. *cloncurrrens* (2, 17%), *Bothriochloa* *indet.* (6, 17%), *Bothriochloa pertusa*\* (6, 17%), *Capillipedium spicigerum* (30, 17%), *Cyperus haspan* subsp. *juncooides* (17%), *Dichanthium sericeum* (17%), *Digitaria ciliaris*\* (4, 17%), *Echinochloa* *indet.* (17%), *Enneapogon lindleyanus* (17%), *Eragrostis brownii* (40, 17%), *Eragrostis* *indet.* (17%), *Eragrostis schultzei* (17%), *Fimbristylis* *indet.* (17%), *Heteropogon triticeus* (17%), *Imperata cylindrica* (10, 17%), *Pennisetum ciliare*\* (70, 17%), *Poaceae* *indet.* (17%), *Sarga plumosum* (17%), *Scleria* *indet.* (2, 17%), *Setaria surgens* (17%), *Sporobolus* *indet.* (1, 17%), *Themeda quadrivalvis*\* (2, 17%), *Themeda triandra* (5, 17%), *Urochloa mosambicensis*\* (30, 17%)  
**FORBS:** *Cyanthillium cinereum* (33%), *Mukia maderaspatana* (2, 33%), *Boerhavia* *indet.* (17%), *Centipeda racemosa* (17%), *Chamaesyce hirta*\* (17%), *Conyza* *indet.* (17%), *Crotalaria brevis* (1, 17%), *Crotalaria mitchellii* (2, 17%), *Desmodium* *indet.* (17%), *Eclipta prostrata* (17%), *Flemingia parviflora* (17%), *Galactia tenuiflora* var. *lucida* (17%), *Glycine* *indet.* (6, 17%), *Goodenia* *indet.* (17%), *Grewia retusifolia* (17%), *Hybanthus* *indet.* (17%), *Hypoestes* *indet.* (17%), *Indigofera linnaei* (1, 17%), *Ludwigia octovalvis* (17%), *Passiflora foetida*\* (17%), *Phyllanthus* *indet.* (17%), *Richardia* *indet.* (17%), *Sida hackettiana* (17%), *Sida rhombifolia*\* (17%), *Vigna vexillata* var. *angustifolia* (17%), *Wahlenbergia* *indet.* (17%)

Dominant species: Relative cover (mean of cover of species / total cover of all species in that stratum for all values > zero) and frequency (percent of total sites) ordered by decreasing relative abundance. Up to five most dominant species with frequency > 20% listed for each stratum.

Frequent species: Cover (mean of all values > zero) and frequency (percent of total sites) of all species occurring in more than 5% of sites ordered by decreasing frequency. Ground layer species are listed as either graminoid or forb.

Naturalised species have an asterisk (\*) after the name. *indet.* after listed name = indeterminate species or genus

**Eucalyptus leptophleba +/- Corymbia spp. +/- Erythrophleum chlorostachys woodland on alluvial plains and terraces**



J.E. Kemp

Pre-clearing area (ha), remnant area (ha) and per cent remaining: 28,228 18,067 64%

Species recorded: Total: 215; woody: 54; ground: 170; Avg. spp./site: 36.0; std dev.: 18.0, 11 site(s)

Basal area: Avg./site: 10.8 m<sup>2</sup>/ha, range: 5.5 - 15 m<sup>2</sup>/ha, std. deviation: 3 m<sup>2</sup>/ha, 7 site(s)

Structural formation: Woodland: 64%; open-woodland: 36%, 11 site(s)

Representative sites: 25947, 25949, 25962, 25989, 26001, 26069, 27068, 27073, 27089, 27124, 38944.

**Stratum: T1**

Height avg. = 16.8m, range 11-23m, 11 sites

Crown cover avg. = 21.0%, range 6.1-46.5%, 11 sites

Stem density/ha avg. = 92, range 10-220, 11 sites

*Dominant species (relative cover, frequency): Eucalyptus leptophleba (63, 91%), Eucalyptus cullenii (39, 27%), Corymbia clarksoniana (23, 55%), Eucalyptus platyphylla (22, 45%), Corymbia dallachiana (4, 27%)*

*Frequent species (cover, frequency): Eucalyptus leptophleba (10, 91%), Corymbia clarksoniana (7, 55%), Eucalyptus platyphylla (4, 45%), Corymbia dallachiana (1, 27%), Eucalyptus cullenii (9, 27%), Corymbia confertiflora (9%), Corymbia tessellaris (9%), Erythrophleum chlorostachys (14, 9%), Melaleuca stenostachya (3, 9%)*

**Stratum: T2**

Height avg. = 7.3m, range 4.5-13m, 11 sites

Crown cover avg. = 10.1%, range 0.6-48.5%, 11 sites

Stem density/ha avg. = 211, range 40-1060, 11 sites

*Dominant species (relative cover, frequency): Petalostigma pubescens (52, 36%), Eucalyptus cullenii (51, 27%), Melaleuca stenostachya (40, 27%), Grevillea striata (38, 36%), Melaleuca viridiflora (35, 27%)*

*Frequent species (cover, frequency): Eucalyptus leptophleba (1, 64%), Grevillea striata (3, 36%), Melaleuca nervosa (36%), Petalostigma pubescens (13, 36%), Corymbia clarksoniana (1, 27%), Corymbia dallachiana (27%), Eucalyptus cullenii (5, 27%), Melaleuca stenostachya (4, 27%), Melaleuca viridiflora (2, 27%), Erythrophleum chlorostachys (2, 18%), Maytenus cunninghamii (18%), Acacia aulacocarpa (9%), Brachychiton diversifolius (1, 9%), Brachychiton diversifolius subsp. orientalis (9%), Erythroxylum indet. (9%), Eucalyptus platyphylla (9%), Hakea persiehana (9%), Petalostigma banksii (9%), Terminalia platyptera (9%)*

Dominant species: Relative cover (mean of cover of species / total cover of all species in that stratum for all values > zero) and frequency (percent of total sites) ordered by decreasing relative abundance. Up to five most dominant species with frequency > 20% listed for each stratum.

Frequent species: Cover (mean of all values > zero) and frequency (percent of total sites) of all species occurring in more than 5% of sites ordered by decreasing frequency. Ground layer species are listed as either graminoid or forb.

Naturalised species have an asterisk (\*) after the name. indet. after listed name = indeterminate species or genus

**Stratum: S1**

Height avg. = 1.7m, range 1-3m, 11 sites

Crown cover avg. = 2.2%, range 0.0-6.1%, 11 sites

Stem density/ha avg. = 480, range 40-1660, 7 sites

*Dominant species (relative cover, frequency): Melaleuca viridiflora (33, 36%), Petalostigma pubescens (33, 36%), Planchonia careya (29, 36%), Cryptostegia grandiflora\* (22, 27%), Maytenus cunninghamii (9, 27%)*

*Frequent species (cover, frequency): Grevillea parallela (36%), Grevillea striata (36%), Melaleuca viridiflora (36%), Petalostigma pubescens (36%), Planchonia careya (36%), Cryptostegia grandiflora\* (1, 27%), Eucalyptus leptophleba (27%), Grewia retusifolia (27%), Maytenus cunninghamii (27%), Acacia bidwillii (1, 18%), Acacia holosericea (18%), Alphitonia pomaderroides (18%), Breynia oblongifolia (18%), Erythrophleum chlorostachys (1, 18%), Grevillea glauca (18%), Melaleuca nervosa (18%), Melaleuca stenostachya (18%), Acacia aulacocarpa (9%), Acacia leptocarpa (9%), Acacia polystachya (9%), Alphitonia excelsa (9%), Antidesma indet. (9%), Antidesma parvifolium (9%), Atalaya variifolia (1, 9%), Callitris intratropica (9%), Carissa indet. (9%), Carissa lanceolata (1, 9%), Carissa ovata (9%), Corymbia clarksoniana (9%), Corymbia dallachiana (9%), Grevillea mimosoides (9%), Grewia indet. (9%), Indigofera pratensis (9%), Jasminum didymum (9%), Lantana camara\* (9%), Melaleuca minutifolia (9%), Melaleuca monantha (1, 9%), Pandanus indet. (9%), Persoonia falcata (9%), Santalum lanceolatum (9%), Siphonodon pendulus (9%), Stylosanthes guianensis\* (9%), Terminalia indet. (9%), Terminalia platyptera (9%), Ventilago viminalis (9%)*

---

Dominant species: Relative cover (mean of cover of species / total cover of all species in that stratum for all values > zero) and frequency (percent of total sites) ordered by decreasing relative abundance. Up to five most dominant species with frequency > 20% listed for each stratum.

Frequent species: Cover (mean of all values > zero) and frequency (percent of total sites) of all species occurring in more than 5% of sites ordered by decreasing frequency. Ground layer species are listed as either graminoid or forb.

Naturalised species have an asterisk (\*) after the name. indet. after listed name = indeterminate species or genus



**Stratum: G**

Height avg. = 0.4m, range 0.15-0.8m, 11 sites

PFC avg. = 51.0%, range 5-81%, 11 sites

*Dominant species (relative cover, frequency):* *Aristida* indet. (37, 36%), *Aristida pruinosa* (35, 27%), *Heteropogon contortus* (26, 82%), *Themeda triandra* (24, 45%), *Schizachyrium fragile* (6, 45%)

*Frequent species (cover, frequency):* GRAMINOIDS: *Heteropogon contortus* (9, 82%), *Themeda quadrivalvis*\* (1, 55%), *Fimbristylis dichotoma* (2, 45%), *Schizachyrium fragile* (4, 45%), *Themeda triandra* (16, 45%), *Aristida* indet. (23, 36%), *Eragrostis spartinooides* (2, 36%), *Aristida pruinosa* (24, 27%), *Chrysopogon fallax* (3, 27%), *Eragrostis* indet. (27%), *Mnesithea formosa* (27%), *Panicum effusum* (1, 27%), *Pseudopogonatherum contortum* (27%), *Alloteropsis cimicina* (18%), *Aristida biglandulosa* (3, 18%), *Aristida pernicioso* (2, 18%), *Arundinella setosa* (5, 18%), *Bothriochloa bladhii* (1, 18%), *Bothriochloa decipiens* var. *cloncurrrens* (1, 18%), *Capillipedium parviflorum* (1, 18%), *Eragrostis tenellula* (1, 18%), *Heteropogon triticeus* (4, 18%), *Panicum* indet. (2, 18%), *Panicum seminudum* (18%), *Perotis rara* (18%), *Poaceae* indet. (2, 18%), *Sarga plumosum* (5, 18%), *Schizachyrium* indet. (1, 18%), *Sporobolus australasicus* (1, 18%), *Sporobolus* indet. (1, 18%), *Alloteropsis semialata* (9%), *Aristida holathera* var. *holathera* (1, 9%), *Aristida latifolia* (9%), *Aristida superpendens* (3, 9%), *Aristida utilis* (9%), *Arundinella* indet. (9%), *Arundinella nepalensis* (9%), *Bothriochloa decipiens* var. *decipiens* (3, 9%), *Chloris pectinata* (9%), *Cymbopogon refractus* (9%), *Dichanthium* indet. (9%), *Enneapogon lindleyanus* (1, 9%), *Eragrostis cumingii* (9%), *Eragrostis exigua* (9%), *Eragrostis fallax* (9%), *Eragrostis leptostachya* (9%), *Eriachne obtusa* (1, 9%), *Eriachne squarrosa* (9%), *Fimbristylis depauperata* (9%), *Fimbristylis microcarya* (1, 9%), *Melinis repens*\* (5, 9%), *Mnesithea granularis* (9%), *Paspalidium distans* (9%), *Schizachyrium pseudeulalia* (9%), *Scleria brownii* (1, 9%), *Setaria apiculata* (9%), *Setaria sphacelata*\* (9%), *Sorghum* indet. (9%), *Sporobolus caroli* (9%), *Thaumastochloa* indet. (9%), *Thaumastochloa rariflora* (9%)  
 FORBS: *Grewia retusifolia* (1, 55%), *Cayratia trifolia* (36%), *Cyanthillium cinereum* (36%), *Rostellularia adscendens* (36%), *Spermacoce latifolia*\* (1, 36%), *Stylosanthes scabra*\* (3, 36%), *Brunoniella acaulis* (1, 27%), *Crotalaria medicaginea* (27%), *Evolvulus alsinoides* (27%), *Flemingia parviflora* (1, 27%), *Galactia tenuiflora* (27%), *Lomandra* indet. (27%), *Rhynchosia minima* var. *minima* (27%), *Sida hackettiana* (2, 27%), *Sida spinosa*\* (27%), *Acmella grandiflora* var. *brachyglossa* (18%), *Alternanthera nana* (18%), *Carissa lanceolata* (18%), *Crotalaria brevis* (18%), *Glycine* indet. (18%), *Hybanthus enneaspermus* (1, 18%), *Hyptis suaveolens*\* (18%), *Indigofera linnaei* (1, 18%), *Ipomoea polymorpha* (18%), *Malvastrum* indet. (18%), *Melaleuca viridiflora* (1, 18%), *Melhania oblongifolia* (18%), *Mitracarpus hirtus*\* (18%), *Phyllanthus* indet. (18%), *Phyllanthus similis* (18%), *Ptilotus macrocephalus* (18%), *Stylosanthes humilis*\* (18%), *Tephrosia juncea* (18%), *Zornia* indet. (18%), *Acacia* indet. (9%), *Acacia polystachya* (1, 9%), *Achyranthes aspera* (9%), *Aeschynomene villosa*\* (9%), *Alternanthera micrantha* (9%), *Alysicarpus* indet. (1, 9%), *Alysicarpus vaginalis*\* (9%), *Amaranthaceae* indet. (9%), *Aristolochia pubera* (9%), *Asteraceae* indet. (2, 9%), *Breynia oblongifolia* (1, 9%), *Buchnera linearis* (9%), *Caesalpinia* indet. (1, 9%), *Camptacra barbata* (1, 9%), *Cassytha filiformis* (9%), *Celastraceae* indet. (9%), *Chamaecrista absus* var. *absus* (9%), *Chamaecrista exigua* var. *exigua* (9%), *Chamaesyce hirta*\* (9%), *Chamaesyce* indet. (9%), *Chamaesyce vachellii* (9%), *Cheilanthes* indet. (9%), *Corchorus aestuans* (1, 9%), *Corchorus tridens* (9%), *Crotalaria calycina* (1, 9%), *Crotalaria montana* (9%), *Desmodium filiforme* (9%), *Desmodium muelleri* (9%), *Desmodium pullenii* (1, 9%), *Eclipta prostrata* (9%), *Emilia sonchifolia*\* (9%), *Erythroxylum ellipticum* (9%), *Galactia* indet. (9%), *Geitonoplesium* indet. (9%), *Glycine curvata* (1, 9%), *Glycine tomentella* (1, 9%), *Goodenia armitiana* (9%), *Goodenia pilosa* (9%), *Grevillea parallela* (9%), *Hibiscus* indet. (9%), *Indigofera colutea* (1, 9%), *Indigofera* indet. (9%), *Indigofera pratensis* (1, 9%), *Indigofera trifoliata* (1, 9%), *Ipomoea eriocarpa* (9%), *Ipomoea gracilis* (9%), *Jacquemontia* indet. (9%), *Ludwigia perennis* (9%), *Mitrasacme pygmaea* (9%), *Ocimum americanum* var. *americanum*\* (9%), *Passiflora foetida*\* (9%), *Phyllanthus simplex* (9%), *Phyllanthus virgatus* (9%), *Planckonia careya* (3, 9%), *Pterocaulon redolens* (9%), *Pterocaulon sphacelatum* (9%), *Rhynchosia* indet. (6, 9%), *Rhynchosia minima* (9%), *Sida* indet. (1, 9%), *Sida rhombifolia*\* (9%), *Spermacoce brachystema* (9%), *Stachytarpheta jamaicensis*\* (9%), *Striga curviflora* (9%), *Stylosanthes* indet. (5, 9%), *Tacca leontopetaloides* (9%), *Tephrosia leptoclada* (9%), *Terminalia* indet. (9%), *Thecanthes cornucopiae* (9%), *Uraria lagopodioides* (9%), *Uraria picta* (9%), *Vigna* indet. (9%), *Wedelia spilanthis* (9%), *Zornia dyctiocarpa* var. *filifolia* (9%), *Zornia muriculata* (9%), *Zornia muriculata* subsp. *angustata* (1, 9%)

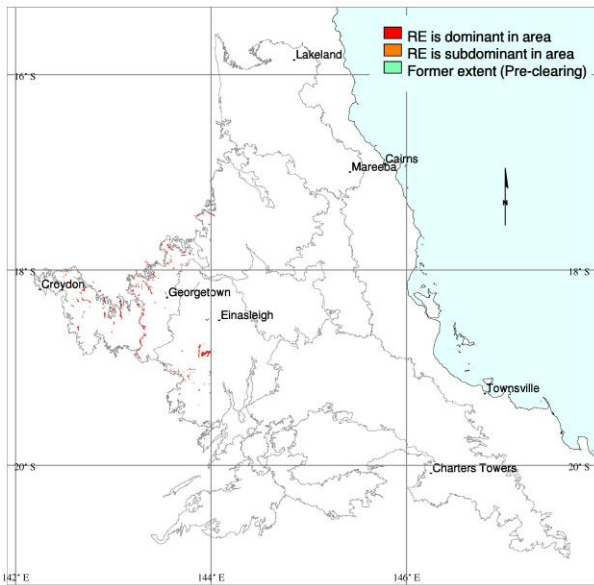
Dominant species: Relative cover (mean of cover of species / total cover of all species in that stratum for all values > zero) and frequency (percent of total sites) ordered by decreasing relative abundance. Up to five most dominant species with frequency > 20% listed for each stratum.

Frequent species: Cover (mean of all values > zero) and frequency (percent of total sites) of all species occurring in more than 5% of sites ordered by decreasing frequency. Ground layer species are listed as either graminoid or forb.

Naturalised species have an asterisk (\*) after the name. indet. after listed name = indeterminate species or genus



**Eucalyptus leptophleba +/- Corymbia spp. woodland on alluvial plains and levees**



M. Newton

Pre-clearing area (ha), remnant area (ha) and per cent remaining: 21,915 21,784 99%

Species recorded: Total: 50; woody: 17; ground: 33; Avg. spp./site: 20.7; std dev.: 4.0, 3 site(s)

Basal area: Avg./site: 5.7 m<sup>2</sup>/ha, range: 4.0 - 7 m<sup>2</sup>/ha, std. deviation: 1 m<sup>2</sup>/ha, 3 site(s)

Structural formation: Woodland: 100%, 3 site(s)

Representative sites: 26650, 26672, 26852.

**Stratum: T1**

Height avg. = 11.7m, range 8-15m, 3 sites

Crown cover avg. = 20.6%, range 7.9-27.0%, 3 sites

Stem density/ha avg. = 113, range 60-180, 3 sites

*Dominant species (relative cover, frequency): Eucalyptus camaldulensis (50, 67%), Eucalyptus leptophleba (44, 100%), Terminalia platyphylla (33, 33%), Cryptostegia grandiflora\* (33, 33%)*

*Frequent species (cover, frequency): Eucalyptus leptophleba (10, 100%), Corymbia clarksoniana (67%), Eucalyptus camaldulensis (13, 67%), Corymbia confertiflora (33%), Corymbia dallachiana (33%), Corymbia erythrophloia (33%), Cryptostegia grandiflora\* (2, 33%), Melaleuca indet. (33%), Terminalia platyphylla (2, 33%)*

**Stratum: T2**

Height avg. = 6.0m, range 4-8m, 2 sites

Crown cover avg. = 1.5%, range 0.0-2.9%, 2 sites

Stem density/ha avg. = 210, range 120-300, 2 sites

*Dominant species (relative cover, frequency): Adenantha abrosperma (56, 33%), Eucalyptus leptophleba (33, 33%), Corymbia erythrophloia (33, 33%), Corymbia dallachiana (33, 33%), Terminalia platyptera (31, 33%)*

*Frequent species (cover, frequency): Adenantha abrosperma (1, 33%), Corymbia dallachiana (33%), Corymbia erythrophloia (33%), Eucalyptus leptophleba (33%), Lysiphillum indet. (33%), Terminalia platyphylla (33%), Terminalia platyptera (1, 33%)*

Dominant species: Relative cover (mean of cover of species / total cover of all species in that stratum for all values > zero) and frequency (percent of total sites) ordered by decreasing relative abundance. Up to five most dominant species with frequency > 20% listed for each stratum.

Frequent species: Cover (mean of all values > zero) and frequency (percent of total sites) of all species occurring in more than 5% of sites ordered by decreasing frequency. Ground layer species are listed as either graminoid or forb.

Naturalised species have an asterisk (\*) after the name. indet. after listed name = indeterminate species or genus

**Stratum: S1**

Height avg. = 2.0m, range 1.5-3m, 3 sites

Crown cover avg. = 1.0%, range 0.0-2.9%, 3 sites

Stem density/ha avg. = 380, 1 site

*Dominant species (relative cover, frequency):* *Planchonia careya* (57, 67%), *Gardenia vilhelmii* (33, 67%), *Hakea arborescens* (25, 33%), *Grevillea mimosoides* (25, 33%), *Carissa lanceolata* (25, 33%)

*Frequent species (cover, frequency):* *Gardenia vilhelmii* (67%), *Planchonia careya* (67%), *Adenanthera abrosperma* (33%), *Carissa lanceolata* (33%), *Cryptostegia grandiflora*\* (33%), *Eucalyptus leptophleba* (33%), *Grevillea mimosoides* (33%), *Hakea arborescens* (33%), *Lysiphyllum indet.* (33%)

**Stratum: G**

Height avg. = 0.5m, range 0.2-0.7m, 3 sites

PFC avg. = 44.7%, range 24-58%, 3 sites

*Dominant species (relative cover, frequency):* *Hyptis suaveolens*\* (70, 33%), *Dactyloctenium radulans* (40, 33%), *Panicum seminudum var. cairnsianum* (33, 33%), *Elionurus citreus* (33, 33%), *Panicum indet.* (12, 67%)

*Frequent species (cover, frequency):* **GRAMINOIDS:** *Heteropogon contortus* (6, 100%), *Aristida indet.* (67%), *Panicum indet.* (7, 67%), *Setaria surgens* (2, 67%), *Dactyloctenium radulans* (17, 33%), *Elionurus citreus* (19, 33%), *Enteropogon indet.* (33%), *Eragrostis cumingii* (5, 33%), *Eragrostis indet.* (3, 33%), *Melinis repens*\* (33%), *Panicum seminudum var. cairnsianum* (19, 33%), *Perotis rara* (33%), *Schizachyrium indet.* (1, 33%), *Setaria indet.* (33%)

**FORBS:** *Malvastrum americanum var. americanum*\* (4, 67%), *Spermacoce indet.* (2, 67%), *Alternanthera nana* (33%), *Angiosperm indet.* (33%), *Boerhavia indet.* (33%), *Crotalaria indet.* (33%), *Dendrolobium arbuscula* (33%), *Desmodium indet.* (2, 33%), *Fabaceae indet.* (1, 33%), *Grewia retusifolia* (33%), *Hyptis suaveolens*\* (37, 33%), *Indigofera indet.* (33%), *Indigofera linifolia* (33%), *Portulaca filifolia* (33%), *Pterocaulon indet.* (33%), *Sida indet.* (33%), *Tephrosia indet.* (3, 33%), *Triumfetta pentandra*\* (33%), *Wedelia indet.* (33%)

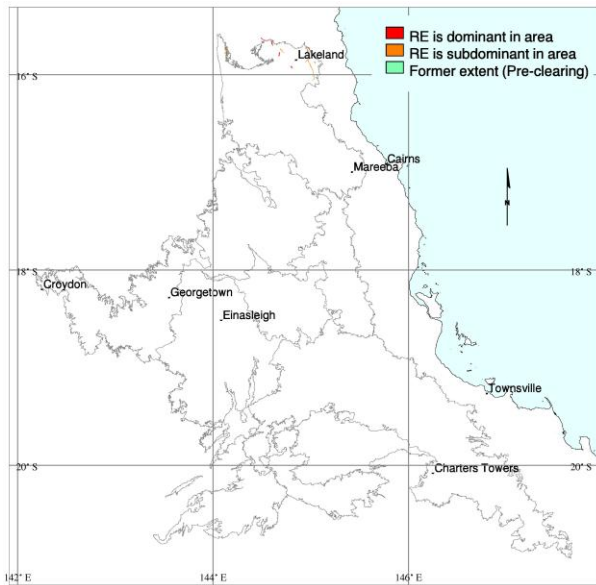
---

Dominant species: Relative cover (mean of cover of species / total cover of all species in that stratum for all values > zero) and frequency (percent of total sites) ordered by decreasing relative abundance. Up to five most dominant species with frequency > 20% listed for each stratum.

Frequent species: Cover (mean of all values > zero) and frequency (percent of total sites) of all species occurring in more than 5% of sites ordered by decreasing frequency. Ground layer species are listed as either graminoid or forb.

Naturalised species have an asterisk (\*) after the name. indet. after listed name = indeterminate species or genus

**Eucalyptus leptophleba +/- Erythrophleum chlorostachys woodland on alluvial flats**



M. Newton

Pre-clearing area (ha), remnant area (ha) and per cent remaining: 1,508 1,437 95%

Species recorded: Total: 49; woody: 25; ground: 29; Avg. spp./site: 27.5; std dev.: 5.5, 2 site(s)

Basal area: Avg./site: 9.6 m<sup>2</sup>/ha, range: 9.3 - 10 m<sup>2</sup>/ha, std. deviation: 0 m<sup>2</sup>/ha, 2 site(s)

Structural formation: Woodland: 100%, 2 site(s)

Representative sites: 4286, 40605.

**Stratum: T1**

Height avg. = 18.5m, range 18-19m, 2 sites

Crown cover avg. = 48.3%, range 42.3-54.3%, 2 sites

Stem density/ha avg. = 160, range 80-240, 2 sites

*Dominant species (relative cover, frequency): Eucalyptus leptophleba (83, 100%), Erythrophleum chlorostachys (14, 100%), Corymbia clarksoniana (2, 100%), Eucalyptus tetradonta (1, 50%)*

*Frequent species (cover, frequency): Corymbia clarksoniana (1, 100%), Erythrophleum chlorostachys (6, 100%), Eucalyptus leptophleba (36, 100%), Brachychiton diversifolius (50%), Corymbia confertiflora (50%), Cymbidium canaliculatum (50%), Eucalyptus tetradonta (1, 50%)*

**Stratum: T2**

Height avg. = 9.0m, range 8-10m, 2 sites

Crown cover avg. = 3.3%, range 0.6-6.1%, 2 sites

Stem density/ha avg. = 90, range 20-160, 2 sites

*Dominant species (relative cover, frequency): Corymbia confertiflora (93, 50%), Terminalia aridicola subsp. chillagoensis (49, 50%), Melaleuca viridiflora (18, 50%), Eucalyptus tetradonta (18, 50%), Melaleuca stenostachya (6, 50%)*

*Frequent species (cover, frequency): Erythrophleum chlorostachys (100%), Aristolochia indet. (50%), Brachychiton diversifolius subsp. orientalis (50%), Corymbia clarksoniana (50%), Corymbia confertiflora (1, 50%), Erythroxylum ellipticum (50%), Eucalyptus leptophleba (50%), Eucalyptus tetradonta (1, 50%), Maytenus cunninghamii (50%), Melaleuca stenostachya (50%), Melaleuca viridiflora (1, 50%), Santalum indet. (50%), Siphonodon pendulus (50%), Terminalia aridicola subsp. chillagoensis (2, 50%)*

Dominant species: Relative cover (mean of cover of species / total cover of all species in that stratum for all values > zero) and frequency (percent of total sites) ordered by decreasing relative abundance. Up to five most dominant species with frequency > 20% listed for each stratum.

Frequent species: Cover (mean of all values > zero) and frequency (percent of total sites) of all species occurring in more than 5% of sites ordered by decreasing frequency. Ground layer species are listed as either graminoid or forb.

Naturalised species have an asterisk (\*) after the name. indet. after listed name = indeterminate species or genus

**Stratum: S1**

Height avg. = 2.3m, range 1.5-3m, 2 sites

Crown cover avg. = 13.5%, range 0.0-27.0%, 2 sites

Stem density/ha avg. = 430, range 220-640, 2 sites

*Dominant species (relative cover, frequency): Terminalia aridicola subsp. chillagoensis (53, 50%), Terminalia indet. (25, 50%), Petalostigma pubescens (25, 50%), Cryptostegia grandiflora\* (25, 50%), Erythrophleum chlorostachys (15, 100%)*

*Frequent species (cover, frequency): Erythrophleum chlorostachys (100%), Acacia oraria (50%), Adenanthera abrosperma (1, 50%), Cryptostegia grandiflora\* (50%), Dolichandrone heterophylla (1, 50%), Erythroxyllum ellipticum (1, 50%), Eucalyptus leptophleba (1, 50%), Grevillea parallela (2, 50%), Hibiscus meraukensis (50%), Melaleuca stenostachya (50%), Petalostigma pubescens (50%), Planchonia careya (50%), Siphonodon pendulus (1, 50%), Terminalia aridicola subsp. chillagoensis (6, 50%), Terminalia indet. (50%)*

**Stratum: S2**

Height avg. = 0.8m, 1 site

Crown cover avg. = 0.0%, 1 site

Stem density/ha avg. = 300, 1 site

*Dominant species (relative cover, frequency): Erythrophleum chlorostachys (100, 50%)*

*Frequent species (cover, frequency): Erythrophleum chlorostachys (50%)*

**Stratum: G**

Height avg. = 0.6m, range 0.3-0.8m, 2 sites

PFC avg. = 43.5%, range 27-60%, 2 sites

*Dominant species (relative cover, frequency): Panicum indet. (54, 100%), Aristida indet. (18, 50%), Hyptis suaveolens\* (13, 100%), Perotis indet. (10, 50%), Erythrophleum chlorostachys (9, 50%)*

*Frequent species (cover, frequency): GRAMINOIDS: Panicum indet. (26, 100%), Aristida indet. (5, 50%), Eragrostis indet. (1, 50%), Eriachne indet. (1, 50%), Heteropogon contortus (50%), Perotis indet. (6, 50%), Poaceae indet. (50%), Setaria surgens (50%), Sorghum indet. (50%), Sporobolus indet. (50%), Themeda arguens (50%)*

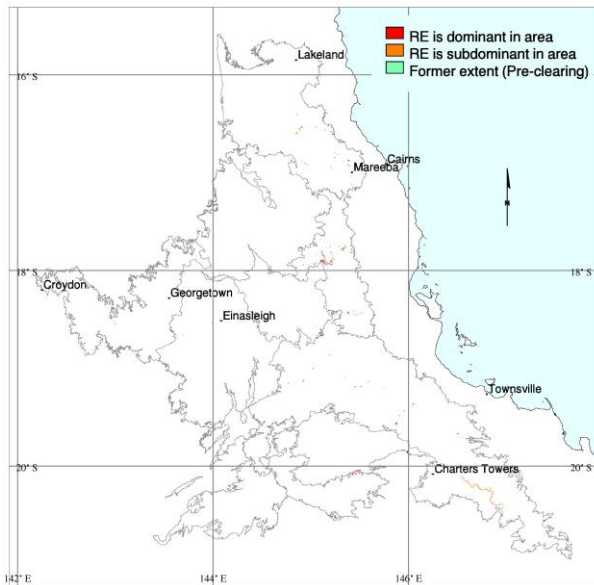
*FORBS: Hyptis suaveolens\* (4, 100%), Sida indet. (2, 100%), Alternanthera indet. (50%), Bidens pilosa\* (50%), Chamaecrista absus var. absus (50%), Cheilanthes indet. (50%), Chrysophyllum indet. (50%), Corchorus indet. (50%), Crotalaria medicaginea (50%), Cucurbitaceae indet. (50%), Erythrophleum chlorostachys (5, 50%), Eucalyptus chlorophylla (50%), Euphorbiaceae indet. (50%), Grewia retusifolia (50%), Helicteres indet. (50%), Hibiscus meraukensis (50%), Malvastrum indet. (2, 50%), Xenostegia tridentata (50%)*

Dominant species: Relative cover (mean of cover of species / total cover of all species in that stratum for all values > zero) and frequency (percent of total sites) ordered by decreasing relative abundance. Up to five most dominant species with frequency > 20% listed for each stratum.

Frequent species: Cover (mean of all values > zero) and frequency (percent of total sites) of all species occurring in more than 5% of sites ordered by decreasing frequency. Ground layer species are listed as either graminoid or forb.

Naturalised species have an asterisk (\*) after the name. indet. after listed name = indeterminate species or genus

**Permanent or seasonal wetlands frequently fringed by narrow bands of trees and shrubs including *Eucalyptus* spp. on alluvial plains**



M. Newton

Pre-clearing area (ha), remnant area (ha) and per cent remaining: 7,157 5,272 74%

Species recorded: Total: 13; woody: 2; ground: 15; Avg. spp./site: 8.5; std dev.: 0.5, 2 site(s)

Basal area: Avg./site: 1.0 m<sup>2</sup>/ha, range: 1.0 - 1 m<sup>2</sup>/ha, std. deviation: 0 m<sup>2</sup>/ha, 1 site(s)

Structural formation: Sedgeland: 50%; open-sedgeland: 50%, 2 site(s)

Representative sites: 26166, 37306.

**Stratum: E**

Height avg. = 15.0m, 1 site

Crown cover avg. = 0.0%, 1 site

*Dominant species (relative cover, frequency): Eucalyptus platyphylla (50, 50%), Eucalyptus leptophleba (50, 50%)*

*Frequent species (cover, frequency): Eucalyptus leptophleba (50%), Eucalyptus platyphylla (50%)*

**Stratum: G**

Height avg. = 0.7m, range 0.4-1m, 2 sites

PFC avg. = 84.5%, range 77-92%, 2 sites

*Dominant species (relative cover, frequency): Eleocharis sphacelata (36, 100%), Pseudoraphis spinescens (29, 100%), Najas tenuifolia (23, 50%), Marsilea mutica (22, 50%), Eleocharis philippinensis (11, 50%)*

*Frequent species (cover, frequency): GRAMINOIDS: Eleocharis sphacelata (34, 100%), Pseudoraphis spinescens (23, 100%), Eleocharis philippinensis (10, 50%)*

*FORBS: Caldesia oligococca (1, 100%), Myriophyllum simulans (100%), Alternanthera micrantha (50%), Asteraceae indet. (50%), Ludwigia octovalvis (50%), Ludwigia peploides (50%), Marsilea indet. (50%), Marsilea mutica (17, 50%), Melochia corchorifolia (50%), Najas tenuifolia (18, 50%), Nymphoides indica (50%), Potamogeton tricarinatus (9, 50%)*

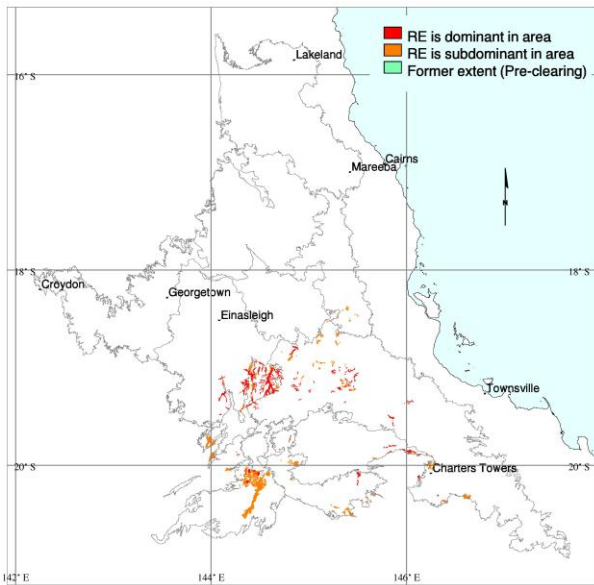
Dominant species: Relative cover (mean of cover of species / total cover of all species in that stratum for all values > zero) and frequency (percent of total sites) ordered by decreasing relative abundance. Up to five most dominant species with frequency > 20% listed for each stratum.

Frequent species: Cover (mean of all values > zero) and frequency (percent of total sites) of all species occurring in more than 5% of sites ordered by decreasing frequency. Ground layer species are listed as either graminoid or forb.

Naturalised species have an asterisk (\*) after the name. indet. after listed name = indeterminate species or genus



**Eucalyptus brownii +/- Eucalyptus spp. +/- Corymbia spp. open-woodland on alluvial plains**



C. Kahler

Pre-clearing area (ha), remnant area (ha) and per cent remaining: 59,474 57,963 97%

Species recorded: Total: 139; woody: 27; ground: 117; Avg. spp./site: 26.7; std dev.: 8.8, 7 site(s)

Basal area: Avg./site: 5.8 m<sup>2</sup>/ha, range: 1.0 - 10 m<sup>2</sup>/ha, std. deviation: 3 m<sup>2</sup>/ha, 10 site(s)

Structural formation: Woodland: 60%; open-woodland: 40%, 10 site(s)

Representative sites: 26013, 26017, 26109, 26237, 26533, 26659, 26901, 26977, 37331, 39384.

**Stratum: T1**

Height avg. = 15.9m, range 10-20m, 10 sites

Crown cover avg. = 25.1%, range 1.6-54.3%, 10 sites

Stem density/ha avg. = 106, range 20-340, 7 sites

*Dominant species (relative cover, frequency): Eucalyptus brownii (87, 100%), Eucalyptus crebra (16, 30%), Corymbia dallachiana (3, 50%)*

*Frequent species (cover, frequency): Eucalyptus brownii (22, 100%), Corymbia dallachiana (1, 50%), Eucalyptus crebra (2, 30%), Eucalyptus leptophleba (25, 10%), Eucalyptus orgadophila (1, 10%), Grevillea striata (3, 10%)*

**Stratum: T2**

Height avg. = 6.3m, range 3-8m, 8 sites

Crown cover avg. = 2.3%, range 0.0-7.9%, 8 sites

Stem density/ha avg. = 84, range 20-240, 5 sites

*Dominant species (relative cover, frequency): Atalaya hemiglauca (93, 30%), Eucalyptus brownii (79, 50%)*

*Frequent species (cover, frequency): Eucalyptus brownii (1, 50%), Atalaya hemiglauca (3, 30%), Grevillea striata (20%), Acacia salicina (1, 10%), Terminalia oblongata (1, 10%)*

Dominant species: Relative cover (mean of cover of species / total cover of all species in that stratum for all values > zero) and frequency (percent of total sites) ordered by decreasing relative abundance. Up to five most dominant species with frequency > 20% listed for each stratum.

Frequent species: Cover (mean of all values > zero) and frequency (percent of total sites) of all species occurring in more than 5% of sites ordered by decreasing frequency. Ground layer species are listed as either graminoid or forb.

Naturalised species have an asterisk (\*) after the name. indet. after listed name = indeterminate species or genus

**Stratum: S1**

Height avg. = 2.1m, range 1-5m, 8 sites

Crown cover avg. = 9.7%, range 0.0-38.0%, 8 sites

Stem density/ha avg. = 375, range 80-740, 4 sites

*Dominant species (relative cover, frequency):* *Carissa lanceolata* (59, 40%), *Grevillea striata* (36, 30%), *Atalaya hemiglauca* (32, 40%)

*Frequent species (cover, frequency):* *Atalaya hemiglauca* (3, 40%), *Carissa lanceolata* (5, 40%), *Grevillea striata* (3, 30%), *Acacia farnesiana*\* (20%), *Acacia salicina* (20%), *Capparis lasiantha* (20%), *Eucalyptus brownii* (1, 20%), *Maytenus cunninghamii* (20%), *Acacia cowleana* (10%), *Acacia victoriae* (2, 10%), *Archidendropsis basaltica* (10%), *Carissa ovata* (1, 10%), *Corymbia dallachiana* (10%), *Cryptostegia grandiflora*\* (2, 10%), *Dolichandrone heterophylla* (10%), *Eremophila longifolia* (10%), *Eremophila mitchellii* (1, 10%), *Eucalyptus crebra* (10%), *Grewia retusifolia* (10%), *Lysiphellum indet.* (10%), *Psyrax oleifolia* (10%), *Sida hackettiana* (10%), *Solanum esuriale* (10%), *Ventilago viminalis* (10%)

**Stratum: S2**

Height avg. = 1.0m, 1 site

Crown cover avg. = 0.0%, 1 site

Stem density/ha avg. = 240, 1 site

*Frequent species (cover, frequency):* *Atalaya hemiglauca* (10%), *Carissa lanceolata* (10%)

**Stratum: G**

Height avg. = 0.5m, range 0.2-1.2m, 7 sites

PFC avg. = 55.7%, range 0-100%, 7 sites

*Dominant species (relative cover, frequency):* *Bothriochloa pertusa*\* (39, 30%), *Urochloa mosambicensis*\* (25, 30%), *Heteropogon contortus* (14, 40%), *Themeda triandra* (11, 30%), *Fimbristylis dichotoma* (3, 30%)

*Frequent species (cover, frequency):* **GRAMINOIDS:** *Cyperus fulvus* (1, 40%), *Heteropogon contortus* (9, 40%), *Bothriochloa pertusa*\* (25, 30%), *Echinochloa colona*\* (30%), *Fimbristylis dichotoma* (30%), *Themeda triandra* (9, 30%), *Urochloa mosambicensis*\* (26, 30%), *Aristida calycina* (1, 20%), *Aristida calycina* var. *calycina* (20%), *Aristida latifolia* (5, 20%), *Bothriochloa indet.* (20, 20%), *Chrysopogon fallax* (2, 20%), *Cyperus indet.* (20%), *Dichanthium fecundum* (6, 20%), *Panicum effusum* var. *effusum* (20%), *Sporobolus indet.* (20%), *Alloteropsis semialata* (10%), *Aristida indet.* (15, 10%), *Aristida ingrata* (10%), *Aristida jerichoensis* var. *jerichoensis* (10%), *Bothriochloa bladhii* (5, 10%), *Bothriochloa decipiens* (10, 10%), *Bothriochloa decipiens* var. *cloncurrans* (5, 10%), *Bothriochloa ewartiana* (5, 10%), *Chloris pectinata* (6, 10%), *Chloris ventricosa* (10%), *Chloris virgata*\* (5, 10%), *Cyperus difformis* (10%), *Cyperus gracilis* (10%), *Cyperus iria* (10%), *Cyperus scariosus* (10%), *Dactyloctenium radulans* (10%), *Dichanthium sericeum* (7, 10%), *Digitaria brownii* (10%), *Enneapogon polyphyllus* (10%), *Eragrostis exigua* (5, 10%), *Eragrostis indet.* (10%), *Eragrostis lacunaria* (10%), *Eragrostis sororia* (10%), *Eragrostis tenellula* (10%), *Eriochloa indet.* (4, 10%), *Eriochloa procera* (10%), *Eulalia aurea* (10%), *Fimbristylis indet.* (6, 10%), *Iseilema vaginiflorum* (10%), *Melinis repens*\* (10%), *Panicum effusum* (1, 10%), *Pennisetum ciliare*\* (5, 10%), *Poaceae indet.* (10%), *Sporobolus australasicus* (10%), *Tripogon loliiformis* (10%)

**FORBS:** *Alternanthera micrantha* (40%), *Grewia retusifolia* (40%), *Brunoniella australis* (30%), *Indigofera linifolia* (30%), *Sida hackettiana* (1, 30%), *Camptacra indet.* (20%), *Desmodium campylocaulon* (20%), *Gomphrena celosoides*\* (20%), *Indigofera linnaei* (1, 20%), *Malvastrum americanum* var. *americanum*\* (1, 20%), *Phyllanthus maderaspatensis* (20%), *Pterocaulon redolens* (1, 20%), *Sida spinosa*\* (1, 20%), *Stylosanthes scabra*\* (20%), *Achyranthes aspera* (10%), *Alternanthera nana* (10%), *Alternanthera nodiflora* (10%), *Ammannia multiflora* (2, 10%), *Amyema bifurcata* (10%), *Asteraceae indet.* (10%), *Bacopa floribunda* (10%), *Blumea diffusa* (10%), *Brunoniella indet.* (1, 10%), *Chamaecrista mimosoides* (10%), *Chamaecrista nomame* var. *nomame* (10%), *Chamaesyce drummondii* (10%), *Crotalaria montana* (10%), *Desmodium indet.* (2, 10%), *Evolvulus alsinoides* (10%), *Fabaceae indet.* (10%), *Glycine clandestina* (10%), *Grevillea parallela* (10%), *Hybanthus enneaspermus* (10%), *Indigofera colutea* (10%), *Malvastrum coromandelianum* (10%), *Neptunia gracilis* (1, 10%), *Polygala linariifolia* (10%), *Polymeria ambigua* (10%), *Polymeria calycina* (4, 10%), *Polymeria longifolia* (10%), *Polymeria marginata* (10%), *Pterocaulon indet.* (10%), *Pterocaulon sphacelatum* (10%), *Rhynchosia minima* (5, 10%), *Salsola kali* (10%), *Sauropus trachyspermus* (10%), *Sida atherophora* subsp. *atherophora* (10%), *Stylosanthes indet.* (10%), *Ventilago viminalis* (10%), *Waltheria indica* (10%), *Wedelia spilanthisoides* (10%)

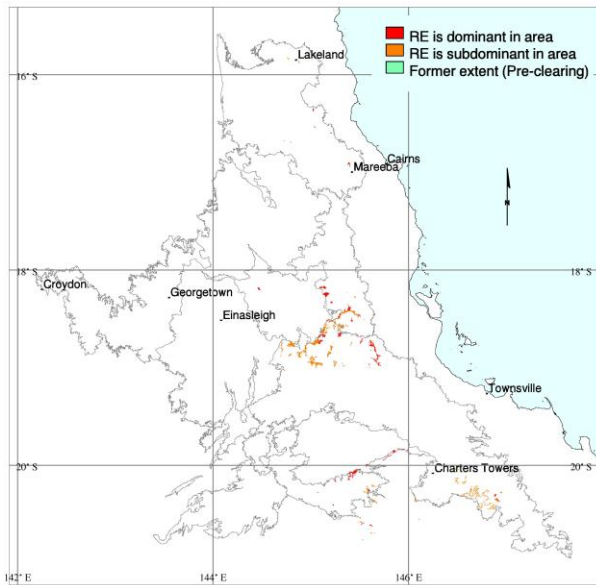
Dominant species: Relative cover (mean of cover of species / total cover of all species in that stratum for all values > zero) and frequency (percent of total sites) ordered by decreasing relative abundance. Up to five most dominant species with frequency > 20% listed for each stratum.

Frequent species: Cover (mean of all values > zero) and frequency (percent of total sites) of all species occurring in more than 5% of sites ordered by decreasing frequency. Ground layer species are listed as either graminoid or forb.

Naturalised species have an asterisk (\*) after the name. indet. after listed name = indeterminate species or genus



**Eucalyptus platyphylla +/- Eucalyptus spp. +/- Corymbia spp. woodland on alluvial plains**



G.W. Wilson

Pre-clearing area (ha), remnant area (ha) and per cent remaining: 20,084 18,860 94%

Species recorded: Total: 99; woody: 11; ground: 90; Avg. spp./site: 32.3; std dev.: 13.0, 4 site(s)

Basal area: Avg./site: 5.3 m<sup>2</sup>/ha, range: 4.0 - 6 m<sup>2</sup>/ha, std. deviation: 1 m<sup>2</sup>/ha, 4 site(s)

Structural formation: Woodland: 75%; open-woodland: 25%, 4 site(s)

Representative sites: 26273, 26618, 26619, 26926.

**Stratum: T1**

Height avg. = 16.5m, range 14-20m, 4 sites

Crown cover avg. = 35.2%, range 22.5-46.5%, 4 sites

Stem density/ha avg. = 188, range 120-270, 4 sites

*Dominant species (relative cover, frequency): Eucalyptus platyphylla (76, 100%), Corymbia tessellaris (41, 50%), Corymbia clarksoniana (15, 25%)*

*Frequent species (cover, frequency): Eucalyptus platyphylla (24, 100%), Corymbia tessellaris (12, 50%), Corymbia clarksoniana (2, 25%)*

**Stratum: T2**

Height avg. = 11.0m, range 10-12m, 2 sites

Crown cover avg. = 0.8%, range 0.0-1.6%, 2 sites

Stem density/ha avg. = 30, range 20-40, 2 sites

*Dominant species (relative cover, frequency): Eucalyptus platyphylla (100, 25%), Corymbia tessellaris (100, 25%)*

*Frequent species (cover, frequency): Corymbia tessellaris (25%), Eucalyptus platyphylla (25%)*

Dominant species: Relative cover (mean of cover of species / total cover of all species in that stratum for all values > zero) and frequency (percent of total sites) ordered by decreasing relative abundance. Up to five most dominant species with frequency > 20% listed for each stratum.

Frequent species: Cover (mean of all values > zero) and frequency (percent of total sites) of all species occurring in more than 5% of sites ordered by decreasing frequency. Ground layer species are listed as either graminoid or forb.

Naturalised species have an asterisk (\*) after the name. indet. after listed name = indeterminate species or genus

**Stratum: S1**

Height avg. = 2.2m, range 1.5-3m, 3 sites

Crown cover avg. = 0.0%, range 0.0-0.0%, 3 sites

Stem density/ha avg. = 180, range 20-480, 3 sites

*Dominant species (relative cover, frequency): Sida hackettiana (57, 50%), Petalostigma pubescens (33, 25%), Corymbia tessellaris (33, 25%), Maytenus cunninghamii (17, 50%), Wrightia saligna (17, 25%)*

*Frequent species (cover, frequency): Maytenus cunninghamii (50%), Sida hackettiana (1, 50%), Capparis indet. (25%), Corymbia tessellaris (25%), Eucalyptus platyphylla (25%), Grevillea indet. (25%), Lantana camara var. camara (25%), Petalostigma pubescens (25%), Planchonia careya (25%), Wrightia saligna (25%)*

**Stratum: G**

Height avg. = 0.9m, range 0.8-1m, 4 sites

PFC avg. = 46.5%, range 30-68%, 4 sites

*Dominant species (relative cover, frequency): Dichanthium indet. (61, 25%), Sarga plumosum (56, 25%), Urochloa mosambicensis\* (24, 25%), Heteropogon contortus (22, 100%), Fabaceae indet. (16, 25%)*

*Frequent species (cover, frequency): GRAMINOIDS: Heteropogon contortus (8, 100%), Fimbristylis bisumbellata (2, 50%), Melinis repens\* (2, 50%), Panicum indet. (1, 50%), Perotis rara (50%), Aristida calycina var. calycina (25%), Aristida indet. (1, 25%), Arundinella indet. (25%), Bothriochloa decipiens var. cloncurrrens (1, 25%), Capillipedium indet. (25%), Cyperus dietrichiae var. brevibracteatus (1, 25%), Cyperus fulvus (25%), Cyperus indet. (25%), Dactyloctenium radulans (25%), Dichanthium indet. (42, 25%), Digitaria ciliaris\* (1, 25%), Digitaria nematostachya (1, 25%), Enteropogon indet. (9, 25%), Eragrostis brownii (1, 25%), Eragrostis indet. (4, 25%), Eriochloa procera (5, 25%), Heteropogon triticeus (25%), Mnesithea rottboellioides (2, 25%), Panicum robustum (25%), Paspalum indet. (6, 25%), Poaceae indet. (25%), Sarga plumosum (20, 25%), Scleria mackaviensis (25%), Sporobolus laxus (25%), Themeda quadrivalvis\* (1, 25%), Themeda triandra (25%), Urochloa mosambicensis\* (10, 25%), Urochloa subquadripara\* (2, 25%)*

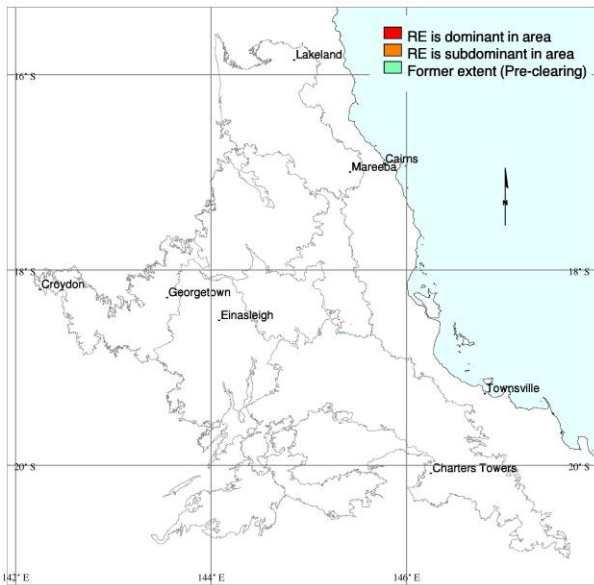
*FORBS: Grewia retusifolia (1, 100%), Sida hackettiana (2, 100%), Boerhavia dominii (50%), Crotalaria mitchellii subsp. mitchellii (50%), Cyanthillium cinereum (50%), Emilia sonchifolia\* (50%), Glycine tomentella (2, 50%), Hibiscus meraukensis (50%), Hybanthus enneaspermus (50%), Ipomoea plebeia (50%), Melhania oblongifolia (1, 50%), Spermacece brachystema (50%), Stylosanthes scabra\* (50%), Zornia muelleriana subsp. muelleriana (50%), Acanthospermum hispidum\* (25%), Ageratum conyzoides (25%), Bidens bipinnata\* (25%), Breynia indet. (25%), Breynia oblongifolia (25%), Calotis cuneata var. cuneata (25%), Capparis lasiantha (25%), Chamaecrista absus var. absus (25%), Chamaesyce hirta\* (25%), Commelina lanceolata (25%), Conyza sumatrensis\* (25%), Crotalaria calycina (25%), Crotalaria gorensis\* (25%), Cucumis anguria var. anguria\* (25%), Desmodium filiforme (25%), Evolvulus alsinoides (25%), Evolvulus alsinoides var. decumbens (25%), Fabaceae indet. (5, 25%), Galactia tenuiflora forma sericea (1, 25%), Indigofera brevidens (25%), Indigofera hirsuta (25%), Ipomoea polymorpha (25%), Lysiphyllum indet. (25%), Malvastrum americanum\* (25%), Maytenus cunninghamii (25%), Myoporium indet. (25%), Pandorea indet. (25%), Pterocaulon indet. (25%), Pterocaulon sphacelatum (25%), Rhynchosia minima var. minima (25%), Richardia brasiliensis\* (25%), Rostellularia adscendens var. juncea (25%), Rostellularia indet. (1, 25%), Sida rhombifolia\* (1, 25%), Sida spinosa\* (25%), Solanum ellipticum (25%), Stylosanthes indet. (1, 25%), Tribulopsis solandri (25%), Tridax procumbens\* (25%), Urena lobata\* (1, 25%), Xanthium occidentale\* (25%), Zornia dyctiocarpa var. filifolia (25%), Zornia indet. (1, 25%)*

Dominant species: Relative cover (mean of cover of species / total cover of all species in that stratum for all values > zero) and frequency (percent of total sites) ordered by decreasing relative abundance. Up to five most dominant species with frequency > 20% listed for each stratum.

Frequent species: Cover (mean of all values > zero) and frequency (percent of total sites) of all species occurring in more than 5% of sites ordered by decreasing frequency. Ground layer species are listed as either graminoid or forb.

Naturalised species have an asterisk (\*) after the name. indet. after listed name = indeterminate species or genus

**Eucalyptus platyphylla woodland on depressions in Tertiary plains**



M. Newton

Pre-clearing area (ha), remnant area (ha) and per cent remaining: 399 398 100%

Species recorded: Total: 13; woody: 4; ground: 10; Avg. spp./site: 13.0; std dev.: 0.0, 1 site(s)

Basal area: Avg./site: 3.1 m<sup>2</sup>/ha, range: 3.1 - 3 m<sup>2</sup>/ha, std. deviation: 0 m<sup>2</sup>/ha, 1 site(s)

Structural formation: Open-woodland: 100%, 1 site(s)

Representative sites: 37326.

**Stratum: T1**

Height avg. = 20.0m, 1 site

Crown cover avg. = 13.8%, 1 site

Stem density/ha avg. = 80, 1 site

*Dominant species (relative cover, frequency): Eucalyptus platyphylla (58, 100%), Eucalyptus tereticornis (41, 100%)*

*Frequent species (cover, frequency): Eucalyptus crebra (100%), Eucalyptus platyphylla (6, 100%), Eucalyptus tereticornis (4, 100%)*

**Stratum: S1**

Height avg. = 4.0m, 1 site

Crown cover avg. = 0.6%, 1 site

Stem density/ha avg. = 20, 1 site

*Dominant species (relative cover, frequency): Melaleuca viridiflora (100, 100%)*

*Frequent species (cover, frequency): Melaleuca viridiflora (100%)*

Dominant species: Relative cover (mean of cover of species / total cover of all species in that stratum for all values > zero) and frequency (percent of total sites) ordered by decreasing relative abundance. Up to five most dominant species with frequency > 20% listed for each stratum.

Frequent species: Cover (mean of all values > zero) and frequency (percent of total sites) of all species occurring in more than 5% of sites ordered by decreasing frequency. Ground layer species are listed as either graminoid or forb.

Naturalised species have an asterisk (\*) after the name. indet. after listed name = indeterminate species or genus

**Stratum: G**

Height avg. = 0.6m, 1 site

PFC avg. = 73.0%, 1 site

*Dominant species (relative cover, frequency):* *Eleocharis dulcis* (51, 100%), *Leersia hexandra* (23, 100%), *Philydrum lanuginosum* (8, 100%), *Cyperus haspan* (8, 100%), *Myriophyllum indet.* (4, 100%)

*Frequent species (cover, frequency):* GRAMINOIDS: *Arundinella nepalensis* (100%), *Cyperus haspan* (6, 100%), *Eleocharis dulcis* (37, 100%), *Leersia hexandra* (17, 100%)

FORBS: *Caldesia oligococca* (1, 100%), *Ludwigia octovalvis* (2, 100%), *Monochoria cyanea* (1, 100%), *Myriophyllum indet.* (3, 100%), *Nymphoides indica* (100%), *Philydrum lanuginosum* (6, 100%)

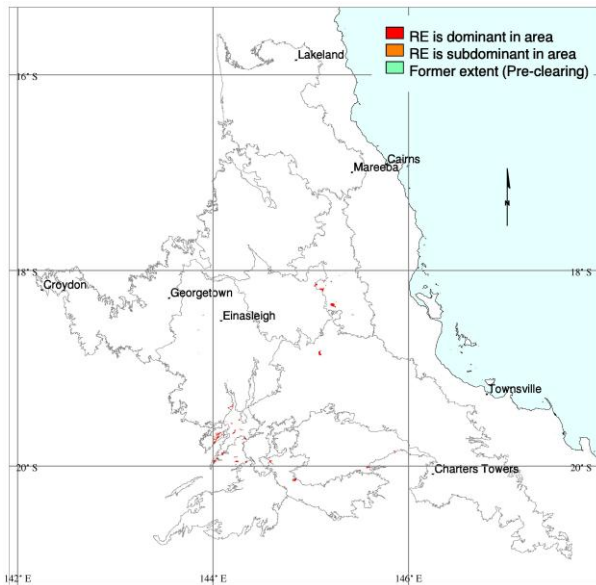
---

Dominant species: Relative cover (mean of cover of species / total cover of all species in that stratum for all values > zero) and frequency (percent of total sites) ordered by decreasing relative abundance. Up to five most dominant species with frequency > 20% listed for each stratum.

Frequent species: Cover (mean of all values > zero) and frequency (percent of total sites) of all species occurring in more than 5% of sites ordered by decreasing frequency. Ground layer species are listed as either graminoid or forb.

Naturalised species have an asterisk (\*) after the name. indet. after listed name = indeterminate species or genus

**Wetlands and seasonally inundated grasslands with a fringing open-woodland of mixed *Eucalyptus* spp. on Tertiary surfaces**



M. Newton

Pre-clearing area (ha), remnant area (ha) and per cent remaining: 11,877 11,614 98%

Species recorded: Total: 22; woody: 6; ground: 18; Avg. spp./site: 8.0; std dev.: 3.6, 3 site(s)

Basal area: Avg./site: 3.2 m<sup>2</sup>/ha, range: 0.5 - 5 m<sup>2</sup>/ha, std. deviation: 2 m<sup>2</sup>/ha, 3 site(s)

Structural formation: Open-woodland: 67%; open-sedgeland: 33%, 3 site(s)

Representative sites: 26700, 37310, 37311.

**Stratum: E**

Height avg. = 22.0m, 1 site

Crown cover avg. = 0.6%, 1 site

*Dominant species (relative cover, frequency): Eucalyptus tereticornis (100, 33%)*

*Frequent species (cover, frequency): Eucalyptus tereticornis (33%)*

**Stratum: T1**

Height avg. = 18.0m, range 10-22m, 3 sites

Crown cover avg. = 8.3%, range 0.6-18.1%, 3 sites

Stem density/ha avg. = 80, range 80-80, 2 sites

*Dominant species (relative cover, frequency): Eucalyptus platyphylla (86, 33%), Corymbia tessellaris (73, 33%), Eucalyptus tereticornis (27, 33%), Corymbia polycarpa (14, 33%)*

*Frequent species (cover, frequency): Corymbia polycarpa (2, 33%), Corymbia tessellaris (17, 33%), Eucalyptus platyphylla (14, 33%), Eucalyptus tereticornis (6, 33%)*

Dominant species: Relative cover (mean of cover of species / total cover of all species in that stratum for all values > zero) and frequency (percent of total sites) ordered by decreasing relative abundance. Up to five most dominant species with frequency > 20% listed for each stratum.

Frequent species: Cover (mean of all values > zero) and frequency (percent of total sites) of all species occurring in more than 5% of sites ordered by decreasing frequency. Ground layer species are listed as either graminoid or forb.

Naturalised species have an asterisk (\*) after the name. indet. after listed name = indeterminate species or genus

**Stratum: T2**

Height avg. = 6.0m, 1 site

Crown cover avg. = 15.9%, 1 site

Stem density/ha avg. = 80, 1 site

*Dominant species (relative cover, frequency): Melaleuca bracteata (50, 33%), Corymbia tessellaris (50, 33%)*

*Frequent species (cover, frequency): Corymbia tessellaris (33%), Melaleuca bracteata (33%)*

**Stratum: S1**

Height avg. = 3.0m, range 2.5-3.5m, 2 sites

Crown cover avg. = 0.3%, range 0.0-0.6%, 2 sites

Stem density/ha avg. = 40, 1 site

*Dominant species (relative cover, frequency): Melaleuca viridiflora (100, 33%), Corymbia tessellaris (100, 33%)*

*Frequent species (cover, frequency): Corymbia tessellaris (33%), Melaleuca viridiflora (33%)*

**Stratum: G**

Height avg. = 0.3m, range 0.1-0.6m, 3 sites

PFC avg. = 60.3%, range 56-63%, 3 sites

*Dominant species (relative cover, frequency): Poaceae indet. (69, 33%), Schoenoplectus erectus\* (58, 33%), Nymphoides indica (32, 33%), Myriophyllum indet. (29, 33%), Cyperaceae indet. (27, 33%)*

*Frequent species (cover, frequency): GRAMINOIDS: Leersia hexandra (8, 67%), Pseudoraphis spinescens (5, 67%), Cynodon dactylon (3, 33%), Cyperaceae indet. (20, 33%), Cyperus gracilis (3, 33%), Cyperus scariosus (33%), Eleocharis dulcis (14, 33%), Eragrostis elongata (1, 33%), Poaceae indet. (51, 33%), Schoenoplectus erectus\* (36, 33%)*

*FORBS: Alternanthera brasiliana\* (1, 33%), Ludwigia peploides (33%), Marsilea drummondii (33%), Marsilea indet. (2, 33%), Marsilea mutica (33%), Myriophyllum indet. (18, 33%), Nymphoides indica (18, 33%), Potamogeton tricarinatus (33%)*

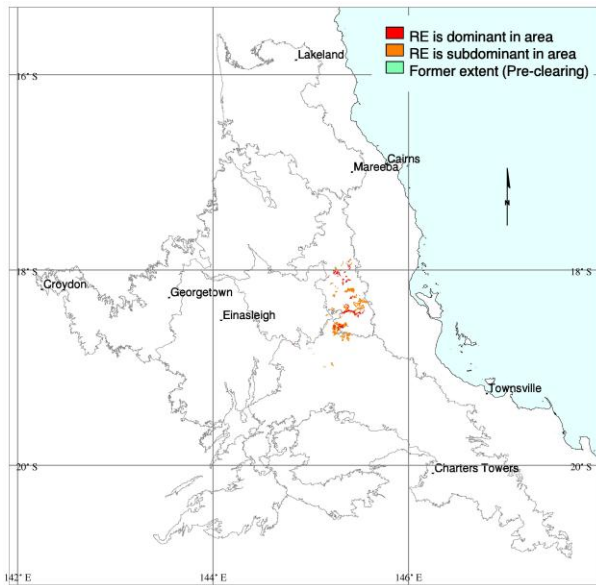
Dominant species: Relative cover (mean of cover of species / total cover of all species in that stratum for all values > zero) and frequency (percent of total sites) ordered by decreasing relative abundance. Up to five most dominant species with frequency > 20% listed for each stratum.

Frequent species: Cover (mean of all values > zero) and frequency (percent of total sites) of all species occurring in more than 5% of sites ordered by decreasing frequency. Ground layer species are listed as either graminoid or forb.

Naturalised species have an asterisk (\*) after the name. indet. after listed name = indeterminate species or genus



**Eucalyptus moluccana woodland on alluvial deposits**



M. Newton

Pre-clearing area (ha), remnant area (ha) and per cent remaining: 13,211 12,962 98%

Species recorded: Total: 72; woody: 10; ground: 64; Avg. spp./site: 21.8; std dev.: 6.2, 4 site(s)

Basal area: Avg./site: 8.8 m<sup>2</sup>/ha, range: 6.8 - 12 m<sup>2</sup>/ha, std. deviation: 2 m<sup>2</sup>/ha, 4 site(s)

Structural formation: Woodland: 50%; open-woodland: 25%; open-forest: 25%, 4 site(s)

Representative sites: 26044, 26274, 37328, 37935.

**Stratum: T1**

Height avg. = 20.5m, range 19-22m, 4 sites

Crown cover avg. = 30.9%, range 7.9-66.2%, 4 sites

Stem density/ha avg. = 190, range 80-320, 4 sites

*Dominant species (relative cover, frequency): Eucalyptus moluccana (100, 100%)*

*Frequent species (cover, frequency): Eucalyptus moluccana (39, 100%), Eucalyptus crebra (50%), Eucalyptus platyphylla (25%)*

**Stratum: T2**

Height avg. = 5.0m, 1 site

Crown cover avg. = 0.0%, 1 site

Stem density/ha avg. = 40, 1 site

*Dominant species (relative cover, frequency): Eucalyptus moluccana (100, 25%)*

*Frequent species (cover, frequency): Eucalyptus moluccana (25%)*

Dominant species: Relative cover (mean of cover of species / total cover of all species in that stratum for all values > zero) and frequency (percent of total sites) ordered by decreasing relative abundance. Up to five most dominant species with frequency > 20% listed for each stratum.

Frequent species: Cover (mean of all values > zero) and frequency (percent of total sites) of all species occurring in more than 5% of sites ordered by decreasing frequency. Ground layer species are listed as either graminoid or forb.

Naturalised species have an asterisk (\*) after the name. indet. after listed name = indeterminate species or genus



**Stratum: S1**

Height avg. = 2.0m, range 0.8-3m, 4 sites

Crown cover avg. = 0.4%, range 0.0-0.6%, 4 sites

Stem density/ha avg. = 145, range 40-220, 4 sites

*Dominant species (relative cover, frequency):* *Acacia decora* (97, 25%), *Sida hackettiana* (91, 25%), *Petalostigma pubescens* (50, 25%), *Alphitonia excelsa* (50, 25%), *Acacia crassicarpa* (50, 25%)

*Frequent species (cover, frequency):* *Eucalyptus moluccana* (75%), *Acacia crassicarpa* (25%), *Acacia decora* (1, 25%), *Acacia simsii* (25%), *Alphitonia excelsa* (25%), *Cassia brewsteri* var. *brewsteri* (25%), *Petalostigma pubescens* (25%), *Sida hackettiana* (1, 25%)

**Stratum: G**

Height avg. = 0.5m, range 0.4-0.8m, 4 sites

PFC avg. = 63.5%, range 50-76%, 4 sites

*Dominant species (relative cover, frequency):* *Bothriochloa indet.* (75, 25%), *Bothriochloa decipiens* (37, 50%), *Chrysopogon fallax* (31, 25%), *Sporobolus jacquemontii*\* (17, 25%), *Eremochloa bimaculata* (14, 25%)

*Frequent species (cover, frequency):* **GRAMINOIDS:** *Heteropogon contortus* (4, 75%), *Bothriochloa decipiens* (28, 50%), *Cyperus fulvus* (50%), *Cyperus gracilis* (4, 50%), *Dichanthium indet.* (2, 50%), *Eragrostis brownii* (5, 50%), *Fimbristylis dichotoma* (2, 50%), *Panicum effusum* (1, 50%), *Themeda triandra* (1, 50%), *Alloteropsis semialata* (25%), *Aristida indet.* (25%), *Aristida queenslandica* var. *queenslandica* (2, 25%), *Aristida superpendens* (25%), *Arundinella nepalensis* (25%), *Bothriochloa indet.* (40, 25%), *Chrysopogon fallax* (24, 25%), *Cyperus difformis* (25%), *Cyperus enervis* (1, 25%), *Echinochloa colona*\* (25%), *Eragrostis schultzei* (6, 25%), *Eremochloa bimaculata* (11, 25%), *Fimbristylis depauperata* (25%), *Fimbristylis microcarya* (25%), *Leptochloa indet.* (25%), *Paspalidium distans* (7, 25%), *Paspalidium indet.* (25%), *Schizachyrium indet.* (25%), *Setaria pumila* subsp. *pallidifusca*\* (5, 25%), *Sporobolus indet.* (25%), *Sporobolus jacquemontii*\* (13, 25%), *Themeda quadrivalvis*\* (25%), *Urochloa subquadripara*\* (25%)

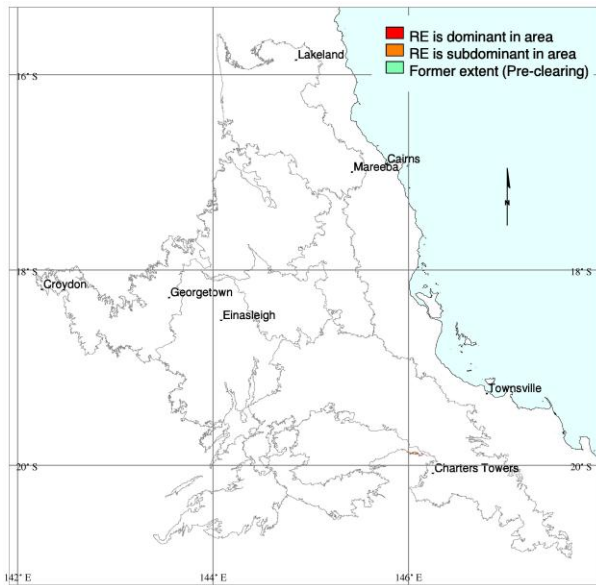
**FORBS:** *Grewia retusifolia* (3, 50%), *Sida cordifolia*\* (50%), *Acacia crassicarpa* (25%), *Acanthospermum hispidum*\* (25%), *Alternanthera nana* (25%), *Ammannia multiflora* (25%), *Brunoniella acaulis* (25%), *Brunoniella australis* (25%), *Camptacra barbata* (25%), *Camptacra indet.* (25%), *Chamaecrista mimosoides* (25%), *Cyanthillium cinereum* (25%), *Epaltes australis* (25%), *Galactia tenuiflora* (25%), *Indigofera indet.* (25%), *Malvastrum americanum* var. *americanum*\* (25%), *Phyllanthus simplex* (25%), *Phyllanthus virgatus* (25%), *Praxelis clematidea*\* (25%), *Pterocaulon redolens* (25%), *Pycnospora lutescens* (25%), *Rhynchosia minima* (25%), *Rostellularia adscendens* (25%), *Sida rhombifolia*\* (25%), *Spermacoce latifolia*\* (25%), *Stylosanthes guianensis* var. *guianensis*\* (25%), *Stylosanthes scabra*\* (25%), *Stylosanthes viscosa*\* (25%), *Urarica picta* (25%), *Urena lobata*\* (25%), *Wedelia spilanthisoides* (25%), *Zornia muriculata* (25%)

Dominant species: Relative cover (mean of cover of species / total cover of all species in that stratum for all values > zero) and frequency (percent of total sites) ordered by decreasing relative abundance. Up to five most dominant species with frequency > 20% listed for each stratum.

Frequent species: Cover (mean of all values > zero) and frequency (percent of total sites) of all species occurring in more than 5% of sites ordered by decreasing frequency. Ground layer species are listed as either graminoid or forb.

Naturalised species have an asterisk (\*) after the name. indet. after listed name = indeterminate species or genus

**Acacia cambagei +/- A. harpophylla woodland on cracking clay soils**



Pre-clearing area (ha), remnant area (ha) and per cent remaining:    1,664        769        46%

Species recorded:        Total: 38; woody: 12; ground: 27; Average species per site and standard deviation not available

Basal area:                Avg./site: 7.4 m<sup>2</sup>/ha, range: 5.0 - 10 m<sup>2</sup>/ha, std. deviation: 2 m<sup>2</sup>/ha, 2 site(s)

Structural formation:    Woodland: 50%; open-woodland: 50%, 2 site(s)

Representative sites:    26531, 27114.

**Stratum: T1**

Height avg. = 16.0m, range 14-18m, 2 sites  
 Crown cover avg. = 29.1%, range 13.8-44.4%, 2 sites  
 Stem density/ha avg. = 140, 1 site  
*Dominant species (relative cover, frequency): Acacia cambagei (97, 100%), Acacia harpophylla (6, 50%)*  
*Frequent species (cover, frequency): Acacia cambagei (27, 100%), Acacia harpophylla (2, 50%), Amyema quandang (50%), Dendrobium canaliculatum (50%), Terminalia oblongata (50%)*

**Stratum: T2**

Height avg. = 6.0m, range 6-6m, 2 sites  
 Crown cover avg. = 3.1%, range 0.0-6.1%, 2 sites  
 Stem density/ha avg. = 80, 1 site  
*Dominant species (relative cover, frequency): Lysiphyllum carronii (54, 100%), Eremophila mitchellii (25, 50%), Cryptostegia grandiflora\* (25, 50%), Acacia cambagei (25, 50%), Terminalia oblongata (17, 50%)*  
*Frequent species (cover, frequency): Lysiphyllum carronii (5, 100%), Acacia cambagei (50%), Cryptostegia grandiflora\* (50%), Eremophila mitchellii (50%), Terminalia oblongata (2, 50%)*

Dominant species: Relative cover (mean of cover of species / total cover of all species in that stratum for all values > zero) and frequency (percent of total sites) ordered by decreasing relative abundance. Up to five most dominant species with frequency > 20% listed for each stratum.

Frequent species: Cover (mean of all values > zero) and frequency (percent of total sites) of all species occurring in more than 5% of sites ordered by decreasing frequency. Ground layer species are listed as either graminoid or forb.

Naturalised species have an asterisk (\*) after the name.    indet. after listed name = indeterminate species or genus

**Stratum: S1**

Height avg. = 1.1m, range 1-1.2m, 2 sites

Crown cover avg. = 3.1%, range 0.0-6.1%, 2 sites

Stem density/ha avg. = 300, 1 site

*Dominant species (relative cover, frequency): Carissa lanceolata (56, 100%), Terminalia indet. (13, 50%), Santalum lanceolatum (13, 50%), Lysiphyllum carronii (13, 50%), Eremophila mitchellii (13, 50%)*

*Frequent species (cover, frequency): Carissa lanceolata (3, 100%), Acacia cambagei (50%), Atalaya hemiglauca (50%), Cryptostegia grandiflora\* (50%), Eremophila mitchellii (50%), Lysiphyllum carronii (50%), Santalum lanceolatum (50%), Terminalia indet. (50%)*

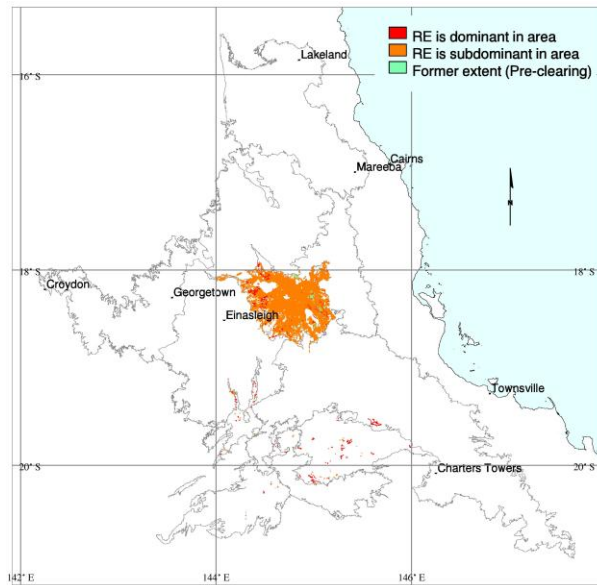
---

Dominant species: Relative cover (mean of cover of species / total cover of all species in that stratum for all values > zero) and frequency (percent of total sites) ordered by decreasing relative abundance. Up to five most dominant species with frequency > 20% listed for each stratum.

Frequent species: Cover (mean of all values > zero) and frequency (percent of total sites) of all species occurring in more than 5% of sites ordered by decreasing frequency. Ground layer species are listed as either graminoid or forb.

Naturalised species have an asterisk (\*) after the name. indet. after listed name = indeterminate species or genus

**Melaleuca bracteata dominated low woodland on swamps & springs on basalts**



C. Kahler

Pre-clearing area (ha), remnant area (ha) and per cent remaining: 62,459 61,179 98%

Species recorded: Total: 99; woody: 24; ground: 78; Avg. spp./site: 20.8; std dev.: 6.3, 6 site(s)

Basal area: Avg./site: 15.1 m<sup>2</sup>/ha, range: 4.0 - 44 m<sup>2</sup>/ha, std. deviation: 11 m<sup>2</sup>/ha, 9 site(s)

Structural formation: Low woodland: 33%; low open-forest: 33%; open-forest: 11%; low closed-forest: 11%; closed-forest: 11%, 9 site(s)

Representative sites: 26086, 26088, 26292, 26311, 26744, 26932, 26935, 26978, 26980.

**Stratum: T1**

Height avg. = 11.6m, range 6-30m, 9 sites

Crown cover avg. = 48.4%, range 15.9-95.9%, 9 sites

Stem density/ha avg. = 612, range 80-2400, 5 sites

*Dominant species (relative cover, frequency): Melaleuca bracteata (96, 89%), Ficus opposita (25, 22%)*

*Frequent species (cover, frequency): Melaleuca bracteata (50, 89%), Ficus opposita (29, 22%), Casuarina cunninghamiana (58, 11%), Terminalia indet. (11%), Terminalia sericocarpa (46, 11%)*

**Stratum: T2**

Height avg. = 6.3m, range 4-12m, 4 sites

Crown cover avg. = 30.1%, range 0.0-66.2%, 4 sites

Stem density/ha avg. = 640, range 320-960, 2 sites

*Dominant species (relative cover, frequency): Melaleuca bracteata (79, 44%)*

*Frequent species (cover, frequency): Melaleuca bracteata (16, 44%), Alectryon oleifolius (6, 11%), Diospyros humilis (11%), Ficus opposita (6, 11%), Psydrax oleifolia (11%), Santalum lanceolatum (11%)*

Dominant species: Relative cover (mean of cover of species / total cover of all species in that stratum for all values > zero) and frequency (percent of total sites) ordered by decreasing relative abundance. Up to five most dominant species with frequency > 20% listed for each stratum.

Frequent species: Cover (mean of all values > zero) and frequency (percent of total sites) of all species occurring in more than 5% of sites ordered by decreasing frequency. Ground layer species are listed as either graminoid or forb.

Naturalised species have an asterisk (\*) after the name. indet. after listed name = indeterminate species or genus

**Stratum: S1**

Height avg. = 1.6m, range 1-3m, 7 sites

Crown cover avg. = 6.2%, range 0.6-18.1%, 7 sites

Stem density/ha avg. = 615, range 20-1980, 4 sites

*Dominant species (relative cover, frequency): Melaleuca bracteata (61, 44%), Cryptostegia grandiflora\* (59, 44%), Exocarpos latifolius (7, 22%), Ficus opposita (2, 22%)*

*Frequent species (cover, frequency): Cryptostegia grandiflora\* (7, 44%), Melaleuca bracteata (1, 44%), Exocarpos latifolius (22%), Ficus opposita (22%), Actephila indet. (11%), Alectryon oleifolius (1, 11%), Carissa indet. (11%), Carissa lanceolata (11%), Cayratia clematidea (11%), Conyza canadensis var. pusilla\* (11%), Diospyros humilis (1, 11%), Ficus indet. (11%), Flueggea virosa subsp. melanthesoides (11%), Indigofera glandulosa (11%), Mallotus indet. (1, 11%), Maytenus cunninghamii (11%), Polymeria pusilla (11%), Solanum seaforthianum\* (11%), Stephania japonica (11%), Terminalia indet. (11%)*

**Stratum: G**

Height avg. = 0.5m, range 0.15-1m, 6 sites

PFC avg. = 62.8%, range 48-90%, 6 sites

*Dominant species (relative cover, frequency): Echinochloa colona\* (23, 22%), Heteropogon contortus (17, 44%), Eragrostis indet. (17, 22%), Urochloa panicoides var. pubescens\* (13, 22%), Eleusine indica\* (11, 22%)*

*Frequent species (cover, frequency): GRAMINOIDS: Heteropogon contortus (9, 44%), Chloris pectinata (5, 22%), Chloris virgata\* (3, 22%), Cyperus bifax (22%), Dichanthium indet. (5, 22%), Echinochloa colona\* (18, 22%), Eleusine indica\* (10, 22%), Eragrostis indet. (8, 22%), Melinis repens\* (3, 22%), Urochloa panicoides var. pubescens\* (8, 22%), Arundinella indet. (11, 11%), Bothriochloa bladhii (19, 11%), Bothriochloa ewartiana (11%), Bothriochloa indet. (3, 11%), Bothriochloa pertusa\* (5, 11%), Brachyachne tenella (3, 11%), Cenchrus echinatus\* (11%), Cymbopogon refractus (11%), Cyperus concinnus (1, 11%), Cyperus nutans var. eleusinoides (11%), Eriochloa crebra (11%), Eulalia indet. (11%), Fimbristylis dichotoma (8, 11%), Iseilema fragile (11%), Iseilema indet. (2, 11%), Panicum seminudum var. cairnsianum (15, 11%), Poaceae indet. (3, 11%), Pseudopogonatherum indet. (11%), Schizachyrium indet. (41, 11%), Schizachyrium pseudeulalia (2, 11%), Schoenoplectus mucronatus (11%), Thaumastochloa indet. (25, 11%), Themeda quadrivalvis\* (5, 11%)*

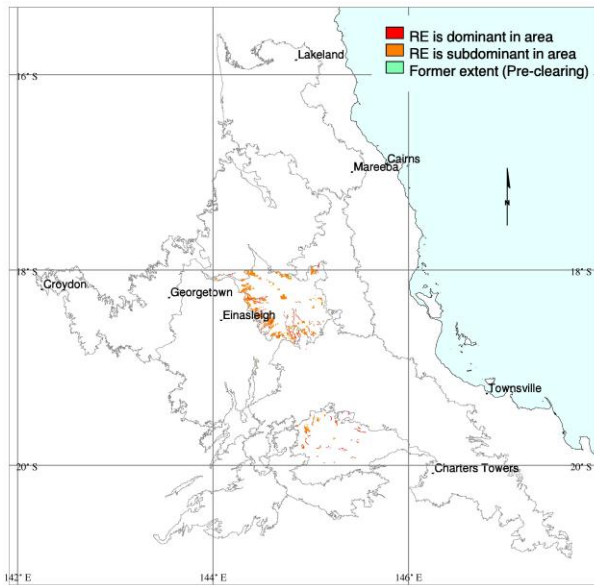
*FORBS: Rhynchosia minima (3, 33%), Sida corrugata (33%), Bidens pilosa\* (22%), Grewia retusifolia (1, 22%), Phyllanthus indet. (22%), Polymeria pusilla (3, 22%), Abutilon indet. (11%), Abutilon oxycarpum (11%), Achyranthes aspera (11%), Ageratum houstonianum\* (11%), Amaranthus indet. (11%), Asteraceae indet. (11%), Boerhavia indet. (11%), Capparis indet. (11%), Crassocephalum crepidioides\* (11%), Crotalaria indet. (2, 11%), Cymbidium canaliculatum (11%), Diospyros indet. (11%), Eriocaulon indet. (11%), Eustrephus latifolius (11%), Glycine tabacina (11%), Hibiscus panduriformis (1, 11%), Hibiscus sturtii (11%), Hibiscus trionum (11%), Hydrocotyle acutiloba (11%), Ipomoea lonchophylla (11%), Jacquemontia indet. (11%), Malvastrum americanum\* (10, 11%), Malvastrum americanum var. americanum\* (11%), Melaleuca bracteata (2, 11%), Melochia pyramidata\* (11%), Neptunia indet. (10, 11%), Ocimum basilicum\* (11%), Oxalis indet. (11%), Phyllanthus fuernrohrii (11%), Physalis indet. (11%), Rostellularia adscendens (11%), Senna indet. (11%), Sida indet. (4, 11%), Sida rhombifolia\* (11%), Solanum americanum (11%), Stephania japonica (11%), Wahlenbergia indet. (11%), Wedelia spilanthisoides (11%)*

Dominant species: Relative cover (mean of cover of species / total cover of all species in that stratum for all values > zero) and frequency (percent of total sites) ordered by decreasing relative abundance. Up to five most dominant species with frequency > 20% listed for each stratum.

Frequent species: Cover (mean of all values > zero) and frequency (percent of total sites) of all species occurring in more than 5% of sites ordered by decreasing frequency. Ground layer species are listed as either graminoid or forb.

Naturalised species have an asterisk (\*) after the name. indet. after listed name = indeterminate species or genus

**Melaleuca bracteata dominated low open-forest and woodlands on creek lines on basalt**



M. Newton

Pre-clearing area (ha), remnant area (ha) and per cent remaining: 10,571 10,440 99%

Species recorded: Total: 65; woody: 15; ground: 51; Avg. spp./site: 29.0; std dev.: 4.0, 2 site(s)

Basal area: Avg./site: 17.0 m<sup>2</sup>/ha, range: 13.0 - 21 m<sup>2</sup>/ha, std. deviation: 4 m<sup>2</sup>/ha, 2 site(s)

Structural formation: Woodland: 33%; open-forest: 33%; low open-forest: 33%, 3 site(s)

Representative sites: 25757, 26167, 26928.

**Stratum: T1**

Height avg. = 10.7m, range 8-12m, 3 sites

Crown cover avg. = 57.7%, range 38.0-72.0%, 3 sites

Stem density/ha avg. = 220, range 160-280, 2 sites

*Dominant species (relative cover, frequency): Melaleuca bracteata (99, 100%), Euroschinus falcatus var. falcatus (2, 33%), Brachychiton australis (2, 33%)*

*Frequent species (cover, frequency): Melaleuca bracteata (54, 100%), Alectryon oleifolius (33%), Brachychiton australis (1, 33%), Celtis paniculata (33%), Cymbidium canaliculatum (33%), Euroschinus falcatus var. falcatus (1, 33%)*

**Stratum: S1**

Height avg. = 1.8m, range 1.5-2m, 2 sites

Crown cover avg. = 0.3%, range 0.0-0.6%, 2 sites

*Dominant species (relative cover, frequency): Cryptostegia grandiflora\* (88, 33%), Terminalia aridicola (20, 33%), Melaleuca bracteata (20, 33%), Lysiphyllum carronii (20, 33%), Capparis lasiantha (20, 33%)*

*Frequent species (cover, frequency): Ajuga australis (33%), Atalaya hemiglauca (33%), Capparis lasiantha (33%), Cryptostegia grandiflora\* (1, 33%), Ficus opposita (33%), Ficus rubiginosa (33%), Ficus virens (33%), Lysiphyllum carronii (33%), Melaleuca bracteata (33%), Terminalia aridicola (33%)*

Dominant species: Relative cover (mean of cover of species / total cover of all species in that stratum for all values > zero) and frequency (percent of total sites) ordered by decreasing relative abundance. Up to five most dominant species with frequency > 20% listed for each stratum.

Frequent species: Cover (mean of all values > zero) and frequency (percent of total sites) of all species occurring in more than 5% of sites ordered by decreasing frequency. Ground layer species are listed as either graminoid or forb.

Naturalised species have an asterisk (\*) after the name. indet. after listed name = indeterminate species or genus

**Stratum: G**

Height avg. = 0.4m, range 0.3-0.4m, 2 sites

PFC avg. = 41.0%, range 18-64%, 2 sites

*Dominant species (relative cover, frequency):* *Glycine indet.* (36, 33%), *Dichanthium indet.* (32, 33%), *Echinochloa colona\** (28, 33%), *Dichanthium sericeum* (24, 33%), *Lamiaceae indet.* (23, 33%)

*Frequent species (cover, frequency):* **GRAMINOIDS:** *Arundinella indet.* (33%), *Arundinella nepalensis* (33%), *Bothriochloa bladhii subsp. bladhii* (33%), *Cyperus difformis* (4, 33%), *Cyperus victoriensis* (1, 33%), *Dichanthium indet.* (6, 33%), *Dichanthium sericeum* (14, 33%), *Digitaria bicornis* (33%), *Echinochloa colona\** (16, 33%), *Echinochloa indet.* (1, 33%), *Elytrophorus spicatus* (33%), *Eragrostis indet.* (33%), *Eriochloa crebra* (33%), *Eulalia aurea* (33%), *Heteropogon contortus* (33%), *Iseilema indet.* (1, 33%), *Leersia hexandra* (33%), *Panicum seminudum var. cairnsianum* (33%), *Poaceae indet.* (33%), *Sporobolus indet.* (33%)

**FORBS:** *Achyranthes aspera* (1, 67%), *Acmella grandiflora var. brachyglossa* (1, 33%), *Alstonia constricta* (33%), *Alternanthera brasiliiana\** (2, 33%), *Alternanthera indet.* (33%), *Anagallis pumila* (2, 33%), *Asteraceae indet.* (2, 33%), *Cissus indet.* (33%), *Convolvulaceae indet.* (33%), *Corchorus indet.* (33%), *Cryptostegia grandiflora\** (33%), *Desmodium muelleri* (33%), *Eclipta prostrata* (33%), *Euphorbiaceae indet.* (33%), *Eustrephus latifolius* (33%), *Flueggea virosa subsp. melanthesoides* (33%), *Glycine indet.* (7, 33%), *Lamiaceae indet.* (13, 33%), *Marsilea mutica* (33%), *Myriophyllum verrucosum* (33%), *Neptunia indet.* (33%), *Passiflora foetida\** (33%), *Phyllanthus indet.* (33%), *Senna indet.* (33%), *Sida corrugata* (33%), *Sida indet.* (33%), *Sida rhombifolia\** (33%), *Solanum seafortianum\** (33%), *Triumfetta indet.* (33%), *Veronica plebeia* (2, 33%), *Vigna lanceolata* (33%)

---

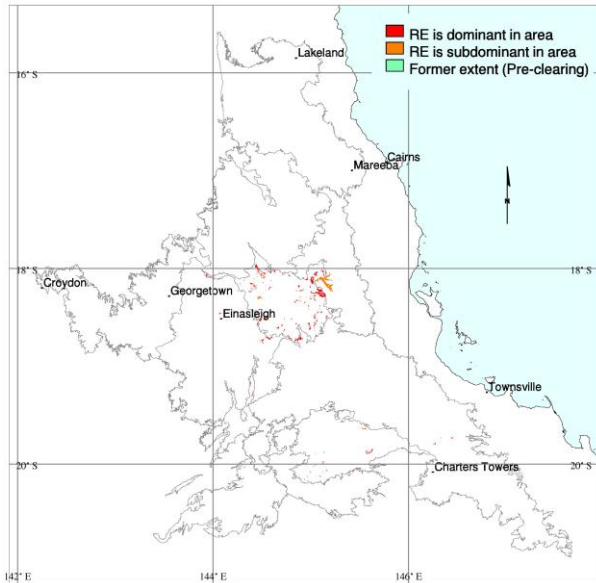
Dominant species: Relative cover (mean of cover of species / total cover of all species in that stratum for all values > zero) and frequency (percent of total sites) ordered by decreasing relative abundance. Up to five most dominant species with frequency > 20% listed for each stratum.

Frequent species: Cover (mean of all values > zero) and frequency (percent of total sites) of all species occurring in more than 5% of sites ordered by decreasing frequency. Ground layer species are listed as either graminoid or forb.

Naturalised species have an asterisk (\*) after the name. indet. after listed name = indeterminate species or genus



**Wetlands (sometimes ephemeral) with aquatic species and fringed with Eucalyptus spp. communities on basalt plains**



M. Newton

Pre-clearing area (ha), remnant area (ha) and per cent remaining: 20,957 20,424 97%

Species recorded: Total: 51; woody: 18; ground: 35; Avg. spp./site: 14.3; std dev.: 4.1, 3 site(s)

Basal area: Avg./site: 3.3 m<sup>2</sup>/ha, range: 1.0 - 6 m<sup>2</sup>/ha, std. deviation: 2 m<sup>2</sup>/ha, 4 site(s)

Structural formation: Woodland: 60%; tussock grassland: 20%; open-woodland: 20%, 5 site(s)

Representative sites: 26014, 26028, 26293, 26866, 26960.

**Stratum: E**

Height avg. = 12.0m, 1 site

Crown cover avg. = 1.6%, 1 site

*Frequent species (cover, frequency): Casuarina cristata (2, 20%)*

**Stratum: T1**

Height avg. = 16.3m, range 11-20m, 3 sites

Crown cover avg. = 30.7%, range 22.5-38.0%, 3 sites

Stem density/ha avg. = 60, range 20-100, 2 sites

*Frequent species (cover, frequency): Corymbia clarksoniana (16, 20%), Eucalyptus camaldulensis (22, 20%), Eucalyptus camaldulensis x E.platyphylla (20%), Eucalyptus platyphylla (18, 20%), Eucalyptus tereticornis (14, 20%), Grevillea pteridifolia (1, 20%), Parinari nonda (8, 20%)*

Dominant species: Relative cover (mean of cover of species / total cover of all species in that stratum for all values > zero) and frequency (percent of total sites) ordered by decreasing relative abundance. Up to five most dominant species with frequency > 20% listed for each stratum.

Frequent species: Cover (mean of all values > zero) and frequency (percent of total sites) of all species occurring in more than 5% of sites ordered by decreasing frequency. Ground layer species are listed as either graminoid or forb.

Naturalised species have an asterisk (\*) after the name. indet. after listed name = indeterminate species or genus

**Stratum: T2**

Height avg. = 6.5m, range 6-7m, 2 sites

Crown cover avg. = 19.2%, range 15.9-22.5%, 2 sites

Stem density/ha avg. = 220, 1 site

*Frequent species (cover, frequency): Corymbia dallachiana (3, 20%), Grevillea glauca (20%), Hakea arborescens (16, 20%), Melaleuca bracteata (20%), Melaleuca nervosa (13, 20%), Melaleuca viridiflora (1, 20%)*

**Stratum: S1**

Height avg. = 1.5m, range 1-2m, 4 sites

Crown cover avg. = 1.5%, range 0.0-6.1%, 4 sites

Stem density/ha avg. = 833, range 40-2340, 3 sites

*Dominant species (relative cover, frequency): Eucalyptus camaldulensis (50, 40%)*

*Frequent species (cover, frequency): Eucalyptus camaldulensis (40%), Acacia farnesiana\* (20%), Cryptostegia grandiflora\* (20%), Grevillea pteridifolia (20%), Hakea arborescens (20%), Hovea lanceolata (20%), Melaleuca nervosa (20%), Melaleuca viridiflora (6, 20%), Planchonia careya (20%)*

**Stratum: G**

Height avg. = 0.4m, range 0.2-0.6m, 3 sites

PFC avg. = 26.3%, range 8-51%, 3 sites

*Dominant species (relative cover, frequency): Marsilea hirsuta (29, 40%)*

*Frequent species (cover, frequency): GRAMINOIDS: Aristida indet. (1, 20%), Cyperus difformis (20%), Cyperus macrostachyos (20%), Echinochloa colona\* (1, 20%), Eleocharis atropurpurea (20%), Eleocharis pallens (5, 20%), Eleocharis philippinensis (20%), Elytrophorus spicatus (20%), Eragrostis brownii (20%), Eriachne mucronata (20%), Eriochloa pseudoacrotricha (20%), Melinis repens\* (20%), Panicum laevinode (20%), Panicum paludosum (20%), Poaceae indet. (5, 20%), Pseudoraphis spinescens (18, 20%), Schizachyrium fragile (14, 20%), Schoenoplectus dissachanthus (20%), Schoenoplectus lateriflorus (5, 20%), Thaumastochloa indet. (20%)*

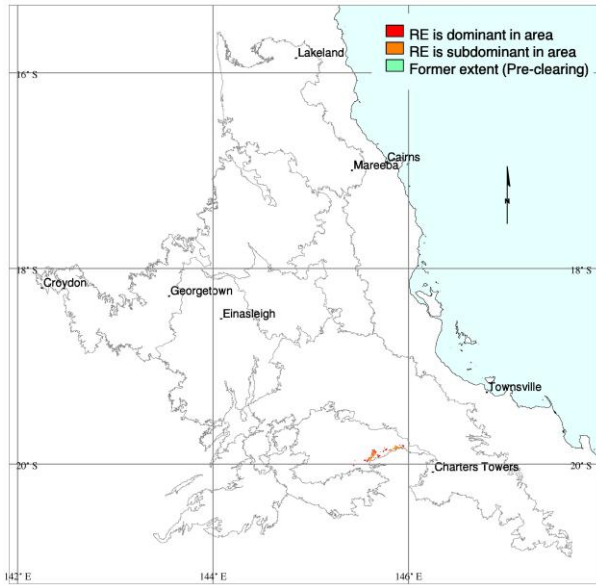
*FORBS: Marsilea hirsuta (14, 40%), Alternanthera denticulata (1, 20%), Ammannia multiflora (20%), Calotis cuneata var. cuneata (20%), Centipeda minima (1, 20%), Ludwigia indet. (20%), Monochoria cyanea (20%), Myriophyllum indet. (20%), Oldenlandia mitrasacmoides (20%), Polycarpaea corymbosa (20%), Sesbania cannabina (20%), Tephrosia juncea (20%)*

Dominant species: Relative cover (mean of cover of species / total cover of all species in that stratum for all values > zero) and frequency (percent of total sites) ordered by decreasing relative abundance. Up to five most dominant species with frequency > 20% listed for each stratum.

Frequent species: Cover (mean of all values > zero) and frequency (percent of total sites) of all species occurring in more than 5% of sites ordered by decreasing frequency. Ground layer species are listed as either graminoid or forb.

Naturalised species have an asterisk (\*) after the name. indet. after listed name = indeterminate species or genus

**Closed depressions often with a fringe of *Eucalyptus camaldulensis* or *Corymbia dallachiana* surrounded by Quaternary basalt**



Pre-clearing area (ha), remnant area (ha) and per cent remaining: 4,419 4,404 100%

Species recorded: Total: 13; woody: 0; ground: 13; Avg. spp./site: 13.0; std dev.: 0.0, 1 site(s)

Basal area: 0

Structural formation: Tussock grassland: 100%, 1 site(s)

Representative sites: 27116.

**Stratum: G**

Height avg. = 0.3m, 1 site

PFC avg. = 76.0%, 1 site

*Dominant species (relative cover, frequency): Cynodon dactylon (74, 100%), Cyperus indet. (24, 100%)*

*Frequent species (cover, frequency): GRAMINOIDS: Cynodon dactylon (58, 100%), Cyperus indet. (19, 100%), Eragrostis indet. (100%)*

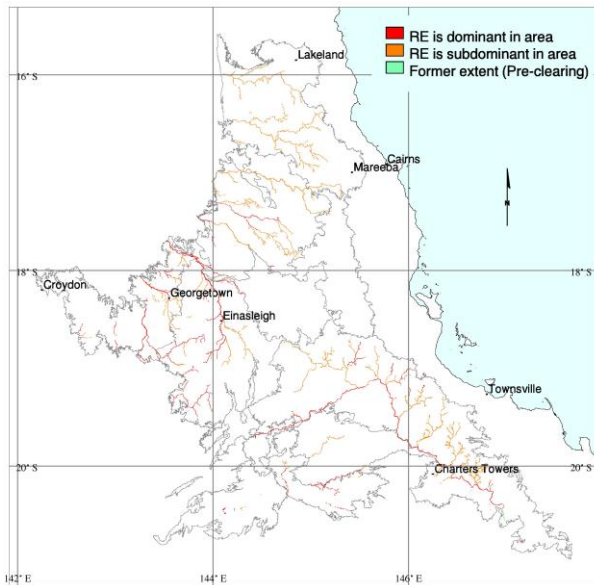
*FORBS: Achyranthes indet. (100%), Angiosperm indet. (100%), Crotalaria indet. (100%), Euphorbia indet. (100%), Ludwigia indet. (100%), Malvastrum indet. (100%), Sesbania indet. (100%), Sida indet. (100%), Stachytarpheta indet. (100%), Xanthium spinosum\* (100%)*

Dominant species: Relative cover (mean of cover of species / total cover of all species in that stratum for all values > zero) and frequency (percent of total sites) ordered by decreasing relative abundance. Up to five most dominant species with frequency > 20% listed for each stratum.

Frequent species: Cover (mean of all values > zero) and frequency (percent of total sites) of all species occurring in more than 5% of sites ordered by decreasing frequency. Ground layer species are listed as either graminoid or forb.

Naturalised species have an asterisk (\*) after the name. indet. after listed name = indeterminate species or genus

**Sandy river beds sometimes with patches of ephemeral grassland, herbland or sedgeland and occasional shrubs of *Melaleuca bracteata*, *M. trichostachya* and *M. linariifolia***



Mark Newton

Pre-clearing area (ha), remnant area (ha) and per cent remaining: 56,527 55,511 98%

Species recorded: Total: 41; woody: 17; ground: 27; Avg. spp./site: 15.3; std dev.: 9.0, 3 site(s)

Basal area: 0

Structural formation: Tussock grassland: 33%; tall open-shrubland: 33%; shrubland: 33%, 3 site(s)

Representative sites: 26691, 27016, 27030.

**Stratum: E**

Height avg. = 5.0m, 1 site

Crown cover avg. = 1.6%, 1 site

Stem density/ha avg. = 20, 1 site

*Dominant species (relative cover, frequency): Eucalyptus camaldulensis (99, 33%), Casuarina cunninghamiana (1, 33%)*

*Frequent species (cover, frequency): Casuarina cunninghamiana (33%), Eucalyptus camaldulensis (2, 33%)*

**Stratum: S1**

Height avg. = 3.0m, range 2-4m, 3 sites

Crown cover avg. = 8.5%, range 2.9-18.1%, 3 sites

Stem density/ha avg. = 433, range 220-640, 3 sites

*Dominant species (relative cover, frequency): Melaleuca fluviatilis (77, 33%), Melaleuca trichostachya (63, 33%), Casuarina cunninghamiana (20, 33%), Lophostemon grandiflorus (16, 67%), Melaleuca bracteata (13, 33%)*

*Frequent species (cover, frequency): Eucalyptus camaldulensis (67%), Lophostemon grandiflorus (1, 67%), Melaleuca viminalis (67%), Acacia holosericea (33%), Acacia simsii (33%), Atalaya angustifolia (33%), Casuarina cunninghamiana (1, 33%), Corymbia clarksoniana (33%), Corymbia dallachiana (33%), Erythrophleum chlorostachys (33%), Eucalyptus crebra (33%), Eucalyptus leptophleba (33%), Grevillea dryandri (33%), Melaleuca bracteata (2, 33%), Melaleuca fluviatilis (2, 33%), Melaleuca trichostachya (8, 33%), Myrsine porosa (33%)*

Dominant species: Relative cover (mean of cover of species / total cover of all species in that stratum for all values > zero) and frequency (percent of total sites) ordered by decreasing relative abundance. Up to five most dominant species with frequency > 20% listed for each stratum.

Frequent species: Cover (mean of all values > zero) and frequency (percent of total sites) of all species occurring in more than 5% of sites ordered by decreasing frequency. Ground layer species are listed as either graminoid or forb.

Naturalised species have an asterisk (\*) after the name. indet. after listed name = indeterminate species or genus

**Stratum: G**

Height avg. = 0.6m, range 0.1-1m, 3 sites

PFC avg. = 18.0%, range 0-42%, 3 sites

*Dominant species (relative cover, frequency): Bothriochloa bladhii (50, 33%), Dichanthium indet. (33, 33%), Heteropogon triticeus (22, 33%), Heteropogon contortus (20, 100%), Eragrostis indet. (17, 33%)*

*Frequent species (cover, frequency): GRAMINOIDS: Heteropogon contortus (6, 100%), Melinis repens\* (67%), Aristida superpendens (33%), Arundinella setosa (33%), Bothriochloa bladhii (6, 33%), Bothriochloa pertusa\* (2, 33%), Capillipedium parviflorum (33%), Dichanthium indet. (4, 33%), Eragrostis indet. (33%), Heteropogon triticeus (9, 33%), Ischaemum australe (2, 33%), Mnesithea rottboellioides (33%), Panicum mindanaense (33%), Sarga plumosum (33%), Setaria surgens (33%), Themeda triandra (5, 33%)*

*FORBS: Alysicarpus ovalifolius\* (33%), Ammannia multiflora (33%), Argemone ochroleuca subsp. ochroleuca\* (33%), Desmodium indet. (33%), Glycine indet. (33%), Heliotropium peninsulare (33%), Hyptis suaveolens\* (2, 33%), Ipomoea coptica (33%), Lagerstroemia archeriana (4, 33%), Richardia indet. (33%), Tephrosia filipes (33%)*

---

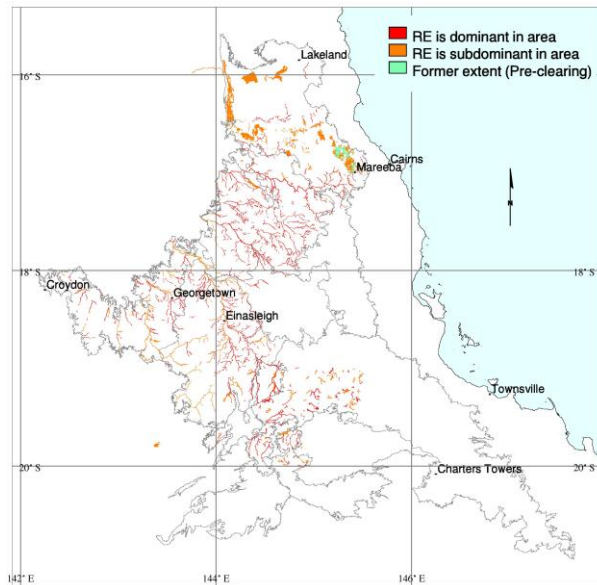
Dominant species: Relative cover (mean of cover of species / total cover of all species in that stratum for all values > zero) and frequency (percent of total sites) ordered by decreasing relative abundance. Up to five most dominant species with frequency > 20% listed for each stratum.

Frequent species: Cover (mean of all values > zero) and frequency (percent of total sites) of all species occurring in more than 5% of sites ordered by decreasing frequency. Ground layer species are listed as either graminoid or forb.

Naturalised species have an asterisk (\*) after the name. indet. after listed name = indeterminate species or genus



**Melaleuca spp., Eucalyptus camaldulensis and Casuarina cunninghamiana fringing open-forest on streams and channels**



M. Newton

Pre-clearing area (ha), remnant area (ha) and per cent remaining: 100,204 98,075 98%

Species recorded: Total: 93; woody: 40; ground: 55; Avg. spp./site: 17.3; std dev.: 4.5, 7 site(s)

Basal area: Avg./site: 10.3 m<sup>2</sup>/ha, range: 4.5 - 15 m<sup>2</sup>/ha, std. deviation: 4 m<sup>2</sup>/ha, 6 site(s)

Structural formation: Open-forest: 43%; low woodland: 43%; low open-forest: 14%, 7 site(s)

Representative sites: 25942, 26637, 26717, 26850, 26855, 26861, 26951.

**Stratum: T1**

Height avg. = 13.0m, range 5-23m, 7 sites

Crown cover avg. = 54.9%, range 24.7-80.2%, 7 sites

Stem density/ha avg. = 294, range 80-480, 7 sites

*Dominant species (relative cover, frequency): Melaleuca fluviatilis (55, 29%), Lophostemon grandiflorus (42, 43%), Eucalyptus camaldulensis (19, 57%), Casuarina cunninghamiana (13, 29%), Corymbia dallachiana (2, 29%)*

*Frequent species (cover, frequency): Eucalyptus camaldulensis (10, 57%), Lophostemon grandiflorus (15, 43%), Casuarina cunninghamiana (1, 29%), Corymbia dallachiana (2, 29%), Eucalyptus leptophleba (1, 29%), Melaleuca fluviatilis (36, 29%), Atalaya hemiglauca (14%), Casuarina cunninghamiana subsp. cunninghamiana (75, 14%), Eucalyptus crebra (14%), Eucalyptus tereticornis (14%), Lophostemon suaveolens (14%), Melaleuca argentea (22, 14%), Melaleuca bracteata (58, 14%), Melaleuca leucadendra (14%), Parinari nonda (14%), Terminalia indet. (14%)*

**Stratum: T2**

Height avg. = 6.9m, range 3.5-11m, 4 sites

Crown cover avg. = 15.4%, range 0.6-24.7%, 4 sites

Stem density/ha avg. = 130, range 60-200, 4 sites

*Dominant species (relative cover, frequency): Melaleuca linariifolia (60, 43%), Eucalyptus camaldulensis (8, 29%), Lophostemon grandiflorus (2, 29%), Ficus opposita (2, 29%)*

*Frequent species (cover, frequency): Melaleuca linariifolia (4, 43%), Eucalyptus camaldulensis (1, 29%), Ficus opposita (29%), Lophostemon grandiflorus (29%), Acacia aulacocarpa (14%), Acacia chisholmii (14%), Acacia simsii (14%), Alphitonia indet. (14%), Casuarina cunninghamiana (14%), Lysiphylum indet. (14%), Melaleuca argentea (4, 14%), Melaleuca bracteata (18, 14%), Melaleuca leucadendra (14%), Passiflora foetida\* (14%), Terminalia aridicola (14%), Terminalia hadleyana subsp. carpentariae (14%)*

Dominant species: Relative cover (mean of cover of species / total cover of all species in that stratum for all values > zero) and frequency (percent of total sites) ordered by decreasing relative abundance. Up to five most dominant species with frequency > 20% listed for each stratum.

Frequent species: Cover (mean of all values > zero) and frequency (percent of total sites) of all species occurring in more than 5% of sites ordered by decreasing frequency. Ground layer species are listed as either graminoid or forb.

Naturalised species have an asterisk (\*) after the name. indet. after listed name = indeterminate species or genus



**Stratum: S1**

Height avg. = 2.4m, range 1.5-3m, 6 sites

Crown cover avg. = 1.1%, range 0.0-4.4%, 6 sites

Stem density/ha avg. = 250, range 140-380, 4 sites

*Dominant species (relative cover, frequency): Melaleuca bracteata (75, 29%), Atalaya hemiglauca (26, 29%), Lophostemon grandiflorus (16, 43%), Cryptostegia grandiflora\* (13, 29%), Acacia indet. (1, 29%)*

*Frequent species (cover, frequency): Lophostemon grandiflorus (43%), Acacia indet. (29%), Atalaya hemiglauca (29%), Cryptostegia grandiflora\* (29%), Melaleuca bracteata (29%), Acacia holosericea (1, 14%), Acacia leptostachya (14%), Acacia multisiliqua (3, 14%), Acacia simsii (14%), Bossiaea armitii (14%), Casuarina cunninghamiana (14%), Cochlospermum gillivraei (14%), Dodonaea indet. (14%), Eucalyptus camaldulensis (14%), Eucalyptus tereticornis (14%), Gardenia vilhelmii (14%), Grevillea pteridifolia (14%), Leptospermum indet. (14%), Melaleuca argentea (14%), Melaleuca fluviatilis (1, 14%), Melaleuca leucadendra (14%), Melaleuca viminalis (3, 14%), Petalostigma pubescens (14%), Santalum lanceolatum (14%), Terminalia indet. (14%)*

**Stratum: G**

Height avg. = 0.4m, range 0.1-0.8m, 7 sites

PFC avg. = 4.9%, range 0-13%, 7 sites

*Dominant species (relative cover, frequency): Heteropogon contortus (31, 43%), Nelsonia campestris (14, 29%), Gahnia indet. (14, 29%), Eragrostis indet. (12, 43%), Lomandra indet. (8, 57%)*

*Frequent species (cover, frequency): GRAMINOIDS: Eragrostis indet. (43%), Heteropogon contortus (1, 43%), Arundinella setosa (29%), Eriochloa indet. (29%), Gahnia indet. (29%), Themeda quadrivalvis\* (29%), Arundinella indet. (14%), Bothriochloa bladhii subsp. bladhii (8, 14%), Bothriochloa pertusa\* (14%), Cyperaceae indet. (14%), Cyperus conicus var. conicus (14%), Cyperus orgadophilus (14%), Eragrostis brownii (14%), Eragrostis cumingii (14%), Eragrostis pubescens (14%), Eriachne armitii (14%), Lepironia articulata (14%), Melinis repens\* (14%), Oryza australiensis (14%), Panicum decompositum (14%), Panicum indet. (14%), Paspalidium indet. (14%), Paspalum indet. (14%), Sarga plumosum (14%), Sehima nervosum (3, 14%), Setaria surgens (14%), Themeda indet. (14%), Triodia indet. (14%)*

*FORBS: Lomandra indet. (57%), Nelsonia campestris (29%), Bidens bipinnata\* (14%), Blumea diffusa (14%), Cajanus indet. (14%), Catharanthus roseus\* (14%), Chamaesyce indet. (14%), Crotalaria indet. (14%), Desmodium indet. (14%), Dianella caerulea var. vannata (14%), Eucalyptus camaldulensis (14%), Gamochaeta pensylvanica\* (14%), Hibiscus meraukensis (14%), Hyptis indet. (14%), Hyptis suaveolens\* (14%), Ipomoea hederifolia\* (14%), Ipomoea plebeia (14%), Labichea nitida (14%), Ludwigia octovalvis (14%), Ocimum indet. (14%), Phyllanthus lamprophyllus (14%), Rhynchosia minima (14%), Sida indet. (14%), Sonchus indet. (14%), Stylosanthes scabra\* (1, 14%), Tephrosia leptoclada (10, 14%), Triumfetta pentandra\* (14%)*

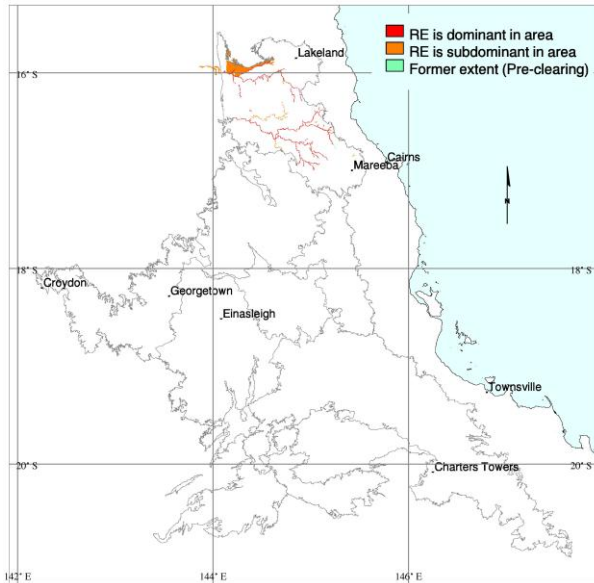
---

Dominant species: Relative cover (mean of cover of species / total cover of all species in that stratum for all values > zero) and frequency (percent of total sites) ordered by decreasing relative abundance. Up to five most dominant species with frequency > 20% listed for each stratum.

Frequent species: Cover (mean of all values > zero) and frequency (percent of total sites) of all species occurring in more than 5% of sites ordered by decreasing frequency. Ground layer species are listed as either graminoid or forb.

Naturalised species have an asterisk (\*) after the name. indet. after listed name = indeterminate species or genus

**Melaleuca leucadendra and/or M. fluviatilis and/or Eucalyptus camaldulensis or E. tereticornis fringing open-forest on major rivers**



Mark Newton

Pre-clearing area (ha), remnant area (ha) and per cent remaining: 14,939 14,636 98%

Species recorded: Total: 97; woody: 37; ground: 62; Avg. spp./site: 25.8; std dev.: 7.7, 6 site(s)

Basal area: Avg./site: 12.5 m<sup>2</sup>/ha, range: 2.5 - 29 m<sup>2</sup>/ha, std. deviation: 9 m<sup>2</sup>/ha, 6 site(s)

Structural formation: Open-woodland: 33%; open-forest: 33%; low woodland: 17%; low open-forest: 17%, 6 site(s)

Representative sites: 25863, 26947, 26955, 27015, 27017, 27021.

**Stratum: E**

Height avg. = 14.0m, 1 site  
 Crown cover avg. = 4.4%, 1 site  
 Stem density/ha avg. = 40, 1 site

*Frequent species (cover, frequency): Eucalyptus camaldulensis (4, 17%)*

**Stratum: T1**

Height avg. = 13.0m, range 8-22m, 6 sites  
 Crown cover avg. = 45.4%, range 11.8-77.0%, 6 sites  
 Stem density/ha avg. = 327, range 20-840, 6 sites

*Dominant species (relative cover, frequency): Melaleuca leucadendra (63, 33%), Melaleuca fluviatilis (52, 67%), Eucalyptus camaldulensis (50, 67%), Nauclea orientalis (10, 67%), Lophostemon grandiflorus (7, 33%)*

*Frequent species (cover, frequency): Eucalyptus camaldulensis (7, 67%), Melaleuca fluviatilis (30, 67%), Nauclea orientalis (5, 67%), Acacia auriculiformis (33%), Lophostemon grandiflorus (1, 33%), Melaleuca leucadendra (40, 33%), Eucalyptus tereticornis (8, 17%), Ficus nodosa (1, 17%), Ficus opposita (17%), Ficus racemosa var. racemosa (17%), Terminalia indet. (3, 17%), Terminalia muelleri (17%)*

Dominant species: Relative cover (mean of cover of species / total cover of all species in that stratum for all values > zero) and frequency (percent of total sites) ordered by decreasing relative abundance. Up to five most dominant species with frequency > 20% listed for each stratum.

Frequent species: Cover (mean of all values > zero) and frequency (percent of total sites) of all species occurring in more than 5% of sites ordered by decreasing frequency. Ground layer species are listed as either graminoid or forb.

Naturalised species have an asterisk (\*) after the name. indet. after listed name = indeterminate species or genus

**Stratum: T2**

Height avg. = 8.0m, range 6-10m, 3 sites

Crown cover avg. = 8.0%, range 0.6-11.8%, 3 sites

Stem density/ha avg. = 290, range 280-300, 2 sites

*Dominant species (relative cover, frequency):* *Acacia auriculiformis* (27, 33%), *Terminalia sericocarpa* (25, 33%), *Melaleuca trichostachya* (2, 33%)

*Frequent species (cover, frequency):* *Acacia auriculiformis* (33%), *Melaleuca trichostachya* (33%), *Terminalia sericocarpa* (33%), *Acacia aulacocarpa* (7, 17%), *Acacia indet.* (17%), *Acacia oraria* (17%), *Acacia simsii* (17%), *Barringtonia acutangula* (17%), *Casuarina cunninghamiana* (3, 17%), *Eucalyptus camaldulensis* (17%), *Eucalyptus tereticornis* (1, 17%), *Ficus indet.* (17%), *Ficus nodosa* (17%), *Lagerstroemia archeriana* (17%), *Lophostemon grandiflorus subsp. riparius* (17%), *Melaleuca leucadendra* (1, 17%), *Pouteria sericea* (3, 17%), *Terminalia muelleri* (17%)

**Stratum: S1**

Height avg. = 3.4m, range 1.2-5m, 6 sites

Crown cover avg. = 7.6%, range 0.6-27.0%, 6 sites

Stem density/ha avg. = 577, range 60-1300, 6 sites

*Dominant species (relative cover, frequency):* *Lophostemon grandiflorus* (34, 33%), *Nauclea orientalis* (34, 50%), *Melaleuca trichostachya* (30, 33%), *Melaleuca leucadendra* (24, 33%), *Melaleuca fluviatilis* (15, 67%)

*Frequent species (cover, frequency):* *Cryptostegia grandiflora\** (100%), *Ludwigia octovalvis* (67%), *Melaleuca fluviatilis* (67%), *Nauclea orientalis* (50%), *Terminalia muelleri* (50%), *Acacia holosericea* (33%), *Acacia indet.* (33%), *Lophostemon grandiflorus* (2, 33%), *Melaleuca leucadendra* (33%), *Melaleuca trichostachya* (3, 33%), *Terminalia sericocarpa* (33%), *Acacia aulacocarpa* (2, 17%), *Acacia auriculiformis* (2, 17%), *Acacia simsii* (17%), *Antidesma parvifolium* (17%), *Asclepias curassavica\** (17%), *Atalaya angustifolia* (17%), *Atractocarpus sessilis* (17%), *Barringtonia acutangula* (17%), *Eucalyptus camaldulensis* (1, 17%), *Eucalyptus tereticornis* (17%), *Ficus indet.* (17%), *Ficus opposita* (14, 17%), *Ficus racemosa var. racemosa* (17%), *Grevillea pteridifolia* (17%), *Hakea persiehana* (17%), *Lagerstroemia archeriana* (17%), *Luffa aegyptiaca* (17%), *Melaleuca linariifolia* (17%), *Passiflora foetida\** (17%), *Pouteria sericea* (1, 17%), *Urena lobata\** (17%)

**Stratum: G**

Height avg. = 0.5m, range 0.3-1m, 6 sites

PFC avg. = 14.2%, range 2-31%, 6 sites

*Dominant species (relative cover, frequency):* *Cynodon indet.* (35, 33%), *Sida indet.* (32, 33%), *Chrysopogon oliganthus* (11, 33%), *Nelsonia campestris* (7, 83%), *Paspalidium indet.* (6, 33%)

*Frequent species (cover, frequency):* **GRAMINOIDS:** *Eragrostis schultzei* (50%), *Panicum trichoides* (50%), *Chrysopogon oliganthus* (2, 33%), *Cynodon indet.* (5, 33%), *Cyperus indet.* (33%), *Melinis repens\** (33%), *Panicum larcomianum* (1, 33%), *Paspalidium indet.* (1, 33%), *Aristida superpendens* (17%), *Arundinella nepalensis* (1, 17%), *Arundinella setosa* (17%), *Chloris lobata* (17%), *Chrysopogon elongatus* (6, 17%), *Cynodon dactylon* (8, 17%), *Cyperus aquatilis* (11, 17%), *Cyperus brevifolius\** (17%), *Cyperus javanicus* (1, 17%), *Echinochloa colona\** (17%), *Heteropogon contortus* (4, 17%), *Heteropogon triticeus* (3, 17%), *Mnesithea rottboellioides* (17%), *Panicum indet.* (17%), *Panicum mindanaense* (1, 17%), *Paspalidium constrictum* (17%), *Paspalidium distans* (17%), *Sporobolus caroli* (17%), *Themeda quadrivalvis\** (17%), *Urochloa mosambicensis\** (17%), *Vetiveria indet.* (17%)

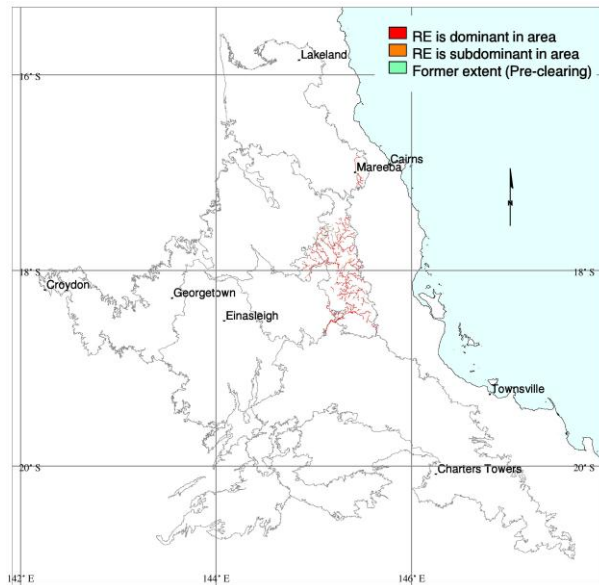
**FORBS:** *Nelsonia campestris* (1, 83%), *Achyranthes aspera* (50%), *Chamaesyce hirta\** (33%), *Cyanthillium cinereum* (33%), *Hyptis suaveolens\** (33%), *Ludwigia octovalvis* (33%), *Senna occidentalis\** (33%), *Sida indet.* (9, 33%), *Triumfetta rhomboidea\** (33%), *Xanthium occidentale\** (33%), *Acacia auriculiformis* (2, 17%), *Ageratum houstonianum\** (17%), *Alternanthera brasiliana\** (17%), *Breynia cernua* (17%), *Crotalaria goreensis\** (17%), *Cucumis indet.* (1, 17%), *Dendrophthoe glabrescens* (17%), *Emilia sonchifolia\** (17%), *Flemingia lineata* (17%), *Glinus lotoides* (17%), *Indigofera hirsuta* (17%), *Ipomoea indet.* (17%), *Lomandra indet.* (17%), *Lomandra longifolia* (17%), *Myrsine porosa* (17%), *Phyllanthus amarus\** (17%), *Phyllanthus virgatus* (17%), *Ricinus communis\** (17%), *Sesbania indet.* (17%), *Sida acuta\** (17%), *Sida cordifolia\** (17%), *Sida rohlenae* (17%), *Synedrella nodiflora\** (17%)

Dominant species: Relative cover (mean of cover of species / total cover of all species in that stratum for all values > zero) and frequency (percent of total sites) ordered by decreasing relative abundance. Up to five most dominant species with frequency > 20% listed for each stratum.

Frequent species: Cover (mean of all values > zero) and frequency (percent of total sites) of all species occurring in more than 5% of sites ordered by decreasing frequency. Ground layer species are listed as either graminoid or forb.

Naturalised species have an asterisk (\*) after the name. indet. after listed name = indeterminate species or genus

**Eucalyptus tereticornis +/- Casuarina cunninghamiana +/- Melaleuca spp. fringing woodland on channels and levees**



M. Newton

Pre-clearing area (ha), remnant area (ha) and per cent remaining: 20,082 19,015 95%

Species recorded: Total: 73; woody: 18; ground: 66; Avg. spp./site: 22.3; std dev.: 5.9, 4 site(s)

Basal area: Avg./site: 8.7 m<sup>2</sup>/ha, range: 5.0 - 11 m<sup>2</sup>/ha, std. deviation: 2 m<sup>2</sup>/ha, 4 site(s)

Structural formation: Woodland: 50%; open-forest: 50%, 4 site(s)

Representative sites: 27023, 27027, 37305, 37308.

**Stratum: T1**

Height avg. = 25.0m, range 20-28m, 4 sites

Crown cover avg. = 55.6%, range 40.2-66.2%, 4 sites

Stem density/ha avg. = 110, range 80-160, 4 sites

*Dominant species (relative cover, frequency): Casuarina cunninghamiana (68, 100%), Eucalyptus tereticornis (32, 100%)*

*Frequent species (cover, frequency): Casuarina cunninghamiana (35, 100%), Eucalyptus tereticornis (20, 100%), Lophostemon suaveolens (75%), Corymbia tessellaris (25%), Melaleuca leucadendra (25%), Nauclea orientalis (25%)*

**Stratum: T2**

Height avg. = 12.7m, range 8-15m, 3 sites

Crown cover avg. = 9.5%, range 0.0-27.0%, 3 sites

Stem density/ha avg. = 107, range 80-140, 3 sites

*Dominant species (relative cover, frequency): Casuarina cunninghamiana (73, 75%), Lophostemon suaveolens (20, 25%), Lantana camara\* (20, 25%), Jacaranda mimosifolia\* (20, 25%), Ficus opposita (20, 25%)*

*Frequent species (cover, frequency): Casuarina cunninghamiana (10, 75%), Ficus opposita (25%), Ficus racemosa var. racemosa (25%), Jacaranda mimosifolia\* (25%), Lantana camara\* (25%), Lophostemon suaveolens (25%), Melaleuca trichostachya (25%), Melaleuca viminalis (25%)*

Dominant species: Relative cover (mean of cover of species / total cover of all species in that stratum for all values > zero) and frequency (percent of total sites) ordered by decreasing relative abundance. Up to five most dominant species with frequency > 20% listed for each stratum.

Frequent species: Cover (mean of all values > zero) and frequency (percent of total sites) of all species occurring in more than 5% of sites ordered by decreasing frequency. Ground layer species are listed as either graminoid or forb.

Naturalised species have an asterisk (\*) after the name. indet. after listed name = indeterminate species or genus

**Stratum: S1**

Height avg. = 2.3m, range 1.5-3m, 4 sites

Crown cover avg. = 3.0%, range 0.0-9.8%, 4 sites

Stem density/ha avg. = 173, range 40-380, 3 sites

*Dominant species (relative cover, frequency):* *Macaranga tanarius* (87, 25%), *Lantana camara*\* (50, 25%), *Euroschinus falcatus* var. *falcatus* (50, 25%), *Ficus opposita* (42, 50%), *Alphitonia excelsa* (42, 50%)

*Frequent species (cover, frequency):* *Alphitonia excelsa* (50%), *Eucalyptus tereticornis* (50%), *Ficus opposita* (50%), *Alchornea thozetiana* (25%), *Casuarina cunninghamiana* (25%), *Corymbia tessellaris* (25%), *Euroschinus falcatus* var. *falcatus* (25%), *Lantana camara*\* (25%), *Macaranga tanarius* (8, 25%), *Nauclea orientalis* (1, 25%), *Senna obtusifolia*\* (25%), *Solanum torvum*\* (25%)

**Stratum: G**

Height avg. = 0.6m, range 0.1-1m, 4 sites

PFC avg. = 15.0%, range 6-24%, 4 sites

*Dominant species (relative cover, frequency):* *Chrysopogon filipes* (70, 50%), *Hyptis suaveolens*\* (36, 25%), *Poaceae* *indet.* (28, 50%), *Ageratum* *indet.* (18, 25%), *Ageratum conyzoides* (13, 25%)

*Frequent species (cover, frequency):* **GRAMINOIDS:** *Chrysopogon filipes* (11, 50%), *Cyperus difformis* (3, 50%), *Cyperus* *indet.* (50%), *Heteropogon contortus* (50%), *Poaceae* *indet.* (5, 50%), *Arundinella nepalensis* (25%), *Cynodon dactylon* (25%), *Cyperus aquatilis* (25%), *Cyperus distans* (25%), *Cyperus involucratus*\* (25%), *Cyperus trinervis* (25%), *Dichanthium fecundum* (25%), *Digitaria diffusa* (25%), *Eragrostis schultzei* (1, 25%), *Juncus usitatus* (25%), *Leptochloa fusca* subsp. *fusca* (25%), *Megathyrsus maximus*\* (25%), *Melinis minutiflora*\* (25%), *Oplismenus imbecillis* (25%), *Oplismenus* *indet.* (25%), *Panicum laevinode* (25%), *Paspalidium distans* (25%), *Paspalidium* *indet.* (25%), *Paspalum scrobiculatum* (25%), *Sporobolus jacquemontii*\* (25%), *Urochloa subquadripara*\* (25%)

**FORBS:** *Mitracarpus hirtus*\* (75%), *Oxalis* *indet.* (50%), *Praxelis clematidea*\* (50%), *Triumfetta* *indet.* (50%), *Viola hederacea* (2, 50%), *Ageratum conyzoides* (1, 25%), *Ageratum* *indet.* (5, 25%), *Alternanthera ficoidea*\* (25%), *Argemone ochroleuca* (25%), *Asclepias curassavica*\* (25%), *Bidens alba* (25%), *Christella dentata* (25%), *Convolvulus* *indet.* (25%), *Conyza* *indet.* (25%), *Crotalaria* *indet.* (3, 25%), *Drymaria cordata*\* (25%), *Emilia sonchifolia* var. *javanica*\* (25%), *Eustrephus latifolius* (25%), *Flemingia lineata* (25%), *Flemingia parviflora* (25%), *Glycine* *indet.* (1, 25%), *Hyptis capitata*\* (1, 25%), *Hyptis suaveolens*\* (4, 25%), *Lobelia membranacea* (25%), *Lomandra hystrix* (25%), *Lomandra longifolia* (25%), *Mecardonia procumbens*\* (25%), *Melaleuca* *indet.* (25%), *Passiflora* *indet.* (25%), *Persicaria* *indet.* (1, 25%), *Persicaria lapathifolia* (25%), *Phyllanthus* *indet.* (25%), *Phyllanthus simplex* (25%), *Pseudognaphalium luteoalbum* (25%), *Salvia misella*\* (25%), *Sida rhombifolia*\* (25%), *Solanum seafortianum*\* (25%), *Spermacoce* *indet.* (25%), *Stephania japonica* (25%), *Tristaniopsis* *indet.* (25%)

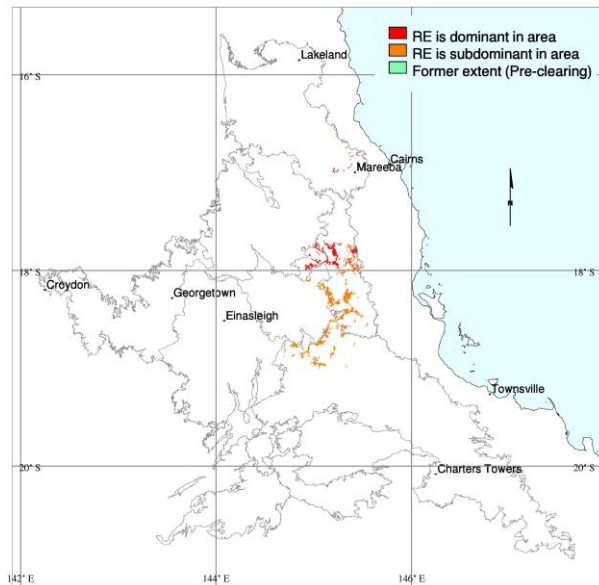
Dominant species: Relative cover (mean of cover of species / total cover of all species in that stratum for all values > zero) and frequency (percent of total sites) ordered by decreasing relative abundance. Up to five most dominant species with frequency > 20% listed for each stratum.

Frequent species: Cover (mean of all values > zero) and frequency (percent of total sites) of all species occurring in more than 5% of sites ordered by decreasing frequency. Ground layer species are listed as either graminoid or forb.

Naturalised species have an asterisk (\*) after the name. *indet.* after listed name = indeterminate species or genus



**Eucalyptus tereticornis and/or E. platyphylla and/or Corymbia clarksoniana woodland on alluvial flats, levees and plains**



G. W. Wilson

Pre-clearing area (ha), remnant area (ha) and per cent remaining: 30,764 27,391 89%

Species recorded: Total: 154; woody: 27; ground: 137; Avg. spp./site: 28.1; std dev.: 10.0, 9 site(s)

Basal area: Avg./site: 10.3 m<sup>2</sup>/ha, range: 6.0 - 17 m<sup>2</sup>/ha, std. deviation: 4 m<sup>2</sup>/ha, 10 site(s)

Structural formation: Woodland: 73%; open-woodland: 18%; open-forest: 9%, 11 site(s)

Representative sites: 26062, 26075, 26156, 26157, 26158, 26942, 37446, 37907, 37933, 37937, 37944.

**Stratum: E**

Height avg. = 30.0m, 1 site  
 Crown cover avg. = 0.6%, 1 site  
 Stem density/ha avg. = 40, 1 site

*Frequent species (cover, frequency): Eucalyptus tereticornis (1, 9%)*

**Stratum: T1**

Height avg. = 16.9m, range 10-26m, 11 sites  
 Crown cover avg. = 34.3%, range 2.9-61.4%, 11 sites  
 Stem density/ha avg. = 207, range 40-480, 9 sites

*Dominant species (relative cover, frequency): Eucalyptus platyphylla (83, 55%), Eucalyptus tereticornis (58, 55%), Corymbia clarksoniana (38, 45%), Corymbia tessellaris (4, 27%)*

*Frequent species (cover, frequency): Eucalyptus platyphylla (21, 55%), Eucalyptus tereticornis (27, 55%), Corymbia clarksoniana (12, 45%), Corymbia tessellaris (1, 27%), Eucalyptus moluccana (1, 18%), Corymbia dallachiana (9%), Eucalyptus crebra (1, 9%), Eucalyptus leptophleba (8, 9%), Lophostemon suaveolens (9%)*

Dominant species: Relative cover (mean of cover of species / total cover of all species in that stratum for all values > zero) and frequency (percent of total sites) ordered by decreasing relative abundance. Up to five most dominant species with frequency > 20% listed for each stratum.

Frequent species: Cover (mean of all values > zero) and frequency (percent of total sites) of all species occurring in more than 5% of sites ordered by decreasing frequency. Ground layer species are listed as either graminoid or forb.

Naturalised species have an asterisk (\*) after the name. indet. after listed name = indeterminate species or genus



**Stratum: T2**

Height avg. = 8.0m, range 3.5-15m, 11 sites

Crown cover avg. = 6.1%, range 0.0-24.7%, 11 sites

Stem density/ha avg. = 205, range 20-520, 8 sites

*Dominant species (relative cover, frequency): Eucalyptus platyphylla (76, 27%), Eucalyptus tereticornis (52, 36%), Corymbia clarksoniana (43, 36%), Corymbia tessellaris (26, 36%)*

*Frequent species (cover, frequency): Corymbia clarksoniana (36%), Corymbia tessellaris (5, 36%), Eucalyptus tereticornis (1, 36%), Lophostemon suaveolens (36%), Eucalyptus platyphylla (2, 27%), Acacia crassicarpa (1, 9%), Corymbia dallachiana (1, 9%), Eucalyptus crebra (6, 9%), Eucalyptus leptophleba (9%), Eucalyptus moluccana (1, 9%), Grevillea glauca (9%), Melaleuca nervosa (8, 9%), Pandanus indet. (9%), Petalostigma pubescens (4, 9%)*

**Stratum: T3**

Height avg. = 4.0m, 1 site

Crown cover avg. = 4.4%, 1 site

Stem density/ha avg. = 640, 1 site

*Frequent species (cover, frequency): Acacia crassicarpa (4, 9%), Corymbia clarksoniana (9%)*

**Stratum: S1**

Height avg. = 1.7m, range 1-3m, 10 sites

Crown cover avg. = 8.7%, range 0.0-29.2%, 10 sites

Stem density/ha avg. = 2203, range 40-6120, 6 sites

*Dominant species (relative cover, frequency): Ficus opposita (44, 27%), Petalostigma pubescens (37, 27%), Acacia crassicarpa (27, 45%), Corymbia clarksoniana (17, 27%)*

*Frequent species (cover, frequency): Acacia crassicarpa (45%), Corymbia clarksoniana (27%), Ficus opposita (27%), Petalostigma pubescens (1, 27%), Eucalyptus platyphylla (1, 18%), Lantana camara\* (13, 18%), Acacia holosericea (9%), Acacia mangium (9%), Acacia simsii (13, 9%), Alphitonia excelsa (9%), Alphitonia pomaderroides (9%), Eucalyptus tereticornis (9%), Grevillea glauca (1, 9%), Lophostemon suaveolens (9%), Melaleuca nervosa (9%), Persoonia falcata (9%), Pogonolobus reticulatus (9%), Sida cordifolia\* (9%), Syzygium indet. (9%), Urena lobata\* (9%), Xanthorrhoea johnsonii (11, 9%)*

Dominant species: Relative cover (mean of cover of species / total cover of all species in that stratum for all values > zero) and frequency (percent of total sites) ordered by decreasing relative abundance. Up to five most dominant species with frequency > 20% listed for each stratum.

Frequent species: Cover (mean of all values > zero) and frequency (percent of total sites) of all species occurring in more than 5% of sites ordered by decreasing frequency. Ground layer species are listed as either graminoid or forb.

Naturalised species have an asterisk (\*) after the name. indet. after listed name = indeterminate species or genus

**Stratum: G**

Height avg. = 0.5m, range 0.1-0.8m, 9 sites

PFC avg. = 59.7%, range 20-96%, 9 sites

*Dominant species (relative cover, frequency): Imperata cylindrica (31, 55%), Praxelis clematidea\* (18, 36%), Sporobolus jacquemontii\* (13, 36%), Flemingia parviflora (5, 27%), Themeda triandra (5, 36%)*

*Frequent species (cover, frequency): GRAMINOIDS: Heteropogon contortus (64%), Imperata cylindrica (18, 55%), Arundinella nepalensis (3, 36%), Sporobolus jacquemontii\* (10, 36%), Themeda triandra (3, 36%), Chrysopogon fallax (2, 27%), Heteropogon triticeus (27%), Mnesithea rottboellioides (1, 27%), Paspalum paniculatum\* (1, 27%), Cyperus haspan subsp. juncooides (36, 18%), Cyperus indet. (2, 18%), Dichanthium indet. (4, 18%), Digitaria parviflora (18%), Eragrostis spartinooides (1, 18%), Fuirena ciliaris (18%), Leersia hexandra (23, 18%), Melinis repens\* (1, 18%), Setaria pumila subsp. pumila\* (18%), Sporobolus pyramidalis\* (18%), Alloteropsis semialata (9%), Aristida indet. (14, 9%), Aristida queenslandica var. dissimilis (3, 9%), Capillipedium parviflorum (9%), Chrysopogon oliganthus (9%), Cyperus procerus (9%), Digitaria indet. (9%), Ectrosia leporina (9%), Eragrostis brownii (1, 9%), Eragrostis elongata (2, 9%), Eragrostis indet. (9%), Eragrostis sororia (1, 9%), Eriachne indet. (6, 9%), Eriachne stipacea (4, 9%), Fimbristylis dichotoma (1, 9%), Ischaemum australe var. villosum (9%), Ischaemum indet. (6, 9%), Megathyrsus maximus\* (9%), Panicum indet. (9%), Panicum mindanaense (9%), Paspalidium distans (2, 9%), Paspalidium indet. (9%), Paspalum scrobiculatum (6, 9%), Poaceae indet. (5, 9%), Sarga plumosum (9%), Schizachyrium fragile (20, 9%), Scleria indet. (9%), Sehima nervosum (9%), Themeda quadrivalvis\* (3, 9%), Whiteochloa airoides (9%)*

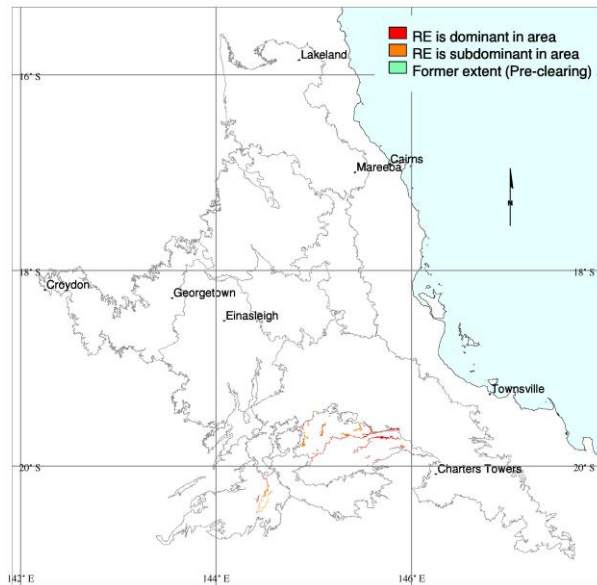
*FORBS: Stylosanthes scabra\* (45%), Praxelis clematidea\* (12, 36%), Rostellularia adscendens (1, 36%), Spermacoce indet. (36%), Urena lobata\* (1, 36%), Flemingia parviflora (4, 27%), Glycine tomentella (27%), Oxalis radicata (27%), Ruellia tuberosa\* (27%), Sida indet. (3, 27%), Asteraceae indet. (1, 18%), Desmodium gangeticum (1, 18%), Dianella caerulea (18%), Evolvulus alsinoides (18%), Hypericum gramineum (1, 18%), Indigofera indet. (1, 18%), Lomandra longifolia (3, 18%), Lomandra multiflora (18%), Phyllanthus indet. (1, 18%), Rotala tripartita (2, 18%), Sida spinosa\* (1, 18%), Triumphetta rhomboidea\* (2, 18%), Wahlenbergia gracilis (18%), Acmea grandiflora (1, 9%), Acmea grandiflora var. brachyglossa (1, 9%), Aeschynomene villosa\* (1, 9%), Alphitonia excelsa (9%), Alternanthera nodiflora (9%), Bidens bipinnata\* (9%), Bidens pilosa\* (9%), Breynia oblongifolia (9%), Buchnera urticifolia (9%), Cajanus indet. (8, 9%), Centella asiatica (9%), Centrolepis exserta (9%), Chamaecrista concinna (9%), Chamaecrista mimosoides (9%), Chamaecrista rotundifolia (9%), Chamaesyce hirta\* (9%), Corymbia clarksoniana (9%), Crassocephalum crepidioides\* (9%), Crotalaria indet. (9%), Crotalaria montana (9%), Dodonaea lanceolata (9%), Emilia sonchifolia\* (1, 9%), Eucalyptus platyphylla (1, 9%), Fabaceae indet. (9%), Ficus opposita (10, 9%), Flueggea virosa (9%), Flueggea virosa subsp. melanthesoides (9%), Gomphocarpus physocarpus\* (9%), Grewia retusifolia (9%), Hygrophila angustifolia (7, 9%), Hyptis suaveolens\* (9%), Indigofera hirsuta (9%), Lantana camara\* (1, 9%), Lobelia indet. (9%), Ludwigia octovalvis (9%), Mecardonia procumbens\* (2, 9%), Mimosa pudica\* (6, 9%), Mitrasacme indet. (9%), Oldenlandia laceyi (9%), Petalostigma pubescens (9%), Polygala indet. (9%), Poranthera microphylla (9%), Richardia brasiliensis\* (9%), Rotala mexicana (9%), Salvia misella\* (8, 9%), Sida cordifolia\* (9%), Sida hackettiana (9%), Sigesbeckia orientalis (9%), Solanum americanum subsp. nodiflorum (9%), Sonchus indet. (3, 9%), Spermacoce latifolia\* (9%), Stylidium eriorhizum (9%), Stylosanthes indet. (9%), Tephrosia filipes (9%), Trichodesma zeylanicum (9%), Uraria lagopodioides (4, 9%), Veronica plebeia (1, 9%), Vigna vexillata (9, 9%), Vigna vexillata var. angustifolia (9%), Wahlenbergia communis (9%), Xanthorrhoea johnsonii (9%), Zornia indet. (9%)*

Dominant species: Relative cover (mean of cover of species / total cover of all species in that stratum for all values > zero) and frequency (percent of total sites) ordered by decreasing relative abundance. Up to five most dominant species with frequency > 20% listed for each stratum.

Frequent species: Cover (mean of all values > zero) and frequency (percent of total sites) of all species occurring in more than 5% of sites ordered by decreasing frequency. Ground layer species are listed as either graminoid or forb.

Naturalised species have an asterisk (\*) after the name. indet. after listed name = indeterminate species or genus

**Casuarina cunninghamiana and/or Eucalyptus camaldulensis or E. tereticornis fringing open-forest on channels and levees on basalt flows**



M. Newton

Pre-clearing area (ha), remnant area (ha) and per cent remaining: 12,158 12,075 99%

Species recorded: Total: 40; woody: 10; ground: 35; Avg. spp./site: 14.0; std dev.: 2.0, 2 site(s)

Basal area: Avg./site: 10.0 m<sup>2</sup>/ha, range: 1.0 - 24 m<sup>2</sup>/ha, std. deviation: 10 m<sup>2</sup>/ha, 5 site(s)

Structural formation: Woodland: 40%; open-forest: 40%; open-woodland: 20%, 5 site(s)

Representative sites: 26532, 26694, 26867, 26936, 26937.

**Stratum: T1**

Height avg. = 16.2m, range 11-22m, 5 sites

Crown cover avg. = 50.0%, range 9.8-73.3%, 5 sites

Stem density/ha avg. = 320, range 120-520, 3 sites

*Dominant species (relative cover, frequency): Casuarina cunninghamiana (67, 60%), Cryptostegia grandiflora\* (4, 40%)*

*Frequent species (cover, frequency): Casuarina cunninghamiana (45, 60%), Cryptostegia grandiflora\* (1, 40%), Corymbia tessellaris (20%), Eucalyptus camaldulensis (27, 20%), Eucalyptus tereticornis (10, 20%), Melaleuca bracteata (72, 20%)*

**Stratum: T2**

Height avg. = 12.0m, range 10-14m, 3 sites

Crown cover avg. = 30.5%, range 2.9-70.6%, 3 sites

Stem density/ha avg. = 20, 1 site

*Dominant species (relative cover, frequency): Casuarina cunninghamiana (100, 40%)*

*Frequent species (cover, frequency): Casuarina cunninghamiana (11, 40%), Cryptostegia grandiflora\* (3, 20%), Melaleuca fluviatilis (16, 20%), Melaleuca leucadendra (49, 20%), Melaleuca trichostachya (20%)*

**Stratum: S1**

Height avg. = 3.3m, range 1-5m, 3 sites

Crown cover avg. = 1.0%, range 0.0-2.9%, 3 sites

Stem density/ha avg. = 60, 1 site

*Dominant species (relative cover, frequency): Melaleuca bracteata (100, 40%)*

*Frequent species (cover, frequency): Melaleuca bracteata (1, 40%), Casuarina cunninghamiana (20%), Cryptostegia grandiflora\* (20%), Ficus opposita (20%)*

Dominant species: Relative cover (mean of cover of species / total cover of all species in that stratum for all values > zero) and frequency (percent of total sites) ordered by decreasing relative abundance. Up to five most dominant species with frequency > 20% listed for each stratum.

Frequent species: Cover (mean of all values > zero) and frequency (percent of total sites) of all species occurring in more than 5% of sites ordered by decreasing frequency. Ground layer species are listed as either graminoid or forb.

Naturalised species have an asterisk (\*) after the name. indet. after listed name = indeterminate species or genus

**Stratum: G**

Height avg. = 0.5m, range 0.4-0.5m, 2 sites

PFC avg. = 49.5%, range 27-72%, 2 sites

*Frequent species (cover, frequency): GRAMINOIDS: Chionachne cyathopoda (40%), Arundinella nepalensis (20%), Cyperus distans (20%), Cyperus flavidus (2, 20%), Dichanthium aristatum\* (24, 20%), Eragrostis indet. (20%), Fimbristylis sieberiana (2, 20%), Imperata cylindrica (10, 20%), Leersia hexandra (24, 20%), Poaceae indet. (10, 20%), Schoenoplectus mucronatus (4, 20%)*

*FORBS: Ageratum houstonianum\* (20%), Alternanthera ficoidea\* (5, 20%), Aponogeton queenslandicus (20%), Argemone ochroleuca (20%), Bacopa monnieri (20%), Heliotropium ovalifolium (20%), Lomandra longifolia (5, 20%), Myriophyllum verrucosum (20%), Nelsonia campestris (5, 20%), Nymphaea nouchali (20%), Passiflora foetida\* (2, 20%), Typha indet. (6, 20%)*

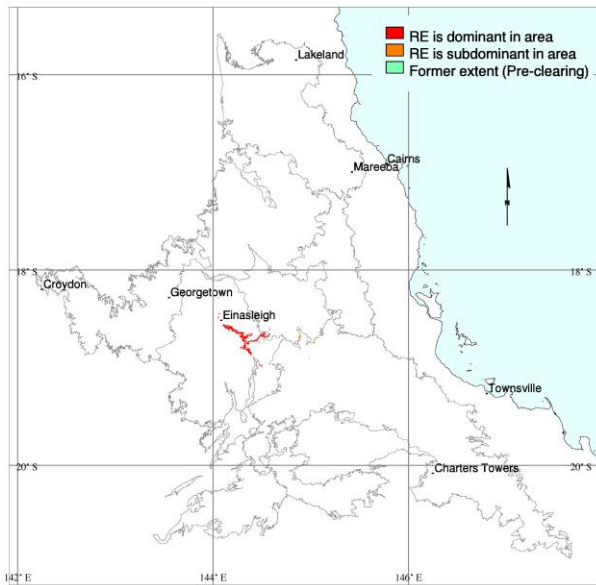
---

Dominant species: Relative cover (mean of cover of species / total cover of all species in that stratum for all values > zero) and frequency (percent of total sites) ordered by decreasing relative abundance. Up to five most dominant species with frequency > 20% listed for each stratum.

Frequent species: Cover (mean of all values > zero) and frequency (percent of total sites) of all species occurring in more than 5% of sites ordered by decreasing frequency. Ground layer species are listed as either graminoid or forb.

Naturalised species have an asterisk (\*) after the name. indet. after listed name = indeterminate species or genus

**Eucalyptus coolabah +/- Eucalyptus leptophleba woodland on alluvial plains**



M. Newton

Pre-clearing area (ha), remnant area (ha) and per cent remaining: 13,106 13,082 100%

Species recorded: Total: 55; woody: 15; ground: 47; Avg. spp./site: 23.0; std dev.: 1.0, 2 site(s)

Basal area: Avg./site: 3.4 m<sup>2</sup>/ha, range: 2.1 - 4 m<sup>2</sup>/ha, std. deviation: 1 m<sup>2</sup>/ha, 3 site(s)

Structural formation: Woodland: 67%; open-woodland: 33%, 3 site(s)

Representative sites: 26121, 26122, 37335.

**Stratum: T1**

Height avg. = 10.3m, range 9-11m, 3 sites

Crown cover avg. = 20.3%, range 15.9-27.0%, 3 sites

Stem density/ha avg. = 87, range 60-120, 3 sites

*Dominant species (relative cover, frequency): Eucalyptus coolabah (92, 67%), Grevillea striata (66, 33%), Eucalyptus leptophleba (19, 67%), Eucalyptus camaldulensis (12, 33%)*

*Frequent species (cover, frequency): Eucalyptus coolabah (19, 67%), Eucalyptus leptophleba (3, 67%), Lysiphyllum indet. (67%), Corymbia confertiflora (33%), Corymbia dallachiana (33%), Eucalyptus camaldulensis (3, 33%), Grevillea striata (9, 33%)*

**Stratum: T2**

Height avg. = 4.0m, 1 site

Crown cover avg. = 0.0%, 1 site

Stem density/ha avg. = 40, 1 site

*Dominant species (relative cover, frequency): Melaleuca trichostachya (50, 33%), Lysiphyllum hookeri (50, 33%)*

*Frequent species (cover, frequency): Lysiphyllum hookeri (33%), Melaleuca trichostachya (33%)*

Dominant species: Relative cover (mean of cover of species / total cover of all species in that stratum for all values > zero) and frequency (percent of total sites) ordered by decreasing relative abundance. Up to five most dominant species with frequency > 20% listed for each stratum.

Frequent species: Cover (mean of all values > zero) and frequency (percent of total sites) of all species occurring in more than 5% of sites ordered by decreasing frequency. Ground layer species are listed as either graminoid or forb.

Naturalised species have an asterisk (\*) after the name. indet. after listed name = indeterminate species or genus

**Stratum: S1**

Height avg. = 1.7m, range 1-2.5m, 3 sites

Crown cover avg. = 0.0%, range 0.0-0.0%, 3 sites

Stem density/ha avg. = 47, range 20-80, 3 sites

*Dominant species (relative cover, frequency): Grevillea striata (50, 33%), Atalaya hemiglauca (35, 67%), Sesbania cannabina (33, 33%), Lysiphyllum hookeri (33, 33%), Eucalyptus camaldulensis (33, 33%)*

*Frequent species (cover, frequency): Atalaya hemiglauca (67%), Carissa lanceolata (33%), Eremophila debilis (33%), Eremophila mitchellii (33%), Eucalyptus camaldulensis (33%), Grevillea striata (33%), Lysiphyllum hookeri (33%), Owenia acidula (33%), Sesbania cannabina (33%)*

**Stratum: G**

Height avg. = 0.4m, range 0.3-0.5m, 2 sites

PFC avg. = 64.5%, range 50-79%, 2 sites

*Dominant species (relative cover, frequency): Bothriochloa pertusa\* (61, 33%), Bothriochloa decipiens var. cloncurrrensensis (49, 33%), Enteropogon ramosus (19, 33%), Aristida pruinosa (16, 33%), Urochloa mosambicensis\* (16, 33%)*

*Frequent species (cover, frequency): GRAMINOIDS: Chrysopogon fallax (67%), Aristida pruinosa (8, 33%), Bothriochloa bladhii (6, 33%), Bothriochloa decipiens var. cloncurrrensensis (25, 33%), Bothriochloa pertusa\* (47, 33%), Chloris lobata (33%), Cyperus fulvus (33%), Cyperus indet. (33%), Dichanthium aristatum\* (33%), Echinochloa colona\* (33%), Enneapogon polyphyllus (33%), Enteropogon ramosus (10, 33%), Eragrostis cumingii (1, 33%), Heteropogon contortus (1, 33%), Paspalidium indet. (33%), Perotis rara (5, 33%), Urochloa mosambicensis\* (12, 33%)*

*FORBS: Stylosanthes scabra\* (67%), Alternanthera ficoidea\* (33%), Ammannia multiflora (33%), Basilicum polystachyon (33%), Boerhavia indet. (33%), Brunonia indet. (33%), Grewia retusifolia (33%), Hibiscus indet. (33%), Indigofera linifolia (33%), Malvaceae indet. (33%), Malvastrum americanum\* (33%), Nelsonia campestris (33%), Neptunia gracilis (33%), Neptunia indet. (33%), Persicaria indet. (33%), Sesbania cannabina (33%), Sida spinosa\* (33%), Stylosanthes humilis\* (2, 33%), Tephrosia filipes (33%), Vigna lanceolata (8, 33%), Xanthium occidentale\* (1, 33%)*

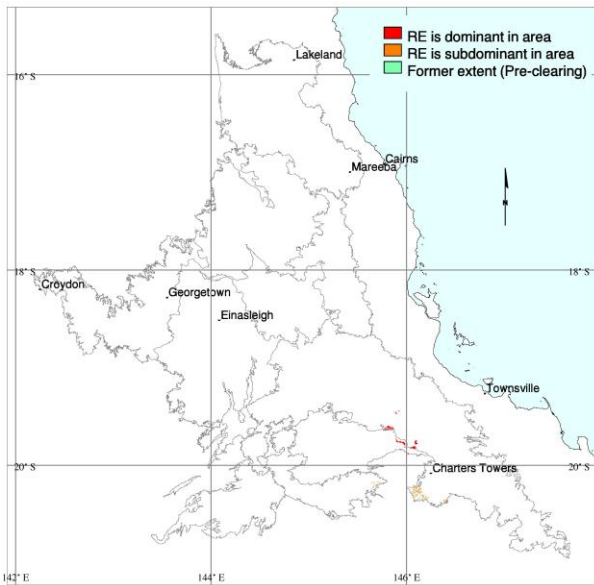
Dominant species: Relative cover (mean of cover of species / total cover of all species in that stratum for all values > zero) and frequency (percent of total sites) ordered by decreasing relative abundance. Up to five most dominant species with frequency > 20% listed for each stratum.

Frequent species: Cover (mean of all values > zero) and frequency (percent of total sites) of all species occurring in more than 5% of sites ordered by decreasing frequency. Ground layer species are listed as either graminoid or forb.

Naturalised species have an asterisk (\*) after the name. indet. after listed name = indeterminate species or genus



**Eucalyptus coolabah open-woodland on alluvial plains**



M. Newton

Pre-clearing area (ha), remnant area (ha) and per cent remaining: 4,750 4,714 99%

Species recorded: Total: 26; woody: 3; ground: 24; Average species per site and standard deviation not available

Basal area: Avg./site: 4.4 m<sup>2</sup>/ha, range: 2.0 - 7 m<sup>2</sup>/ha, std. deviation: 2 m<sup>2</sup>/ha, 2 site(s)

Structural formation: Woodland: 50%; open-woodland: 50%, 2 site(s)

Representative sites: 26530, 27093.

**Stratum: T1**

Height avg. = 17.0m, range 14-20m, 2 sites  
 Crown cover avg. = 25.9%, range 18.1-33.7%, 2 sites  
 Stem density/ha avg. = 40, 1 site  
*Dominant species (relative cover, frequency): Eucalyptus coolabah (100, 100%)*  
*Frequent species (cover, frequency): Eucalyptus coolabah (26, 100%)*

**Stratum: S1**

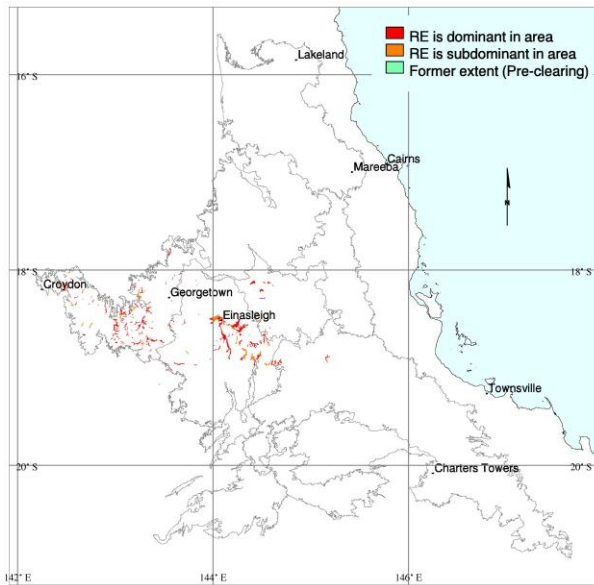
Height avg. = 3.0m, 1 site  
 Crown cover avg. = 0.6%, 1 site  
*Dominant species (relative cover, frequency): Cryptostegia grandiflora\* (73, 50%), Parkinsonia aculeata\* (27, 50%)*  
*Frequent species (cover, frequency): Cryptostegia grandiflora\* (1, 50%), Parkinsonia aculeata\* (50%)*

Dominant species: Relative cover (mean of cover of species / total cover of all species in that stratum for all values > zero) and frequency (percent of total sites) ordered by decreasing relative abundance. Up to five most dominant species with frequency > 20% listed for each stratum.

Frequent species: Cover (mean of all values > zero) and frequency (percent of total sites) of all species occurring in more than 5% of sites ordered by decreasing frequency. Ground layer species are listed as either graminoid or forb.

Naturalised species have an asterisk (\*) after the name. indet. after listed name = indeterminate species or genus

**Eucalyptus microneura +/- Corymbia spp. +/- E. leptophleba woodland on alluvial plains**



M. Newton

Pre-clearing area (ha), remnant area (ha) and per cent remaining: 40,590 39,861 98%

Species recorded: Total: 18; woody: 10; ground: 11; Avg. spp./site: 11.0; std dev.: 0.0, 2 site(s)

Basal area: Avg./site: 4.8 m<sup>2</sup>/ha, range: 4.0 - 6 m<sup>2</sup>/ha, std. deviation: 1 m<sup>2</sup>/ha, 2 site(s)

Structural formation: Low woodland: 50%; low open-woodland: 50%, 2 site(s)

Representative sites: 26699, 26751.

**Stratum: T1**

Height avg. = 8.0m, range 7-9m, 2 sites

Crown cover avg. = 22.7%, range 11.8-33.7%, 2 sites

Stem density/ha avg. = 170, range 80-260, 2 sites

Dominant species (relative cover, frequency): *Eucalyptus microneura* (67, 100%), *Lysiphyllum indet.* (67, 50%)

Frequent species (cover, frequency): *Eucalyptus microneura* (11, 100%), *Atalaya hemiglauca* (50%), *Lysiphyllum indet.* (18, 50%), *Melaleuca viridiflora* (50%), *Terminalia platyptera* (50%)

**Stratum: T2**

Height avg. = 5.0m, 1 site

Crown cover avg. = 0.0%, 1 site

Dominant species (relative cover, frequency): *Grevillea striata* (50, 50%), *Atalaya hemiglauca* (50, 50%)

Frequent species (cover, frequency): *Atalaya hemiglauca* (50%), *Grevillea striata* (50%)

**Stratum: S1**

Height avg. = 1.8m, range 1.5-2m, 2 sites

Crown cover avg. = 0.0%, range 0.0-0.0%, 2 sites

Dominant species (relative cover, frequency): *Carissa lanceolata* (100, 50%), *Melaleuca citrolens* (33, 50%), *Gardenia vilhelmii* (33, 50%), *Ficus indet.* (33, 50%)

Frequent species (cover, frequency): *Carissa lanceolata* (50%), *Ficus indet.* (50%), *Gardenia vilhelmii* (50%), *Melaleuca citrolens* (50%)

Dominant species: Relative cover (mean of cover of species / total cover of all species in that stratum for all values > zero) and frequency (percent of total sites) ordered by decreasing relative abundance. Up to five most dominant species with frequency > 20% listed for each stratum.

Frequent species: Cover (mean of all values > zero) and frequency (percent of total sites) of all species occurring in more than 5% of sites ordered by decreasing frequency. Ground layer species are listed as either graminoid or forb.

Naturalised species have an asterisk (\*) after the name. indet. after listed name = indeterminate species or genus

**Stratum: G**

Height avg. = 0.4m, range 0.3-0.5m, 2 sites

PFC avg. = 37.5%, range 25-50%, 2 sites

*Dominant species (relative cover, frequency):* *Aristida indet.* (97, 50%), *Tribulus indet.* (13, 50%), *Panicum indet.* (13, 50%), *Malvastrum americanum var. americanum\** (13, 50%), *Digitaria indet.* (13, 50%)

*Frequent species (cover, frequency): GRAMINOIDS:* *Eragrostis indet.* (100%), *Aristida indet.* (14, 50%), *Bothriochloa indet.* (50%), *Brachyachne convergens* (50%), *Chloris pectinata* (50%), *Cyperaceae indet.* (50%), *Digitaria indet.* (50%), *Panicum indet.* (50%)

*FORBS:* *Sida indet.* (100%), *Malvastrum americanum var. americanum\** (50%), *Tribulus indet.* (50%)

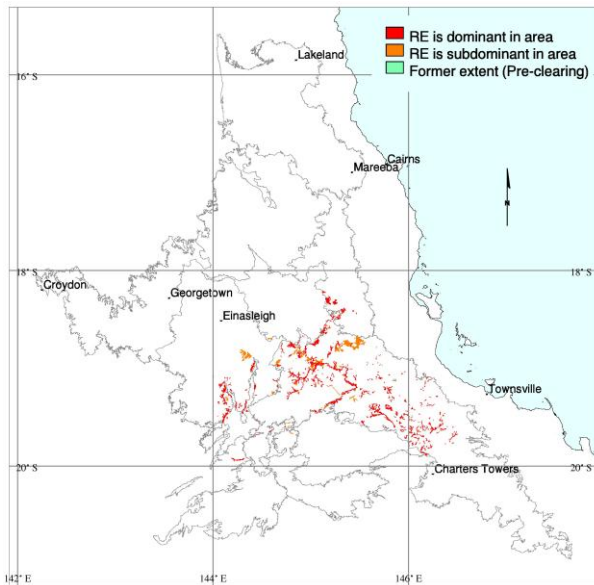
---

Dominant species: Relative cover (mean of cover of species / total cover of all species in that stratum for all values > zero) and frequency (percent of total sites) ordered by decreasing relative abundance. Up to five most dominant species with frequency > 20% listed for each stratum.

Frequent species: Cover (mean of all values > zero) and frequency (percent of total sites) of all species occurring in more than 5% of sites ordered by decreasing frequency. Ground layer species are listed as either graminoid or forb.

Naturalised species have an asterisk (\*) after the name. indet. after listed name = indeterminate species or genus

**Eucalyptus crebra and Corymbia clarksoniana and/or C. dallachiana open-woodland on levees and terraces**



M. Newton

Pre-clearing area (ha), remnant area (ha) and per cent remaining: 96,906 93,719 97%

Species recorded: Total: 112; woody: 30; ground: 83; Avg. spp./site: 35.3; std dev.: 3.1, 3 site(s)

Basal area: Avg./site: 5.4 m<sup>2</sup>/ha, range: 2.5 - 11 m<sup>2</sup>/ha, std. deviation: 3 m<sup>2</sup>/ha, 6 site(s)

Structural formation: Woodland: 67%; open-woodland: 33%, 6 site(s)

Representative sites: 26110, 26309, 26539, 26660, 26915, 26921.

**Stratum: T1**

Height avg. = 16.3m, range 12-23m, 6 sites

Crown cover avg. = 23.8%, range 6.1-46.5%, 6 sites

Stem density/ha avg. = 72, range 20-140, 5 sites

*Dominant species (relative cover, frequency): Eucalyptus crebra (60, 67%), Eucalyptus platyphylla (50, 33%), Corymbia dallachiana (31, 50%), Corymbia clarksoniana (19, 50%)*

*Frequent species (cover, frequency): Eucalyptus crebra (7, 67%), Corymbia clarksoniana (5, 50%), Corymbia dallachiana (11, 50%), Eucalyptus platyphylla (13, 33%), Brachychiton indet. (17%), Corymbia erythrophloia (4, 17%), Corymbia tessellaris (17%), Eucalyptus camaldulensis (14, 17%), Eucalyptus leptophleba (17%), Eucalyptus tereticornis (17%), Pleiogonium timorense (2, 17%)*

**Stratum: T2**

Height avg. = 4.3m, range 4-5m, 3 sites

Crown cover avg. = 1.4%, range 0.6-2.9%, 4 sites

Stem density/ha avg. = 100, range 100-100, 2 sites

*Dominant species (relative cover, frequency): Corymbia clarksoniana (67, 33%), Eucalyptus crebra (58, 33%)*

*Frequent species (cover, frequency): Corymbia clarksoniana (1, 33%), Eucalyptus crebra (33%), Drypetes deplanchei (17%), Lophostemon grandiflorus (17%), Melaleuca nervosa (17%), Petalostigma pubescens (2, 17%), Terminalia aridicola (17%)*

Dominant species: Relative cover (mean of cover of species / total cover of all species in that stratum for all values > zero) and frequency (percent of total sites) ordered by decreasing relative abundance. Up to five most dominant species with frequency > 20% listed for each stratum.

Frequent species: Cover (mean of all values > zero) and frequency (percent of total sites) of all species occurring in more than 5% of sites ordered by decreasing frequency. Ground layer species are listed as either graminoid or forb.

Naturalised species have an asterisk (\*) after the name. indet. after listed name = indeterminate species or genus

**Stratum: S1**

Height avg. = 2.2m, range 1.5-4m, 4 sites

Crown cover avg. = 2.6%, range 0.6-6.1%, 4 sites

Stem density/ha avg. = 547, range 80-860, 3 sites

*Dominant species (relative cover, frequency): Carissa lanceolata (24, 33%)*

*Frequent species (cover, frequency): Carissa lanceolata (33%), Acacia holosericea (17%), Acacia julifera subsp. julifera (17%), Alphitonia pomaderroides (17%), Atalaya hemiglaucula (1, 17%), Breynia oblongifolia (17%), Carissa ovata (3, 17%), Corymbia clarksoniana (17%), Corymbia dallachiana (17%), Cryptostegia grandiflora\* (17%), Diospyros humilis (17%), Dolichandrone indet. (1, 17%), Eucalyptus camaldulensis (17%), Eucalyptus crebra (17%), Grewia retusifolia (17%), Hakea indet. (17%), Maytenus cunninghamii (17%), Melaleuca nervosa (17%), Petalostigma banksii (17%), Petalostigma pubescens (3, 17%)*

**Stratum: G**

Height avg. = 0.9m, range 0.5-1.6m, 3 sites

PFC avg. = 52.0%, range 37-63%, 3 sites

*Dominant species (relative cover, frequency): Heteropogon contortus (20, 50%), Grewia retusifolia (3, 33%), Rhynchosia minima (1, 33%), Themeda quadrivalvis\* (1, 33%), Abutilon indet. (1, 33%)*

*Frequent species (cover, frequency): GRAMINOIDS: Heteropogon contortus (11, 50%), Arundinella nepalensis (33%), Digitaria indet. (33%), Themeda quadrivalvis\* (1, 33%), Themeda triandra (33%), Aristida calycina var. praealta (17%), Aristida indet. (3, 17%), Aristida latifolia (2, 17%), Aristida pruinosa (2, 17%), Bothriochloa bladhii (5, 17%), Bothriochloa decipiens (17%), Bothriochloa decipiens var. cloncurrrensensis (19, 17%), Capillipedium parviflorum (17%), Chrysopogon fallax (17%), Chrysopogon indet. (4, 17%), Cyperus indet. (17%), Dichanthium sericeum (25, 17%), Enneapogon polyphyllus (17%), Enneapogon virens (3, 17%), Eragrostis cumingii (17%), Eragrostis speciosa (12, 17%), Eulalia aurea (17%), Fimbristylis indet. (17%), Iseilema vaginiflorum (3, 17%), Melinis repens\* (17%), Mnesithea rottboellioides (17%), Ophiuros exaltatus (17%), Panicum decompositum (17%), Panicum mitchellii (18, 17%), Schizachyrium pseudeulalia (17%)*

*FORBS: Abutilon indet. (1, 33%), Bidens pilosa\* (33%), Desmodium indet. (33%), Grewia retusifolia (2, 33%), Indigofera linifolia (33%), Indigofera linnaei (33%), Rhynchosia minima (1, 33%), Spermacoe indet. (33%), Zornia muriculata (1, 33%), Acanthospermum hispidum\* (17%), Alysicarpus vaginalis\* (17%), Asteraceae indet. (1, 17%), Brunoniella australis (17%), Cayratia indet. (2, 17%), Chamaesyce indet. (17%), Chamaesyce vachellii (17%), Crotalaria calycina (17%), Crotalaria indet. (17%), Cyanthillium cinereum (17%), Desmodium muelleri (17%), Fabaceae indet. (3, 17%), Glycine indet. (17%), Hyptis suaveolens\* (17%), Indigofera hirsuta (17%), Ipomoea indet. (2, 17%), Lomandra longifolia (17%), Mukia maderaspatana (17%), Ocimum tenuiflorum (1, 17%), Polygala indet. (17%), Polymeria longifolia (1, 17%), Rostellularia adscendens (17%), Sida cordifolia\* (17%), Sida hackettiana (17%), Stylosanthes scabra\* (17%), Triumfetta micracantha (17%), Vigna indet. (17%), Vigna vexillata var. angustifolia (17%), Vigna vexillata var. youngiana (17%)*

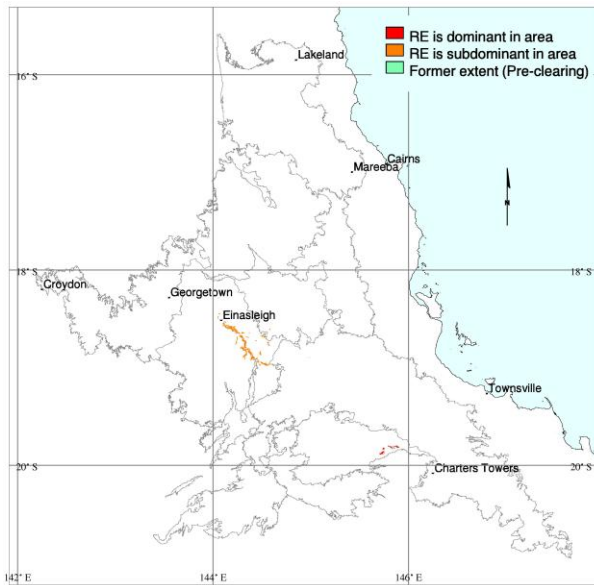
Dominant species: Relative cover (mean of cover of species / total cover of all species in that stratum for all values > zero) and frequency (percent of total sites) ordered by decreasing relative abundance. Up to five most dominant species with frequency > 20% listed for each stratum.

Frequent species: Cover (mean of all values > zero) and frequency (percent of total sites) of all species occurring in more than 5% of sites ordered by decreasing frequency. Ground layer species are listed as either graminoid or forb.

Naturalised species have an asterisk (\*) after the name. indet. after listed name = indeterminate species or genus



**Acacia tephрина open-forest on alluvial clay plains**



M. Newton

Pre-clearing area (ha), remnant area (ha) and per cent remaining: 3,510 3,075 88%

Species recorded: Total: 47; woody: 12; ground: 35; Avg. spp./site: 18.0; std dev.: 2.2, 3 site(s)

Basal area: Avg./site: 6.1 m<sup>2</sup>/ha, range: 4.3 - 8 m<sup>2</sup>/ha, std. deviation: 2 m<sup>2</sup>/ha, 2 site(s)

Structural formation: Open-forest: 67%; open-woodland: 33%, 3 site(s)

Representative sites: 25980, 26049, 27117.

**Stratum: T1**

Height avg. = 13.0m, range 10-16m, 3 sites

Crown cover avg. = 44.5%, range 7.9-67.8%, 3 sites

Stem density/ha avg. = 367, range 40-620, 3 sites

*Dominant species (relative cover, frequency): Acacia tephrina (100, 100%)*

*Frequent species (cover, frequency): Acacia tephrina (45, 100%)*

**Stratum: T2**

Height avg. = 8.0m, 1 site

Crown cover avg. = 11.8%, 1 site

Stem density/ha avg. = 80, 1 site

*Dominant species (relative cover, frequency): Acacia tephrina (100, 33%)*

*Frequent species (cover, frequency): Acacia tephrina (12, 33%)*

Dominant species: Relative cover (mean of cover of species / total cover of all species in that stratum for all values > zero) and frequency (percent of total sites) ordered by decreasing relative abundance. Up to five most dominant species with frequency > 20% listed for each stratum.

Frequent species: Cover (mean of all values > zero) and frequency (percent of total sites) of all species occurring in more than 5% of sites ordered by decreasing frequency. Ground layer species are listed as either graminoid or forb.

Naturalised species have an asterisk (\*) after the name. indet. after listed name = indeterminate species or genus



**Stratum: S1**

Height avg. = 1.5m, range 0.6-2.5m, 3 sites

Crown cover avg. = 0.6%, range 0.6-0.6%, 3 sites

Stem density/ha avg. = 440, range 100-780, 2 sites

*Dominant species (relative cover, frequency):* *Atalaya hemiglauca* (55, 67%), *Mimosaceae indet.* (25, 33%), *Glycine indet.* (25, 33%), *Dolichandrone heterophylla* (25, 33%), *Carissa indet.* (25, 33%)

*Frequent species (cover, frequency):* *Acacia tephрина* (67%), *Atalaya hemiglauca* (67%), *Acacia farnesiana\** (33%), *Canthium indet.* (33%), *Capparis lasiantha* (33%), *Carissa indet.* (33%), *Dolichandrone heterophylla* (33%), *Ehretia membranifolia* (33%), *Glycine indet.* (33%), *Lysiphyllum carronii* (33%), *Malvaceae indet.* (33%), *Mimosaceae indet.* (33%)

**Stratum: G**

Height avg. = 0.4m, range 0.25-0.4m, 3 sites

PFC avg. = 34.3%, range 10-80%, 3 sites

*Dominant species (relative cover, frequency):* *Paspalidium indet.* (45, 33%), *Alternanthera nana* (29, 33%), *Sporobolus caroli* (27, 33%), *Astrebla indet.* (27, 33%), *Urochloa mosambicensis\** (18, 33%)

*Frequent species (cover, frequency):* **GRAMINOIDS:** *Astrebla indet.* (3, 33%), *Bothriochloa pertusa\** (33%), *Brachyachne convergens* (33%), *Chloris indet.* (33%), *Chloris inflata\** (33%), *Dactyloctenium radulans* (33%), *Dichanthium indet.* (33%), *Heteropogon contortus* (33%), *Iseilema indet.* (1, 33%), *Paspalidium indet.* (5, 33%), *Pennisetum ciliare\** (33%), *Poaceae indet.* (33%), *Sporobolus caroli* (3, 33%), *Themeda indet.* (33%), *Urochloa mosambicensis\** (2, 33%)

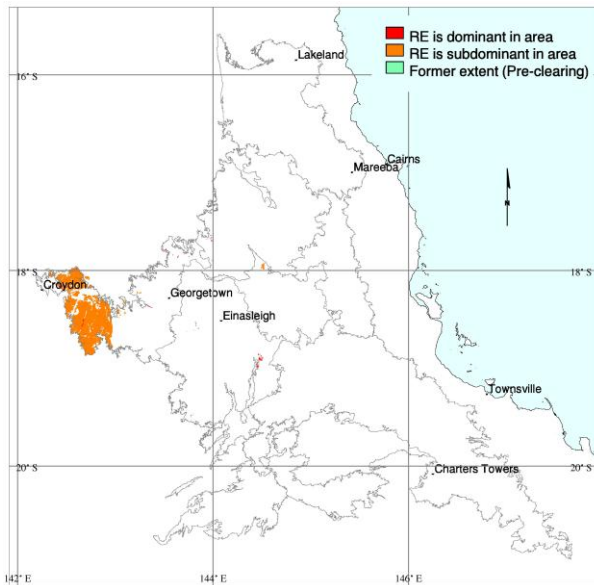
**FORBS:** *Asteraceae indet.* (100%), *Phyllanthus indet.* (100%), *Abutilon indet.* (33%), *Acanthospermum hispidum\** (33%), *Alternanthera nana* (3, 33%), *Alternanthera nodiflora* (33%), *Ammannia multiflora* (33%), *Angiosperm indet.* (33%), *Bacopa indet.* (33%), *Basilicum polystachyon* (33%), *Bidens bipinnata\** (33%), *Chenopodiaceae indet.* (33%), *Convolvulaceae indet.* (1, 33%), *Cucumis indet.* (33%), *Fabaceae indet.* (33%), *Lamiaceae indet.* (33%), *Polymeria indet.* (33%), *Rhynchosia minima* (33%), *Senna indet.* (33%), *Sida indet.* (1, 33%)

Dominant species: Relative cover (mean of cover of species / total cover of all species in that stratum for all values > zero) and frequency (percent of total sites) ordered by decreasing relative abundance. Up to five most dominant species with frequency > 20% listed for each stratum.

Frequent species: Cover (mean of all values > zero) and frequency (percent of total sites) of all species occurring in more than 5% of sites ordered by decreasing frequency. Ground layer species are listed as either graminoid or forb.

Naturalised species have an asterisk (\*) after the name. indet. after listed name = indeterminate species or genus

**Melaleuca viridiflora and/or M. citrolens low woodland +/- Corymbia spp. emergents on alluvial deposits**



M. Newton

Pre-clearing area (ha), remnant area (ha) and per cent remaining: 18,057 18,006 100%

Species recorded: Total: 49; woody: 15; ground: 36; Avg. spp./site: 16.7; std dev.: 4.1, 3 site(s)

Basal area: Avg./site: 4.6 m<sup>2</sup>/ha, range: 1.0 - 8 m<sup>2</sup>/ha, std. deviation: 3 m<sup>2</sup>/ha, 4 site(s)

Structural formation: Low woodland: 50%; tall shrubland: 25%; low open-woodland: 25%, 4 site(s)

Representative sites: 23779, 26234, 26296, 26714.

**Stratum: E**

Height avg. = 11.3m, range 10-14m, 3 sites

Crown cover avg. = 2.0%, range 0.0-4.4%, 3 sites

Stem density/ha avg. = 27, range 20-40, 3 sites

*Dominant species (relative cover, frequency): Corymbia polycarpa (100, 25%), Corymbia dallachiana (100, 25%), Corymbia clarksoniana (100, 25%)*

*Frequent species (cover, frequency): Corymbia clarksoniana (25%), Corymbia dallachiana (1, 25%), Corymbia polycarpa (5, 25%)*

**Stratum: T1**

Height avg. = 5.0m, range 4-6m, 4 sites

Crown cover avg. = 15.4%, range 6.1-31.4%, 4 sites

Stem density/ha avg. = 613, range 360-1040, 3 sites

*Dominant species (relative cover, frequency): Acacia julifera (81, 25%), Melaleuca viridiflora (71, 75%), Melaleuca citrolens (50, 50%), Petalostigma pubescens (4, 25%)*

*Frequent species (cover, frequency): Melaleuca viridiflora (15, 75%), Melaleuca citrolens (3, 50%), Acacia holosericea (25%), Acacia julifera (5, 25%), Corymbia confertiflora (25%), Corymbia polycarpa (25%), Pandanus indet. (25%), Petalostigma banksii (25%), Petalostigma pubescens (1, 25%)*

Dominant species: Relative cover (mean of cover of species / total cover of all species in that stratum for all values > zero) and frequency (percent of total sites) ordered by decreasing relative abundance. Up to five most dominant species with frequency > 20% listed for each stratum.

Frequent species: Cover (mean of all values > zero) and frequency (percent of total sites) of all species occurring in more than 5% of sites ordered by decreasing frequency. Ground layer species are listed as either graminoid or forb.

Naturalised species have an asterisk (\*) after the name. indet. after listed name = indeterminate species or genus

**Stratum: S1**

Height avg. = 1.8m, range 1.5-2m, 4 sites

Crown cover avg. = 0.9%, range 0.0-2.9%, 4 sites

Stem density/ha avg. = 1890, range 1600-2180, 2 sites

*Dominant species (relative cover, frequency): Melaleuca citrolens (99, 25%), Melaleuca viridiflora (57, 50%), Petalostigma banksii (51, 50%), Dolichandrone heterophylla (23, 50%), Acacia holosericea (16, 25%)*

*Frequent species (cover, frequency): Alphitonia pomaderroides (50%), Dolichandrone heterophylla (50%), Melaleuca viridiflora (1, 50%), Petalostigma banksii (50%), Acacia bidwillii (25%), Acacia holosericea (25%), Acacia julifera (25%), Corymbia polycarpa (25%), Gardenia vilhelmii (25%), Melaleuca citrolens (3, 25%), Pandanus indet. (25%)*

**Stratum: G**

Height avg. = 0.4m, range 0.3-0.5m, 3 sites

PFC avg. = 70.3%, range 61-83%, 3 sites

*Dominant species (relative cover, frequency): Capillipedium parviflorum (84, 25%), Schizachyrium indet. (44, 75%), Eriachne indet. (15, 25%), Alphitonia pomaderroides (15, 25%), Aristida indet. (12, 25%)*

*Frequent species (cover, frequency): GRAMINOIDS: Schizachyrium indet. (34, 75%), Aristida indet. (8, 25%), Aristida jerichoensis var. subspinulifera (25%), Brachyachne convergens (25%), Capillipedium parviflorum (52, 25%), Cyperus indet. (25%), Eragrostis indet. (4, 25%), Eriachne armitii (5, 25%), Eriachne indet. (10, 25%), Heteropogon contortus (5, 25%), Heteropogon triticeus (25%), Panicum indet. (25%), Perotis rara (1, 25%), Rhynchospora indet. (3, 25%), Setaria indet. (2, 25%), Themeda triandra (25%)*

*FORBS: Alphitonia pomaderroides (10, 25%), Asteraceae indet. (1, 25%), Blumea indet. (2, 25%), Buchnera linearis (1, 25%), Desmodium indet. (25%), Evolvulus indet. (1, 25%), Fabaceae indet. (25%), Indigofera indet. (25%), Malvastrum americanum var. americanum\* (25%), Melaleuca viridiflora (1, 25%), Mitrasacme indet. (25%), Pimelea indet. (25%), Polycarpaea indet. (1, 25%), Pouteria pohlmiana (25%), Spermacoce indet. (25%), Stylosanthes scabra\* (2, 25%), Zornia adenophora (25%)*

---

Dominant species: Relative cover (mean of cover of species / total cover of all species in that stratum for all values > zero) and frequency (percent of total sites) ordered by decreasing relative abundance. Up to five most dominant species with frequency > 20% listed for each stratum.

Frequent species: Cover (mean of all values > zero) and frequency (percent of total sites) of all species occurring in more than 5% of sites ordered by decreasing frequency. Ground layer species are listed as either graminoid or forb.

Naturalised species have an asterisk (\*) after the name. indet. after listed name = indeterminate species or genus