



Regional Ecosystem Technical Descriptions

Technical descriptions provide a detailed description of the full range in structure and floristic composition of regional ecosystems (e.g. 9.10.3) and their component vegetation communities (e.g. 9.10.3a, 9.10.3b).

The descriptions are compiled using site survey data from the Queensland Herbarium's CORVEG database. Distribution maps, representative images (if available) and the pre-clearing and remnant area (hectares) of each vegetation community derived from the regional ecosystem mapping (spatial) data are included. The technical descriptions should be used in conjunction with the fields from the regional ecosystem description database (REDD) for a full description of the regional ecosystem. Quantitative site data from relatively undisturbed sites are extracted from CORVEG and summarized to provide information specific to each vegetation community.

Technical descriptions include the attributes: tree canopy height and cover and native plant species composition of the predominant layer, which are used to assess the remnant status of vegetation under the *Vegetation Management Act 1999*. However, as technical descriptions reflect the full range in structure and floristic composition across the climatic, natural disturbance and geographic range of the regional ecosystem, local reference sites should be used where possible (Neldner *et al.* 2012 section 3.3.1).

The technical descriptions are subject to review and are updated as additional data becomes available.

When conducting a BioCondition assessment, these technical descriptions should be used in conjunction with [BioCondition benchmarks](#) for the specific regional ecosystem, or component vegetation community.

Field definitions

Description	Description of the species, structural formation and habitat of the vegetation community (this is not the Regulation description)
Area of pre-clearing regional ecosystem	The area of the regional ecosystem vegetation community before clearing in hectares
Area of remnant RE and percentage remaining	The area of the remnant regional ecosystem vegetation community in hectares and as a percentage of pre-clearing extent
Species recorded	Total number; number of woody species; number in the ground layer (some species can be both woody and occur in the ground layer); average number of species per site (using only sites where a completed species list was recorded); standard deviation; number of sites used to calculate the average species number.
Basal area	Site average, range and standard deviation (m ² /hectare)
Structural Formation	Percentage of sites by structural formation. For example: Woodland: 39%; open-forest: 39%; open-woodland: 22%, 23 site(s)
Representative CORVEG sites	Site (id) numbers used in the description
For each stratum present: <ul style="list-style-type: none"> Emergent (E) Canopy (T1), Sub-canopy (T2) and Low tree layers (T3) Shrub (S1) and Sub-shrub layers (S2) Ground (G) 	<ul style="list-style-type: none"> <i>Height</i> - average canopy height in metres, range in metres and number of sites values are based on. <i>Cover</i> - Average percentage canopy cover of the layer, range and number of sites values are based on. <i>Average stem density</i> (stems per hectare), range and number of sites values are based on.
Dominant species (relative cover, frequency):	Relative cover (mean of cover of species / total cover of all species in that stratum for all values > zero) and frequency (percent of total sites) ordered by decreasing relative abundance. Up to five most dominant species with frequency > 20% listed for each stratum. For example: <i>Abutilon albescens</i> (78, 46%), means this species occurs in 46% of all sites and when it occurs comprises 78% of total cover (of the stratum)
Frequent species (cover, frequency):	Frequent species: Cover (mean of all values > zero) and frequency (percent of total sites) of all species occurring in more than 5% of sites ordered by decreasing frequency. For example: <i>Abutilon albescens</i> (10, 46%), means this species occurs in 46% of all sites and when it occurs has a mean cover of 10% Ground layer species are listed as either graminoid or forbs. Naturalised species have an asterisk (*) after the scientific name. <i>indet.</i> after listed name = indeterminate species or genus



QUEENSLAND GOVERNMENT

Department of Science, Information Technology, Innovation and the Arts

Conditions of use

Technical descriptions have been developed from information published by the State of Queensland (acting through the Department) and remain the property of the State of Queensland. Technical descriptions are not to be included on internet sites other than the Queensland Government website.

Users should reference information contained in the technical descriptions as: Addicott, E.P. and Newton, M. (ed.) (year*) Technical Descriptions of Regional Ecosystems of the Einasleigh Uplands, (month, year*) (Queensland Herbarium, Department of Science, Information Technology, Innovation and the Arts: Brisbane). * Date shown in footnote of individual descriptions.

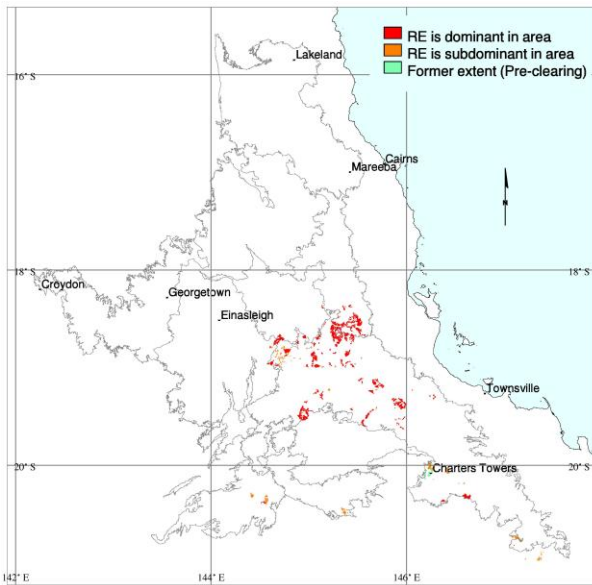
While every effort has been made to ensure the information presented is as reliable as possible, the State of Queensland accepts no liability and gives no assurance in respect of its accuracy and shall not be liable for any loss or damage arising from its use.

Technical descriptions are based on a combination of quantitative and qualitative information and should be used as a guide only. Technical descriptions are not to be used as a substitute for reference sites. Descriptions are subject to review and are updated as additional data becomes available.

For more information, contact:

Queensland Herbarium, Science Delivery
Brisbane Botanic Gardens, Mt Coot-tha
Mt Coot-tha Road
Toowong Qld 4066
Australia
Phone: (07) 3896 9326
Queensland.Herbarium@dsitia.qld.gov.au

Eucalyptus persistens woodland +/- E. crebra on pediments



I.D. Fox

Pre-clearing area (ha), remnant area (ha) and per cent remaining: 74,235 71,849 97%

Species recorded: Total: 94; woody: 18; ground: 77; Avg. spp./site: 29.7; std dev.: 15.8, 3 site(s)

Basal area: Avg./site: 16.2 m²/ha, range: 8.5 - 22 m²/ha, std. deviation: 6 m²/ha, 3 site(s)

Structural formation: Woodland: 50%; open-woodland: 25%; low open-woodland: 25%, 4 site(s)

Representative sites: 25589, 26042, 26196, 26785.

Stratum: T1

Height avg. = 11.8m, range 10-14m, 4 sites

Crown cover avg. = 16.0%, range 2.9-27.0%, 4 sites

Stem density/ha avg. = 213, range 100-320, 3 sites

Dominant species (relative cover, frequency): Eucalyptus persistens (97, 100%), Corymbia erythrophloia (5, 25%), Corymbia dallachiana (5, 25%)

Frequent species (cover, frequency): Eucalyptus persistens (15, 100%), Corymbia dallachiana (1, 25%), Corymbia erythrophloia (1, 25%), Eucalyptus crebra (25%)

Stratum: T2

Height avg. = 5.0m, 1 site

Crown cover avg. = 0.0%, 1 site

Dominant species (relative cover, frequency): Petalostigma pubescens (25, 25%), Grevillea striata (25, 25%), Atalaya hemiglauca (25, 25%), Acacia excelsa (25, 25%)

Frequent species (cover, frequency): Acacia excelsa (25%), Atalaya hemiglauca (25%), Grevillea striata (25%), Petalostigma pubescens (25%)

Dominant species: Relative cover (mean of cover of species / total cover of all species in that stratum for all values > zero) and frequency (percent of total sites) ordered by decreasing relative abundance. Up to five most dominant species with frequency > 20% listed for each stratum.

Frequent species: Cover (mean of all values > zero) and frequency (percent of total sites) of all species occurring in more than 5% of sites ordered by decreasing frequency. Ground layer species are listed as either graminoid or forb.

Naturalised species have an asterisk (*) after the name. indet. after listed name = indeterminate species or genus

Stratum: S1

Height avg. = 2.1m, range 1.5-3m, 4 sites

Crown cover avg. = 1.0%, range 0.0-1.6%, 4 sites

Stem density/ha avg. = 640, range 300-1260, 3 sites

Dominant species (relative cover, frequency): Eremophila mitchellii (54, 50%), Eucalyptus persistens (33, 75%), Carissa ovata (31, 50%), Erythroxylum australe (25, 50%), Petalostigma pubescens (13, 25%)

Frequent species (cover, frequency): Eucalyptus persistens (1, 75%), Maytenus cunninghamii (75%), Atalaya hemiglauca (50%), Carissa lanceolata (50%), Carissa ovata (5, 50%), Eremophila mitchellii (2, 50%), Erythroxylum australe (5, 50%), Acacia excelsa (25%), Capparis canescens (25%), Capparis indet. (25%), Eremophila debilis (25%), Grevillea striata (25%), Grewia retusifolia (25%), Petalostigma pubescens (25%), Wrightia saligna (25%)

Stratum: G

Height avg. = 0.5m, range 0.4-0.7m, 3 sites

PFC avg. = 41.7%, range 25-70%, 3 sites

Dominant species (relative cover, frequency): Bothriochloa decipiens (32, 25%), Heteropogon contortus (29, 75%), Leptochloa indet. (22, 25%), Chloris divaricata (22, 25%), Melinis repens (20, 25%)*

Frequent species (cover, frequency): GRAMINOIDS: Heteropogon contortus (18, 75%), Digitaria indet. (50%), Themeda triandra (3, 50%), Aristida calycina var. calycina (2, 25%), Aristida holathera var. holathera (25%), Aristida pruinosa (25%), Bothriochloa decipiens (10, 25%), Bothriochloa decipiens var. cloncurrrens (2, 25%), Chloris divaricata (7, 25%), Chrysopogon fallax (3, 25%), Cymbopogon bombycinus (25%), Cyperus gracilis (25%), Digitaria ammophila (25%), Digitaria brownii (25%), Eragrostiella indet. (5, 25%), Eragrostis leptostachya (25%), Eragrostis schultzei (2, 25%), Eragrostis spartanoides (25%), Eriochloa procera (25%), Fimbristylis depauperata (5, 25%), Fimbristylis indet. (25%), Leptochloa indet. (7, 25%), Melinis repens (5, 25%), Mnesithea rottboellioides (25%), Panicum decompositum (25%), Panicum effusum var. effusum (25%), Panicum indet. (6, 25%), Poaceae indet. (25%), Schizachyrium indet. (25%), Scleria indet. (25%), Sporobolus australasicus (5, 25%), Sporobolus indet. (25%), Urochloa holosericea subsp. holosericea (25%)*

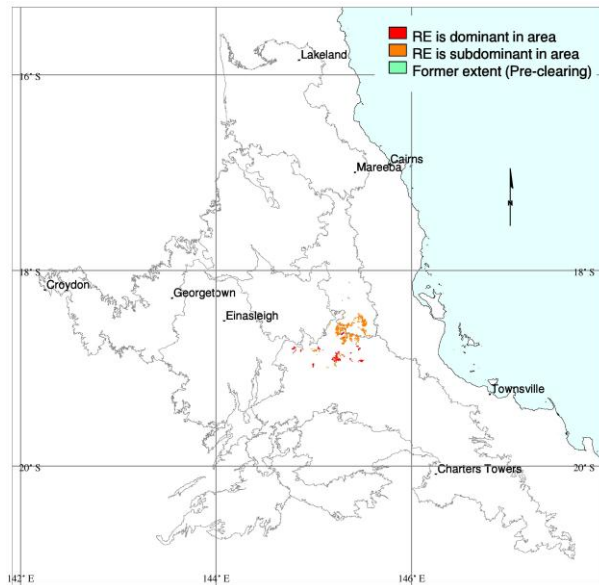
FORBS: Sida hackettiana (50%), Breyeria oblongifolia (25%), Camptacra barbata (25%), Chamaesyce mitchelliana var. mitchelliana (25%), Crotalaria medicaginea (25%), Cymbidium canaliculatum (25%), Emilia sonchifolia var. javanica (25%), Epaltes australis (25%), Eustrephus latifolius (25%), Evolvulus alsinoides (25%), Galactia tenuiflora forma sericea (25%), Glycine indet. (25%), Grewia retusifolia (25%), Hybanthus indet. (25%), Jacquemontia paniculata var. tomentosa (25%), Oldenlandia mitrasacmoides subsp. trachymenoides (25%), Peripleura bicolor (25%), Phyllanthus fuernrohrii (25%), Pterocaulon redolens (25%), Pterocaulon sphacelatum (25%), Rhynchosia minima (25%), Sida cordifolia* (25%), Sida spinosa* (25%), Spermacoe brachystema (25%), Stylidium eriorhizum (25%), Stylosanthes scabra* (25%), Tephrosia juncea (25%), Tephrosia leptoclada (25%), Urena lobata* (25%), Wahlenbergia gracilis (25%), Zornia muelleriana subsp. muelleriana (25%)*

Dominant species: Relative cover (mean of cover of species / total cover of all species in that stratum for all values > zero) and frequency (percent of total sites) ordered by decreasing relative abundance. Up to five most dominant species with frequency > 20% listed for each stratum.

Frequent species: Cover (mean of all values > zero) and frequency (percent of total sites) of all species occurring in more than 5% of sites ordered by decreasing frequency. Ground layer species are listed as either graminoid or forb.

Naturalised species have an asterisk (*) after the name. indet. after listed name = indeterminate species or genus

Melaleuca uncinata low open-forest +/- Eucalyptus persistens emergents with no mid layer and no ground layer



I.D. Fox

Pre-clearing area (ha), remnant area (ha) and per cent remaining: 12,982 12,904 99%

Species recorded: Total: 38; woody: 12; ground: 28; Avg. spp./site: 19.5; std dev.: 1.5, 2 site(s)

Basal area: Avg./site: 12.0 m²/ha, range: 11.0 - 13 m²/ha, std. deviation: 1 m²/ha, 2 site(s)

Structural formation: Low open-forest: 100%, 2 site(s)

Representative sites: 26043, 26076.

Stratum: E

Height avg. = 9.5m, range 8-11m, 2 sites

Crown cover avg. = 2.2%, range 0.0-4.4%, 2 sites

Stem density/ha avg. = 80, 1 site

Dominant species (relative cover, frequency): Eucalyptus moluccana (100, 50%), Eucalyptus persistens (64, 50%), Acacia shirleyi (36, 50%)

Frequent species (cover, frequency): Acacia shirleyi (1, 50%), Eucalyptus moluccana (50%), Eucalyptus persistens (2, 50%)

Stratum: T1

Height avg. = 5.5m, range 5-6m, 2 sites

Crown cover avg. = 69.1%, range 66.2-72.0%, 2 sites

Stem density/ha avg. = 3290, range 2100-4480, 2 sites

Dominant species (relative cover, frequency): Melaleuca uncinata (100, 100%)

Frequent species (cover, frequency): Melaleuca uncinata (69, 100%), Acacia shirleyi (50%), Alphitonia excelsa (50%), Lophostemon suaveolens (50%)

Dominant species: Relative cover (mean of cover of species / total cover of all species in that stratum for all values > zero) and frequency (percent of total sites) ordered by decreasing relative abundance. Up to five most dominant species with frequency > 20% listed for each stratum.

Frequent species: Cover (mean of all values > zero) and frequency (percent of total sites) of all species occurring in more than 5% of sites ordered by decreasing frequency. Ground layer species are listed as either graminoid or forb.

Naturalised species have an asterisk (*) after the name. indet. after listed name = indeterminate species or genus

Stratum: S1

Height avg. = 1.3m, range 1-1.5m, 2 sites

Crown cover avg. = 30.7%, range 0.0-61.4%, 2 sites

Stem density/ha avg. = 2480, range 360-4600, 2 sites

Dominant species (relative cover, frequency): *Acacia aulacocarpa* (100, 50%), *Melaleuca uncinata* (81, 50%), *Larsenaikia ochreata* (3, 50%), *Hovea lanceolata* (3, 50%), *Erythroxylum australe* (3, 50%)

Frequent species (cover, frequency): *Acacia aulacocarpa* (50%), *Acacia shirleyi* (50%), *Acacia simsii* (50%), *Alphitonia excelsa* (50%), *Beyeria viscosa* var. *obovata* (50%), *Erythroxylum australe* (50%), *Hovea lanceolata* (50%), *Larsenaikia ochreata* (50%), *Melaleuca uncinata* (1, 50%)

Stratum: G

Height avg. = 0.3m, range 0.2-0.3m, 2 sites

PFC avg. = 11.5%, range 2-21%, 2 sites

Dominant species (relative cover, frequency): *Entolasia stricta* (59, 50%), *Eragrostis indet.* (36, 50%), *Cyperus indet.* (20, 50%), *Melaleuca uncinata* (16, 50%), *Fimbristylis dichotoma* (8, 50%)

Frequent species (cover, frequency): **GRAMINOIDS:** *Aristida calycina* (50%), *Aristida indet.* (50%), *Cymbopogon indet.* (2, 50%), *Cyperus indet.* (5, 50%), *Digitaria parviflora* (50%), *Enteropogon unispiceus* (50%), *Entolasia stricta* (1, 50%), *Eragrostis indet.* (9, 50%), *Fimbristylis dichotoma* (2, 50%), *Heteropogon contortus* (50%), *Panicum effusum* (50%), *Panicum indet.* (50%), *Paspalidium gracile* (50%), *Schizachyrium indet.* (1, 50%)

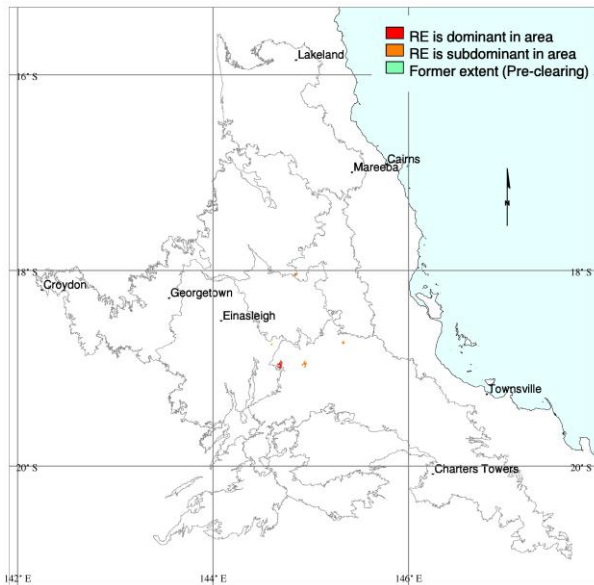
FORBS: *Asteraceae indet.* (50%), *Cheilanthes indet.* (50%), *Cyanthillium cinereum* (50%), *Dianella rara* (50%), *Everistia vacciniifolia* var. *nervosa* (50%), *Evolvulus alsinoides* (50%), *Fabaceae indet.* (50%), *Geitonoplesium indet.* (50%), *Lomandra indet.* (50%), *Melaleuca uncinata* (4, 50%), *Ruellia tuberosa** (1, 50%), *Seringia corollata* (50%), *Sida indet.* (50%), *Spermacoce indet.* (50%)

Dominant species: Relative cover (mean of cover of species / total cover of all species in that stratum for all values > zero) and frequency (percent of total sites) ordered by decreasing relative abundance. Up to five most dominant species with frequency > 20% listed for each stratum.

Frequent species: Cover (mean of all values > zero) and frequency (percent of total sites) of all species occurring in more than 5% of sites ordered by decreasing frequency. Ground layer species are listed as either graminoid or forb.

Naturalised species have an asterisk (*) after the name. indet. after listed name = indeterminate species or genus

Eucalyptus persists and/or E. exserta woodland +/- E. crebra +/- A. shirleyi on deeply weathered granite hills



M. Newton

Pre-clearing area (ha), remnant area (ha) and per cent remaining: 2,916 2,827 97%

Species recorded: Total: 35; woody: 12; ground: 24; Avg. spp./site: 20.5; std dev.: 4.5, 2 site(s)

Basal area: Avg./site: 5.5 m²/ha, range: 1.5 - 10 m²/ha, std. deviation: 4 m²/ha, 2 site(s)

Structural formation: Woodland: 50%; low open-woodland: 50%, 2 site(s)

Representative sites: 26510, 27032.

Stratum: T1

Height avg. = 12.0m, range 8-16m, 2 sites

Crown cover avg. = 13.2%, range 6.1-20.3%, 2 sites

Stem density/ha avg. = 180, range 160-200, 2 sites

Dominant species (relative cover, frequency): Eucalyptus persistens (79, 100%), Eucalyptus crebra (21, 100%)

Frequent species (cover, frequency): Corymbia erythrophloia (100%), Eucalyptus crebra (2, 100%), Eucalyptus persistens (7, 100%), Corymbia dallachiana (50%)

Stratum: T2

Height avg. = 7.0m, 1 site

Crown cover avg. = 1.6%, 1 site

Stem density/ha avg. = 380, 1 site

Dominant species (relative cover, frequency): Eucalyptus crebra (49, 50%), Callitris intratropica (49, 50%), Eucalyptus persistens (1, 50%), Corymbia erythrophloia (1, 50%), Acacia disparrima subsp. disparrima (1, 50%)

Frequent species (cover, frequency): Acacia disparrima subsp. disparrima (50%), Callitris intratropica (2, 50%), Corymbia erythrophloia (50%), Eucalyptus crebra (2, 50%), Eucalyptus persistens (50%)

Dominant species: Relative cover (mean of cover of species / total cover of all species in that stratum for all values > zero) and frequency (percent of total sites) ordered by decreasing relative abundance. Up to five most dominant species with frequency > 20% listed for each stratum.

Frequent species: Cover (mean of all values > zero) and frequency (percent of total sites) of all species occurring in more than 5% of sites ordered by decreasing frequency. Ground layer species are listed as either graminoid or forb.

Naturalised species have an asterisk (*) after the name. indet. after listed name = indeterminate species or genus

Stratum: S1

Height avg. = 1.5m, range 1.5-1.5m, 2 sites

Crown cover avg. = 0.0%, range 0.0-0.0%, 2 sites

Stem density/ha avg. = 200, range 180-220, 2 sites

Dominant species (relative cover, frequency): *Corymbia dallachiana* (72, 50%), *Pogonolobus reticulatus* (17, 50%), *Grevillea mimosoides* (17, 50%), *Corymbia erythrophloia* (17, 50%), *Callitris intratropica* (17, 50%)

Frequent species (cover, frequency): *Maytenus cunninghamii* (100%), *Acacia* *indet.* (50%), *Atalaya hemiglauca* (50%), *Callitris intratropica* (50%), *Carissa lanceolata* (50%), *Corymbia dallachiana* (50%), *Corymbia erythrophloia* (50%), *Eucalyptus crebra* (50%), *Grevillea mimosoides* (50%), *Pogonolobus reticulatus* (50%)

Stratum: G

Height avg. = 0.4m, range 0.3-0.5m, 2 sites

PFC avg. = 36.0%, range 30-42%, 2 sites

Dominant species (relative cover, frequency): *Bothriochloa decipiens* (71, 50%), *Themeda triandra* (34, 100%), *Arundinella* *indet.* (25, 50%), *Chrysopogon* *indet.* (14, 50%), *Aristida* *indet.* (6, 100%)

Frequent species (cover, frequency): **GRAMINOIDS:** *Aristida* *indet.* (2, 100%), *Themeda triandra* (12, 100%), *Arundinella* *indet.* (9, 50%), *Bothriochloa bladhii* *subsp. glabra** (50%), *Bothriochloa decipiens* (21, 50%), *Chrysopogon* *indet.* (4, 50%), *Eragrostis* *indet.* (1, 50%), *Fimbristylis* *indet.* (50%), *Heteropogon triticeus* (50%), *Scleria sphacelata* (50%), *Tripogon loliiformis* (50%)

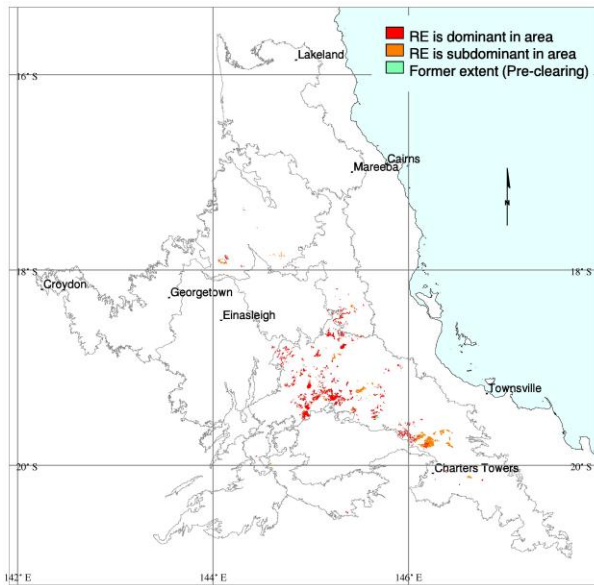
FORBS: *Angiosperm* *indet.* (50%), *Asteraceae* *indet.* (50%), *Brunoniella australis* (50%), *Dodonaea* *indet.* (50%), *Grewia retusifolia* (50%), *Hibiscus* *indet.* (50%), *Hovea* *indet.* (50%), *Larsenaikia ochreatea* (50%), *Lomandra* *indet.* (1, 50%), *Persoonia falcata* (50%), *Polycarphaea corymbosa* *var. corymbosa* (50%), *Polycarphaea spirostylis* (50%), *Stylosanthes scabra** (50%)

Dominant species: Relative cover (mean of cover of species / total cover of all species in that stratum for all values > zero) and frequency (percent of total sites) ordered by decreasing relative abundance. Up to five most dominant species with frequency > 20% listed for each stratum.

Frequent species: Cover (mean of all values > zero) and frequency (percent of total sites) of all species occurring in more than 5% of sites ordered by decreasing frequency. Ground layer species are listed as either graminoid or forb.

Naturalised species have an asterisk (*) after the name. *indet.* after listed name = indeterminate species or genus

Acacia shirleyi woodland on mesas



Pre-clearing area (ha), remnant area (ha) and per cent remaining: 70,214 68,906 98%

Species recorded: Total: 182; woody: 76; ground: 110; Avg. spp./site: 21.7; std dev.: 6.5, 13 site(s)

Basal area: Avg./site: 7.7 m²/ha, range: 3.5 - 12 m²/ha, std. deviation: 3 m²/ha, 10 site(s)

Structural formation: Woodland: 31%; low woodland: 31%; open-forest: 23%; low open-woodland: 15%, 13 site(s)

Representative sites: 25588, 25838, 25869, 26045, 26046, 26064, 26104, 26173, 26199, 26766, 26767, 26896, 37325.

Stratum: T1

Height avg. = 10.6m, range 7-16m, 13 sites

Crown cover avg. = 38.5%, range 7.9-73.3%, 13 sites

Stem density/ha avg. = 372, range 80-800, 10 sites

Dominant species (relative cover, frequency): *Acacia shirleyi* (60, 92%), *Corymbia lamprophylla* (28, 31%)

Frequent species (cover, frequency): *Acacia shirleyi* (22, 92%), *Corymbia lamprophylla* (8, 31%), *Acacia leptostachya* (15%), *Corymbia clarksoniana* (6, 15%), *Corymbia dallachiana* (3, 15%), *Corymbia serendipita* (15%), *Corymbia trachyphloia* (11, 15%), *Eucalyptus melanophloia* (2, 15%), *Eucalyptus persistens* (3, 15%), *Acacia burdekensis* (8%), *Acacia catenulata* (10, 8%), *Alstonia constricta* (8%), *Brachychiton australis* (8%), *Corymbia citriodora* (7, 8%), *Corymbia gilbertensis* (8%), *Corymbia setosa subsp. pedicellaris* (4, 8%), *Corymbia tessellaris* (8%), *Drypetes deplanchei* (8%), *Eucalyptus exserta* (8%), *Eucalyptus howittiana* (8%), *Flindersia collina* (8%), *Terminalia oblongata* (8%)

Stratum: T2

Height avg. = 4.7m, range 3-6m, 8 sites

Crown cover avg. = 8.1%, range 0.0-31.4%, 8 sites

Stem density/ha avg. = 123, range 20-240, 6 sites

Dominant species (relative cover, frequency): *Acacia shirleyi* (60, 54%)

Frequent species (cover, frequency): *Acacia shirleyi* (7, 54%), *Eucalyptus persistens* (15%), *Psydrax attenuata* (15%), *Acacia burdekensis* (8%), *Acacia leptostachya* (8%), *Corymbia clarksoniana* (8%), *Corymbia leichhardtii* (5, 8%), *Corymbia serendipita* (8%), *Corymbia setosa subsp. pedicellaris* (8%), *Diospyros humilis* (8%), *Eucalyptus exserta* (8%), *Eucalyptus shirleyi* (8%), *Everistia vacciniifolia* (8%), *Grevillea glauca* (8%), *Melaleuca nervosa* (8%), *Persoonia falcata* (3, 8%), *Psydrax saligna* (8%)

Dominant species: Relative cover (mean of cover of species / total cover of all species in that stratum for all values > zero) and frequency (percent of total sites) ordered by decreasing relative abundance. Up to five most dominant species with frequency > 20% listed for each stratum.

Frequent species: Cover (mean of all values > zero) and frequency (percent of total sites) of all species occurring in more than 5% of sites ordered by decreasing frequency. Ground layer species are listed as either graminoid or forb.

Naturalised species have an asterisk (*) after the name. indet. after listed name = indeterminate species or genus

Stratum: S1

Height avg. = 2.6m, range 1-6m, 13 sites

Crown cover avg. = 8.1%, range 0.0-58.0%, 13 sites

Stem density/ha avg. = 978, range 140-4040, 8 sites

Dominant species (relative cover, frequency): *Petalostigma banksii* (47, 31%), *Acacia shirleyi* (31, 54%), *Psyrax attenuata* (19, 31%), *Erythroxylum australe* (16, 31%), *Corymbia lamprophylla* (8, 23%)

Frequent species (cover, frequency): *Acacia shirleyi* (5, 54%), *Erythroxylum australe* (31%), *Petalostigma banksii* (2, 31%), *Psyrax attenuata* (31%), *Corymbia lamprophylla* (23%), *Maytenus cunninghamii* (23%), *Acacia burdekensis* (15%), *Corymbia trachyphloia* (15%), *Distichostemon dodecandrus* (15%), *Eucalyptus melanophloia* (15%), *Lamprolobium fruticosum* (15%), *Persoonia falcata* (15%), *Acacia dictyophleba* (8%), *Acacia holosericea* (8%), *Alphitonia pomaderroides* (8%), *Alstonia constricta* (8%), *Austromyrtus indet.* (8%), *Canthium indet.* (8%), *Capparis canescens* (8%), *Carissa ovata* (8%), *Cochlospermum indet.* (8%), *Corymbia indet.* (8%), *Corymbia leichhardtii* (8%), *Corymbia setosa subsp. pedicellaris* (8%), *Croton phebalioides* (8%), *Denhamia oleaster* (8%), *Diospyros humilis* (8%), *Dodonaea boroniifolia* (8%), *Dodonaea indet.* (58, 8%), *Ehretia membranifolia* (8%), *Erythroxylum ellipticum* (8%), *Eucalyptus cullenii* (8%), *Eucalyptus exserta* (8%), *Eucalyptus persistens* (8%), *Eucalyptus shirleyi* (8%), *Geijera salicifolia* (8%), *Grevillea glauca* (8%), *Grevillea parallela* (8%), *Grevillea pteridifolia* (8%), *Hovea lanceolata* (1, 8%), *Lithomyrtus microphylla* (8%), *Lysiphyllum hookeri* (8%), *Melaleuca citrolens* (6, 8%), *Melaleuca nervosa* (8%), *Melodorum leichhardtii* (8%), *Olearia subspicata* (8%), *Parsonsia eucalyptophylla* (8%), *Petalostigma pubescens* (8%), *Planchonia careya* (8%), *Pleiogynium timorense* (8%), *Psyrax odorata* (8%), *Psyrax saligna* (8%), *Pterocaulon sphacelatum* (8%), *Santalum lanceolatum* (8%)

Stratum: S2

Height avg. = 1.0m, range 1-1m, 3 sites

Crown cover avg. = 0.0%, range 0.0-0.0%, 3 sites

Stem density/ha avg. = 1027, range 60-1840, 3 sites

Frequent species (cover, frequency): *Acacia shirleyi* (15%), *Acacia galioides* (8%), *Alphitonia excelsa* (8%), *Alphitonia pomaderroides* (8%), *Bossiaea armitii* (8%), *Calytrix leptophylla* (3, 8%), *Capparis indet.* (8%), *Dodonaea indet.* (8%), *Eucalyptus persistens* (8%), *Eucalyptus shirleyi* (8%), *Grevillea parallela* (8%), *Grevillea pteridifolia* (8%), *Heliotropium cunninghamii* (8%), *Lamprolobium fruticosum* (8%), *Lithomyrtus obtusa* (8%), *Maytenus cunninghamii* (8%), *Persoonia falcata* (8%), *Petalostigma banksii* (8%), *Planchonia careya* (8%), *Psyrax attenuata* (8%), *Psyrax forsteri* (8%)

Dominant species: Relative cover (mean of cover of species / total cover of all species in that stratum for all values > zero) and frequency (percent of total sites) ordered by decreasing relative abundance. Up to five most dominant species with frequency > 20% listed for each stratum.

Frequent species: Cover (mean of all values > zero) and frequency (percent of total sites) of all species occurring in more than 5% of sites ordered by decreasing frequency. Ground layer species are listed as either graminoid or forb.

Naturalised species have an asterisk (*) after the name. indet. after listed name = indeterminate species or genus

Stratum: G

Height avg. = 0.5m, range 0.3-0.8m, 13 sites

PFC avg. = 39.8%, range 9-74%, 13 sites

Dominant species (relative cover, frequency): *Cleistochloa subjuncea* (37, 62%), *Aristida queenslandica* var. *queenslandica* (15, 31%), *Aristida* *indet.* (11, 46%), *Scleria sphacelata* (10, 38%), *Digitaria* *indet.* (9, 31%)

Frequent species (cover, frequency): **GRAMINOIDS:** *Cleistochloa subjuncea* (22, 62%), *Aristida* *indet.* (3, 46%), *Scleria sphacelata* (4, 38%), *Aristida queenslandica* var. *queenslandica* (8, 31%), *Digitaria* *indet.* (3, 31%), *Themeda triandra* (31%), *Eragrostis* *indet.* (1, 23%), *Eriachne* *indet.* (1, 23%), *Setaria surgens* (23%), *Digitaria parviflora* (15%), *Eragrostis lacunaria* (15%), *Eragrostis sororia* (15%), *Eriachne mucronata* (4, 15%), *Fimbristylis dichotoma* (1, 15%), *Heteropogon contortus* (15%), *Panicum* *indet.* (5, 15%), *Paspalidium gracile* (5, 15%), *Poaceae* *indet.* (6, 15%), *Schizachyrium fragile* (11, 15%), *Scleria brownii* (15%), *Alloteropsis cimicina* (8%), *Alloteropsis semialata* (8%), *Ancistrachne uncinulata* (8%), *Aristida calycina* (8%), *Aristida holathera* (4, 8%), *Aristida queenslandica* var. *dissimilis* (8%), *Chloris pectinata* (8%), *Chrysopogon fallax* (8%), *Cymbopogon ambiguus* (7, 8%), *Cymbopogon bombycinus* (8%), *Cymbopogon obtectus* (8%), *Cymbopogon refractus* (8%), *Cyperus fulvus* (8%), *Cyperus* *indet.* (8%), *Cyperus pulchellus* (8%), *Digitaria breviglumis* (5, 8%), *Digitaria ramularis* (8%), *Ectrosia* *indet.* (8%), *Entolasia stricta* (8%), *Eragrostis schultzei* (8%), *Eriachne ciliata* (6, 8%), *Fimbristylis recta* (8%), *Fimbristylis squarrosa* (8%), *Gahnia aspera* (8%), *Panicum effusum* (8%), *Panicum effusum* var. *effusum* (15, 8%), *Panicum seminudum* var. *cairnsonianum* (1, 8%), *Paspalidium distans* (2, 8%), *Paspalidium* *indet.* (8%), *Pennisetum ciliare** (2, 8%), *Rhynchospora heterochaeta* (8%), *Rhynchospora pterochaeta* (1, 8%), *Schizachyrium* *indet.* (3, 8%), *Schizachyrium pachyarthron* (13, 8%), *Scleria* *indet.* (8%), *Scleria rugosa* (8%), *Sporobolus australasicus* (8%), *Triodia longiceps* (5, 8%), *Triodia pungens* (8%), *Tripogon loliiformis* (1, 8%), *Urochloa holosericea* (8%)

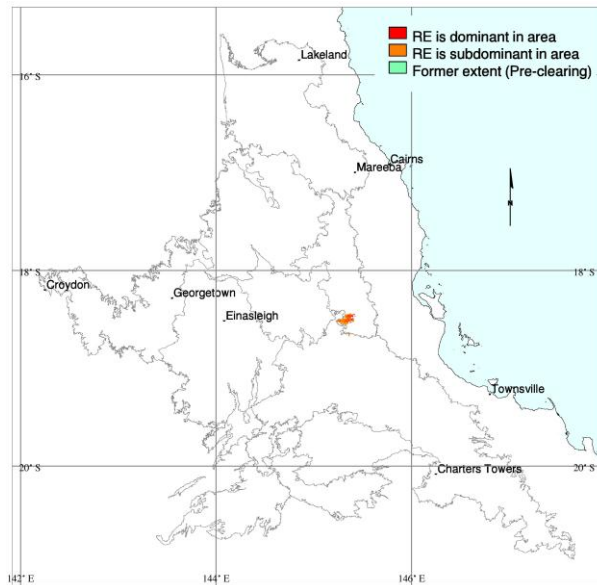
FORBS: *Cheilanthes* *indet.* (23%), *Evolvulus alsinoides* (23%), *Sida* *indet.* (23%), *Calotis dentex* (15%), *Lomandra multiflora* (15%), *Lomandra multiflora* subsp. *multiflora* (15%), *Phyllanthus fuernrohrii* (15%), *Phyllanthus virgatus* (15%), *Stylosanthes* *indet.* (15%), *Asteraceae* *indet.* (8%), *Bidens pilosa** (8%), *Bossiaea armitii* (8%), *Brunoniella acaulis* (8%), *Brunoniella* *indet.* (8%), *Calotis* *indet.* (4, 8%), *Canavalia papuana* (8%), *Chamaecrista absus* var. *absus* (8%), *Chamaecrista mimosoides* (8%), *Cheilanthes sieberi* (5, 8%), *Cheilanthes tenuifolia* (8%), *Cyanthillium cinereum* (8%), *Desmodium brownii* (8%), *Dianella longifolia* (8%), *Drosera indica* (8%), *Euphorbia* *indet.* (1, 8%), *Galactia tenuiflora* (8%), *Goodenia janamba* (1, 8%), *Helichrysum newcastlianum* (8%), *Hibiscus* *indet.* (8%), *Hibiscus krichauffianus* (8%), *Hibiscus meraukensis* (8%), *Hovea longipes* (8%), *Hypoestes floribunda* (8%), *Lichen* *indet.* (5, 8%), *Lomandra longifolia* (8%), *Malvastrum americanum* var. *americanum** (8%), *Murdannia* *indet.* (8%), *Olearia xerophila* (8%), *Parsonsia eucalyptophylla* (8%), *Parsonsia lanceolata* (8%), *Polycarpaea corymbosa* (8%), *Pterocaulon sphacelatum* (8%), *Sedopsis* *sp.* (*Bulimba Station P.I.Forster+ PIF14742*) (8%), *Sida filiformis* (8%), *Solanum dianthophorum* (8%), *Spermacoce brachystema* (8%), *Tephrosia* *indet.* (8%), *Tephrosia juncea* (8%), *Zornia muriculata* (8%)

Dominant species: Relative cover (mean of cover of species / total cover of all species in that stratum for all values > zero) and frequency (percent of total sites) ordered by decreasing relative abundance. Up to five most dominant species with frequency > 20% listed for each stratum.

Frequent species: Cover (mean of all values > zero) and frequency (percent of total sites) of all species occurring in more than 5% of sites ordered by decreasing frequency. Ground layer species are listed as either graminoid or forb.

Naturalised species have an asterisk (*) after the name. *indet.* after listed name = indeterminate species or genus

Allocasuarina inophloia +/- Eucalyptus exserta low open-woodland on exposed lateritic surfaces on Tertiary plateaus



M. Newton

Pre-clearing area (ha), remnant area (ha) and per cent remaining: 6,730 6,691 99%

Species recorded: Total: 52; woody: 16; ground: 37; Avg. spp./site: 24.7; std dev.: 1.2, 3 site(s)

Basal area: Avg./site: 11.7 m²/ha, range: 9.5 - 14 m²/ha, std. deviation: 2 m²/ha, 3 site(s)

Structural formation: Low woodland: 67%; low open-woodland: 33%, 3 site(s)

Representative sites: 26187, 26275, 27029.

Stratum: E

Height avg. = 14.3m, range 11-18m, 3 sites

Crown cover avg. = 0.0%, range 0.0-0.0%, 3 sites

Stem density/ha avg. = 20, 1 site

Dominant species (relative cover, frequency): Eucalyptus exserta (83, 100%), Eucalyptus crebra (50, 33%)

Frequent species (cover, frequency): Eucalyptus exserta (100%), Eucalyptus crebra (33%)

Stratum: T1

Height avg. = 8.3m, range 7-10m, 3 sites

Crown cover avg. = 23.9%, range 4.4-35.9%, 3 sites

Stem density/ha avg. = 447, range 380-520, 3 sites

Dominant species (relative cover, frequency): Melaleuca nervosa (41, 67%), Eucalyptus exserta (36, 100%), Allocasuarina inophloia (24, 100%), Lophostemon suaveolens (18, 33%), Melaleuca stenostachya (17, 33%)

Frequent species (cover, frequency): Allocasuarina inophloia (5, 100%), Eucalyptus exserta (10, 100%), Melaleuca nervosa (1, 67%), Petalostigma pubescens (67%), Corymbia clarksoniana (33%), Lophostemon grandiflorus (33%), Lophostemon suaveolens (4, 33%), Melaleuca stenostachya (3, 33%), Melaleuca viridiflora (33%), Persoonia falcata (33%), Petalostigma banksii (33%)

Dominant species: Relative cover (mean of cover of species / total cover of all species in that stratum for all values > zero) and frequency (percent of total sites) ordered by decreasing relative abundance. Up to five most dominant species with frequency > 20% listed for each stratum.

Frequent species: Cover (mean of all values > zero) and frequency (percent of total sites) of all species occurring in more than 5% of sites ordered by decreasing frequency. Ground layer species are listed as either graminoid or forb.

Naturalised species have an asterisk (*) after the name. indet. after listed name = indeterminate species or genus

Stratum: T2

Height avg. = 7.0m, 1 site

Crown cover avg. = 31.4%, 1 site

Dominant species (relative cover, frequency): Grevillea pteridifolia (100, 33%)

Frequent species (cover, frequency): Grevillea pteridifolia (33%)

Stratum: S1

Height avg. = 3.3m, range 2-4m, 3 sites

Crown cover avg. = 0.0%, range 0.0-0.0%, 3 sites

Stem density/ha avg. = 427, range 260-580, 3 sites

Dominant species (relative cover, frequency): Melaleuca viridiflora (17, 33%), Melaleuca stenostachya (17, 33%), Leptosema oxylobioides (17, 33%), Grevillea pteridifolia (17, 33%), Allocasuarina inophloia (17, 67%)

Frequent species (cover, frequency): Acacia holosericea (100%), Petalostigma pubescens (100%), Allocasuarina inophloia (67%), Eucalyptus exserta (67%), Melaleuca nervosa (67%), Bursaria incana (33%), Grevillea pteridifolia (33%), Leptosema oxylobioides (33%), Lophostemon grandiflorus (33%), Melaleuca stenostachya (33%), Melaleuca viridiflora (33%), Persoonia falcata (33%)

Stratum: G

Height avg. = 0.6m, range 0.3-1m, 3 sites

PFC avg. = 52.3%, range 42-58%, 3 sites

Dominant species (relative cover, frequency): Aristida indet. (46, 67%), Poaceae indet. (37, 33%), Heteropogon contortus (29, 67%), Sorghum indet. (28, 33%), Themeda triandra (12, 100%)

Frequent species (cover, frequency): GRAMINOIDS: Heteropogon triticeus (1, 100%), Themeda triandra (7, 100%), Aristida indet. (27, 67%), Heteropogon contortus (17, 67%), Panicum indet. (67%), Schizachyrium indet. (1, 67%), Cyperaceae indet. (2, 33%), Eragrostiella indet. (33%), Melinis repens (33%), Poaceae indet. (16, 33%), Setaria surgens (33%), Sorghum indet. (12, 33%)*

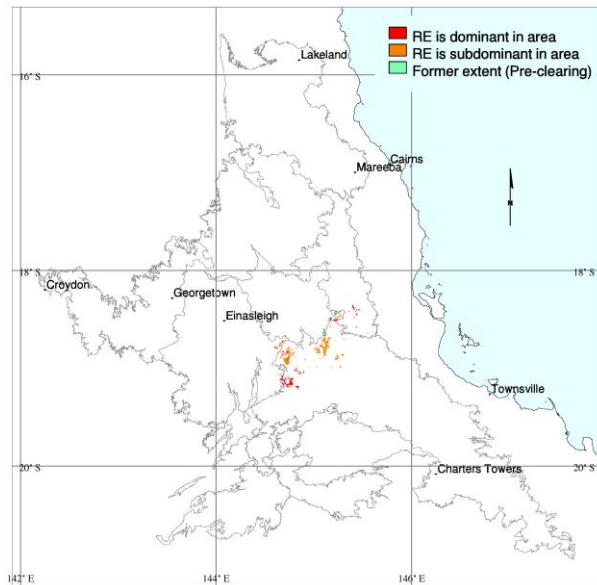
FORBS: Desmodium indet. (67%), Spermaceae indet. (67%), Wahlenbergia indet. (67%), Brunoniella australis (33%), Cassytha filiformis (33%), Chamaecrista longipes (1, 33%), Chrysocephalum apiculatum (1, 33%), Convolvulaceae indet. (33%), Dianella indet. (33%), Drosera indet. (33%), Goodenia indet. (1, 33%), Goodeniaceae indet. (33%), Hypericum gramineum (33%), Indigofera indet. (33%), Melaleuca stenostachya (2, 33%), Pandorea pandorana (33%), Phyllanthus indet. (33%), Poranthera microphylla (33%), Rostellularia adscendens (33%), Senna artemisioides (33%), Stylosanthes scabra (33%), Tephrosia indet. (33%), Tephrosia sp. (Magazine Hill P.Jones 365) (33%), Xyris complanata (5, 33%), Zornia indet. (1, 33%)*

Dominant species: Relative cover (mean of cover of species / total cover of all species in that stratum for all values > zero) and frequency (percent of total sites) ordered by decreasing relative abundance. Up to five most dominant species with frequency > 20% listed for each stratum.

Frequent species: Cover (mean of all values > zero) and frequency (percent of total sites) of all species occurring in more than 5% of sites ordered by decreasing frequency. Ground layer species are listed as either graminoid or forb.

Naturalised species have an asterisk (*) after the name. indet. after listed name = indeterminate species or genus

Corymbia setosa and/or C. peltata low open-woodland on lateritised and deeply weathered surfaces



C. Kahler

Pre-clearing area (ha), remnant area (ha) and per cent remaining: 12,989 12,748 98%

Species recorded: Total: 107; woody: 35; ground: 72; Avg. spp./site: 29.4; std dev.: 6.8, 5 site(s)

Basal area: Avg./site: 4.1 m²/ha, range: 3.0 - 6 m²/ha, std. deviation: 1 m²/ha, 5 site(s)

Structural formation: Woodland: 40%; low woodland: 20%; low open-woodland: 20%; low open-forest: 20%, 5 site(s)

Representative sites: 26674, 26683, 26914, 26987, 27031.

Stratum: E

Height avg. = 16.0m, 1 site
 Crown cover avg. = 0.0%, 1 site
 Stem density/ha avg. = 40, 1 site

Frequent species (cover, frequency): Eucalyptus exilipes (20%)

Stratum: T1

Height avg. = 10.0m, range 9-12m, 5 sites
 Crown cover avg. = 38.0%, range 18.1-69.2%, 5 sites
 Stem density/ha avg. = 288, range 120-420, 5 sites

Dominant species (relative cover, frequency): Corymbia peltata (48, 60%), Corymbia setosa (38, 60%)

Frequent species (cover, frequency): Corymbia peltata (13, 60%), Corymbia setosa (13, 60%), Acacia burdekenensis (44, 20%), Acacia julifera (12, 20%), Alphitonia excelsa (20%), Corymbia clarksoniana (20%), Corymbia lamprophylla (20, 20%), Erythrophleum chlorostachys (20%), Eucalyptus melanophloia (4, 20%), Eucalyptus shirleyi (18, 20%), Grevillea glauca (20%)

Dominant species: Relative cover (mean of cover of species / total cover of all species in that stratum for all values > zero) and frequency (percent of total sites) ordered by decreasing relative abundance. Up to five most dominant species with frequency > 20% listed for each stratum.

Frequent species: Cover (mean of all values > zero) and frequency (percent of total sites) of all species occurring in more than 5% of sites ordered by decreasing frequency. Ground layer species are listed as either graminoid or forb.

Naturalised species have an asterisk (*) after the name. indet. after listed name = indeterminate species or genus

Stratum: T2

Height avg. = 5.0m, 1 site

Crown cover avg. = 6.1%, 1 site

Stem density/ha avg. = 180, 1 site

Frequent species (cover, frequency): *Acacia leptostachya* (20%), *Corymbia peltata* (2, 20%), *Corymbia setosa* (3, 20%), *Grevillea glauca* (20%)

Stratum: S1

Height avg. = 2.6m, range 1.5-4m, 5 sites

Crown cover avg. = 11.6%, range 2.9-35.9%, 5 sites

Stem density/ha avg. = 692, range 280-1620, 5 sites

Dominant species (relative cover, frequency): *Petalostigma banksii* (67, 80%), *Acacia julifera* subsp. *gilbertensis* (26, 40%), *Persoonia falcata* (9, 40%), *Erythroxylum ellipticum* (1, 40%), *Acacia lazaridis* (1, 40%)

Frequent species (cover, frequency): *Petalostigma banksii* (4, 80%), *Alphitonia excelsa* (60%), *Acacia julifera* subsp. *gilbertensis* (1, 40%), *Acacia lazaridis* (40%), *Corymbia setosa* (40%), *Erythroxylum ellipticum* (40%), *Persoonia falcata* (1, 40%), *Acacia hammondii* (20%), *Acacia indet.* (20%), *Acacia julifera* (20%), *Acacia multisiliqua* (3, 20%), *Breynia oblongifolia* (20%), *Corymbia clarksoniana* (20%), *Corymbia peltata* (20%), *Dodonaea lanceolata* (20%), *Erythrophleum chlorostachys* (20%), *Eucalyptus exilipes* (20%), *Eucalyptus melanophloia* (20%), *Flueggea virosa* subsp. *melanthesoides* (20%), *Gastrolobium grandiflorum* (20%), *Grevillea glauca* (20%), *Grevillea parallela* (20%), *Jacksonia thesioides* (6, 20%), *Lamprolobium fruticosum* (18, 20%), *Larsenaikia ochreatea* (1, 20%), *Maytenus cunninghamii* (20%), *Melaleuca stenostachya* (20%), *Psydrax attenuata* (20%), *Rubiaceae indet.* (20%), *Solanum indet.* (20%), *Terminalia aridicola* subsp. *aridicola* (20%)

Stratum: G

Height avg. = 0.6m, range 0.1-0.8m, 5 sites

PFC avg. = 47.6%, range 5-72%, 5 sites

Dominant species (relative cover, frequency): *Setaria indet.* (34, 40%), *Aristida indet.* (25, 40%), *Triodia indet.* (16, 60%), *Themeda triandra* (13, 100%), *Schizachyrium fragile* (8, 40%)

Frequent species (cover, frequency): **GRAMINOIDS:** *Themeda triandra* (7, 100%), *Triodia indet.* (10, 60%), *Aristida indet.* (2, 40%), *Chrysopogon fallax* (3, 40%), *Chrysopogon indet.* (40%), *Eragrostis interrupta* (40%), *Eriachne mucronata* (40%), *Melinis repens** (2, 40%), *Schizachyrium fragile* (4, 40%), *Setaria indet.* (22, 40%), *Aristida burraensis* (3, 20%), *Aristida calycina* (2, 20%), *Aristida queenslandica* (20, 20%), *Aristida queenslandica* var. *queenslandica* (6, 20%), *Bothriochloa bladhii* (20%), *Bothriochloa decipiens* (20%), *Bothriochloa ewartiana* (1, 20%), *Cleistochloa subjuncea* (18, 20%), *Cymbopogon bombicinus* (20%), *Cymbopogon indet.* (20%), *Cymbopogon refractus* (8, 20%), *Digitaria ammophila* (20%), *Digitaria breviglumis* (15, 20%), *Eragrostis brownii* (1, 20%), *Eragrostis indet.* (20%), *Eriachne obtusa* (20%), *Heteropogon contortus* (1, 20%), *Mnesithea formosa* (3, 20%), *Panicum effusum* (20%), *Panicum effusum* var. *effusum* (2, 20%), *Panicum indet.* (1, 20%), *Paspalidium gracile* (6, 20%), *Scleria brownii* (20%), *Scleria indet.* (1, 20%), *Scleria sphacelata* (10, 20%)

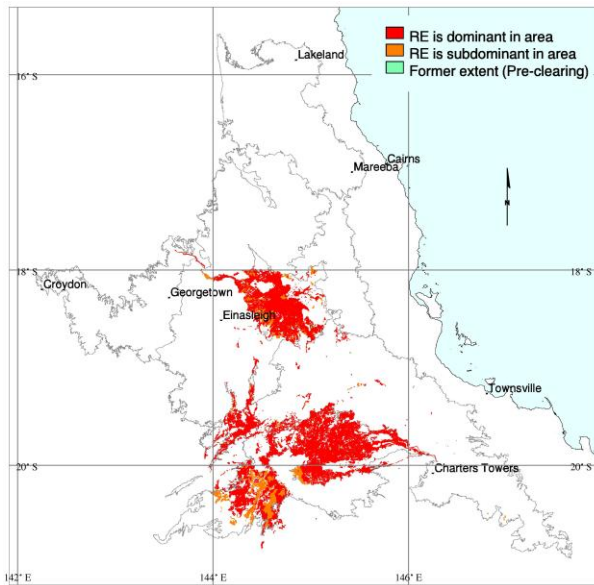
FORBS: *Brunoniella australis* (1, 40%), *Cyanthillium cinereum* (40%), *Distichostemon hispidulus* (40%), *Grewia retusifolia* (40%), *Hibiscus meraukensis* (40%), *Lomandra indet.* (40%), *Lomandra multiflora* (40%), *Spermacoce indet.* (40%), *Tephrosia filipes* (1, 40%), *Acacia galioides* (20%), *Angiosperm indet.* (20%), *Bossiaea armitii* (20%), *Cartonema indet.* (2, 20%), *Cayratia trifolia* (20%), *Chamaecrista absus* var. *absus* (20%), *Crotalaria medicaginea* (20%), *Desmodium rhytidophyllum* (20%), *Dianella indet.* (20%), *Distichostemon dodecandrus* (20%), *Fabaceae indet.* (9, 20%), *Flemingia indet.* (20%), *Galactia tenuiflora* var. *lucida* (20%), *Gen.(Aq247974) sp. (Belyando River V.J.Neldner+ 3459)* (20%), *Lomandra multiflora* subsp. *multiflora* (20%), *Margaritaria dubium-traceyi* (20%), *Marsdenia microlepis* (20%), *Parsonsia lanceolata* (20%), *Peripleura diffusa* (20%), *Phyllanthus virgatus* (20%), *Polycarpaea corymbosa* (20%), *Rostellularia adscendens* (20%), *Stylosanthes scabra** (20%), *Tephrosia dietrichiae* (20%), *Trianthema triquetra* (20%), *Trichodesma zeylanicum* (20%), *Waltheria indica* (20%), *Wedelia spilantheidoides* (20%)

Dominant species: Relative cover (mean of cover of species / total cover of all species in that stratum for all values > zero) and frequency (percent of total sites) ordered by decreasing relative abundance. Up to five most dominant species with frequency > 20% listed for each stratum.

Frequent species: Cover (mean of all values > zero) and frequency (percent of total sites) of all species occurring in more than 5% of sites ordered by decreasing frequency. Ground layer species are listed as either graminoid or forb.

Naturalised species have an asterisk (*) after the name. indet. after listed name = indeterminate species or genus

Eucalyptus crebra and Corymbia erythrophloia +/- C. dallachiana open-woodland on basalt plains



Pre-clearing area (ha), remnant area (ha) and per cent remaining: 984,393 975,724 99%

Species recorded: Total: 258; woody: 45; ground: 222; Avg. spp./site: 30.0; std dev.: 12.0, 17 site(s)

Basal area: Avg./site: 4.2 m²/ha, range: 1.0 - 8 m²/ha, std. deviation: 2 m²/ha, 20 site(s)

Structural formation: Open-woodland: 63%; woodland: 38%, 24 site(s)

Representative sites: 25967, 25970, 25973, 26003, 26009, 26016, 26025, 26026, 26035, 26184, 26186, 26246, 26251, 26267, 26534, 26542, 26794, 26865, 26871, 26872, 26927, 26929, 26930, 37330.

Stratum: T1

Height avg. = 13.4m, range 9-18m, 24 sites

Crown cover avg. = 14.0%, range 0.6-29.2%, 24 sites

Stem density/ha avg. = 68, range 20-200, 13 sites

Dominant species (relative cover, frequency): Eucalyptus crebra (69, 92%), Corymbia dallachiana (34, 46%), Corymbia erythrophloia (11, 50%)

Frequent species (cover, frequency): Eucalyptus crebra (9, 92%), Corymbia erythrophloia (2, 50%), Corymbia dallachiana (2, 46%), Corymbia confertiflora (10, 8%), Eucalyptus leptophleba (1, 8%), Amyema bifurcata (4%), Brachychiton populneus (4, 4%), Corymbia clarksoniana (4%), Corymbia terminalis (4%), Cymbidium canaliculatum (4%), Cymbidium indet. (4%), Erythrina vespertilio (4%), Eucalyptus exilipes (25, 4%), Eucalyptus granitica (2, 4%)

Stratum: T2

Height avg. = 6.5m, range 3-14m, 16 sites

Crown cover avg. = 3.0%, range 0.0-18.1%, 16 sites

Stem density/ha avg. = 111, range 20-280, 9 sites

Dominant species (relative cover, frequency): Eucalyptus crebra (43, 33%), Corymbia erythrophloia (35, 29%)

Frequent species (cover, frequency): Eucalyptus crebra (33%), Corymbia erythrophloia (29%), Erythrina vespertilio (13%), Atalaya hemiglauca (8%), Corymbia confertiflora (8%), Corymbia dallachiana (1, 8%), Dolichandrone heterophylla (8%), Maytenus cunninghamii (8%), Acacia bidwillii (2, 4%), Acacia indet. (1, 4%), Alphitonia excelsa (1, 4%), Atalaya indet. (20, 4%), Bursaria incana (4%), Erythroxyllum australe (1, 4%), Erythroxyllum ellipticum (3, 4%), Grevillea parallela (4%), Grevillea striata (4, 4%), Larsenaikia ochreatea (16, 4%), Terminalia aridicola (4%)

Dominant species: Relative cover (mean of cover of species / total cover of all species in that stratum for all values > zero) and frequency (percent of total sites) ordered by decreasing relative abundance. Up to five most dominant species with frequency > 20% listed for each stratum.

Frequent species: Cover (mean of all values > zero) and frequency (percent of total sites) of all species occurring in more than 5% of sites ordered by decreasing frequency. Ground layer species are listed as either graminoid or forb.

Naturalised species have an asterisk (*) after the name. indet. after listed name = indeterminate species or genus

Stratum: S1

Height avg. = 1.7m, range 0.8-3m, 18 sites

Crown cover avg. = 1.0%, range 0.0-6.1%, 18 sites

Stem density/ha avg. = 353, range 40-960, 8 sites

Dominant species (relative cover, frequency): *Bursaria incana* (46, 29%), *Acacia bidwillii* (9, 21%), *Maytenus cunninghamii* (9, 21%)

Frequent species (cover, frequency): *Bursaria incana* (29%), *Acacia bidwillii* (21%), *Maytenus cunninghamii* (21%), *Carissa lanceolata* (2, 17%), *Eucalyptus crebra* (17%), *Grevillea mimosoides* (17%), *Corymbia erythrophloia* (13%), *Grevillea parallela* (13%), *Planchonia careya* (13%), *Cayratia trifolia* (1, 8%), *Corymbia dallachiana* (8%), *Erythrina vespertilio* (8%), *Erythroxylum australe* (1, 8%), *Hakea lorea subsp. lorea* (8%), *Acacia farnesiana** (4%), *Amyema bifurcata* (4%), *Atalaya indet.* (4%), *Brachychiton albidus* (4%), *Camptacra barbata* (4%), *Capparis indet.* (4%), *Cassia indet.* (4%), *Corymbia confertiflora* (4%), *Cryptostegia grandiflora** (1, 4%), *Dolichandrone heterophylla* (4%), *Eucalyptus granitica* (1, 4%), *Flueggea leucopyrus* (4%), *Grewia retusifolia* (4%), *Hakea arborescens* (4%), *Petalostigma pubescens* (2, 4%), *Santalum lanceolatum* (1, 4%), *Terminalia aridicola* (4%), *Terminalia indet.* (4%)

Stratum: G

Height avg. = 0.5m, range 0.1-0.8m, 17 sites

PFC avg. = 58.4%, range 18-90%, 17 sites

Dominant species (relative cover, frequency): *Heteropogon contortus* (45, 67%), *Themeda triandra* (17, 42%), *Heteropogon triticeus* (7, 38%), *Melinis repens** (7, 38%), *Aristida indet.* (3, 21%)

Frequent species (cover, frequency): **GRAMINOIDS:** *Heteropogon contortus* (26, 67%), *Themeda triandra* (13, 42%), *Heteropogon triticeus* (3, 38%), *Melinis repens** (3, 38%), *Aristida indet.* (1, 21%), *Bothriochloa ewartiana* (5, 17%), *Dichanthium indet.* (9, 17%), *Enneapogon indet.* (17%), *Aristida latifolia* (13%), *Aristida leptopoda* (13%), *Cyperus fulvus* (13%), *Enneapogon lindleyanus* (13%), *Iseilema fragile* (3, 13%), *Panicum indet.* (2, 13%), *Sarga plumosum* (1, 13%), *Sporobolus australasicus* (13%), *Aristida perniciososa* (8%), *Bothriochloa decipiens* (12, 8%), *Bothriochloa decipiens* var. *decipiens* (5, 8%), *Chloris virgata** (5, 8%), *Dichanthium sericeum* (1, 8%), *Dichanthium tenue* (5, 8%), *Digitaria ciliaris** (8%), *Digitaria indet.* (7, 8%), *Enneapogon polyphyllus* (3, 8%), *Eulalia aurea* (1, 8%), *Mnesithea rottboellioides* (3, 8%), *Ophiuros exaltatus* (8, 8%), *Panicum decompositum* (8%), *Pennisetum ciliare** (1, 8%), *Poaceae indet.* (4, 8%), *Themeda quadrivalvis** (8%), *Urochloa gilesii* (8%)

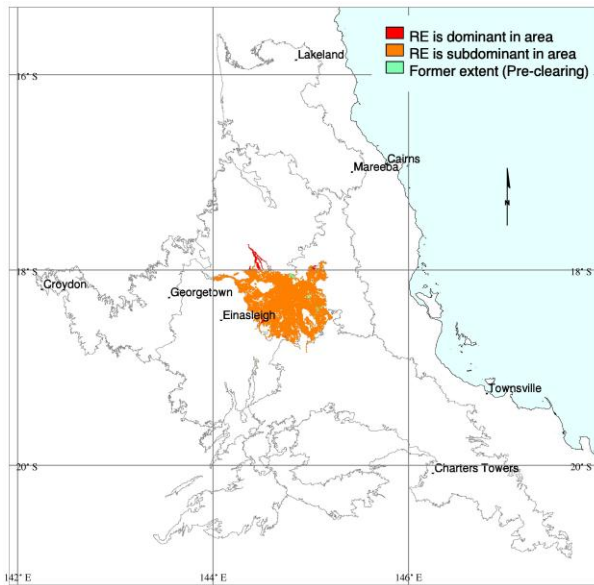
FORBS: *Grewia retusifolia* (58%), *Indigofera linnaei* (42%), *Indigofera linifolia* (33%), *Rhynchosia minima* (29%), *Boerhavia indet.* (21%), *Indigofera pratensis* (21%), *Rostellularia adscendens* (21%), *Asteraceae indet.* (17%), *Crotalaria medicaginea* (17%), *Indigofera hirsuta* (1, 17%), *Ipomoea eriocarpa* (17%), *Ipomoea plebeia* (17%), *Alternanthera nana* (13%), *Bidens pilosa** (13%), *Boerhavia dominii* (13%), *Breynia oblongifolia* (13%), *Chamaesyce indet.* (13%), *Crotalaria juncea** (13%), *Cyanthillium cinereum* (13%), *Glycine tomentella* (13%), *Sida spinosa** (13%), *Spermacoce indet.* (13%), *Trichodesma zeylanicum* (13%), *Tridax procumbens** (13%), *Waltheria indica* (13%), *Acanthospermum hispidum** (8%), *Brunoniella acaulis* (8%), *Brunoniella australis* (8%), *Cayratia trifolia* (1, 8%), *Crotalaria goreensis** (8%), *Crotalaria montana* (8%), *Cucumis melo subsp. agrestis* (8%), *Euphorbia indet.* (8%), *Evolvulus alsinoides* (8%), *Galactia indet.* (8%), *Galactia tenuiflora* (8%), *Galactia tenuiflora forma sericea* (1, 8%), *Heliotropium brachygyne* (8%), *Hibiscus meraukensis* (8%), *Hybanthus enneaspermus* (8%), *Indigofera indet.* (8%), *Ipomoea polymorpha* (8%), *Malvastrum americanum** (8%), *Marsdenia viridiflora* (8%), *Melhania oblongifolia* (8%), *Mukia maderaspatana* (8%), *Peripleura hispidula* (8%), *Polycarpha corymbosa* (8%), *Portulaca oleracea** (8%), *Pterocaulon sphacelatum* (8%), *Salsola kali* (8%), *Sida fibulifera* (8%), *Sida hackettiana* (8%), *Sida indet.* (8%), *Solanum ellipticum* (8%), *Spermacoce brachystema* (8%), *Stylosanthes indet.* (3, 8%), *Wedelia spilanthis* (8%)

Dominant species: Relative cover (mean of cover of species / total cover of all species in that stratum for all values > zero) and frequency (percent of total sites) ordered by decreasing relative abundance. Up to five most dominant species with frequency > 20% listed for each stratum.

Frequent species: Cover (mean of all values > zero) and frequency (percent of total sites) of all species occurring in more than 5% of sites ordered by decreasing frequency. Ground layer species are listed as either graminoid or forb.

Naturalised species have an asterisk (*) after the name. indet. after listed name = indeterminate species or genus

Eucalyptus leptophleba +/- C. erythrophloia +/- C. dallachiana open-woodland on basalt plains



J.R. Clarkson

Pre-clearing area (ha), remnant area (ha) and per cent remaining: 85,400 83,136 97%

Species recorded: Total: 87; woody: 19; ground: 71; Avg. spp./site: 19.2; std dev.: 9.3, 6 site(s)

Basal area: Avg./site: 5.4 m²/ha, range: 4.0 - 7 m²/ha, std. deviation: 1 m²/ha, 5 site(s)

Structural formation: Open-woodland: 50%; woodland: 33%; low woodland: 17%, 6 site(s)

Representative sites: 26034, 26092, 26169, 26277, 26291, 26524.

Stratum: T1

Height avg. = 12.2m, range 8-16m, 6 sites

Crown cover avg. = 16.6%, range 6.1-27.0%, 6 sites

Stem density/ha avg. = 120, range 20-220, 5 sites

Dominant species (relative cover, frequency): Corymbia erythrophloia (72, 33%), Eucalyptus leptophleba (45, 100%)

Frequent species (cover, frequency): Eucalyptus leptophleba (5, 100%), Corymbia erythrophloia (14, 33%), Bursaria incana (1, 17%), Corymbia clarksoniana (17%), Corymbia dallachiana (6, 17%), Corymbia intermedia (10, 17%), Eucalyptus crebra (17%), Eucalyptus platyphylla (12, 17%)

Stratum: T2

Height avg. = 6.5m, range 6-7m, 2 sites

Crown cover avg. = 8.9%, range 6.1-11.8%, 2 sites

Stem density/ha avg. = 170, range 140-200, 2 sites

Dominant species (relative cover, frequency): Eucalyptus leptophleba (3, 33%)

Frequent species (cover, frequency): Eucalyptus leptophleba (33%), Atalaya hemiglauca (17%), Corymbia dallachiana (9, 17%), Corymbia erythrophloia (5, 17%), Hakea persiehana (17%)

Dominant species: Relative cover (mean of cover of species / total cover of all species in that stratum for all values > zero) and frequency (percent of total sites) ordered by decreasing relative abundance. Up to five most dominant species with frequency > 20% listed for each stratum.

Frequent species: Cover (mean of all values > zero) and frequency (percent of total sites) of all species occurring in more than 5% of sites ordered by decreasing frequency. Ground layer species are listed as either graminoid or forb.

Naturalised species have an asterisk (*) after the name. indet. after listed name = indeterminate species or genus

Stratum: S1

Height avg. = 2.1m, range 0.8-4m, 6 sites

Crown cover avg. = 0.1%, range 0.0-0.6%, 6 sites

Stem density/ha avg. = 173, range 100-280, 3 sites

Dominant species (relative cover, frequency): Eucalyptus leptophleba (24, 33%)

Frequent species (cover, frequency): Eucalyptus leptophleba (33%), Atalaya hemiglauca (17%), Carissa lanceolata (17%), Corymbia clarksoniana (1, 17%), Corymbia erythrophloia (17%), Eucalyptus platyphylla (17%), Grevillea mimosoides (17%), Grevillea parallela (17%), Grewia retusifolia (17%), Hakea persiehana (17%), Maytenus cunninghamii (17%), Maytenus disperma (17%), Petalostigma pubescens (17%), Planchonia careya (17%), Santalum lanceolatum (17%)

Stratum: G

Height avg. = 0.7m, range 0.5-1m, 6 sites

PFC avg. = 65.5%, range 37-82%, 6 sites

Dominant species (relative cover, frequency): Heteropogon contortus (59, 100%), Themeda triandra (45, 33%), Dichanthium indet. (13, 50%), Tridax procumbens (6, 33%), Grewia retusifolia (3, 67%)*

Frequent species (cover, frequency): GRAMINOIDS: Heteropogon contortus (28, 100%), Dichanthium indet. (10, 50%), Melinis repens (2, 33%), Panicum indet. (33%), Themeda triandra (24, 33%), Aristida indet. (1, 17%), Arundinella nepalensis (17%), Bothriochloa indet. (10, 17%), Chloris gayana* (17%), Chrysopogon indet. (17%), Cyperus fulvus (17%), Digitaria brownii (17%), Fimbristylis indet. (17%), Mnesithea rottboellioides (17%), Sarga plumosum (2, 17%), Schizachyrium indet. (6, 17%), Scleria brownii (17%), Sporobolus jacquemontii* (17%), Themeda quadrivalvis* (17%)*

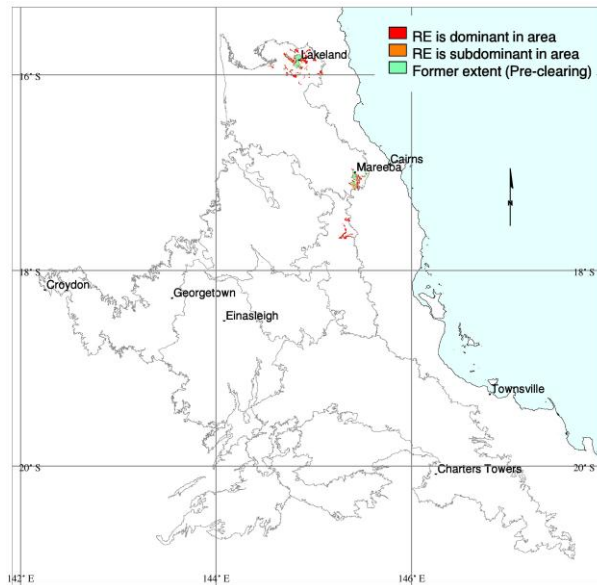
FORBS: Grewia retusifolia (2, 67%), Flemingia parviflora (50%), Fabaceae indet. (33%), Pterocaulon redolens (33%), Rhynchosia minima (33%), Tridax procumbens (3, 33%), Achyranthes aspera (17%), Atalaya hemiglauca (6, 17%), Campylocarpha barbata (17%), Cayratia indet. (17%), Cayratia trifolia (17%), Chamaecrista mimosoides (17%), Crotalaria indet. (17%), Crotalaria medicaginea (17%), Cyathium cinereum (17%), Desmodium gangeticum (17%), Desmodium varians (17%), Dianella caerulea (17%), Emilia sonchifolia* (1, 17%), Epaltes australis (17%), Galactia muelleri (17%), Galactia tenuiflora (17%), Glycine indet. (17%), Goodenia indet. (17%), Indigofera hirsuta (17%), Indigofera indet. (17%), Indigofera linifolia (5, 17%), Indigofera pratensis (17%), Lamiaceae indet. (2, 17%), Malvaceae indet. (17%), Malvastrum americanum var. americanum* (17%), Marsilea hirsuta (17%), Maytenus cunninghamii (1, 17%), Melhania oblongifolia (1, 17%), Phyllanthus virgatus (17%), Pimelea indet. (17%), Polygala indet. (17%), Praxelis clematidea* (1, 17%), Pterocaulon indet. (17%), Pterocaulon sphacelatum (17%), Rhynchosia indet. (17%), Rostellularia adscendens (1, 17%), Ruellia tuberosa* (2, 17%), Senna artemisioides (17%), Sida cordifolia* (17%), Sida hackettiana (2, 17%), Spermocoe brachystema (1, 17%), Stylosanthes scabra* (17%), Trichodesma zeylanicum (2, 17%), Waltheria indica (17%), Zornia dyctiocarpa (17%), Zornia indet. (1, 17%)*

Dominant species: Relative cover (mean of cover of species / total cover of all species in that stratum for all values > zero) and frequency (percent of total sites) ordered by decreasing relative abundance. Up to five most dominant species with frequency > 20% listed for each stratum.

Frequent species: Cover (mean of all values > zero) and frequency (percent of total sites) of all species occurring in more than 5% of sites ordered by decreasing frequency. Ground layer species are listed as either graminoid or forb.

Naturalised species have an asterisk (*) after the name. indet. after listed name = indeterminate species or genus

Eucalyptus leptophleba +/- Corymbia clarksoniana +/- Corymbia dallachiana woodland on Tertiary basalts



M. Newton

Pre-clearing area (ha), remnant area (ha) and per cent remaining: 35,439 17,028 48%

Species recorded: Total: 109; woody: 29; ground: 93; Avg. spp./site: 24.0; std dev.: 6.1, 8 site(s)

Basal area: Avg./site: 7.2 m²/ha, range: 4.0 - 11 m²/ha, std. deviation: 2 m²/ha, 9 site(s)

Structural formation: Woodland: 70%; open-woodland: 30%, 10 site(s)

Representative sites: 25802, 25856, 25860, 25865, 25866, 25994, 25995, 25997, 26909, 39164.

Stratum: T1

Height avg. = 18.1m, range 12-23m, 10 sites

Crown cover avg. = 28.9%, range 11.8-54.3%, 10 sites

Stem density/ha avg. = 159, range 80-300, 10 sites

Dominant species (relative cover, frequency): Eucalyptus leptophleba (51, 90%), Corymbia clarksoniana (49, 70%), Eucalyptus cullenii (39, 30%), Corymbia erythrophloia (8, 30%), Corymbia dallachiana (4, 50%)

Frequent species (cover, frequency): Eucalyptus leptophleba (9, 90%), Corymbia clarksoniana (21, 70%), Corymbia dallachiana (1, 50%), Corymbia erythrophloia (1, 30%), Eucalyptus cullenii (20, 30%), Corymbia nesophila (10%), Cymbidium canaliculatum (10%), Eucalyptus platyphylla (10%)

Stratum: T2

Height avg. = 8.5m, range 4-17m, 8 sites

Crown cover avg. = 3.1%, range 0.0-15.9%, 8 sites

Stem density/ha avg. = 73, range 20-160, 8 sites

Dominant species (relative cover, frequency): Eucalyptus leptophleba (57, 30%), Corymbia clarksoniana (39, 30%)

Frequent species (cover, frequency): Corymbia clarksoniana (30%), Eucalyptus leptophleba (1, 30%), Corymbia erythrophloia (20%), Grevillea glauca (20%), Acacia oraria (2, 10%), Corymbia dallachiana (1, 10%), Erythrina vespertilio (10%), Melaleuca nervosa (10%), Melaleuca viridiflora (1, 10%)

Dominant species: Relative cover (mean of cover of species / total cover of all species in that stratum for all values > zero) and frequency (percent of total sites) ordered by decreasing relative abundance. Up to five most dominant species with frequency > 20% listed for each stratum.

Frequent species: Cover (mean of all values > zero) and frequency (percent of total sites) of all species occurring in more than 5% of sites ordered by decreasing frequency. Ground layer species are listed as either graminoid or forb.

Naturalised species have an asterisk (*) after the name. indet. after listed name = indeterminate species or genus

Stratum: S1

Height avg. = 1.6m, range 0.5-4m, 8 sites

Crown cover avg. = 0.5%, range 0.0-1.6%, 8 sites

Stem density/ha avg. = 306, range 40-1100, 8 sites

Dominant species (relative cover, frequency): *Planchonia careya* (19, 60%), *Eucalyptus leptophleba* (19, 40%), *Corymbia clarksoniana* (18, 50%), *Grewia retusifolia* (18, 40%)

Frequent species (cover, frequency): *Mnesithea rottboellioides* (10%), *Planchonia careya* (60%), *Corymbia clarksoniana* (50%), *Eucalyptus leptophleba* (40%), *Grewia retusifolia* (40%), *Antidesma ghaesembilla* (20%), *Cayratia trifolia* (20%), *Corymbia dallachiana* (20%), *Corymbia erythrophloia* (20%), *Grevillea glauca* (20%), *Acacia bidwillii* (10%), *Acacia oraria* (10%), *Bursaria spinosa* (10%), *Capparis* *indet.* (10%), *Eucalyptus cullenii* (10%), *Flueggea virosa* *subsp. melanthesoides* (10%), *Grevillea mimosoides* (10%), *Hakea persiehana* (10%), *Indigofera* *indet.* (10%), *Indigofera pratensis* (10%), *Melaleuca nervosa* (10%), *Melaleuca viridiflora* (10%), *Santalum lanceolatum* (10%), *Siphonodon pendulus* (10%), *Xylomelum scottianum* (10%)

Stratum: G

Height avg. = 0.7m, range 0.4-1m, 8 sites

PFC avg. = 63.5%, range 28-100%, 8 sites

Dominant species (relative cover, frequency): *Heteropogon contortus* (35, 80%), *Themeda triandra* (17, 60%), *Themeda quadrivalvis** (8, 40%), *Hyptis suaveolens** (7, 30%), *Panicum* *indet.* (6, 50%)

Frequent species (cover, frequency): **GRAMINOIDS:** *Heteropogon contortus* (18, 80%), *Heteropogon triticeus* (60%), *Themeda triandra* (9, 60%), *Panicum* *indet.* (2, 50%), *Themeda quadrivalvis** (4, 40%), *Sarga plumosum* (2, 30%), *Cyperus* *indet.* (1, 20%), *Mnesithea rottboellioides* (1, 20%), *Aristida* *indet.* (1, 10%), *Arundinella setosa* (10%), *Bothriochloa bladhii* (2, 10%), *Capillipedium* *indet.* (35, 10%), *Cymbopogon bombycinus* (10%), *Dichanthium* *indet.* (10%), *Eragrostiella* *indet.* (10%), *Eragrostis* *indet.* (10%), *Fimbristylis* *indet.* (4, 10%), *Melinis repens** (10%), *Mnesithea formosa* (10%), *Pseudopogonatherum contortum* (10%), *Schizachyrium* *indet.* (1, 10%), *Scleria* *indet.* (2, 10%), *Setaria surgens* (10%), *Sorghum* *indet.* (1, 10%), *Thaumastochloa* *indet.* (1, 10%), *Themeda arguens* (2, 10%)

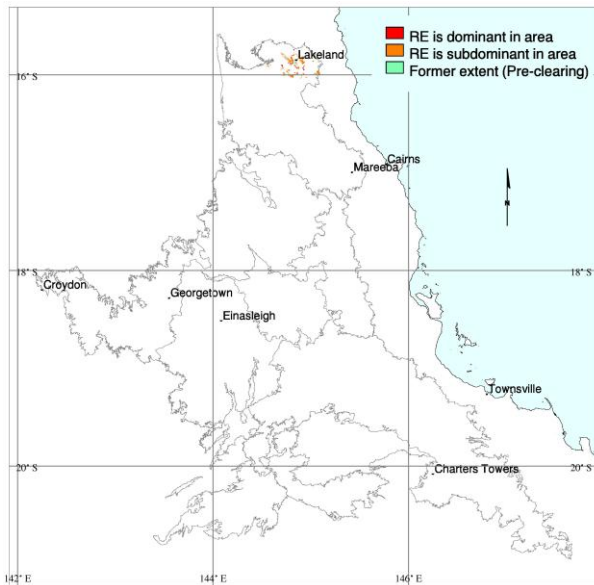
FORBS: *Crotalaria montana* (1, 50%), *Crotalaria goreensis** (1, 40%), *Glycine* *indet.* (1, 40%), *Sida* *indet.* (40%), *Cayratia trifolia* (30%), *Crotalaria calycina* (30%), *Hyptis suaveolens** (2, 30%), *Stylosanthes* *indet.* (30%), *Cajanus* *indet.* (20%), *Chamaecrista mimosoides* (20%), *Crotalaria medicaginea* (1, 20%), *Flemingia parviflora* (20%), *Grevillea parallela* (20%), *Grewia retusifolia* (20%), *Indigofera pratensis* (20%), *Ipomoea eriocarpa* (2, 20%), *Ipomoea polymorpha* (20%), *Planchonia careya* (20%), *Rhynchosia minima* (20%), *Abelmoschus moschatus* (1, 10%), *Acacia bidwillii* (10%), *Alternanthera* *indet.* (10%), *Alysicarpus rugosus* *subsp. rugosus* (3, 10%), *Blumea saxatilis* (10%), *Brunoniella acaulis* (10%), *Cassia* *indet.* (10%), *Chamaecrista absus* *var. absus* (2, 10%), *Cissus* *indet.* (10%), *Clematicissus opaca* (10%), *Corymbia erythrophloia* (10%), *Croton* *indet.* (10%), *Cymbidium canaliculatum* (10%), *Desmodium* *indet.* (10%), *Eucalyptus leptophleba* (10%), *Grevillea glauca* (10%), *Grevillea mimosoides* (10%), *Grewia latifolia* (10%), *Indigofera hirsuta* (10%), *Indigofera linifolia* (10%), *Ipomoea* *indet.* (10%), *Maytenus cunninghamii* (10%), *Passiflora foetida** (10%), *Phyllanthus fuernrohrii* (10%), *Pterocarpus* *indet.* (10%), *Rostellularia adscendens* (10%), *Sida spinosa** (10%), *Spermacoce brachystema* (10%), *Striga* *indet.* (10%), *Stylosanthes guianensis** (10%), *Stylosanthes scabra** (1, 10%), *Tephrosia filipes* (10%), *Tephrosia* *indet.* (10%), *Trichodesma zeylanicum* (10%), *Triumfetta rhomboidea** (10%), *Uraria* *indet.* (10%), *Uraria lagopodioides* (10%), *Uvaria* *indet.* (10%), *Vigna* *indet.* (10%), *Xenostegia tridentata* (10%), *Xylomelum scottianum* (10%), *Zornia* *indet.* (10%)

Dominant species: Relative cover (mean of cover of species / total cover of all species in that stratum for all values > zero) and frequency (percent of total sites) ordered by decreasing relative abundance. Up to five most dominant species with frequency > 20% listed for each stratum.

Frequent species: Cover (mean of all values > zero) and frequency (percent of total sites) of all species occurring in more than 5% of sites ordered by decreasing frequency. Ground layer species are listed as either graminoid or forb.

Naturalised species have an asterisk (*) after the name. *indet.* after listed name = indeterminate species or genus

Corymbia erythrophloia +/- Eucalyptus leptophleba +/- C. dallachiana woodland on edges of basalt flows



Pre-clearing area (ha), remnant area (ha) and per cent remaining: 4,714 3,134 66%

Species recorded: Total: 36; woody: 7; ground: 30; Avg. spp./site: 24.0; std dev.: 4.0, 2 site(s)

Basal area: Avg./site: 6.5 m²/ha, range: 6.0 - 7 m²/ha, std. deviation: 1 m²/ha, 2 site(s)

Structural formation: Woodland: 100%, 2 site(s)

Representative sites: 25805, 25859.

Stratum: T1

Height avg. = 12.0m, range 11-13m, 2 sites

Crown cover avg. = 41.0%, range 31.4-50.5%, 2 sites

Stem density/ha avg. = 220, range 200-240, 2 sites

Dominant species (relative cover, frequency): Corymbia erythrophloia (97, 100%), Eucalyptus leptophleba (6, 50%)

Frequent species (cover, frequency): Corymbia erythrophloia (39, 100%), Eucalyptus leptophleba (2, 50%)

Stratum: T2

Height avg. = 7.5m, 1 site

Crown cover avg. = 6.1%, 1 site

Stem density/ha avg. = 120, 1 site

Dominant species (relative cover, frequency): Erythrina vespertilio (64, 50%), Corymbia erythrophloia (36, 50%)

Frequent species (cover, frequency): Corymbia erythrophloia (2, 50%), Erythrina vespertilio (3, 50%), Terminalia platyphylla (50%)

Dominant species: Relative cover (mean of cover of species / total cover of all species in that stratum for all values > zero) and frequency (percent of total sites) ordered by decreasing relative abundance. Up to five most dominant species with frequency > 20% listed for each stratum.

Frequent species: Cover (mean of all values > zero) and frequency (percent of total sites) of all species occurring in more than 5% of sites ordered by decreasing frequency. Ground layer species are listed as either graminoid or forb.

Naturalised species have an asterisk (*) after the name. indet. after listed name = indeterminate species or genus

Stratum: S1

Height avg. = 1.0m, range 0.4-1.5m, 2 sites

Crown cover avg. = 8.3%, range 0.6-15.9%, 2 sites

Stem density/ha avg. = 1600, range 360-2840, 2 sites

Dominant species (relative cover, frequency): *Grevillea mimosoides* (25, 50%), *Eucalyptus leptophleba* (25, 50%), *Grewia retusifolia* (23, 100%), *Corymbia erythrophloia* (23, 100%), *Terminalia platyphylla* (20, 50%)

Frequent species (cover, frequency): *Corymbia erythrophloia* (100%), *Grewia retusifolia* (100%), *Antidesma ghaesembilla* (50%), *Erythrina vespertilio* (50%), *Eucalyptus leptophleba* (50%), *Grevillea mimosoides* (50%), *Terminalia platyphylla* (50%)

Stratum: G

Height avg. = 0.8m, range 0.7-0.8m, 2 sites

PFC avg. = 36.5%, range 28-45%, 2 sites

Dominant species (relative cover, frequency): *Heteropogon contortus* (59, 100%), *Dichanthium indet.* (9, 100%), *Heteropogon triticeus* (8, 100%), *Themeda quadrivalvis** (7, 50%), *Grewia retusifolia* (7, 50%)

Frequent species (cover, frequency): **GRAMINOIDS:** *Capillipedium parviflorum* (1, 100%), *Dichanthium indet.* (3, 100%), *Heteropogon contortus* (22, 100%), *Heteropogon triticeus* (3, 100%), *Panicum indet.* (1, 100%), *Themeda triandra* (100%), *Mnesithea rottboellioides* (50%), *Sarga plumosum* (50%), *Schizachyrium indet.* (1, 50%), *Scleria indet.* (50%), *Sporobolus indet.* (50%), *Themeda quadrivalvis** (2, 50%)

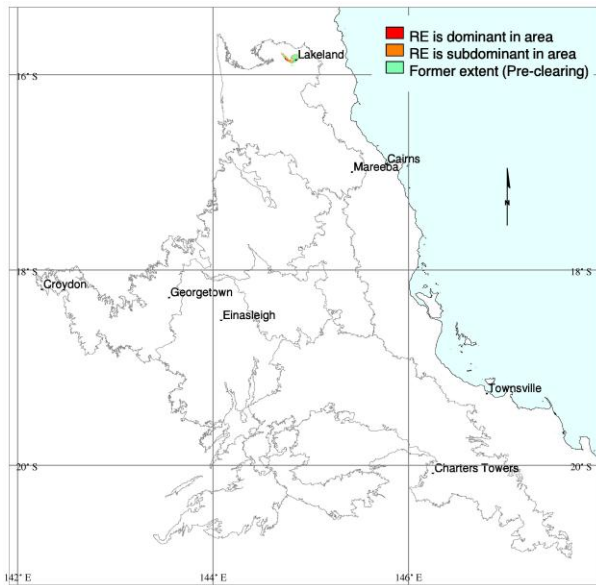
FORBS: *Crotalaria montana* (2, 100%), *Cyanthillium cinereum* (100%), *Hyptis suaveolens** (100%), *Ipomoea eriocarpa* (1, 100%), *Abelmoschus moschatus subsp. tuberosus* (50%), *Aristolochia indet.* (50%), *Brunoniella acaulis* (50%), *Buchnera indet.* (50%), *Chamaecrista mimosoides* (50%), *Grewia retusifolia* (2, 50%), *Indigofera linifolia* (50%), *Indigofera linnaei* (50%), *Mukia indet.* (1, 50%), *Rostellularia adscendens* (50%), *Spermacoce indet.* (50%), *Stylosanthes indet.* (50%), *Uraria indet.* (1, 50%), *Uraria lagopodioides* (50%)

Dominant species: Relative cover (mean of cover of species / total cover of all species in that stratum for all values > zero) and frequency (percent of total sites) ordered by decreasing relative abundance. Up to five most dominant species with frequency > 20% listed for each stratum.

Frequent species: Cover (mean of all values > zero) and frequency (percent of total sites) of all species occurring in more than 5% of sites ordered by decreasing frequency. Ground layer species are listed as either graminoid or forb.

Naturalised species have an asterisk (*) after the name. indet. after listed name = indeterminate species or genus

Terminalia aridicola subsp. chillagoensis and T. platyphylla low woodland on clay soils



E.A. Addicott

Pre-clearing area (ha), remnant area (ha) and per cent remaining: 1,185 485 41%

Species recorded: Total: 8; woody: 5; ground: 5; Average species per site and standard deviation not available

Basal area: Avg./site: 2.0 m²/ha, range: 2.0 - 2 m²/ha, std. deviation: 0 m²/ha, 1 site(s)

Structural formation: Low woodland: 100%, 1 site(s)

Representative sites: 40604.

Stratum: T1

Height avg. = 8.0m, 1 site

Crown cover avg. = 35.9%, 1 site

Stem density/ha avg. = 140, 1 site

Dominant species (relative cover, frequency): Terminalia platyphylla (100, 100%)

Frequent species (cover, frequency): Eucalyptus leptophleba (100%), Terminalia platyphylla (37, 100%)

Stratum: T2

Height avg. = 5.0m, 1 site

Crown cover avg. = 0.6%, 1 site

Stem density/ha avg. = 40, 1 site

Dominant species (relative cover, frequency): Terminalia platyphylla (100, 100%)

Frequent species (cover, frequency): Terminalia platyphylla (1, 100%)

Dominant species: Relative cover (mean of cover of species / total cover of all species in that stratum for all values > zero) and frequency (percent of total sites) ordered by decreasing relative abundance. Up to five most dominant species with frequency > 20% listed for each stratum.

Frequent species: Cover (mean of all values > zero) and frequency (percent of total sites) of all species occurring in more than 5% of sites ordered by decreasing frequency. Ground layer species are listed as either graminoid or forb.

Naturalised species have an asterisk (*) after the name. indet. after listed name = indeterminate species or genus

Stratum: S1

Height avg. = 1.5m, 1 site

Crown cover avg. = 0.6%, 1 site

Stem density/ha avg. = 140, 1 site

Dominant species (relative cover, frequency): Terminalia platyphylla (91, 100%), Grewia retusifolia (3, 100%), Flueggea virosa subsp. melanthesoides (3, 100%), Corymbia confertiflora (3, 100%)

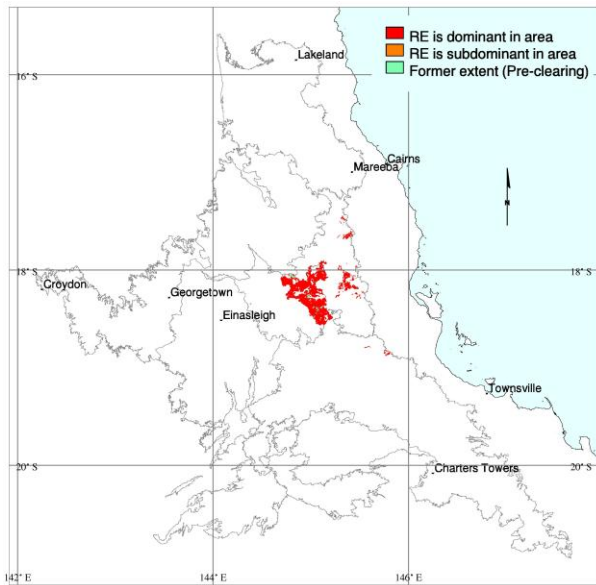
Frequent species (cover, frequency): Corymbia confertiflora (100%), Flueggea virosa subsp. melanthesoides (100%), Grewia retusifolia (100%), Terminalia platyphylla (1, 100%)

Dominant species: Relative cover (mean of cover of species / total cover of all species in that stratum for all values > zero) and frequency (percent of total sites) ordered by decreasing relative abundance. Up to five most dominant species with frequency > 20% listed for each stratum.

Frequent species: Cover (mean of all values > zero) and frequency (percent of total sites) of all species occurring in more than 5% of sites ordered by decreasing frequency. Ground layer species are listed as either graminoid or forb.

Naturalised species have an asterisk (*) after the name. indet. after listed name = indeterminate species or genus

Eucalyptus crebra or E. granitica +/- Corymbia intermedia woodland on basalt plains



M. Newton

Pre-clearing area (ha), remnant area (ha) and per cent remaining: 77,669 73,573 95%

Species recorded: Total: 177; woody: 24; ground: 163; Avg. spp./site: 29.3; std dev.: 13.1, 10 site(s)

Basal area: Avg./site: 9.0 m²/ha, range: 4.5 - 18 m²/ha, std. deviation: 4 m²/ha, 8 site(s)

Structural formation: Woodland: 60%; open-woodland: 40%, 10 site(s)

Representative sites: 25575, 26033, 26077, 26180, 26183, 26784, 26788, 37444, 37905, 37906.

Stratum: T1

Height avg. = 19.0m, range 15-24m, 10 sites

Crown cover avg. = 26.5%, range 6.1-59.7%, 10 sites

Stem density/ha avg. = 109, range 40-180, 9 sites

Dominant species (relative cover, frequency): *Eucalyptus crebra* (89, 60%), *Eucalyptus granitica* (79, 40%)

Frequent species (cover, frequency): *Eucalyptus crebra* (15, 60%), *Eucalyptus granitica* (26, 40%), *Corymbia tessellaris* (4, 20%), *Corymbia clarksoniana* (10%), *Corymbia intermedia* (18, 10%), *Eucalyptus moluccana* (1, 10%), *Eucalyptus tereticornis* (34, 10%)

Stratum: T2

Height avg. = 8.5m, range 6-12m, 6 sites

Crown cover avg. = 2.5%, range 0.0-11.8%, 6 sites

Stem density/ha avg. = 72, range 20-160, 5 sites

Dominant species (relative cover, frequency): *Eucalyptus crebra* (98, 30%)

Frequent species (cover, frequency): *Eucalyptus crebra* (6, 30%), *Corymbia dallachiana* (20%), *Acacia bidwillii* (10%), *Corymbia clarksoniana* (10%), *Corymbia intermedia* (10%), *Corymbia tessellaris* (10%), *Lophostemon suaveolens* (2, 10%), *Maytenus cunninghamii* (10%)

Dominant species: Relative cover (mean of cover of species / total cover of all species in that stratum for all values > zero) and frequency (percent of total sites) ordered by decreasing relative abundance. Up to five most dominant species with frequency > 20% listed for each stratum.

Frequent species: Cover (mean of all values > zero) and frequency (percent of total sites) of all species occurring in more than 5% of sites ordered by decreasing frequency. Ground layer species are listed as either graminoid or forb.

Naturalised species have an asterisk (*) after the name. indet. after listed name = indeterminate species or genus

Stratum: S1

Height avg. = 1.9m, range 1-3m, 9 sites

Crown cover avg. = 0.2%, range 0.0-0.6%, 9 sites

Stem density/ha avg. = 153, range 40-240, 8 sites

Dominant species (relative cover, frequency): Grevillea parallela (37, 30%), Eucalyptus granitica (31, 30%), Petalostigma pubescens (14, 40%), Corymbia dallachiana (12, 30%)

Frequent species (cover, frequency): Petalostigma pubescens (40%), Corymbia dallachiana (30%), Eucalyptus granitica (30%), Grevillea parallela (30%), Acacia bidwillii (20%), Acacia disparrima (1, 20%), Eucalyptus crebra (20%), Acacia crassicaarpa (10%), Acacia indet. (10%), Callitris intratropica (10%), Cayratia trifolia (10%), Corymbia clarksoniana (10%), Corymbia erythrophloia (10%), Corymbia intermedia (10%), Eucalyptus moluccana (2, 10%), Eucalyptus tereticornis (10%), Lantana camara (10%), Lophostemon suaveolens (10%), Maytenus cunninghamii (10%), Maytenus disperma (10%), Melaleuca nervosa (10%), Melaleuca viridiflora (10%), Planchonia careya (10%)*

Dominant species: Relative cover (mean of cover of species / total cover of all species in that stratum for all values > zero) and frequency (percent of total sites) ordered by decreasing relative abundance. Up to five most dominant species with frequency > 20% listed for each stratum.

Frequent species: Cover (mean of all values > zero) and frequency (percent of total sites) of all species occurring in more than 5% of sites ordered by decreasing frequency. Ground layer species are listed as either graminoid or forb.

Naturalised species have an asterisk (*) after the name. indet. after listed name = indeterminate species or genus

Stratum: G

Height avg. = 0.6m, range 0.2-0.9m, 10 sites

PFC avg. = 63.5%, range 8-92%, 10 sites

Dominant species (relative cover, frequency): Themeda triandra (29, 80%), Heteropogon contortus (28, 80%), Sporobolus jacquemontii (18, 30%), Themeda quadrivalvis* (15, 30%), Flemingia parviflora (5, 40%)*

Frequent species (cover, frequency): GRAMINOIDS: Heteropogon contortus (17, 80%), Themeda triandra (16, 80%), Heteropogon triticeus (60%), Melinis repens (40%), Fimbristylis dichotoma (2, 30%), Mnesithea rottboellioides (1, 30%), Sporobolus jacquemontii* (2, 30%), Themeda quadrivalvis* (13, 30%), Arundinella setosa (1, 20%), Bothriochloa bladhii subsp. bladhii (20%), Capillipedium parviflorum (20%), Chrysopogon fallax (2, 20%), Cyperus indet. (1, 20%), Imperata cylindrica (20%), Panicum effusum var. effusum (20%), Scleria brownii (2, 20%), Abildgaardia ovata (10%), Alloteropsis semialata (10%), Capillipedium spicigerum (1, 10%), Cyperaceae indet. (10%), Cyperus cyperoides (10%), Cyperus fulvus (10%), Cyperus gracilis (10%), Cyperus nervulosus (10%), Cyperus tenuispica (1, 10%), Dichanthium indet. (10%), Dichanthium sericeum subsp. sericeum (10%), Digitaria ciliaris* (10%), Echinochloa indet. (10%), Ectrosia leporina (10%), Enneapogon indet. (4, 10%), Eragrostis brownii (10%), Eragrostis elongata (19, 10%), Eragrostis indet. (10%), Eragrostis leptostachya (10%), Eriachne indet. (1, 10%), Eriachne rara (10%), Eriochloa pseudoacrotricha (10%), Fimbristylis depauperata (19, 10%), Fimbristylis indet. (10%), Fimbristylis microcarya (10%), Fimbristylis nuda (1, 10%), Fuirena ciliaris (1, 10%), Panicum decompositum var. tenuius (10%), Panicum effusum (10%), Panicum indet. (10%), Paspalum indet. (10%), Pseudopogonatherum irritans (10%), Rhynchospora indet. (1, 10%), Sacciolepis indica (1, 10%), Sarga plumosum (10%), Schizachyrium fragile (15, 10%), Schizachyrium indet. (10%), Scleria indet. (3, 10%), Scleria lithosperma var. linearis (10%), Scleria novae-hollandiae (1, 10%), Scleria tricuspidata (10%), Setaria indet. (10%), Setaria pumila subsp. pallidifusca* (10%), Sporobolus indet. (12, 10%)*

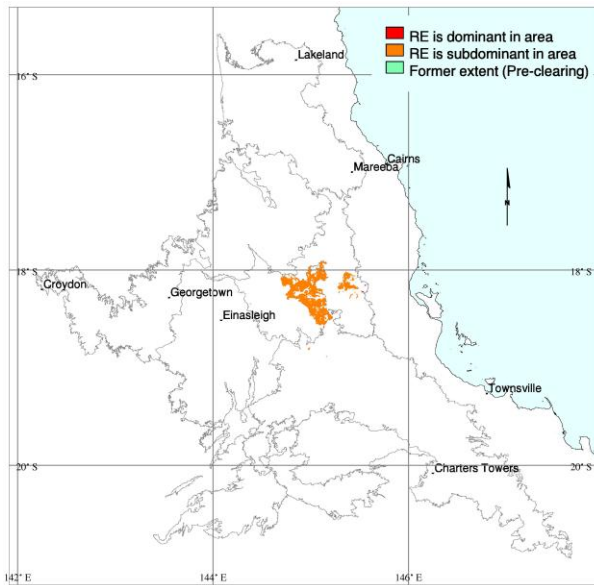
FORBS: Grewia retusifolia (70%), Cyathillium cinereum (60%), Flemingia parviflora (1, 40%), Acmea grandiflora var. brachyglossa (30%), Commelina lanceolata (30%), Crotalaria montana (30%), Desmodium varians (30%), Eustrephus latifolius (30%), Phyllanthus indet. (1, 30%), Praxelis clematidea (1, 30%), Rostellularia adscendens (30%), Sonchus indet. (1, 30%), Stylosanthes scabra* (30%), Asteraceae indet. (20%), Breynia oblongifolia (20%), Chamaecrista nomame (20%), Chamaecrista rotundifolia (20%), Crotalaria brevis (20%), Crotalaria indet. (20%), Crotalaria medicaginea (20%), Desmodium rhytidophyllum (20%), Emilia sonchifolia* (20%), Emilia sonchifolia var. javanica* (20%), Epaltes australis (20%), Galactia indet. (20%), Galactia tenuiflora forma sericea (1, 20%), Hybanthus stellarioides (20%), Indigofera hirsuta (2, 20%), Lomandra longifolia (20%), Mecardonia procumbens* (2, 20%), Rhynchosia minima (20%), Rhynchosia minima var. minima (20%), Sida rhombifolia* (20%), Spermacoce indet. (20%), Spermacoce latifolia* (20%), Uria lagopodioides (1, 20%), Acmea indet. (10%), Alternanthera indet. (10%), Alysicarpus vaginalis* (10%), Amyema bifurcata (10%), Brunoniella acaulis (10%), Brunoniella australis (1, 10%), Cajanus reticulatus (2, 10%), Camptacra barbata (10%), Centipeda minima var. lanuginosa (3, 10%), Chamaecrista mimosoides (10%), Chamaecrista nomame var. nomame (10%), Chamaesyce mitchelliana var. mitchelliana (10%), Clematicissus opaca (10%), Clerodendrum floribundum (10%), Conyza sumatrensis* (10%), Crassocephalum crepidioides* (10%), Crotalaria laburnifolia* (4, 10%), Crotalaria lanceolata subsp. lanceolata* (10%), Crotalaria mitchellii subsp. mitchellii (10%), Cucumis melo subsp. agrestis (10%), Davallia denticulata var. denticulata (1, 10%), Desmodium filiforme (10%), Desmodium triflorum* (10%), Dianella longifolia var. longifolia (10%), Drosera indica (2, 10%), Drosera spatulata (10%), Erechtites valerianifolius (10%), Eriocaulon pusillum (1, 10%), Eucalyptus granitica (1, 10%), Euphorbia indet. (10%), Evolvulus alsinoides (10%), Fabaceae indet. (10%), Galactia muelleri (10%), Glycine clandestina (10%), Goodenia indet. (10%), Grevillea indet. (10%), Grevillea parallela (10%), Indigofera linifolia (10%), Indigofera linnaei (10%), Indigofera pratensis (10%), Indigofera trifoliata (10%), Ipomoea eriocarpa (10%), Ipomoea gracilis (10%), Knoxia sumatrensis (10%), Lobelia indet. (10%), Lobelia quadrangularis (10%), Lomandra multiflora subsp. multiflora (10%), Malvastrum americanum* (10%), Maytenus cunninghamii (10%), Neptunia gracilis (10%), Oldenlandia galioides (1, 10%), Petalostigma pubescens (10%), Phyllanthus virgatus (10%), Portulaca bicolor (1, 10%), Pterocaulon redolens (10%), Rostellularia adscendens var. adscendens (10%), Ruellia tuberosa* (2, 10%), Schenkia australis (10%), Sida hackettiana (10%), Sida indet. (10%), Spermacoce brachystema (10%), Stachytarpheta jamaicensis* (10%), Stylidium cordifolium (2, 10%), Stylosanthes guianensis var. guianensis* (10%), Veronica plebeia (10%), Vigna vexillata var. angustifolia (10%), Wedelia spilanthis (10%)*

Dominant species: Relative cover (mean of cover of species / total cover of all species in that stratum for all values > zero) and frequency (percent of total sites) ordered by decreasing relative abundance. Up to five most dominant species with frequency > 20% listed for each stratum.

Frequent species: Cover (mean of all values > zero) and frequency (percent of total sites) of all species occurring in more than 5% of sites ordered by decreasing frequency. Ground layer species are listed as either graminoid or forb.

Naturalised species have an asterisk (*) after the name. indet. after listed name = indeterminate species or genus

Eucalyptus tereticornis +/- E. crebra +/- C. dallachiana open-woodland on basalt plains



Pre-clearing area (ha), remnant area (ha) and per cent remaining: 49,439 46,972 95%

Species recorded: Total: 38; woody: 7; ground: 34; Avg. spp./site: 17.0; std dev.: 3.6, 3 site(s)

Basal area: Avg./site: 5.8 m²/ha, range: 3.0 - 9 m²/ha, std. deviation: 2 m²/ha, 3 site(s)

Structural formation: Woodland: 67%; open-woodland: 33%, 3 site(s)

Representative sites: 26032, 26078, 26280.

Stratum: T1

Height avg. = 21.0m, range 18-25m, 3 sites

Crown cover avg. = 24.8%, range 11.8-44.4%, 3 sites

Stem density/ha avg. = 60, range 20-100, 3 sites

Dominant species (relative cover, frequency): Eucalyptus tereticornis (55, 100%), Eucalyptus crebra (52, 67%), Corymbia clarksoniana (30, 33%)

Frequent species (cover, frequency): Eucalyptus tereticornis (7, 100%), Eucalyptus crebra (23, 67%), Corymbia clarksoniana (4, 33%), Corymbia dallachiana (33%)

Stratum: S1

Height avg. = 1.3m, range 1-1.5m, 2 sites

Crown cover avg. = 0.3%, range 0.0-0.6%, 2 sites

Stem density/ha avg. = 1440, 1 site

Dominant species (relative cover, frequency): Grewia retusifolia (56, 33%), Grevillea parallela (31, 33%), Marsdenia viridiflora (4, 33%), Eucalyptus tereticornis (4, 33%), Corymbia clarksoniana (4, 33%)

Frequent species (cover, frequency): Corymbia clarksoniana (33%), Eucalyptus tereticornis (33%), Grevillea parallela (33%), Grewia retusifolia (33%), Marsdenia viridiflora (33%)

Dominant species: Relative cover (mean of cover of species / total cover of all species in that stratum for all values > zero) and frequency (percent of total sites) ordered by decreasing relative abundance. Up to five most dominant species with frequency > 20% listed for each stratum.

Frequent species: Cover (mean of all values > zero) and frequency (percent of total sites) of all species occurring in more than 5% of sites ordered by decreasing frequency. Ground layer species are listed as either graminoid or forb.

Naturalised species have an asterisk (*) after the name. indet. after listed name = indeterminate species or genus

Stratum: G

Height avg. = 0.5m, range 0.4-0.5m, 3 sites

PFC avg. = 84.3%, range 78-95%, 3 sites

Dominant species (relative cover, frequency): Themeda triandra (97, 33%), Heteropogon contortus (49, 67%), Dichanthium indet. (16, 67%), Eucalyptus tereticornis (13, 33%), Themeda quadrivalvis (11, 67%)*

Frequent species (cover, frequency): GRAMINOIDS: Dichanthium indet. (13, 67%), Heteropogon contortus (39, 67%), Sporobolus indet. (7, 67%), Themeda quadrivalvis (9, 67%), Abildgaardia ovata (1, 33%), Eriochloa indet. (1, 33%), Heteropogon triticeus (2, 33%), Scleria brownii (33%), Setaria indet. (33%), Themeda triandra (93, 33%)*

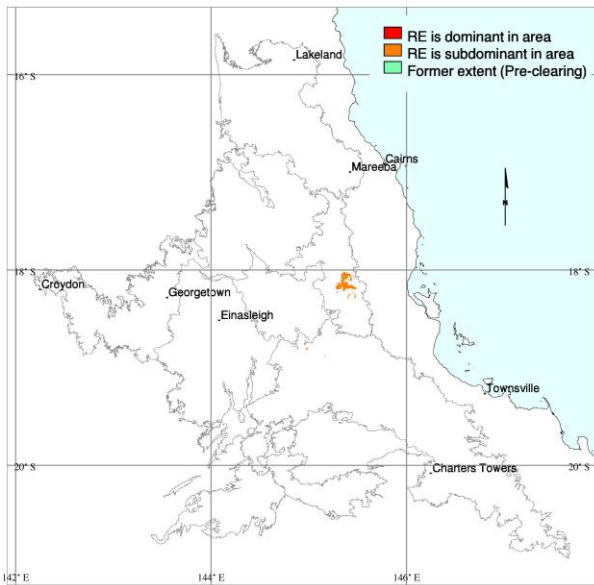
FORBS: Cyathillium cinereum (67%), Fabaceae indet. (1, 67%), Grewia retusifolia (67%), Mecardonia procumbens (67%), Stylosanthes indet. (67%), Acmea grandiflora var. brachyglossa (33%), Asteraceae indet. (2, 33%), Brunoniella australis (33%), Cajanus indet. (1, 33%), Chamaecrista mimosoides (33%), Corymbia dallachiana (33%), Dianella indet. (1, 33%), Eucalyptus tereticornis (10, 33%), Evolvulus alsinoides (33%), Galactia muelleri (33%), Glycine indet. (33%), Indigofera indet. (33%), Indigofera linifolia (33%), Ipomoea eriocarpa (3, 33%), Rhynchosia minima (33%), Ruellia tuberosa* (2, 33%), Sonchus indet. (33%), Spermacoe indet. (33%), Wedelia indet. (33%)*

Dominant species: Relative cover (mean of cover of species / total cover of all species in that stratum for all values > zero) and frequency (percent of total sites) ordered by decreasing relative abundance. Up to five most dominant species with frequency > 20% listed for each stratum.

Frequent species: Cover (mean of all values > zero) and frequency (percent of total sites) of all species occurring in more than 5% of sites ordered by decreasing frequency. Ground layer species are listed as either graminoid or forb.

Naturalised species have an asterisk (*) after the name. indet. after listed name = indeterminate species or genus

Eucalyptus moluccana +/- E. crebra +/- E. platyphylla open-woodland on basalt plains



M. Newton

Pre-clearing area (ha), remnant area (ha) and per cent remaining: 1,812 1,721 95%

Species recorded: Total: 48; woody: 5; ground: 43; Avg. spp./site: 19.3; std dev.: 3.3, 3 site(s)

Basal area: Avg./site: 5.9 m²/ha, range: 3.8 - 10 m²/ha, std. deviation: 3 m²/ha, 3 site(s)

Structural formation: Open-woodland: 67%; woodland: 33%, 3 site(s)

Representative sites: 26079, 27025, 37309.

Stratum: T1

Height avg. = 16.3m, range 12-20m, 3 sites

Crown cover avg. = 34.6%, range 13.8-63.1%, 3 sites

Stem density/ha avg. = 187, range 60-400, 3 sites

Dominant species (relative cover, frequency): Eucalyptus moluccana (100, 100%)

Frequent species (cover, frequency): Eucalyptus moluccana (36, 100%)

Stratum: T2

Height avg. = 7.3m, range 6-8m, 3 sites

Crown cover avg. = 2.2%, range 0.6-4.4%, 3 sites

Stem density/ha avg. = 280, range 80-540, 3 sites

Dominant species (relative cover, frequency): Corymbia dallachiana (98, 33%), Eucalyptus moluccana (67, 100%)

Frequent species (cover, frequency): Eucalyptus moluccana (2, 100%), Corymbia dallachiana (1, 33%), Eucalyptus crebra (33%)

Dominant species: Relative cover (mean of cover of species / total cover of all species in that stratum for all values > zero) and frequency (percent of total sites) ordered by decreasing relative abundance. Up to five most dominant species with frequency > 20% listed for each stratum.

Frequent species: Cover (mean of all values > zero) and frequency (percent of total sites) of all species occurring in more than 5% of sites ordered by decreasing frequency. Ground layer species are listed as either graminoid or forb.

Naturalised species have an asterisk (*) after the name. indet. after listed name = indeterminate species or genus

Stratum: S1

Height avg. = 1.2m, range 0.8-1.5m, 2 sites

Crown cover avg. = 0.0%, range 0.0-0.0%, 2 sites

Stem density/ha avg. = 340, range 180-500, 2 sites

Dominant species (relative cover, frequency): Sida indet. (94, 33%), Corymbia dallachiana (50, 33%), Eucalyptus moluccana (27, 67%), Maytenus cunninghamii (3, 33%)

Frequent species (cover, frequency): Eucalyptus moluccana (67%), Corymbia dallachiana (33%), Maytenus cunninghamii (33%), Sida indet. (1, 33%)

Stratum: G

Height avg. = 0.2m, range 0.1-0.4m, 3 sites

PFC avg. = 59.0%, range 26-91%, 3 sites

Dominant species (relative cover, frequency): Bothriochloa pertusa (43, 33%), Dichanthium aristatum* (31, 33%), Themeda quadrivalvis* (8, 67%), Chrysopogon indet. (7, 33%), Stylosanthes scabra* (7, 33%)*

Frequent species (cover, frequency): GRAMINOIDS: Heteropogon contortus (2, 100%), Eragrostis indet. (67%), Panicum indet. (67%), Setaria indet. (67%), Sporobolus jacquemontii (67%), Themeda quadrivalvis* (4, 67%), Bothriochloa pertusa* (38, 33%), Brachiaria indet. (33%), Chrysopogon indet. (33%), Cyperus fulvus (33%), Cyperus gracilis (33%), Cyperus indet. (33%), Dichanthium aristatum* (27, 33%), Fimbristylis dichotoma (33%), Ophiuros exaltatus (2, 33%), Scleria indet. (33%), Sporobolus indet. (33%)*

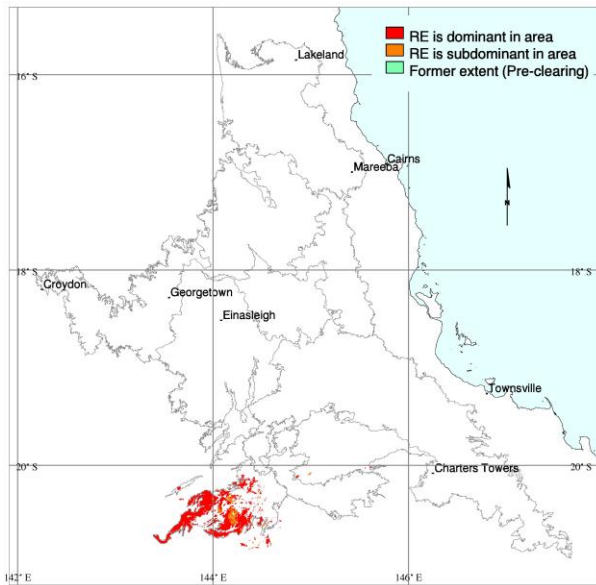
FORBS: Achyranthes aspera (33%), Ammannia multiflora (33%), Brunoniella indet. (33%), Cartonema indet. (33%), Cayratia indet. (33%), Cyathium cinereum (33%), Desmodium pullenii (33%), Dianella indet. (33%), Eremophila debilis (33%), Fabaceae indet. (33%), Galactia tenuiflora var. lucida (33%), Gomphrena celosioides (33%), Grewia retusifolia (33%), Lantana camara* (33%), Lobelia indet. (33%), Mecardonia procumbens* (33%), Mitrasacme indet. (33%), Neptunia gracilis (5, 33%), Polymeria calycina (1, 33%), Portulaca oleracea* (33%), Rhynchosia minima (33%), Ruellia tuberosa* (33%), Sonchus oleraceus* (33%), Spermocoe indet. (33%), Stylosanthes scabra* (33%), Uraria lagopodioides (33%)*

Dominant species: Relative cover (mean of cover of species / total cover of all species in that stratum for all values > zero) and frequency (percent of total sites) ordered by decreasing relative abundance. Up to five most dominant species with frequency > 20% listed for each stratum.

Frequent species: Cover (mean of all values > zero) and frequency (percent of total sites) of all species occurring in more than 5% of sites ordered by decreasing frequency. Ground layer species are listed as either graminoid or forb.

Naturalised species have an asterisk (*) after the name. indet. after listed name = indeterminate species or genus

Astrebla spp. +/- Iseilema vaginiflorum grassland on basalt plains



M. Newton

Pre-clearing area (ha), remnant area (ha) and per cent remaining: 170,553 170,518 100%

Species recorded: Total: 20; woody: 7; ground: 13; Avg. spp./site: 10.0; std dev.: 0.0, 1 site(s)

Basal area: Avg./site: 2.0 m²/ha, range: 2.0 - 2 m²/ha, std. deviation: 0 m²/ha, 1 site(s)

Structural formation: Tussock grassland: 100%, 2 site(s)

Representative sites: 26253, 26634.

Stratum: E

Height avg. = 4.5m, range 2-7m, 2 sites

Crown cover avg. = 2.3%, range 1.6-2.9%, 2 sites

Stem density/ha avg. = 40, 1 site

Dominant species (relative cover, frequency): *Corymbia terminalis* (88, 50%), *Acacia sutherlandii* (71, 50%), *Acacia farnesiana** (26, 50%), *Acacia nilotica* (12, 50%), *Ventilago viminalis* (1, 50%)

Frequent species (cover, frequency): *Acacia farnesiana** (1, 50%), *Acacia nilotica* (50%), *Acacia sutherlandii* (2, 50%), *Atalaya hemiglauca* (50%), *Corymbia terminalis* (2, 50%), *Owenia acidula* (50%), *Ventilago viminalis* (50%)

Stratum: G

Height avg. = 0.3m, 1 site

PFC avg. = 75.0%, 1 site

Dominant species (relative cover, frequency): *Astrebla lappacea* (79, 50%), *Iseilema vaginiflorum* (20, 50%)

Frequent species (cover, frequency): **GRAMINOIDS:** *Astrebla elymoides* (50%), *Astrebla lappacea* (60, 50%), *Digitaria ctenantha* (50%), *Iseilema vaginiflorum* (15, 50%)

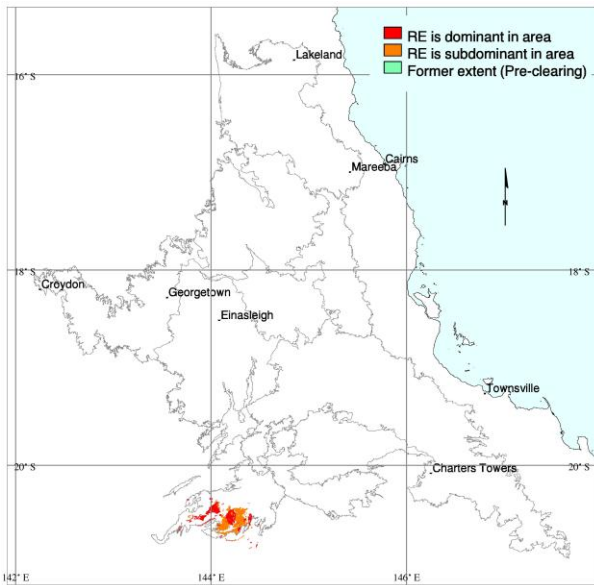
FORBS: *Abelmoschus ficulneus* (50%), *Chamaesyce drummondii* (50%), *Melhania oblongifolia* (50%), *Sida spinosa** (50%)

Dominant species: Relative cover (mean of cover of species / total cover of all species in that stratum for all values > zero) and frequency (percent of total sites) ordered by decreasing relative abundance. Up to five most dominant species with frequency > 20% listed for each stratum.

Frequent species: Cover (mean of all values > zero) and frequency (percent of total sites) of all species occurring in more than 5% of sites ordered by decreasing frequency. Ground layer species are listed as either graminoid or forb.

Naturalised species have an asterisk (*) after the name. indet. after listed name = indeterminate species or genus

Corymbia terminalis open-woodland to grassland



M. Newton

Pre-clearing area (ha), remnant area (ha) and per cent remaining: 34,136 34,087 100%

Species recorded: Total: 25; woody: 13; ground: 14; Avg. spp./site: 25.0; std dev.: 0.0, 1 site(s)

Basal area: Avg./site: 2.5 m²/ha, range: 2.5 - 3 m²/ha, std. deviation: 0 m²/ha, 1 site(s)

Structural formation: Open-woodland: 100%, 1 site(s)

Representative sites: 39365.

Stratum: T1

Height avg. = 9.0m, 1 site

Crown cover avg. = 15.9%, 1 site

Stem density/ha avg. = 60, 1 site

Dominant species (relative cover, frequency): *Corymbia dallachiana* (63, 100%), *Corymbia terminalis* (37, 100%)

Frequent species (cover, frequency): *Corymbia dallachiana* (9, 100%), *Corymbia terminalis* (5, 100%), *Lysiphillum carronii* (100%)

Stratum: T2

Height avg. = 4.0m, 1 site

Crown cover avg. = 0.0%, 1 site

Stem density/ha avg. = 80, 1 site

Dominant species (relative cover, frequency): *Terminalia aridicola* (20, 100%), *Psydrax oleifolia* (20, 100%), *Hakea arborescens* (20, 100%), *Geijera salicifolia* (20, 100%), *Corymbia terminalis* (20, 100%)

Frequent species (cover, frequency): *Corymbia terminalis* (100%), *Geijera salicifolia* (100%), *Hakea arborescens* (100%), *Psydrax oleifolia* (100%), *Terminalia aridicola* (100%)

Dominant species: Relative cover (mean of cover of species / total cover of all species in that stratum for all values > zero) and frequency (percent of total sites) ordered by decreasing relative abundance. Up to five most dominant species with frequency > 20% listed for each stratum.

Frequent species: Cover (mean of all values > zero) and frequency (percent of total sites) of all species occurring in more than 5% of sites ordered by decreasing frequency. Ground layer species are listed as either graminoid or forb.

Naturalised species have an asterisk (*) after the name. indet. after listed name = indeterminate species or genus

Stratum: S1

Height avg. = 1.8m, 1 site

Crown cover avg. = 0.6%, 1 site

Stem density/ha avg. = 480, 1 site

Dominant species (relative cover, frequency): Carissa lanceolata (78, 100%), Santalum lanceolatum (3, 100%), Psydrax oleifolia (3, 100%), Lysiphyllum carronii (3, 100%), Geijera salicifolia (3, 100%)

Frequent species (cover, frequency): Acacia bidwillii (100%), Acacia farnesiana (100%), Carissa lanceolata (1, 100%), Ehretia saligna (100%), Eremophila mitchellii (100%), Geijera salicifolia (100%), Lysiphyllum carronii (100%), Psydrax oleifolia (100%), Santalum lanceolatum (100%)*

Stratum: G

Height avg. = 0.4m, 1 site

PFC avg. = 31.0%, 1 site

Dominant species (relative cover, frequency): Heteropogon contortus (41, 100%), Enneapogon indet. (37, 100%), Eriachne mucronata (9, 100%), Aristida jerichoensis (9, 100%)

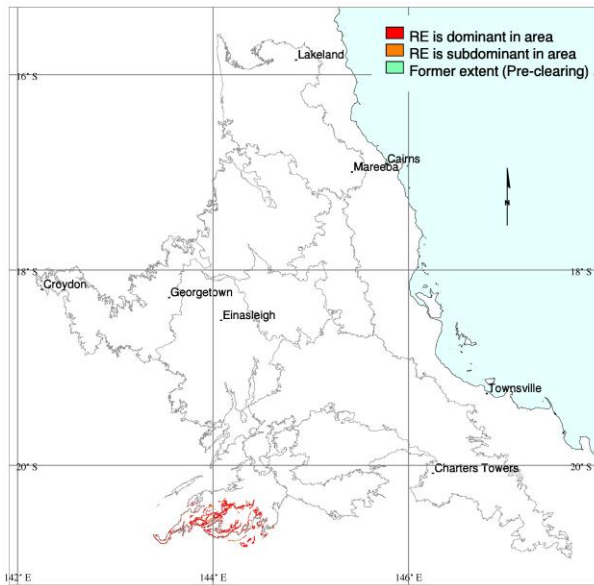
Frequent species (cover, frequency): GRAMINOIDS: Aristida jerichoensis (3, 100%), Enneapogon indet. (12, 100%), Eragrostis tenellula (100%), Eriachne mucronata (3, 100%), Heteropogon contortus (13, 100%), Pennisetum ciliare (100%)
FORBS: Evolvulus alsinoides (100%), Glycine indet. (100%), Indigofera limmaei (100%), Melhania oblongifolia (100%), Phyllanthus indet. (100%), Polycarpaea multicaulis (100%), Pterocaulon indet. (100%), Stylosanthes indet. (100%)*

Dominant species: Relative cover (mean of cover of species / total cover of all species in that stratum for all values > zero) and frequency (percent of total sites) ordered by decreasing relative abundance. Up to five most dominant species with frequency > 20% listed for each stratum.

Frequent species: Cover (mean of all values > zero) and frequency (percent of total sites) of all species occurring in more than 5% of sites ordered by decreasing frequency. Ground layer species are listed as either graminoid or forb.

Naturalised species have an asterisk (*) after the name. indet. after listed name = indeterminate species or genus

Acacia cambagei low open-forest on scree slopes and footslopes of basalt tablelands



M. Newton

Pre-clearing area (ha), remnant area (ha) and per cent remaining: 61,481 61,228 100%

Species recorded: Total: 71; woody: 24; ground: 59; Avg. spp./site: 20.4; std dev.: 13.8, 5 site(s)

Basal area: Avg./site: 15.3 m²/ha, range: 9.0 - 23 m²/ha, std. deviation: 5 m²/ha, 4 site(s)

Structural formation: Low open-forest: 80%; open-forest: 20%, 5 site(s)

Representative sites: 25781, 25788, 26633, 39366, 39367.

Stratum: T1

Height avg. = 8.2m, range 6-11m, 5 sites

Crown cover avg. = 68.3%, range 58.0-73.3%, 5 sites

Stem density/ha avg. = 480, range 400-540, 3 sites

Dominant species (relative cover, frequency): Acacia cambagei (100, 100%)

Frequent species (cover, frequency): Acacia cambagei (59, 100%), Atalaya hemiglauca (40%), Denhamia oleaster (40%), Lysiphyllum carronii (40%), Acacia crombiei (20%), Archidendropsis basaltica (20%), Brachychiton australis (20%), Ehretia saligna (20%), Eremophila mitchellii (20%), Eucalyptus orgadophila (20%), Ficus opposita (20%), Gyrocarpus americanus (20%), Santalum lanceolatum (20%)

Stratum: T2

Height avg. = 4.5m, range 3-6m, 2 sites

Crown cover avg. = 1.1%, range 0.6-1.6%, 2 sites

Stem density/ha avg. = 100, 1 site

Dominant species (relative cover, frequency): Acacia cambagei (61, 40%)

Frequent species (cover, frequency): Acacia cambagei (2, 40%), Atalaya hemiglauca (6, 20%)

Dominant species: Relative cover (mean of cover of species / total cover of all species in that stratum for all values > zero) and frequency (percent of total sites) ordered by decreasing relative abundance. Up to five most dominant species with frequency > 20% listed for each stratum.

Frequent species: Cover (mean of all values > zero) and frequency (percent of total sites) of all species occurring in more than 5% of sites ordered by decreasing frequency. Ground layer species are listed as either graminoid or forb.

Naturalised species have an asterisk (*) after the name. indet. after listed name = indeterminate species or genus

Stratum: S1

Height avg. = 1.7m, range 1-2m, 5 sites

Crown cover avg. = 0.6%, range 0.0-1.6%, 5 sites

Stem density/ha avg. = 230, range 100-360, 2 sites

Dominant species (relative cover, frequency): Acacia cambagei (95, 40%), Turraea pubescens (18, 40%)

Frequent species (cover, frequency): Acacia cambagei (1, 40%), Turraea pubescens (40%), Acacia indet. (20%), Apophyllum anomalum (20%), Capparis mitchellii (20%), Denhamia oleaster (20%), Diospyros humilis (20%), Flueggea leucopyrus (20%), Gyrocarpus americanus (20%), Jasminum didymum (20%), Parsonsia lanceolata (20%), Psydrax oleifolia (20%), Santalum lanceolatum (20%), Solanum ellipticum (20%), Trema tomentosa var. viridis (20%)

Stratum: G

Height avg. = 0.4m, range 0.2-0.5m, 5 sites

PFC avg. = 20.8%, range 1-54%, 5 sites

Dominant species (relative cover, frequency): Sporobolus caroli (37, 80%), Pennisetum ciliare (15, 40%), Enneapogon indet. (10, 40%), Dipteracanthus australasicus (6, 40%), Achyranthes aspera (6, 40%)*

Frequent species (cover, frequency): GRAMINOIDS: Sporobolus caroli (15, 80%), Enneapogon indet. (2, 40%), Paspalidium criniforme (40%), Pennisetum ciliare (2, 40%), Acrachne racemosa (20%), Astrebla squarrosa (20%), Digitaria ctenantha (20%), Enneapogon lindleyanus (20%), Enneapogon robustissimus (20%), Iseilema indet. (20%), Panicum decompositum (20%), Panicum laevinode (20%), Sporobolus actinocladius (20%)*

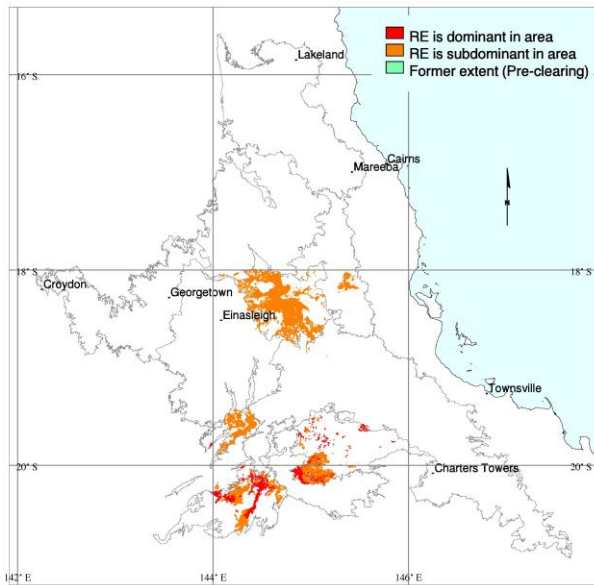
FORBS: Melhania oblongifolia (60%), Abutilon indet. (40%), Achyranthes aspera (40%), Amaranthus interruptus (40%), Angiosperm indet. (2, 40%), Dipteracanthus australasicus (40%), Euphorbia tannensis (40%), Ocimum indet. (1, 40%), Abutilon leucopetalum (20%), Abutilon nobile (20%), Abutilon oxycarpum (20%), Acacia cambagei (20%), Apophyllum anomalum (20%), Bidens pilosa (20%), Boerhavia dominii (20%), Canavalia papuana (20%), Cheilanthes sieberi (20%), Cleome viscosa (20%), Commelina lanceolata (20%), Crotalaria medicaginea (20%), Cucumis melo (20%), Cucumis melo subsp. agrestis (20%), Cucumis myriocarpus subsp. myriocarpus* (20%), Dipteracanthus australasicus subsp. australasicus (20%), Euphorbia tannensis subsp. eremophila (20%), Flueggea leucopyrus (20%), Geijera salicifolia (20%), Indigostrum parviflorum (20%), Ipomoea indet. (20%), Ipomoea indica* (20%), Ipomoea nil* (20%), Jasminum didymum (20%), Josephinia eugeniae (20%), Leptopus decaisnei (20%), Malvastrum americanum* (20%), Phyllanthus carpentariae (20%), Phyllanthus maderaspatensis (20%), Psydrax oleifolia (20%), Ptilotus remotiflorus (20%), Rostellularia adscendens (20%), Santalum lanceolatum (20%), Sarcostemma viminalis (20%), Secamone elliptica (20%), Solanum ellipticum (20%), Trichodesma zeylanicum var. zeylanicum (20%), Waltheria indica (20%)*

Dominant species: Relative cover (mean of cover of species / total cover of all species in that stratum for all values > zero) and frequency (percent of total sites) ordered by decreasing relative abundance. Up to five most dominant species with frequency > 20% listed for each stratum.

Frequent species: Cover (mean of all values > zero) and frequency (percent of total sites) of all species occurring in more than 5% of sites ordered by decreasing frequency. Ground layer species are listed as either graminoid or forb.

Naturalised species have an asterisk (*) after the name. indet. after listed name = indeterminate species or genus

Eucalyptus orgadophila +/- Corymbia spp. open-woodland on basalt plains and rocky basalt hills



M. Newton

Pre-clearing area (ha), remnant area (ha) and per cent remaining: 109,566 108,553 99%

Species recorded: Total: 98; woody: 24; ground: 77; Avg. spp./site: 14.8; std dev.: 6.7, 9 site(s)

Basal area: Avg./site: 3.3 m²/ha, range: 1.0 - 7 m²/ha, std. deviation: 3 m²/ha, 3 site(s)

Structural formation: Open-woodland: 70%; woodland: 30%, 10 site(s)

Representative sites: 25753, 25755, 25756, 25760, 25775, 25782, 25830, 26081, 26245, 26693.

Stratum: T1

Height avg. = 17.0m, range 14-18m, 10 sites

Crown cover avg. = 15.5%, range 4.4-44.4%, 10 sites

Stem density/ha avg. = 50, range 40-60, 2 sites

Dominant species (relative cover, frequency): Eucalyptus orgadophila (93, 100%), Corymbia erythrophloia (11, 30%), Eucalyptus crebra (9, 30%), Corymbia dallachiana (2, 40%)

Frequent species (cover, frequency): Eucalyptus orgadophila (14, 100%), Corymbia dallachiana (40%), Corymbia erythrophloia (1, 30%), Eucalyptus crebra (1, 30%), Brachychiton indet. (10%), Corymbia terminalis (10%), Cymbidium canaliculatum (10%), Eucalyptus camaldulensis (10%), Eucalyptus xanthoclada (1, 10%)

Stratum: T2

Height avg. = 5.8m, range 5-7m, 4 sites

Crown cover avg. = 0.7%, range 0.0-1.6%, 4 sites

Frequent species (cover, frequency): Melaleuca bracteata (20%), Acacia bidwillii (10%), Archidendropsis basaltica (1, 10%), Atalaya hemiglauc (10%), Corymbia erythrophloia (10%), Diospyros humilis (10%), Geijera salicifolia (10%), Hakea arborescens (10%), Hakea lorea subsp. lorea (10%)

Dominant species: Relative cover (mean of cover of species / total cover of all species in that stratum for all values > zero) and frequency (percent of total sites) ordered by decreasing relative abundance. Up to five most dominant species with frequency > 20% listed for each stratum.

Frequent species: Cover (mean of all values > zero) and frequency (percent of total sites) of all species occurring in more than 5% of sites ordered by decreasing frequency. Ground layer species are listed as either graminoid or forb.

Naturalised species have an asterisk (*) after the name. indet. after listed name = indeterminate species or genus

Stratum: S1

Height avg. = 1.9m, range 1-3m, 5 sites

Crown cover avg. = 1.6%, range 0.0-6.1%, 5 sites

Frequent species (cover, frequency): Grewia retusifolia (20%), Acacia farnesiana (1, 10%), Acacia indet. (10%), Amyema bifurcata (10%), Archidendropsis basaltica (1, 10%), Carissa lanceolata (10%), Corymbia erythrophloia (10%), Eucalyptus orgadophila (10%), Maytenus cunninghamii (10%), Melaleuca bracteata (10%), Pimelea simplex (10%)*

Stratum: G

Height avg. = 0.5m, range 0.3-0.8m, 9 sites

PFC avg. = 47.4%, range 10-100%, 9 sites

Dominant species (relative cover, frequency): Heteropogon contortus (47, 80%), Themeda triandra (22, 60%), Ophiuros exaltatus (19, 30%), Chrysopogon fallax (3, 40%), Dichanthium sericeum subsp. sericeum (2, 30%)

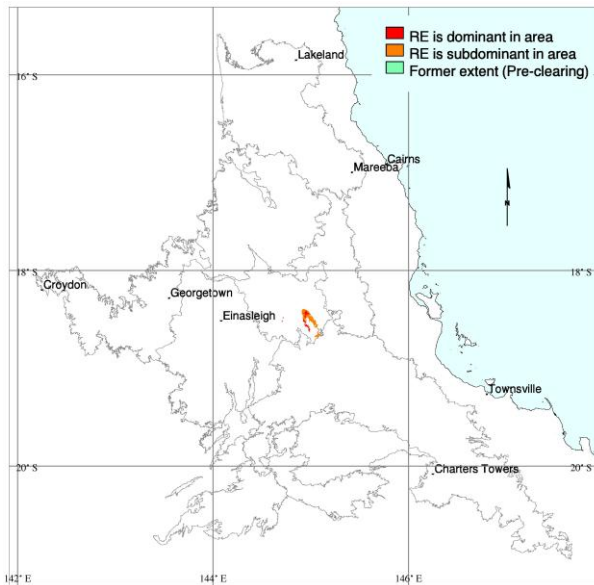
Frequent species (cover, frequency): GRAMINOIDS: Heteropogon contortus (24, 80%), Themeda triandra (4, 60%), Chrysopogon fallax (1, 40%), Aristida leptopoda (30%), Dichanthium sericeum subsp. sericeum (30%), Eulalia aurea (30%), Ophiuros exaltatus (5, 30%), Aristida latifolia (10%), Aristida psammophila (10%), Arundinella nepalensis (10%), Bothriochloa bladhii subsp. bladhii (10%), Bothriochloa ewartiana (5, 10%), Bothriochloa indet. (5, 10%), Brachyachne tenella (10%), Capillipedium spicigerum (10%), Chloris inflata (10%), Cyperus indet. (10%), Cyperus microcephalus subsp. microcephalus (10%), Cyperus pygmaeus (5, 10%), Dichanthium sericeum (2, 10%), Dichanthium sericeum subsp. humilius (5, 10%), Dichanthium tenue (10%), Enneapogon lindleyanus (10%), Eriochloa crebra (10%), Eriochloa indet. (10%), Heteropogon triticeus (10%), Leptochloa indet. (15, 10%), Mnesithea rottboellioides (2, 10%), Panicum robustum (10%), Poaceae indet. (10%), Scleria brownii (10%), Scleria indet. (2, 10%), Sehima nervosum (66, 10%), Sporobolus australasicus (10%), Sporobolus disjunctus (10%), Sporobolus indet. (2, 10%), Thellungia advena (10%), Themeda avenacea (10%), Tragus australianus (10%) FORBS: Crotalaria medicaginea (20%), Grewia retusifolia (20%), Acmea grandiflora var. brachyglossa (1, 10%), Alternanthera denticulata (10%), Amaranthus interruptus (10%), Basilicum polystachyon (10%), Breynea oblongifolia (10%), Brunoniella acaulis (10%), Brunoniella australis (10%), Calotis cuneifolia (10%), Canavalia papuana (10%), Commelina indet. (10%), Crotalaria indet. (10%), Cyathium cinereum (1, 10%), Dianella indet. (1, 10%), Euphorbia indet. (10%), Evolvulus alsinoides (10%), Galactia muelleri (10%), Glycine clandestina (10%), Glycine tabacina (10%), Hibiscus panduriformis (10%), Ipomoea eriocarpa (10%), Mecardonia procumbens* (10%), Myriophyllum verrucosum (10%), Polygonum plebeium (10%), Pterocaulon redolens (10%), Rhynchosia minima (1, 10%), Rostellularia adscendens (2, 10%), Ruellia tuberosa* (10%), Sida rhombifolia* (1, 10%), Sonchus indet. (10%), Tridax procumbens* (10%), Uraria lagopodioides (10%)*

Dominant species: Relative cover (mean of cover of species / total cover of all species in that stratum for all values > zero) and frequency (percent of total sites) ordered by decreasing relative abundance. Up to five most dominant species with frequency > 20% listed for each stratum.

Frequent species: Cover (mean of all values > zero) and frequency (percent of total sites) of all species occurring in more than 5% of sites ordered by decreasing frequency. Ground layer species are listed as either graminoid or forb.

Naturalised species have an asterisk (*) after the name. indet. after listed name = indeterminate species or genus

Eucalyptus tereticornis and Lophostemon suaveolens woodland +/- a shrubby understorey on rocky basalt flows



M. Newton

Pre-clearing area (ha), remnant area (ha) and per cent remaining: 4,381 4,380 100%

Species recorded: Total: 52; woody: 26; ground: 26; Avg. spp./site: 19.3; std dev.: 6.8, 3 site(s)

Basal area: Avg./site: 5.8 m²/ha, range: 4.0 - 10 m²/ha, std. deviation: 3 m²/ha, 3 site(s)

Structural formation: Woodland: 67%; open-woodland: 33%, 3 site(s)

Representative sites: 26097, 27113, 37312.

Stratum: T1

Height avg. = 17.7m, range 13-22m, 3 sites

Crown cover avg. = 29.6%, range 13.8-52.4%, 3 sites

Stem density/ha avg. = 60, range 40-80, 2 sites

Dominant species (relative cover, frequency): Eucalyptus tereticornis (100, 33%), Lophostemon suaveolens (96, 33%), Corymbia tessellaris (50, 67%), Eucalyptus camaldulensis (4, 33%)

Frequent species (cover, frequency): Corymbia tessellaris (11, 67%), Eucalyptus camaldulensis (1, 33%), Eucalyptus tereticornis (14, 33%), Lophostemon suaveolens (34, 33%)

Stratum: T2

Height avg. = 6.0m, range 5-8m, 3 sites

Crown cover avg. = 4.1%, range 0.0-11.8%, 3 sites

Stem density/ha avg. = 70, range 20-120, 2 sites

Dominant species (relative cover, frequency): Lophostemon suaveolens (61, 33%), Atalaya hemiglauca (58, 67%), Bursaria incana (38, 33%), Pittosporum spinescens (17, 33%), Pittosporum indet. (17, 33%)

Frequent species (cover, frequency): Atalaya hemiglauca (67%), Ficus opposita (67%), Bursaria incana (2, 33%), Corymbia tessellaris (33%), Eucalyptus camaldulensis (33%), Lophostemon suaveolens (4, 33%), Pittosporum indet. (33%), Pittosporum spinescens (33%)

Dominant species: Relative cover (mean of cover of species / total cover of all species in that stratum for all values > zero) and frequency (percent of total sites) ordered by decreasing relative abundance. Up to five most dominant species with frequency > 20% listed for each stratum.

Frequent species: Cover (mean of all values > zero) and frequency (percent of total sites) of all species occurring in more than 5% of sites ordered by decreasing frequency. Ground layer species are listed as either graminoid or forb.

Naturalised species have an asterisk (*) after the name. indet. after listed name = indeterminate species or genus

Stratum: S1

Height avg. = 1.8m, range 1.5-2.5m, 3 sites

Crown cover avg. = 8.2%, range 0.0-24.7%, 3 sites

Stem density/ha avg. = 260, range 160-360, 2 sites

Dominant species (relative cover, frequency): *Melia azedarach* (90, 33%), *Angiosperm indet.* (32, 33%), *Grevillea parallela* (28, 33%), *Hovea longipes* (28, 33%), *Petalostigma pubescens* (17, 33%)

Frequent species (cover, frequency): *Atalaya hemiglauc*a (67%), *Cupaniopsis anacardioides* (1, 67%), *Ficus opposita* (67%), *Mallotus philippensis* (67%), *Alchornea ilicifolia* (33%), *Angiosperm indet.* (33%), *Carissa ovata* (33%), *Clerodendrum indet.* (33%), *Corymbia tessellaris* (33%), *Diospyros humilis* (33%), *Drypetes deplanchei* (33%), *Exocarpos latifolius* (33%), *Grevillea parallela* (3, 33%), *Hovea longipes* (3, 33%), *Maytenus cunninghamii* (33%), *Melia azedarach* (1, 33%), *Petalostigma pubescens* (2, 33%), *Pipturus argenteus* (33%), *Pittosporum indet.* (33%), *Pleiogynium timorense* (33%), *Solanum indet.* (33%)

Stratum: G

Height avg. = 0.5m, range 0.2-0.8m, 3 sites

PFC avg. = 14.7%, range 2-32%, 3 sites

Dominant species (relative cover, frequency): *Vitaceae indet.* (87, 33%), *Psydrax odorata* (20, 33%), *Notelaea microcarpa* var. *microcarpa* (20, 33%), *Melhan*ia *oblongifolia* (20, 33%), *Lomandra longifolia* (20, 33%)

Frequent species (cover, frequency): GRAMINOIDS: *Arundinella indet.* (33%), *Bothriochloa pertusa** (33%), *Cymbopogon bombycinus* (33%), *Echinochloa indet.* (33%), *Fimbristylis indet.* (33%), *Heteropogon contortus* (33%), *Paspalidium indet.* (33%)

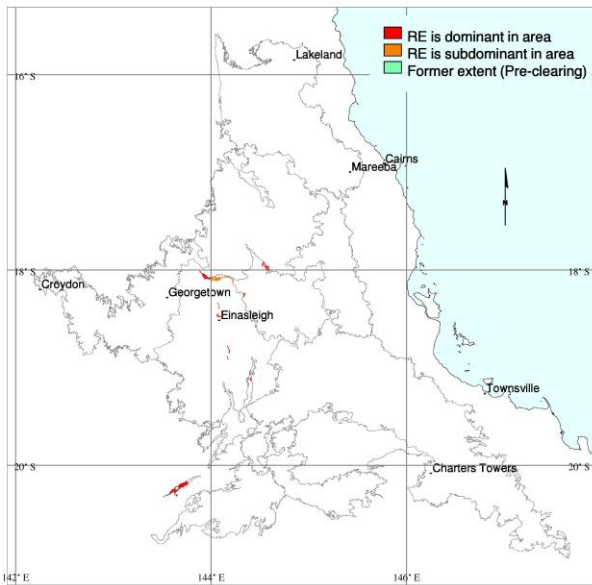
FORBS: *Achyranthes indet.* (33%), *Alternanthera pungens** (33%), *Asteraceae indet.* (33%), *Cayratia trifolia* (33%), *Dianella caerulea* var. *aquilonia* (33%), *Glycine indet.* (33%), *Grewia retusifolia* (33%), *Gymnanthera oblonga* (33%), *Hibiscus meraukensis* (33%), *Indigofera linnaei* (33%), *Ipomoea abrupta* (33%), *Lomandra longifolia* (33%), *Malvaceae indet.* (33%), *Melhan*ia *oblongifolia* (33%), *Notelaea microcarpa* var. *microcarpa* (33%), *Psydrax odorata* (33%), *Sida indet.* (33%), *Trichodesma zeylanicum* (33%), *Vitaceae indet.* (2, 33%)

Dominant species: Relative cover (mean of cover of species / total cover of all species in that stratum for all values > zero) and frequency (percent of total sites) ordered by decreasing relative abundance. Up to five most dominant species with frequency > 20% listed for each stratum.

Frequent species: Cover (mean of all values > zero) and frequency (percent of total sites) of all species occurring in more than 5% of sites ordered by decreasing frequency. Ground layer species are listed as either graminoid or forb.

Naturalised species have an asterisk (*) after the name. indet. after listed name = indeterminate species or genus

Eucalyptus microneura +/- Corymbia spp. +/- Terminalia spp. woodland on basalt plains



M. Newton

Pre-clearing area (ha), remnant area (ha) and per cent remaining: 15,494 15,469 100%

Species recorded: Total: 82; woody: 20; ground: 67; Avg. spp./site: 24.8; std dev.: 7.4, 4 site(s)

Basal area: Avg./site: 4.9 m²/ha, range: 4.5 - 6 m²/ha, std. deviation: 1 m²/ha, 4 site(s)

Structural formation: Woodland: 25%; open-woodland: 25%; low woodland: 25%; low open-woodland: 25%, 4 site(s)

Representative sites: 26302, 26522, 37344, 37345.

Stratum: T1

Height avg. = 9.5m, range 8-10m, 4 sites

Crown cover avg. = 16.0%, range 6.1-31.4%, 4 sites

Stem density/ha avg. = 85, range 60-100, 4 sites

Dominant species (relative cover, frequency): Eucalyptus microneura (84, 75%), Corymbia erythrophloia (52, 50%), Eucalyptus similis (44, 25%)

Frequent species (cover, frequency): Eucalyptus microneura (10, 75%), Corymbia dallachiana (50%), Corymbia erythrophloia (9, 50%), Brachychiton albidus (25%), Canaryum australianum (25%), Erythrophleum chlorostachys (25%), Eucalyptus similis (12, 25%), Terminalia aridicola (25%)

Stratum: T2

Height avg. = 4.0m, 1 site

Crown cover avg. = 7.9%, 1 site

Stem density/ha avg. = 40, 1 site

Dominant species (relative cover, frequency): Lysiphyllum hookeri (53, 25%), Melaleuca citrolens (47, 25%)

Frequent species (cover, frequency): Lysiphyllum hookeri (4, 25%), Melaleuca citrolens (3, 25%)

Dominant species: Relative cover (mean of cover of species / total cover of all species in that stratum for all values > zero) and frequency (percent of total sites) ordered by decreasing relative abundance. Up to five most dominant species with frequency > 20% listed for each stratum.

Frequent species: Cover (mean of all values > zero) and frequency (percent of total sites) of all species occurring in more than 5% of sites ordered by decreasing frequency. Ground layer species are listed as either graminoid or forb.

Naturalised species have an asterisk (*) after the name. indet. after listed name = indeterminate species or genus

Stratum: S1

Height avg. = 1.4m, range 1-1.5m, 4 sites

Crown cover avg. = 0.1%, range 0.0-0.6%, 4 sites

Stem density/ha avg. = 125, range 20-260, 4 sites

Dominant species (relative cover, frequency): *Carissa lanceolata* (67, 50%), *Planchonia careya* (50, 25%), *Indigofera pratensis* (50, 25%), *Maytenus cunninghamii* (26, 50%), *Terminalia aridicola* (25, 25%)

Frequent species (cover, frequency): *Carissa lanceolata* (50%), *Eucalyptus microneura* (50%), *Maytenus cunninghamii* (50%), *Acacia farnesiana** (25%), *Atalaya hemiglauc*a (25%), *Bursaria incana* (25%), *Erythroxylum ellipticum* (25%), *Grevillea parallela* (25%), *Hakea arborescens* (25%), *Indigofera pratensis* (25%), *Melaleuca citrolens* (25%), *Planchonia careya* (25%), *Terminalia aridicola* (25%)

Stratum: G

Height avg. = 0.6m, range 0.4-0.8m, 4 sites

PFC avg. = 57.5%, range 29-86%, 4 sites

Dominant species (relative cover, frequency): *Themeda quadrivalvis** (61, 25%), *Heteropogon contortus* (35, 100%), *Dichanthium indet.* (28, 25%), *Sarga plumosum* (27, 25%), *Eragrostis sterilis* (20, 25%)

Frequent species (cover, frequency): **GRAMINOIDS:** *Heteropogon contortus* (19, 100%), *Heteropogon triticeus* (50%), *Aristida indet.* (2, 25%), *Aristida sciuroides* (25%), *Bothriochloa pertusa** (2, 25%), *Brachyachne convergens* (1, 25%), *Capillipedium indet.* (25%), *Chrysopogon fallax* (5, 25%), *Chrysopogon indet.* (25%), *Cyperus fulvus* (12, 25%), *Dichanthium indet.* (7, 25%), *Dichanthium sericeum* (25%), *Digitaria indet.* (25%), *Enneapogon polyphyllus* (2, 25%), *Eragrostis exigua* (25%), *Eragrostis indet.* (25%), *Eragrostis sterilis* (17, 25%), *Eragrostis tenuifolia** (25%), *Eriachne ciliata* (25%), *Fimbristylis dichotoma* (12, 25%), *Melinis repens** (25%), *Mnesithea formosa* (25%), *Panicum effusum* (25%), *Panicum indet.* (25%), *Sarga plumosum* (18, 25%), *Scleria brownii* (2, 25%), *Scleria indet.* (2, 25%), *Themeda quadrivalvis** (18, 25%), *Themeda triandra* (3, 25%)

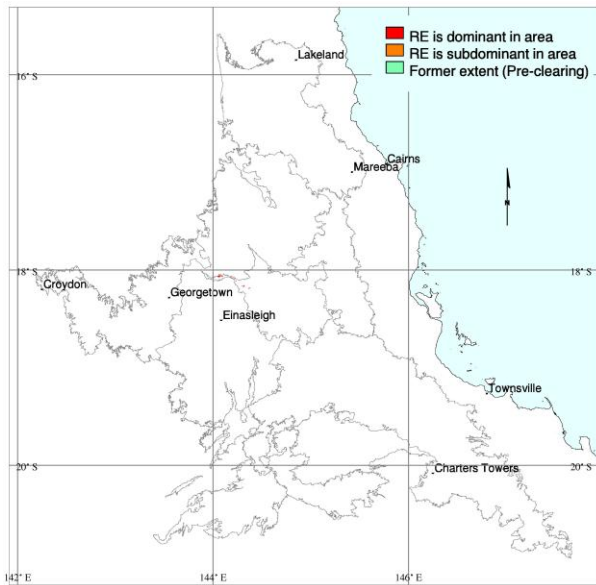
FORBS: *Grewia retusifolia* (75%), *Atalaya hemiglauc*a (50%), *Brunoniella australis* (50%), *Crotalaria novae-hollandiae* (50%), *Galactia indet.* (6, 50%), *Waltheria indica* (1, 50%), *Acanthospermum hispidum** (25%), *Achyranthes aspera* (2, 25%), *Alternanthera micrantha* (1, 25%), *Blumea saxatilis* (25%), *Cayratia trifolia* (25%), *Chamaecrista absus* (25%), *Crotalaria novae-hollandiae* subsp. *novae-hollandiae* (25%), *Desmodium brachypodum* (25%), *Eucalyptus microneura* (25%), *Evolvulus alsinoides* (25%), *Gomphrena celosioides** (25%), *Heliotropium tenuifolium* (25%), *Indigofera indet.* (25%), *Indigofera linifolia* (25%), *Indigofera pratensis* (2, 25%), *Malvaceae indet.* (1, 25%), *Malvastrum americanum* var. *americanum** (25%), *Margaritaria dubium-traceyi* (25%), *Polycarpaea indet.* (25%), *Pterocaulon redolens* (25%), *Sida acuta** (25%), *Sida cordifolia** (25%), *Sida spinosa** (25%), *Spermacoce baileyana* (25%), *Striga curviflora* (25%), *Stylosanthes humilis** (25%), *Stylosanthes scabra** (25%), *Tephrosia indet.* (25%), *Triumfetta pentandra** (25%), *Uraria lagopodioides* (3, 25%), *Vigna radiata* (25%), *Zornia stirlingii* (25%)

Dominant species: Relative cover (mean of cover of species / total cover of all species in that stratum for all values > zero) and frequency (percent of total sites) ordered by decreasing relative abundance. Up to five most dominant species with frequency > 20% listed for each stratum.

Frequent species: Cover (mean of all values > zero) and frequency (percent of total sites) of all species occurring in more than 5% of sites ordered by decreasing frequency. Ground layer species are listed as either graminoid or forb.

Naturalised species have an asterisk (*) after the name. indet. after listed name = indeterminate species or genus

Excoecaria parvifolia low open-woodland on cracking clays on rocky basalt plains



S.L. Thompson

Pre-clearing area (ha), remnant area (ha) and per cent remaining: 796 792 99%

Species recorded: Total: 16; woody: 5; ground: 11; Avg. spp./site: 9.0; std dev.: 1.0, 2 site(s)

Basal area: Avg./site: 2.5 m²/ha, range: 2.5 - 3 m²/ha, std. deviation: 0 m²/ha, 1 site(s)

Structural formation: Low open-woodland: 100%, 2 site(s)

Representative sites: 25971, 26521.

Stratum: T1

Height avg. = 5.5m, range 5-6m, 2 sites

Crown cover avg. = 6.4%, range 2.9-9.8%, 2 sites

Stem density/ha avg. = 100, range 80-120, 2 sites

Dominant species (relative cover, frequency): Excoecaria parvifolia (100, 100%), Atalaya hemiglauca (1, 50%)

Frequent species (cover, frequency): Excoecaria parvifolia (7, 100%), Atalaya hemiglauca (50%)

Stratum: T2

Height avg. = 3.0m, 1 site

Crown cover avg. = 1.6%, 1 site

Stem density/ha avg. = 180, 1 site

Dominant species (relative cover, frequency): Excoecaria parvifolia (99, 50%), Atalaya hemiglauca (1, 50%), Acacia victoriae subsp. victoriae (1, 50%)

Frequent species (cover, frequency): Acacia victoriae subsp. victoriae (50%), Atalaya hemiglauca (50%), Excoecaria parvifolia (3, 50%)

Dominant species: Relative cover (mean of cover of species / total cover of all species in that stratum for all values > zero) and frequency (percent of total sites) ordered by decreasing relative abundance. Up to five most dominant species with frequency > 20% listed for each stratum.

Frequent species: Cover (mean of all values > zero) and frequency (percent of total sites) of all species occurring in more than 5% of sites ordered by decreasing frequency. Ground layer species are listed as either graminoid or forb.

Naturalised species have an asterisk (*) after the name. indet. after listed name = indeterminate species or genus

Stratum: S1

Height avg. = 1.8m, range 1.5-2m, 2 sites

Crown cover avg. = 0.8%, range 0.0-1.6%, 2 sites

Stem density/ha avg. = 210, range 140-280, 2 sites

Dominant species (relative cover, frequency): Excoecaria parvifolia (66, 100%), Melaleuca bracteata (33, 50%), Cryptostegia grandiflora (17, 100%)*

Frequent species (cover, frequency): Cryptostegia grandiflora (100%), Excoecaria parvifolia (1, 100%), Melaleuca bracteata (50%)*

Stratum: G

Height avg. = 0.2m, range 0.1-0.2m, 2 sites

PFC avg. = 3.5%, range 0-7%, 2 sites

Dominant species (relative cover, frequency): Boerhavia indet. (75, 50%), Brachyachne convergens (16, 50%), Trichodesma zeylanicum (14, 50%), Polymeria indet. (14, 50%), Iseilema indet. (14, 50%)

Frequent species (cover, frequency): GRAMINOIDS: Brachyachne convergens (1, 50%), Chrysopogon indet. (50%), Cyperus indet. (50%), Eragrostis tenellula (1, 50%), Iseilema indet. (50%)

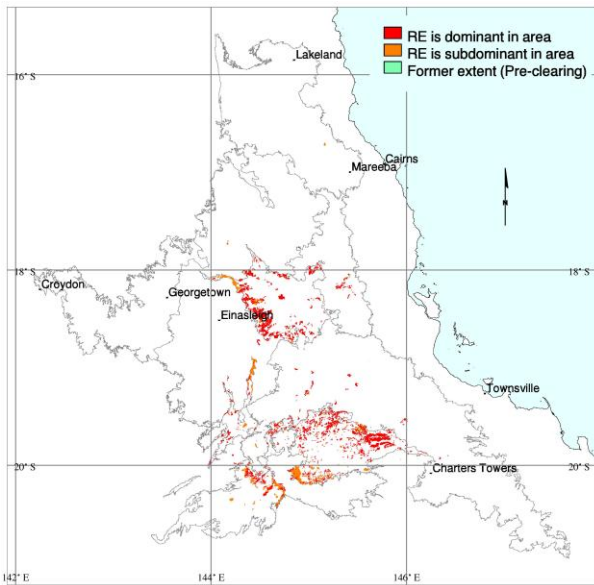
FORBS: Boerhavia indet. (6, 50%), Crotalaria indet. (50%), Hibiscus indet. (50%), Ipomoea polpha (50%), Polymeria indet. (50%), Trichodesma zeylanicum (50%)

Dominant species: Relative cover (mean of cover of species / total cover of all species in that stratum for all values > zero) and frequency (percent of total sites) ordered by decreasing relative abundance. Up to five most dominant species with frequency > 20% listed for each stratum.

Frequent species: Cover (mean of all values > zero) and frequency (percent of total sites) of all species occurring in more than 5% of sites ordered by decreasing frequency. Ground layer species are listed as either graminoid or forb.

Naturalised species have an asterisk (*) after the name. indet. after listed name = indeterminate species or genus

Iseilema spp. and/or Dichanthium spp. tussock grassland on basalt plains



C. Kahler

Pre-clearing area (ha), remnant area (ha) and per cent remaining: 168,924 166,155 98%

Species recorded: Total: 123; woody: 11; ground: 115; Avg. spp./site: 18.9; std dev.: 9.0, 9 site(s)

Basal area: Avg./site: 1.7 m²/ha, range: 1.0 - 3 m²/ha, std. deviation: 1 m²/ha, 6 site(s)

Structural formation: Tussock grassland: 90%; woodland: 10%, 10 site(s)

Representative sites: 25972, 26008, 26170, 26235, 26248, 26313, 26868, 26869, 26931, 26933.

Stratum: E

Height avg. = 8.8m, range 1.5-18m, 9 sites

Crown cover avg. = 3.1%, range 0.0-9.8%, 9 sites

Stem density/ha avg. = 60, range 20-120, 4 sites

Dominant species (relative cover, frequency): Eucalyptus crebra (44, 30%), Corymbia dallachiana (23, 60%)

Frequent species (cover, frequency): Corymbia dallachiana (60%), Eucalyptus crebra (30%), Corymbia erythrophloia (1, 20%), Acacia farnesiana (10%), Corymbia terminalis (5, 10%), Cymbidium canaliculatum (10%), Eucalyptus orgadophila (2, 10%), Eucalyptus platyphylla (10, 10%), Grewia retusifolia (10%), Sesbania cannabina (10%), Terminalia platyphylla (10%)*

Dominant species: Relative cover (mean of cover of species / total cover of all species in that stratum for all values > zero) and frequency (percent of total sites) ordered by decreasing relative abundance. Up to five most dominant species with frequency > 20% listed for each stratum.

Frequent species: Cover (mean of all values > zero) and frequency (percent of total sites) of all species occurring in more than 5% of sites ordered by decreasing frequency. Ground layer species are listed as either graminoid or forb.

Naturalised species have an asterisk (*) after the name. indet. after listed name = indeterminate species or genus

Stratum: G

Height avg. = 0.5m, range 0.2-0.9m, 9 sites

PFC avg. = 77.7%, range 40-100%, 9 sites

Dominant species (relative cover, frequency): *Dichanthium indet.* (29, 50%), *Heteropogon contortus* (19, 60%), *Ophiuros exaltatus* (14, 40%), *Aristida latifolia* (2, 30%), *Grewia retusifolia* (2, 40%)

Frequent species (cover, frequency): **GRAMINOIDS:** *Heteropogon contortus* (14, 60%), *Dichanthium indet.* (23, 50%), *Ophiuros exaltatus* (9, 40%), *Aristida latifolia* (2, 30%), *Bothriochloa decipiens* (20, 20%), *Cyperus indet.* (3, 20%), *Dichanthium aristatum** (12, 20%), *Eriochloa crebra* (20%), *Iseilema fragile* (4, 20%), *Iseilema indet.* (11, 20%), *Iseilema vaginiflorum* (66, 20%), *Paspalum indet.* (4, 20%), *Abildgaardia vaginata* (8, 10%), *Aristida leptopoda* (10%), *Arundinella nepalensis* (10%), *Bothriochloa ewartiana* (15, 10%), *Bothriochloa pertusa** (1, 10%), *Brachiaria indet.* (15, 10%), *Chloris virgata** (10%), *Cyperaceae indet.* (10%), *Cyperus gilesii* (10%), *Cyperus isabellinus* (10%), *Dichanthium annulatum** (10%), *Dichanthium fecundum* (3, 10%), *Dichanthium queenslandicum* (10%), *Dichanthium sericeum* (5, 10%), *Digitaria ciliaris** (1, 10%), *Digitaria indet.* (7, 10%), *Echinochloa colona** (10%), *Echinochloa indet.* (10%), *Eriochloa indet.* (2, 10%), *Eulalia aurea* (10%), *Fimbristylis indet.* (1, 10%), *Melinis repens** (10%), *Panicum decompositum* (10%), *Panicum indet.* (10%), *Panicum laevinode* (10%), *Panicum larcomianum* (10%), *Panicum queenslandicum* (10%), *Paspalidium indet.* (42, 10%), *Poaceae indet.* (40, 10%), *Rottboellia indet.* (10, 10%), *Schizachyrium pseudoulalia* (1, 10%), *Setaria indet.* (10%), *Sporobolus indet.* (10%), *Themeda avenacea* (10%)

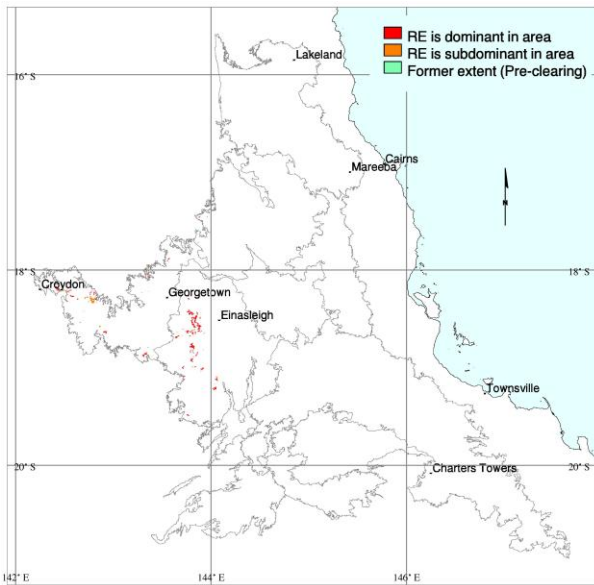
FORBS: *Grewia retusifolia* (1, 40%), *Rhynchosia minima* (1, 40%), *Rostellularia adscendens* (40%), *Trichodesma zeylanicum* (30%), *Boerhavia indet.* (12, 20%), *Crotalaria indet.* (20%), *Crotalaria montana* (20%), *Desmodium muelleri* (20%), *Fabaceae indet.* (20%), *Glycine tabacina* (20%), *Hibiscus trionum* (20%), *Indigofera linnaei* (20%), *Phyllanthus indet.* (20%), *Polymeria pusilla* (20%), *Acacia farnesiana** (10%), *Acanthospermum hispidum** (10%), *Alternanthera nana* (10%), *Alysicarpus muelleri* (1, 10%), *Angiosperm indet.* (10%), *Boerhavia dominii* (10%), *Bonamia indet.* (10%), *Centipeda racemosa* (10%), *Chamaesyce drummondii* (10%), *Chamaesyce indet.* (10%), *Chrysocephalum apiculatum* (10%), *Corchorus indet.* (8, 10%), *Crotalaria medicaginea* (10%), *Cryptostegia grandiflora** (10%), *Desmodium indet.* (1, 10%), *Eryngium plantagineum* (10%), *Euphorbiaceae indet.* (10%), *Evolvulus alsinoides* (10%), *Excoecaria parvifolia* (10%), *Galactia tenuiflora* (1, 10%), *Glycine latifolia* (1, 10%), *Goodenia indet.* (10%), *Haloragis heterophylla* (10%), *Ipomoea lonchophylla* (1, 10%), *Ipomoea polpha* (10%), *Ludwigia perennis* (10%), *Macroptilium lathyroides** (10%), *Marsilea indet.* (10%), *Marsilea mutica* (2, 10%), *Mimulus gracilis* (10%), *Phyllanthus lacerosus* (10%), *Polygala indet.* (10%), *Polymeria ambigua* (10%), *Polymeria indet.* (10%), *Senna barclayana* (10%), *Sida acuta** (10%), *Sida fibulifera* (1, 10%), *Sida indet.* (10%), *Sida trichopoda* (10%), *Stemodia glabella* (10%), *Striga curviflora* (10%), *Stylosanthes indet.* (10%), *Tephrosia flagellaris* (10%), *Tridax procumbens** (10%), *Uraria lagopodioides* (10%), *Verbena officinalis* (10%), *Vigna lanceolata var. lanceolata* (10%), *Vigna radiata* (5, 10%), *Vigna radiata var. sublobata* (10%), *Wedelia spilanthis* (10%), *Xanthium occidentale** (2, 10%), *Zornia muriculata* (10%)

Dominant species: Relative cover (mean of cover of species / total cover of all species in that stratum for all values > zero) and frequency (percent of total sites) ordered by decreasing relative abundance. Up to five most dominant species with frequency > 20% listed for each stratum.

Frequent species: Cover (mean of all values > zero) and frequency (percent of total sites) of all species occurring in more than 5% of sites ordered by decreasing frequency. Ground layer species are listed as either graminoid or forb.

Naturalised species have an asterisk (*) after the name. indet. after listed name = indeterminate species or genus

Eucalyptus chartaboma +/- E. tetradonta woodland on sandstone plateaus



K. McDonald

Pre-clearing area (ha), remnant area (ha) and per cent remaining: 13,773 13,725 100%

Species recorded: Total: 38; woody: 20; ground: 18; Avg. spp./site: 27.0; std dev.: 0.0, 1 site(s)

Basal area: Avg./site: 12.3 m²/ha, range: 11.5 - 13 m²/ha, std. deviation: 1 m²/ha, 2 site(s)

Structural formation: Woodland: 100%, 2 site(s)

Representative sites: 26718, 39426.

Stratum: T1

Height avg. = 14.0m, range 13-15m, 2 sites
 Crown cover avg. = 33.6%, range 29.2-38.0%, 2 sites
 Stem density/ha avg. = 160, 1 site

Dominant species (relative cover, frequency): Eucalyptus chartaboma (87, 50%), Eucalyptus tetradonta (53, 50%), Eucalyptus crebra (34, 50%), Corymbia polycarpa (13, 50%), Corymbia pocillum (9, 50%)

Frequent species (cover, frequency): Corymbia erythrophloia (50%), Corymbia peltata (50%), Corymbia pocillum (2, 50%), Corymbia polycarpa (4, 50%), Corymbia trachyphloia (50%), Eucalyptus chartaboma (21, 50%), Eucalyptus crebra (10, 50%), Eucalyptus similis (50%), Eucalyptus tetradonta (15, 50%), Eucalyptus whitei (1, 50%), Grevillea glauca (50%)

Stratum: T2

Height avg. = 7.0m, 1 site
 Crown cover avg. = 2.9%, 1 site

Dominant species (relative cover, frequency): Grevillea glauca (96, 50%), Eucalyptus chartaboma (2, 50%), Corymbia pocillum (2, 50%)

Frequent species (cover, frequency): Corymbia pocillum (50%), Eucalyptus chartaboma (50%), Grevillea glauca (1, 50%)

Dominant species: Relative cover (mean of cover of species / total cover of all species in that stratum for all values > zero) and frequency (percent of total sites) ordered by decreasing relative abundance. Up to five most dominant species with frequency > 20% listed for each stratum.

Frequent species: Cover (mean of all values > zero) and frequency (percent of total sites) of all species occurring in more than 5% of sites ordered by decreasing frequency. Ground layer species are listed as either graminoid or forb.

Naturalised species have an asterisk (*) after the name. indet. after listed name = indeterminate species or genus

Stratum: S1

Height avg. = 2.3m, range 1.5-3m, 2 sites

Crown cover avg. = 1.1%, range 0.6-1.6%, 2 sites

Stem density/ha avg. = 1160, 1 site

Dominant species (relative cover, frequency): Eucalyptus tetradonta (79, 50%), Xylomelum scottianum (65, 50%), Corymbia pocillum (24, 50%), Acacia julifera subsp. julifera (8, 50%), Persoonia falcata (3, 50%)

Frequent species (cover, frequency): Pogonolobus reticulatus (100%), Acacia julifera subsp. julifera (50%), Acacia longispicata (50%), Bossiaea armitii (50%), Corymbia pocillum (50%), Erythrophleum chlorostachys (50%), Eucalyptus chartaboma (50%), Eucalyptus crebra (50%), Eucalyptus tetradonta (1, 50%), Grevillea parallela (50%), Hovea parvicalyx (50%), Persoonia falcata (50%), Xylomelum scottianum (1, 50%)

Stratum: G

Height avg. = 0.5m, 1 site

PFC avg. = 31.0%, 1 site

Dominant species (relative cover, frequency): Aristida indet. (24, 50%), Panicum indet. (15, 50%), Cymbopogon indet. (12, 50%), Zornia muriculata (10, 50%), Indigofera indet. (6, 50%)

Frequent species (cover, frequency): GRAMINOIDS: Aristida indet. (8, 50%), Chrysopogon indet. (2, 50%), Cymbopogon indet. (4, 50%), Heteropogon triticeus (2, 50%), Melinis repens (50%), Panicum indet. (5, 50%), Schizachyrium indet. (2, 50%), Scleria indet. (50%), Themeda triandra (2, 50%)*

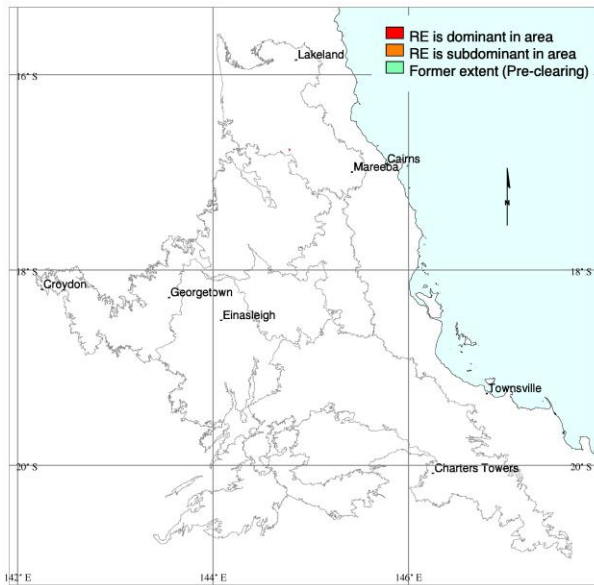
FORBS: Asteraceae indet. (50%), Brunoniella australis (1, 50%), Cajanus indet. (50%), Glycine indet. (1, 50%), Grewia retusifolia (50%), Indigofera indet. (2, 50%), Spermaceae indet. (50%), Zornia muriculata (3, 50%)

Dominant species: Relative cover (mean of cover of species / total cover of all species in that stratum for all values > zero) and frequency (percent of total sites) ordered by decreasing relative abundance. Up to five most dominant species with frequency > 20% listed for each stratum.

Frequent species: Cover (mean of all values > zero) and frequency (percent of total sites) of all species occurring in more than 5% of sites ordered by decreasing frequency. Ground layer species are listed as either graminoid or forb.

Naturalised species have an asterisk (*) after the name. indet. after listed name = indeterminate species or genus

Eucalyptus chartaboma +/- E. tetrodonta +/- Corymbia stockeri woodland on sandstone



G. W. Wilson

Pre-clearing area (ha), remnant area (ha) and per cent remaining: 249 249 100%

Species recorded: Total: 53; woody: 25; ground: 30; Avg. spp./site: 29.5; std dev.: 4.5, 2 site(s)

Basal area: Avg./site: 6.3 m²/ha, range: 6.0 - 7 m²/ha, std. deviation: 0 m²/ha, 2 site(s)

Structural formation: Woodland: 50%; open-forest: 50%, 2 site(s)

Representative sites: 26958, 26959.

Stratum: T1

Height avg. = 14.0m, range 12-16m, 2 sites

Crown cover avg. = 49.9%, range 33.7-66.2%, 2 sites

Stem density/ha avg. = 300, range 240-360, 2 sites

Dominant species (relative cover, frequency): Corymbia stockeri (63, 100%), Eucalyptus chartaboma (45, 50%), Acacia julifera subsp. gilbertensis (8, 100%), Petalostigma pubescens (7, 50%), Erythrophleum chlorostachys (3, 50%)

Frequent species (cover, frequency): Acacia julifera subsp. gilbertensis (3, 100%), Corymbia stockeri (18, 100%), Brachychiton diversifolius (50%), Callitris intratropica (50%), Erythrophleum chlorostachys (1, 50%), Eucalyptus chartaboma (24, 50%), Eucalyptus cullenii (50%), Grevillea glauca (50%), Grevillea parallela (50%), Petalostigma pubescens (4, 50%), Terminalia indet. (50%)

Stratum: S1

Height avg. = 3.0m, range 2-4m, 2 sites

Crown cover avg. = 9.3%, range 0.6-18.1%, 2 sites

Stem density/ha avg. = 1330, range 460-2200, 2 sites

Dominant species (relative cover, frequency): Petalostigma pubescens (51, 50%), Acacia julifera subsp. gilbertensis (27, 100%), Carissa lanceolata (7, 50%), Terminalia indet. (7, 50%), Planchonia careya (7, 50%)

Frequent species (cover, frequency): Acacia julifera subsp. gilbertensis (4, 100%), Alphitonia pomaderroides (100%), Corymbia stockeri (100%), Grevillea glauca (100%), Grevillea parallela (100%), Acacia humifusa (50%), Brachychiton diversifolius (50%), Callitris intratropica (50%), Canarium australicum (50%), Capparis indet. (50%), Carissa lanceolata (50%), Ehretia indet. (50%), Erythrophleum chlorostachys (50%), Eucalyptus chartaboma (50%), Eucalyptus cullenii (50%), Exocarpos latifolius (50%), Grevillea mimosoides (50%), Persoonia falcata (50%), Petalostigma banksii (50%), Petalostigma pubescens (8, 50%), Planchonia careya (50%), Premna acuminata (50%), Terminalia indet. (50%), Wrightia saligna (50%), Xylomelum scottianum (50%)

Dominant species: Relative cover (mean of cover of species / total cover of all species in that stratum for all values > zero) and frequency (percent of total sites) ordered by decreasing relative abundance. Up to five most dominant species with frequency > 20% listed for each stratum.

Frequent species: Cover (mean of all values > zero) and frequency (percent of total sites) of all species occurring in more than 5% of sites ordered by decreasing frequency. Ground layer species are listed as either graminoid or forb.

Naturalised species have an asterisk (*) after the name. indet. after listed name = indeterminate species or genus

Stratum: G

Height avg. = 0.3m, range 0.3-0.3m, 2 sites

PFC avg. = 20.5%, range 20-21%, 2 sites

Dominant species (relative cover, frequency): Scleria brownii (49, 50%), Aphyllodium biarticulatum (26, 50%), Schizachyrium fragile (23, 50%), Aristida perniciososa (19, 50%), Aristida indet. (14, 50%)

Frequent species (cover, frequency): GRAMINOIDS: Aristida indet. (3, 50%), Aristida ingrata (3, 50%), Aristida perniciososa (4, 50%), Arundinella setosa (1, 50%), Eriachne ciliata (50%), Eriachne glauca (50%), Heteropogon contortus (50%), Panicum effusum (50%), Panicum seminudum var. seminudum (1, 50%), Sarga plumosum (50%), Schizachyrium fragile (5, 50%), Schizachyrium indet. (50%), Scleria brownii (11, 50%), Setaria surgens (50%), Triodia bitextura (50%)

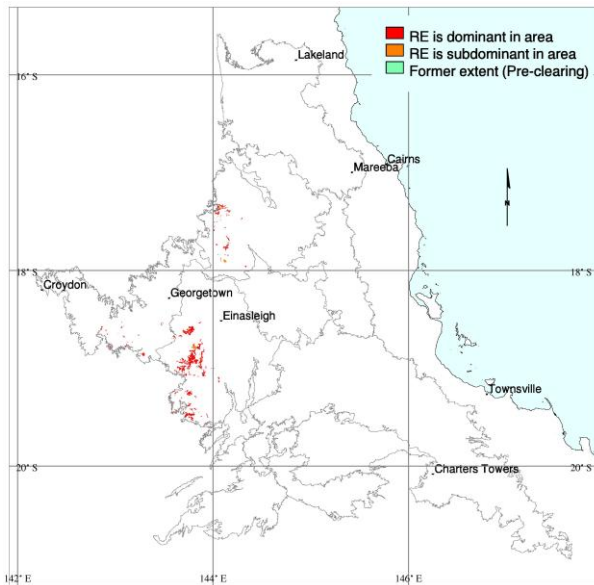
FORBS: Phyllanthus virgatus (100%), Acacia humifusa (1, 50%), Aphyllodium biarticulatum (6, 50%), Cartonema spicatum (50%), Distichostemon barklyanus (50%), Hibiscus meraukensis (50%), Hyptis suaveolens (1, 50%), Lomandra multiflora (1, 50%), Mitrasacme connata (50%), Petalostigma pubescens (1, 50%), Polycarpaea corymbosa (50%), Senna surattensis (50%), Tephrosia brachyodon (1, 50%), Tephrosia filipes (50%), Xanthorrhoea indet. (2, 50%)*

Dominant species: Relative cover (mean of cover of species / total cover of all species in that stratum for all values > zero) and frequency (percent of total sites) ordered by decreasing relative abundance. Up to five most dominant species with frequency > 20% listed for each stratum.

Frequent species: Cover (mean of all values > zero) and frequency (percent of total sites) of all species occurring in more than 5% of sites ordered by decreasing frequency. Ground layer species are listed as either graminoid or forb.

Naturalised species have an asterisk (*) after the name. indet. after listed name = indeterminate species or genus

Acacia shirleyi and/or Corymbia serendipita +/- Eucalyptus chartaboma woodland on sandstone scarps



Mark Newton

Pre-clearing area (ha), remnant area (ha) and per cent remaining: 34,298 34,200 100%

Species recorded: Total: 54; woody: 33; ground: 23; Avg. spp./site: 21.3; std dev.: 7.4, 3 site(s)

Basal area: Avg./site: 10.8 m²/ha, range: 5.5 - 17 m²/ha, std. deviation: 4 m²/ha, 4 site(s)

Structural formation: Woodland: 75%; open-forest: 25%, 4 site(s)

Representative sites: 26056, 26849, 26851, 39405.

Stratum: T1

Height avg. = 13.8m, range 12-15m, 4 sites

Crown cover avg. = 34.1%, range 15.9-59.7%, 4 sites

Stem density/ha avg. = 273, range 160-340, 3 sites

Dominant species (relative cover, frequency): Acacia shirleyi (78, 75%), Corymbia serendipita (33, 100%), Eucalyptus chartaboma (11, 75%)

Frequent species (cover, frequency): Corymbia serendipita (8, 100%), Acacia shirleyi (32, 75%), Eucalyptus chartaboma (3, 75%), Acacia julifera subsp. julifera (25%), Corymbia trachyphloia (25%), Erythrophleum chlorostachys (25%), Eucalyptus prosecta (25%), Eucalyptus similis (25%)

Stratum: T2

Height avg. = 7.0m, range 5-8m, 3 sites

Crown cover avg. = 18.2%, range 2.9-33.7%, 3 sites

Stem density/ha avg. = 140, range 120-160, 2 sites

Dominant species (relative cover, frequency): Acacia shirleyi (74, 50%), Acacia julifera subsp. julifera (42, 25%), Corymbia serendipita (34, 50%), Erythrophleum chlorostachys (26, 25%), Grevillea glauca (8, 50%)

Frequent species (cover, frequency): Acacia leptostachya (50%), Acacia shirleyi (18, 50%), Callitris intratropica (50%), Corymbia serendipita (2, 50%), Grevillea glauca (1, 50%), Acacia julifera (25%), Acacia julifera subsp. julifera (4, 25%), Alphitonia pomaderroides (25%), Erythrophleum chlorostachys (3, 25%), Eucalyptus chartaboma (25%)

Dominant species: Relative cover (mean of cover of species / total cover of all species in that stratum for all values > zero) and frequency (percent of total sites) ordered by decreasing relative abundance. Up to five most dominant species with frequency > 20% listed for each stratum.

Frequent species: Cover (mean of all values > zero) and frequency (percent of total sites) of all species occurring in more than 5% of sites ordered by decreasing frequency. Ground layer species are listed as either graminoid or forb.

Naturalised species have an asterisk (*) after the name. indet. after listed name = indeterminate species or genus

Stratum: S1

Height avg. = 2.4m, range 1.2-3m, 4 sites

Crown cover avg. = 2.7%, range 1.6-4.4%, 4 sites

Stem density/ha avg. = 4413, range 280-7000, 3 sites

Dominant species (relative cover, frequency): *Grevillea decora* (99, 25%), *Acacia shirleyi* (67, 50%), *Erythrophleum chlorostachys* (45, 25%), *Trachymene bivestita* var. *bivestita* (27, 25%), *Eucalyptus chartaboma* (23, 50%)

Frequent species (cover, frequency): *Persoonia falcata* (75%), *Petalostigma banksii* (75%), *Acacia shirleyi* (3, 50%), *Corymbia serendipita* (50%), *Eucalyptus chartaboma* (50%), *Acacia julifera* subsp. *gilbertensis* (25%), *Acacia julifera* subsp. *julifera* (25%), *Acacia multisiliqua* (25%), *Alphitonia pomaderroides* (25%), *Alphitonia* sp. (*Selwyn Ranges L.P.Conroy* 3) (25%), *Boronia bowmanii* (1, 25%), *Callitris intratropica* (25%), *Distichostemon dodecandrus* (25%), *Erythrophleum chlorostachys* (1, 25%), *Gardenia vilhelmii* (25%), *Grevillea decora* (2, 25%), *Grevillea decora* subsp. *decora* (25%), *Grevillea glauca* (25%), *Hibbertia lepidota* (1, 25%), *Hovea* indet. (25%), *Jacksonia vernicosa* (25%), *Lamprolobium fruticosum* (25%), *Larsenaikia ochreatea* (25%), *Pogonolobus reticulatus* (25%), *Sida* indet. (25%), *Trachymene bivestita* var. *bivestita* (2, 25%)

Stratum: S2

Height avg. = 1.5m, 1 site

Crown cover avg. = 15.9%, 1 site

Dominant species (relative cover, frequency): *Boronia bowmanii* (100, 25%)

Frequent species (cover, frequency): *Acacia leptostachya* (25%), *Boronia bowmanii* (16, 25%), *Hibbertia* indet. (25%), *Labichea nitida* (25%)

Stratum: G

Height avg. = 0.4m, range 0.3-0.5m, 3 sites

PFC avg. = 24.3%, range 15-33%, 3 sites

Dominant species (relative cover, frequency): *Rhynchospora* indet. (39, 25%), *Cleistochloa* indet. (38, 50%), *Eriachne* indet. (32, 25%), *Digitaria* indet. (26, 25%), *Panicum* indet. (23, 25%)

Frequent species (cover, frequency): **GRAMINOIDS:** *Aristida* indet. (5, 75%), *Cleistochloa* indet. (12, 50%), *Cleistochloa subjuncea* (3, 25%), *Digitaria* indet. (4, 25%), *Eragrostis* indet. (25%), *Eriachne* indet. (5, 25%), *Fimbristylis* indet. (25%), *Panicum* indet. (6, 25%), *Rhynchospora* indet. (13, 25%), *Schizachyrium fragile* (3, 25%), *Schizachyrium* indet. (1, 25%), *Setaria* indet. (25%)

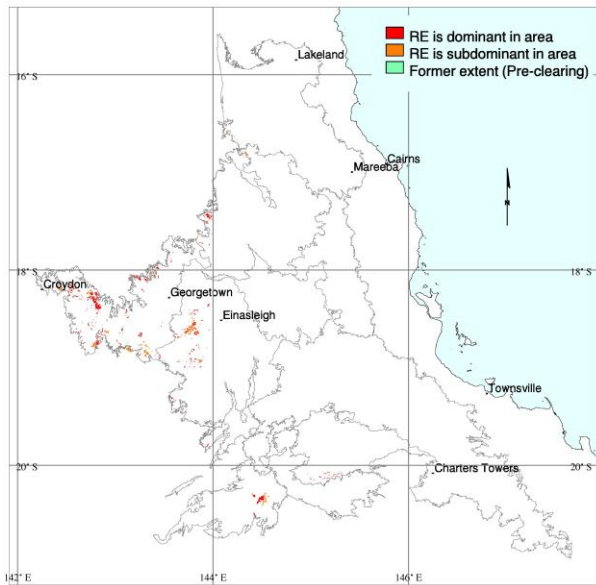
FORBS: *Asclepiadaceae* indet. (25%), *Crotalaria* indet. (25%), *Evolvulus alsinoides* (25%), *Fabaceae* indet. (25%), *Hibiscus meraukensis* (25%), *Hovea* indet. (25%), *Indigofera* indet. (25%), *Lomandra* indet. (25%), *Sida* indet. (25%), *Spermacoce* indet. (25%), *Tephrosia* indet. (25%)

Dominant species: Relative cover (mean of cover of species / total cover of all species in that stratum for all values > zero) and frequency (percent of total sites) ordered by decreasing relative abundance. Up to five most dominant species with frequency > 20% listed for each stratum.

Frequent species: Cover (mean of all values > zero) and frequency (percent of total sites) of all species occurring in more than 5% of sites ordered by decreasing frequency. Ground layer species are listed as either graminoid or forb.

Naturalised species have an asterisk (*) after the name. indet. after listed name = indeterminate species or genus

Acacia shirleyi +/- Corymbia spp. woodland on sandstone scarps



Mark Newton

Pre-clearing area (ha), remnant area (ha) and per cent remaining: 27,751 27,684 100%

Species recorded: Total: 22; woody: 15; ground: 8; Avg. spp./site: 11.5; std dev.: 6.5, 2 site(s)

Basal area: Avg./site: 5.5 m²/ha, range: 5.0 - 6 m²/ha, std. deviation: 1 m²/ha, 2 site(s)

Structural formation: Woodland: 50%; low woodland: 50%, 2 site(s)

Representative sites: 25786, 37386.

Stratum: E

Height avg. = 15.0m, 1 site

Crown cover avg. = 0.6%, 1 site

Dominant species (relative cover, frequency): Corymbia serendipita (97, 50%), Eucalyptus crebra (3, 50%)

Frequent species (cover, frequency): Corymbia serendipita (1, 50%), Eucalyptus crebra (50%)

Stratum: T1

Height avg. = 9.0m, range 8-10m, 2 sites

Crown cover avg. = 44.3%, range 38.0-50.5%, 2 sites

Stem density/ha avg. = 1860, 1 site

Dominant species (relative cover, frequency): Acacia shirleyi (93, 100%), Acacia burdekensis (14, 50%)

Frequent species (cover, frequency): Acacia shirleyi (38, 100%), Acacia burdekensis (6, 50%), Acacia julifera (50%), Callitris intratropica (50%), Corymbia gilbertensis (50%), Corymbia pocillum (50%), Eucalyptus crebra (50%)

Dominant species: Relative cover (mean of cover of species / total cover of all species in that stratum for all values > zero) and frequency (percent of total sites) ordered by decreasing relative abundance. Up to five most dominant species with frequency > 20% listed for each stratum.

Frequent species: Cover (mean of all values > zero) and frequency (percent of total sites) of all species occurring in more than 5% of sites ordered by decreasing frequency. Ground layer species are listed as either graminoid or forb.

Naturalised species have an asterisk (*) after the name. indet. after listed name = indeterminate species or genus

Stratum: T2

Height avg. = 4.0m, 1 site

Crown cover avg. = 0.6%, 1 site

Stem density/ha avg. = 440, 1 site

Dominant species (relative cover, frequency): *Petalostigma banksii* (53, 50%), *Alphitonia excelsa* (40, 50%), *Larsenaikia ochreata* (1, 50%), *Corymbia pocillum* (1, 50%), *Callitris intratropica* (1, 50%)

Frequent species (cover, frequency): *Acacia burdekensis* (50%), *Acacia shirleyi* (50%), *Alphitonia excelsa* (1, 50%), *Callitris intratropica* (50%), *Corymbia pocillum* (50%), *Larsenaikia ochreata* (50%), *Petalostigma banksii* (1, 50%)

Stratum: S1

Height avg. = 1.0m, 1 site

Crown cover avg. = 0.6%, 1 site

Stem density/ha avg. = 280, 1 site

Dominant species (relative cover, frequency): *Pogonolobus reticulatus* (13, 50%), *Petalostigma banksii* (13, 50%), *Persoonia falcata* (13, 50%), *Maytenus cunninghamii* (13, 50%), *Gardenia villhelmii* (13, 50%)

Frequent species (cover, frequency): *Acacia burdekensis* (50%), *Acacia shirleyi* (50%), *Callitris intratropica* (50%), *Gardenia villhelmii* (50%), *Maytenus cunninghamii* (50%), *Persoonia falcata* (50%), *Petalostigma banksii* (50%), *Pogonolobus reticulatus* (50%)

Stratum: G

Height avg. = 0.4m, range 0.3-0.4m, 2 sites

PFC avg. = 33.5%, range 20-47%, 2 sites

Dominant species (relative cover, frequency): *Triodia pungens* (100, 50%), *Scleria sphacelata* (59, 50%), *Cleistochloa subjuncea* (32, 50%), *Aristida queenslandica* var. *queenslandica* (4, 50%), *Aristida burraensis* (4, 50%)

Frequent species (cover, frequency): **GRAMINOIDS:** *Aristida burraensis* (2, 50%), *Aristida holathera* (50%), *Aristida queenslandica* var. *queenslandica* (2, 50%), *Cleistochloa subjuncea* (16, 50%), *Digitaria indet.* (50%), *Eriachne obtusa* (50%), *Scleria sphacelata* (29, 50%), *Triodia pungens* (20, 50%)

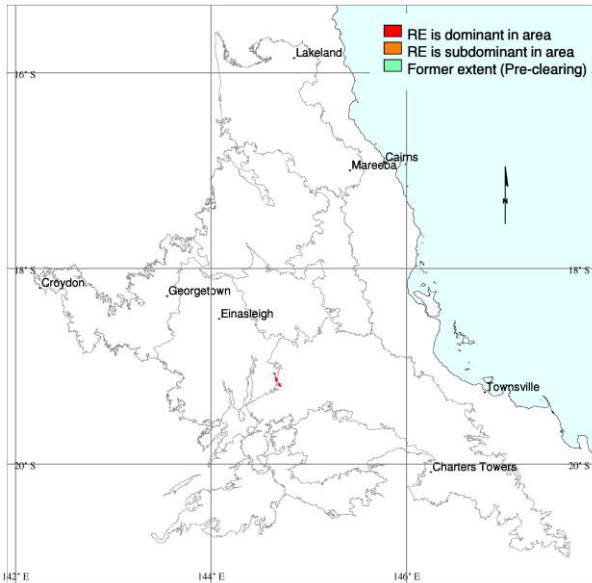
FORBS:

Dominant species: Relative cover (mean of cover of species / total cover of all species in that stratum for all values > zero) and frequency (percent of total sites) ordered by decreasing relative abundance. Up to five most dominant species with frequency > 20% listed for each stratum.

Frequent species: Cover (mean of all values > zero) and frequency (percent of total sites) of all species occurring in more than 5% of sites ordered by decreasing frequency. Ground layer species are listed as either graminoid or forb.

Naturalised species have an asterisk (*) after the name. indet. after listed name = indeterminate species or genus

Corymbia trachyphloia and/or Eucalyptus exilipes woodland on remnant sandstone sheets overlying mountain ranges



M. Newton

Pre-clearing area (ha), remnant area (ha) and per cent remaining: 2,269 2,269 100%

Species recorded: Total: 26; woody: 19; ground: 7; Avg. spp./site: 16.0; std dev.: 2.0, 2 site(s)

Basal area: Avg./site: 7.5 m²/ha, range: 7.5 - 8 m²/ha, std. deviation: 0 m²/ha, 2 site(s)

Structural formation: Woodland: 50%; open-forest: 50%, 2 site(s)

Representative sites: 26918, 39387.

Stratum: E

Height avg. = 17.0m, 1 site

Crown cover avg. = 9.8%, 1 site

Dominant species (relative cover, frequency): Eucalyptus exilipes (50, 50%), Corymbia trachyphloia (50, 50%)

Frequent species (cover, frequency): Corymbia trachyphloia (4, 50%), Eucalyptus exilipes (4, 50%)

Stratum: T1

Height avg. = 10.0m, range 10-10m, 2 sites

Crown cover avg. = 51.2%, range 44.4-58.0%, 2 sites

Stem density/ha avg. = 620, 1 site

Dominant species (relative cover, frequency): Acacia indet. (65, 50%), Corymbia trachyphloia (35, 100%), Acacia shirleyi (26, 100%), Eucalyptus exilipes (6, 100%)

Frequent species (cover, frequency): Acacia shirleyi (14, 100%), Corymbia trachyphloia (17, 100%), Eucalyptus exilipes (2, 100%), Acacia indet. (23, 50%)

Dominant species: Relative cover (mean of cover of species / total cover of all species in that stratum for all values > zero) and frequency (percent of total sites) ordered by decreasing relative abundance. Up to five most dominant species with frequency > 20% listed for each stratum.

Frequent species: Cover (mean of all values > zero) and frequency (percent of total sites) of all species occurring in more than 5% of sites ordered by decreasing frequency. Ground layer species are listed as either graminoid or forb.

Naturalised species have an asterisk (*) after the name. indet. after listed name = indeterminate species or genus

Stratum: T2

Height avg. = 5.0m, 1 site

Crown cover avg. = 2.9%, 1 site

Stem density/ha avg. = 140, 1 site

Dominant species (relative cover, frequency): *Acacia indet.* (99, 50%), *Angiosperm indet.* (1, 50%)

Frequent species (cover, frequency): *Acacia indet.* (3, 50%), *Angiosperm indet.* (50%)

Stratum: S1

Height avg. = 1.8m, range 1.5-2m, 2 sites

Crown cover avg. = 13.8%, range 0.6-27.0%, 2 sites

Stem density/ha avg. = 660, 1 site

Dominant species (relative cover, frequency): *Petalostigma banksii* (42, 100%), *Acacia indet.* (39, 50%), *Labichea rupestris* (32, 50%), *Canthium indet.* (8, 50%), *Persoonia falcata* (7, 100%)

Frequent species (cover, frequency): *Persoonia falcata* (100%), *Petalostigma banksii* (6, 100%), *Acacia indet.* (50%), *Acacia multisiliqua* (50%), *Acacia shirleyi* (50%), *Alphitonia excelsa* (50%), *Calytrix indet.* (50%), *Canthium indet.* (50%), *Capparis indet.* (50%), *Hakea indet.* (50%), *Labichea rupestris* (6, 50%), *Larsenaikia ochreata* (50%), *Lithomyrtus indet.* (50%), *Lithomyrtus microphylla* (1, 50%), *Pogonolobus reticulatus* (50%), *Psydrax saligna forma saligna* (50%)

Stratum: G

Height avg. = 0.5m, range 0.4-0.5m, 2 sites

PFC avg. = 52.0%, range 39-65%, 2 sites

Dominant species (relative cover, frequency): *Cleistochloa subjuncea* (58, 100%), *Scleria sphacelata* (25, 50%), *Schoenus indet.* (25, 50%), *Cassyltha filiformis* (25, 50%), *Poaceae indet.* (8, 50%)

Frequent species (cover, frequency): **GRAMINOIDS:** *Cleistochloa subjuncea* (18, 100%), *Aristida indet.* (50%), *Poaceae indet.* (3, 50%), *Schoenus indet.* (50%), *Scleria sphacelata* (50%)

FORBS: *Cajanus indet.* (50%), *Cassyltha filiformis* (50%)

Dominant species: Relative cover (mean of cover of species / total cover of all species in that stratum for all values > zero) and frequency (percent of total sites) ordered by decreasing relative abundance. Up to five most dominant species with frequency > 20% listed for each stratum.

Frequent species: Cover (mean of all values > zero) and frequency (percent of total sites) of all species occurring in more than 5% of sites ordered by decreasing frequency. Ground layer species are listed as either graminoid or forb.

Naturalised species have an asterisk (*) after the name. indet. after listed name = indeterminate species or genus