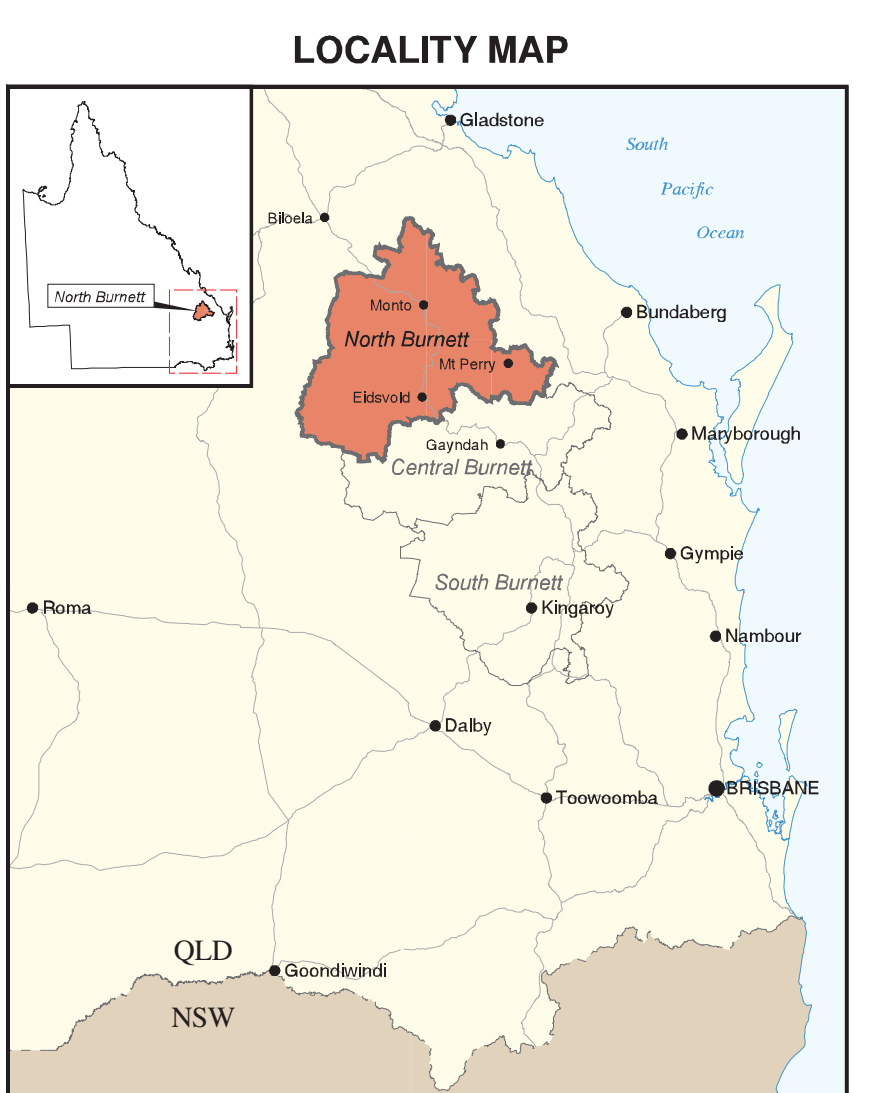


MAP CODE		LAND SYSTEM	LANDFORMS AND GEOLOGY	DOMINANT VEGETATION	MAJOR SOILS
<b>Alfalf Systems</b>					
Tm	Tim Moon	Level gently undulating plains of quartzite, granite, brown and grey iron cracking clay and red ironstone.	Eucalypt woodland.	Deep, black and grey, cracking clay (Vertosols) and black, brown and grey iron cracking clay and gradational soils (Dermosols).	Vertosols and Dermosols.
<b>Deeply Weathered, Sediments and Basic Volcanic Rocks</b>					
M1	Mulga	Plain or a plateau with low hills in the north, deep weathered, deeply weathered and/or weathered tertiary sediments.	Eucalypt woodland.	Deep, red, gradational soils and non-cracking clay (Vertosols).	Vertosols and Dermosols.
<b>Basic and Intermediate, Intrusive and Extrusive Igneous Rocks</b>					
M1	Murton 1	Undulating rises on the Murton Volcanics.	Reginae open forest.	Shallow to deep, red, brown, grey, and black, cracking clay (Vertosols), and red ironstone, gradational soils and non-cracking clay (Dermosols).	Vertosols and Dermosols.
<b>Acid Intrusive Rocks</b>					
M1	Murton 1	Undulating rises on the Murton Volcanics.	Reginae open forest.	Shallow to deep, red, brown, grey, and black, cracking clay (Vertosols), and red ironstone, gradational soils and non-cracking clay (Dermosols).	Vertosols and Dermosols.
<b>Sedimentary Rocks</b>					
E1	Evergreen 1	Undulating rises on the Evergreen Formation.	Shrubland.	Shallow to deep, red, brown, grey, and black, cracking clay (Vertosols), and red ironstone, gradational soils and non-cracking clay (Dermosols).	Vertosols and Dermosols.
<b>Metamorphic Rocks</b>					
G1	Goodnight 1	Undulating rises on the Goodnight Group.	Eucalypt woodland.	Shallow to deep, red, brown, grey, and black, cracking clay (Vertosols), and red ironstone, gradational soils and non-cracking clay (Dermosols).	Vertosols and Dermosols.



# LAND SYSTEMS OF NORTH BURNETT

SCALE 1 : 250 000



UNIVERSAL TRANSVERSE MERCATOR PROJECTION  
 GREY NUMBERED GRID LINES ARE 2000 METER INTERVALS ON THE AUSTRALIAN MAP GRID, ZONE 56

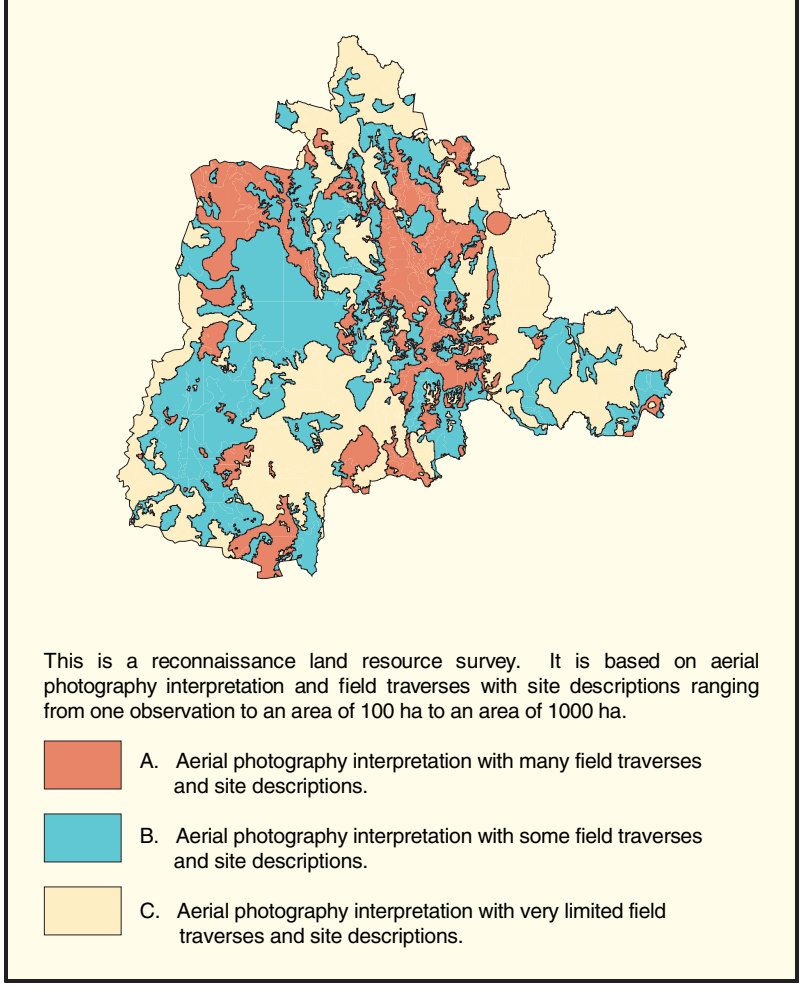
SURVEY BY T.E. Donnellan and R.D. Searle, Resource Management, Department of Natural Resources, Brisbane and B.E. Vandenberg, Resource Management, Department of Natural Resources, Brisbane.

CARTOGRAPHY BY G.J. Finney, Resource Sciences Centre, Department of Natural Resources, Brisbane.

BASE MAP compiled from the Digital Cadastral Data Base, Department of Natural Resources, Brisbane.



## RELIABILITY DIAGRAM



**DISCLAIMER:**  
 While every care is taken to ensure the accuracy of this product, the Department of Natural Resources and Mines makes no representations or warranties about its accuracy, reliability, completeness or suitability for any particular purpose and disclaims all responsibility and liability (including without limitation, liability in negligence) for all expenses, losses, damages (including indirect or consequential damage) and costs which may be incurred as a result of the product being inaccurate or incomplete in any way for any reason.