



SUITABILITY FOR VEGETABLE CROPS
GAVIAL - GRACEMERE AREA, FITZROY SHIRE

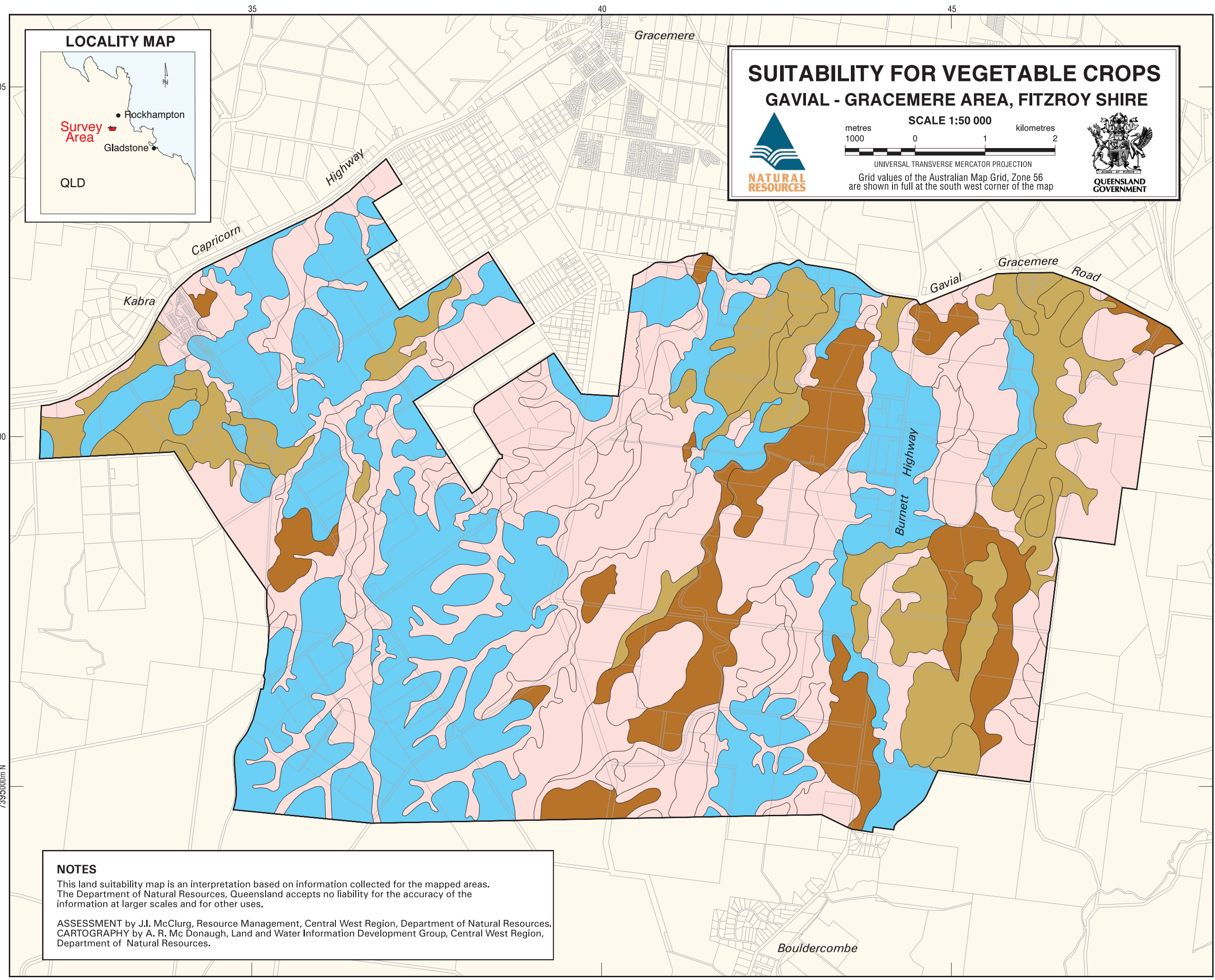
NATURAL RESOURCES

SCALE 1:50 000

metres 1000 0 1 2 kilometres

UNIVERSAL TRANSVERSE MERCATOR PROJECTION
Grid values of the Australian Map Grid, Zone 56 are shown in full at the south west corner of the map

QUEENSLAND GOVERNMENT



REFERENCE

Code	Class	Land Suitability
Blue	Class 3	Land with moderate limitations suitable for capsicum, cucurbits and tomato
Brown	Class 4	Land with severe limitations marginal for capsicum, cucurbits and tomato
Tan	Class 4	Land with severe limitations marginal for cucurbits (pumpkin and watermelon) only
Pink	Class 5	Land unsuitable for vegetable crops

NOTES

This land suitability map is an interpretation based on information collected for the mapped areas. The Department of Natural Resources, Queensland accepts no liability for the accuracy of the information at larger scales and for other uses.

ASSESSMENT by J.I. McClurg, Resource Management, Central West Region, Department of Natural Resources.
CARTOGRAPHY by A. R. Mc Donough, Land and Water Information Development Group, Central West Region, Department of Natural Resources.

DISCLAIMER: While every care is taken to ensure the accuracy of this product, the Department of Natural Resources and Mines makes no representations or warranties about its accuracy, reliability, completeness or suitability for any particular purpose and disclaims all responsibility and all liability (including without limitation, liability in negligence) for all expenses, losses, damages (including indirect or consequential damage) and costs which you might incur as a result of the product being inaccurate or incomplete in any way for any reason.

/r11/nrc/urpro/gracemere/maps/veg.aml