

LANDUSE OF KOLAN SHIRE

SCALE 1:100,000



NUMBERED GRID LINES ARE 10000 METRE INTERVALS OF THE MAP GRID OF AUSTRALIA, ZONE 56, GDA94
UNIVERSAL TRANSVERSE MERCATOR PROJECTION



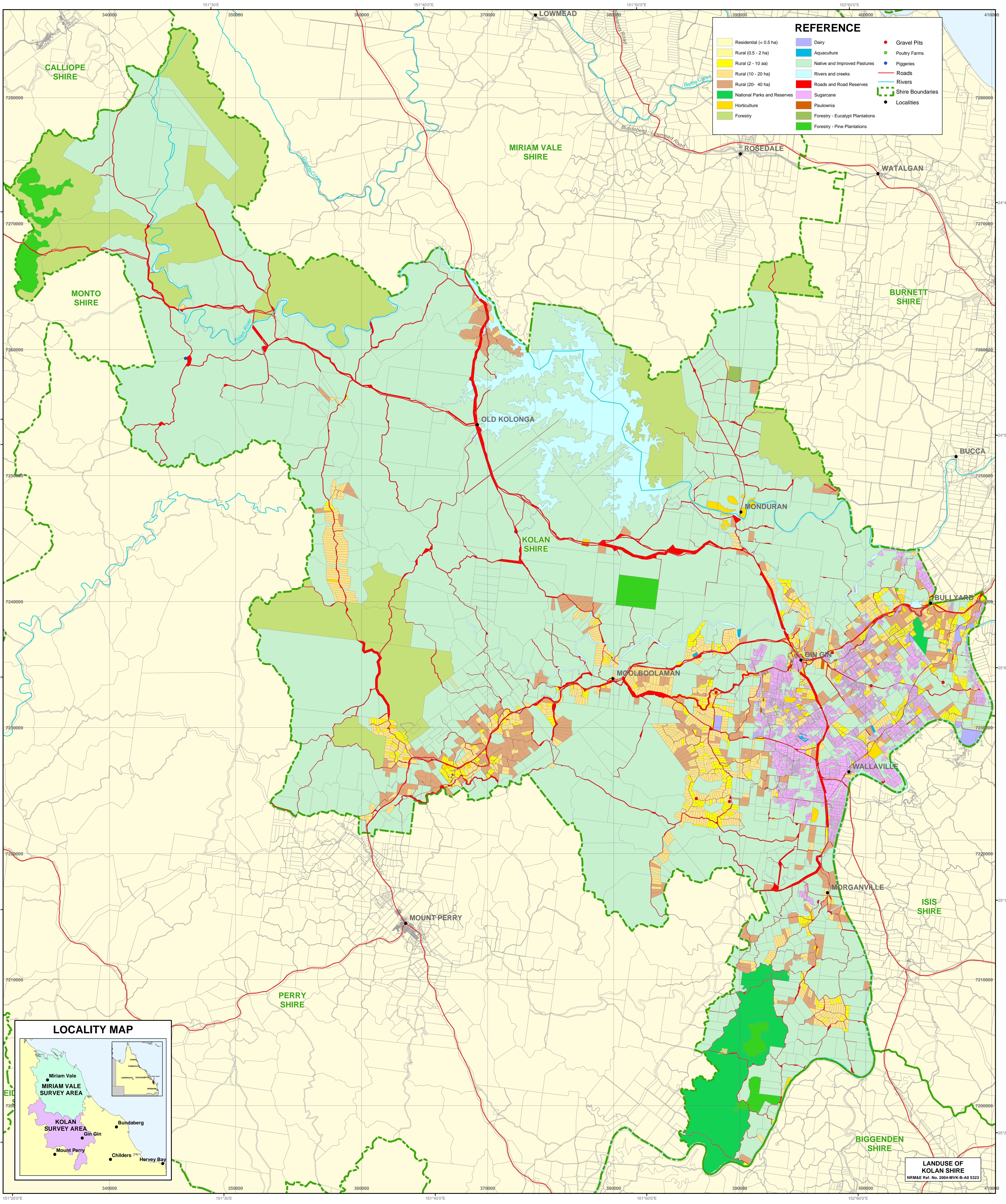
METHODOLOGY
The information shown on this map has been derived from industry bodies and government sources with limited ground observations. The data was collected between 1999 and 2000.

DISCLAIMER
While every care is taken to ensure the accuracy of this product, the Department of Natural Resources, Mines and Energy makes no representations or warranties about its accuracy, reliability, completeness or suitability for any particular purpose and disclaims all responsibility and all liability (including without limitation, liability in negligence) for all expenses, losses, damages (including indirect or consequential damage) and costs which you might incur as a result of its product being inaccurate or incomplete in any way and for any reason.

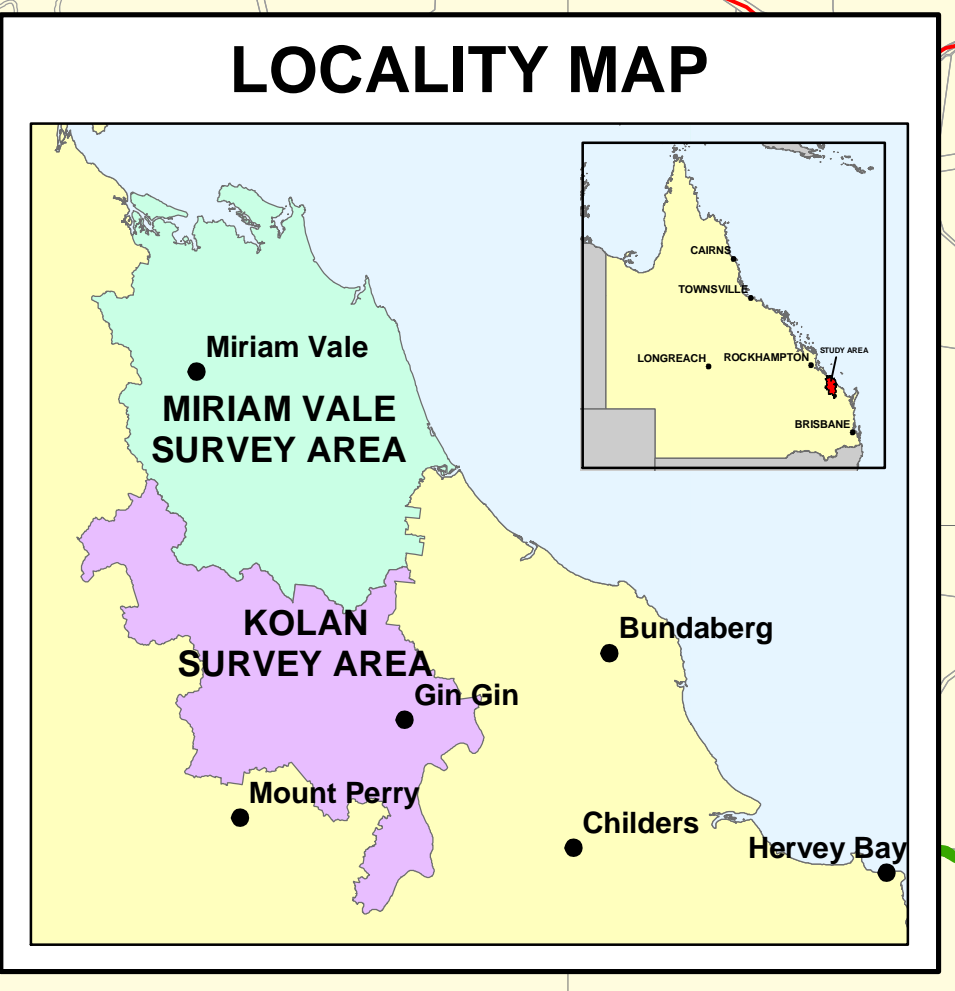
ACCURACY STATEMENT
Due to varying sources of data sets, spatial locations may not coincide when overlaid.

SURVEY by TE Donnellan, TR Wetherall and SC Griffiths, Department of Natural Resources, Mines and Energy, Bundaberg.
CARTOGRAPHY by RJ Ellis and AL Pathridge, Department of Natural Resources, Mines and Energy, Bundaberg.
BASE MAP - Compiled from the Digital Cadastral Data Base, 2000, Department of Natural Resources, Mines and Energy, Brisbane.

© The State of Queensland (Department of Natural Resources, Mines and Energy) 2004



REFERENCE			
	Residential (< 0.5 ha)		Dairy
	Rural (0.5 - 2 ha)		Aquaculture
	Rural (2 - 10 ha)		Native and Improved Pastures
	Rural (10 - 20 ha)		Rivers and creeks
	Rural (20 - 40 ha)		Roads and Road Reserves
	National Parks and Reserves		Sugarcane
	Horticulture		Paulownia
	Forestry		Forestry - Eucalypt Plantations
	Forestry		Forestry - Pine Plantations
	Gravel Pits		Piggeries
	Poultry Farms		Roads
	Rivers		Rivers
	Shire Boundaries		Localities



LANDUSE OF KOLAN SHIRE
NRM&E Ref. No. 2004-MVK-B-AD 5323