

LANDUSE OF MIRIAM VALE SHIRE

SCALE 1:100,000



NUMBERED GRID LINES ARE 10000 METRE INTERVALS OF THE MAP GRID OF AUSTRALIA, ZONE 56, GDA94
UNIVERSAL TRANSVERSE MERCATOR PROJECTION



METHODOLOGY
The information shown on this map has been derived from industry bodies and government sources with limited ground observations. The data was collected between 1999 and 2000.

DISCLAIMER
While every care is taken to ensure the accuracy of this product, the Department of Natural Resources, Mines and Energy makes no representations or warranties about its accuracy, reliability, completeness or suitability for any particular purpose and disclaims all responsibility and all liability (including without limitation, liability in negligence) for all expenses, losses, damages (including indirect or consequential damage) and costs which you might incur as a result of the product being inaccurate or incomplete in any way and for any reason.

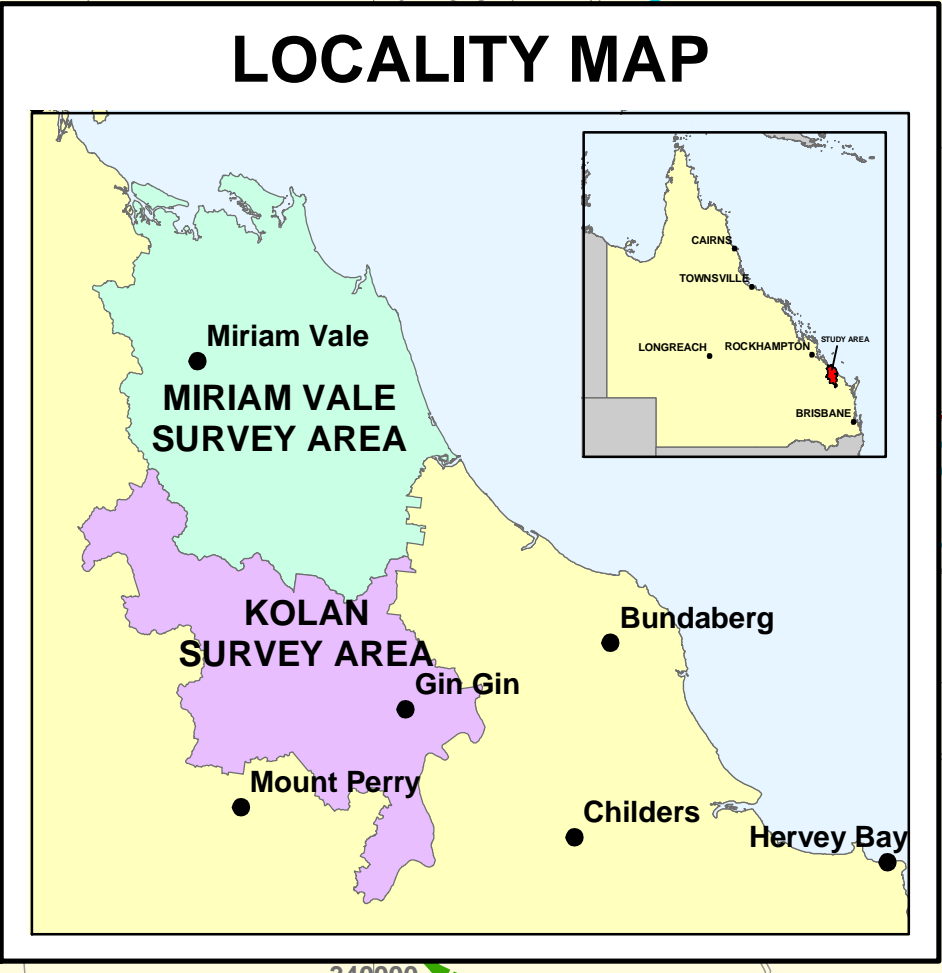
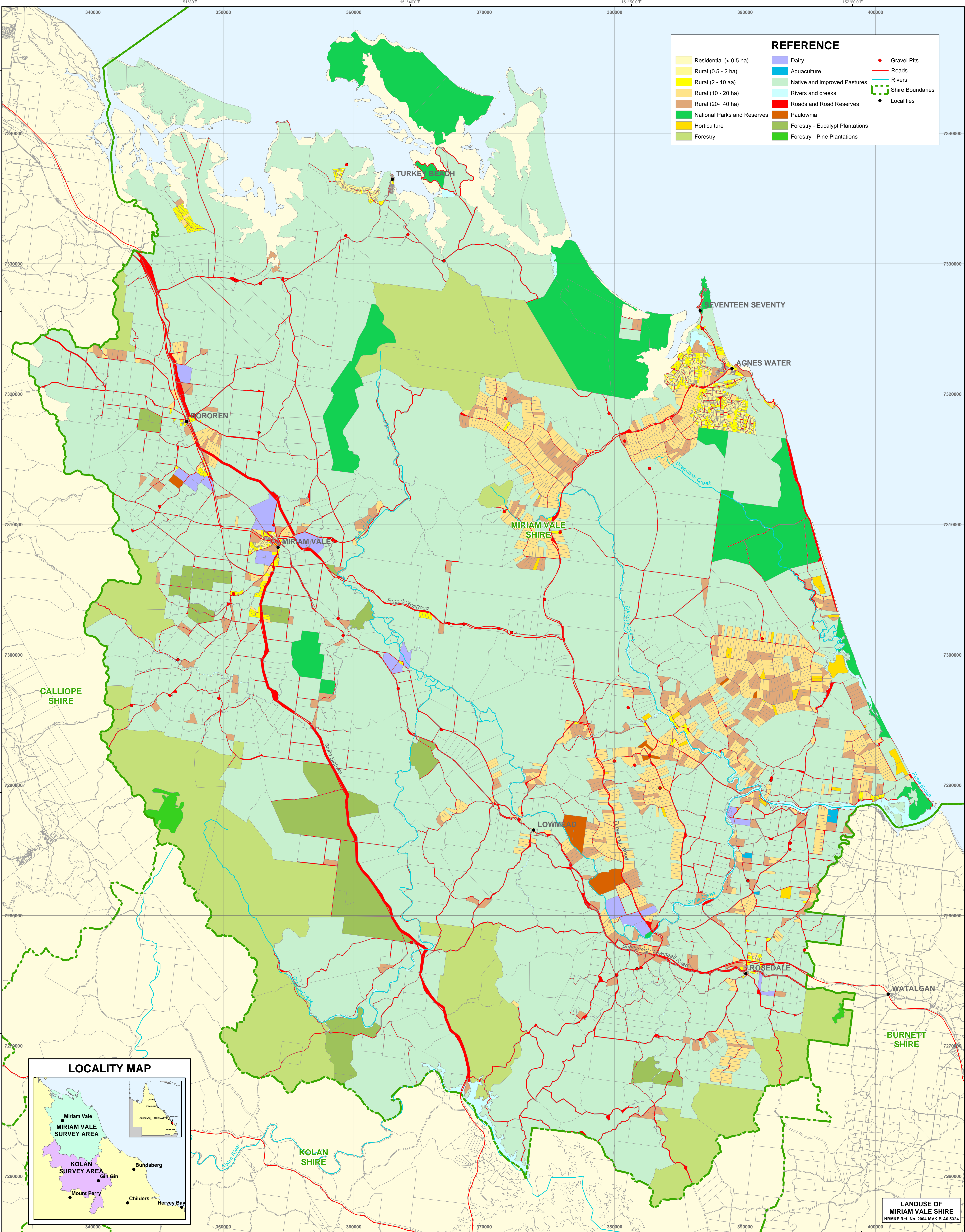
ACCURACY STATEMENT
Due to varying sources of data sets, spatial locations may not coincide when overlaid.

SURVEY by TE Donnellan, TR Wetherall and SC Griffiths, Department of Natural Resources, Mines and Energy, Bundaberg.
CARTOGRAPHY by RJ Ellis and AL Paltridge, Department of Natural Resources, Mines and Energy, Bundaberg.
BASE MAP - Compiled from the Digital Cadastral Data Base, 2000, Department of Natural Resources, Mines and Energy, Brisbane.

© The State of Queensland (Department of Natural Resources, Mines and Energy) 2004



REFERENCE			
Residential (< 0.5 ha)	Dairy	Gravel Pits	Roads
Rural (0.5 - 2 ha)	Aquaculture	Rivers	Shire Boundaries
Rural (2 - 10 aa)	Native and Improved Pastures	Rivers and creeks	Localities
Rural (10 - 20 ha)	Roads and Road Reserves	Paulownia	
Rural (20 - 40 ha)	Forestry - Eucalypt Plantations	Forestry - Pine Plantations	
National Parks and Reserves			
Horticulture			
Forestry			



LANDUSE OF
MIRIAM VALE SHIRE
NRM&E Ref. No. 2004-MVK-8-A0 5324