

LAND CAPABILITY CLASSES OF THE MIRIAM VALE AND KOLAN SHIRES

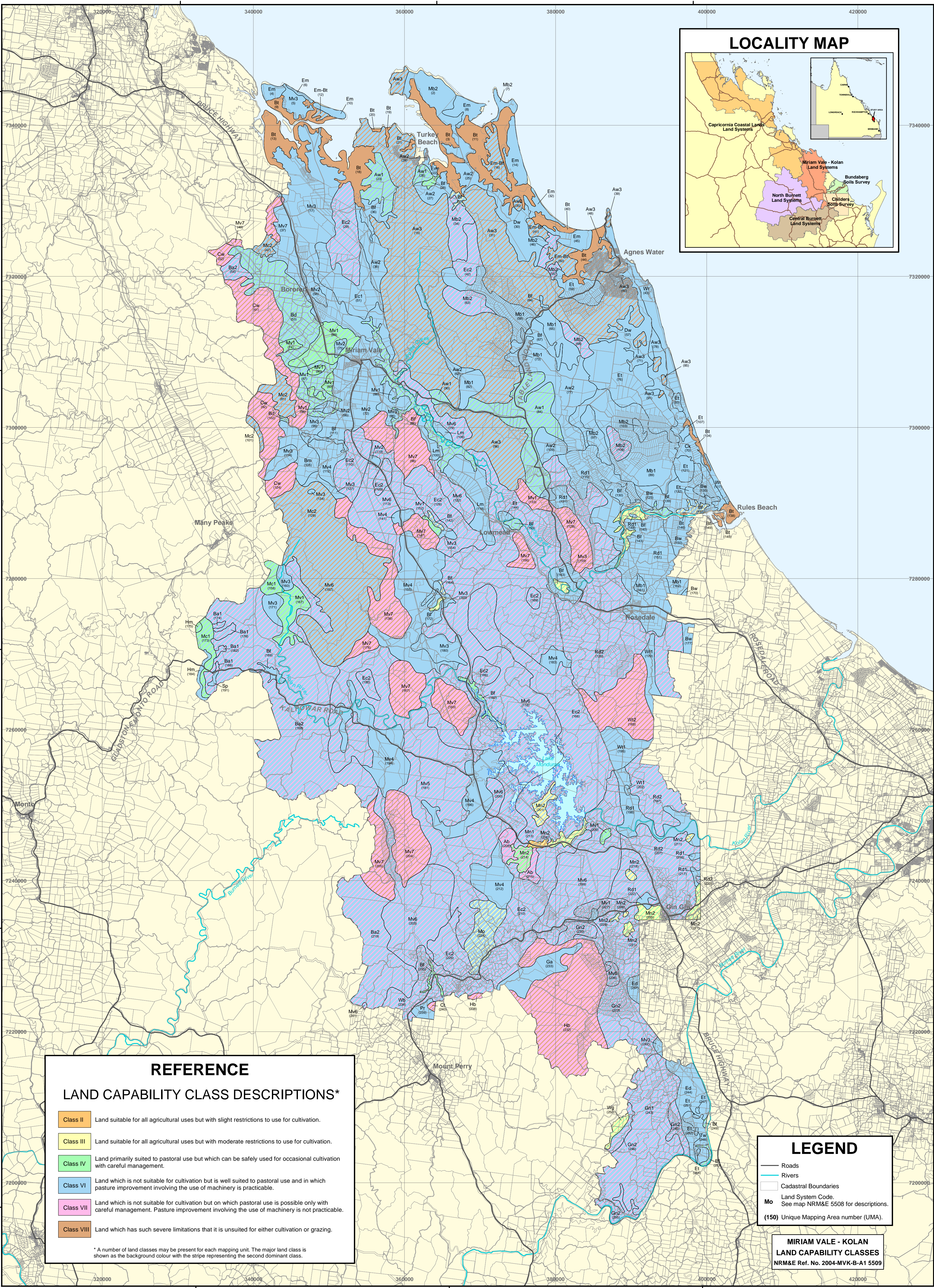
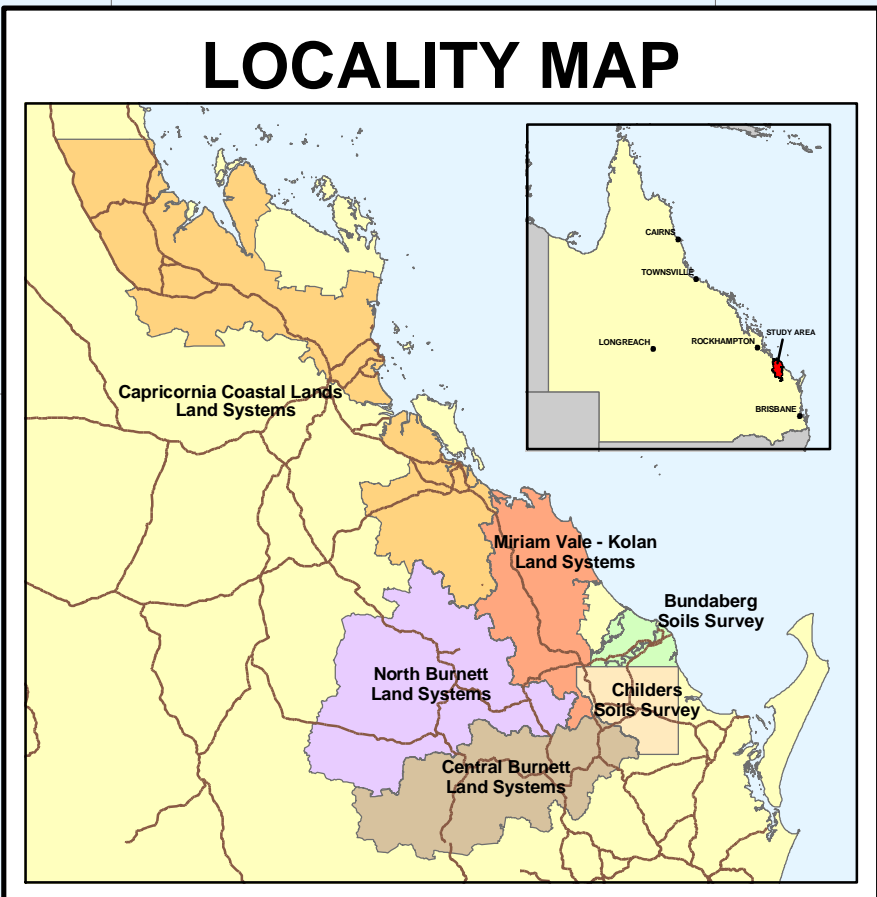


SCALE 1:250,000
0 5 10 15 20 Kilometres
NUMBERED GRID LINES ARE 20000 METRE INTERVALS OF THE MAP GRID OF AUSTRALIA, ZONE 56, GDA94
UNIVERSAL TRANSVERSE MERCATOR PROJECTION



While every care is taken to ensure the accuracy of this product, the Department of Natural Resources, Mines and Energy makes no representations or warranties about its accuracy, reliability, completeness or suitability for any particular purpose and disclaims all responsibility and all liability (including without limitation, liability in negligence) for all expenses, losses, damages (including indirect or consequential damage) and costs which you might incur as a result of the product being inaccurate or incomplete in any way and for any reason.

ACCURACY STATEMENT
Due to varying sources of data sets, spatial locations may not coincide when overlaid.
SURVEY by TE Donnellan, TR Wetherall and SC Griffiths, Department of Natural Resources, Mines and Energy, Bundaberg.
CARTOGRAPHY by RJ Ellis, Department of Natural Resources, Mines and Energy, Bundaberg.
BASE MAP - Compiled from the Digital Cadastral Data Base, 2004, Department of Natural Resources, Mines and Energy, Brisbane.
© The State of Queensland (Department of Natural Resources, Mines and Energy) 2004



REFERENCE LAND CAPABILITY CLASS DESCRIPTIONS*

- Class II** Land suitable for all agricultural uses but with slight restrictions to use for cultivation.
- Class III** Land suitable for all agricultural uses but with moderate restrictions to use for cultivation.
- Class IV** Land primarily suited to pastoral use but which can be safely used for occasional cultivation with careful management.
- Class VI** Land which is not suitable for cultivation but is well suited to pastoral use and in which pasture improvement involving the use of machinery is practicable.
- Class VII** Land which is not suitable for cultivation but on which pastoral use is possible only with careful management. Pasture improvement involving the use of machinery is not practicable.
- Class VIII** Land which has such severe limitations that it is unsuited for either cultivation or grazing.

* A number of land classes may be present for each mapping unit. The major land class is shown as the background colour with the stripe representing the second dominant class.

LEGEND

- Roads
- Rivers
- Cadastral Boundaries
- Land System Code
- Mo See map NRM&E 5508 for descriptions.
- (150) Unique Mapping Area number (UMA).

MIRIAM VALE - KOLAN
LAND CAPABILITY CLASSES
NRM&E Ref. No. 2004-MVK-B-A1 5509