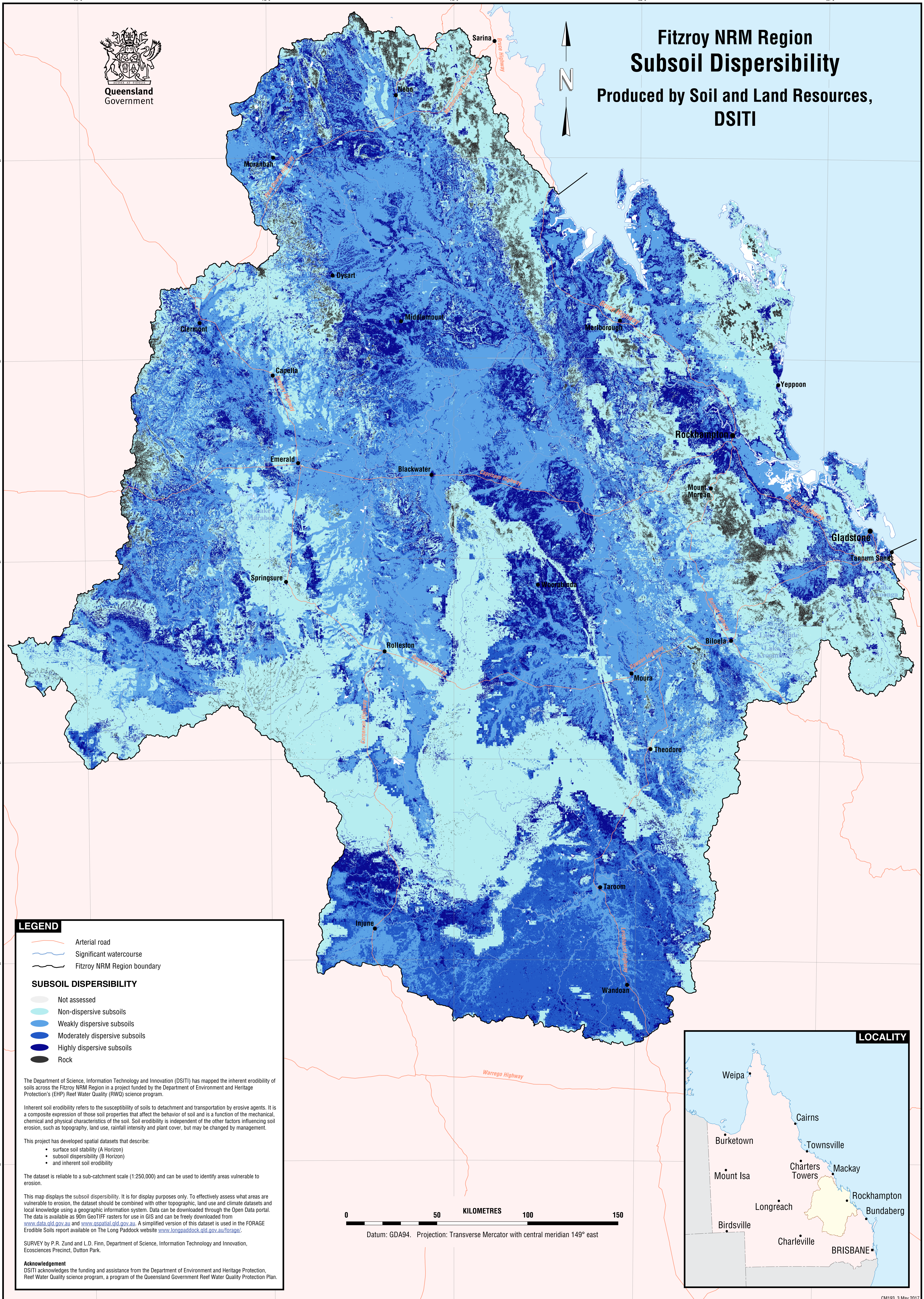




Queensland
Government

Fitzroy NRM Region Subsoil Dispersibility

Produced by Soil and Land Resources,
DSITI



- LEGEND**
- Arterial road
 - Significant watercourse
 - Fitzroy NRM Region boundary

- SUBSOIL DISPERSIBILITY**
- Not assessed
 - Non-dispersive subsoils
 - Weakly dispersive subsoils
 - Moderately dispersive subsoils
 - Highly dispersive subsoils
 - Rock

The Department of Science, Information Technology and Innovation (DSITI) has mapped the inherent erodibility of soils across the Fitzroy NRM Region in a project funded by the Department of Environment and Heritage Protection's (EHP) Reef Water Quality (RWQ) science program.

Inherent soil erodibility refers to the susceptibility of soils to detachment and transportation by erosive agents. It is a composite expression of those soil properties that affect the behavior of soil and is a function of the mechanical, chemical and physical characteristics of the soil. Soil erodibility is independent of the other factors influencing soil erosion, such as topography, land use, rainfall intensity and plant cover, but may be changed by management.

This project has developed spatial datasets that describe:

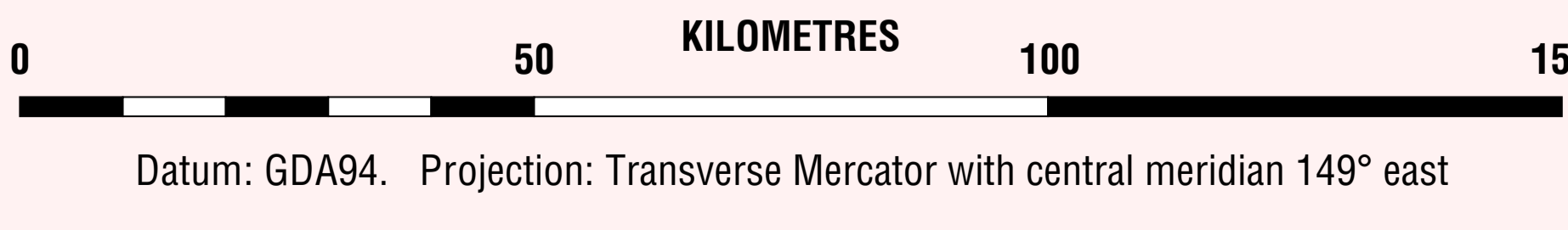
- surface soil stability (A Horizon)
- subsoil dispersibility (B Horizon)
- and inherent soil erodibility

The dataset is reliable to a sub-catchment scale (1:250,000) and can be used to identify areas vulnerable to erosion.

This map displays the subsoil dispersibility. It is for display purposes only. To effectively assess what areas are vulnerable to erosion, the dataset should be combined with other topographic, land use and climate datasets and local knowledge using a geographic information system. Data can be downloaded through the Open Data portal. The data is available as 90m GeoTIFF rasters for use in GIS and can be freely downloaded from www.data.qld.gov.au and www.qspatial.qld.gov.au. A simplified version of this dataset is used in the FORAGE Erodible Soils report available on The Long Paddock website www.longpaddock.qld.gov.au/forage/.

SURVEY by P.R. Zund and L.D. Finn, Department of Science, Information Technology and Innovation, Ecosciences Precinct, Dutton Park.

Acknowledgement
DSITI acknowledges the funding and assistance from the Department of Environment and Heritage Protection, Reef Water Quality science program, a program of the Queensland Government Reef Water Quality Protection Plan.



Datum: GDA94. Projection: Transverse Mercator with central meridian 149° east



LOCALITY