



# Queensland Government Gazette

**EXTRAORDINARY**

**PUBLISHED BY AUTHORITY**

ISSN 0155-9370

---

**VOL. 385]**

**THURSDAY 3 DECEMBER 2020**

**[No. 65**

---

## ***State Development and Public Works Organisation Act 1971***

### **Road Closure Notice (No. 2) 2020**

#### **Short title**

1. This notice may be cited as the *Road Closure Notice (No. 2) 2020*.

#### **Road Closure**

2. The volumetric portion of road in the Schedule will be permanently closed from on and from 3 December 2020 in accordance with s161 of the *State Development and Public Works Organisation Act 1971*.

#### **Reason for closure**

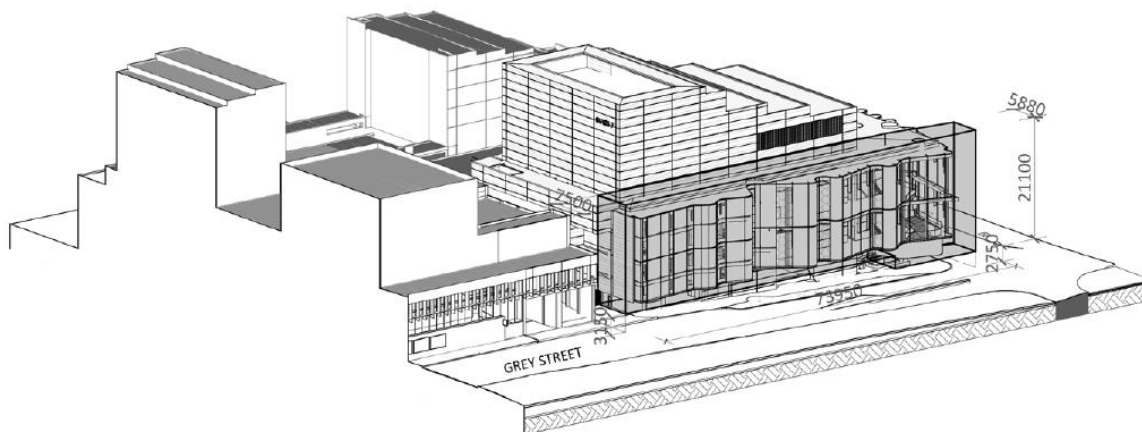
3. Facilitation works connected with the New Performing Arts Venue.

#### **Vesting of Land**

4. The road is closed pursuant to section 161(2)(a) of the *State Development and Public Works Organisation Act 1971* and will vest in the State of Queensland.

## SCHEDULE

An area of about 10684m<sup>3</sup>, being a volumetric portion of Grey Street, South Brisbane, adjacent to the Queensland Performing Arts Centre Playhouse Green, which commences at an approximate height of 2.75 metres above street level, for a height of 21.1 metres, length of 73.95 metres and width of up to 7.5 metres, as shown on the plan below.



## ENDNOTES

1. Published in the Gazette on 3 December 2020.
2. Not required to be laid before the Legislative Assembly.
3. The administering agency is the Office of the Coordinator-General.