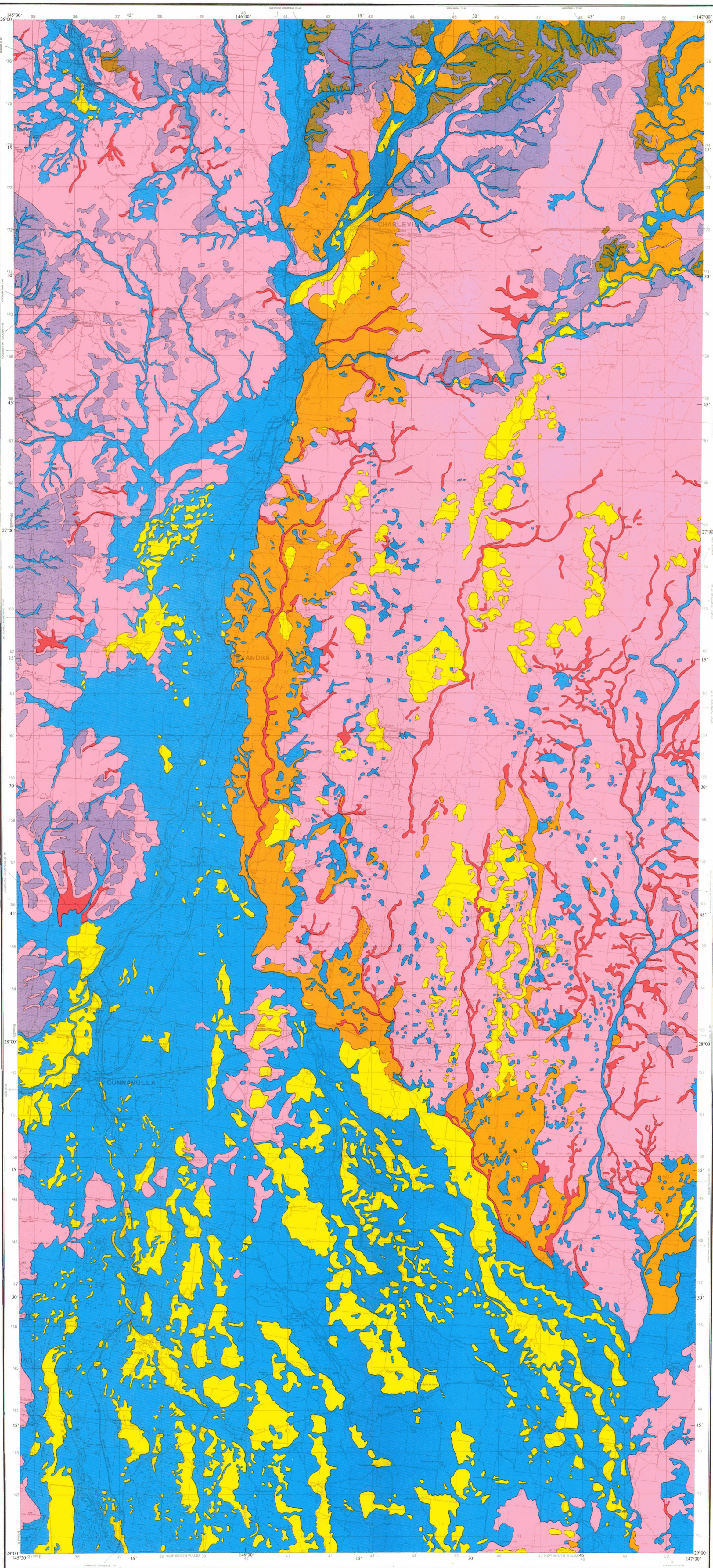


SOILS

by J. R. Mills



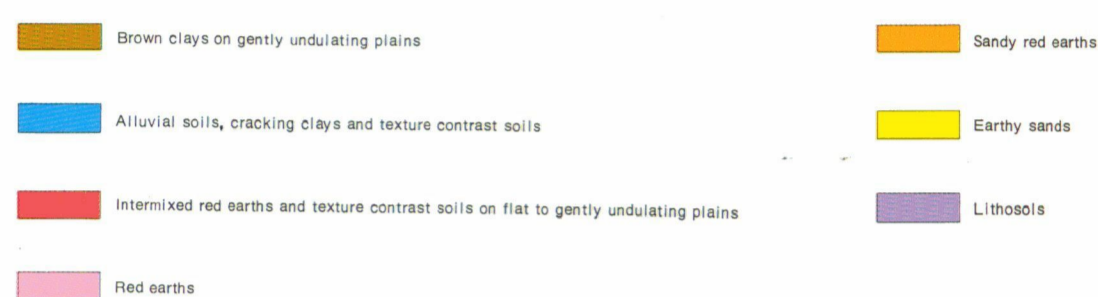
QUEENSLAND DEPARTMENT OF PRIMARY INDUSTRIES WESTERN ARID REGION LAND USE STUDY—PART 3

SCALE 1:500 000



Drawn by S. Wallace

SOILS REFERENCE



DISCLAIMER:

This is a scanned image and some detail may be illegible or lost. While every care is taken to ensure the accuracy of this product, the Department of Natural Resources and Mines makes no representations or warranties about its accuracy, reliability, completeness or suitability for any particular purpose and disclaims all responsibility and all liability (including without limitation, liability in negligence) for all expenses, losses, damages (including indirect or consequential damage) and costs which you might incur as a result of the product being inaccurate or incomplete in any way for any reason.

VEGETATION REFERENCE

- MULGA PREDOMINANT ASSOCIATIONS (M)**
 - 1 Soft mulga lands (M) Mulga/poplar box low open forest to low woodland, sometimes with distinct groving.
 - 2 Mulga, poplar box low open forest to low woodland.
 - 3 Mulga/poplar box/river-leaved ironbark/kunzea woodland to low woodland.
 - 4 Mulga, poplar box, eastern deciduous low woodland to shrubby low open woodland.
- Hard mulga lands (H)**
 - 1 Mulga/poplar box tall shrubland to low woodland.
 - 2 Mulga, western bloodwood tall shrubland to low woodland, with mulga/facewood/Croton garhneyana wood tall shrubland/low woodland on the lower slopes and steep retreat zones.
- OTHER ACACIA PREDOMINANT ASSOCIATIONS (R)**
 - 1 Smokebark/Poplar tall shrubland to low woodland; minor ironwood tall shrubland.
 - 2 Smokebark/Poplar tall shrubland to low woodland, with mulga/mountain yepunya/Croton garhneyana wood tall shrubland/low woodland on the lower slopes and steep retreat zones.
- EUCALYPT PREDOMINANT ASSOCIATIONS (E)**
 - 1 River red gum, coolibah/paper-barked tea-tree woodland.
 - 2 River red gum or coolibah or poplar box (low) woodland to (low) open woodland.
 - 3 Yapunyah/gidgee/coolibah woodland to (low) open woodland.
 - 4 Poplar box/mulga/sandwood grassy or shrubby (low) woodland to (low) open woodland.
 - 5 Coolibah low woodland to wooded tussock grassland.
- GIDGEE PREDOMINANT ASSOCIATIONS (G)**
 - 1 Gidgee, yellow pine low open forest to low woodland; occasionally yepunya, gidgee layered open forest.
 - 2 Gidgee/Arctostaphylos/sandwood herbaceous or shrubby low woodland; occasionally brigalow low woodland to tall shrubland.
 - 3 Gidgee low woodland.
- BRIGALOW PREDOMINANT ASSOCIATIONS (B)**
 - 1 Brigalow, mountain yepunya/Croton gum wood tall shrubland/low woodland.
 - 2 Brigalow/bottlebrush/whitebark/peppercorn low woodland to tall shrubland; occasionally gidgee low woodland.
- CYPRESS PINE PREDOMINANT ASSOCIATIONS (C)**
 - 1 Cypress pine woodland with mulga/Arctostaphylos/ironwood/low woodland to low open woodland on the lower slopes.
 - 2 Cypress pine, eastern, long-fruited bloodwood/river-leaved ironbark woodland.
- SPINIFEX PREDOMINANT ASSOCIATIONS (S)**
 - 1 Spinifex, silver-leaved ironbark wood/shrubby (open) hummock grassland to grassy low open woodland/tall open shrubland.
- MITCHELL GRASS PREDOMINANT ASSOCIATIONS (F)**
 - 1 Mitchell grass/Croton and Scaevola tussock grassland to open tussock grassland and associated sparse herbfields (Alopecurus).
 - 2 Mitchell grass tussock grassland to open tussock grassland with scattered areas of myrtle/ironwood/peppercorn/ironbark low woodland/shrubland.
- SHORT-GRASS PREDOMINANT ASSOCIATIONS (A)**
 - 1 Short-grass/coolibah whitebark, poplar box open grassland to sparse grassland, with areas of poplar box/gidgee, sandwood shrubby woodland.
 - 2 Short-grass, gunsheep shrubby open grassland to grassy open shrubland, with areas of cypress pine/mulga/Arctostaphylos/ironwood woodland to open woodland.
- CLAYPAN VEGETATION (L)**
 - 1 Herbland, seagull and/or kangaroo open hummock grassland.

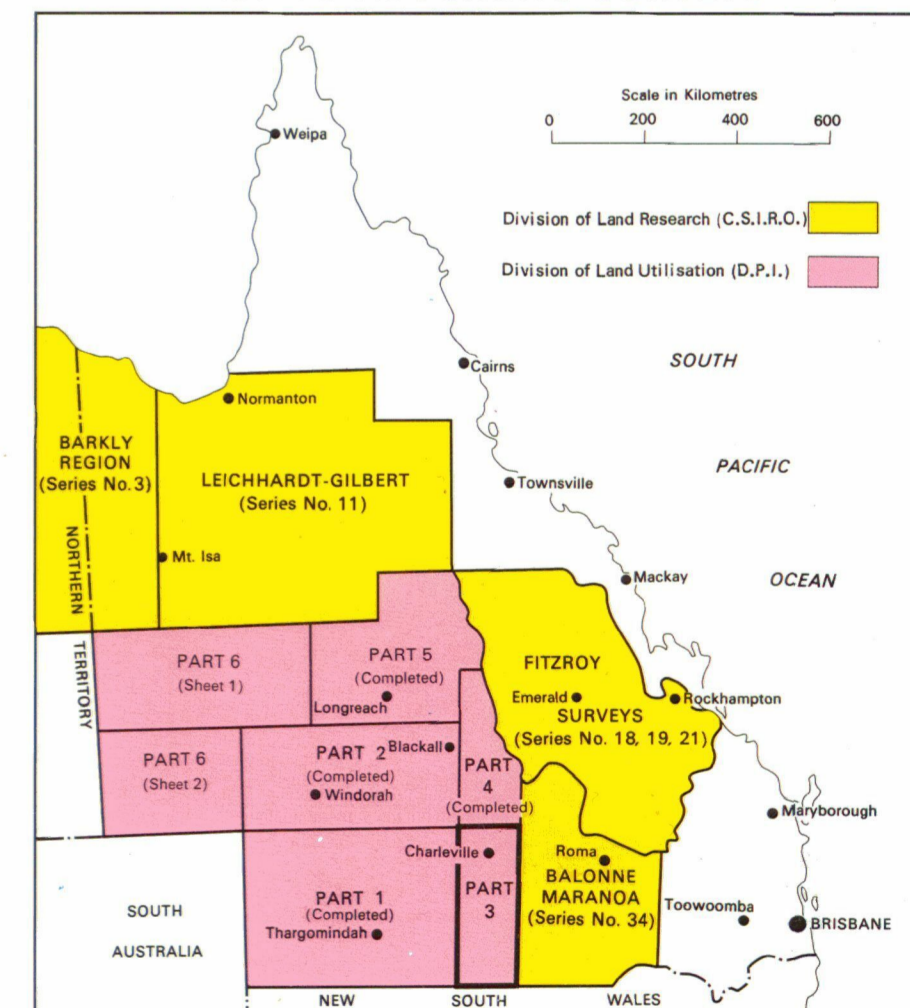
IMPORTANT NOTES

1. In some areas, mixtures of two plant associations may occur. In these cases, component vegetation types are indicated.
 - e.g. (1) represents a complex of E1 and E2, the former being dominant.
 - (2) represents a complex of R2 and G1, the former being dominant.
2. / means with or without.
3. () means both categories present; e.g. (low) woodland, range from low woodland to woodland.

KEY TO 1:250 000 AREAS

ADAYALE	AUGATHELLA	EDDYSTONE
QUIPPE	CHARLEVILLE	MITCHELL
TOOPINYE	WYANDRA	HOMEBOIN
EULO	CUNNAMULLA QLD	DIRRANBANDI
YANTABULLA	ENNGONIA	ANGLEDOOL

KEY TO ADJOINING SURVEYS



© QUEENSLAND GOVERNMENT 1982.

SOILS compiled by J. R. Mills, Division of Land Utilisation, Queensland Department of Primary Industries.

VEGETATION compiled by Rosemary W. Purdie, Botany Branch, Queensland Department of Primary Industries.

PREPARED by the Division of Land Utilisation, Queensland Department of Primary Industries.

CARTOGRAPHIC BASE compiled by the Division of Land Utilisation, Queensland Department of Primary Industries from positives supplied by the Division of National Mapping, Department of National Development and Energy, Canberra.

PRINTED at the Government Printing Office, Brisbane, 1982.

VEGETATION

by Rosemary W. Purdie

