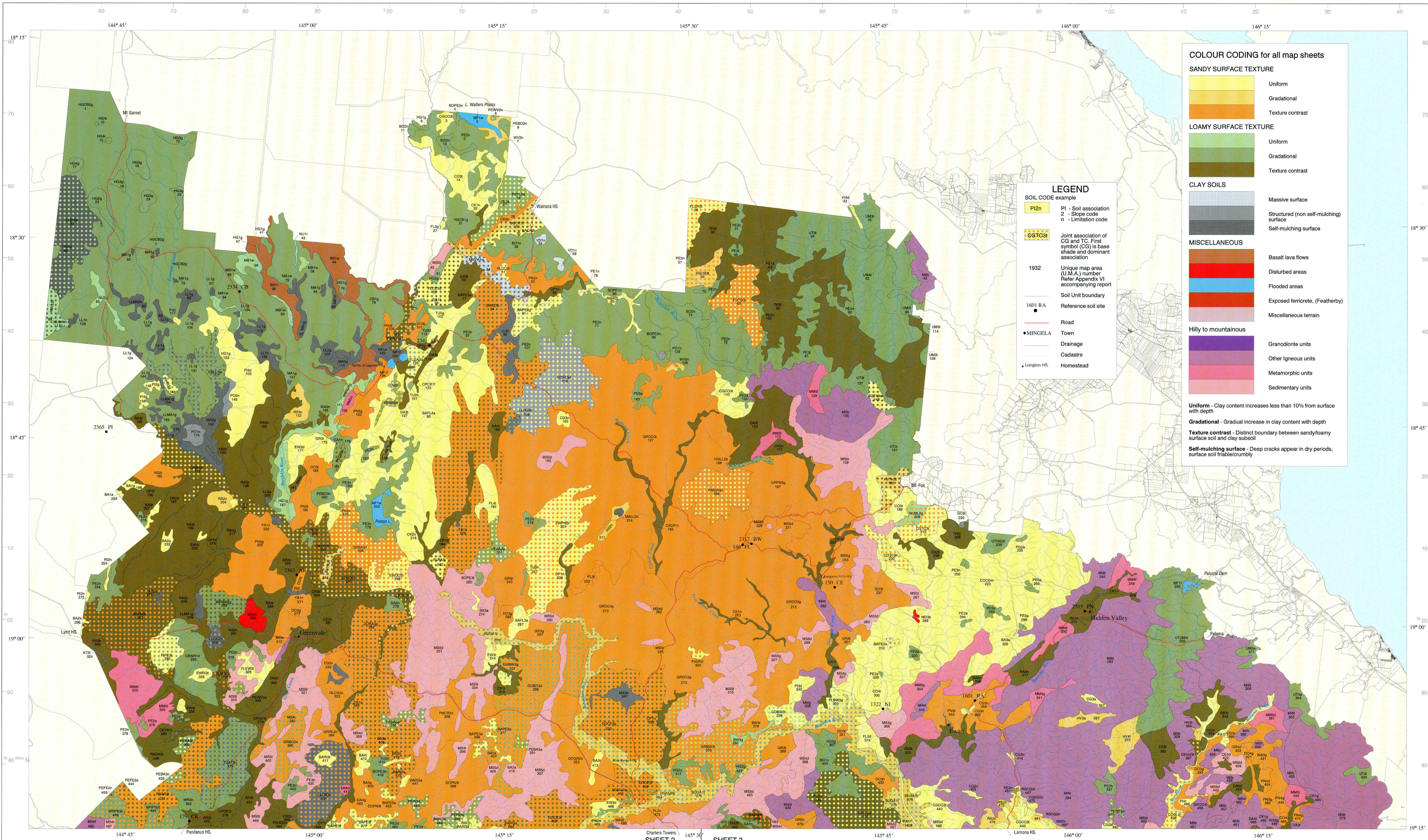


Soil Associations of the Dalrymple Shire

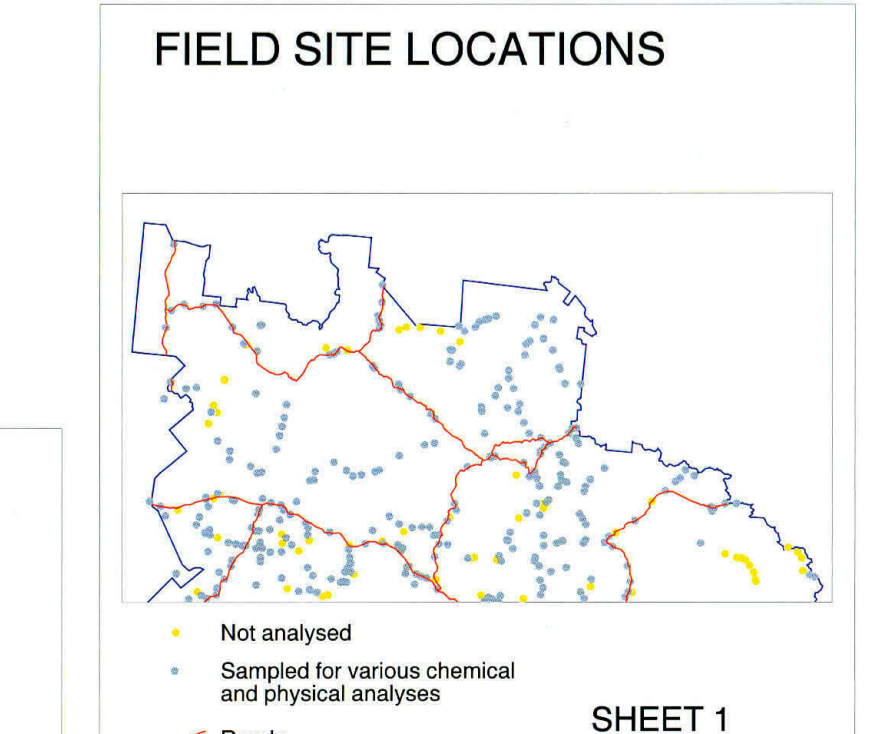
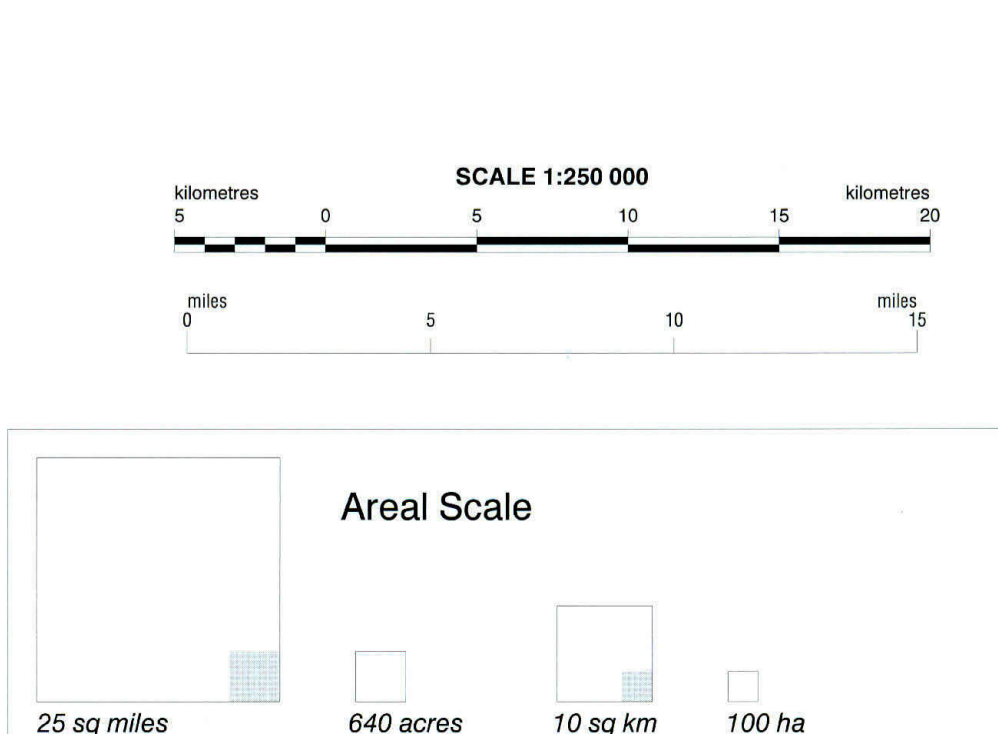
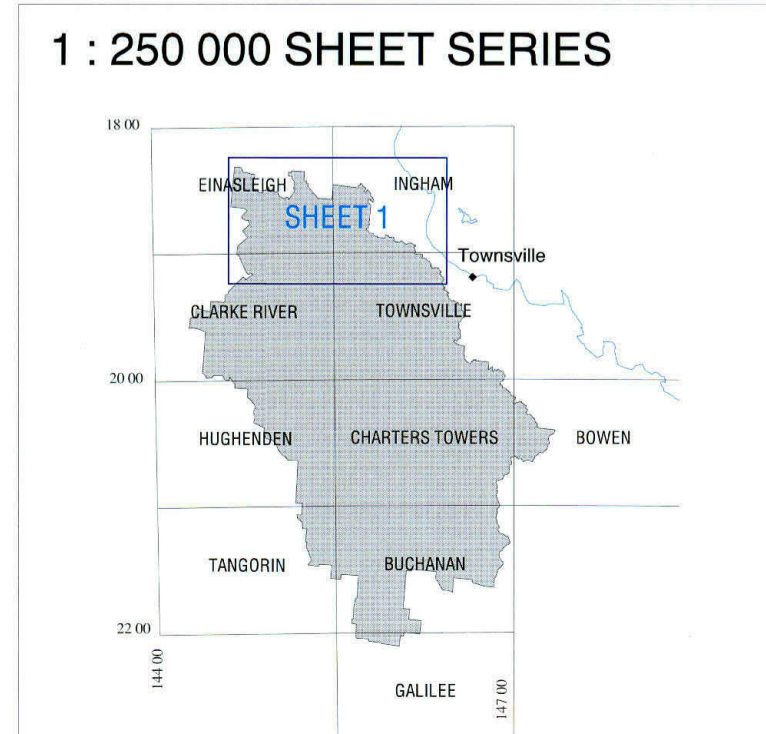
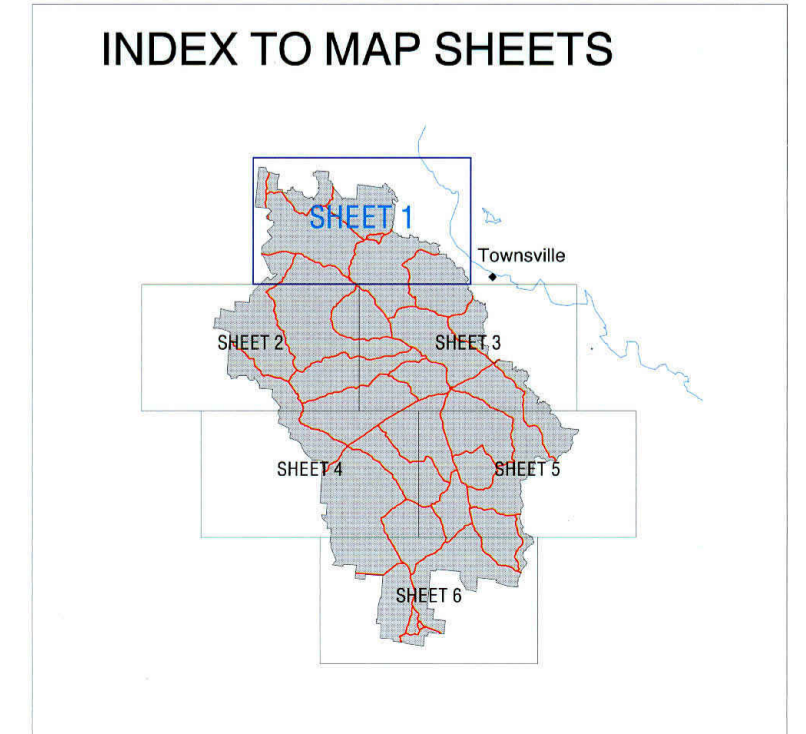
M.G. Cannon, CSIRO Division of Soils, L.G. Rogers, E.V. Barry, M.W.M. DeCorte, M.J. Bright, Department of Natural Resources

1) Australian Soil Classification, Isbell (1996) - dominant Order in bold 2) Great Soil Group, Stace et al. (1988) NSG - No suitable group

REFERENCE table with columns: NAME, CLASSIFICATION, DESCRIPTION, LANDFORM, COMMON VEGETATION FORM AND SPECIES, GEOLOGICAL SUBSTRATE. Includes lists for SANDY SURFACE TEXTURE, LOAMY SURFACE TEXTURE, CLAY SOILS, MISCELLANEOUS, and SOLOILS.



COLOUR CODING for all map sheets. Legend for SANDY SURFACE TEXTURE, LOAMY SURFACE TEXTURE, CLAY SOILS, MISCELLANEOUS, and SOLOILS. Includes texture contrast and surface descriptions.



Bibliographic reference: Cannon, M.G., Rogers, L.G., Barry, E.V., DeCorte, M.W.M., and Bright, M.J. (1997). 'Soil Associations of the Dalrymple Shire' (Scale 1:250000) (6 map sheets). To accompany Rogers, L.G., Cannon, M.G., Barry, E.V. (1997). 'Land Resources of the Dalrymple Shire'.

SLOPE CODES table with 8 categories: 1: Level (0-1%), 2: Very gently inclined (1-3%), 3: Gently inclined (3-10%), 4: Moderately inclined (10-32%), 5: Steep (32-55%), 6: Very steep (55-100%), 7: Precipitous (100-300%), 8: Cliffed (>300%).

LANDUSE LIMITATION CODES: a: access (unit bounded by scarps), b: badlands (eroded areas), c: shallow (<55cm to rock), d: flooding (man made or natural), e: STONY, f: human influence (mining/urban), g: gully microrelief (>20cm deep), h: tops apparent, i: rock outcrop, j: short slopes / dissected, k: wetness (soils saturated > 3 months)

DISCLAIMER: This is a scanned image and some detail may be illegible or lost. While every care is taken to ensure the accuracy of this product, the Department of Natural Resources and Mines makes no representations or warranties about its accuracy, reliability, completeness or suitability for any particular purpose and disclaims all responsibility and all liability (including without limitation, liability in negligence) for all expenses, losses, damages (including indirect or consequential damage) and costs which you might incur as a result of the product being inaccurate or incomplete in any way for any reason.