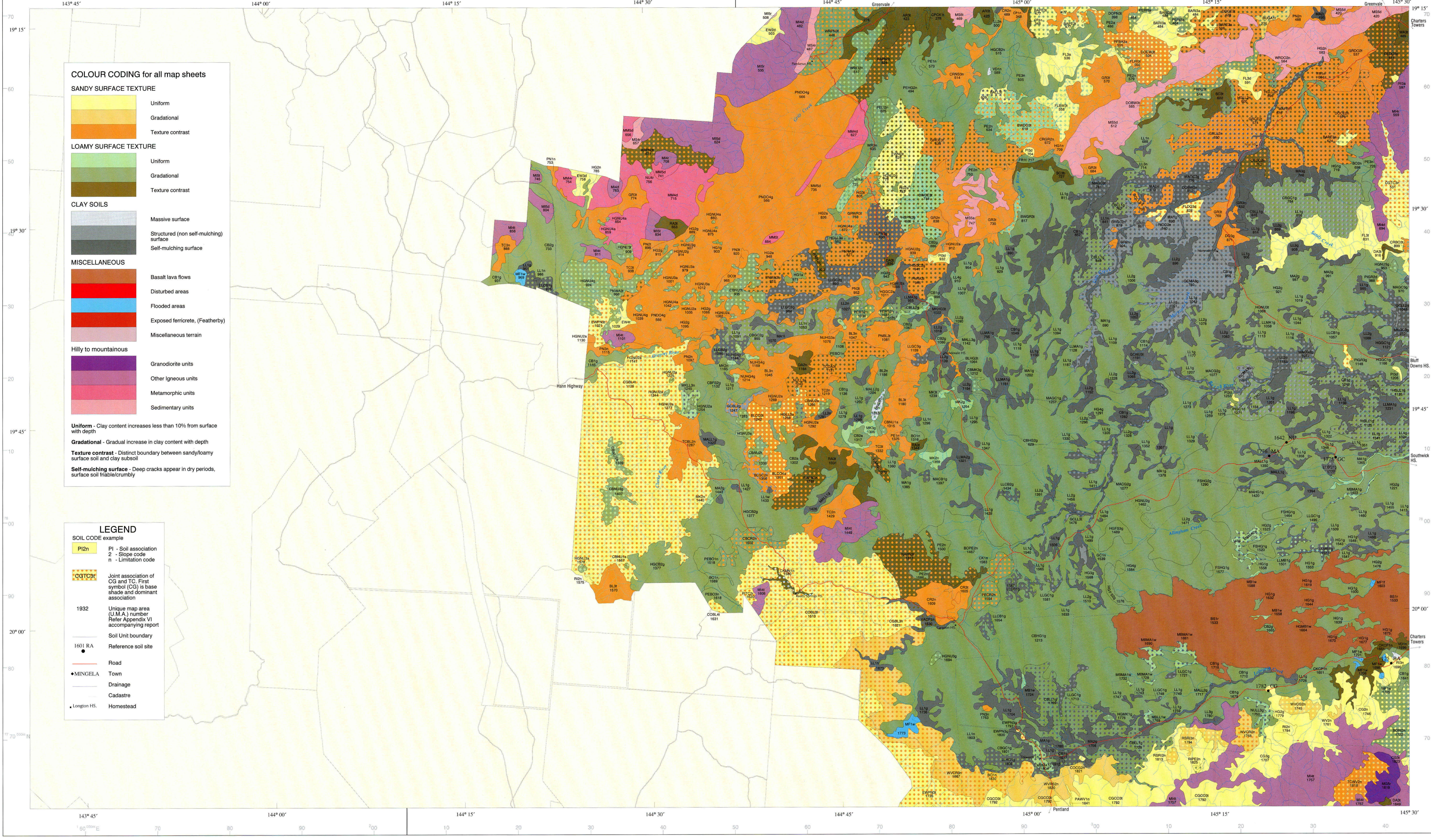


Soil Associations of the Dalrymple Shire

M.G. Cannon, CSIRO Division of Soils, L.G. Rogers, E.V. Barry, M.W.M. DeCorte, M.J. Bright, Department of Natural Resources

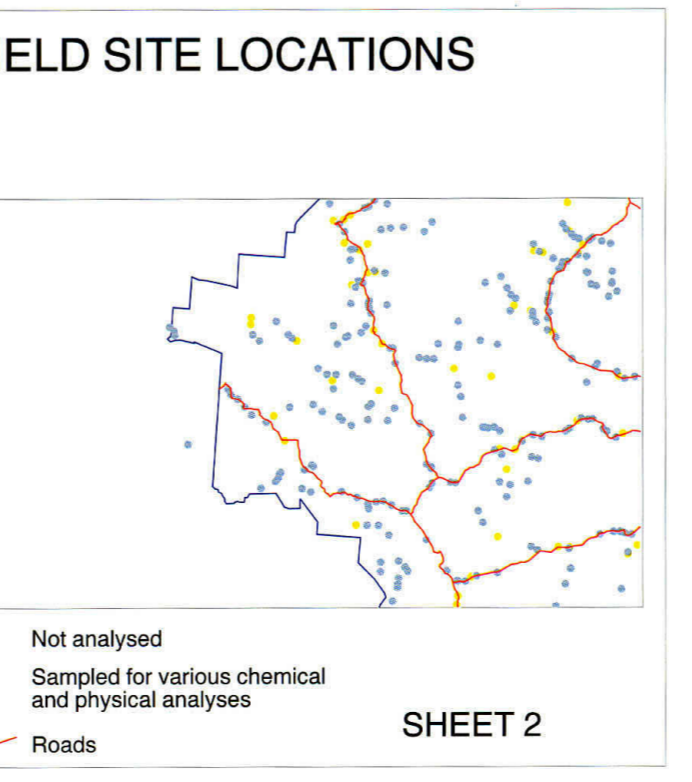
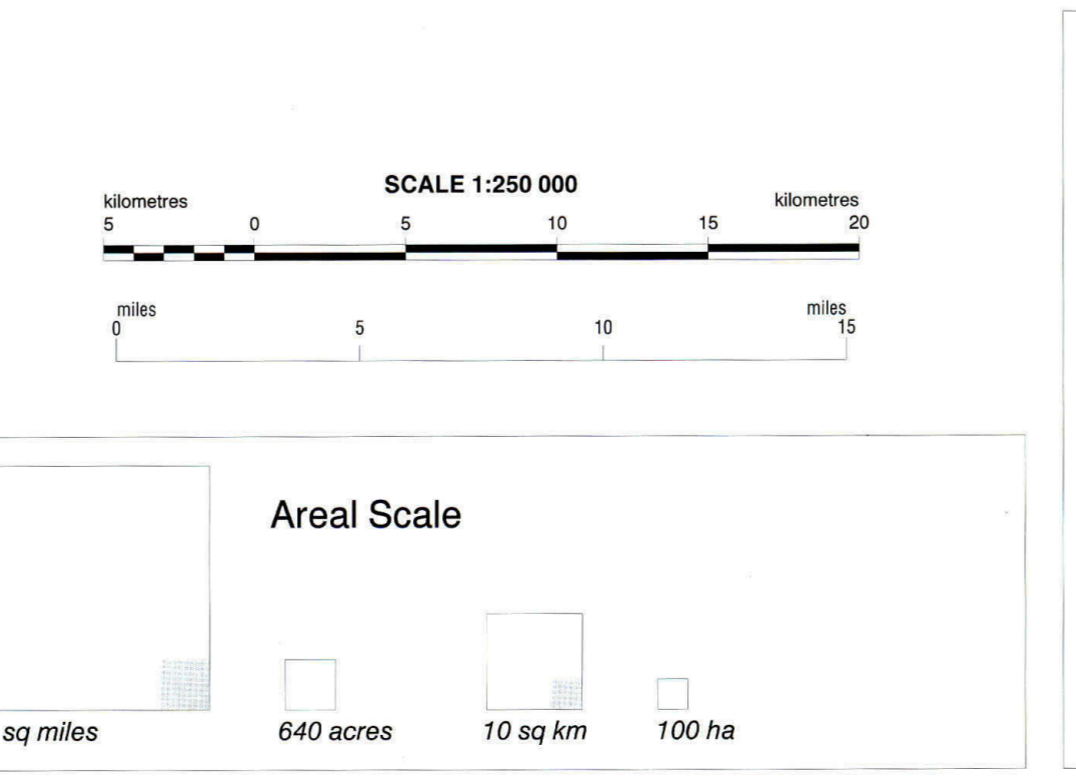
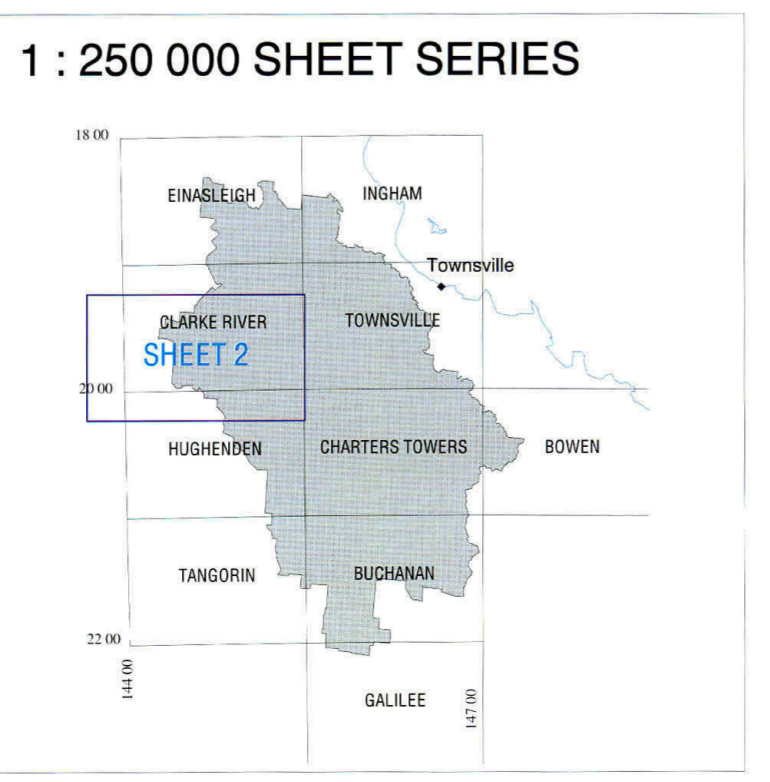
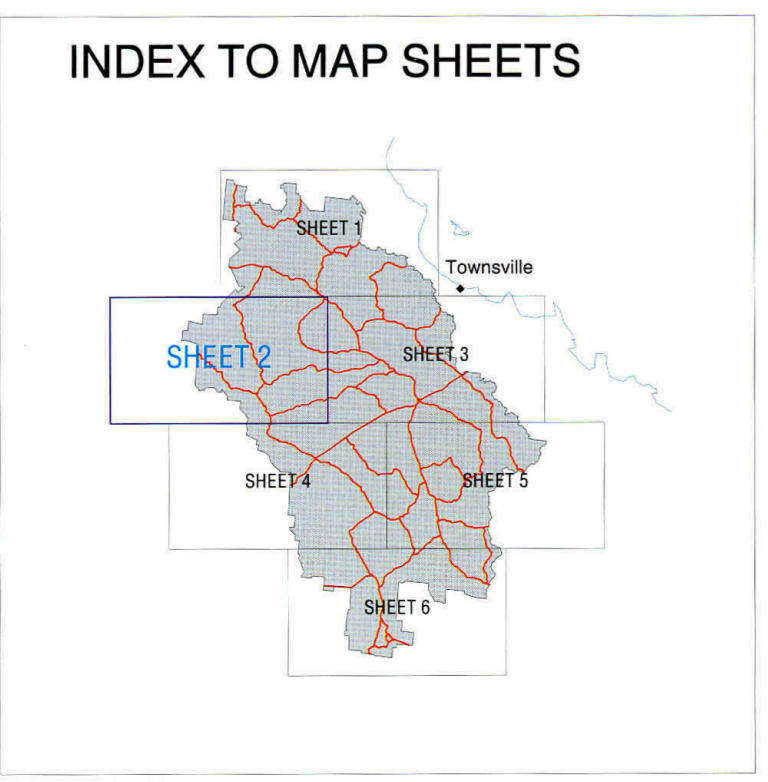
* 1) Australian Soil Classification, Isbell (1996) - dominant Order in bold 2) Great Soil Group, Stace et al. (1969) NSG - No suitable group

REFERENCE table with columns: NAME, CLASSIFICATION, DESCRIPTION, LANDFORM, COMMON VEGETATION FORM AND SPECIES, GEOLOGICAL SUBSTRATE. Includes sub-tables for SANDY SURFACE TEXTURE, LOAMY SURFACE TEXTURE, CLAY SOILS, MISCELLANEOUS, and SOIL CODES.



COLOUR CODING for all map sheets. SANDY SURFACE TEXTURE: Uniform, Gradational, Texture contrast. LOAMY SURFACE TEXTURE: Uniform, Gradational, Texture contrast. CLAY SOILS: Massive surface, Structured (non self-mulching) surface, Self-mulching surface. MISCELLANEOUS: Basalt lava flows, Disturbed areas, Flooded areas, Exposed ferricrete, (Featherby) Miscellaneous terrain, Hilly to mountainous, Granodiorite units, Other igneous units, Metamorphic units.

LEGEND. SOIL CODE example: P12n (P1 - Soil association, 2 - Slope code, n - Limitation code). Joint association of CG and TC. Unique map area (U.M.A.) number. 1932 Refer Appendix VI. Soil Unit boundary. 1001 RA Reference soil site. ROAD, MINGCELA Town, Drainage, Cadastre, Longton HS. Homestead.



Bibliographic reference: Cannon, M.G., Rogers, L.G., Barry, E.V., DeCorte, M.W.M., and Bright, M.J. (1997). 'Soil Associations of the Dalrymple Shire' (Scale 1:250000 map sheets). To accompany Rogers, L.G., Cannon, M.G., Barry, E.V. (1997), 'Land Resources of the Dalrymple Shire'. Acknowledgements: Produced by the Department of Natural Resources (DNR), GIS and Cartography Unit, Mareeba and CSIRO Division of Soils, Townsville. Cartography by S.R. Philip (DNR) & T. Sullivan (CSIRO) 1997. Use of map: This map is designed for use as the published scale. Projection: Universal Transverse Mercator. Horizontal Datum: Australian Geodetic Datum 1966. Grid: Central Meridian 147 00 East. Source data: Field survey and interpretation of aerial photography and satellite imagery. Base map compiled from Digital Cadastral Data Base supplied by the Department of Natural Resources. Drainage data supplied by AUSLIG.

SLOPE CODES: 1: Level (0-1%), 2: Very gently inclined (1-3%), 3: Gently inclined (3-10%), 4: Moderately inclined (10-32%), 5: Steep (32-56%), 6: Very steep (56-100%), 7: Precipitous (100-300%), 8: Cliffed (>300%). LANDUSE LIMITATION CODES: a: access (unit bounded by scarps), b: badlands (eroded areas), c: shallow (<55cm to rock), d: flooding (man made or natural), e: stony, f: human influence (mining/urban), g: gilgai microfrelid (>20cm deep), h: none apparent, i: rock outcrop, j: short slopes / dissected, w: wetness (soils saturated > 3 months).

DISCLAIMER: This is a scanned image and some detail may be illegible or lost. While every care is taken to ensure the accuracy of this product, the Department of Natural Resources and Mines makes no representations or warranties about its accuracy, reliability, completeness or suitability for any particular purpose and disclaims all responsibility and all liability (including without limitation, liability in negligence) for all expenses, losses, damages (including indirect or consequential damage) and costs which you might incur as a result of the product being inaccurate or incomplete in any way for any reason.