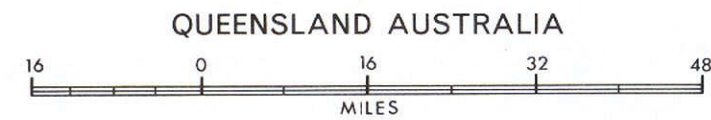
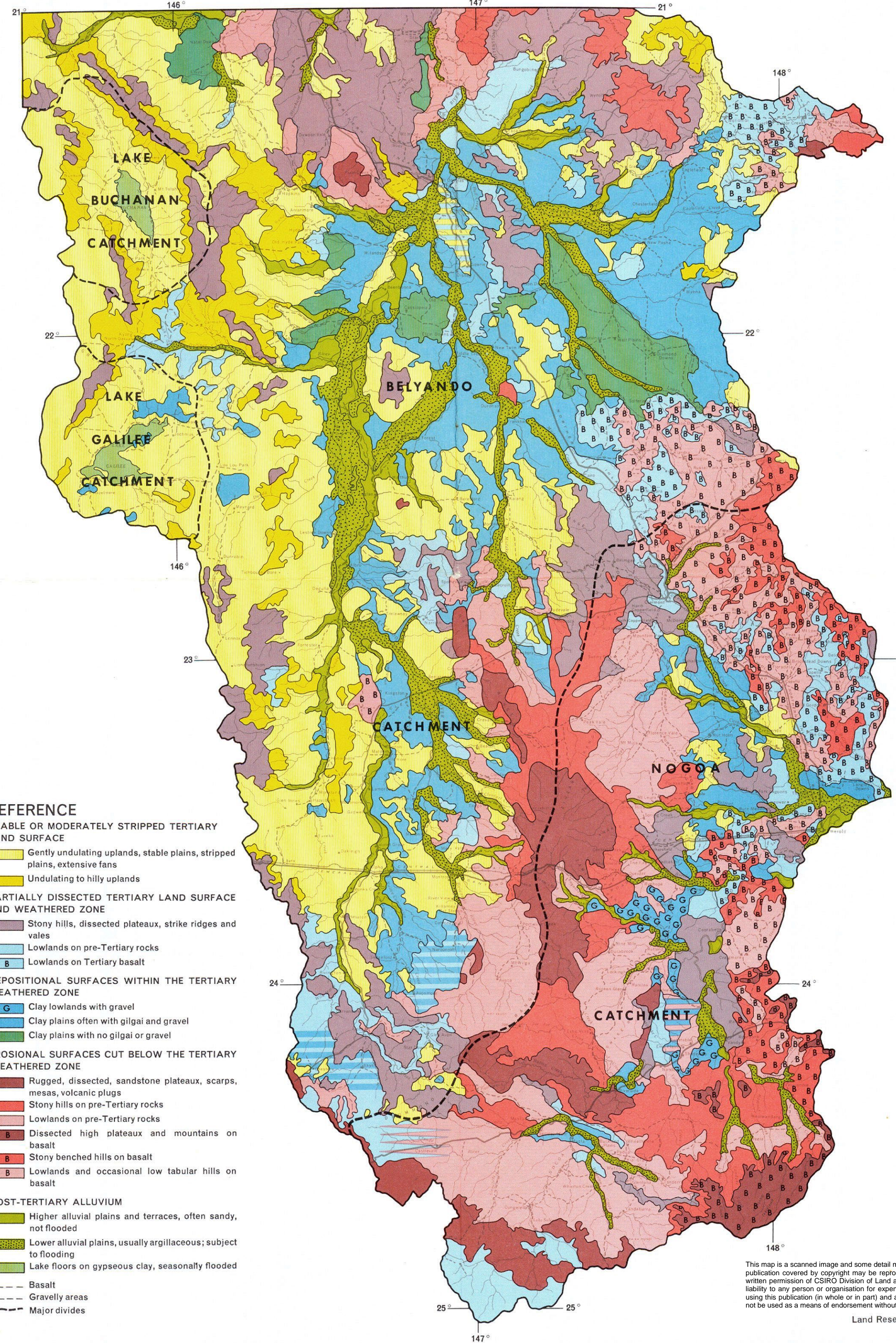


DIVISION OF LAND RESEARCH
COMMONWEALTH SCIENTIFIC AND INDUSTRIAL RESEARCH ORGANIZATION
NOGOA-BELYANDO AREA

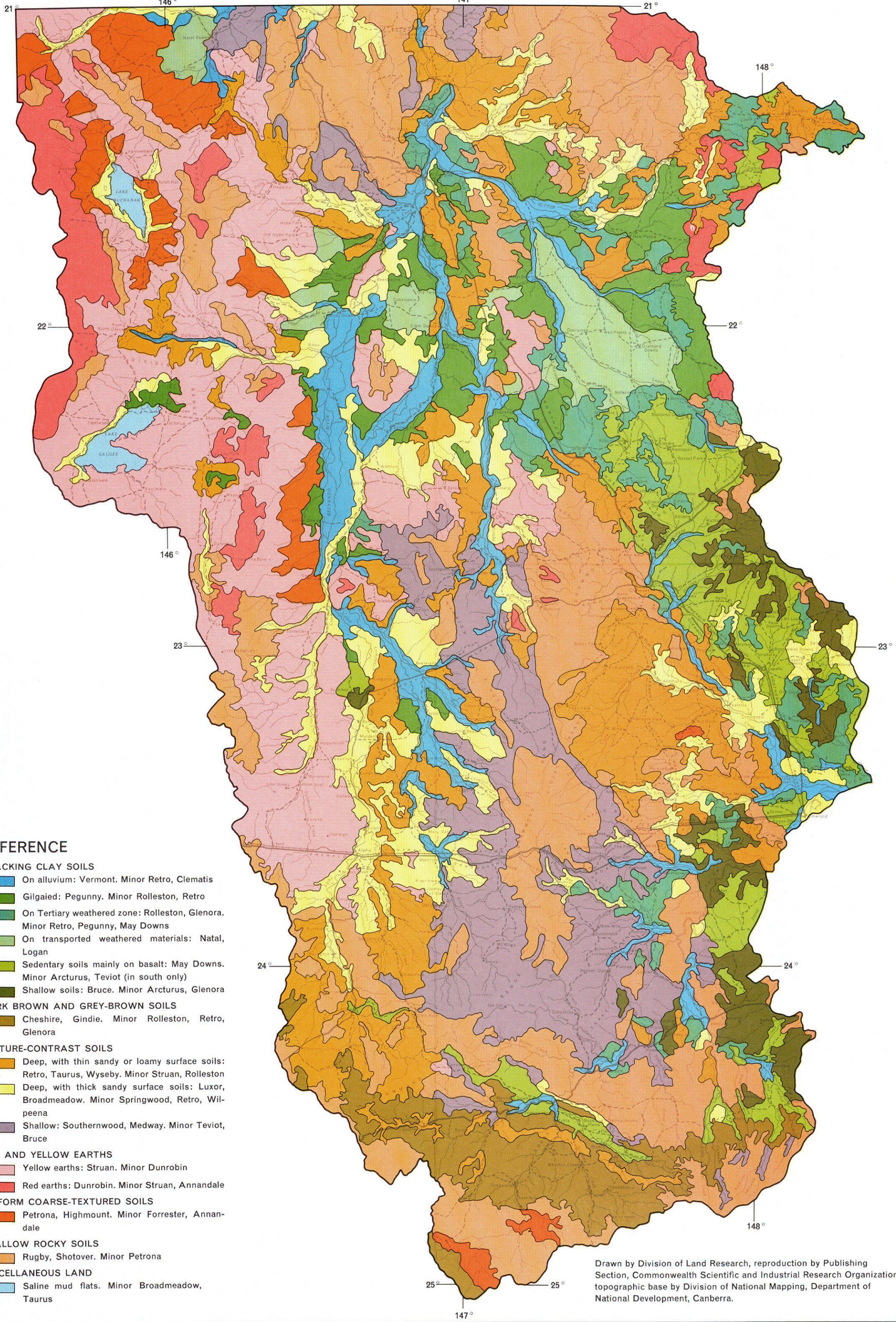


GEOLOGY AND GEOMORPHOLOGY
by R. W. Galloway



- REFERENCE**
- STABLE OR MODERATELY STRIPPED TERTIARY LAND SURFACE**
- Gently undulating uplands, stable plains, stripped plains, extensive fans
 - Undulating to hilly uplands
- PARTIALLY DISSECTED TERTIARY LAND SURFACE AND WEATHERED ZONE**
- Stony hills, dissected plateaux, strike ridges and vales
 - Lowlands on pre-Tertiary rocks
 - Lowlands on Tertiary basalt
- DEPOSITIONAL SURFACES WITHIN THE TERTIARY WEATHERED ZONE**
- Clay lowlands with gravel
 - Clay plains often with gilgai and gravel
 - Clay plains with no gilgai or gravel
- EROSIONAL SURFACES CUT BELOW THE TERTIARY WEATHERED ZONE**
- Rugged, dissected, sandstone plateaux, scarps, mesas, volcanic plugs
 - Stony hills on pre-Tertiary rocks
 - Lowlands on pre-Tertiary rocks
 - Dissected high plateaux and mountains on basalt
 - Stony benched hills on basalt
 - Lowlands and occasional low tabular hills on basalt
- POST-TERTIARY ALLUVIUM**
- Higher alluvial plains and terraces, often sandy, not flooded
 - Lower alluvial plains, usually argillaceous; subject to flooding
 - Lake floors on gypsaceous clay, seasonally flooded
- Other symbols:**
- Basalt
 - Gravelly areas
 - Major divides

SOILS by R. H. Gunn
(Land systems grouped according to their dominant soil families)



- REFERENCE**
- CRACKING CLAY SOILS**
- On alluvium: Vermont, Minor Retro, Clematis
 - Gilgaid: Pegunny, Minor Rolleston, Retro
 - On Tertiary weathered zone: Rolleston, Glenora, Minor Retro, Pegunny, May Downs
 - On transported weathered materials: Natal, Logan
 - Sedentary soils mainly on basalt: May Downs, Minor Arcturus, Teviot (in south only)
 - Shallow soils: Bruce, Minor Arcturus, Glenora
- DARK BROWN AND GREY-BROWN SOILS**
- Cheshire, Gindie, Minor Rolleston, Retro, Glenora
- TEXTURE-CONTRAST SOILS**
- Deep, with thin sandy or loamy surface soils: Retro, Taurus, Wyseby, Minor Struan, Rolleston
 - Deep, with thick sandy surface soils: Luxor, Broadmeadow, Minor Springwood, Retro, Wilpeena
 - Shallow: Southernwood, Medway, Minor Teviot, Bruce
- RED AND YELLOW EARTHS**
- Yellow earths: Struan, Minor Dunrobin
 - Red earths: Dunrobin, Minor Struan, Annandale
- UNIFORM COARSE-TEXTURED SOILS**
- Petrona, Highmount, Minor Forrester, Annandale
- SHALLOW ROCKY SOILS**
- Rugby, Shotover, Minor Petrona
- MISCELLANEOUS LAND**
- Saline mud flats, Minor Broadmeadow, Taurus

This map is a scanned image and some detail may be illegible or lost. All rights are reserved and no part of this publication covered by copyright may be reproduced or copied in any form or by any means except with the written permission of CSIRO Division of Land and Water. To the extent permitted by law, CSIRO excludes all liability to any person or organisation for expenses, losses, liability and costs arising directly or indirectly from using this publication (in whole or in part) and any information or material contained in it. The publication must not be used as a means of endorsement without the prior written consent of CSIRO.