

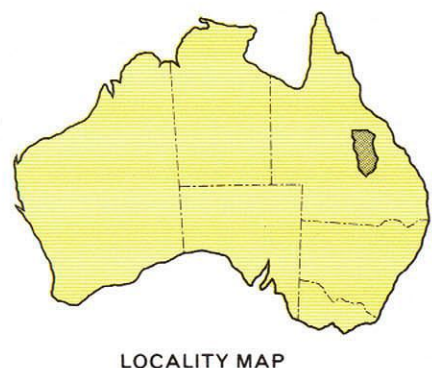
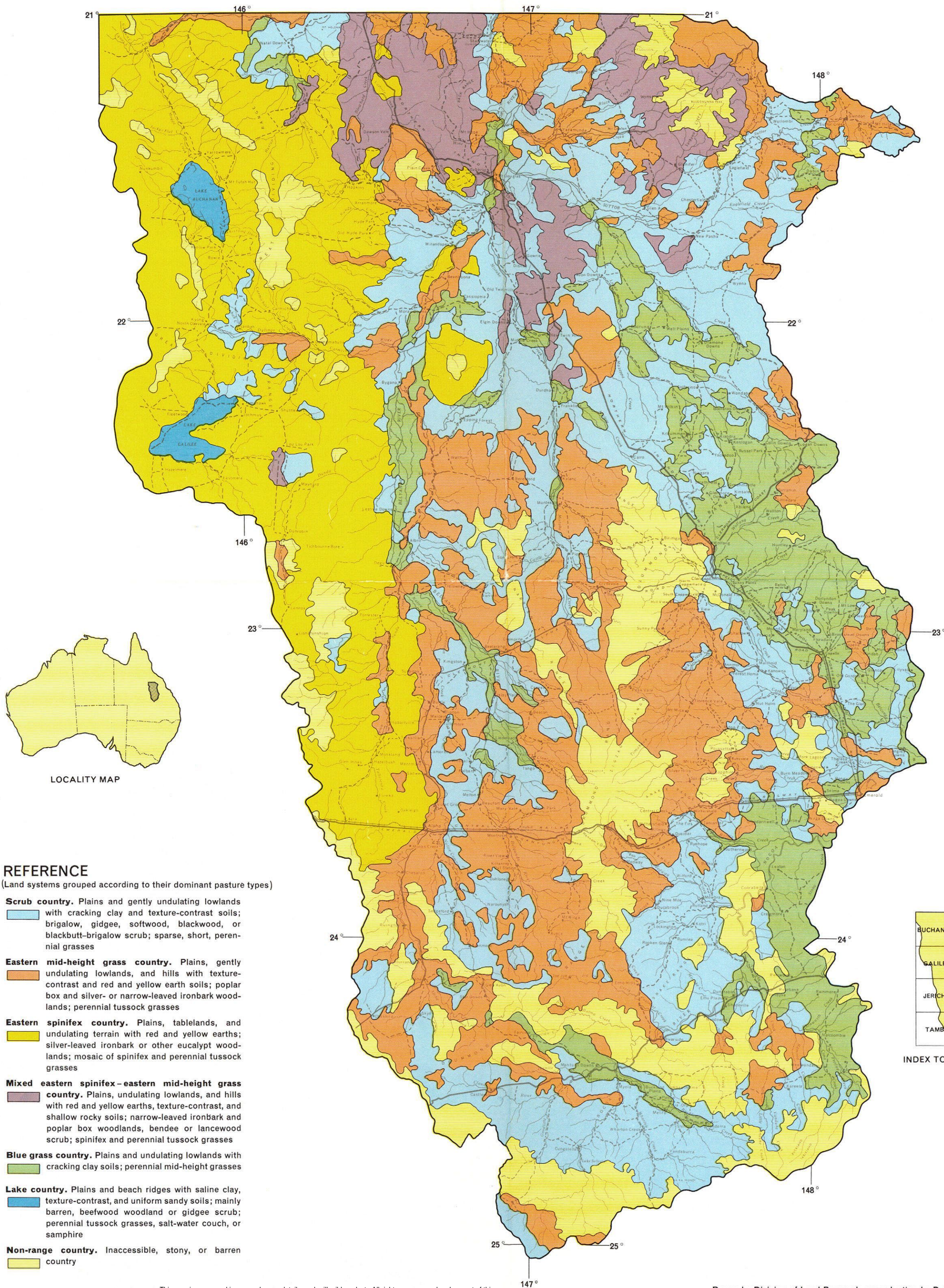
Conservation  
Research Branch  
Melers Rd.,  
Mooroopilly Q. 4088

DIVISION OF LAND RESEARCH  
COMMONWEALTH SCIENTIFIC AND INDUSTRIAL RESEARCH ORGANIZATION

# PASTURE LANDS OF THE NOGOA-BELYANDO AREA

QUEENSLAND AUSTRALIA

by L. Pedley



LOCALITY MAP

## REFERENCE

(Land systems grouped according to their dominant pasture types)

**Scrub country.** Plains and gently undulating lowlands with cracking clay and texture-contrast soils; brigalow, gidgee, softwood, blackwood, or blackbutt-brigalow scrub; sparse, short, perennial grasses

**Eastern mid-height grass country.** Plains, gently undulating lowlands, and hills with texture-contrast and red and yellow earth soils; poplar box and silver- or narrow-leaved ironbark woodlands; perennial tussock grasses

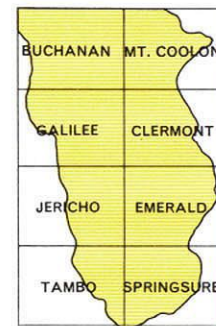
**Eastern spinifex country.** Plains, tablelands, and undulating terrain with red and yellow earths; silver-leaved ironbark or other eucalypt woodlands; mosaic of spinifex and perennial tussock grasses

**Mixed eastern spinifex-eastern mid-height grass country.** Plains, undulating lowlands, and hills with red and yellow earths, texture-contrast, and shallow rocky soils; narrow-leaved ironbark and poplar box woodlands, bendee or lancewood scrub; spinifex and perennial tussock grasses

**Blue grass country.** Plains and undulating lowlands with cracking clay soils; perennial mid-height grasses

**Lake country.** Plains and beach ridges with saline clay, texture-contrast, and uniform sandy soils; mainly barren, beefwood woodland or gidgee scrub; perennial tussock grasses, salt-water couch, or samphire

**Non-range country.** Inaccessible, stony, or barren country



INDEX TO 4 MILE SHEETS

This map is a scanned image and some detail may be illegible or lost. All rights are reserved and no part of this publication covered by copyright may be reproduced or copied in any form or by any means except with the written permission of CSIRO Division of Land and Water. To the extent permitted by law, CSIRO excludes all liability to any person or organisation for expenses, losses, liability and costs arising directly or indirectly from using this publication (in whole or in part) and any information or material contained in it. The publication must not be used as a means of endorsement without the prior written consent of CSIRO.