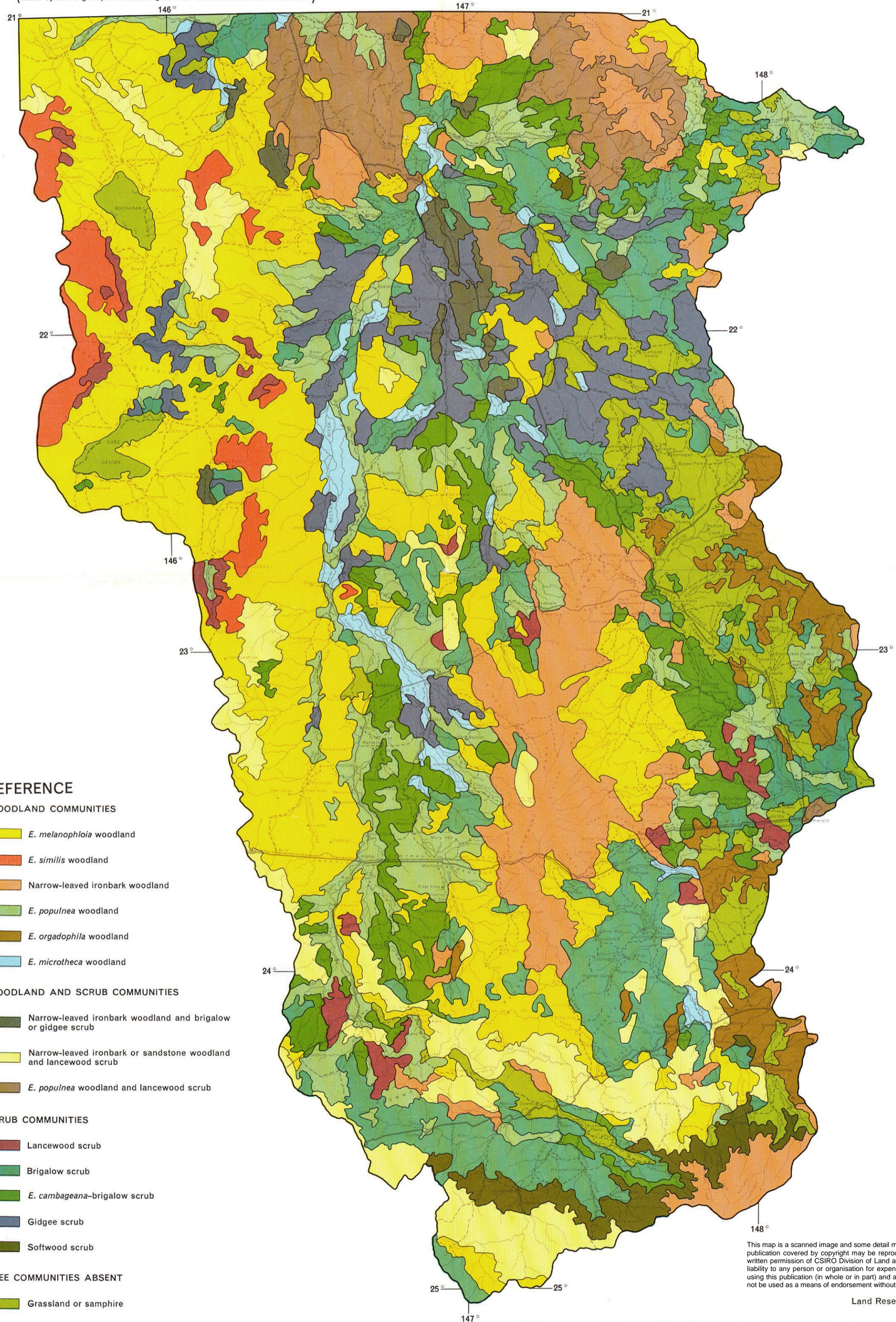


DIVISION OF LAND RESEARCH
 COMMONWEALTH SCIENTIFIC AND INDUSTRIAL RESEARCH ORGANIZATION
VEGETATION OF THE NOGOA-BELYANDO AREA
 QUEENSLAND AUSTRALIA

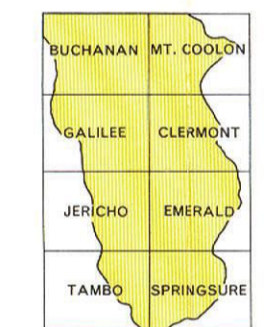
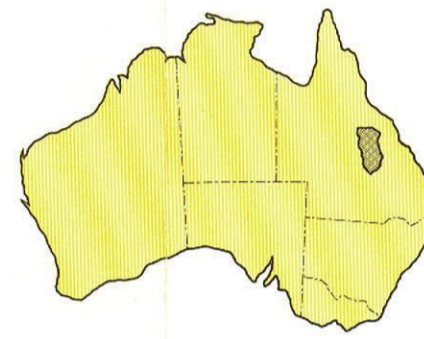
by L. Pedley
 0 16 32 48
 MILES

TREE COMMUNITIES
 (Land systems grouped according to their dominant tree communities)

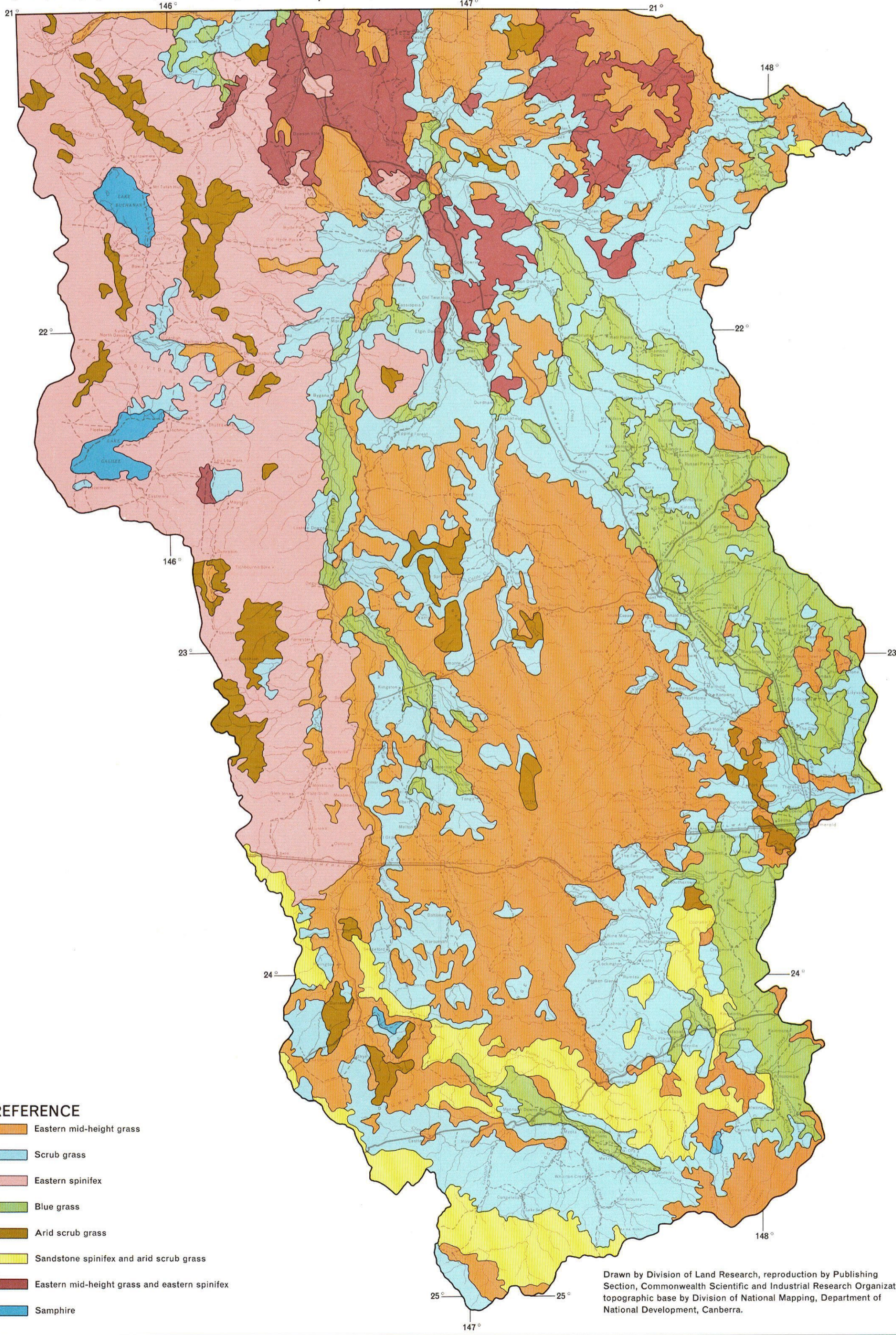
GRASS COMMUNITIES
 (Land systems grouped according to their dominant grass communities)



- REFERENCE**
- WOODLAND COMMUNITIES**
- E. melanophloia* woodland
 - E. similis* woodland
 - Narrow-leaved ironbark woodland
 - E. populnea* woodland
 - E. argaphila* woodland
 - E. microtheca* woodland
- WOODLAND AND SCRUB COMMUNITIES**
- Narrow-leaved ironbark woodland and brigalow or gidgee scrub
 - Narrow-leaved ironbark or sandstone woodland and lancewood scrub
 - E. populnea* woodland and lancewood scrub
- SCRUB COMMUNITIES**
- Lancewood scrub
 - Brigalow scrub
 - E. cambageana*-brigalow scrub
 - Gidgee scrub
 - Softwood scrub
- TREE COMMUNITIES ABSENT**
- Grassland or samphire



INDEX TO 4 MILE SHEETS



- REFERENCE**
- Eastern mid-height grass
 - Scrub grass
 - Eastern spinifex
 - Blue grass
 - Arid scrub grass
 - Sandstone spinifex and arid scrub grass
 - Eastern mid-height grass and eastern spinifex
 - Samphire

This map is a scanned image and some detail may be illegible or lost. All rights are reserved and no part of this publication covered by copyright may be reproduced or copied in any form or by any means except with the written permission of CSIRO Division of Land and Water. To the extent permitted by law, CSIRO excludes all liability to any person or organisation for expenses, losses, liability and costs arising directly or indirectly from using this publication (in whole or in part) and any information or material contained in it. The publication must not be used as a means of endorsement without the prior written consent of CSIRO.

Land Research Series No 18 1967

Drawn by Division of Land Research, reproduction by Publishing Section, Commonwealth Scientific and Industrial Research Organization; topographic base by Division of National Mapping, Department of National Development, Canberra.