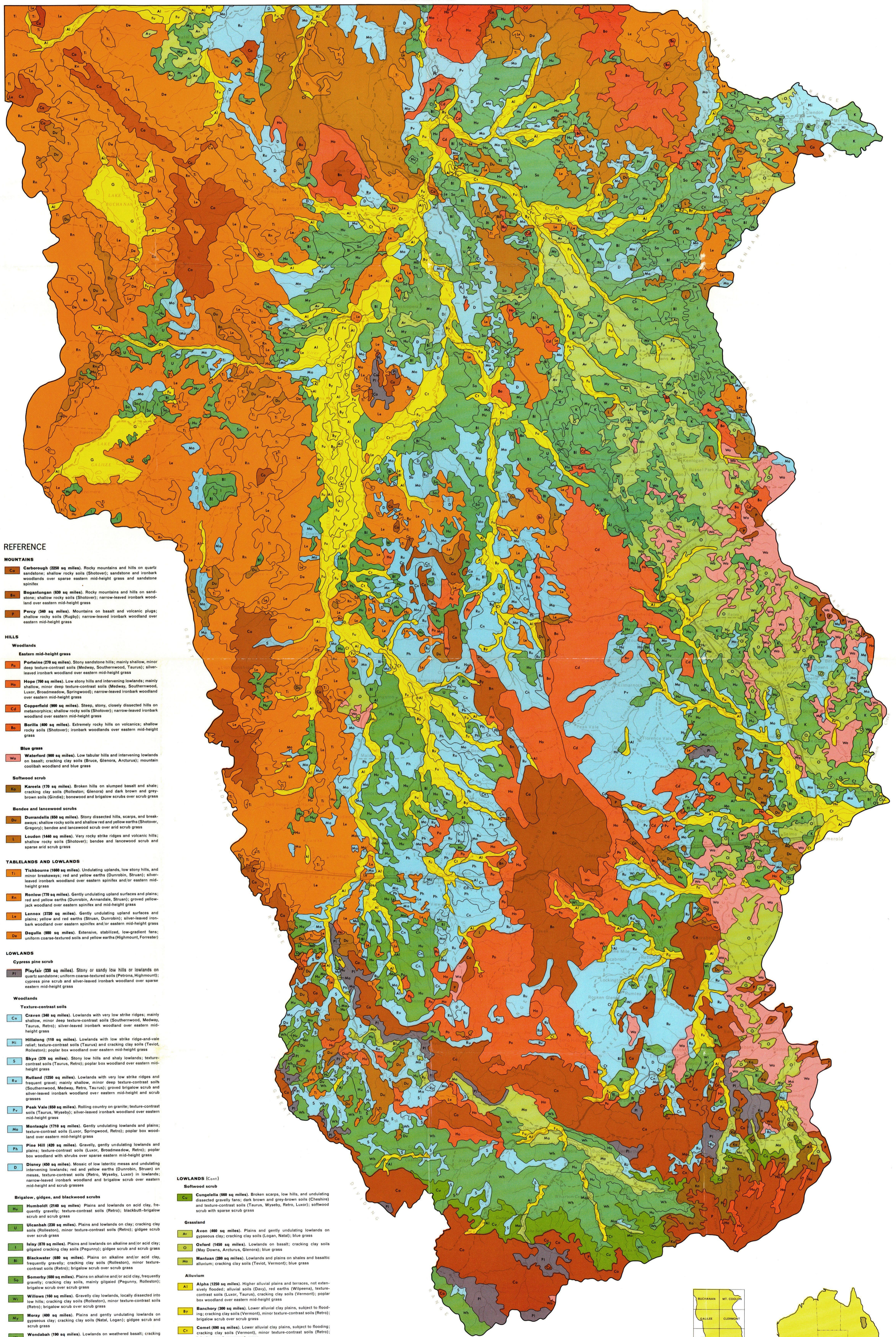
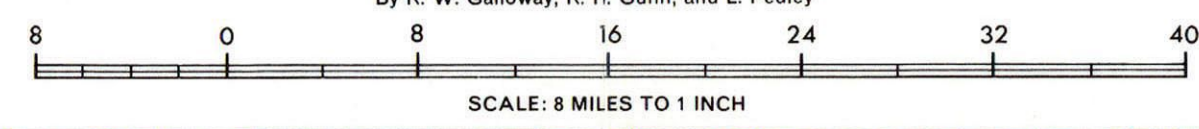


DIVISION OF LAND RESEARCH
COMMONWEALTH SCIENTIFIC AND INDUSTRIAL RESEARCH ORGANIZATION

LAND SYSTEMS OF THE NOGOA-BELYANDO AREA

QUEENSLAND AUSTRALIA

By R. W. Galloway, R. H. Gunn, and L. Peilley



REFERENCE

MOUNTAINS

- Cabersleigh (250 sq miles).** Rocky mountains and hills on quartz sandstone; shallow rocky soils (Shotover); sandstone and ironbark woodlands over sparse eastern mid-height grass and sandstone spinifex.
- Beganslungan (80 sq miles).** Rocky mountains and hills on sandstone; shallow rocky soils (Shotover); narrow-leaved ironbark woodland over eastern mid-height grass.
- Percy (30 sq miles).** Mountains on basalt and volcanic slugs; shallow rocky soils (Rugby); narrow-leaved ironbark woodland over eastern mid-height grass.

HILLS

- Woodlands**
- Eastern mid-height grass**
 - Portaine (270 sq miles).** Stony sandstone hills; mainly shallow, minor deep texture-contrast soils (Medway, Southernwood, Taurus); silver-leaved ironbark woodland over eastern mid-height grass.
 - Hope (700 sq miles).** Low stony hills and intervening lowlands; mainly shallow, minor deep texture-contrast soils (Medway, Southernwood, Luxor, Broadmeadow, Springwood); narrow-leaved ironbark woodland over eastern mid-height grass.
 - Copperfield (300 sq miles).** Steep, stony, closely dissected hills on metamorphic; shallow rocky soils (Shotover); narrow-leaved ironbark woodland over eastern mid-height grass.
 - Bortia (400 sq miles).** Extremely rocky hills on volcanic; shallow rocky soils (Shotover); ironbark woodlands over eastern mid-height grass.
- Blue grass**
- Waterford (300 sq miles).** Low tabular hills and intervening lowlands on basalt; cracking clay soils (Bruce, Glenora, Arcturus); mountain coolibah woodland and blue grass.
- Softwood scrub**
- Kareela (170 sq miles).** Broken hills on slumped basalt and shale; cracking clay soils (Rolliston, Glenora) and dark brown and grey-brown soils (Gindie); bonewood and brigalow scrubs over scrub grass.
- Bendee and lancewood scrubs**
- Durandella (500 sq miles).** Stony dissected hills, scarp, and breakaways; shallow rocky soils and shallow red and yellow earths (Shotover, Gregory); bendee and lancewood scrub over arid scrub grass.
 - Louden (1400 sq miles).** Very rocky strike ridges and volcanic hills; shallow rocky soils (Shotover); bendee and lancewood scrub and sparse arid scrub grass.

TABLELANDS AND LOWLANDS

- Titchborne (1600 sq miles).** Undulating uplands, low stony hills, and minor breakaways; red and yellow earths (Dunrobin, Struan); silver-leaved ironbark woodland over eastern spinifex and/or eastern mid-height grass.
- Reeslow (770 sq miles).** Gently undulating upland surfaces and plains; red and yellow earths (Dunrobin, Amundale, Struan); groved yellow-bark woodland over eastern spinifex and mid-height grass.
- Lennox (3700 sq miles).** Gently undulating upland surfaces and plains; yellow and red earths (Struan, Dunrobin); silver-leaved ironbark woodland over eastern spinifex and/or eastern mid-height grass.
- Dequila (300 sq miles).** Extensive, stabilized, low-gradient fans; uniform coarse-textured soils and yellow earths (Highmount, Forrester).

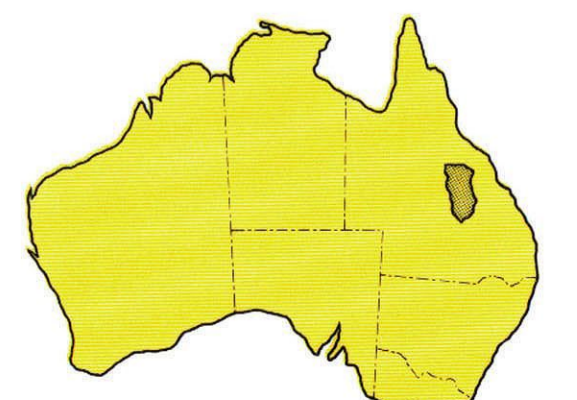
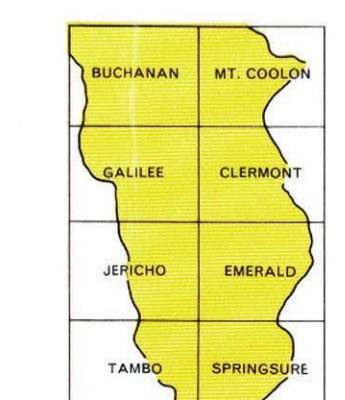
LOWLANDS

- Cypress pine scrub**
- Playfair (350 sq miles).** Slopy or sandy low hills or lowlands on quartz sandstone; uniform coarse-textured soils (Petina, Highmount); cypress pine scrub and silver-leaved ironbark woodland over sparse eastern mid-height grass.
- Woodlands**
- Texture-contrast soils**
- Craven (340 sq miles).** Lowlands with very low strike ridges; mainly shallow, minor deep texture-contrast soils (Southernwood, Medway, Taurus, Retro); silver-leaved ironbark woodland over eastern mid-height grass.
 - Hillalong (110 sq miles).** Lowlands with low strike ridge-and-valley relief; texture-contrast soils (Taurus) and cracking clay soils (Teviot, Rolliston); poplar box woodland over eastern mid-height grass.
 - Skye (770 sq miles).** Stony low hills and shaly lowlands; texture-contrast soils (Taurus, Retro); poplar box woodland over eastern mid-height grass.
 - Rutland (1250 sq miles).** Lowlands with very low strike ridges and frequent gravel; mainly shallow, minor deep texture-contrast soils (Southernwood, Medway, Retro, Taurus); groved brigalow scrub and silver-leaved ironbark woodland over eastern mid-height and scrub grasses.
 - Peak Vale (600 sq miles).** Rolling country on granite; texture-contrast soils (Taurus, Wyseby); silver-leaved ironbark woodland over eastern mid-height grass.
 - Monteagle (1710 sq miles).** Gently undulating lowlands and plains; texture-contrast soils (Luxor, Springwood, Retro); poplar box woodland over eastern mid-height grass.
 - Pine Hill (420 sq miles).** Gravelly, gently undulating lowlands and plains; texture-contrast soils (Luxor, Broadmeadow, Retro); poplar box woodland with shrubs over sparse eastern mid-height grass.
 - Disney (450 sq miles).** Mosaic of low lateritic mesas and undulating intervening lowlands; red and yellow earths (Dunrobin, Struan) on mesas, texture-contrast soils (Retro, Wyseby, Luxor) in lowlands; narrow-leaved ironbark woodland and brigalow scrub over eastern mid-height and scrub grasses.

- Brigalow, gidgee, and blackwood scrubs**
- Humboldt (2140 sq miles).** Plains and lowlands on acid clay, frequently gravelly; texture-contrast soils (Retro); blackbottle-brigalow scrub and scrub grass.
 - Ulcumbah (230 sq miles).** Plains and lowlands on clay; cracking clay soils (Rolliston), minor texture-contrast soils (Retro); gidgee scrub over scrub grass.
 - Maly (370 sq miles).** Plains and lowlands on alkaline and/or acid clay; gidgee cracking clay soils (Pegunny); gidgee scrub and scrub grass.
 - Blackwater (800 sq miles).** Plains on alkaline and/or acid clay, frequently gravelly; cracking clay soils (Rolliston); minor texture-contrast soils (Retro); brigalow scrub over scrub grass.
 - Somerby (500 sq miles).** Plains on alkaline and/or acid clay, frequently gravelly; cracking clay soils, mainly gidgee (Pegunny, Rolliston); brigalow scrub over scrub grass.
 - Willows (100 sq miles).** Lowlands on lowlands, locally dissected into low hills; cracking clay soils (Rolliston), minor texture-contrast soils (Retro); brigalow scrub over scrub grass.
 - Maray (300 sq miles).** Plains and gently undulating lowlands on gypstone clay; cracking clay soils (Nate, Logan); gidgee scrub and scrub grass.
 - Woodbah (190 sq miles).** Lowlands on weathered basalt; cracking clay soils (Glenora); gidgee scrub over sparse scrub grass.
 - Kinlock (300 sq miles).** Lowlands on weathered basalt; cracking clay soils (Rolliston, May Downs); brigalow scrub over sparse scrub grass.
 - Wharton (830 sq miles).** Undulating shaly lowlands, gravelly in places; dark brown and grey-brown soils (Cheahna), cracking clay, and texture-contrast soils (Rolliston, Retro); brigalow-widgee scrub over scrub grass.

LOWLANDS (Cont.)

- Softwood scrub**
- Cungella (600 sq miles).** Broken scarp, low hills, and undulating dissected gravelly fans; dark brown and grey-brown soils (Cheahna) and texture-contrast soils (Taurus, Wyseby, Retro, Luxor); softwood scrub with sparse scrub grass.
- Grassland**
- Avon (400 sq miles).** Plains and gently undulating lowlands on gypstone clay; cracking clay soils (Logan, Nate); blue grass.
 - Oxfort (1400 sq miles).** Lowlands on basalt; cracking clay soils (May Downs, Arcturus, Glenora); blue grass.
 - Mantuan (200 sq miles).** Lowlands on shales and basaltic alluvium; cracking clay soils (Teviot, Vermont); blue grass.
- Alluvium**
- Alpha (1200 sq miles).** Higher alluvial plains and terraces, not extensively flooded; alluvial soils (Dary), red earths (Wilpenna), texture-contrast soils (Luxor, Taurus), cracking clay soils (Vermont); poplar box woodland over eastern mid-height grass.
 - Banchory (300 sq miles).** Lower alluvial clay plains, subject to flooding; cracking clay soils (Vermont), minor texture-contrast soils (Retro); brigalow scrub over scrub grass.
 - Comel (600 sq miles).** Lower alluvial clay plains, subject to flooding; cracking clay soils (Vermont), minor texture-contrast soils (Retro); brigalow scrub over scrub grass.
 - Funnel (1000 sq miles).** Lower alluvial clay plains, subject to flooding; cracking clay soils (Vermont); coolibah grassy woodland with blue grass.
 - Galleon (100 sq miles).** Floors of intermittent lakes, marginally sandy and silty beach features; saline clay flats; barren inner floors, samphire on outer floors, and Grevillea woodland on beach ridges.



This map is a scanned image and some detail may be illegible or lost. All rights are reserved and no part of this publication covered by copyright may be reproduced or stored in a retrieval system without the written permission of CSIRO Division of Land and Water. To the extent permitted by law, CSIRO excludes all liability in whole or in part and any information or advice contained in it. The publication may not be used as a means of diagnosis without the prior approval of CSIRO.

Land Research Series No 18192

Drawn by Division of Land Research, Commonwealth Scientific and Industrial Research Organization; topographic base by Division of National Mapping, Department of National Development, Canberra.