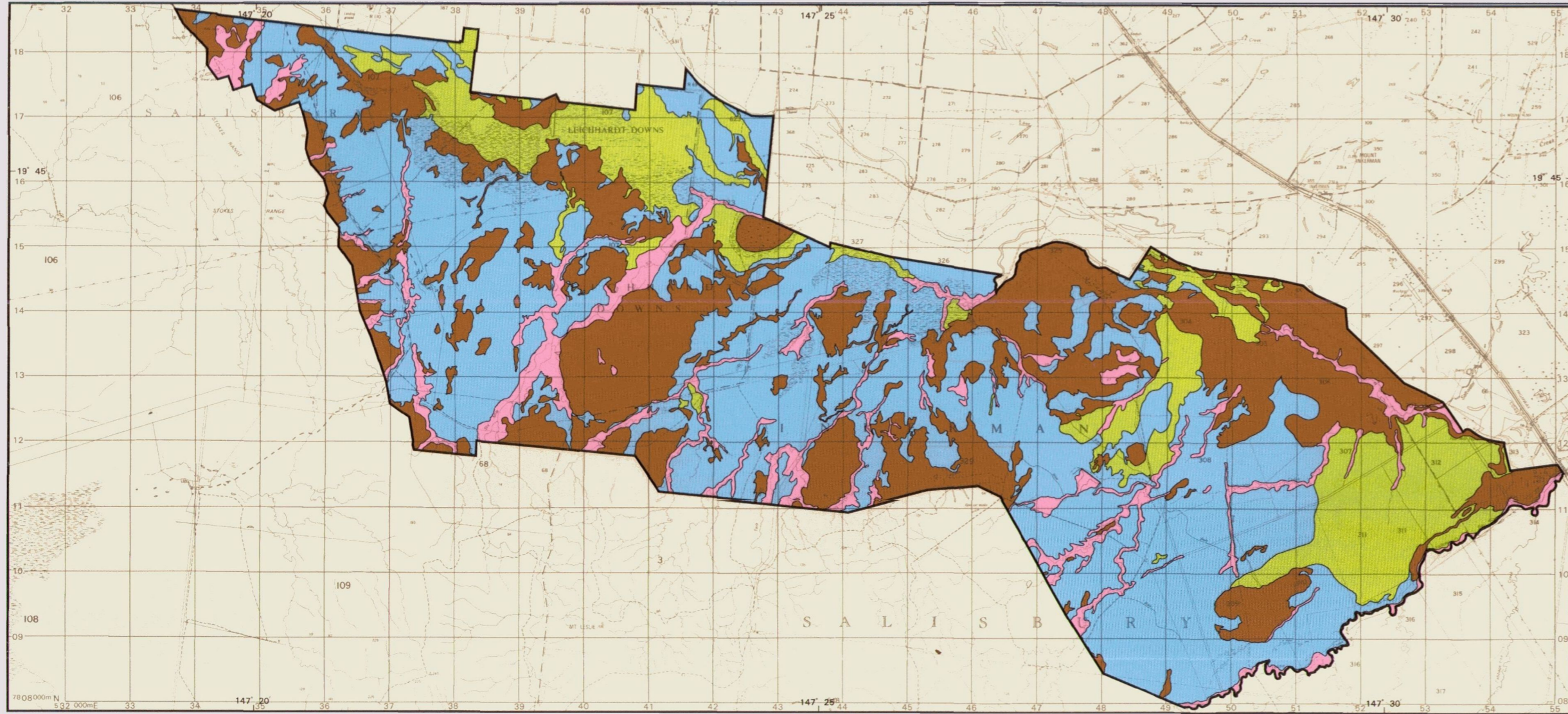
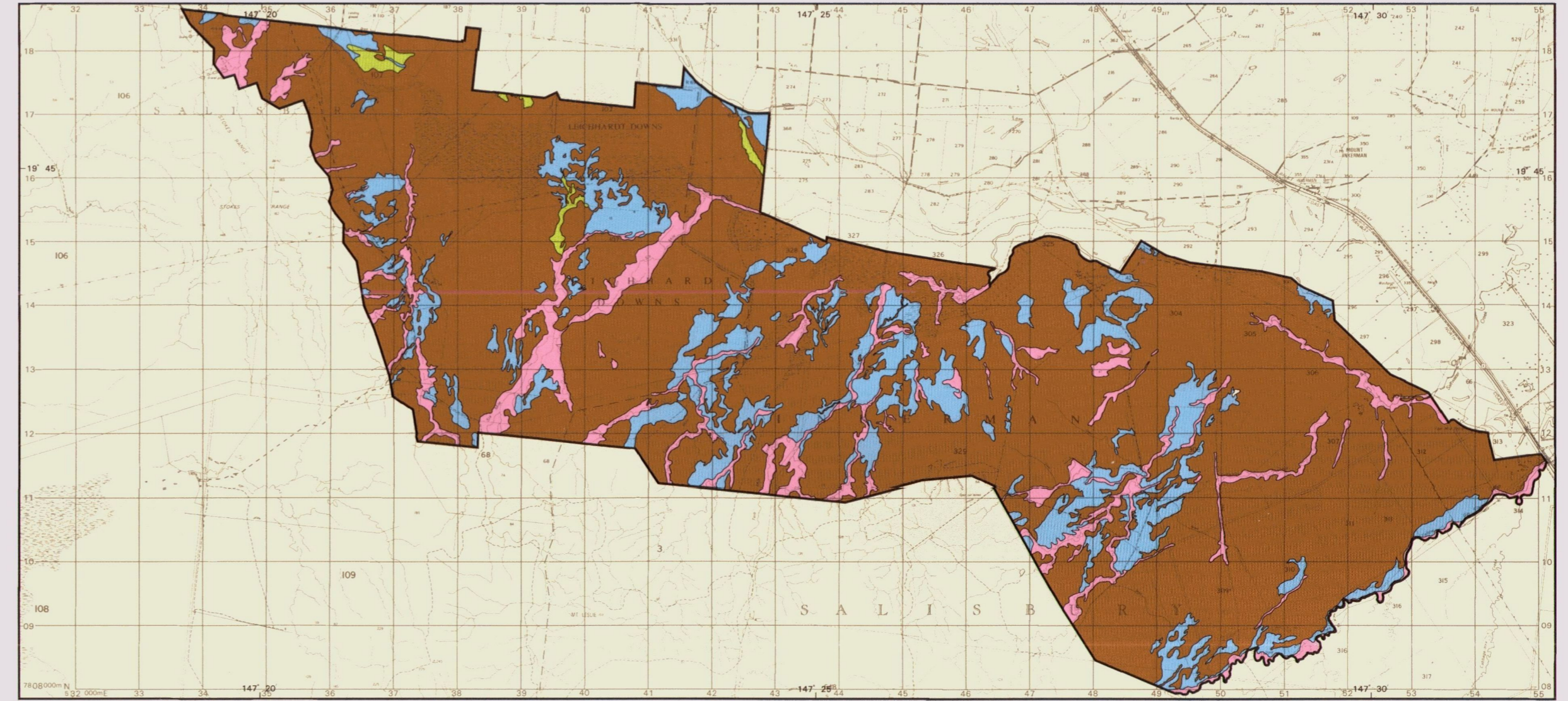


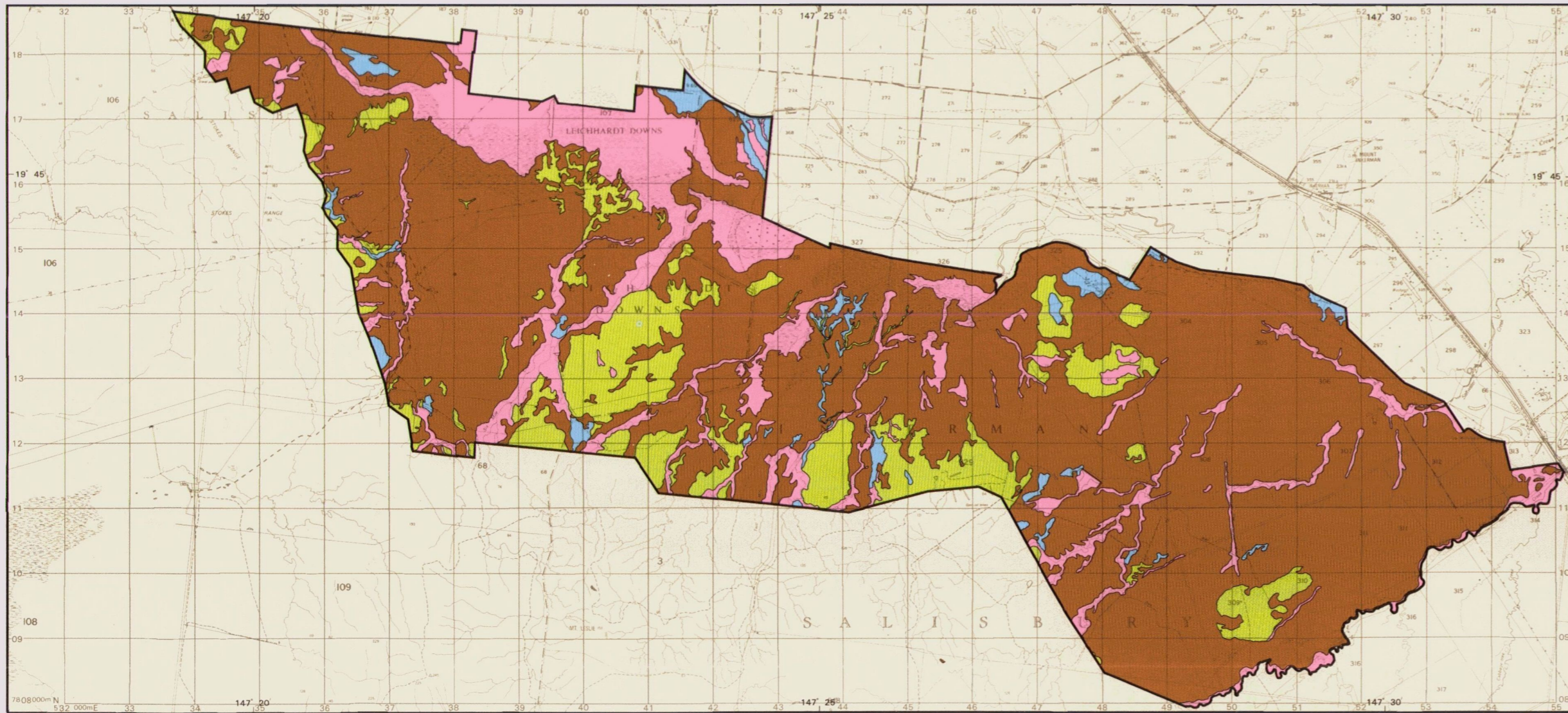
**FURROW IRRIGATION OF SUGAR-CANE**



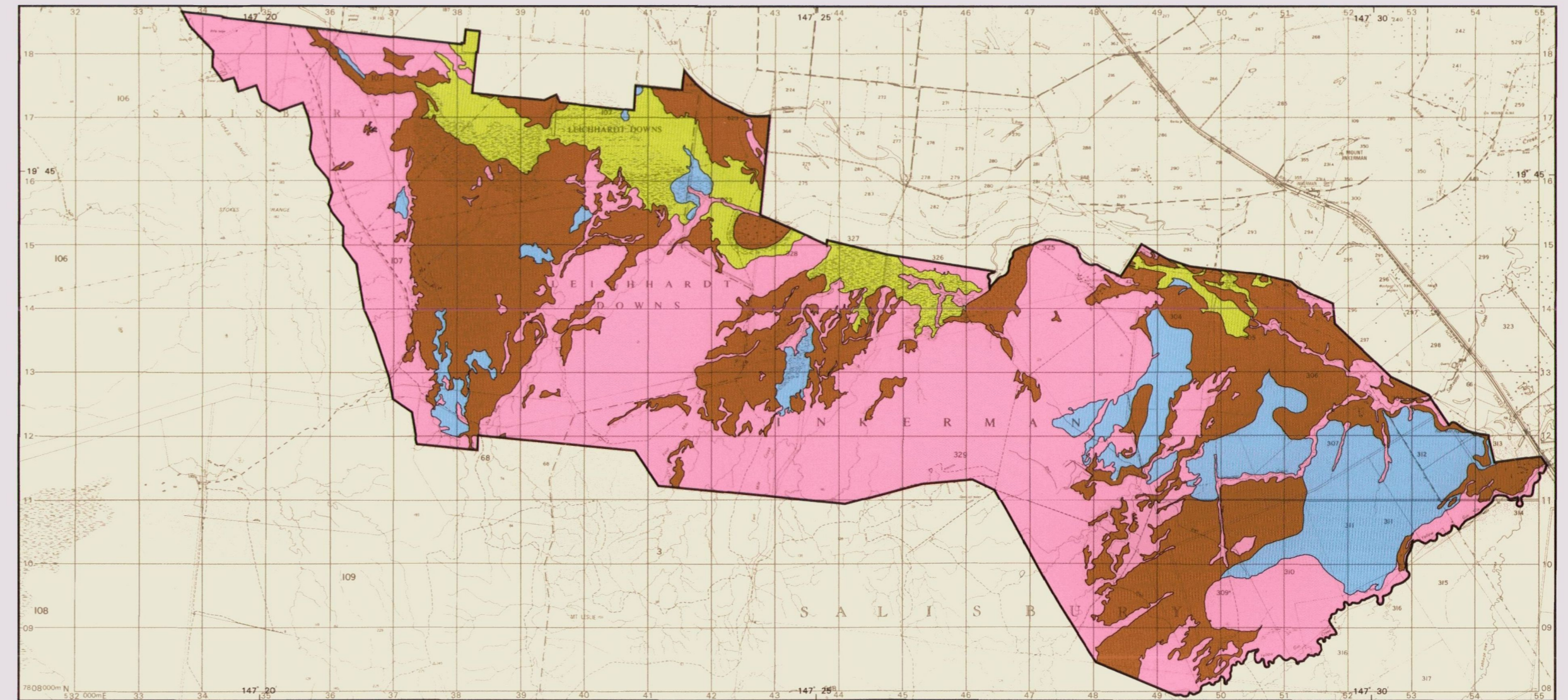
**FURROW IRRIGATION OF CAPSICUMS**



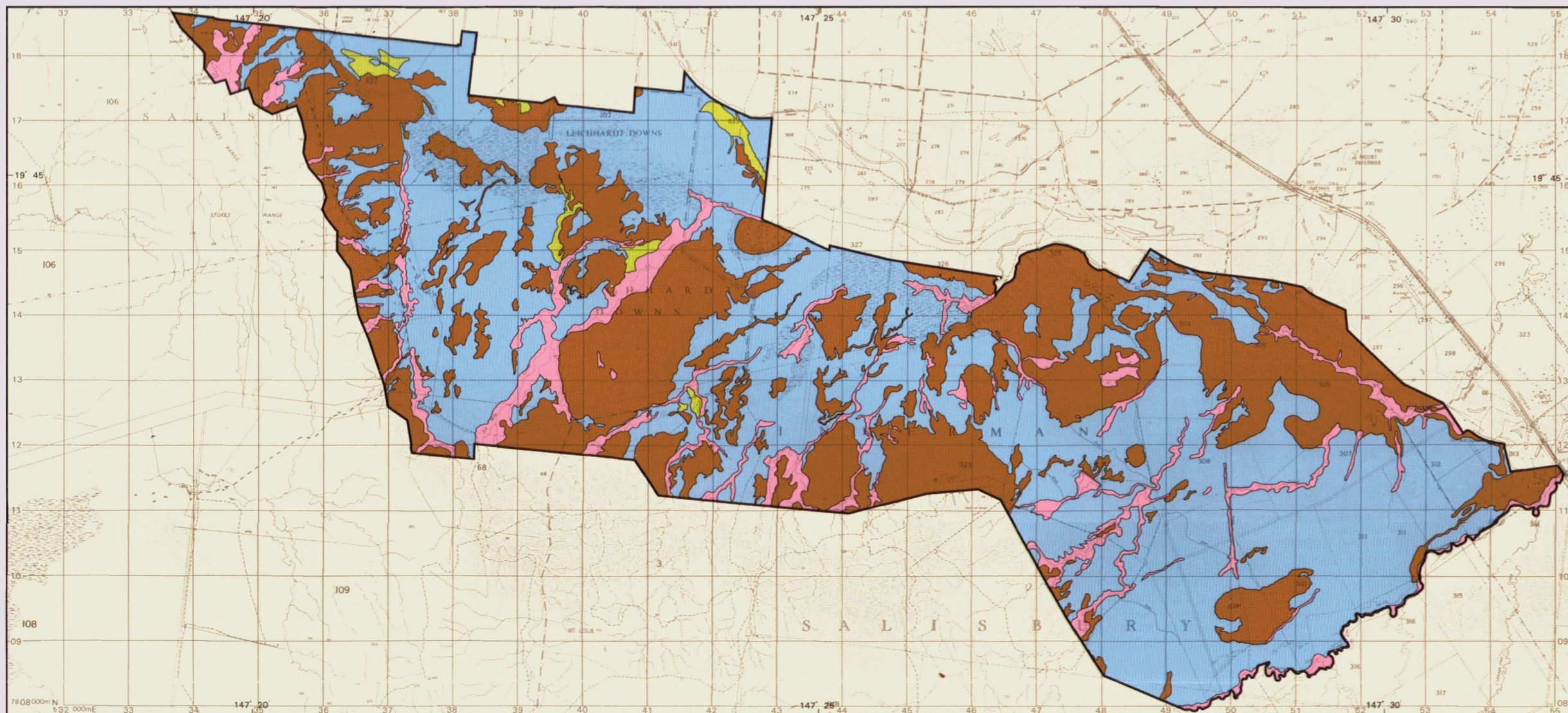
**LOW VOLUME IRRIGATION OF MANGOES**



**RICE**



**FURROW IRRIGATION OF MAIZE**



**DPI DEPARTMENT OF  
PRIMARY INDUSTRIES  
LANDS AND FISHERIES**

**BURDEKIN RIVER IRRIGATION AREA  
INKERMAN WEST AND CENTRAL SECTIONS  
LAND SUITABILITY**

SCALE 1 : 75 000

metres 0 2 4 6 kilometres

GREY NUMBERED GRID LINES ARE 1000 METRE INTERVALS OF THE AUSTRALIAN MAP GRID, ZONE 55  
GRID VALUES ARE SHOWN IN FULL AT THE SOUTH WEST CORNER OF THE MAP  
Transverse Mercator Projection

**INTENSITY STATEMENT**

This assessment uses the results of a high intensity soil survey. The soil survey was based on aerial photograph interpretation and ground observations of the order of one observation to an area of 5 - 6 hectares.

**REFERENCE**

- Class 1 Suitable land with negligible limitations
- Class 2 Suitable land with slight limitations
- Class 3 Suitable land with moderate limitations
- Class 4 Marginal land - presently unsuitable
- Class 5 Unsuitable land

**DISCLAIMER:**

This is a scanned image and some detail may be illegible or lost. While every care is taken to ensure the accuracy of this product, the Department of Natural Resources and Mines makes no representations or warranties about its accuracy, reliability, completeness or suitability for any particular purpose and disclaims all responsibility and all liability (including without limitation, liability in negligence) for all expenses, losses, damages (including indirect or consequential damage) and costs which you might incur as a result of the product being inaccurate or incomplete in any way for any reason.

**NOTE**

Land is classified on the basis of a specified land use which allows optimum production with minimal degradation to the land resource in the long term. Current technology and management are assumed and the land was assessed as it was found at the time of the survey.

ASSESSMENT by T. E. Donnellan, Land Management Division, Department of Primary Industries, Ayr.

CARTOGRAPHY by M. J. Bryant, Land Management Division, Department of Primary Industries, Brisbane.

BASE MAP compiled from the 1 : 25 000 Topographic Series supplied by the Department of Lands, Brisbane.

PRINTED by GOPRINT, Brisbane, 1994.

© the State of Queensland, Department of Primary Industries, 1994.