

NOTICE TO MARINERS



210 (T) of 2025

Issued by Gladstone Maritime Region on 22 May 2025

Area: Capricorn Coast
Locality: Shoalwater Bay, Double Rock area
Activity: survey operations using uncrewed surface vessels

Mariners are advised that:

Offshore survey operations using remotely piloted Uncrewed Surface Vessels (USVs), are currently underway within the area shown on the attached chartlet until Tuesday, 27 May 2025. The USVs are engaged in survey activities as part of a local geography survey.

The USV superstructure is painted yellow, has an active radar reflector installed, is fitted with navigational lights, sound signal, VHF and AIS.

Mariners are to avoid contact with the vessel and be aware of the operational area during this period.

The support vessel 'Toanui' will escort the USVs in the nearshore area and will remain moored near the operational area of the USVs for the duration of the survey. On completion, 'Toanui' will escort the vessels to Yeppoon for recovery.

A Tide Gauge Buoy and Current Profiler Buoy have been deployed in the vicinity of Double Rock as shown on the attached chartlet. Buoys are fitted with a yellow flashing light with a flash rate of two seconds.

An operational area chart is attached to this NtM.

Refer to notice: none

Cancel notice: 186(T) of 2025

AUS charts affected: AUS820

ENC Cells affected: AU5PCL01

Latitude and longitude positions are on WGS84 horizontal datum and are compatible with GDA2020 datum.

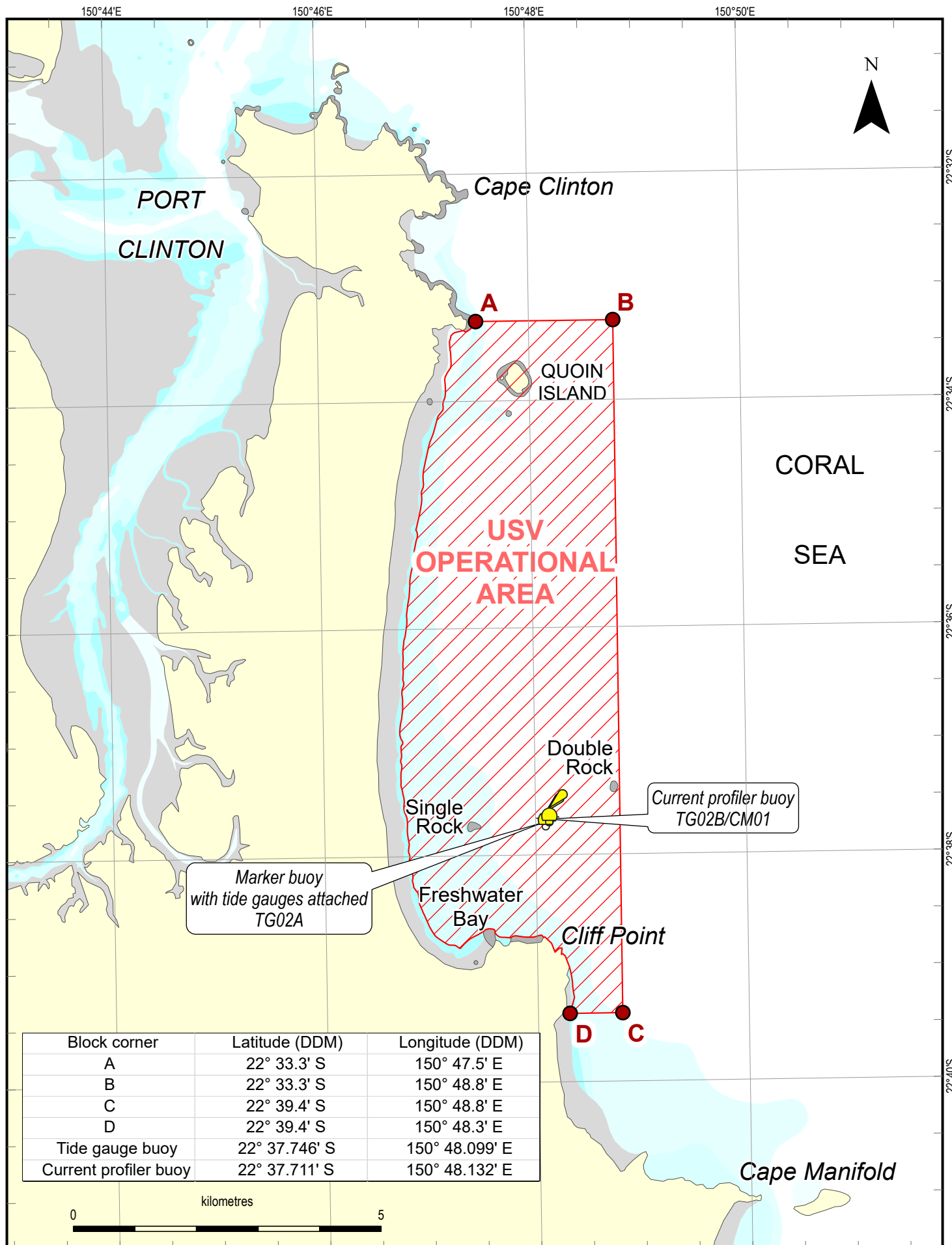
For further information about this notice, please contact:

The Gladstone Regional Harbour Master's office:

Phone 07 4839 0208

Email: vtsgladstone@msq.qld.gov.au

Notice authorised by: Regional Harbour Master (Gladstone) - Maritime Safety Queensland



To be used with appropriate NTM
 © The State of Queensland 2025
 Transport and Main Roads



Prepared 22 May 2025
 Maritime Safety Queensland
 Port Operations and VTS - Spatial Services

QUEENSLAND NOTICE TO MARINERS

Issued by Maritime Safety Queensland

USV offshore survey area
Freshwater Bay - near Double Rock
15 - 27 May 2025

QNTM updates also available
 from www.msq.qld.gov.au
 Datum: GDA2020 horizontal. LAT vertical
 Map projection: UTM (MGA zone 56)

Map S11-727-2



Queensland
 Government