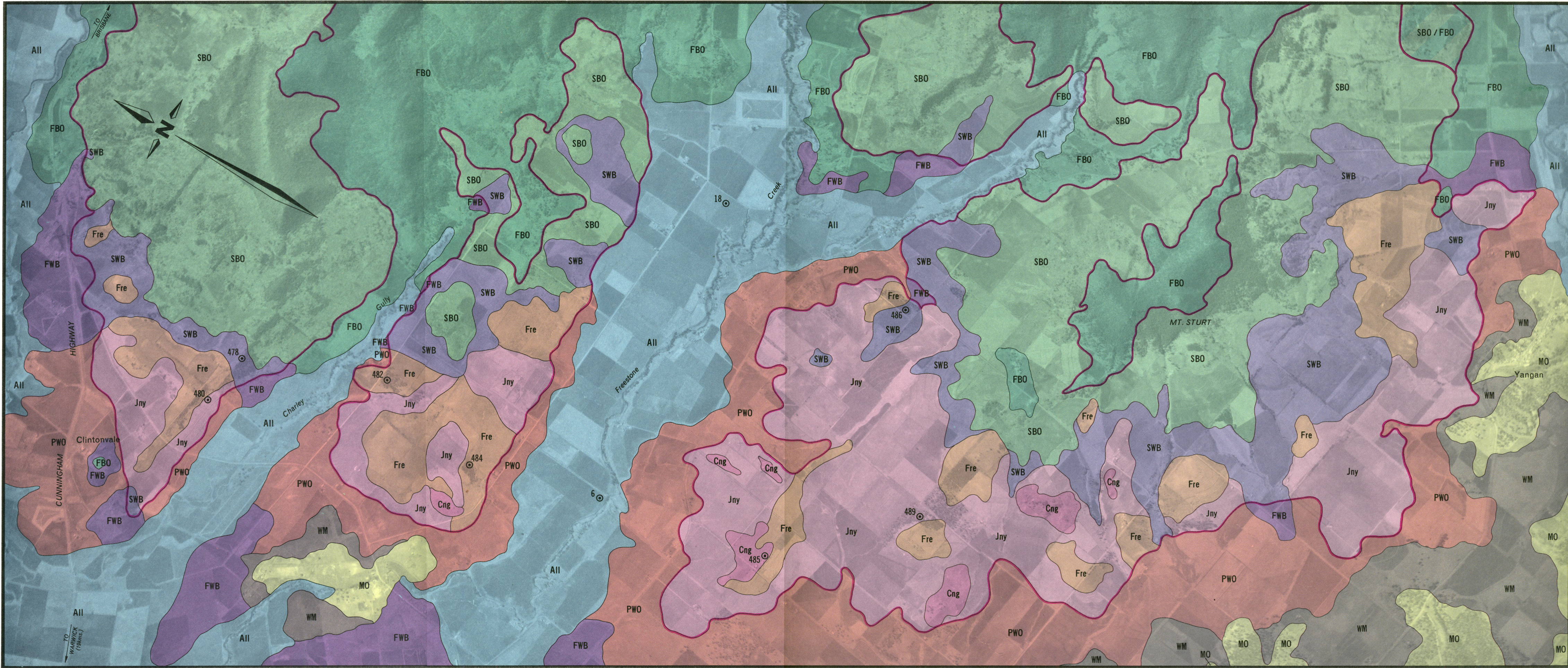


DISCLAIMER
This is a scanned image and some detail may be illegible or lost. While every care has been taken to ensure the accuracy of this product, the Department of Natural Resources and Water makes no representations or warranties about its accuracy, reliability, completeness or suitability for any particular purpose and disclaims all responsibility and all liability (including without limitation liability in negligence) for all expenses, losses, damages (including indirect or consequential damage) and costs which you might incur as a result of the product being inaccurate or incomplete in any way for any reason.



LEGEND

SOILS DERIVED FROM WALLOON COAL MEASURES - SOFTWOOD SCRUB

- Jny Jingarry clay - linear gilgai complex
- Fre Freestone clay
- Cng Canning clay

- 484 Reference site 484
- Scrub / Forest boundary

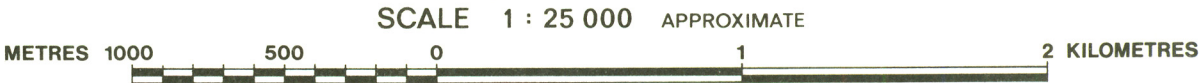
OTHER SOILS (not differentiated into soil series)

- PWO Soils derived from Walloon Coal Measures (poplar box)
- AII Soils derived from Alluvia
- SBO Soils derived from Basalt (scrub)
- FBO Soils derived from Basalt (forest)
- SWB Soils derived from Basalt and Walloon Coal Measures (scrub)
- FWB Soils derived from Basalt and Walloon Coal Measures (forest)
- MO Soils derived from Marburg Formation
- WM Soils derived from Marburg Formation and Walloon Coal Measures



QUEENSLAND
DEPARTMENT OF PRIMARY INDUSTRIES
SCRUB WALLOONS REPRESENTATIVE AREA
FREESTONE - DARLING DOWNS
SOIL SERIES

by F.R. McKeown



Drawn by P.Zande and S. Wallace

PREPARED by: the Division of Land Utilisation, Queensland Department of Primary Industries.
BASE: is an uncontrolled mosaic covering part of 1:100 000 area of Warwick flown June 1974.
PRINTED by: the Government Printer, Brisbane, 1979.