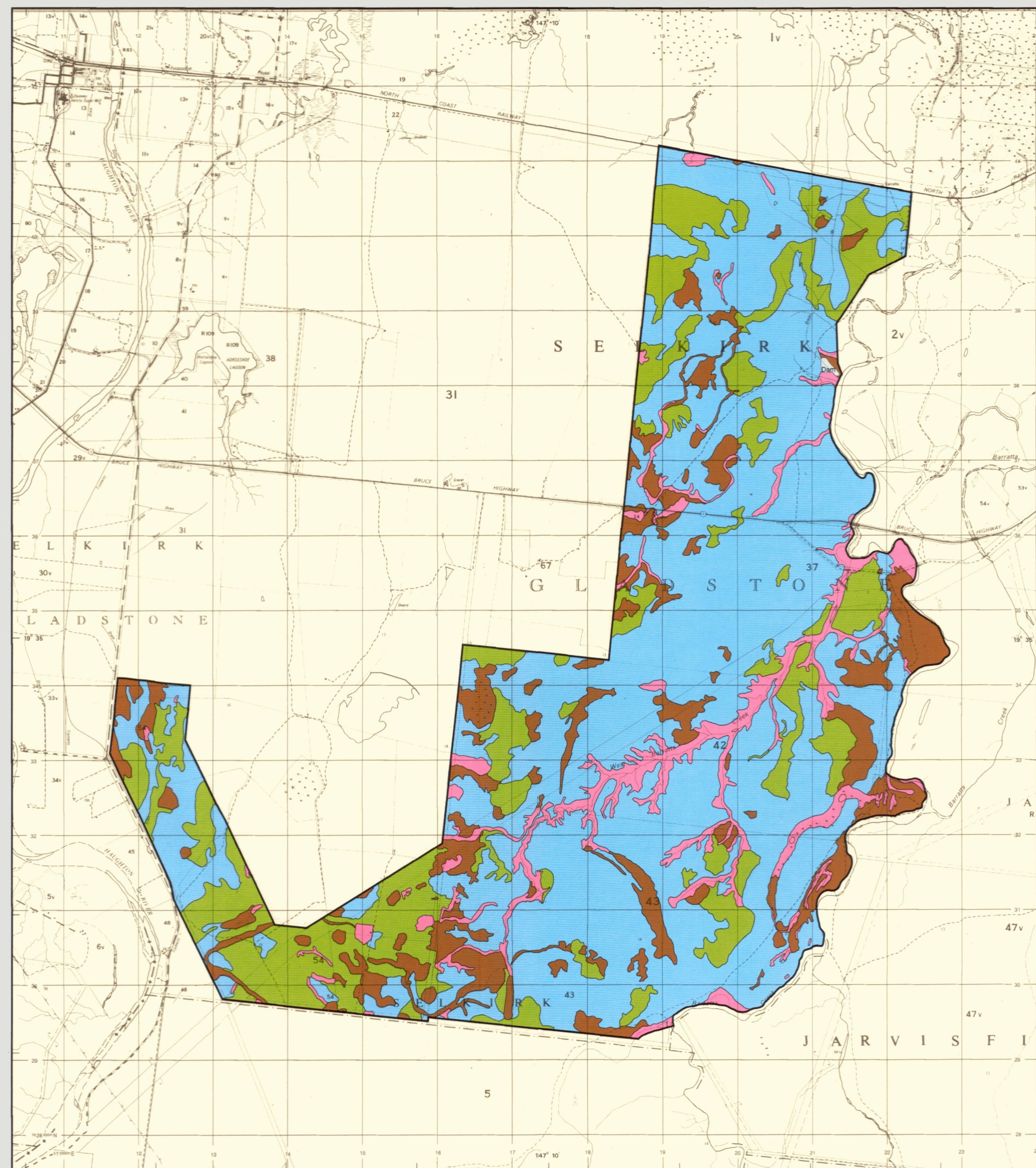
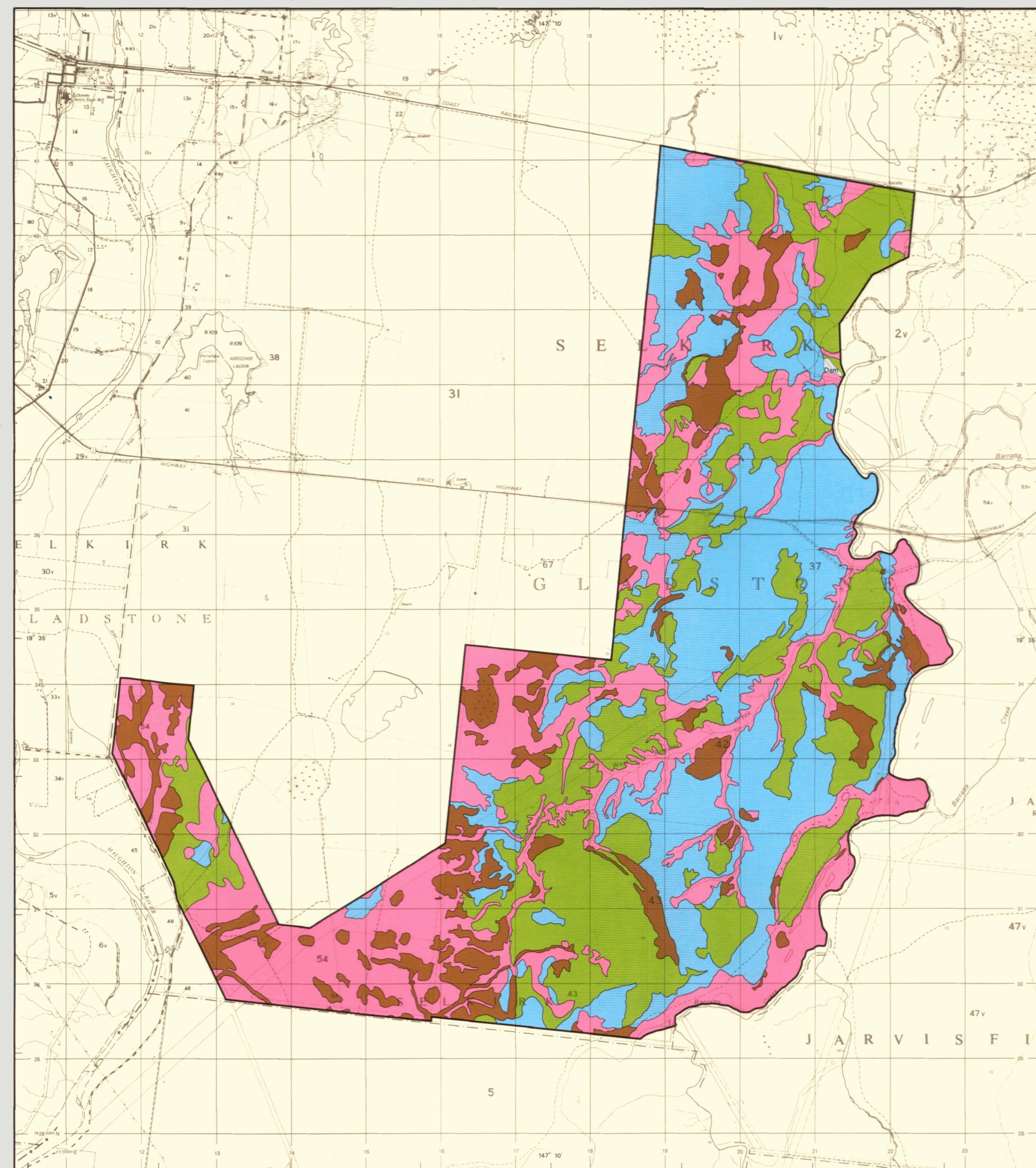


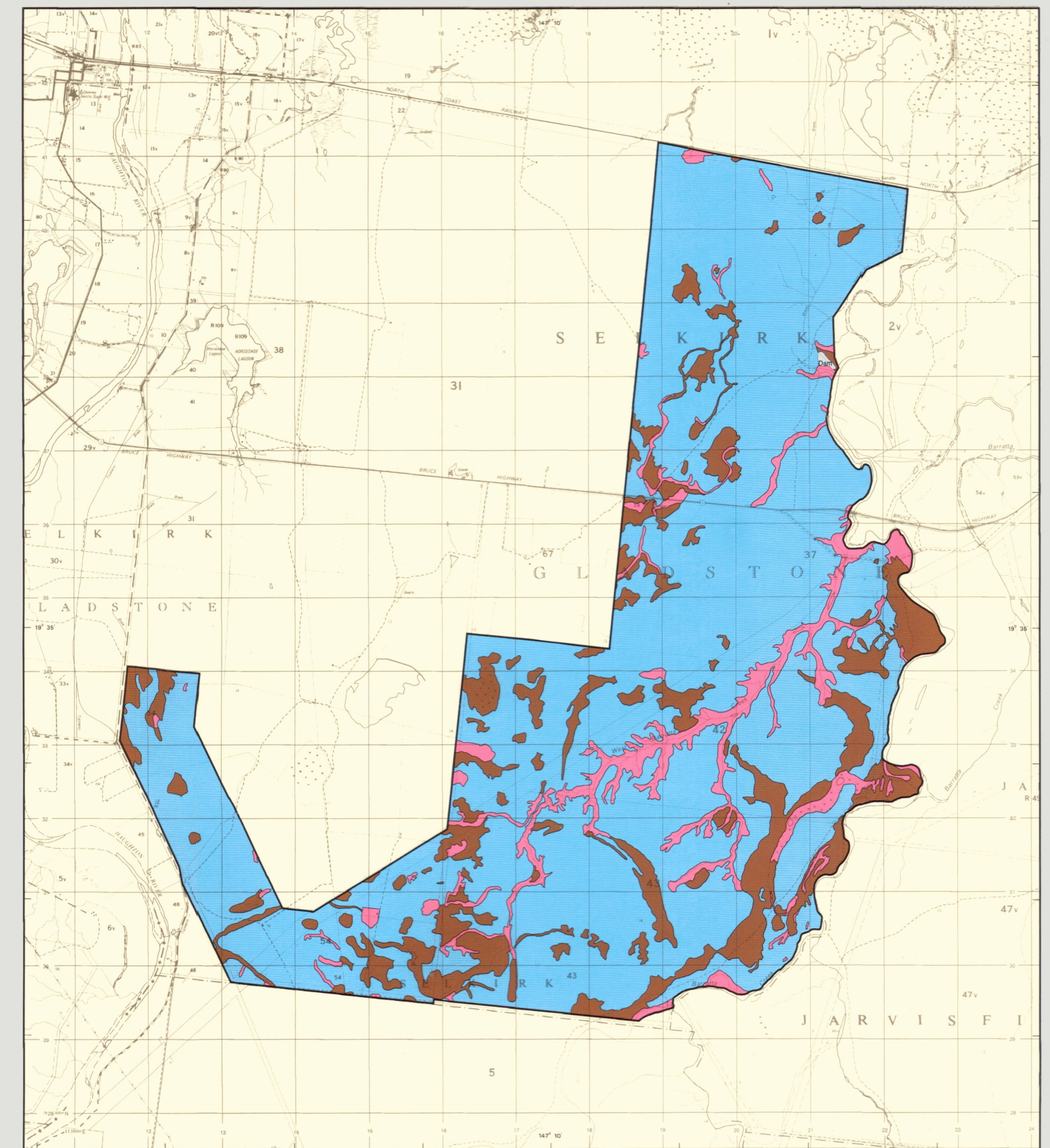
FURROW IRRIGATION OF SUGAR-CANE



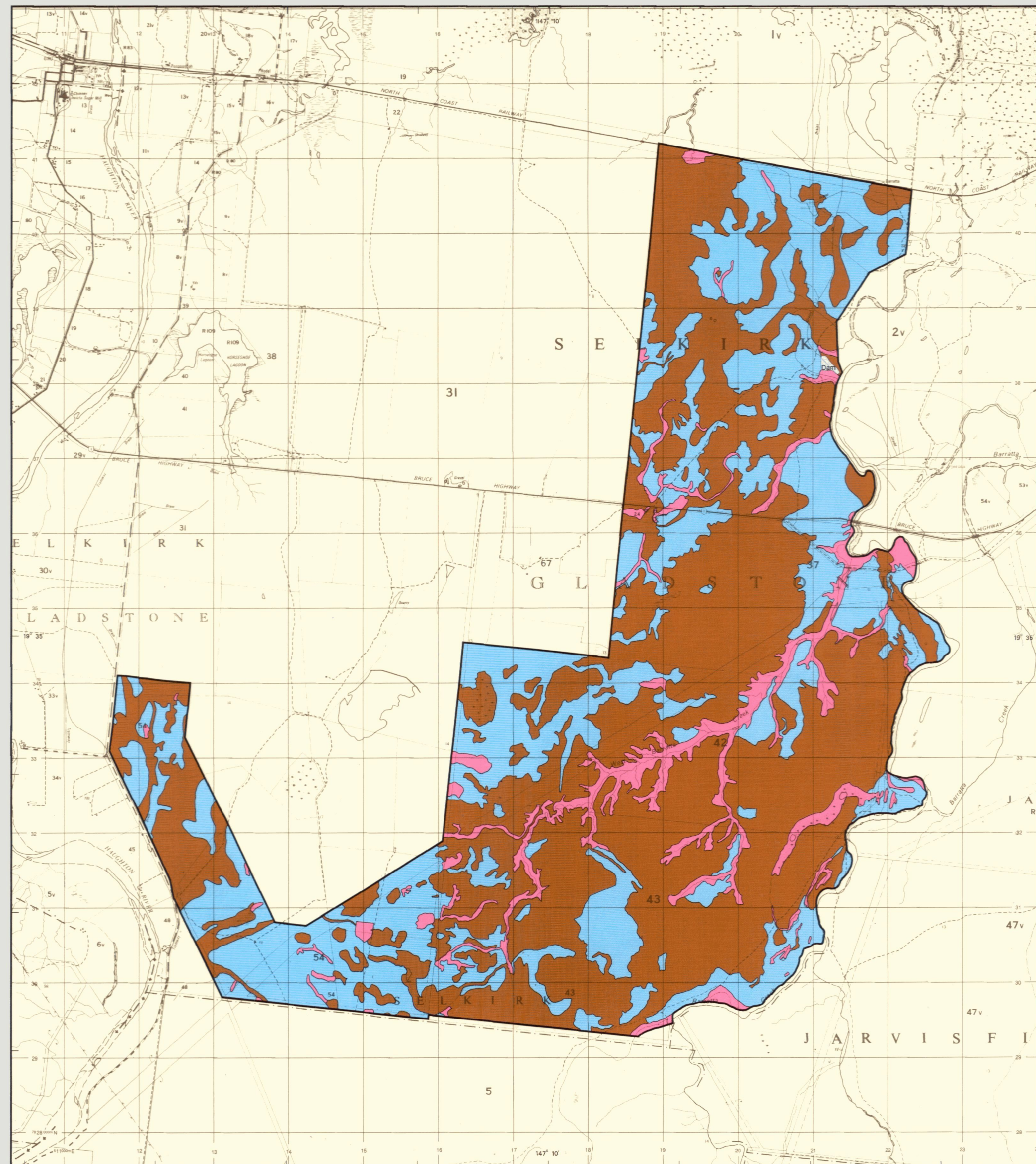
RICE



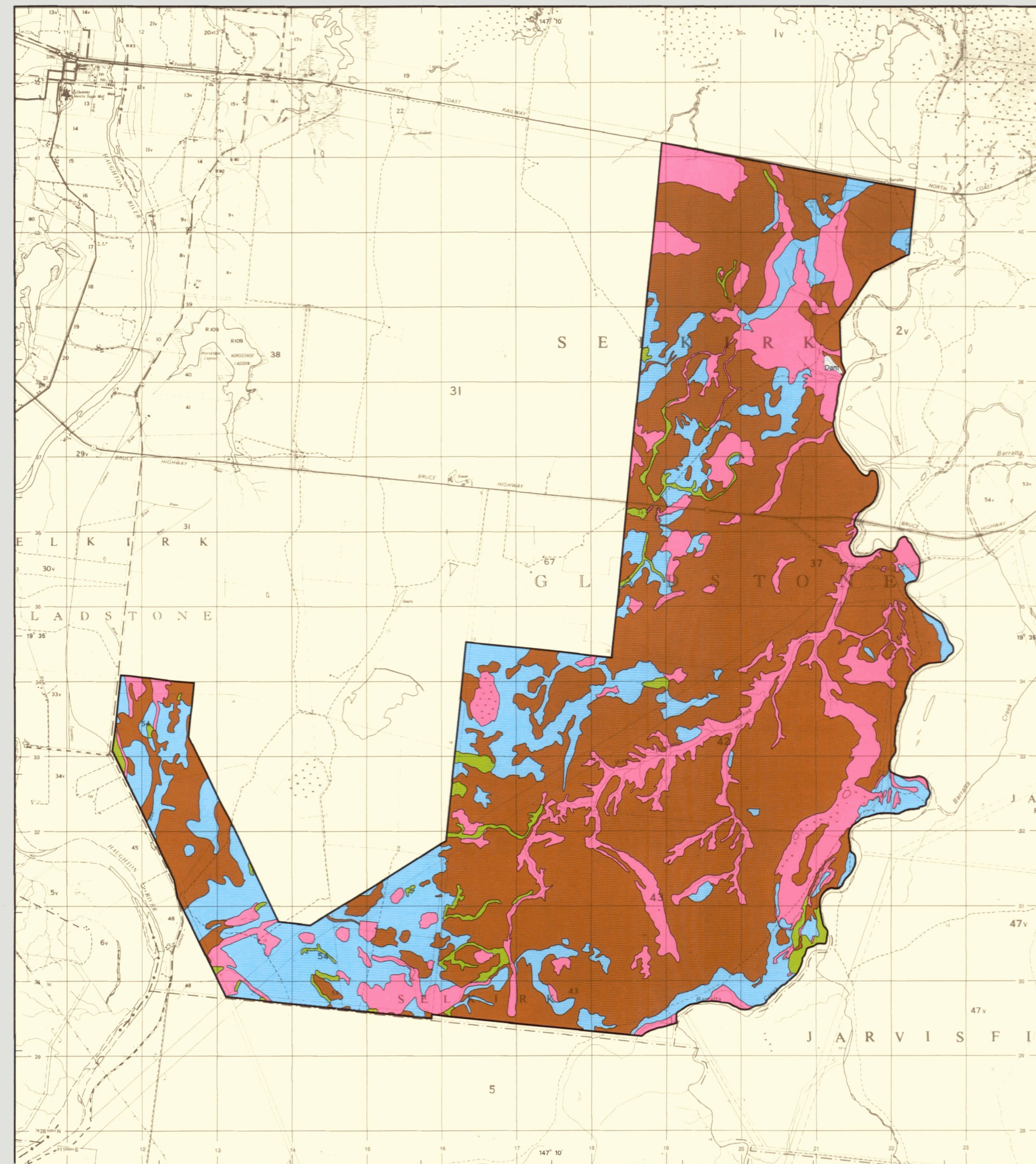
FURROW IRRIGATION OF MAIZE



FURROW IRRIGATION OF CAPSICUMS

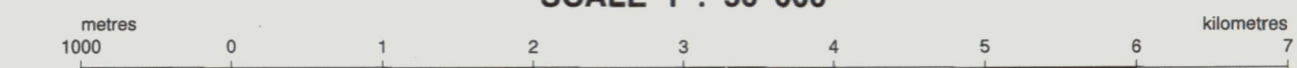


LOW VOLUME IRRIGATION OF MANGOES



BURDEKIN RIVER IRRIGATION AREA
SELKIRK AREA
LAND SUITABILITY

SCALE 1 : 50 000



GREY NUMBERED GRID LINES ARE 1000 METRE INTERVALS OF THE AUSTRALIAN MAP GRID, ZONE 55
GRID VALUES ARE SHOWN IN FULL AT THE SOUTH WEST CORNER OF THE MAP
Transverse Mercator Projection

REFERENCE

- Class 1 Suitable land with negligible limitations
- Class 2 Suitable land with slight limitations
- Class 3 Suitable land with moderate limitations
- Class 4 Marginal land - presently unsuitable
- Class 5 Unsuitable land.

INTENSITY STATEMENT

This assessment uses the results of a high intensity soil survey. The soil survey was based on aerial photograph interpretation and ground observations of the order of one observation to an area of 6 hectares.

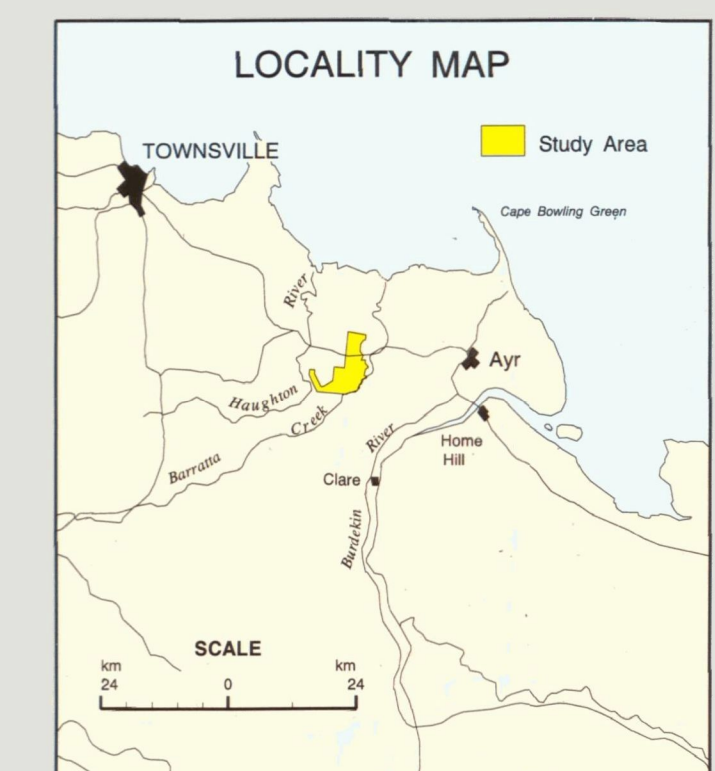
NOTE

Land is classified on the basis of a specified land use which allows optimum production with minimal degradation to the land resource in the long term. Current technology and management are assumed and the land was assessed as it was found at the time of the survey.

ASSESSMENT by J.K. Loi, N.G. Christiano and J.I. McClurg, Land Management Division, Department of Primary Industries, Ayr.
CARTOGRAPHY by S. F. Crofts and J. K. Myers, Land Management Division, Department of Primary Industries, Brisbane.

BASE MAP compiled from the 1 : 25 000 Topographic Series supplied by the Department of Lands, Brisbane.

PRINTED by GOPRINT, Brisbane, 1995.



© the State of Queensland, Department of Primary Industries, 1995

DISCLAIMER:
This is a scanned image and some detail may be illegible or lost. While every care is taken to ensure the accuracy of this product, the Department of Natural Resources and Mines makes no representation or warranty about its accuracy, reliability, completeness or suitability for any particular purpose and disclaims all responsibility and all liability (including without limitation, liability in negligence) for all expenses, losses, damages (including indirect or consequential damage) and costs which you might incur as a result of the product being inaccurate or incomplete in any way for any reason.