

16. Appendices

<u>16.1</u>	<u>Port of Amrun and Pilotage Plan</u>	67
<u>16.2</u>	<u>Amrun Pilotage area</u>	68
<u>16.3</u>	<u>DUKC Vessel Particulars Form</u>	69
<u>16.4</u>	<u>Permission to Immobilise Main Engines</u>	70
<u>16.5</u>	<u>Amrun Port Layout</u>	71
<u>16.6</u>	<u>Pilotage and Compulsory Pilotage Areas</u>	72
<u>16.7</u>	<u>Port of Amrun – Departure - North going current</u>	73
<u>16.8</u>	<u>Port of Amrun – Departure South going current</u>	74
<u>16.9</u>	<u>Weipa (including Amrun) Vessel Traffic Service Area</u>	75

For a high resolution map please visit [Section 16.1 - Amrun Port Procedures and Information for Shipping - Amrun: Port Procedures and Information for Shipping - Publications | Queensland Government](#)

PORT OF AMRUN

Vessel

PILOTAGE PLAN - ARRIVAL

VTS Cairns listens continuously on VHF 16 or VHF 10. Should any emergency arise, call Cairns for assistance. The bridge team will be required to plot vessel's position as required by Maritime Safety Queensland and International Regulations. The pilotage passage will be monitored by VTS Cairns.

[illegible]

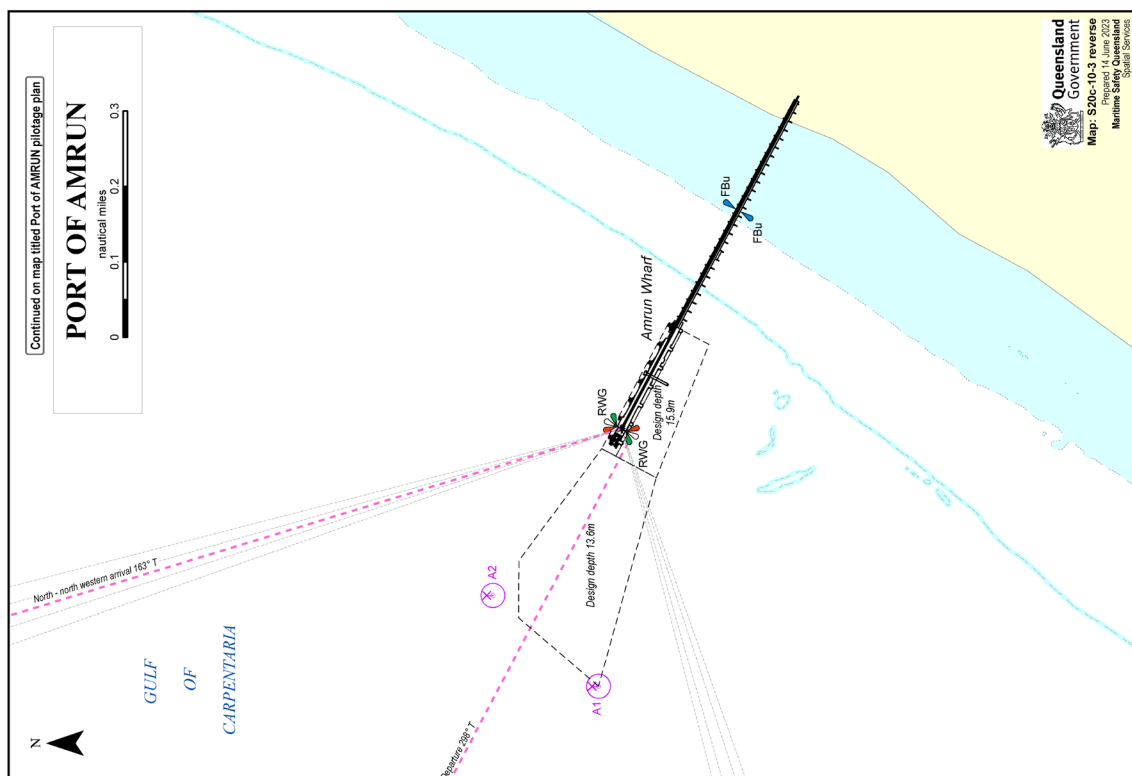
PORT OF AMRUN

Vessel

PILOTAGE PLAN - REMOVAL/DEPARTURE

VTS Cairns listens continuously on VHF 16 or VHF 10. Should any emergency arise, call Cairns for assistance. The bridge team will be required to plot vessel's position as required by Maritime Safety Queensland and International Regulations. The pilotage passage will be monitored by VTS Cairns.

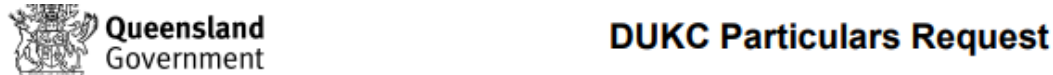
Pilot					Pilot card Defects	yes no	no no
Date						yes	
Passage					LAT + Tide		
Channels (VHF)							
Draft:	F	A			Available Water Draft		
Tide	Time	Height					
Wind	DIR	SP			UKC		
Remarks:							



16.3 DUKC Vessel Particulars Form

Please follow this link to access the official fillable PDF form: [F5371 - DUKC Particulars Request](#)

This is a replica of the form and is not intended to be used.



Vessel particulars

Ship's name	LOA (m)
IMO Number	LBP (m)
DWT	Beam (m)

Torres Strait Transit

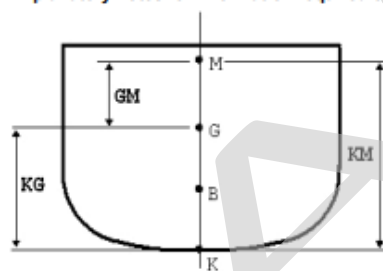
Is the vessel restricted to Torres Strait draft of 12.20m? Yes ☐ No ☐

Loading condition

Expected Departure Draft -50cm		Expected Departure Draft		Expected Departure Draft +50cm	
Displacement		Displacement		Displacement	
Draft		Draft		Draft	
GM(f)		GM(f)		GM(f)	
GM(s)		GM(s)		GM(s)	
KG		KG		KG	
KM		KM		KM	

KG+GM(S)-KM=			
--------------	--	--	--

Explanatory notes for information required on pre-arrival form



KG: Is the distance from the keel to the centre of gravity (in metres). To be provided for the vessel's expected departure condition.

KM: Is the distance from the keel to the metacentre (in metres). With the metacentre of a ship being defined as the line of intersection of the upward buoyant force when a ship is at rest, and when a ship is displaced. $KM = KG + GM/GMs$. To be provided for the vessel's expected departure condition.

GMs: Is the distance (static) between the centre of gravity and the metacentre, known as the metacentric height. To be provided for the vessel's expected departure condition.

GMf: Is again the distance from the centre of gravity to the metacentre but differs from the GM/GMs as it accounts for free surface correction effects. These effects apply to any space that is partially filled with fluid. GMf is less than GM.

16.4 Permission to Immobilise Main Engines

Please follow this link to access the official fillable PDF form: [F5199 - Permission to Immobilise Main Engines - Cairns Region](#)

This is a replica of the form and is not intended to be used.

(THIS FORM IS ONLY TO BE USED IF THE REQUEST CANNOT BE SUBMITTED BY THE AGENT WITHIN QSHIPS)

Queensland Government **Permission to Immobilise Main Engines - Cairns Region**

Before operations are carried out this form should be filled out by ship's agents/masters and forwarded to the Regional Harbour Master for approval on:

Fax: 07 4052 7460 or

Email: vtsc Cairns@msq.qld.gov.au

Location: Cairns ☐ Karumba ☐ Thursday Island ☐ Mourilyan ☐
Cairns anchorage ☐ Karumba anchorage ☐ Thursday Island anchorage ☐ Mourilyan anchorage ☐
Weipa ☐ Amrun ☐ Cape Flattery ☐ Skardon River ☐
Weipa anchorage ☐ Amrun anchorage ☐ Other ☐

Vessel name

Agent

Permission is sought to immobilise main engines - master to complete noting the conditions below:

From hrs On / / To hrs On / /

Scope of repairs (if appropriate)

Time required to mobilise in emergency situation

Subject to the following conditions:

1. Prior to immobilising, advise VTS on port working channel.
2. For vessels alongside moorings, to be tended throughout.
3. For vessels at anchorage, anchored position to be monitored at all times.
4. During daylight hours, fly signal flags 'R' over 'Y'.
5. On completion, advise VTS on port working channel.

For vessels at anchor, this permission is only valid whilst weather conditions are suitable.

Masters are requested not to conduct prolonged engine trials whilst berthed at Cairns Port Authority wharves.

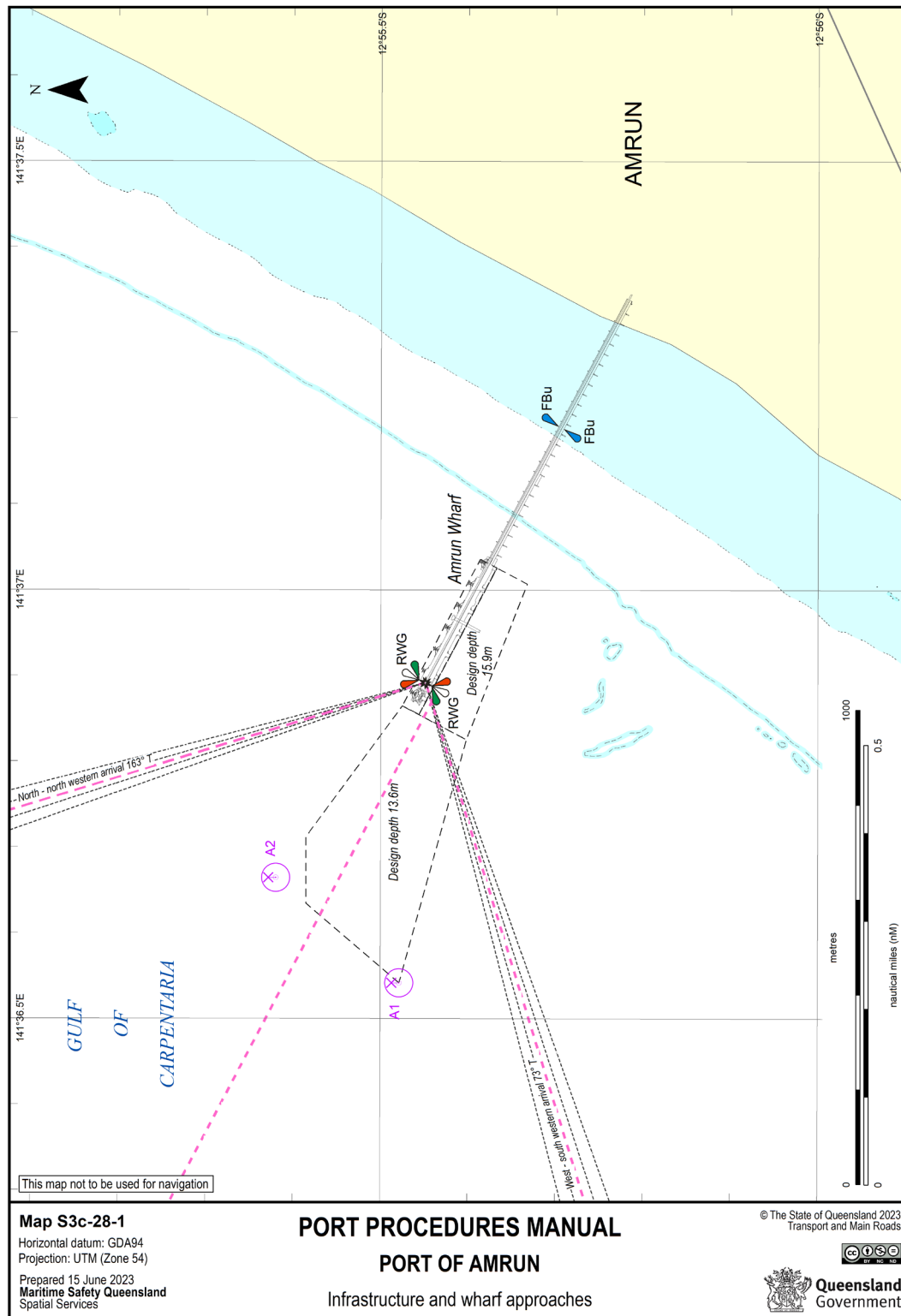
Approved/Not approved

Date

Privacy Statement: The Department of Transport and Main Roads is collecting the information on this form under the provisions of the Transport Operations (Marine Safety) Act 1994. The department may disclose this information to authorised departmental officers and officers of Queensland port authorities. Your personal information will not be disclosed to a third party without your consent unless required or authorised to do so by law.

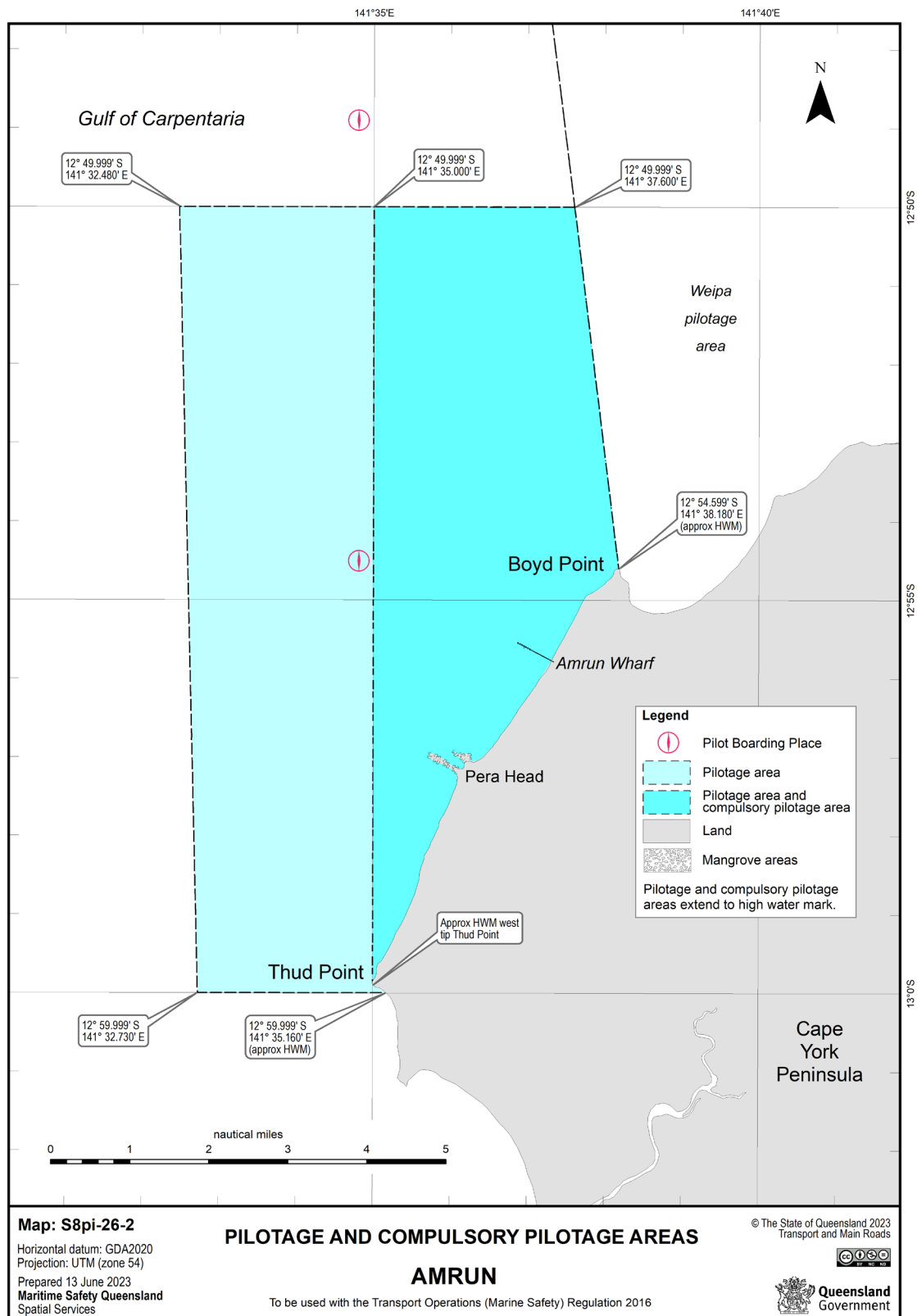
16.5 Amrun Port Layout

For a high resolution map please visit [Section 16.5 - Amrun Port Procedures and Information for Shipping - Amrun: Port Procedures and Information for Shipping - Publications | Queensland Government](#)



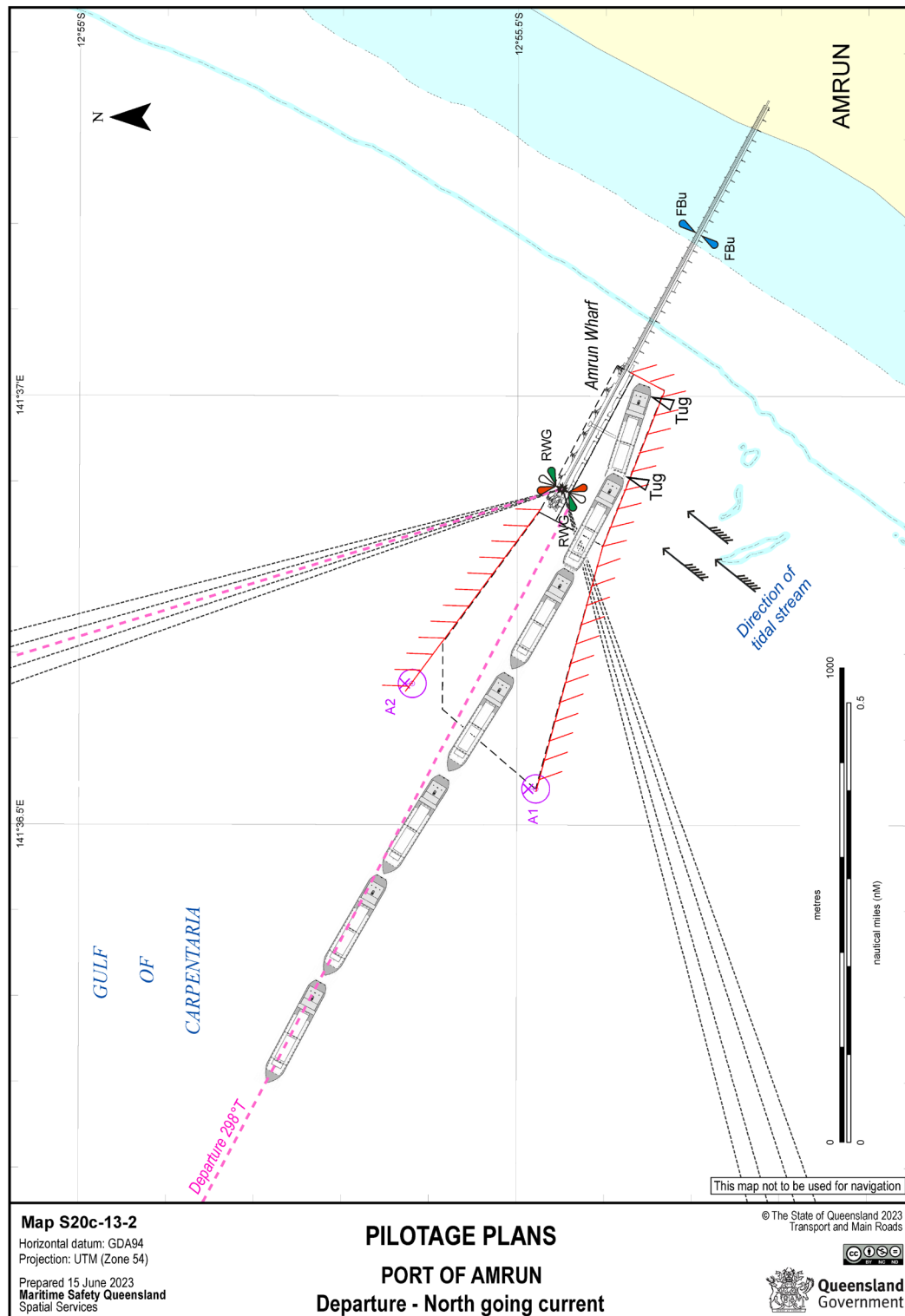
16.6 Pilotage and Compulsory Pilotage Areas

For a high resolution map please visit [Section 16.6 - Amrun Port Procedures and Information for Shipping - Amrun: Port Procedures and Information for Shipping - Publications | Queensland Government](#)



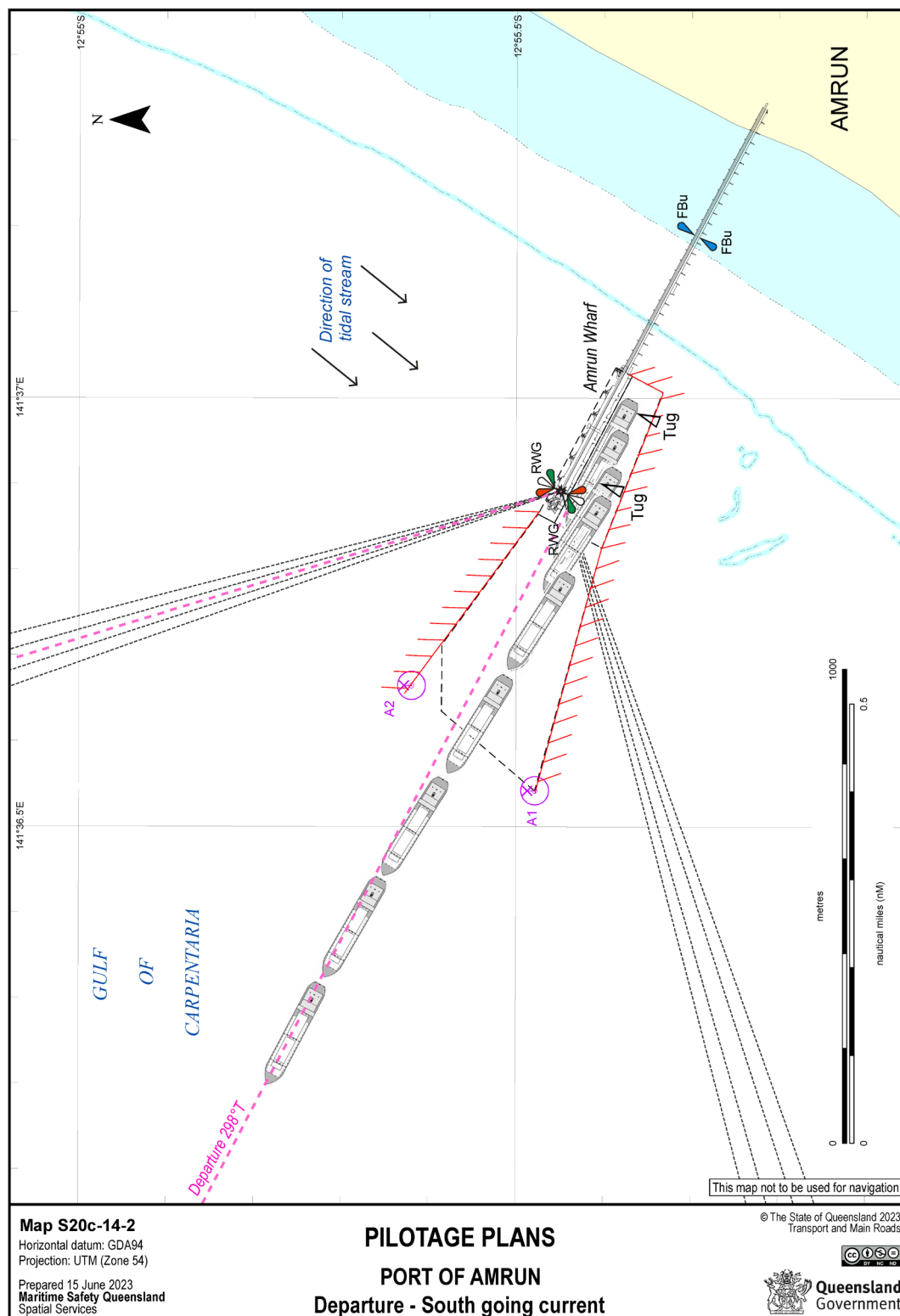
16.7 Port of Amrun – Departure - North going current

For a high resolution map please visit [Section 16.7 - Amrun Port Procedures and Information for Shipping - Amrun: Port Procedures and Information for Shipping - Publications | Queensland Government](#)



16.8 Port of Amrun – Departure South going current

For a high resolution map please visit [Section 16.8 - Amrun Port Procedures and Information for Shipping - Amrun: Port Procedures and Information for Shipping - Publications | Queensland Government](#)



16.9 Weipa (including Amrun) Vessel Traffic Service Area

For a high resolution map please visit [Section 16.9 - Amrun Port Procedures and Information for Shipping - Amrun: Port Procedures and Information for Shipping - Publications | Queensland Government](#)

