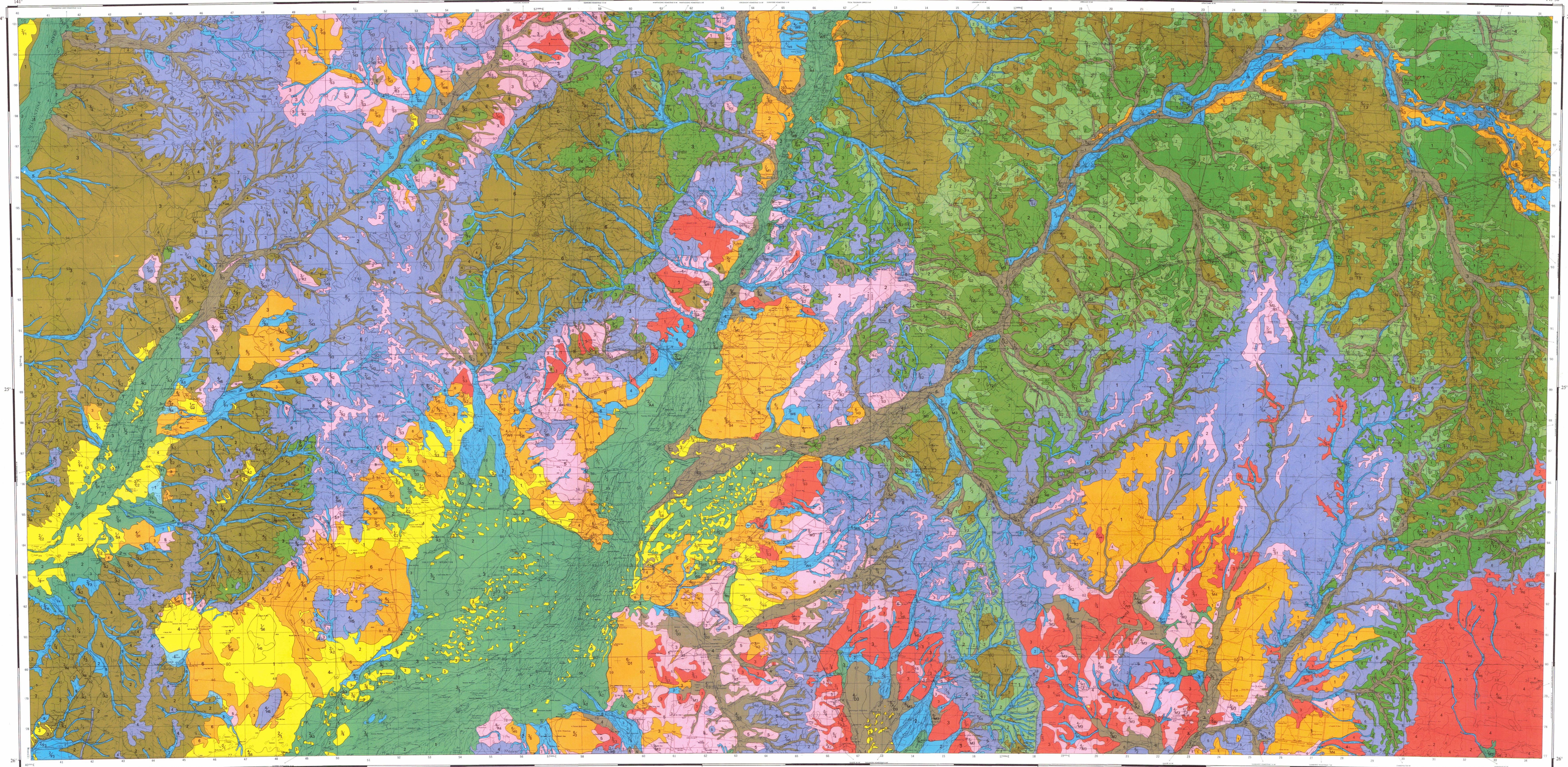


1:500 000



REFERENCE

DUNEFIELDS (D)

- 1 **MAYFIELD (1 910 km²)**
Plains with scattered longitudinal dunes 7-15 m high with mobile crests; spinifex open hummock grassland, usually wooded on the interdune plains and the stable lower dune flanks; sand-hill cone grass open hummock grassland or forbland on the crests; red siliceous sands on crests and upper flanks, with red, earthy sands and sandy red earths on the lower flanks and interdune plains.
- 2 **POONAMULLA (1 000 km²)**
Plains with converging and diverging dunes 8-12 m high, usually with mobile crests; spinifex open hummock grassland, wooded in places on the interdune plains and stable lower dune flanks; sand-hill cone grass open hummock grassland or forbland on the crests; red siliceous sands on crests and upper flanks, with red, earthy sands and sandy red earths on the lower flanks, grey clays on the interdune claypans.
- 3 **KYBARA (300 km²)**
Isolated low dunes or small groups of rounded dunes 1-7 m high, usually with mobile crests; sparse forbland to tall open shrubland with whitewood/*Acacia*/*Acacia*/*Acacia* western bloodwood/consocium, occasionally spinifex, open hummock grassland; red and yellow, siliceous sands with some red, earthy sands.
- 4 **CARRARA (600 km²)**
Networks of reticulate dunes less than 8 m high, with mobile crests and interdune claypans; spinifex open hummock grassland or forbland on the dunes and extended flanks, usually with coolibah, bluebush low open woodland or heavy grass open hummock grassland on the claypans; red, siliceous sands and earthy sands with grey clays and texture contrast soils on the interdune areas.

SANDPLAINS (S)

- 1 **GREENMULLA (2 010 km²)**
Flat to gently undulating plains; mulga tall open shrubland to tall shrubland, occasionally shrubby low open woodland; acid to neutral, deep, sandy red earths and red earths.
- 2 **FRASER (1 140 km²)**
Flat to gently undulating plains; mulga tall open shrubland to mulga, Mitchell grass, low open woodland, distinctly grooved; acid to neutral, deep, sandy red earths.
- 3 **WHITULA (1 400 km²)**
Flat plains (on- or near- level); mulga/*Acacia* mel/roostera tall open shrubland, occasionally western bloodwood low open woodland; neutral, shallow to moderately deep, sandy red earths, and some red clays.
- 4 **PAULINE (1 000 km²)**
Gently undulating plains with claypan depressions; spinifex wooded densely undulating to undulating plains; bastard mulga tall open shrubland; shallow to very shallow, stony, red earths with siliceous cover.
- 5 **IBB (1 420 km²)**
Flat to gently undulating plains; gidgee open woodland to low open woodland and eastern dead finish/*Acacia*/*Acacia* shrubby low open woodland to open woodland; alkaline, very deep, red and brown, texture contrast soils and some grey clays.
- 6 **GALKAY (1 000 km²)**
Gently undulating to flat plains; spinifex open hummock grassland, occasionally wooded; red, earthy sands with minor occurrences of sandy red earths and red siliceous sands.

SOFT MULGA LANDS (M)

- 1 **WIRNIGLE (400 km²)**
Gently undulating plains; mulga, western bloodwood tall open shrubland to mulga tall shrubland, distinctly grooved; moderately deep to deep, red earths, and texture contrast soils, and deep, red clays commonly with sink holes.
- 2 **AMBATALLA (580 km²)**
Flat to very low sloping plains (on- or near- level); mulga, poplar box low open woodland to poplar box open woodland, occasionally gidgee low open woodland; deep, red, texture contrast soils and red earths, minor occurrences of gidgee, brown and grey clays.
- 3 **CHANDOS (2 070 km²)**
Gently undulating plains; mulga, western bloodwood tall open shrubland, to mulga, tall open shrubland, distinctly grooved; shallow to moderately deep, red earths and texture contrast soils, with occasional sink holes.
- 4 **BRONTE (1 410 km²)**
Flat to gently undulating plains; mulga, poplar box tall open shrubland to open woodland, occasionally poplar box low open woodland; gidgee growing; moderately deep to very deep, red earths and texture contrast soils.

HARD MULGA LANDS (H)

- 1 **BRAIDWOOD (230 km²)**
Undulating plains and low hills; complex of mulga/western bloodwood tall open shrubland, bastard mulga, low open shrubland and gidgee tall open shrubland; shallow, red earths and hardpan soils, with areas of brown clays.
- 2 **CARELLA (1 380 km²)**
Flat to gently undulating tops of dissected tablelands; mulga (sparsely) tall open shrubland, rarely tall shrubland, low open shrubland and gidgee tall open shrubland; shallow, red earths and hardpan soils, with areas of brown clays.
- 3 **ONOTO (1 880 km²)**
Undulating to gently undulating plains; mulga (sparsely) tall open shrubland to mulga, western dead finish tall open shrubland; occasionally mulga tall open shrubland, grooved in places; shallow, red earths and texture contrast soils, commonly with sink holes.
- 4 **COTHALOR (950 km²)**
Undulating to gently undulating cover plains; mulga sparse tall open shrubland to mulga, western bloodwood tall open shrubland; shallow, siliceous, red earths with siliceous cover.
- 5 **TENHAM (900 km²)**
Undulating to gently undulating plains; bastard mulga tall open shrubland; shallow to very shallow, stony, red earths with siliceous cover.

DISSECTED RESIDUALS (R)

- 1 **QILMORE (4 710 km²)**
Scarp, dissected areas and flat tops of tablelands, mesas and buttes; mulga tall open shrubland, low open shrubland, low open woodland, low open woodland, beside low woodland on the scarps; lithoic, exposed rock and very shallow, stony, red earths.
- 2 **MARSON (1 980 km²)**
Eroded tops of dissected hills and undulating plains; bastard mulga, desert needlewood low open shrubland; lithoic, usually with exposed rock.

WOODED DOWNS (T)

- 1 **HOBSON (1 840 km²)**
Flat to gently undulating plains; Mitchell grass wooded open tussock grassland, gidgee and some conspicuous forming tall open shrubland to low open woodland in places, moderately deep to deep, brown cracking clays.
- 2 **GREENWOOD (2 200 km²)**
Flat to gently undulating plains; Mitchell grass, bone wooded open woodland to bare low open woodland to open woodland; deep, brown cracking clays.
- 3 **TERROCK (1 160 km²)**
Flat to gently undulating plains; Mitchell grass wooded open tussock grassland, scattered whitewood, vine-tree, boomera, bone, gidgee and many other open woodlands in places; moderately deep to deep, brown and grey cracking clays.
- 4 **BOONEY (900 km²)**
Gently undulating plains; Mitchell grass wooded open tussock grassland to low open woodland of vine-tree/eastern dead finish/whitewood/blackish and western bloodwood, minor occurrences of Mitchell grass open tussock grassland; shallow to moderately deep, brown cracking clays with areas of very shallow, brown clays.
- 5 **KURBAN (1 000 km²)**
Dissected tablelands, low hills, and scarps; mulga/bastard mulga tall open shrubland to low open woodland on the scarps; lithoic and shallow, red earths.
- 6 **BUMBAROO (1 160 km²)**
Scarp and top of dissected tablelands, mesas and buttes; mulga/bastard mulga tall open shrubland to bastard mulga tall open shrubland with bastard/bastard tall open shrubland to tall open shrubland on the scarps; lithoic, exposed rock and shallow, red earths.
- 7 **WAVERNY (1 840 km²)**
Dissected tablelands, mesas, buttes and undulating plains; mulga, bastard mulga tall open shrubland to bastard mulga tall open shrubland with bastard mulga low open woodland on the scarps; lithoic, exposed rock and shallow, red earths.
- 8 **WAVERNY (1 840 km²)**
Dissected tablelands, mesas, buttes and undulating plains; mulga, bastard mulga tall open shrubland to bastard mulga tall open shrubland with bastard mulga low open woodland on the scarps; lithoic, exposed rock and shallow, red earths.

DOWNS (F)

- 1 **PALPARARA (1 280 km²)**
Flat to gently undulating plains; fluctuating climax of Mitchell grass, other short grasses, saltbush and basia herbfields; deep to very deep, red desert loams with gravel pavements and weak gidgee development, and deep to very deep, gidgee, red clays.
- 2 **PLEYNA (2010 km²)**
Flat to gently undulating plains; fluctuating climax of Mitchell grass, other short grasses, saltbush and basia herbfields; shallow to moderately deep, brown cracking clays with gravel pavements.
- 3 **DAVENPORT (2 300 km²)**
Flat to gently undulating plains; fluctuating climax of Mitchell grass, other short grasses, saltbush and basia herbfields; shallow to moderately deep, brown cracking clays with gravel pavements.
- 4 **ROONEY (1 200 km²)**
Flat to gently undulating plains; fluctuating climax of Mitchell grass, other short grasses, saltbush and basia herbfields; moderately deep, brown cracking clays with gravel pavements.
- 5 **BLACKALL (2 300 km²)**
Flat to gently undulating plains; Mitchell grass open tussock grassland to low open woodland with other short grasses, basia and saltbush herbfields, mimosa bush conspicuous in places; moderately deep, brown cracking clays with self-surfacing surfaces, scattered pebble rocks occasionally.
- 6 **WARRECCAN (2 710 km²)**
Occasionally flooded, flat, alluvial plains; saltbush/*Bassia*/short grass herbfield; brown and grey clays subject to scalding.
- 7 **WONAROOTA (2 860 km²)**
Poorly drained depressions on alluvial plains (commonly channelled); black/brown open shrubland to open herbfield to herbfield.

ALLUVIAL PLAINS, WOODLANDS (W)

- 1 **BARCOO (1 100 km²)**
Flat to gently undulating plains; Mitchell grass wooded open tussock grassland, scattered whitewood, vine-tree, boomera, bone, gidgee and many other open woodlands in places; moderately deep to deep, brown and grey cracking clays.
- 2 **MULO (440 km²)**
Flooded alluvial plains with main channels and some braided channels; river red gum/coolibah open woodland on major channels; yepoon open woodland in places and gidgee low open woodland on the braided channels; mainly brown and grey clays subject to seasonal scalding and sandy surfacing, texture contrast soils.
- 3 **RAVENSBURG (1 810 km²)**
Flooded alluvial plains with numerous braided channels; coolibah/river red gum low open open woodlands on the channels; Mitchell grass tussock grassland or herbfields on the alluvial plains; brown and grey clays.
- 4 **SPRINGFIELD (1 000 km²)**
Alluvial plains with main channels; gidgee, yepoon low open woodland to open woodland or gidgee shrubby tall open shrubland; grey clays commonly seasonally scalded, and red hardpan soils.
- 5 **FANNING (180 km²)**
Irregularly flooded plains; some grassy low open woodland to Mitchell grass, bone wooded open tussock grassland; deep, brown cracking clays; in eastern areas alluvial plains with coolibah low open woodland and grey clays.
- 6 **DURELLA (840 km²)**
Flat alluvial plains; gidgee low woodland to tall open shrubland and associated herbfields; very deep, brown and grey cracking clays subject to seasonal scalding.
- 7 **EDKINS (2 000 km²)**
Flooded alluvial plains with braided channels; gidgee tall open shrubland with herbfields on the inter-channel plains; alluvial brown clays subject to seasonal scalding.

CHANNEL COUNTRY (C)

- 1 **COOPER (1 180 km²)**
Flooded alluvial plains with anastomosing channels; predominantly herbfields with blackbush/ligum low open shrubland in depressions; coolibah/ligum low open woodland on major channels, and river red gum/coolibah low open woodland on near channels; brown cracking clays, with self-surfacing surfaces, scattered pebble rocks occasionally.
- 2 **CUNNAMULLA (2 870 km²)**
Occasionally flooded, flat, alluvial plains; saltbush/*Bassia*/short grass herbfield; brown and grey clays subject to scalding.
- 3 **WONAROOTA (2 860 km²)**
Poorly drained depressions on alluvial plains (commonly channelled); black/brown open shrubland to open herbfield to herbfield.

OTHER ALLUVIA (A)

- 1 **LISTOVEL (1 400 km²)**
Occasionally flooded plains; Mitchell grass open tussock grassland; brown and grey cracking clays, occasionally weakly gidgee.
- 2 **EROMANGA (1 170 km²)**
Occasionally flooded alluvial plains; saltbush/*Bassia*/short grass herbfield; brown and grey clays with scalded areas.
- 3 **MOOTEBA (280 km²)**
Flat alluvial plains; very sparse to sparse herbfield occasionally open herbfield; scalded, brown and grey clays and claypans.
- 4 **JUNDAH (280 km²)**
Rainy flooded, alluvial plains; open herbfield, occasionally Mitchell grass open tussock grassland, with gidgee shrubby tall open shrubland in places; brown and red cracking clays and scalded, red and brown, texture contrast soils.
- 5 **DINGERA (1 520 km²)**
Alluvial plains of minor streams; saltbush/*Bassia*/Mitchell grass/other short grass herbfield, with coolibah/river red gum fringing low open woodland or shrublands fringing low open woodland on channels; red and brown clays and red, sandy surfaced, texture contrast soils.
- 6 **WARRY (1 470 km²)**
Alluvial plains of minor streams; sparse herbfield to herbfield on the plains; river red gum/coolibah/box or coolibah fringing low open woodland occasionally mulga tall open shrubland near the channels; texture contrast soils subject to seasonal scalding, brown and grey clays and some red earths.

MISCELLANEOUS (L)

- 1 **CUODAPAN (70 km²)**
Occasionally flooded major lakes and associated claypans; sparse to open forbland, and heavy case grass open hummock grassland, occasionally fringed by coolibah low open woodland; massive and structured grey clays.

IMPORTANT NOTES

- In some mapping units mixtures of two or more land systems may occur; in these cases component land systems are indicated on the land system map.
- Terms such as siliceous and mantled pediment are defined in the text.
- / means with or without.
- Working sheets at a scale of 1:250 000 are available to users working in the area. These show details of those areas not annotated in the above map.

KEY TO 1:250 000 AREAS

SPRINGVALE	BRIGHTON DOWNS	MANEROO	LONGREACH	JERICO
MACHATTIE	CONNEMARA	JUNDHA	BLACKALL	TAMBO
BETOOTA Q.L.D.	CANTERBURY S.A.	WINDORAH	ADAVALE	AUGATHELLA
CORDILLO	BARROKA	EROMANGA	QUILPE	CHARLEVILLE

SCALE 1:500 000

Drawn by G. J. Finney

KEY TO ADJOINING SURVEYS

DISCLAIMER: This is a scanned image and some detail may be illegible or lost. While every care is taken to ensure the accuracy of this product, the Department of Natural Resources and Mines makes no representations or warranties about its accuracy, reliability, completeness or suitability for any particular purpose and disclaims all responsibility and all liability (including without limitation, liability in negligence) for all expenses, losses, damages (including indirect or consequential damage) and costs which you might incur as a result of the product being inaccurate or incomplete in any way for any reason.

PREPARED BY: Division of Land Utilisation, Queensland Department of Primary Industries.

CARTOGRAPHIC BASE: compiled by Division of Land Utilisation, Queensland Department of Primary Industries from positives supplied by Division of National Mapping, Department of National Resources, Canberra.

PRINTED AT: the Government Printing Office, Brisbane, 1976.