

ADVICE

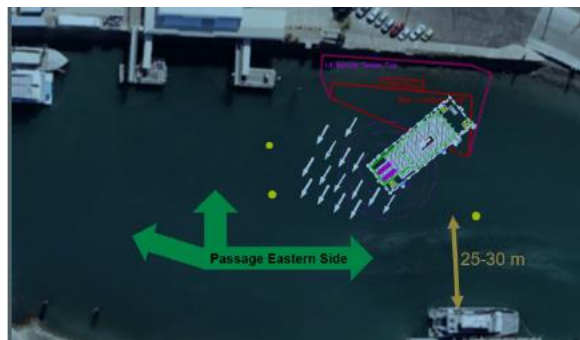
Issued by Townsville Maritime Region on 16 May 2025

Area: Townsville pilotage area
Locality: Ross Creek, Sealink Terminal
Activity: Bed Levelling Operations

Mariners are advised that:

Bed levelling operations in the Ross Creek will commence on Tuesday, 20 May 2025. The operations will be conducted from the barge “PMG 123”, equipped with a long-range excavator during daylight hours. Bed levelling is expected to be completed by Tuesday, 27 May 2025.

A construction zone will be marked by three special mark buoys in approximate positions:
Buoy 1: 19° 15.271'S, 146° 49.615'E; FL Y 2.5s
Buoy 2: 19° 15.295'S, 146° 49.603'E; FL Y 2.5s
Buoy 3: 19° 15.292'S, 146° 49.592'E; FL Y 2.5s



PMG 123 will be monitoring VHF 12, and 16, is restricted in her ability to manoeuvre and will displaying appropriate shapes and lights.

Mariners are advised to navigate with caution, observe no wash and to remain East of the marker buoys.

Latitude and longitude positions are on WGS84 horizontal datum and are compatible with GDA2020 datum.

For further information about this notice, please contact:

The Townsville Regional Harbour Master's office:

Phone 07 4421 8100

Email: vtstownsville@msq.qld.gov.au

Notice authorised by: Regional Harbour Master (Townsville) - Maritime Safety Queensland