

NOTICE TO MARINERS



607 (T) of 2023

Issued by Townsville Maritime Region on 19 December 2023

Area: Townsville pilotage area
Locality: Townsville, Cleveland Bay
Activity: Platypus & Sea Channel, Beacons (Physical and Virtual)

Mariners are advised that:

the declared channels for the port of Townsville are currently marked by a combination of Physical and Virtual Lateral marks

Physical or Virtual (MMSI)	Name	Position (Latitude/Longitude)	Light
Port Lateral Mark	Beacon S2	19° 08.4492'S 146°53.3935'E	QR
Starboard Lateral Mark	Beacon S5	19° 09.3419'S 146°52.8750' E	QR
Port Lateral Mark	Beacon S6	19° 09.3874'S 146°52.9999'E	QR
Starboard Lateral Mark	Beacon S7	19° 09.8848'S 146°52.6644'E	FIG4s
Port Lateral Mark	Beacon S8	19° 09.9247'S 146°52.7739'E	FIR4s
Starboard Lateral Mark	Beacon S9	19° 10.4236'S 146°52.4469'E	FIG4s
995036179	TSV_S10 PORT LAT	19° 10.4576'S 146°52.5338'E	
Starboard Lateral Mark	Beacon S11	19°11.1965' S 146°52.1312'E	FIG4s
Port Lateral Mark and 995036180	Beacon S12 TSV_S12 PORT LAT	19°11.2492'S 146°52.2125'E	FIR4s
Starboard Lateral Mark	Beacon P1	19°11.4870' S 146°51.9696' E	QG
Port Lateral Mark	Beacon P2	19°11.5401'S 146°52.0858'E	QR
995036181	TSV_P3 STBD LAT	19°11.7338'S 146°51.8405'E	
Port Lateral Mark	Beacon P4	19°11.7942'S 146°51.9304'E	FIR4s; QW (FW day)
995036182	TSV_P5 STBD LAT	19°12.1947'S 146°51.5422'E	
Port Lateral Mark	Beacon P6	19°12.2441'S 146°51.6332'E	FIR4s
995036183	TSV_P7 STBD LAT	19°12.6570'S 146°51.2444'E	
Port Lateral Mark	Beacon P8	19°12.7074'S 146°51.3346'E	FIR4s
995036184	TSV_P9 STBD LAT	19°13.1195'S 146°50.9456'E	
Port Lateral Mark	Beacon P10	19°13.1697'S 146°51.0355'E	QR

995036185	TSV_P11 STBD LAT	19°13.5815'S 146°50.6481'E	
Port Lateral Mark	Beacon P12	19°13.6334'S 146°50.7374'E	FIR4s
995036186	TSV_P13 STBD LAT	19°14.0452'S 146°50.3494'E	
Port Lateral Mark	Beacon P14	19°14.0959'S 146°50.4379'E	FIR4s
995036187	TSV_P15 STBD LAT	19°14.5778'S 146°50.0258'E	
Port Lateral Mark	Buoy P16 (temp)	19°14.552'S 146°50.139'E	QR
995036248	TSV_P16 PORT LAT	19°14.5640'S 146°50.1250'E	
Starboard Lateral Mark	Beacon 17	19°14.6658'S 146°49.9687'E	OcG4s

Mariners are advised the dredging is in progress in the area between the existing toe line and the new toe line indicated by the hatched area in the attached map S11-590 -2

The following lateral beacons have been established in preparation for the completion of the widening of the Platypus and Sea channel.

Physical	Name	Position (Latitude/Longitude)	Light
Port Lateral Mark	Beacon S10	19° 10.4628'S 146°52.5543'E	FIR4s
Starboard Lateral Mark	Beacon P5	19°12.1766'S 146°51.5186'E	FIG4s
Starboard Lateral Mark	Beacon P9	19°13.0992'S 146°50.9143'E	QG
Starboard Lateral Mark	Beacon P11	19°13.5601'S 146°50.6122'E	FIG4s
Starboard Lateral Mark	Beacon P13	19°14.0219'S 146°50.3094'E	FIG4s
Starboard Lateral Mark	Beacon P15	19°14.4902'S 146°50.0025'E	QG

Mariners are advised to exercise caution when navigating in the vicinity of their operations.

Refer to notice: none

Cancel notice: 368(T) of 2022

AUS charts affected: 256,257,827

Latitude and longitude positions are on WGS84 horizontal datum and are compatible with GDA2020 datum.

For further information about this notice, please contact:

The Townsville Regional Harbour Master's office:

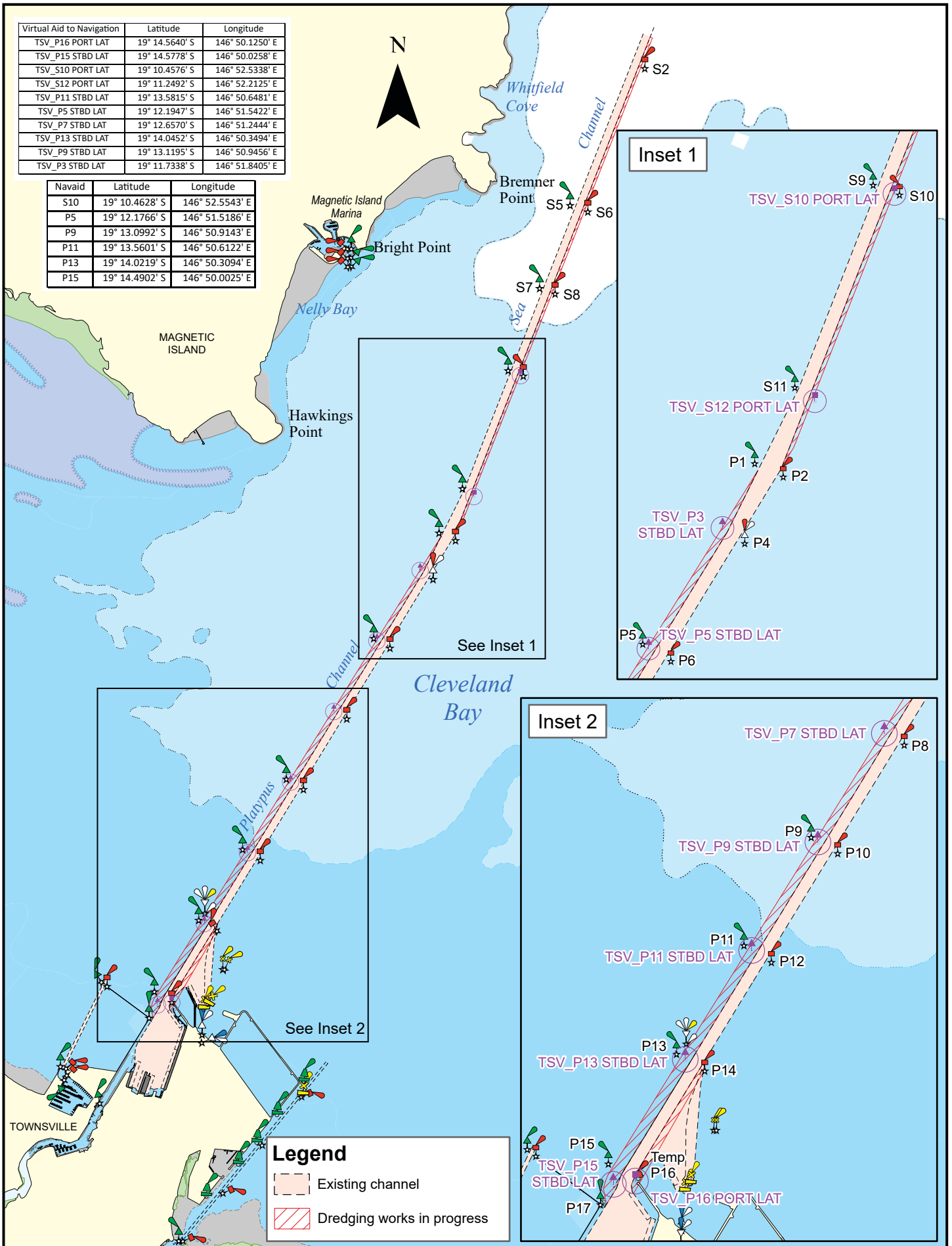
Phone 07 4421 8100

Email: vtstowns@msq.qld.gov.au

Notice authorised by: Regional Harbour Master (Townsville) - Maritime Safety Queensland

Virtual Aid to Navigation	Latitude	Longitude
TSV_P16 PORT LAT	19° 14.5640' S	146° 50.1250' E
TSV_P15 STBD LAT	19° 14.5778' S	146° 50.0258' E
TSV_S10 PORT LAT	19° 10.4576' S	146° 52.5338' E
TSV_S12 PORT LAT	19° 11.2492' S	146° 52.2125' E
TSV_P11 STBD LAT	19° 13.5815' S	146° 50.6481' E
TSV_P5 STBD LAT	19° 12.1947' S	146° 51.5422' E
TSV_P7 STBD LAT	19° 12.6570' S	146° 51.2444' E
TSV_P13 STBD LAT	19° 14.0452' S	146° 50.3494' E
TSV_P9 STBD LAT	19° 13.1195' S	146° 50.9456' E
TSV_P3 STBD LAT	19° 11.7338' S	146° 51.8405' E

Navaid	Latitude	Longitude
S10	19° 10.4628' S	146° 52.5543' E
P5	19° 12.1766' S	146° 51.5186' E
P9	19° 13.0992' S	146° 50.9143' E
P11	19° 13.5601' S	146° 50.6122' E
P13	19° 14.0219' S	146° 50.3094' E
P15	19° 14.4902' S	146° 50.0025' E



Map S11-590-2

Horizontal datum: GDA2020
 Projection: UTM (MGA Zone 55)
 Prepared 19 December 2023
 Maritime Safety Queensland
 Spatial Services

Navigation constraints issued by Regional Harbour Master (Townsville)

© The State of Queensland 2023
 Transport and Main Roads

**DREDGING WORKS IN PROGRESS
 TOWNSVILLE**

