

NOTICE TO MARINERS



542 (T) of 2023

Issued by Townsville Maritime Region on 24 November 2023

Area: Townsville pilotage area
Locality: Townsville, Cleveland Bay, Sea channel and Platypus channels
Activity: Channel Upgrade, Dredging operations

Mariners are advised that:

dredging operations to widen the Sea Channel and Platypus Channel are in progress. Widening is being undertaken on

- The Western side of the Platypus Channel along the length from the Breakwater to the intersection with the Sea Channel; and
- The Eastern side of the Platypus Channel from Beacon P 14 to the entrance of the swing basin, and
- The Eastern side of the Sea Channel along the length from the intersection with the Platypus Channel to the seaward end of the sea channel

as shown in the attached drawing S11-590-1 *Dredging works in progress - Townsville*.

Dredging is being conducted 24/7 from the spudded backhoe dredger "Woomera". Dredge material is being transported by various barges to the Temporary Unloading Facility (TUF) situated at the eastern reclamation area.

The "Woomera" is restricted in her ability to manoeuvre. Vessels connected to the dredging works may also be restricted in their ability to manoeuvre and will display appropriate day shapes and lights at night. All vessels associated with the dredging activity will maintain listening watch on VHF channel 12 and 16.

A 100 metre marine restricted area is declared around the spudded backhoe dredger "Woomera". The restricted area is marked by cardinal marks with the dredge barge "Woomera" and associated barges in the centre, as shown in the attached drawing S11-558rev *Sea Channel and Platypus Channel Dredging, Townsville*.

Mariners are advised to navigate with caution in the vicinity of construction area.

Refer to notice: none

Cancel notice: 070(t) of 2022

AUS charts affected: AUS256, AUS257

Latitude and longitude positions are on WGS84 horizontal datum and are compatible with GDA2020 datum.

For further information about this notice, please contact:

The Townsville Regional Harbour Master's office:

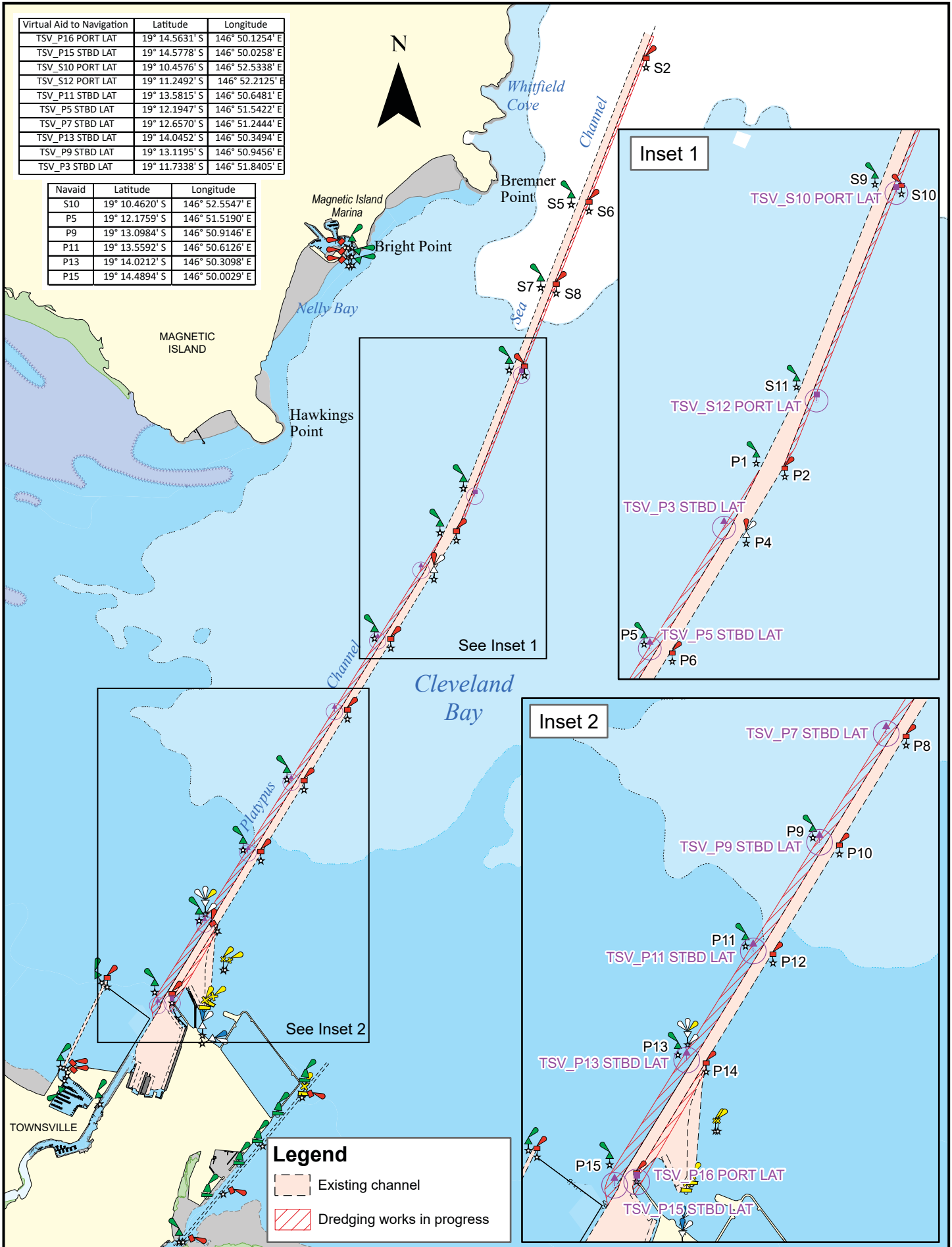
Phone 07 4421 8100

Email: vtstownsville@msq.qld.gov.au

Notice authorised by: Regional Harbour Master (Townsville) - Maritime Safety Queensland

Virtual Aid to Navigation	Latitude	Longitude
TSV_P16 PORT LAT	19° 14.5631' S	146° 50.1254' E
TSV_P15 STBD LAT	19° 14.5778' S	146° 50.0258' E
TSV_S10 PORT LAT	19° 10.4576' S	146° 52.5338' E
TSV_S12 PORT LAT	19° 11.2492' S	146° 52.2125' E
TSV_P11 STBD LAT	19° 13.5815' S	146° 50.6481' E
TSV_P5 STBD LAT	19° 12.1947' S	146° 51.5422' E
TSV_P7 STBD LAT	19° 12.6570' S	146° 51.2444' E
TSV_P13 STBD LAT	19° 14.0452' S	146° 50.3494' E
TSV_P9 STBD LAT	19° 13.1195' S	146° 50.9456' E
TSV_P3 STBD LAT	19° 11.7338' S	146° 51.8405' E

Navaid	Latitude	Longitude
S10	19° 10.4620' S	146° 52.5547' E
P5	19° 12.1759' S	146° 51.5190' E
P9	19° 13.0984' S	146° 50.9146' E
P11	19° 13.5592' S	146° 50.6126' E
P13	19° 14.0212' S	146° 50.3098' E
P15	19° 14.4894' S	146° 50.0029' E



Map S11-590-1

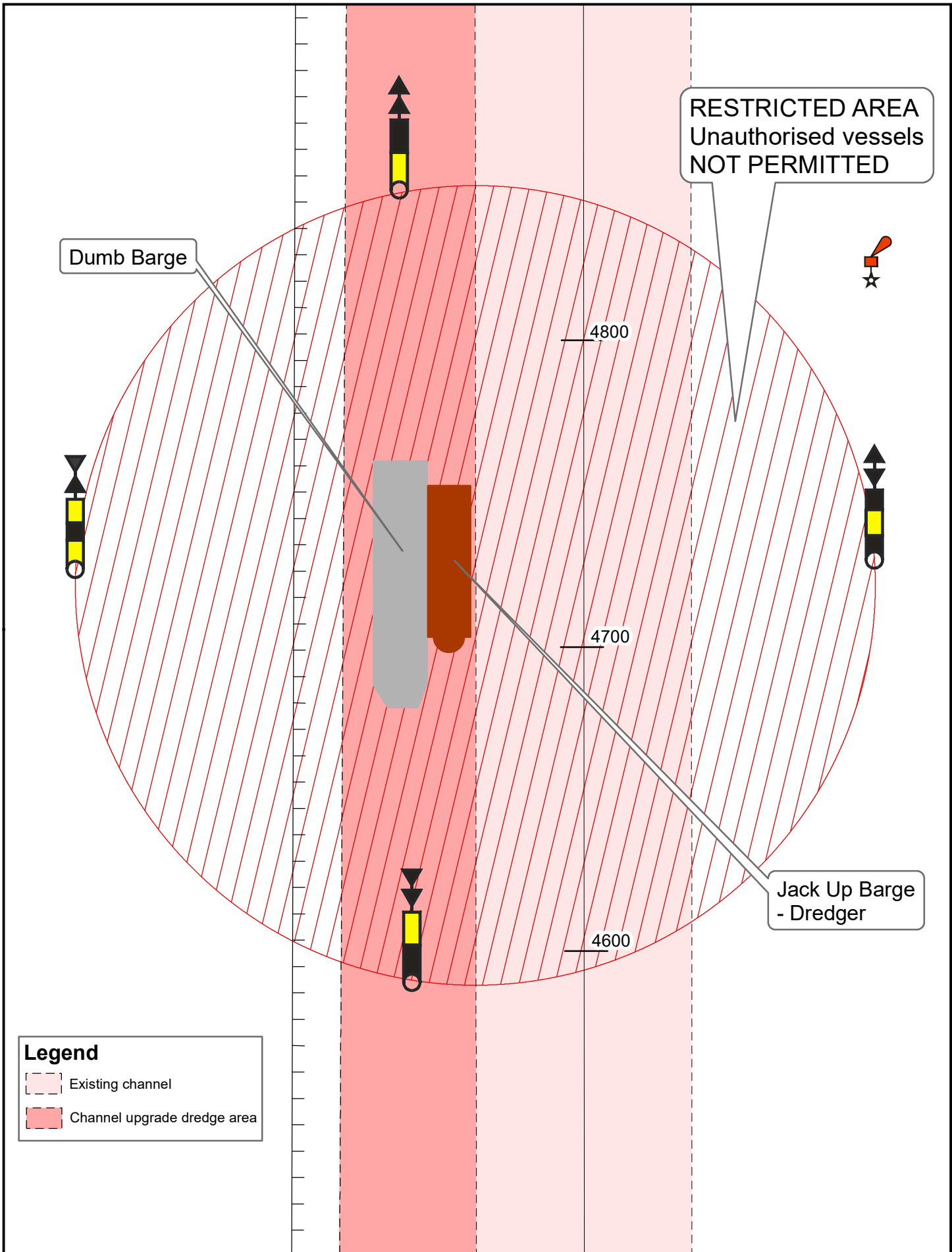
Horizontal datum: GDA2020
 Projection: UTM (MGA Zone 55)
 Prepared 14 November 2023
 Maritime Safety Queensland
 Spatial Services

Navigation constraints issued by Regional Harbour Master (Townsville)

© The State of Queensland 2023
 Transport and Main Roads

**DREDGING WORKS IN PROGRESS
 TOWNSVILLE**





Legend

- Existing channel
- Channel upgrade dredge area

Map S11-558rev
 Horizontal datum: GDA94
 Projection: UTM (MGA Zone 55)
 Prepared 11 February 2022
 Maritime Safety Queensland
 Spatial Services

Navigation constraints issued by Regional Harbour Master (Townsville)

**SEA CHANNEL AND
 PLATYPUS CHANNEL DREDGING
 TOWNSVILLE**

© The State of Queensland 2022
 (Transport and Main Roads)

