



NOTICE TO MARINERS

144 of 2024

Issued by Townsville Maritime Region on 28 March 2024

Area: Townsville pilotage area
Locality: Ross River Channel, Cleveland Bay
Activity: Change to Ross River Maintained Channel and current depth declaration

Mariners are advised that:

Due to changes in the river flow and siltation the Ross River maintained channel has been redeclared as follows (refer attached map S11-685-1 Townsville, Ross River, Declared Channel)

	Latitude	Longitude	Design depth
Upstream end	19° 16.1026' S	146° 50.1693' E	2.5 m
	19° 16.1130' S	146° 50.1826' E	Refer Notice to mariners for actual depth
Seaward end	19° 15.0578' S	146° 51.0968' E	
	19° 15.0681' S	146° 51.1100' E	

The channel is 30 metres wide with the centreline bearing 220.1° (T) <-> 040.1°(T)

The current declared depth is 1.6m

The aids to navigation in Ross River marking the declared channel are as follows:

Starboard Lateral buoy RR1	19°15.057'S	146°51.062'E	Fl G 2.5s	No top mark
Port Lateral Beacon RR2	19°15.0845'S	146°51.1177'E	Fl R 2.5s	Port Day shape
Starboard Lateral buoy RR3	19°15.292'S	146°50.850'E	Fl G 2.5s	No top mark
Port Lateral Beacon RR4	19°15.5000'S	146°50.7430'E	Fl R 2.5 s	No Day shape
Starboard Lateral buoy RR5	19°15.479'S	146°50.701'E	Fl G 3.5s	No top mark
Port Lateral Beacon RR6	19°15.8000'S	146°50.4610'E	Fl R 4 s	No Day Shape
Starboard Lateral Buoy RR7	19°15.624'S	146°50.582'E	Fl G 2.5s	No top mark
Starboard Lateral Beacon RR9	19°15.9200'S	146°50.3280'E	Fl G 2.5s	No day shape
Port Lateral Beacon RR10	19°16.1290'S	146°50.1980'E	Fl R 2.5s	No Day shape
Starboard Lateral Buoy RR11	19°16.050'S	146°50.202'E	Fl G 2.5s	No top mark

Mariners are advised sand banks in Ross River between beacons RR4 and RR10 is dynamic and constantly changing.

Mariners are advised to navigate with caution.

Refer to notice: 128(t) 2024

Cancel notice: 128(t) 2024

AUS charts affected: AUS 256

ENC Cells affected: AU420146 , AU5TSV01

Latitude and longitude positions are on WGS84 horizontal datum and are compatible with GDA2020 datum.

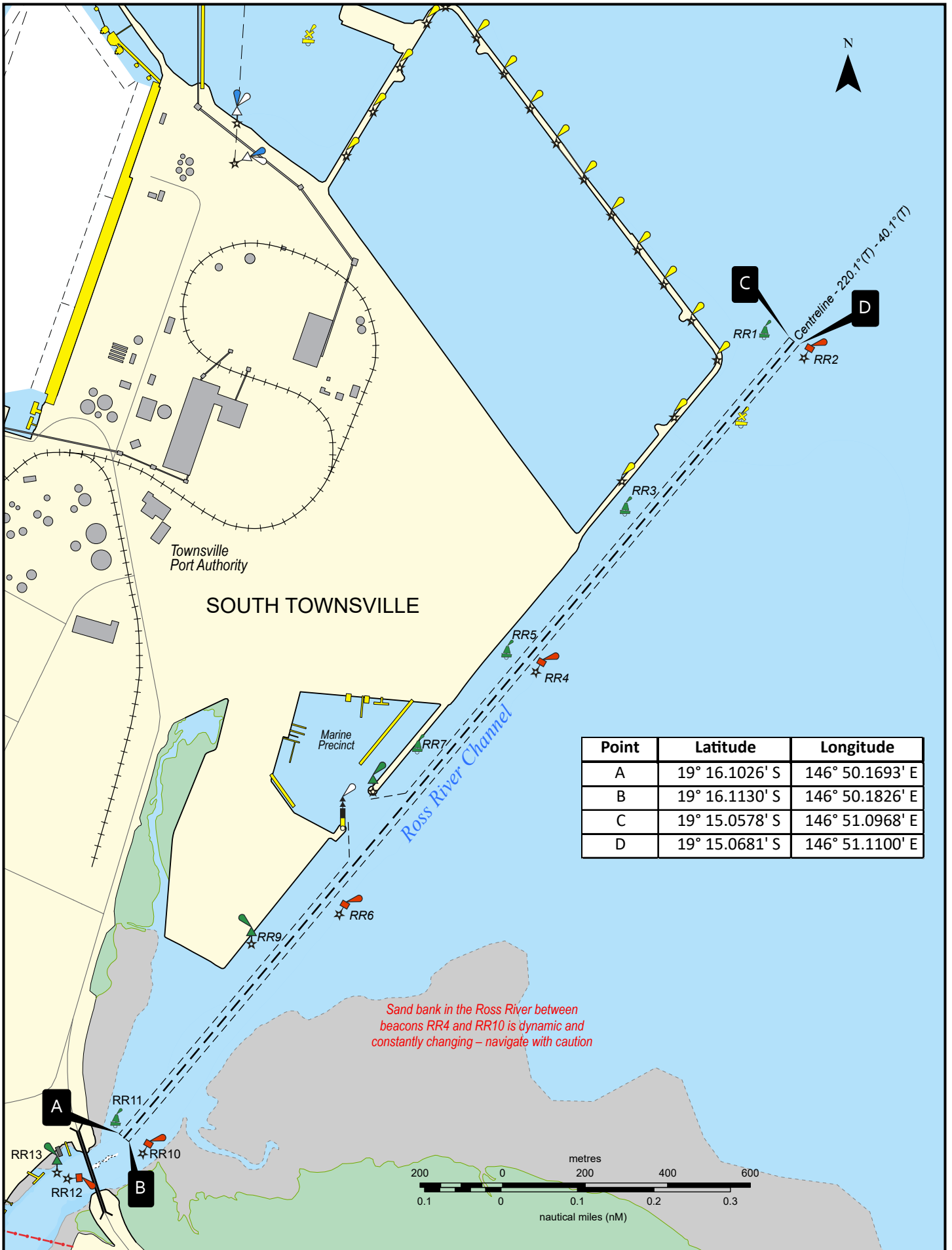
For further information about this notice, please contact:

The Townsville Regional Harbour Master's office:

Phone 07 4421 8100

Email: vtstownsville@msq.qld.gov.au

Notice authorised by: Regional Harbour Master (Townsville) - Maritime Safety Queensland



Point	Latitude	Longitude
A	19° 16.1026' S	146° 50.1693' E
B	19° 16.1130' S	146° 50.1826' E
C	19° 15.0578' S	146° 51.0968' E
D	19° 15.0681' S	146° 51.1100' E

Map S11-685-1

Map Datum: GDA2020
 Projection: UTM (MGA Zone 55)
 Prepared 28 March 2024
 Maritime Safety Queensland
 Spatial Services

Navigation constraints issued by Regional Harbour Master (Townsville)

© The State of Queensland 2024
 Transport and Main Roads

**ROSS RIVER - DECLARED CHANNEL
 TOWNSVILLE**

