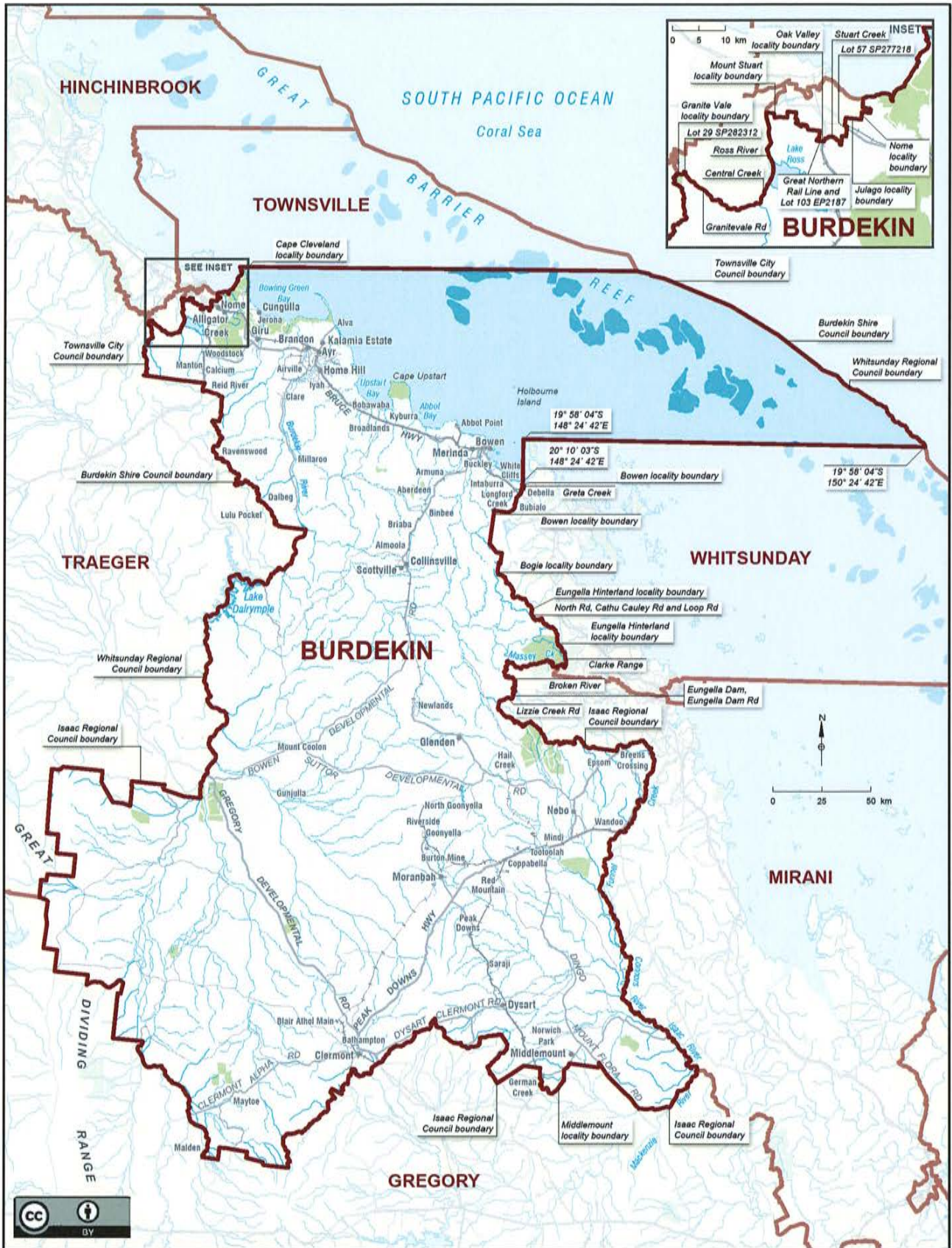


Queensland Electoral Boundaries 2017



© Electoral Commission Queensland 2017. ©The State of Queensland (Department of Natural Resources and Mines) 2015

Map drawn by Spatial Vision

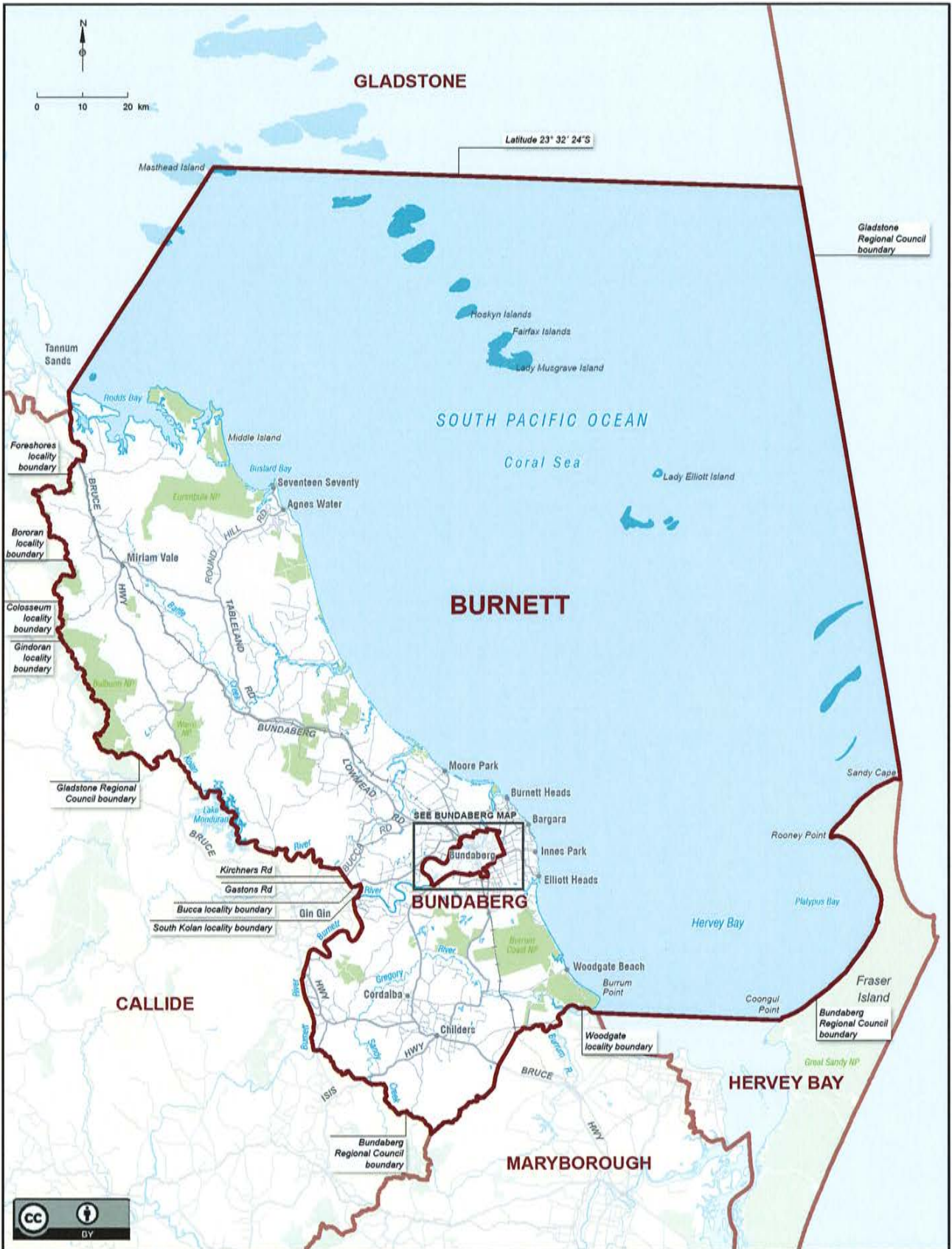
Queensland Electoral Boundaries 2017



© Electoral Commission Queensland 2017. © The State of Queensland (Department of Natural Resources and Mines) 2015.

Map drawn by Spatial Vision

Queensland Electoral Boundaries 2017



© Electoral Commission Queensland 2017. © The State of Queensland (Department of Natural Resources and Mines) 2015.

Map drawn by Spatial Vision

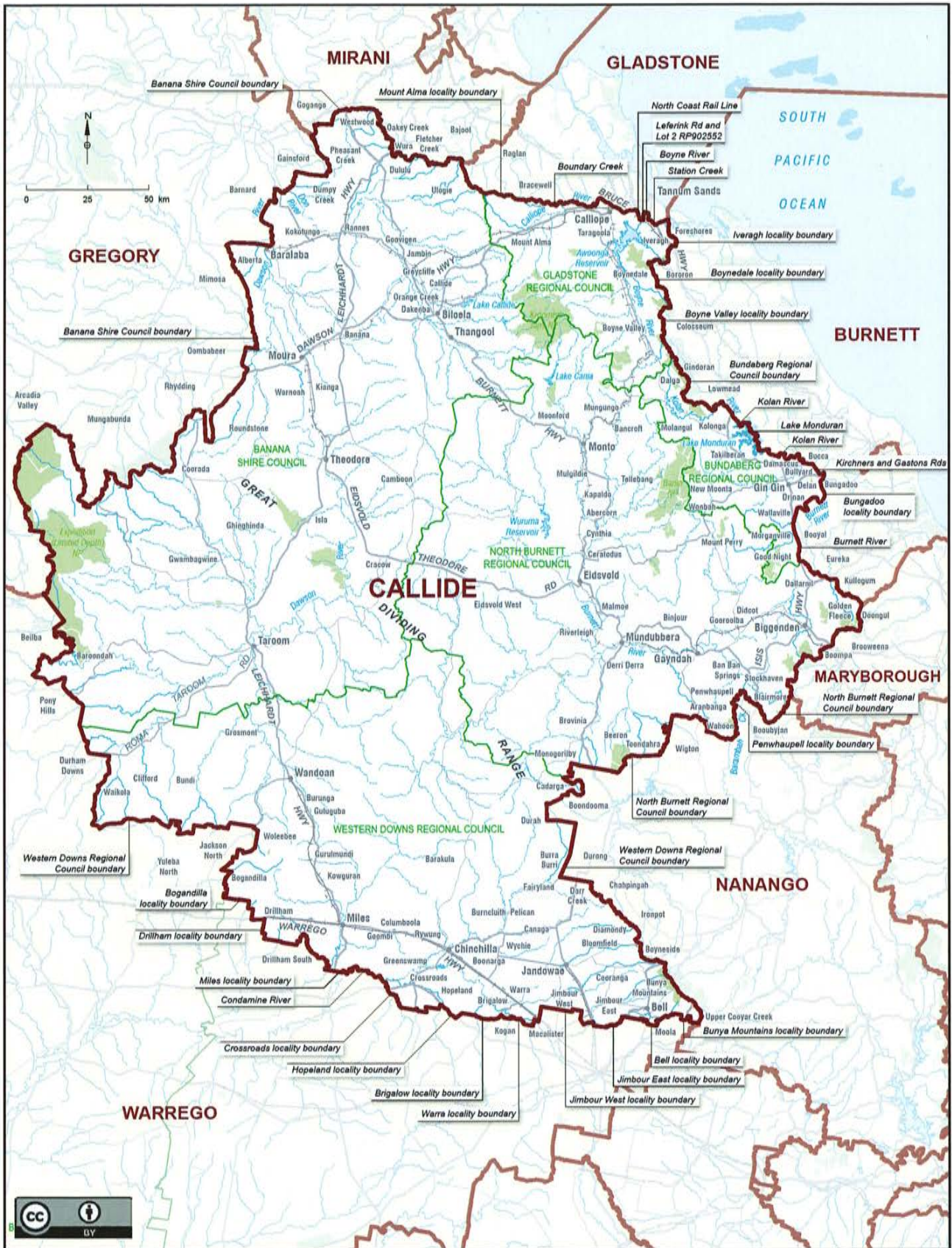
Queensland Electoral Boundaries 2017



© Electoral Commission Queensland 2017. © The State of Queensland (Department of Natural Resources and Mines) 2015.

Map drawn by Spatial Vision

Queensland Electoral Boundaries 2017



© Electoral Commission Queensland 2017. © The State of Queensland (Department of Natural Resources and Mines) 2015. Map drawn by Spatial Vision

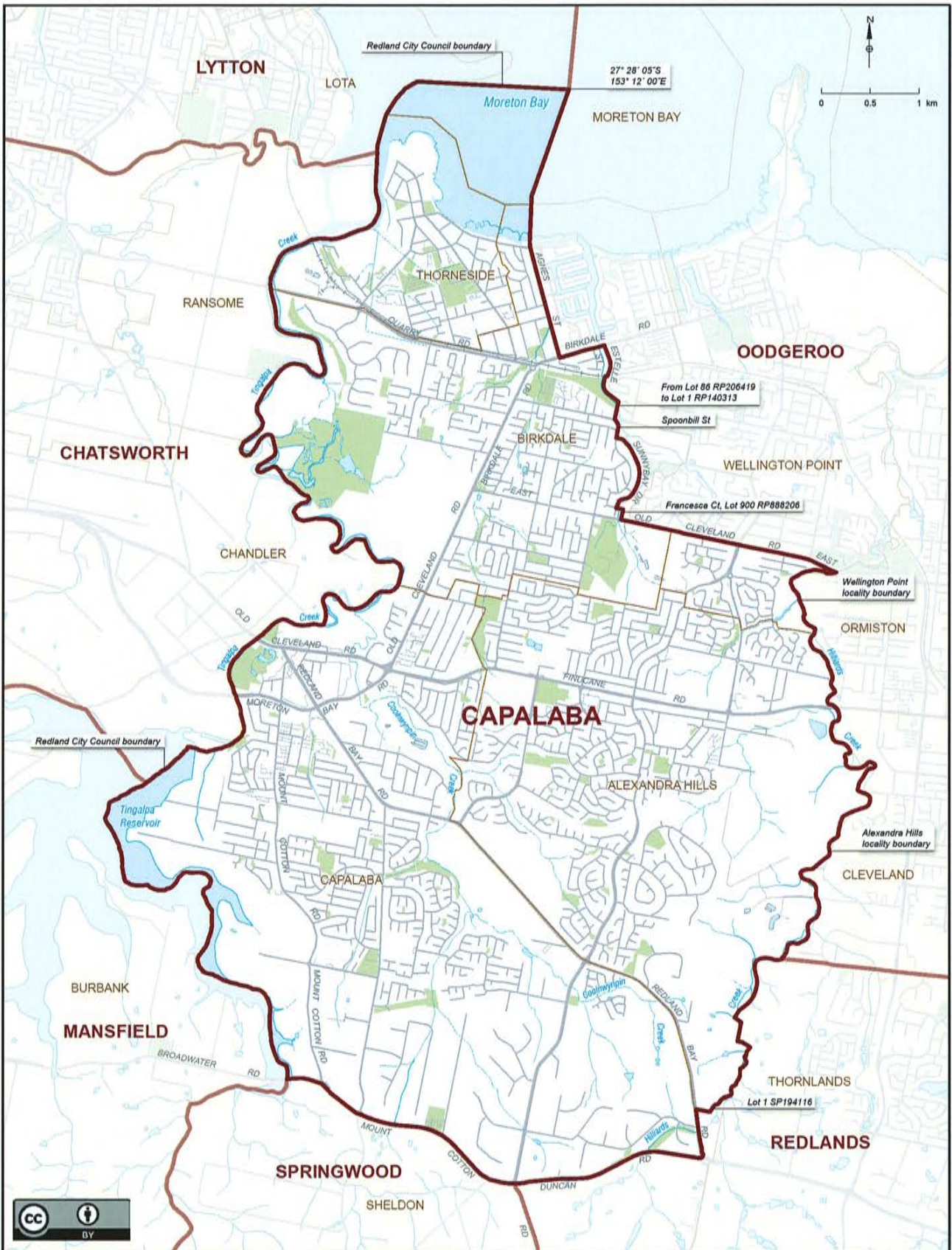
Queensland Electoral Boundaries 2017



© Electoral Commission Queensland 2017. © The State of Queensland (Department of Natural Resources and Mines) 2015.

Map drawn by Spatial Vision

Queensland Electoral Boundaries 2017



© Electoral Commission Queensland 2016. © The State of Queensland (Department of Natural Resources and Mines) 2015. Electoral Act 1992.

Map drawn by Spatial Vision

Queensland Electoral Boundaries 2017

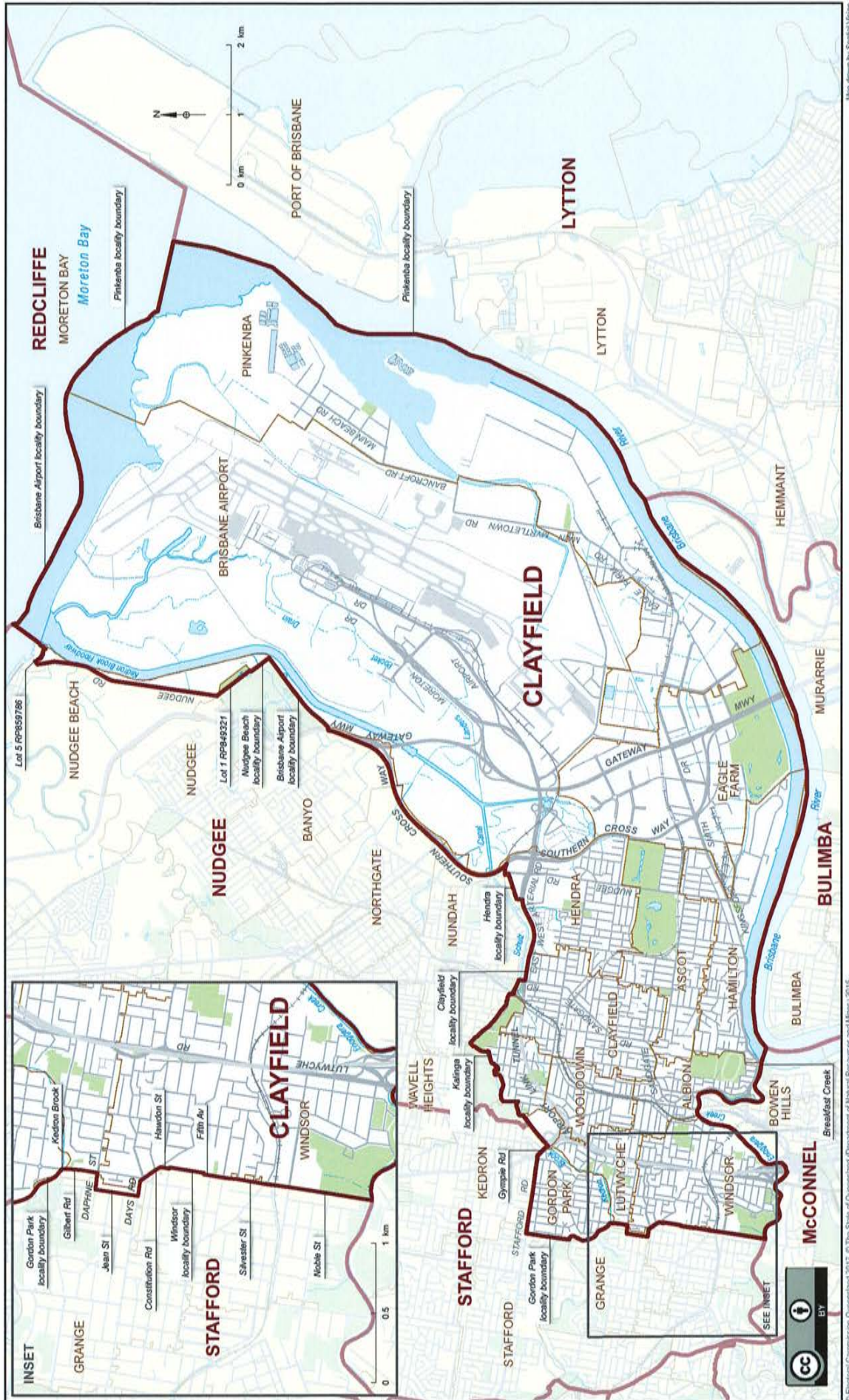


Map drawn by Spatial Vision

© Electoral Commission Queensland 2017. © The State of Queensland (Department of Natural Resources and Mines) 2015.

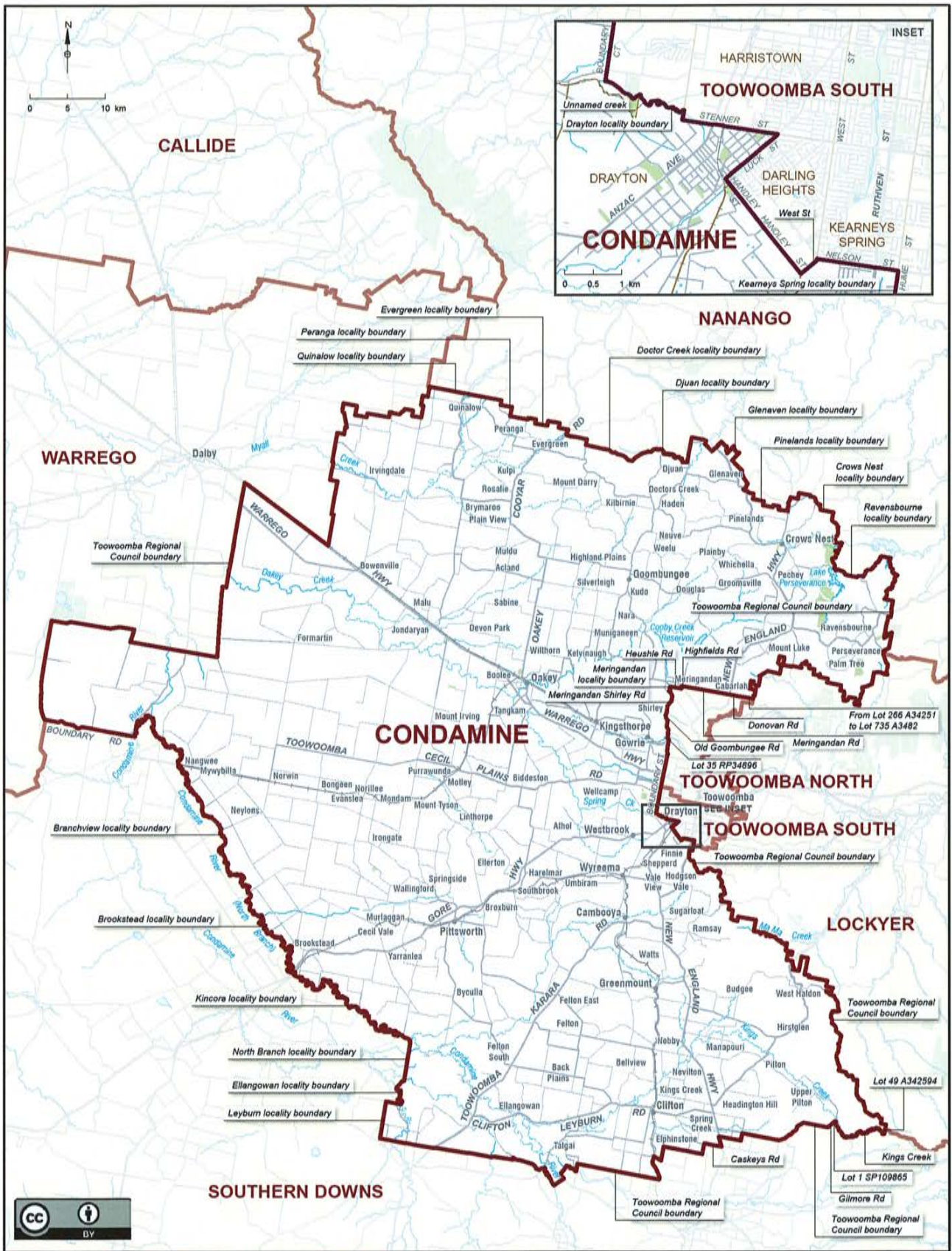


Queensland Electoral Boundaries 2017



© Electoral Commission Queensland 2017. © The State of Queensland (Department of Natural Resources and Mines) 2015. Map drawn by Spatial Vision

Queensland Electoral Boundaries 2017



© Electoral Commission Queensland 2017. © The State of Queensland (Department of Natural Resources and Mines) 2015.

Map drawn by Spatial Vision